



HD Engineering & Design

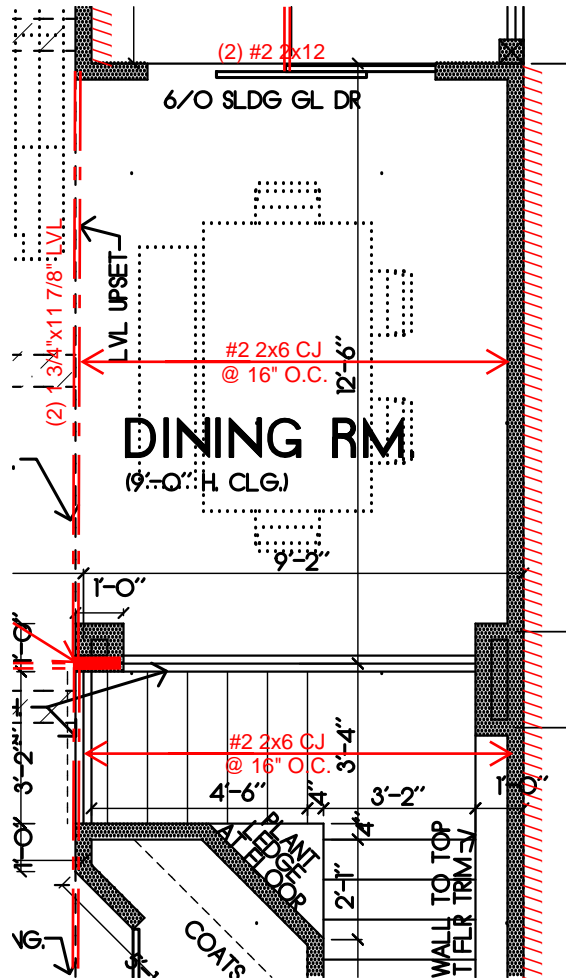
Solutions for all your engineering and design needs

FRAMING ADENDUM

1/17/2022

SAB HOMES

Re: HAMPSHIRE (E731)
2349 SW OLD PORT RD
LEE'S SUMMIT, MO



DINING FRAMING ALTERNATE



STRUCTURAL REVIEW
HD ENGINEERING & DESIGN
HD: 41296 DATE: 1/17/2022

THIS DOCUMENT CONTAINS
COPYRIGHTED MATERIAL AND
CONFIDENTIAL INFORMATION
BELONGING TO HD ENGINEERING.
UNAUTHORIZED USE, DISCLOSURE,
DISSEMINATION, OR DUPLICATION OF
ANY OF THE INFORMATION
CONTAINED HEREIN MAY RESULT IN
LIABILITY UNDER APPLICABLE LAW.