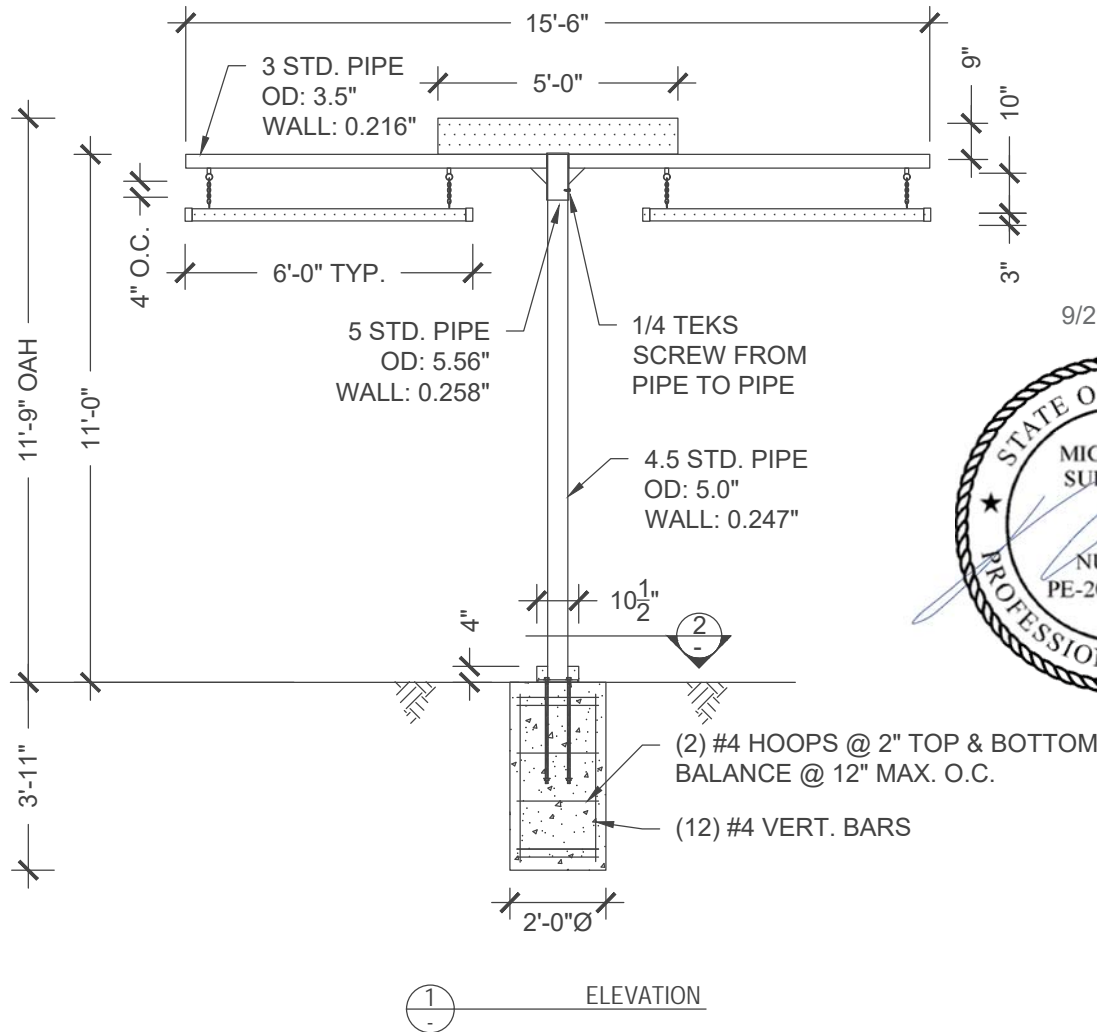




Development Services Department  
10815 RANCHO BERNARDO RD., SUITE 260  
SAN DIEGO, CA 92198  
PROJECTMANAGER@SULLAWAYENG.COM  
PHONE: 1-858-312-5150 FAX: 1-858-777-3534

PROJECT: DUTCH BROS., SIGN TYPE - CLEARANCE BAR, CHIPMAN & WARD LEE'S SUMMIT, MO 64063  
PROJECT #: 32261C  
CLIENT: ES&A SIGN & AWNING CO.

DATE: 9/29/2021  
ENGINEER: AN/RG  
LAST REVISED:

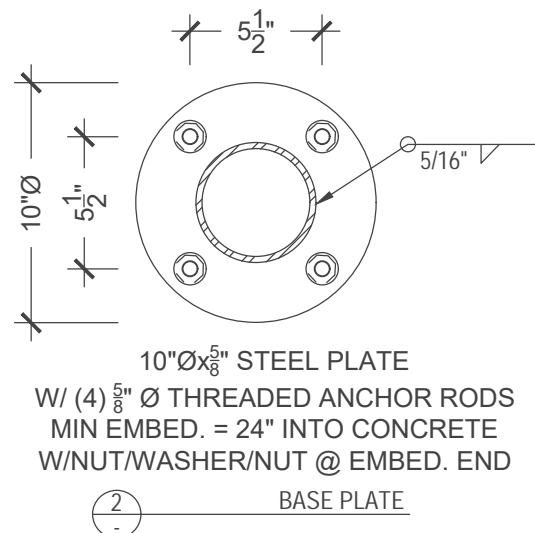


9/29/2021



## GENERAL NOTES

- DESIGN CODE: IBC 2018
- DESIGN LOADS: ASCE 7-16
- WIND VELOCITY 115 MPH EXPOSURE C
- EQUIVALENT TO IBC 2015, ASCE 7-10, WIND VELOCITY 115 MPH EXP. C
- CONCRETE 2500 PSI MINIMUM
- PIPE STEEL ASTM A53 GR. B,  $F_y = 35$  KSI MIN.
- PLATE STEEL ASTM A36
- TEKS SCREW PER ESR-1976
- THREADED ANCHOR ROD STEEL ASTM F1554 GR. 36
- STEEL REINFORCEMENT IN CONCRETE ASTM A615 GR 60
- PROVIDE MIN. 3" CLEAR COVER ON ALL STEEL EMBEDDED IN CONCRETE WHEN CAST AGAINST SOIL
- LATERAL SOIL BEARING PER IBC CLASS 4 (150 PSF/FT)
- WELDING STRENGTH,  $F_{exx} = 70$  KSI
- PROVIDE PROTECTION AGAINST DISSIMILAR METALS
- ALL DIMENSIONS TO BE VERIFIED PRIOR TO FABRICATION



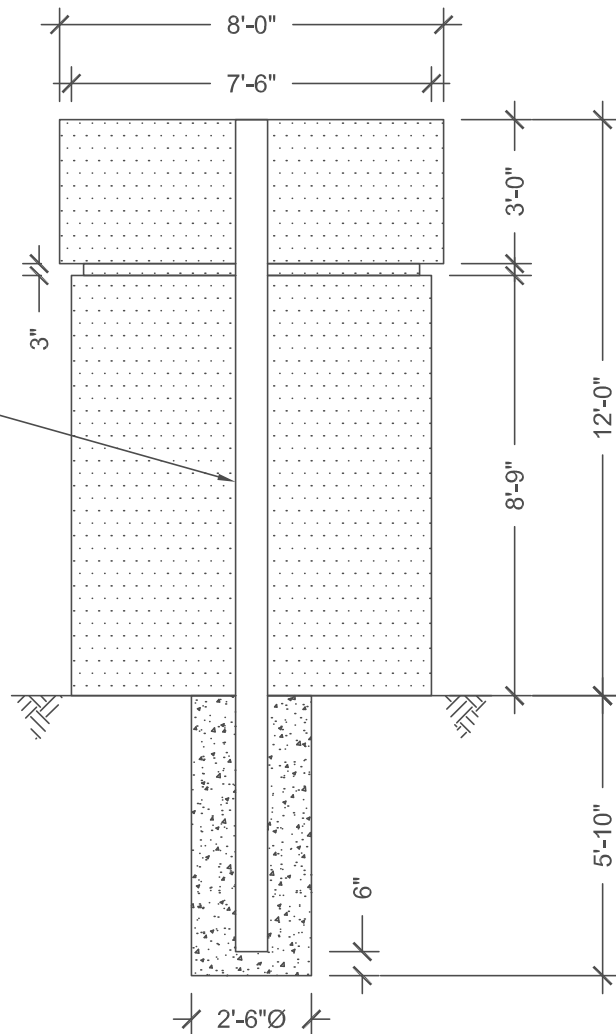


11545 W. BERNARDO COURT, SUITE 201  
SAN DIEGO, CA 92127  
Development Services Department  
Lee's SAN DIEGO, CA 92127  
PROJECTMANAGER@SULLAWAYENG.COM  
PHONE: 1-858-312-5150 FAX: 1-858-777-3534

PROJECT: DUTCH BROS, CHIPMAN & WARD LEE'S SUMMIT, MO  
PROJECT #: 32261D  
CLIENT: ES&A SIGN & AWNING CO.

DATE: 10-29-2021  
ENGINEER: MAC  
LAST REVISED:

8 STD. PIPE  
OD: 8.625"  
WALL: 0.322"



#### GENERAL NOTES

1. DESIGN CODE: IBC 2018
2. DESIGN LOADS: ASCE 7-16
3. WIND VELOCITY 110 MPH EXPOSURE C
4. CONCRETE 2500 PSI MINIMUM
5. PIPE STEEL ASTM A53 GR. B,  $F_y = 35$  KSI MIN.
6. LATERAL SOIL BEARING PER IBC CLASS 4 (150 PSF/FT)
7. PROVIDE PROTECTION AGAINST DISSIMILAR METALS
8. ALL DIMENSIONS TO BE VERIFIED PRIOR TO FABRICATION



FRONT ELEVATION

# SUMMARY DRAWING

## SUMMARY - FREESTANDING SIGNS & MENUS

DRAWING #:

32956

CLIENT:

DUTCH BROS - M00102  
CHIPMAN & WARD  
LEE'S SUMMIT, MO 64063

DATE OF SHOP DRAWING:

7/22/21

SHOP REVISIONS:

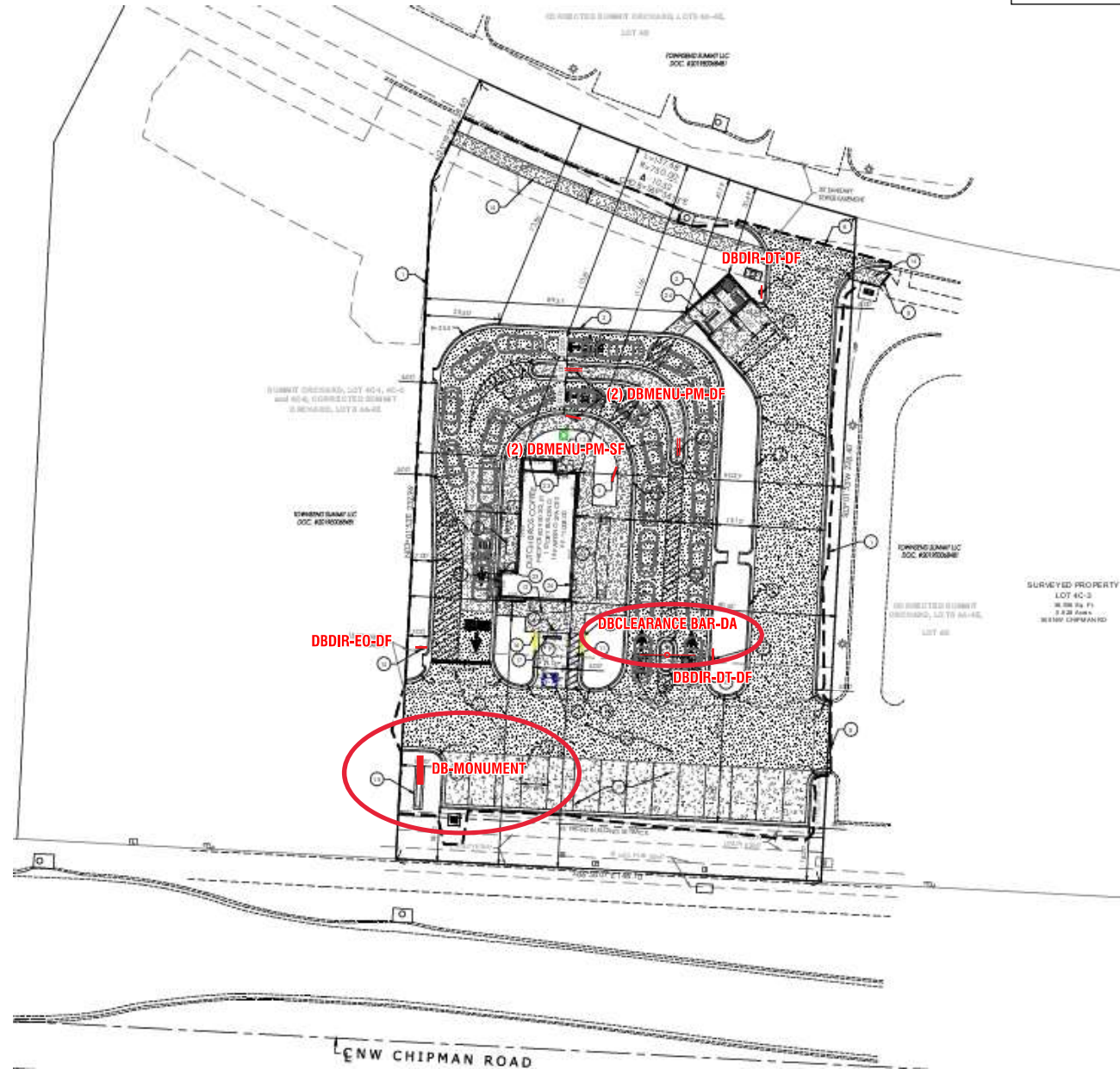
9.9.21 REMOVE WINDMILL OFF WEST  
& CL'S OFF SOUTH ELEVATION.  
MOVE DT'S BEHIND EASEMENT LINE.  
ADD MONUMENT SIGN.  
9.17.21 UPDATED ELEVATIONS &  
SITE PLAN.  
10.20.21 CHANGED WINDMILLS TO  
HALO-LIT. ADDED ADDRESS #'S.

SALES:	CONCEPT DESIGN:	PROD. DESIGN:	PAGE NO:
NJ	CH	CH	2 of 2

ES&A SIGN & AWNING

89975 PRABBE RD. | EUGENE, OR 97402

P 541.485.5546 | F 541.485.5813





# FACTORY DRAWING

## ENGINEERING DETAILS

SHOP DRAWING #:

**329561**

CLIENT:

DUTCH BROS - MO0102  
CHIPMAN & WARD  
LEE'S SUMMIT, MO 64063

DATE OF SHOP DRAWING:

**7/22/21**

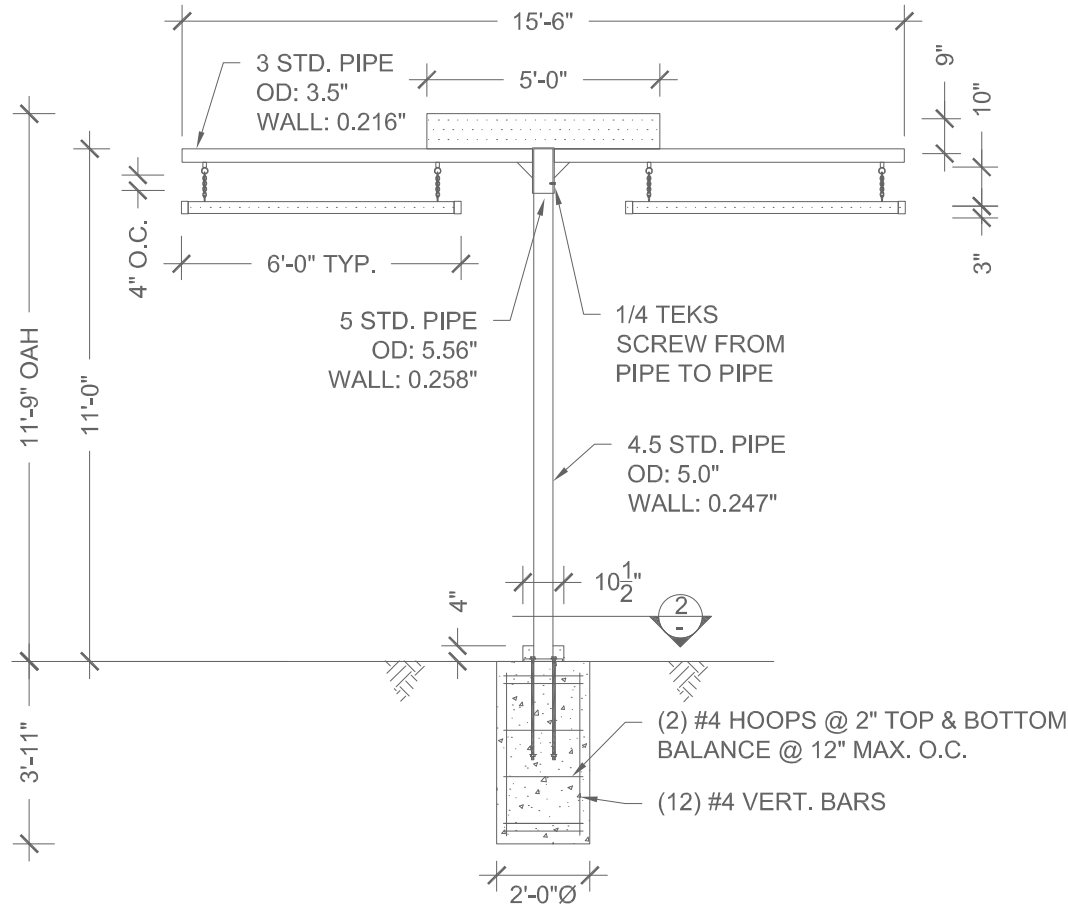
SHOP REVISIONS:

SALES:	CONCEPT:	PROD.	PAGE NO:
	DESIGN:	DESIGN:	
NJ	CH	CH	2 of 2

**ES&A SIGN & AWNING**

89975 PRARUE RD. | EUGENE, OR 97402

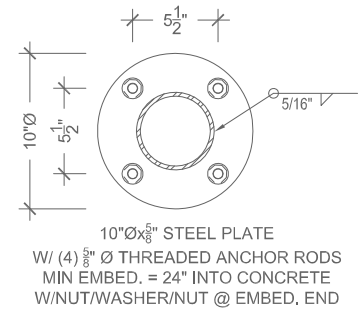
P 541.485.5546 | F 541.485.5813



**ELEVATION**  
SCALE: 3/8"=1'-0"

**RELEASED FOR  
CONSTRUCTION**  
As Noted on Plans Review

Development Services Department  
Lee's Summit, Missouri  
01/12/2022



**BASE PLATE**  
SCALE: 1 1/2"=1'-0"

# FACTORY DRAWING

SCOPE OF WORK: MANUFACTURE & INSTALL (1) D/F ILLUMINATED MONUMENT SIGN

**RELEASED FOR  
CONSTRUCTION**  
As Noted on Plans Review

Development Services Department  
Lee's Summit, Missouri  
01/12/2022



SHOP DRAWING #:

**32956J1**

CLIENT:

DUTCH BROS - MO0102  
CHIPMAN & WARD  
LEE'S SUMMIT, MO 64063

DATE OF SHOP DRAWING:

**9/9/21**

SHOP REVISIONS:

9.30.21 INCREASED PIPE DIA. BY 2"  
& FOOTING DEPTH BY 1'-2".  
DECREASED FOOTING WIDTH BY 6".  
10.20.21 REDUCED CABINET &  
O.A.W. OF SIGN.  
11.2.21 DECREASED FOOTING BY 2"

SALES:	CONCEPT DESIGN:	PROD. DESIGN:	PAGE NO:
NJ	CH	CH	1 of 2

ES&A SIGN & AWNING

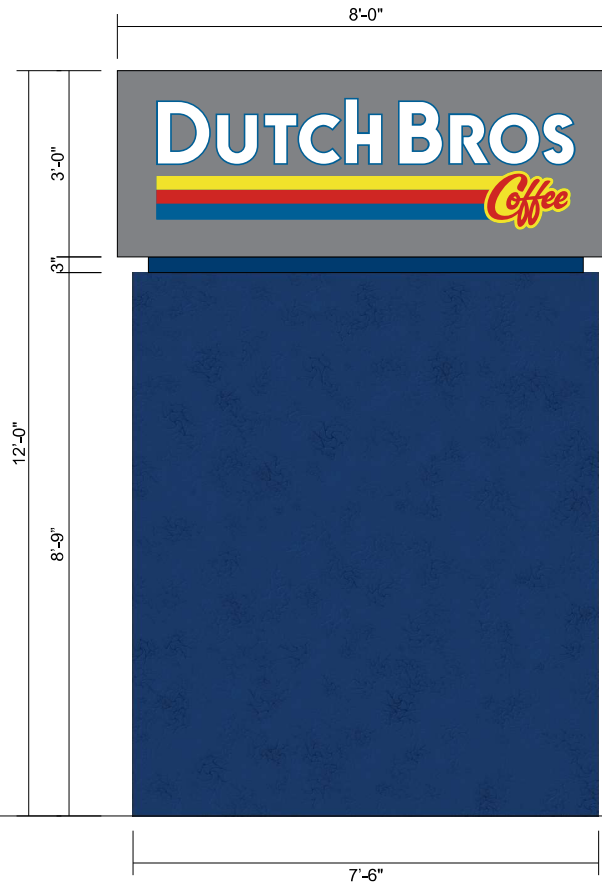
89975 PRARUE RD. | EUGENE, OR 97402

P 541.485.5546 | F 541.485.5813

## COLOR CODE

	230-015 YELLOW PSV
	230-33 RED PSV
	230-127 INTENSE BLUE PSV
	WHITE
	DB CUSTOM GREY
	DB CUSTOM DARK BLUE

FRONT VIEW  
SCALE: 1/2"=1'-0"



SIDE VIEW  
SCALE: 1/2"=1'-0"



FABRICATED ALUMINUM CABINET PAINTED DB CUSTOM GREY.  
REVEAL PAINTED DB CUSTOM DARK BLUE.  
BACKED-UP WHITE ACRYLIC LETTERS.  
1ST SURFACE 230-015 YELLOW, 230-33 RED, & 230-127 INTENSE BLUE PSV.  
WHITE LED ILLUMINATION.  
FABRICATED ALUMINUM SKIRT PAINTED DB CUSTOM DARK BLUE WITH MEDIUM TEXTURE COAT.

# FACTORY DRAWING

SHOP DRAWING #:  
**32956J1**

CLIENT:  
DUTCH BROS - M00102  
CHIPMAN & WARD  
LEE'S SUMMIT, MO 64063

DATE OF SHOP DRAWING:  
**9/9/21**

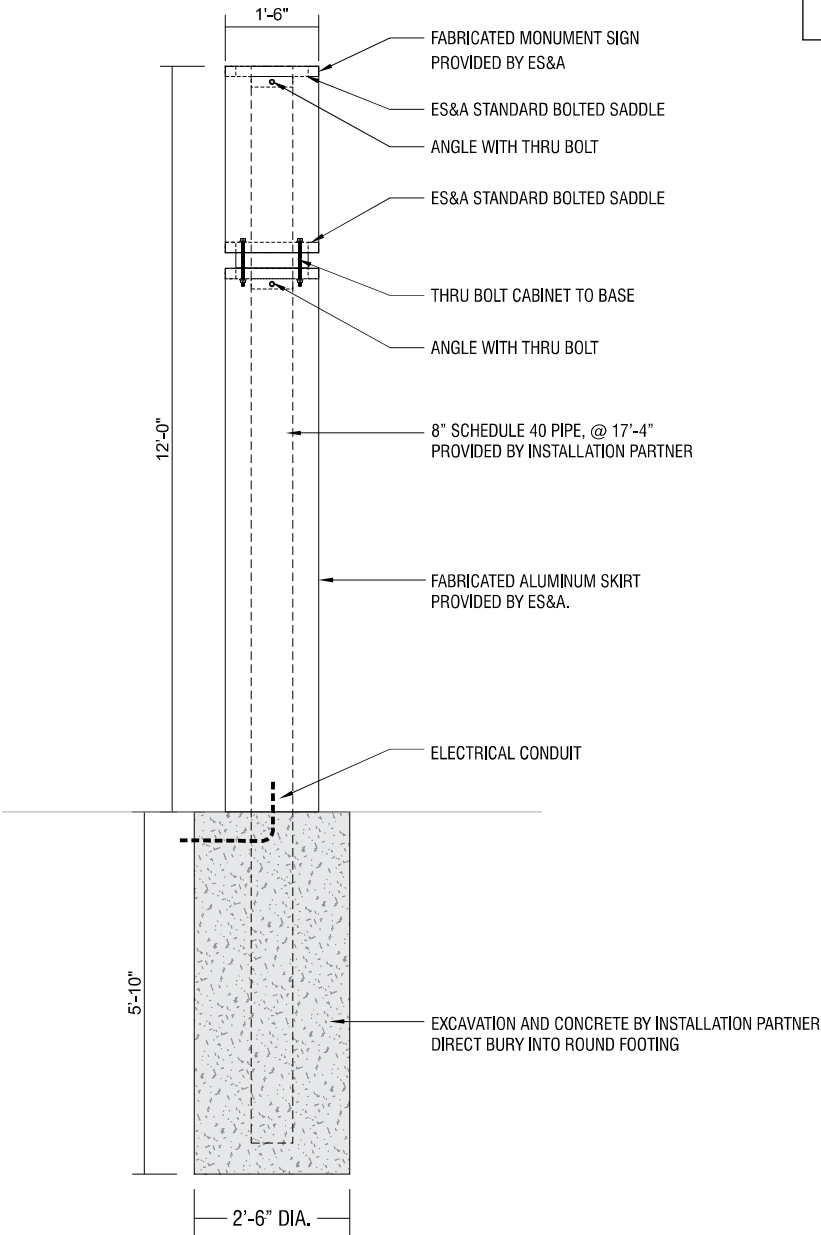
SHOP REVISIONS:  
9.30.21 INCREASED PIPE DIA. BY 2"  
& FOOTING DEPTH BY 1'-2".  
DECREASED FOOTING WIDTH BY 6".  
10.20.21 REDUCED CABINET &  
O.A.W. OF SIGN.  
11.2.21 DECREASED FOOTING BY 2"

SALES:	CONCEPT:	PROD.	PAGE NO:
	DESIGN:	DESIGN:	
NJ	CH	CH	2 of 2

ES&A SIGN & AWNING  
89975 PRARIE RD. | EUGENE, OR 97402  
P 541.485.5546 | F 541.485.5813

## ATTACHMENT DETAIL

SIDE VIEW  
SCALE: 1/2"=1'-0"



RELEASED FOR  
CONSTRUCTION  
As Noted on Plans Review  
Development Services Department  
Lee's Summit, Missouri  
01/12/2022