

SUMMARY  
DRAWING

SUMMARY - BUILDING SIGNS & MENUS

DRAWING #:

32956

CLIENT:

DUTCH BROS - M00102  
CHIPMAN & WARD  
LEE'S SUMMIT, MO 64063

DATE OF SHOP DRAWING:

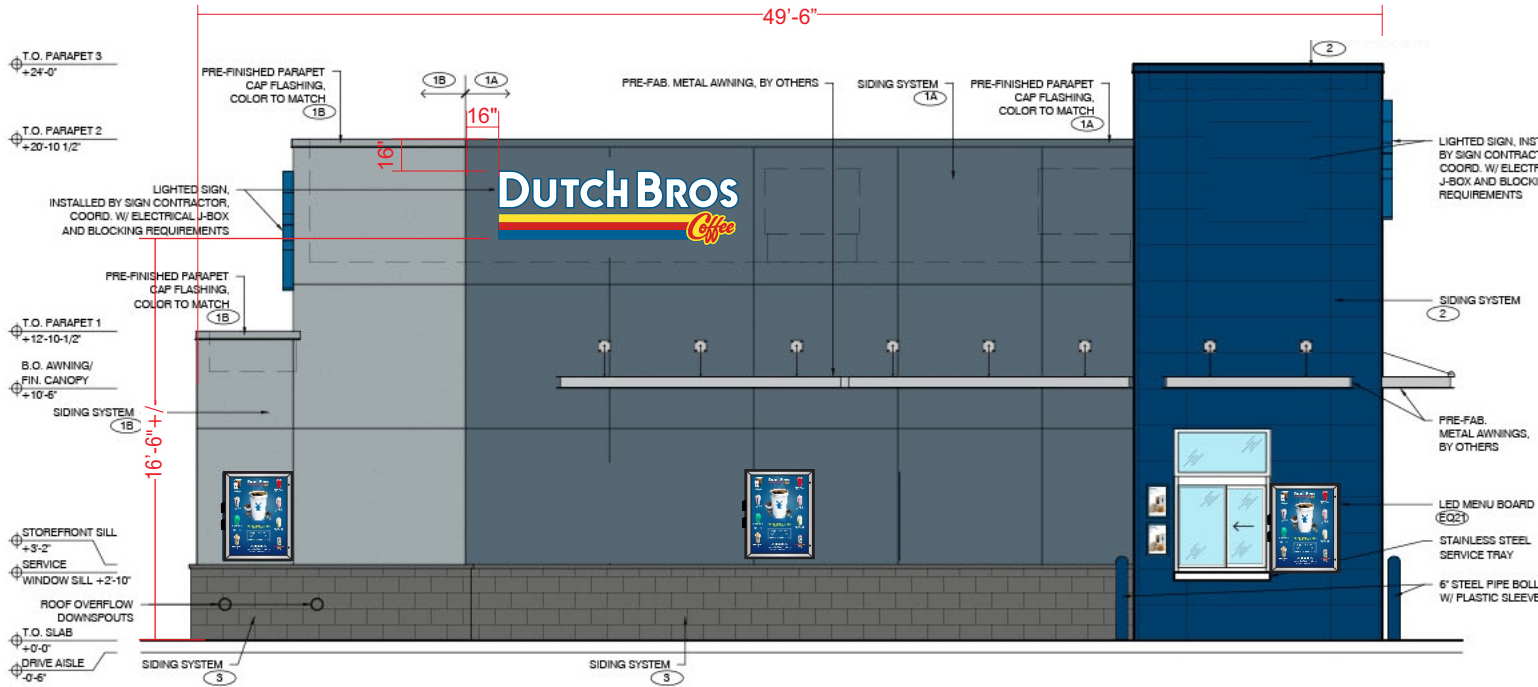
7/22/21

SHOP REVISIONS:

9.9.21 REMOVE WINDMILL OFF WEST  
& CL'S OFF SOUTH ELEVATION.  
MOVE DT'S BEHIND EASEMENT LINE.  
ADD MONUMENT SIGN.  
9.17.21 UPDATED ELEVATIONS &  
SITE PLAN.  
10.20.21 CHANGED WINDMILLS TO  
HALO-LIT. ADDED ADDRESS #'S.

SALES:	CONCEPT:	PROD.	PAGE NO:
NJ	CH	CH	1 of 2

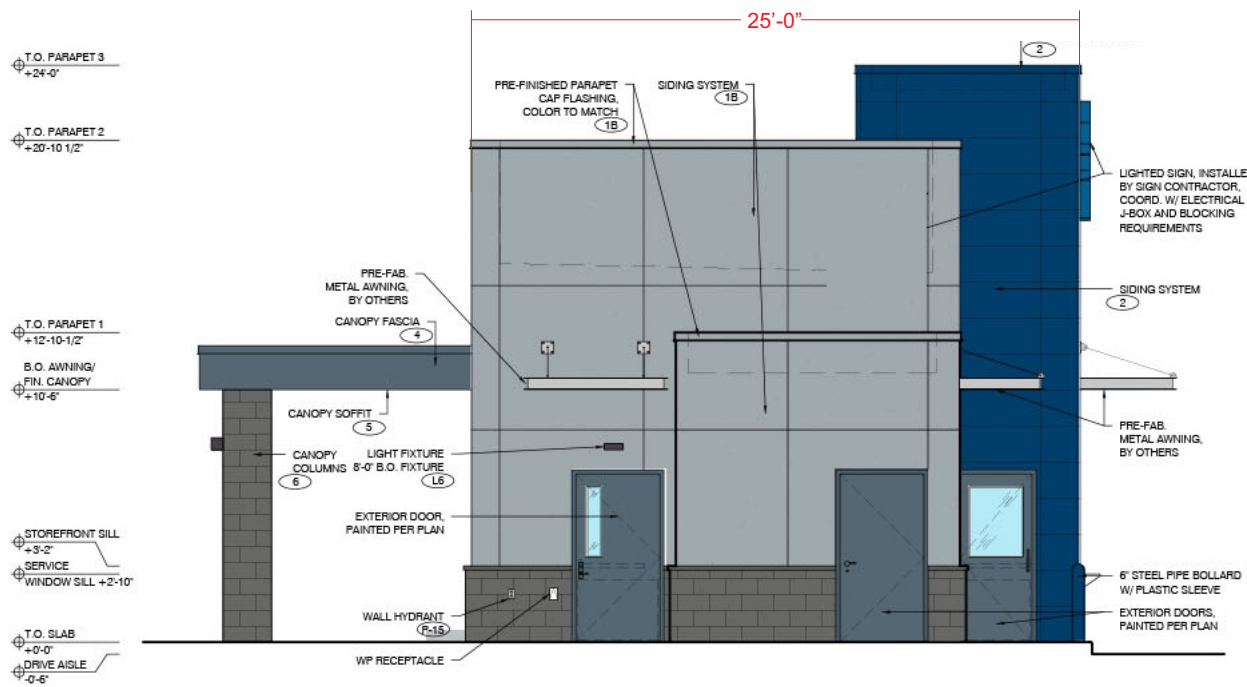
ES&A SIGN & AWNING  
89975 PRAIRIE RD. | EUGENE, OR 97402  
P 541.485.5546 | F 541.485.5813



WEST ELEVATION

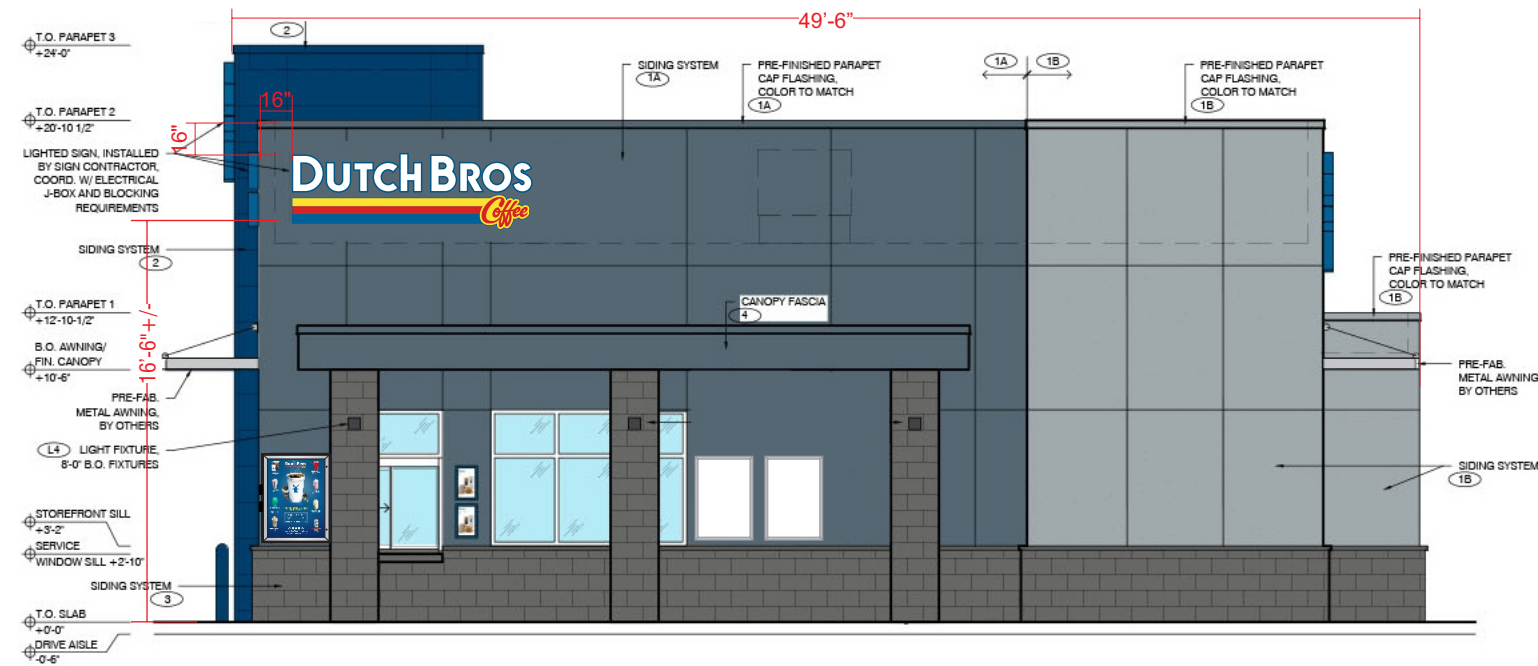
DBCL10 @ 31.5 SF

SCALE: 1/8"=1'-0" Wall Area - West Elevation: 24' x 49' 6" = 1,188 sq ft



NORTH ELEVATION

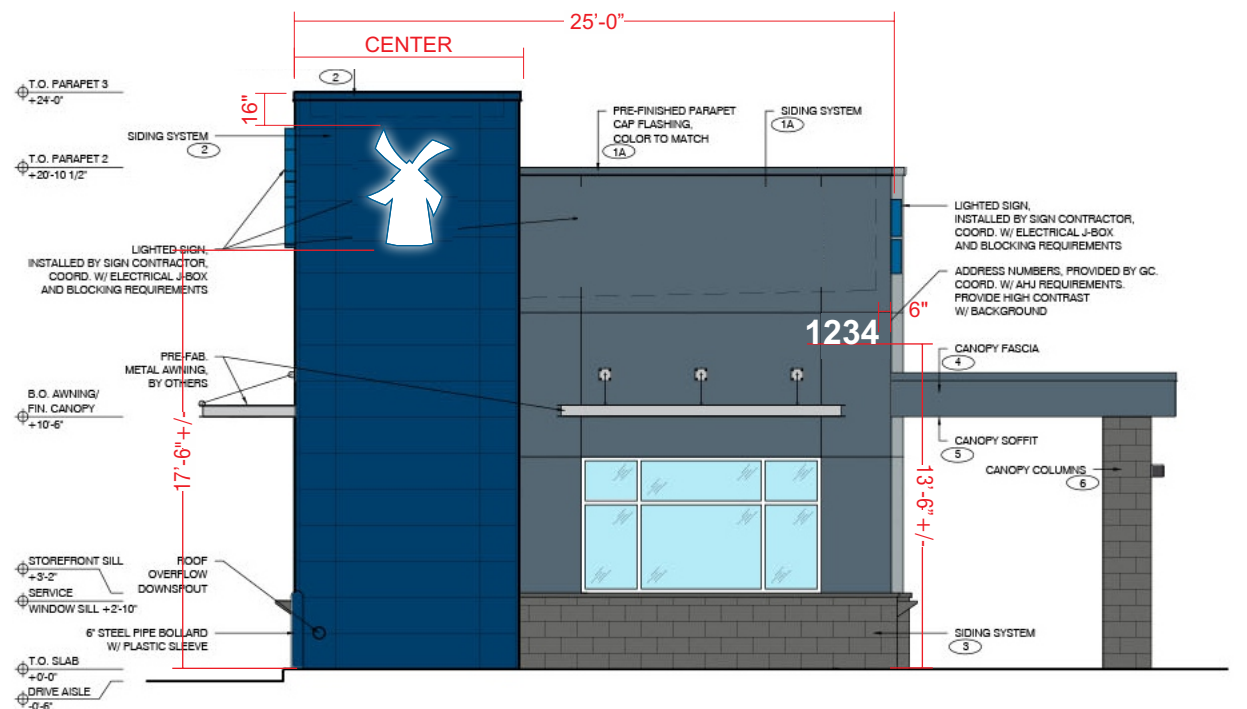
SCALE: 1/8"=1'-0"



EAST ELEVATION

DBCL10 @ 31.5 SF

SCALE: 1/8"=1'-0" Wall Area - East Elevation: 24' x 49' 6" = 1,188 sq ft



SOUTH ELEVATION

SCALE: 1/8"=1'-0"

DBW13 @ 18.4 SF

Wall Area - South Elevation: 24' x 25' = 600 sq ft

# SUMMARY DRAWING

DRAWING #:

32956

CLIENT:

DUTCH BROS - M00102  
CHIPMAN & WARD  
LEE'S SUMMIT, MO 64063

DATE OF SHOP DRAWING:

7/22/21

SHOP REVISIONS:

9.9.21 REMOVE WINDMILL OFF WEST  
& CL'S OFF SOUTH ELEVATION.  
MOVE DT'S BEHIND EASEMENT LINE.  
ADD MONUMENT SIGN.  
9.17.21 UPDATED ELEVATIONS &  
SITE PLAN.  
10.20.21 CHANGED WINDMILLS TO  
HALO-LIT. ADDED ADDRESS #'S.

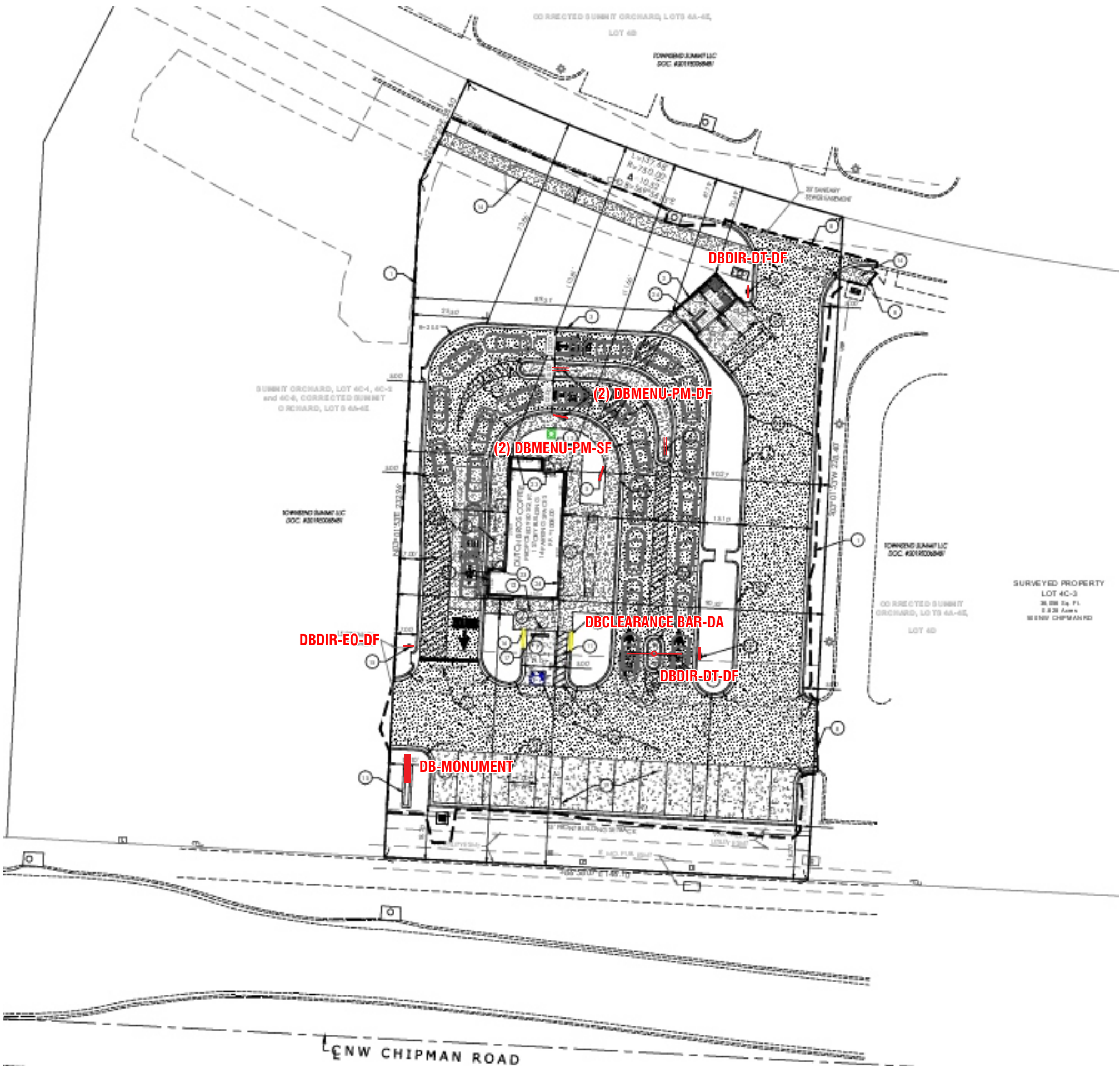
SALES:	CONCEPT DESIGN:	PROD. DESIGN:	PAGE NO:
NJ	CH	CH	2 of 2

ES&A SIGN & AWNING

89975 PRAIRIE RD. | EUGENE, OR 97402

P 541.485.5546 | F 541.485.5813

## SUMMARY - FREESTANDING SIGNS & MENUS





FACTORY  
DRAWING

SCOPE OF WORK: MANUFACTURE & INSTALL (2) SETS OF ILLUMINATED CHANNEL LETTERS WITH REMOTE WIREWAYS



SHOP DRAWING #:  
**32956A1**

CLIENT:  
DUTCH BROS - M00102  
CHIPMAN & WARD  
LEE'S SUMMIT, MO 64063





DATE OF SHOP DRAWING:  
**7/22/21**

SHOP REVISIONS:  
9.9.21 REMOVED ONE.

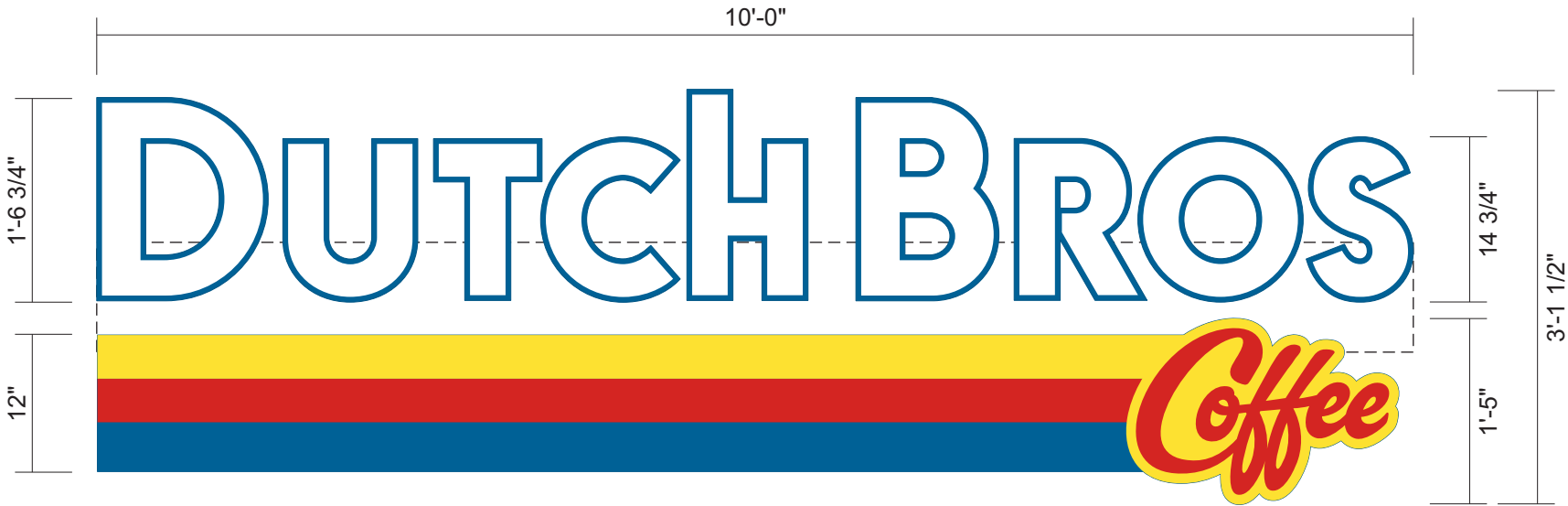
SALES:	CONCEPT DESIGN:	PROD. DESIGN:	PAGE NO:
NJ	CH	CH	I of I

ES&A SIGN & AWNING  
89975 PRAIRIE RD. | EUGENE, OR 97402  
P 541.485.5546 | F 541.485.5813

COLOR CODE

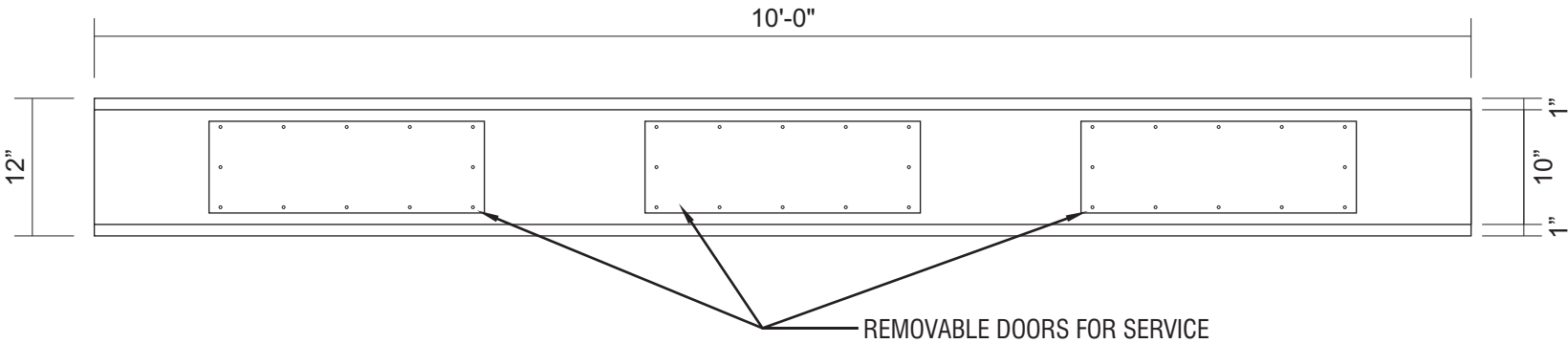
-  230-015 YELLOW PSV
-  230-33 RED PSV
-  230-127 INTENSE BLUE PSV
-  WHITE

DBCL10  
SCALE: 3/4"=1'-0"



Sign Area: 3' 2" x 10' = 31.7 sq ft

FABRICATED REMOTE WIREWAY  
.040 PRE-COAT WHITE ALUMINUM



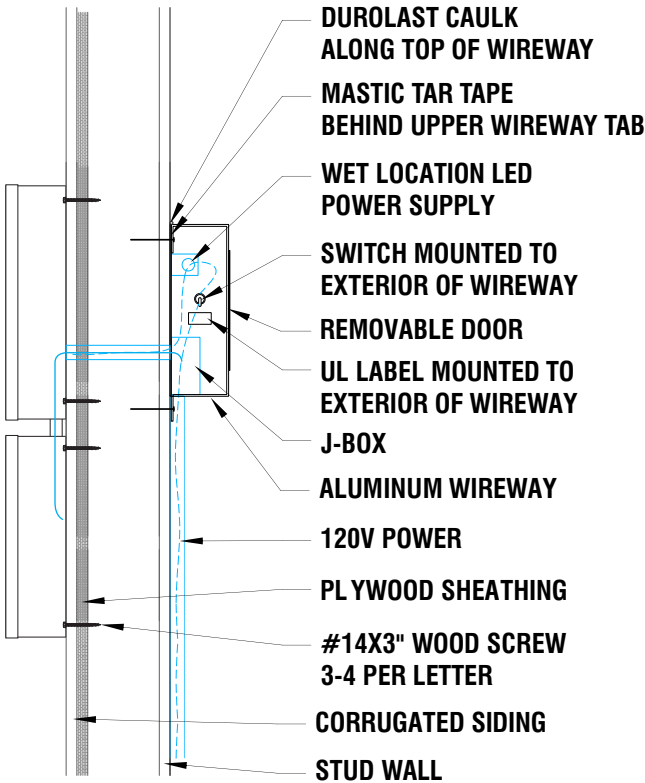
INTERNALLY ILLUMINATED FACE-LIT FLUSH MOUNTED CHANNEL LETTERS  
5" DEEP CHANNEL LETTERS.  
RETURNS & TRIM CAP PAINTED TO MATCH PANTONE 7691 C "INTENSE BLUE".  
WHITE ACRYLIC FACES.  
230-127 INTENSE BLUE PSV, 230-015 YELLOW PSV, 230-33 RED PSV.  
LED ILLUMINATION.  
FLUSH MOUNTED CHANNEL LETTERS WITH REMOTE MOUNTED WIREWAY.

SIDE VIEW



ATTACHMENT DETAIL

SCALE: 3/4"=1'-0"  
CHANNEL LETTERS WITH REMOTE WIREWAY



FACTORY  
DRAWING

SCOPE OF WORK: MANUFACTURE & INSTALL (1) HALO-ILLUMINATED WINDMILL LOGO



SHOP DRAWING #:  
**32956B2**

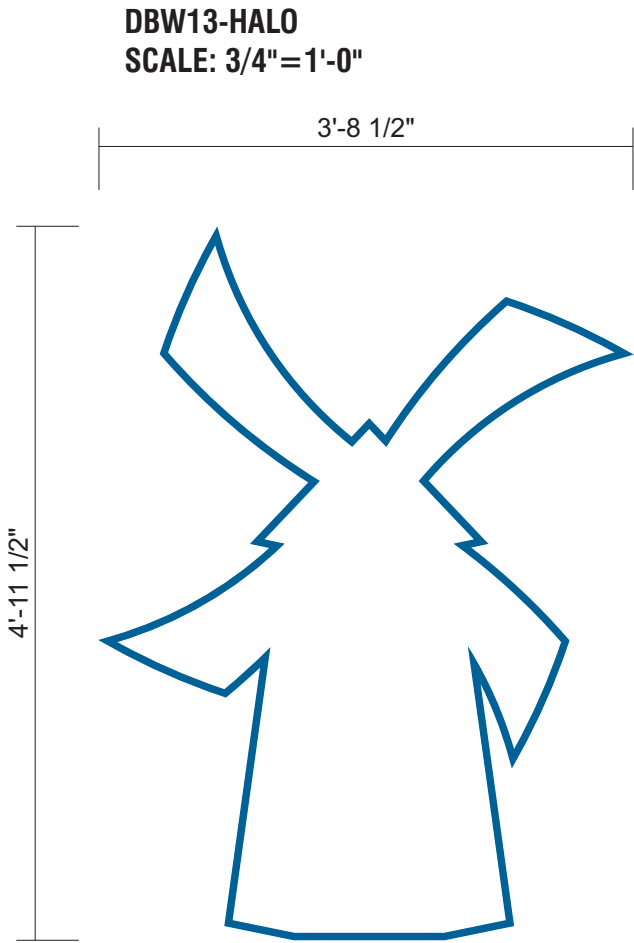
CLIENT:  
DUTCH BROS - M00102  
CHIPMAN & WARD  
LEE'S SUMMIT, MO 64063

DATE OF SHOP DRAWING:  
**7/22/21**

SHOP REVISIONS:  
9.9.21 REMOVED ONE.  
10.20.21 REMOVED ONE &  
CHANGED TO HALO LIT.

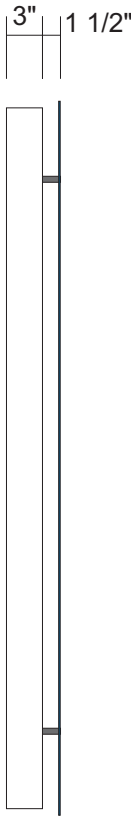
SALES:	CONCEPT. DESIGN:	PROD. DESIGN:	PAGE NO:
NJ	CH	CH	I of I

ES&A SIGN & AWNING  
89975 PRAIRIE RD. | EUGENE, OR 97402  
P 541.485.5546 | F 541.485.5813

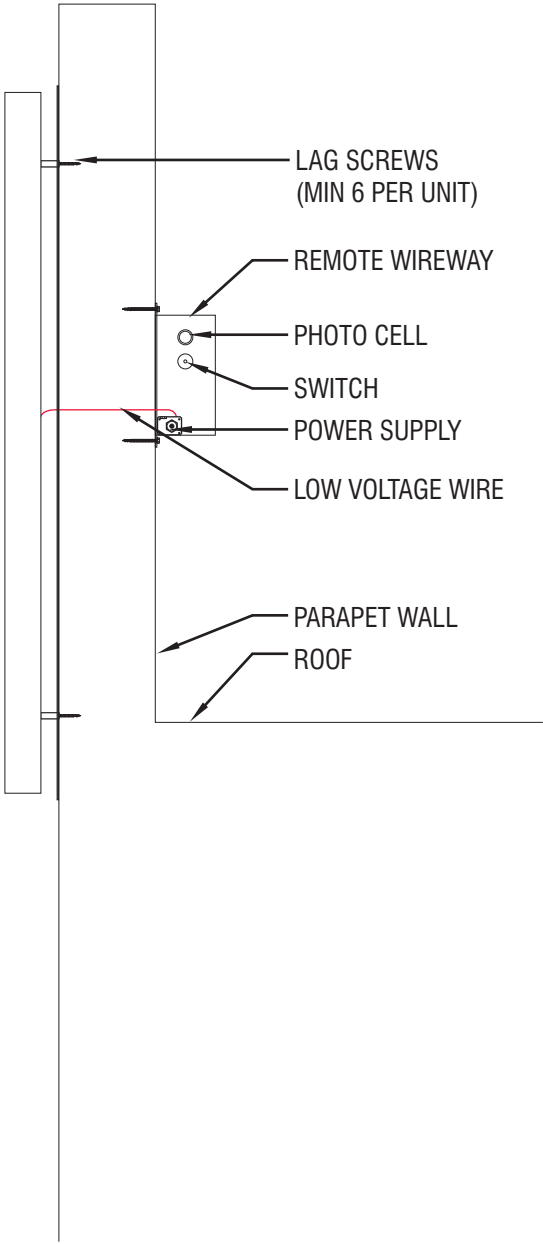


Sign Area: 5' x 3' 9" = 18.8 sq ft

SIDE VIEW



ATTACHMENT DETAIL  
CHANNEL LOGO WITH  
REMOTE WIREWAY



3" DEEP REVERSE PAN FABRICATED ALUMINUM WINDMILL. PAINT WHITE.  
WHITE LED HALO ILLUMINATION.  
CLEAR ACRYLIC BACKS WITH WHITE DIFFUSER FOR HALO LIGHTING & 1 1/2" SPACERS.  
1/8" ALUMINUM OVERSIZED BACKERS. PAINT TO MATCH PMS 7691 C BLUE. FLUSH MOUNT BACKERS TO BUILDING.

COLOR CODE

	230-127 INTENSE BLUE PSV
	WHITE

FACTORY  
DRAWING

SCOPE OF WORK: PROVIDE (2) NON-ILLUMINATED SNAP FRAME MENUS



SHOP DRAWING #:

32956C

CLIENT:

DUTCH BROS - M00102  
CHIPMAN & WARD  
LEE'S SUMMIT, MO 64063

DATE OF SHOP DRAWING:

7/22/21

SHOP REVISIONS:

SALES:	CONCEPT. DESIGN:	PROD. DESIGN:	PAGE NO:
NJ	CH	CH	I of I

ES&A SIGN & AWNING

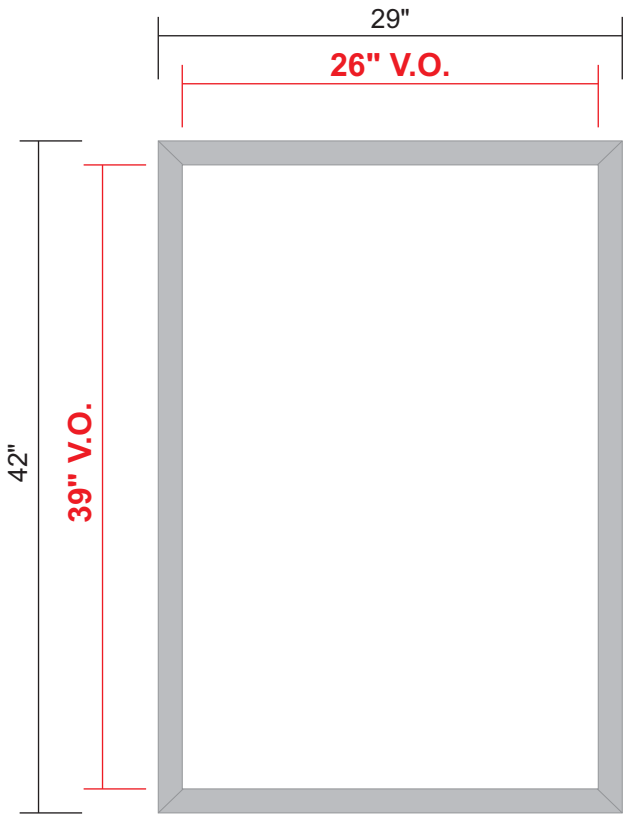
89975 PRAIRIE RD. | EUGENE, OR 97402

P 541.485.5546 | F 541.485.5813

COLOR CODE



SILVER



ALUMINUM SNAP FRAME FOR A 27" X 40" POSTER

1 1/4"



SCREW TO EXTERIOR WALL OF BUILDING

SCALE: 1"=1'-0"

FACTORY  
DRAWING

SCOPE OF WORK: PROVIDE (4) ILLUMINATED MENU SIGNS V5 - WALL-MOUNTED



SHOP DRAWING #:  
**32956D**

CLIENT:  
DUTCH BROS - M00102  
CHIPMAN & WARD  
LEE'S SUMMIT, MO 64063

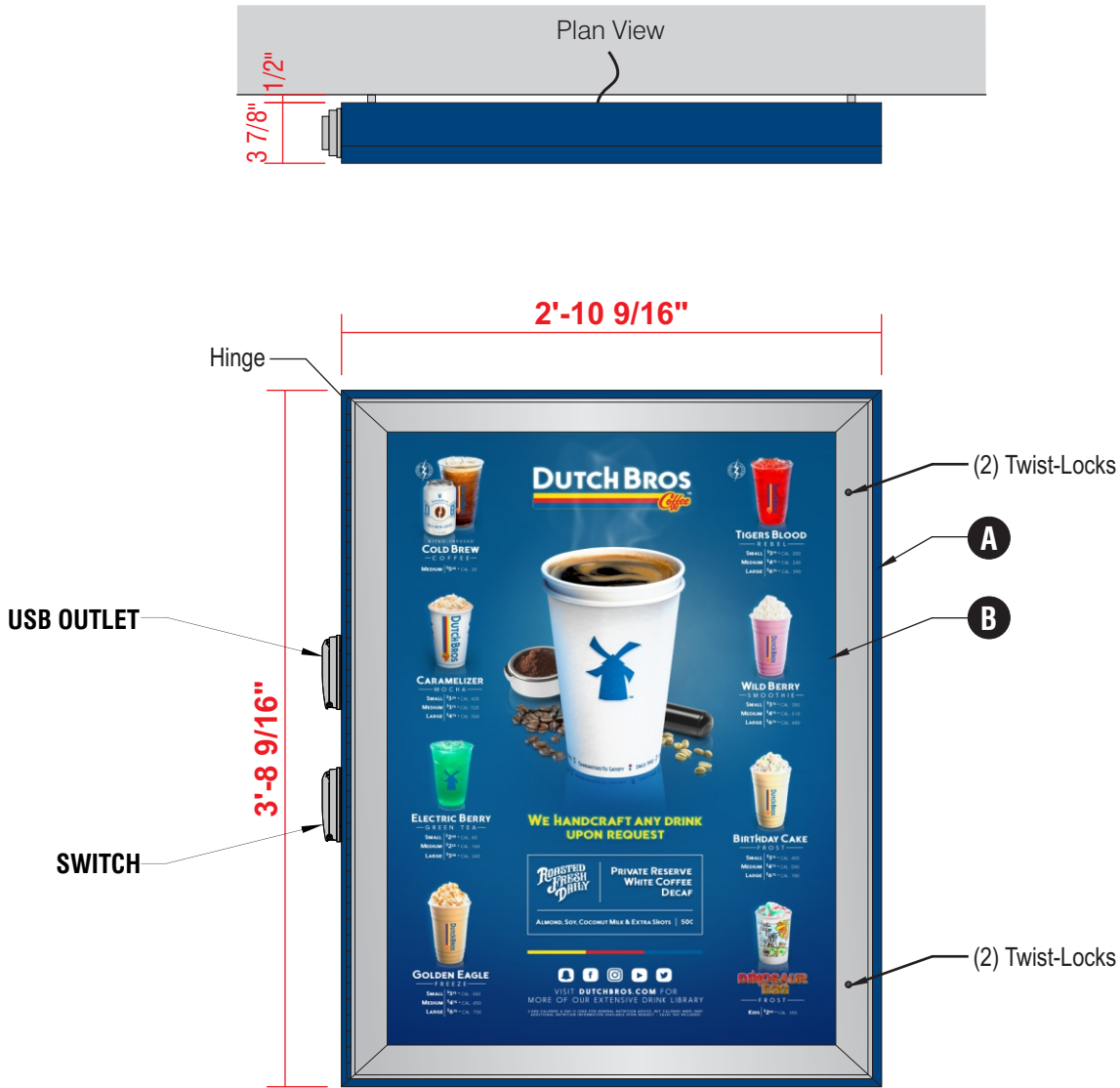
DATE OF SHOP DRAWING:  
**7/22/21**

SHOP REVISIONS:

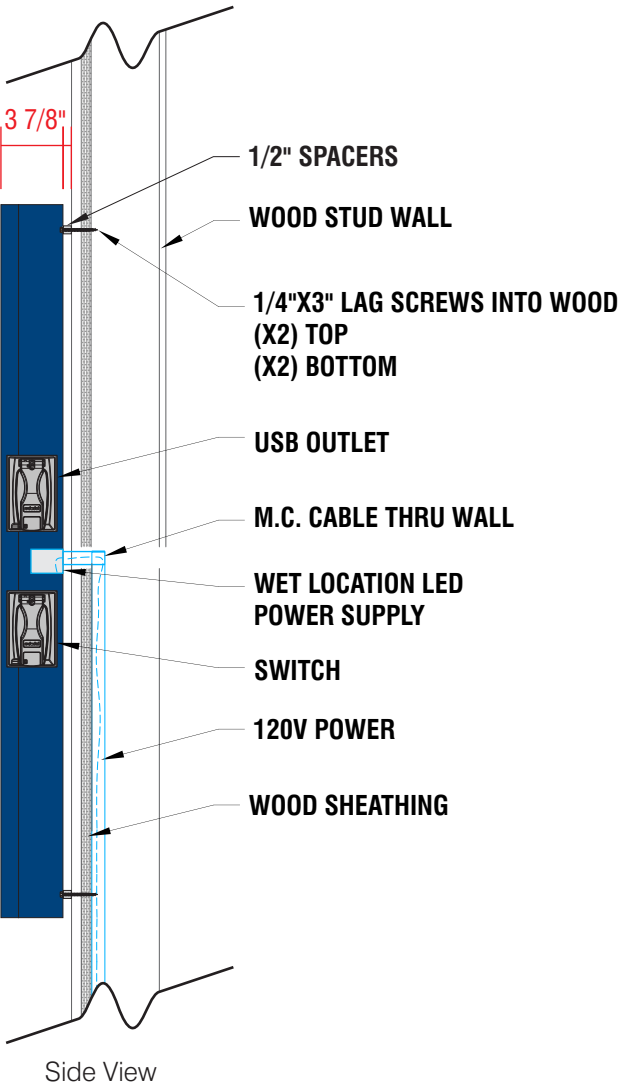
SALES:	CONCEPT DESIGN:	PROD. DESIGN:	PAGE NO:
NJ	CH	CH	I of I

ES&A SIGN & AWNING  
89975 PRAIRIE RD. | EUGENE, OR 97402  
P 541.485.5546 | F 541.485.5813

COLOR CODE	
	DIGITAL PRINT
	POWDER COATED DB CUSTOM DARK BLUE
	POWDER COATED SILVER



ATTACHMENT DETAIL  
ILLUMINATED WALL MOUNTED MENU



- A WALL-MOUNTED, BACKLIT MENU SIGN**
- PRINTED MENU PANEL NOT INCLUDED
  - LED OUTDOOR LIGHT BOX
  - LOCKABLE HINGED DOOR
  - ALUMINUM CONSTRUCTION
- B PRINTED LIGHT GUIDE PANEL**
- AS SEPARATE ORDER

SCALE: 1"=1'-0"

FACTORY  
DRAWING

SCOPE OF WORK: PROVIDE (2) S/F ILLUMINATED MENU SIGNS V5 - PLATE-MOUNTED

Sign Area: 3' 9" x 2' 11" = 11 sq ft



SHOP DRAWING #:  
**32956E**

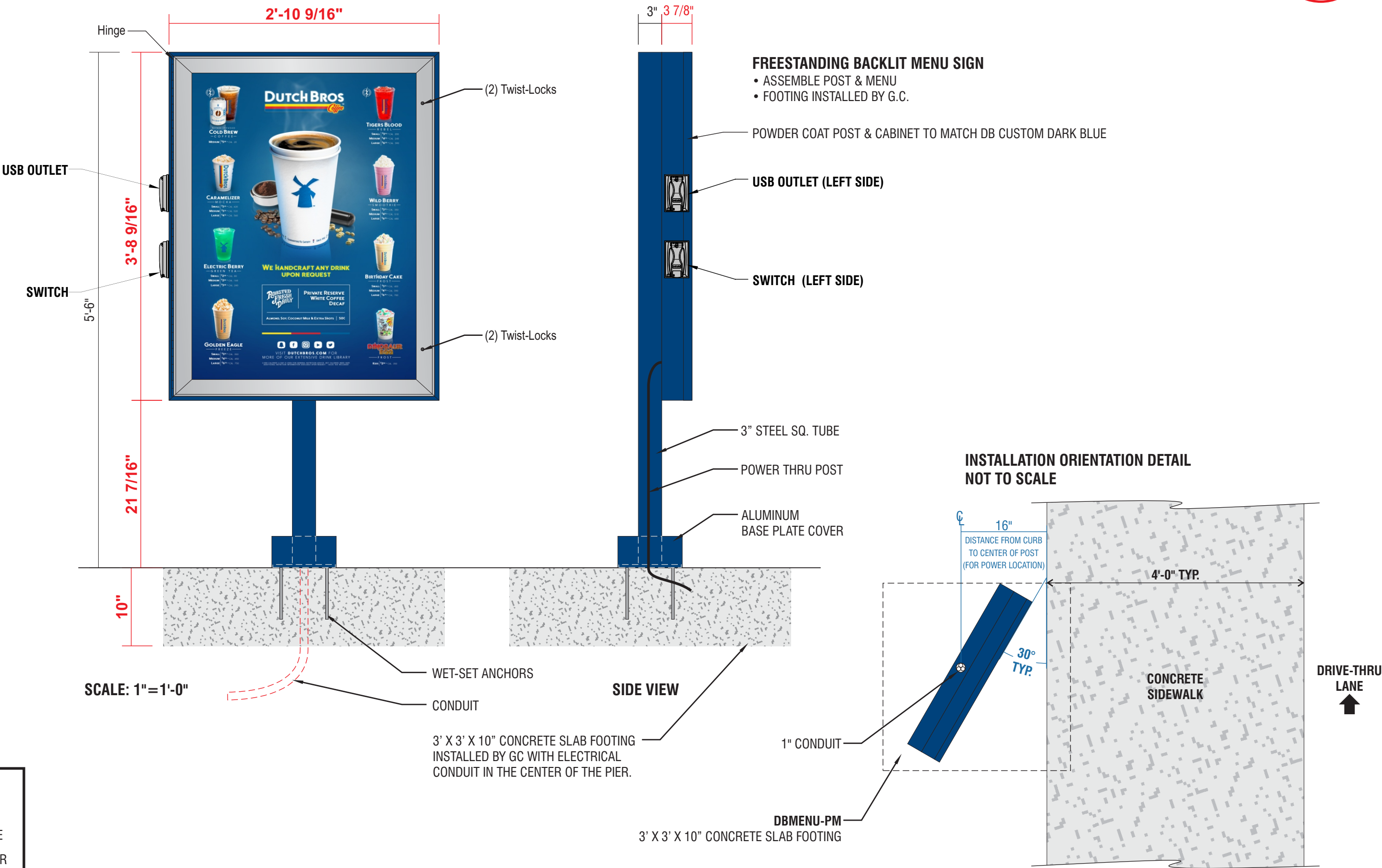
CLIENT:  
DUTCH BROS - M00102  
CHIPMAN & WARD  
LEE'S SUMMIT, MO 64063

DATE OF SHOP DRAWING:  
7/22/21

SHOP REVISIONS:

SALES:	CONCEPT DESIGN:	PROD. DESIGN:	PAGE NO:
NJ	CH	CH	I of I

ES&A SIGN & AWNING  
89975 PRAIRIE RD. | EUGENE, OR 97402  
P 541.485.5546 | F 541.485.5813



COLOR CODE

	DIGITAL PRINT
	POWDER COATED DB CUSTOM DARK BLUE
	POWDER COATED SILVER

FACTORY  
DRAWING

SCOPE OF WORK: PROVIDE (2) D/F ILLUMINATED MENU SIGNS V5 - PLATE-MOUNTED

Sign Area: 3' 9" x 2' 11" = 11 sq ft



SHOP DRAWING #:  
**32956F**

CLIENT:  
DUTCH BROS - M00102  
CHIPMAN & WARD  
LEE'S SUMMIT, MO 64063

DATE OF SHOP DRAWING:  
7/22/21

SHOP REVISIONS:

SALES:	CONCEPT DESIGN:	PROD. DESIGN:	PAGE NO:
NJ	CH	CH	I of I

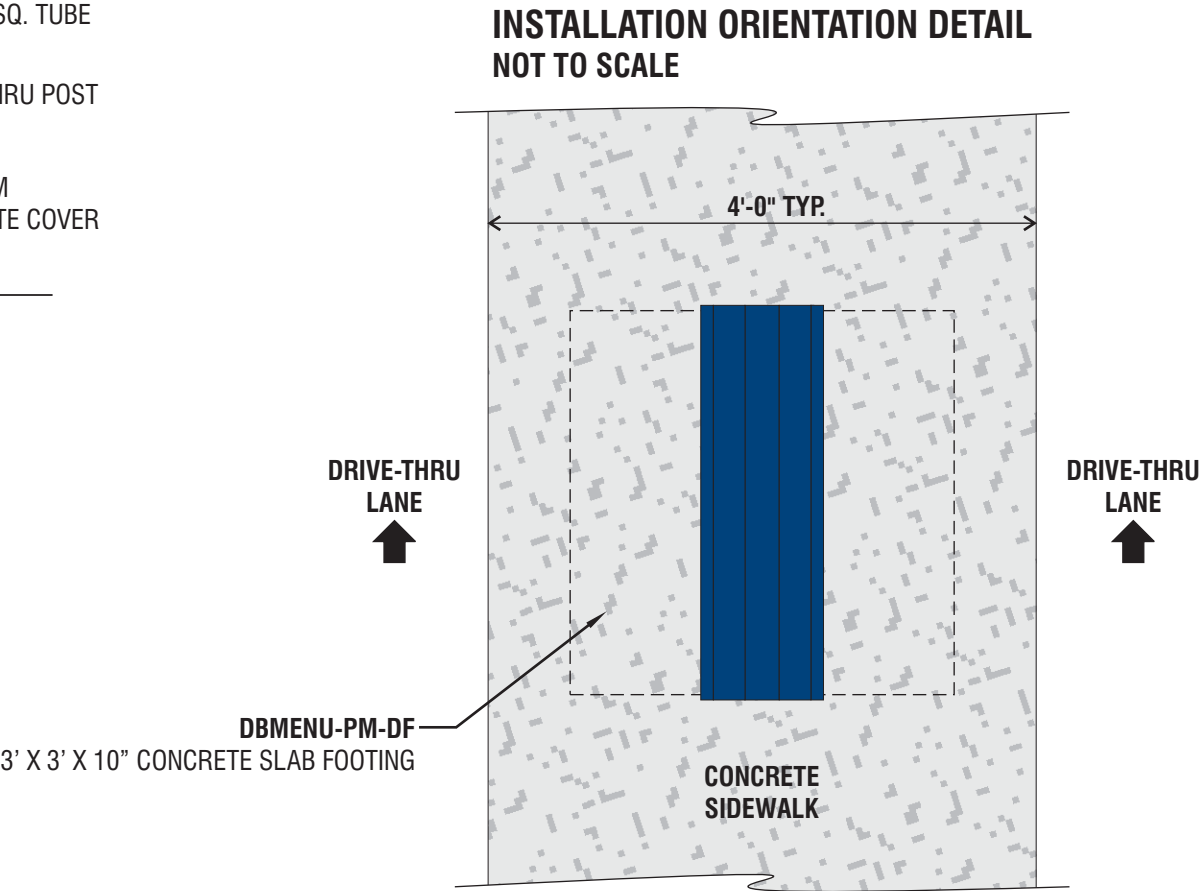
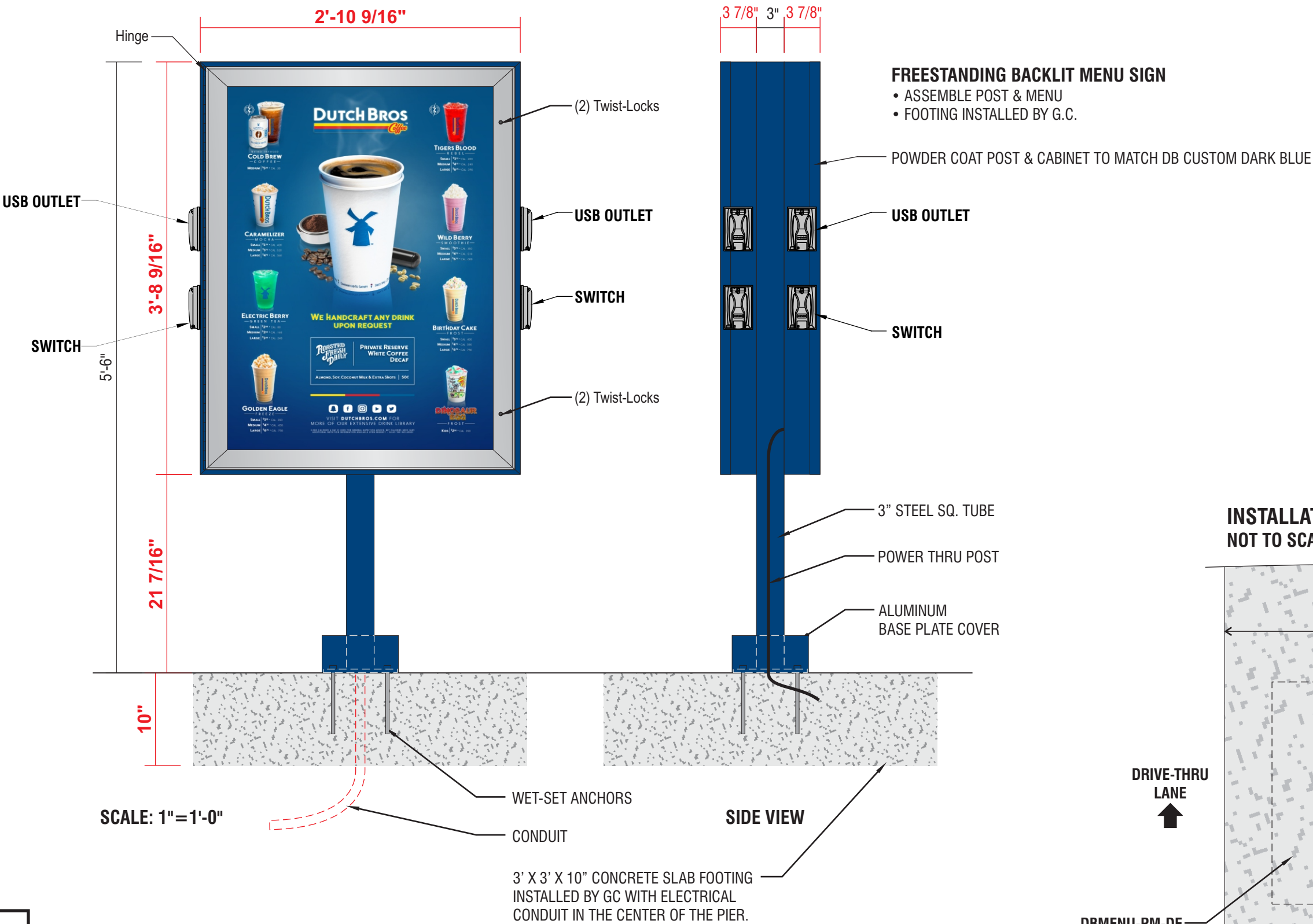
ES&A SIGN & AWNING  
89975 PRAIRIE RD. | EUGENE, OR 97402  
P 541.485.5546 | F 541.485.5813

COLOR CODE

DIGITAL PRINT

POWDER COATED  
DB CUSTOM DARK BLUE

POWDER COATED SILVER





FACTORY  
DRAWING

SCOPE OF WORK: MANUFACTURE & INSTALL (2) D/F NON-ILLUMINATED ‘DRIVE THRU’ SIGNS

Sign Area: 1' 3" x 2' 6" = 3.1 sq ft



SHOP DRAWING #:  
**32956G**

CLIENT:  
DUTCH BROS - M00102  
CHIPMAN & WARD  
LEE'S SUMMIT, MO 64063

DATE OF SHOP DRAWING:  
**7/22/21**

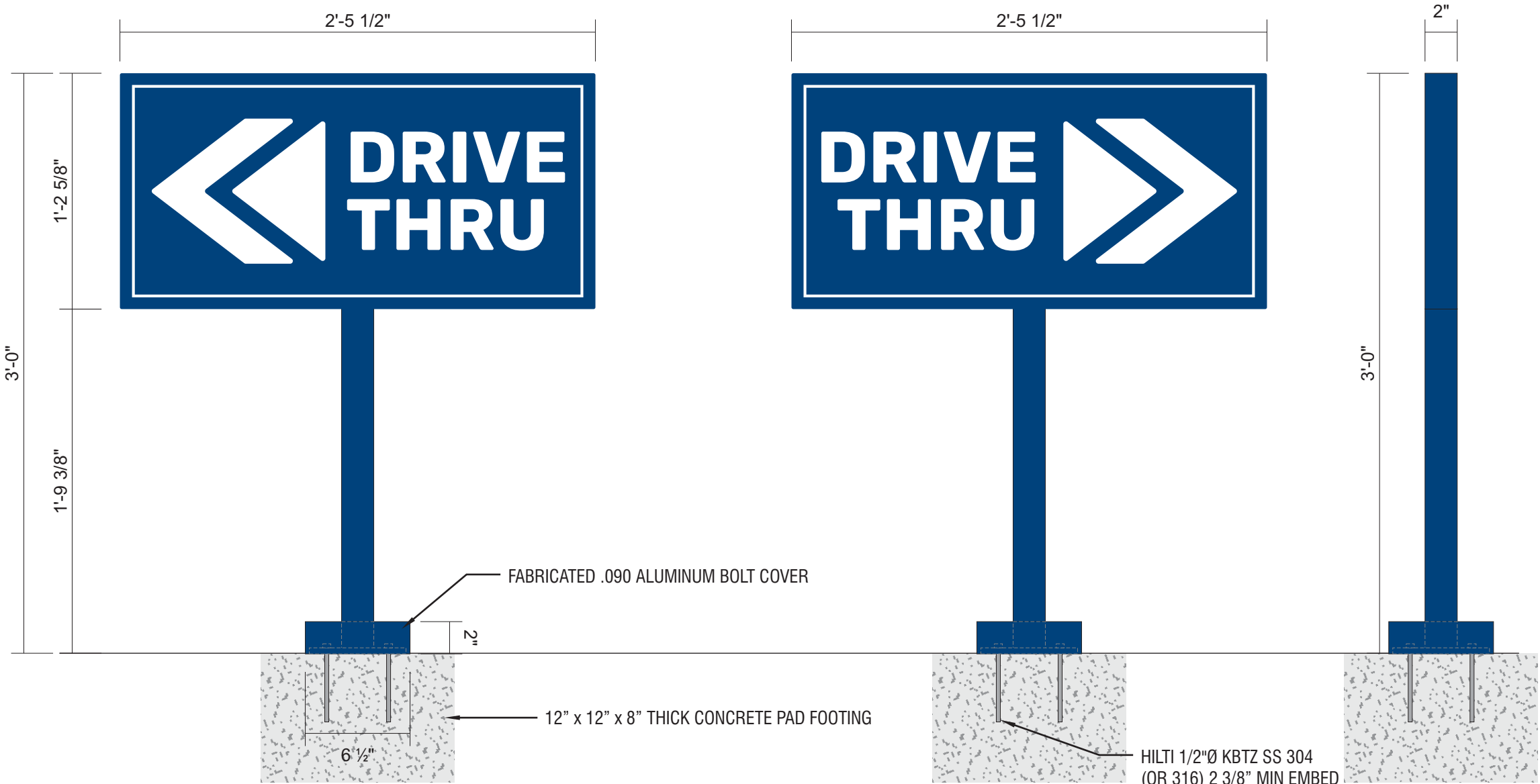
SHOP REVISIONS:

SALES:	CONCEPT DESIGN:	PROD. DESIGN:	PAGE NO:
NJ	CH	CH	I of I

ES&A SIGN & AWNING  
89975 PRAIRIE RD. | EUGENE, OR 97402  
P 541.485.5546 | F 541.485.5813

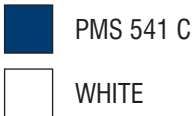
LAYOUT  
SCALE: 1 1/2"=1'-0"

SIDE VIEW



DIAMOND GRADE REFLECTIVE WHITE VINYL WITH DIGITALLY PRINTED PMS 541 C BLUE BACKGROUND  
2" X 2" SQUARE TUBE ALUMINUM FRAME & POST WITH ALUMINUM FACES & 3/8" X 6" X 6" PLATE  
FABRICATED .090 ALUMINUM BOLT COVER  
PAINT PMS 541 C  
INSTALL PLATE-MOUNT SIGN WITH HILTI KWIK BOLTS  
PAD FOOTING INSTALLED BY GC

COLOR CODE



FACTORY  
DRAWING

SCOPE OF WORK: MANUFACTURE & INSTALL (1) D/F NON-ILLUMINATED DIRECTIONAL SIGN

Sign Area: 1' 3" x 2' 6" = 3.1 sq ft



SHOP DRAWING #:

32956H

CLIENT:

DUTCH BROS - M00102  
CHIPMAN & WARD  
LEE'S SUMMIT, MO 64063

DATE OF SHOP DRAWING:

7/22/21

SHOP REVISIONS:

SALES:	CONCEPT DESIGN:	PROD. DESIGN:	PAGE NO:
NJ	CH	CH	I of I

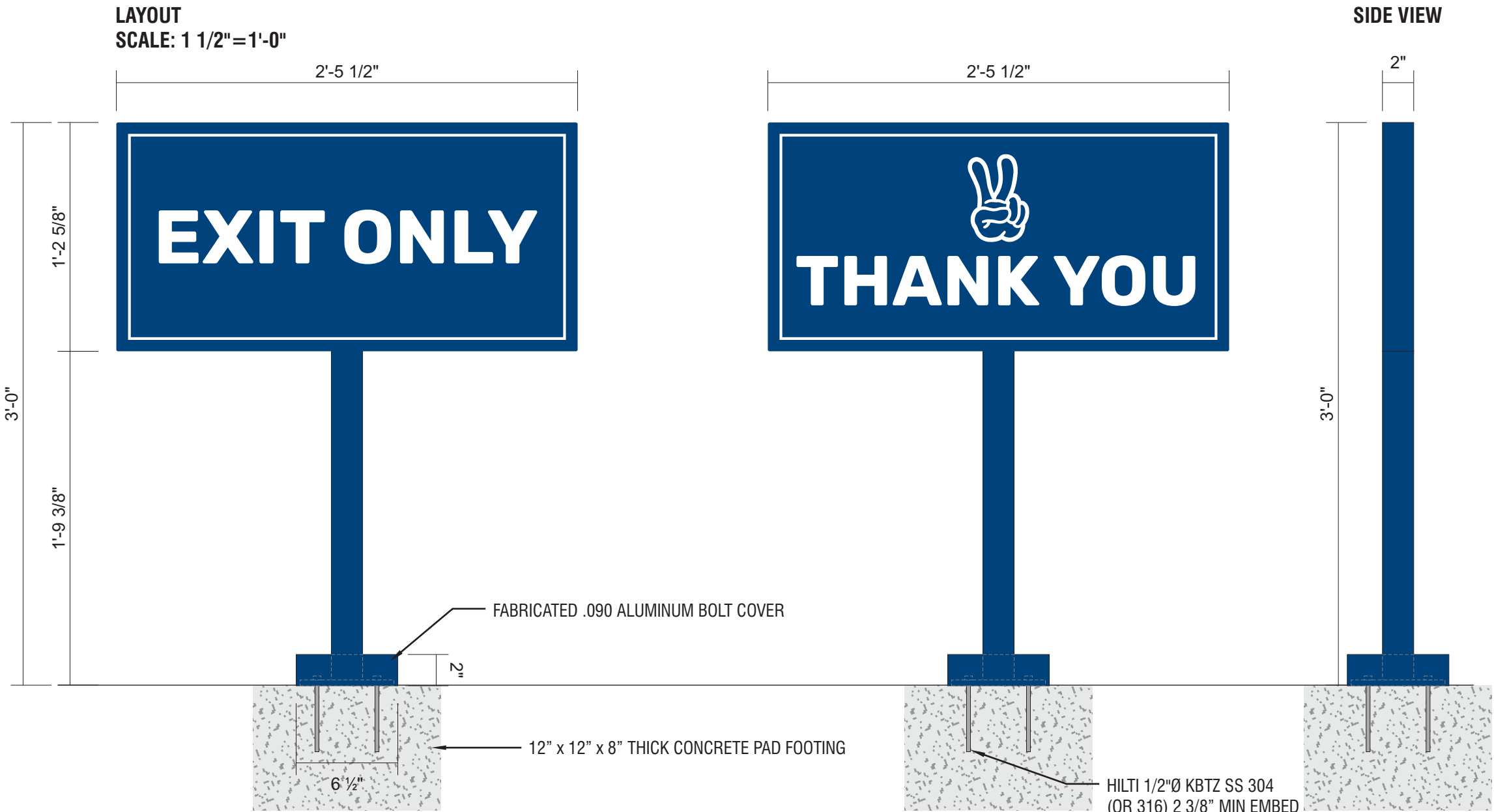
ES&A SIGN & AWNING

89975 PRAIRIE RD. | EUGENE, OR 97402

P 541.485.5546 | F 541.485.5813

COLOR CODE

	PMS 541 C
	WHITE



DIAMOND GRADE REFLECTIVE WHITE VINYL WITH DIGITALLY PRINTED PMS 541 C BLUE BACKGROUND  
2" X 2" SQUARE TUBE ALUMINUM FRAME & POST WITH ALUMINUM FACES & 3/8" X 6" X 6" PLATE  
FABRICATED .090 ALUMINUM BOLT COVER  
PAINT PMS 541 C  
INSTALL PLATE-MOUNT SIGN WITH HILTI KWIK BOLTS  
PAD FOOTING INSTALLED BY GC

FACTORY  
DRAWING

SCOPE OF WORK: MANUFACTURE & INSTALL (1) S/F POST MOUNTED DOUBLE ARM CLEARANCE BAR WITH PIVOTING ARMS



SHOP DRAWING #:

329561

CLIENT:

DUTCH BROS - M00102  
CHIPMAN & WARD  
LEE'S SUMMIT, MO 64063

DATE OF SHOP DRAWING:

7/22/21

SHOP REVISIONS:

SALES:

CONCEPT DESIGN:

PROD. DESIGN:

PAGE NO:

NJ

CH

CH

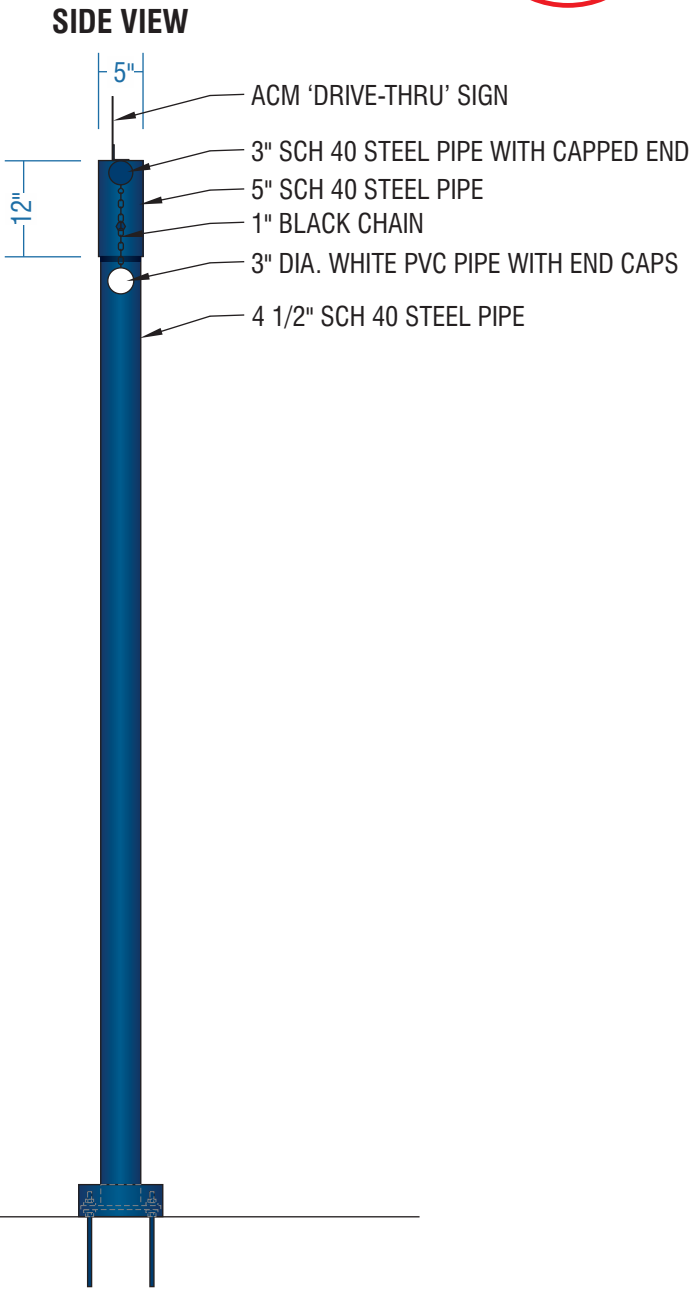
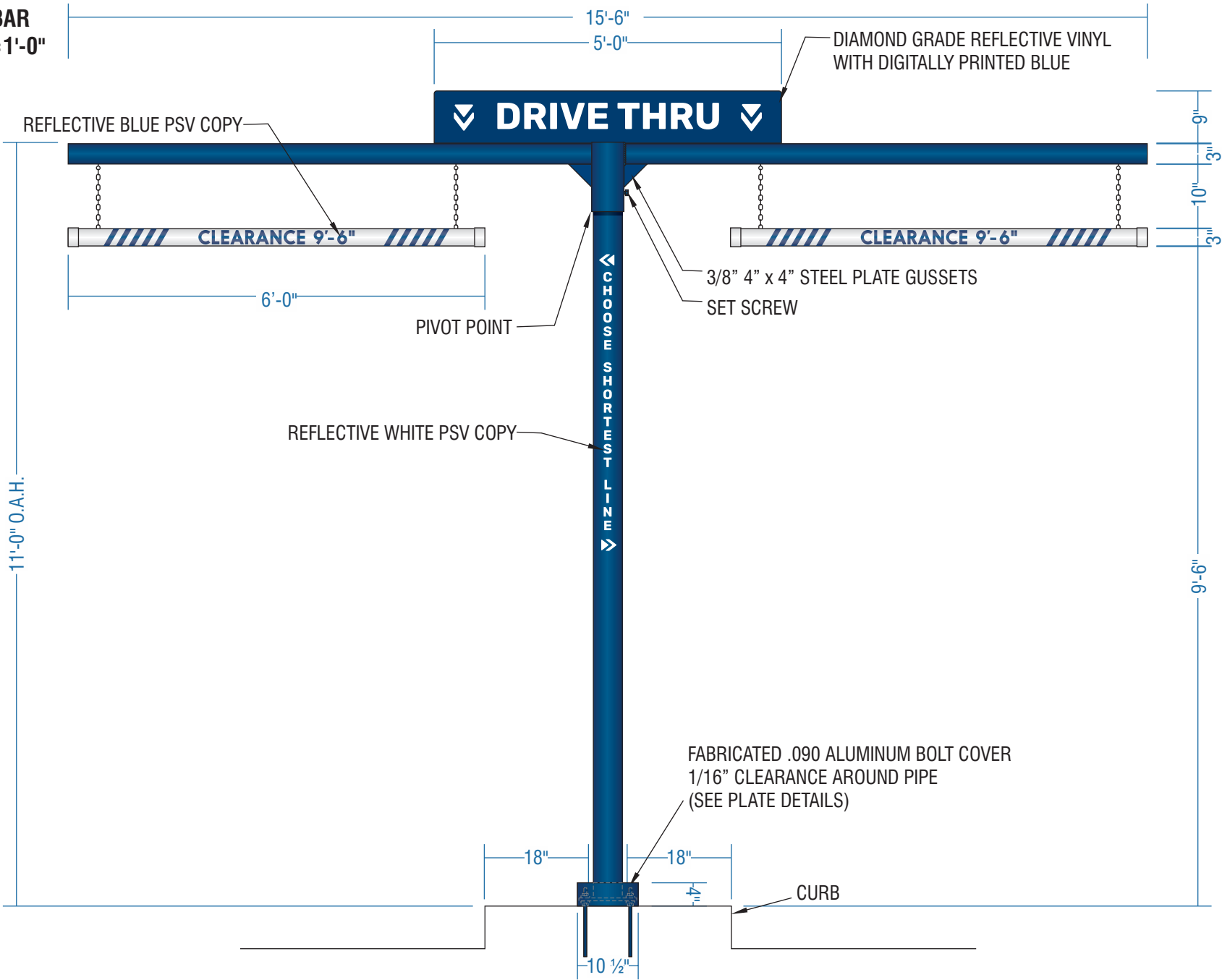
1 of 2

ES&A SIGN & AWNING

89975 PRAIRIE RD. | EUGENE, OR 97402

P 541.485.5546 | F 541.485.5813

CLEARANCE BAR  
SCALE: 1/2"=1'-0"



STEEL POLE SUPPORT STRUCTURE WITH FABRICATED .090 ALUMINUM BOLT COVER. PAINT DB CUSTOM DARK BLUE.  
REFLECTIVE WHITE PSV COPY APPLIED TO VERTICAL POLE.  
3" DIA. WHITE PVC CLEARANCE BAR WITH END CAPS AND 280-75 REFLECTIVE BLUE PSV TEXT & STRIPES.  
HANG WITH BLACK CHAIN SECURED TO BOTTOM OF POLE STRUCTURE.  
INCLUDE ONE SHEET REFLECTIVE VINYL NUMBERS MASKED FOR FIELD INSTALLATION.  
CLEARANCE NUMBERS TO BE FIELD MEASURED AND APPLIED. MEASURE FROM ASPHALT TO BOTTOM OF OVERHANG MINUS 6".  
ACM 'DRIVE-THRU' SIGN WITH DIAMOND GRADE REFLECTIVE VINYL WITH DIGITALLY PRINTED BLUE.  
DIAMOND GRADE REFLECTIVE WHITE VINYL WITH DIGITALLY PRINTED PMS 541 C BLUE BACKGROUND.  
INSTALL STEEL POLE PLATE-MOUNTED WITH LEVELING NUTS ONTO G.C. PROVIDED FOOTING.

COLOR CODE

- WHITE
- 280-75 REFLECTIVE BLUE PSV
- DB CUSTOM DARK BLUE

FACTORY  
DRAWING

ENGINEERING DETAILS

SHOP DRAWING #:

329561

CLIENT:

DUTCH BROS - M00102  
CHIPMAN & WARD  
LEE'S SUMMIT, MO 64063

DATE OF SHOP DRAWING:

7/22/21

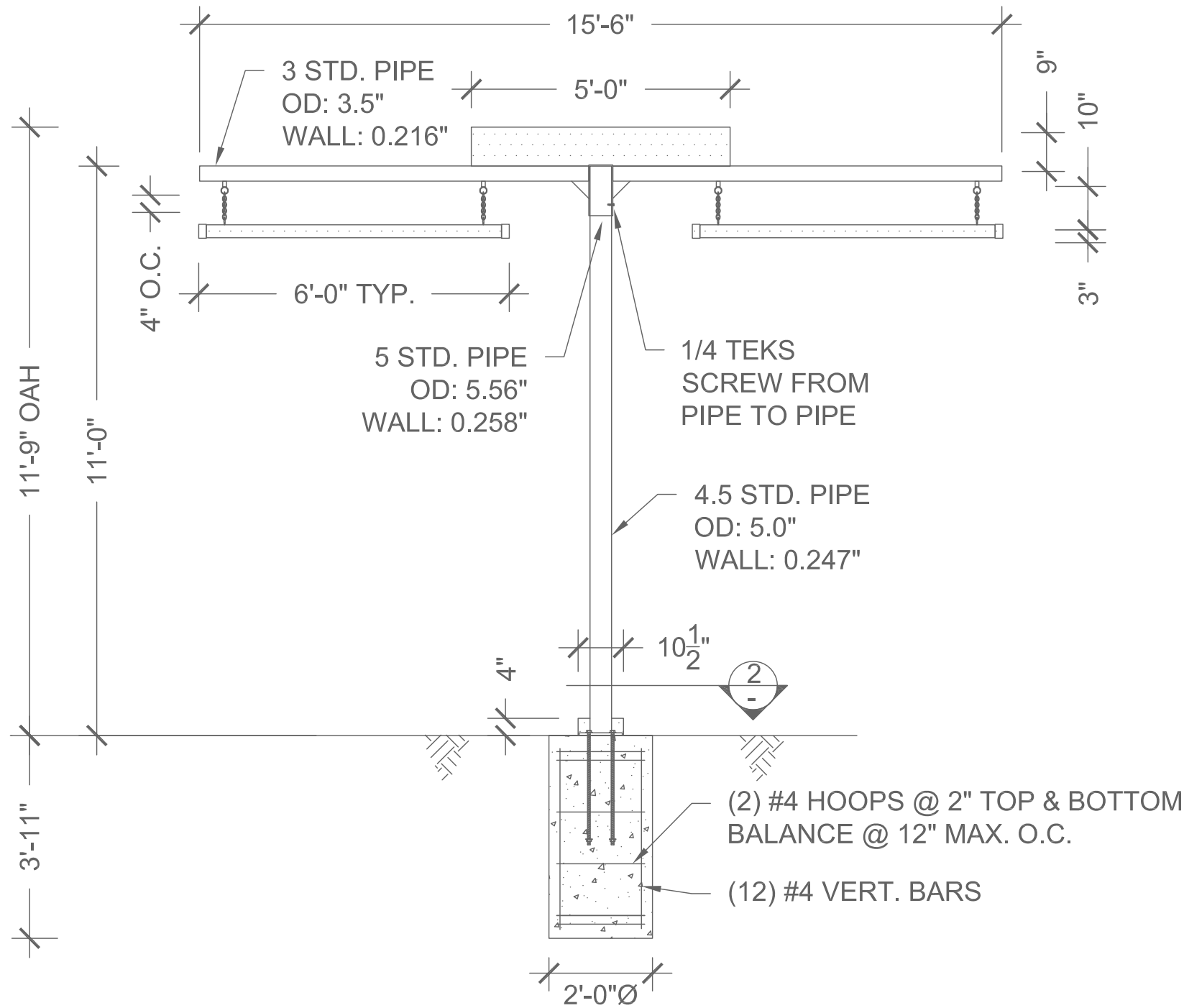
SHOP REVISIONS:

SALES:	CONCEPT. DESIGN:	PROD. DESIGN:	PAGE NO:
NJ	CH	CH	2 of 2

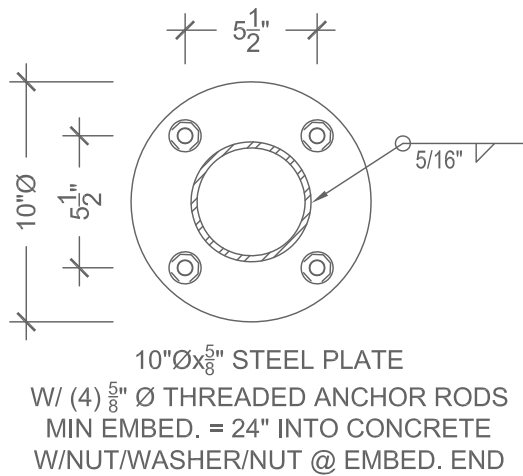
ES&A SIGN & AWNING

89975 PRAIRIE RD. | EUGENE, OR 97402

P 541.485.5546 | F 541.485.5813



ELEVATION  
SCALE: 3/8"=1'-0"



BASE PLATE  
SCALE: 1 1/2"=1'-0"



FACTORY  
DRAWING

SCOPE OF WORK: MANUFACTURE & INSTALL (1) D/F ILLUMINATED MONUMENT SIGN



SHOP DRAWING #:  
**32956J1**

CLIENT:  
DUTCH BROS - M00102  
CHIPMAN & WARD  
LEE'S SUMMIT, MO 64063

DATE OF SHOP DRAWING:  
**9/9/21**

SHOP REVISIONS:  
9.30.21 INCREASED PIPE DIA. BY 2"  
& FOOTING DEPTH BY 1'-2".  
DECREASED FOOTING WIDTH BY 6".  
10.20.21 REDUCED CABINET &  
O.A.W. OF SIGN.  
11.2.21 DECREASED FOOTING BY 2"

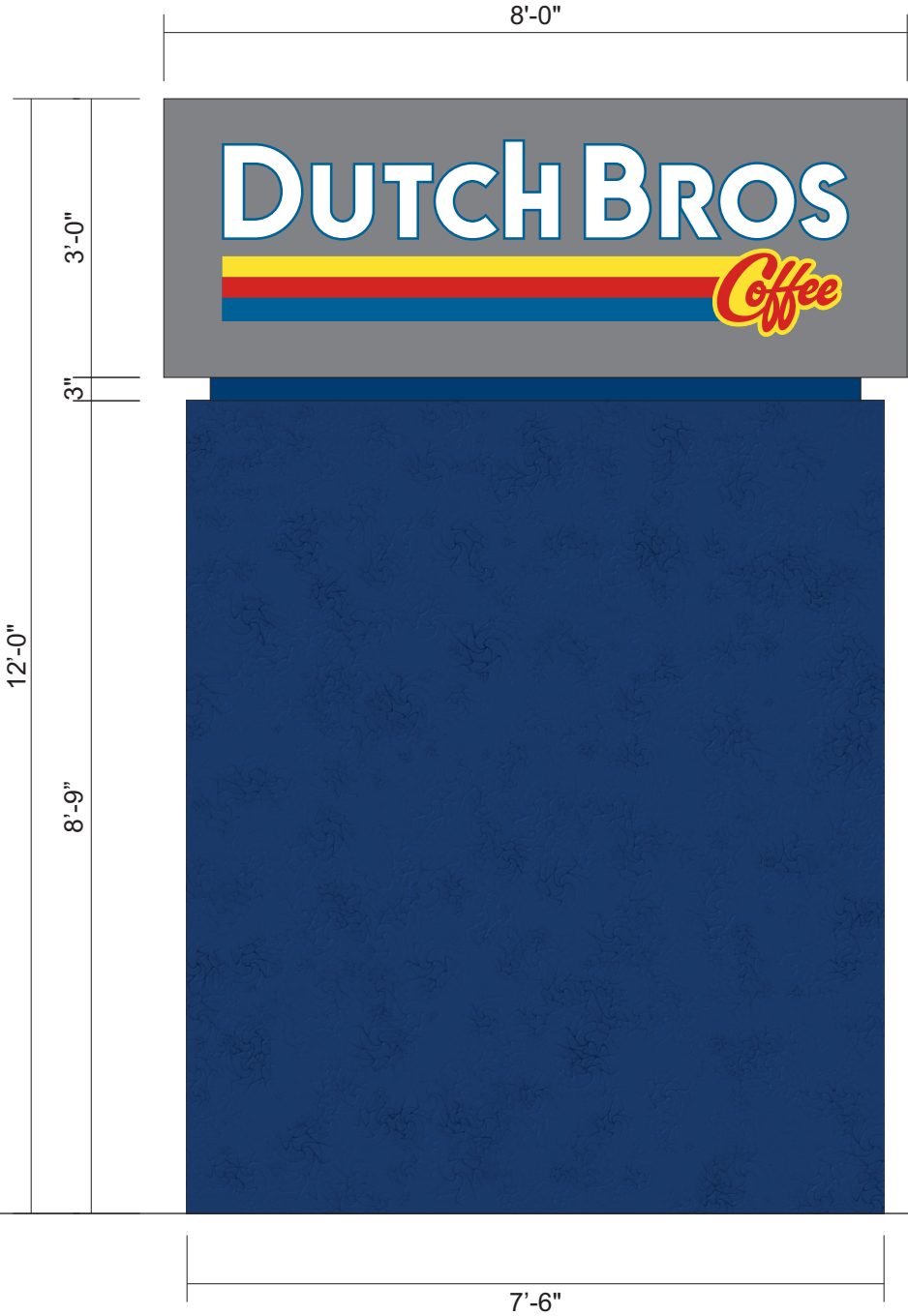
SALES:	CONCEPT DESIGN:	PROD. DESIGN:	PAGE NO:
NJ	CH	CH	1 of 2

ES&A SIGN & AWNING  
89975 PRAIRIE RD. | EUGENE, OR 97402  
P 541.485.5546 | F 541.485.5813

COLOR CODE

- 230-015 YELLOW PSV
- 230-33 RED PSV
- 230-127 INTENSE BLUE PSV
- WHITE
- DB CUSTOM GREY
- DB CUSTOM DARK BLUE

FRONT VIEW  
SCALE: 1/2"=1'-0"



SIDE VIEW  
SCALE: 1/2"=1'-0"



FABRICATED ALUMINUM CABINET PAINTED DB CUSTOM GREY.  
REVEAL PAINTED DB CUSTOM DARK BLUE.  
BACKED-UP WHITE ACRYLIC LETTERS.  
1ST SURFACE 230-015 YELLOW, 230-33 RED, & 230-127 INTENSE BLUE PSV.  
WHITE LED ILLUMINATION.  
FABRICATED ALUMINUM SKIRT PAINTED DB CUSTOM DARK BLUE WITH MEDIUM TEXTURE COAT.

# FACTORY DRAWING

SHOP DRAWING #:

32956J1

CLIENT:

DUTCH BROS - M00102  
CHIPMAN & WARD  
LEE'S SUMMIT, MO 64063

DATE OF SHOP DRAWING:

9/9/21

SHOP REVISIONS:

9.30.21 INCREASED PIPE DIA. BY 2”  
& FOOTING DEPTH BY 1’-2”.  
DECREASED FOOTING WIDTH BY 6”.  
10.20.21 REDUCED CABINET &  
O.A.W. OF SIGN.  
11.2.21 DECREASED FOOTING BY 2”

SALES:	CONCEPT. DESIGN:	PROD. DESIGN:	PAGE NO:
NJ	CH	CH	2 of 2

ES&A SIGN & AWNING

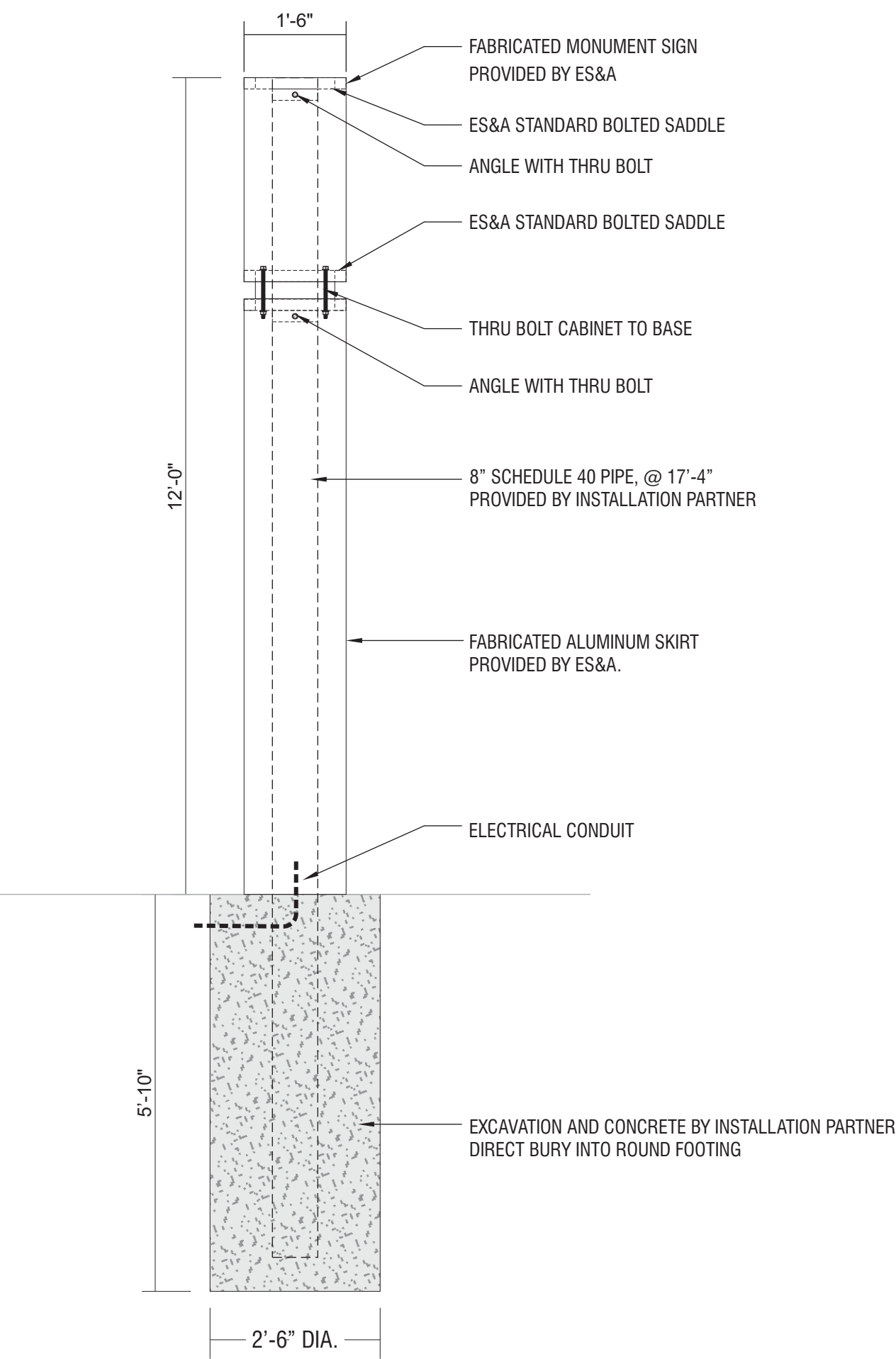
89975 PRAIRIE RD. | EUGENE, OR 97402

P 541.485.5546 | F 541.485.5813

## ATTACHMENT DETAIL

SIDE VIEW

SCALE: 1/2"=1'-0"



FACTORY  
DRAWING

SCOPE OF WORK: MANUFACTURE & INSTALL (1) SET OF BUILDING ADDRESS NUMBERS



SHOP DRAWING #:

32956K

CLIENT:

DUTCH BROS - M00102  
CHIPMAN & WARD  
LEE'S SUMMIT, MO 64063

DATE OF SHOP DRAWING:

10/20/21

SHOP REVISIONS:

SALES:	CONCEPT. DESIGN:	PROD. DESIGN:	PAGE NO:
NJ	CH	CH	I of I

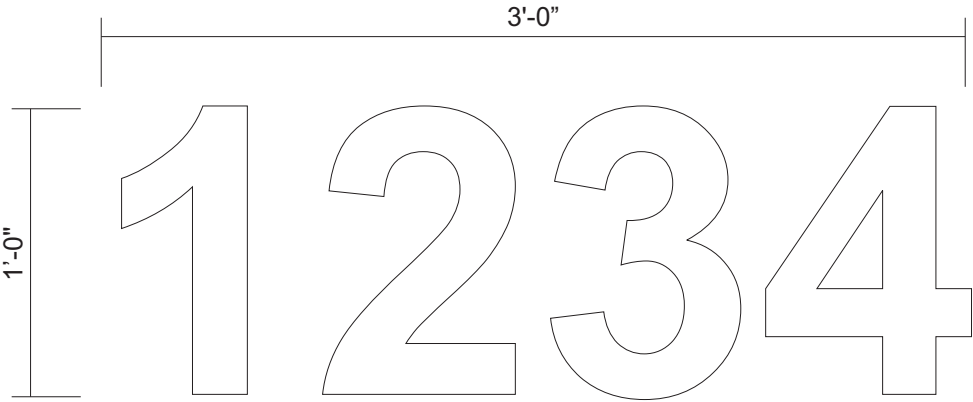
ES&A SIGN & AWNING

89975 PRAIRIE RD. | EUGENE, OR 97402

P 541.485.5546 | F 541.485.5813

BUILDING ADDRESS

SCALE: 1 1/2"=1'-0"



ADDRESS NUMBERS:

FONT: ARIAL BOLD

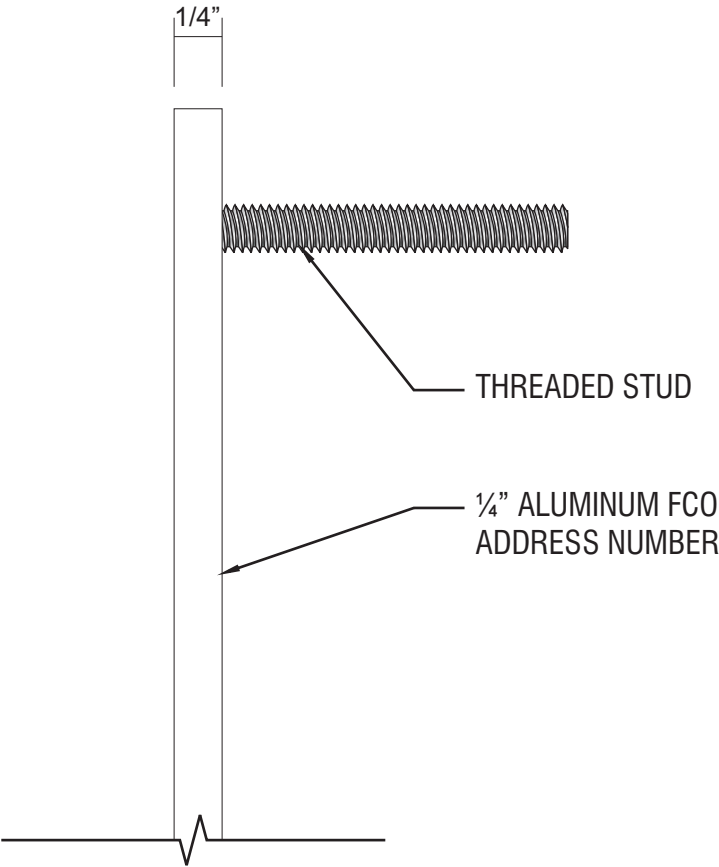
MATERIAL: 1/4" THICK ALUMINUM

COLOR: PAINTED SATIN WHITE

INSTALLATION: STUD MOUNTED FLUSH TO BUILDING

SIDE DETAIL

FULL SCALE



COLOR CODE



SATIN WHITE PAINT