

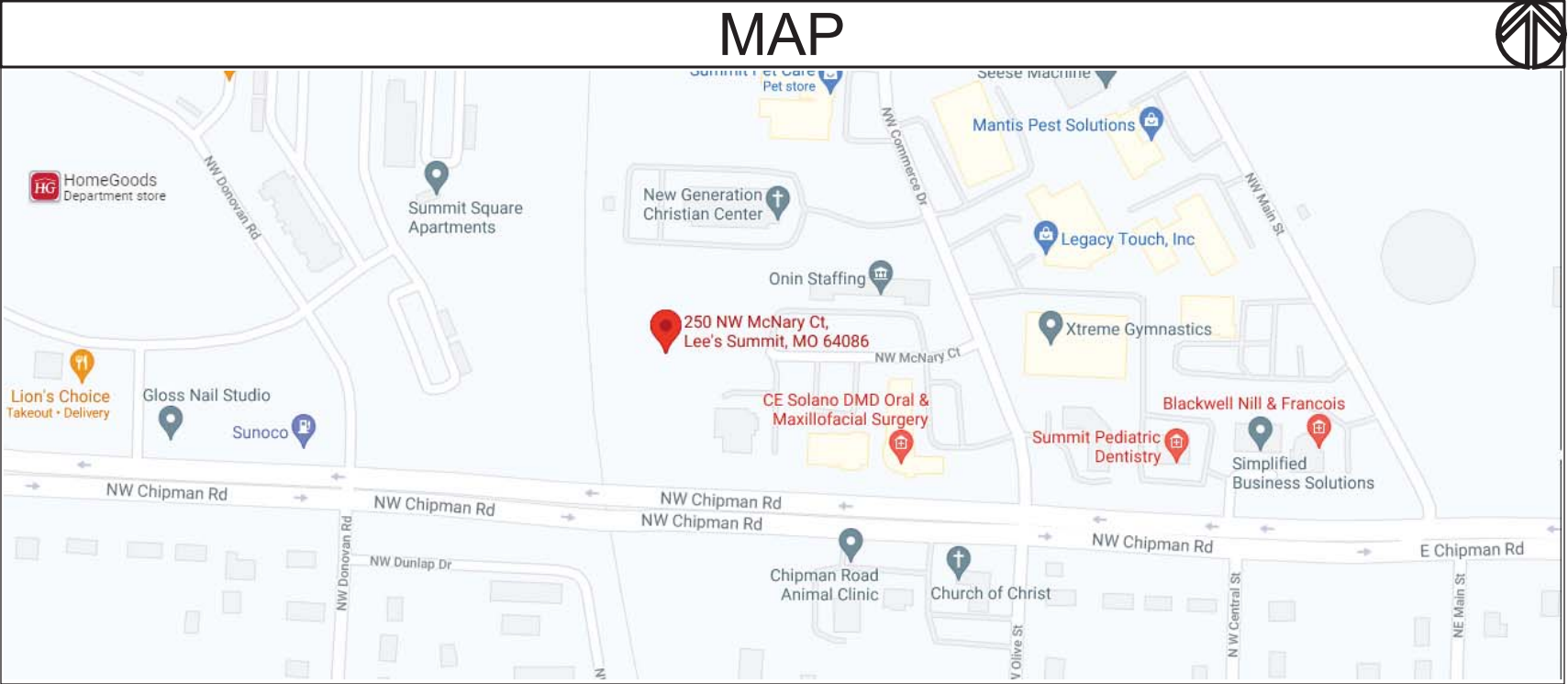
PROJECT SCHEDULE		
SIGN TYPE/ DESCRIPTION:	QTY.:	PG.
A. RELOCATE EXISTING ILLUM. S/F CABINET SIGN FROM OLD HOSPITAL TO NEW LOCATION.	ONE (1)	5
B. ILLUM. FACE-LIT CHANNEL LETTERS SIGN.	ONE (1)	7

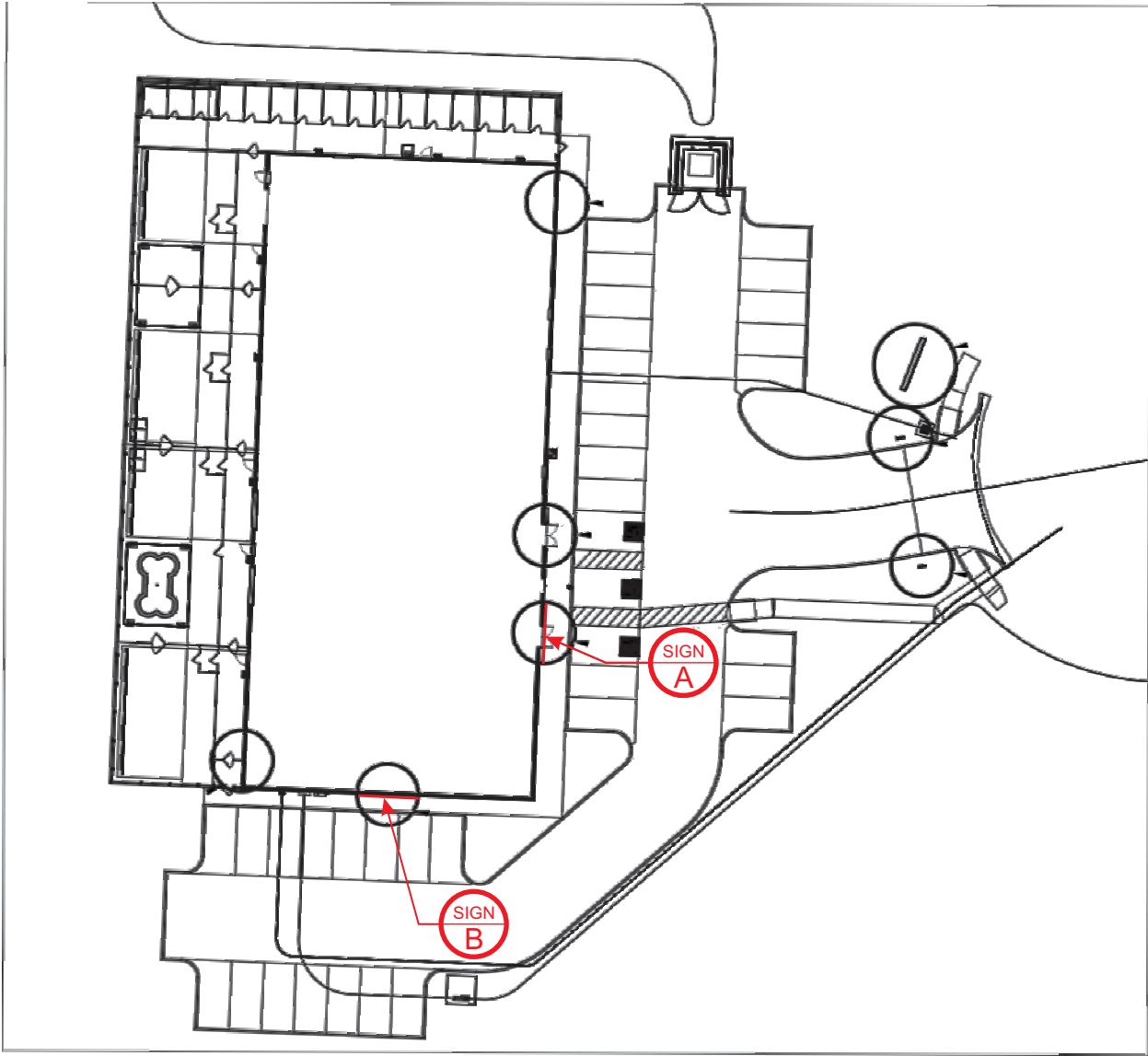
PROJECT:

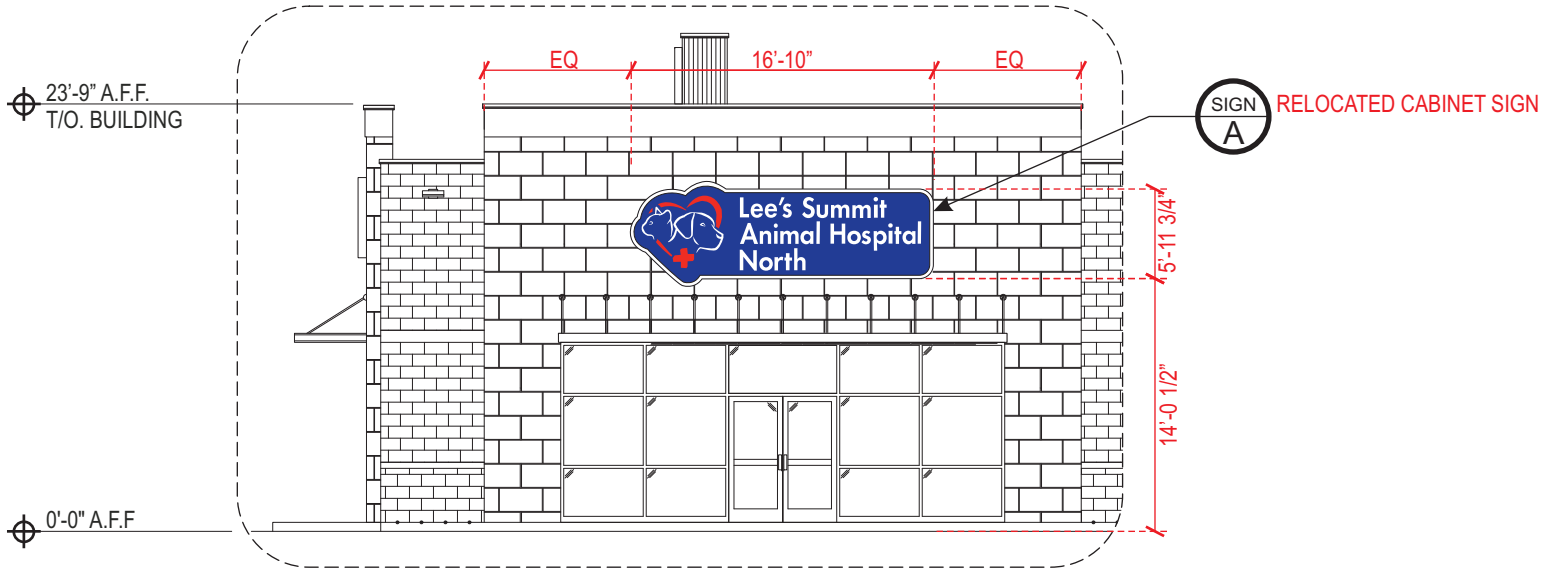
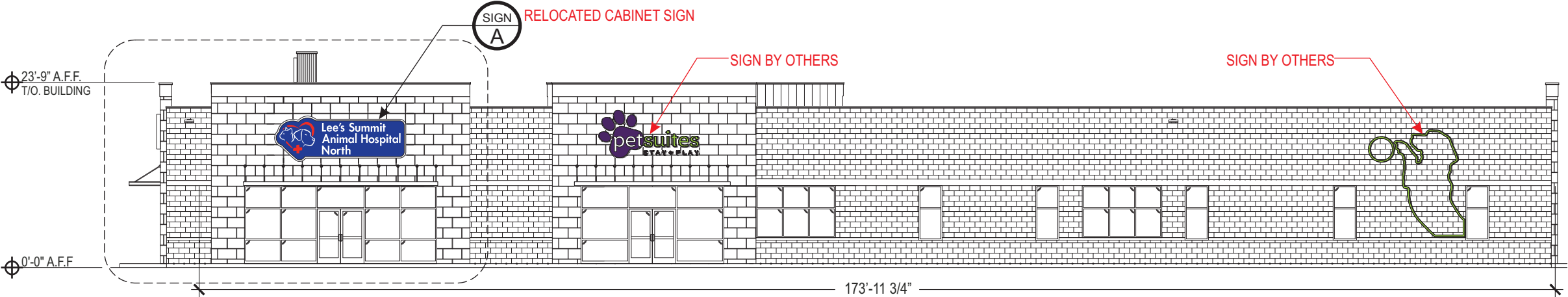



**LEE'S ANIMAL HOSPITAL NORTH**  
 250 MCNARY CT.  
 LEE'S SUMMIT, MO 64086

REVISIONS			
#	DATE	DB	NOTES
R1	10/1/2021	BZ	CHANGE NEW CABINET TO RELOCATING EXISTING CABINET SIGN TO NEW LOCATION.





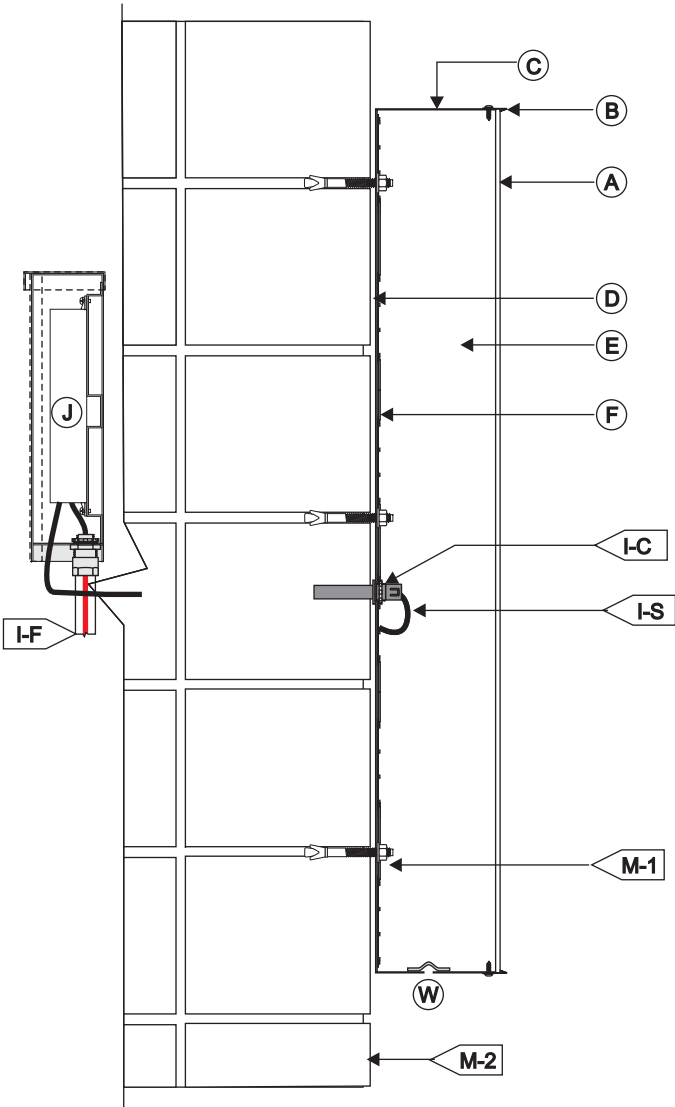




QTY: ONE (1)

AREA SQ. FT.: 55.0" x 173.5" = 66.26 SQ. FT.






TRIMCAP FACE LIT CHANNEL LETTER / LED ILLUM. / EXTERIOR INSTALL / FLUSH MOUNTED

SCALE: N.T.S.

A FACE	
MATERIAL:	3/16" WHITE ACRYLIC #2447
VINYL:	TRANSLUCENT VINYL APPLIED TO FACE
COLOR/FINISH:	MATCH PMS 660 C "LIGHT BLUE" / TRANSLUCENT
APPLICATION:	1ST SURFACE OF ACRYLIC FACE
B TRIMCAPS	
SIZE / FINISH	1" / MATCH RETURNS
C RETURNS	
DEPTH:	5"
MATERIAL:	ALUM. .040
COLOR:	MATCH PMS 660 C "LIGHT BLUE"
FINISH:	SATIN
D BACKS:	
MATERIAL:	3MM ACM
COLOR/FINISH:	WHITE SATIN
E INSIDE OF CAN	
COLOR:	PRE-COAT WHITE
F ILLUMINATION:	
TYPE:	STANDARD 6500K WHITE LEDS
ALL WIRES TO BE TERMINATED W/ A MECHANICAL UL LISTED FASTENER	

I WIRING	
I-C	7/8" DIA. HOLE @ LEXAN W/ PAIGE WALL BUSTER
	CONNECTOR & CONDUIT.
I-F	TO ELECTRICAL FEED
I-S	U.L. APPROVED LOW VOLTAGE CLASS II WIRING
	ALL CONNECTIONS TO BE IN WATERPROOF BOXES
J POWER SUPPLY	
TYPE:	REMOTE LED POWER SUPPLY HOUSE IN FRONT
	ACCESS WEATHER-PROOF LED POWER SUPPLY BOX.
VOLTAGE;	120V
M MOUNTING	
SEE MOUNTING NOTE.	
M-1:	MIN. 3/8" EXPANSION ANCHOR BOLT. (VERIFY FIELD
	CONDITION AND MOUNTING REQUIREMENTS)
M-2:	EXISTING BRICK SIGN BAND FASCIA
W WEEP HOLES:	
TYPE:	1/4" DIA. WITH COVER

120V INSTALL	1. CUSTOMER G.C. TO PROVIDE ADEQUATE WOOD OR MTL. BLOCKING IN CORRELATION W/ FACADE FRAMING AS REQUIRED. 2. INSTALLER IS TO V.I.F. & PROVIDE THE PROPER NON-CORROSIVE MOUNTING HARDWARE TO ENSURE SAFE INSTALLATION. 3. ALL EXTERIOR FACADE PENETRATIONS TO BE WATERTIGHT. 4. INSTALLATION TO MEET CURRENT N.E.C., U.L. & LOCAL CODES. LOCATION OF THE DISCONNECT SWITCH AFTER INSTALLATION SHALL COMPLY WITH ARTICLE 600.6(A) (1) OF THE NATION ELECTRICAL CODE	ELECTRICAL	1. ALL ELECTRICAL COMPONENTS TO BE U.L. APPROVED. 2. CUSTOMER IS RESPONSIBLE FOR ONE (1) 120v/ 20a DEDICATED CIRCUIT w/ GROUND PER SIGN TO WITHIN 6' OF SIGN. 3. THIS SIGN IS INTENDED TO BE INSTALLED IN ACCORDING W/ THE REQUIREMENTS OF ARTICLE 600 OF THE NATIONAL ELECTRICAL CODE AND/OR OTHER APPLICABLE LOCAL CODES. THIS INCLUDES PROPER GROUNDING & BONDING OF THE SIGN.	FABRICATOR	1. PLACEMENT OF LIGHTING ELEMENTS FOR OPTIMUM ILLUMINATION OF SIGN TO BE DETERMINED IN PRODUCTION. 2. MANUFACTURER & U.L. LABELS TO BE APPLIED & VISIBLE FROM THE GROUND. LOCATED ON THE LAST CHANNEL LETTER OR END OF THE SIGN BOX/FREESTANDING SIGN	 ALL ELECTRICAL COMPONENTS ARE TO BE UL APPROVED