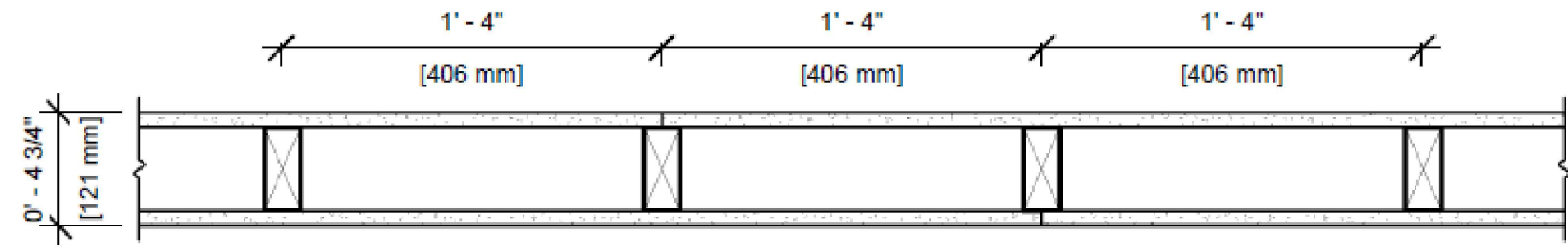


UL DESIGN NO. U305

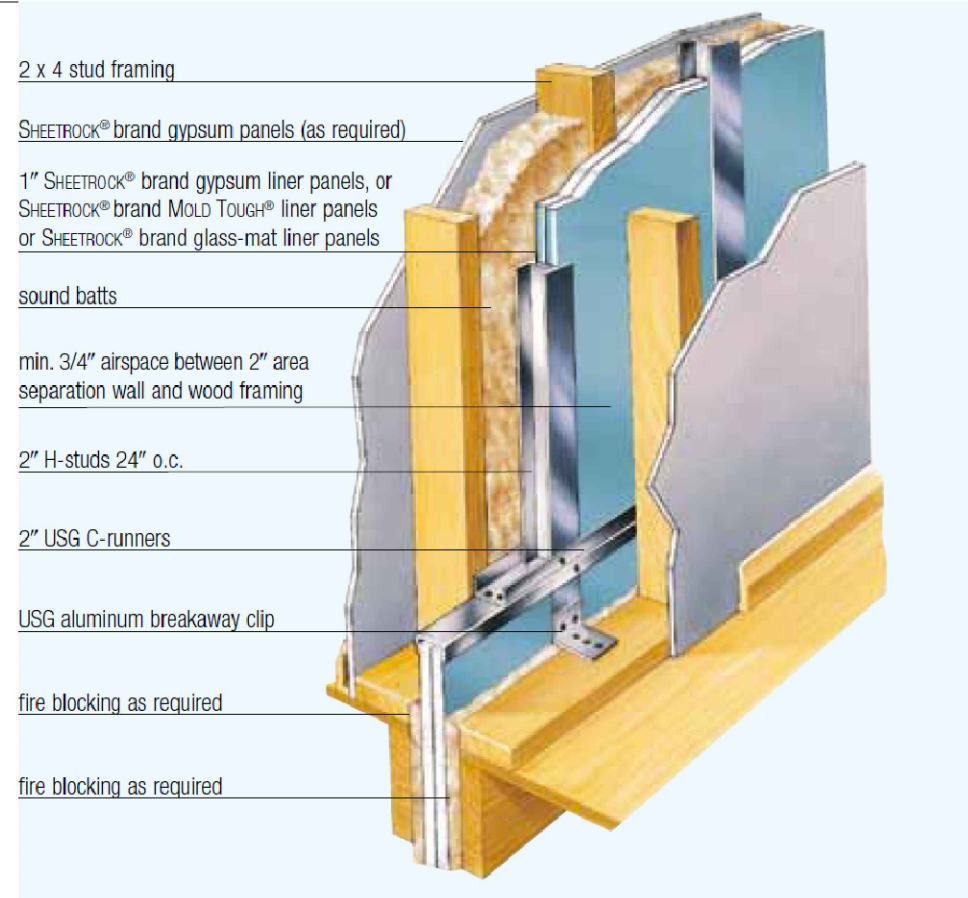
FIRE RATING: 1 Hour
STC: 32
SOUND TEST: RAL-TL11-129
SYSTEM THICKNESS: 4 3/4"



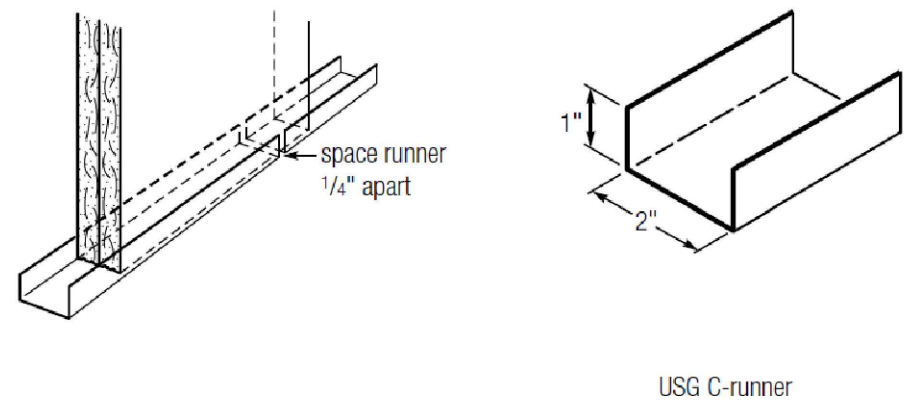
ASSEMBLY OPTIONS:

GYPSUM BOARD: ONE LAYER 5/8" THICK GYPSUM BOARD (UL TYPE SCX™)
WOOD STUDS: 2X4 WOOD STUDS, 16" O.C.
GYPSUM BOARD: ONE LAYER 5/8" THICK GYPSUM BOARD (UL TYPE SCX™)

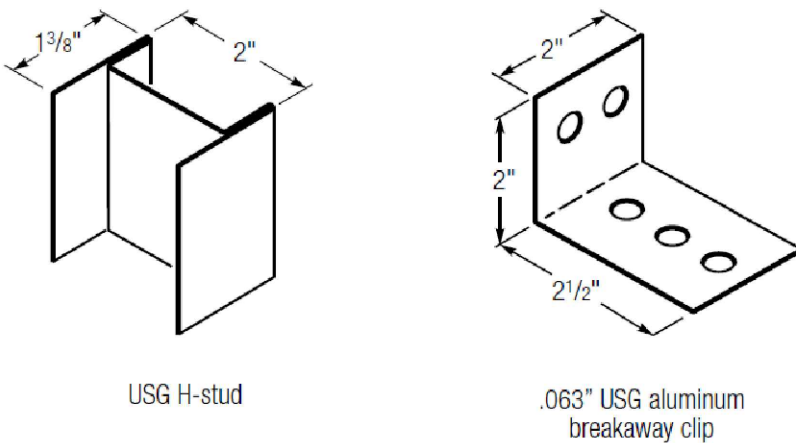
Typical Area Separation Wall Assembly



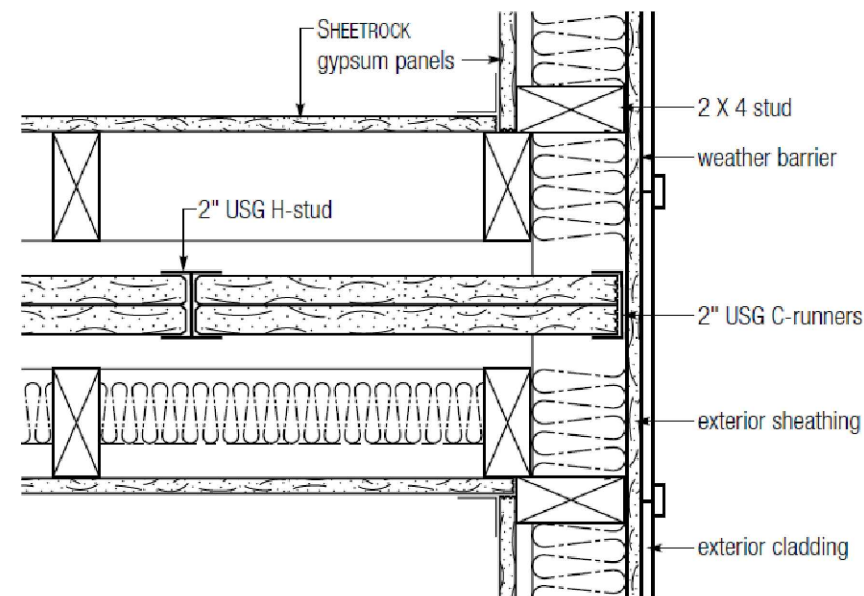
Runner Installation



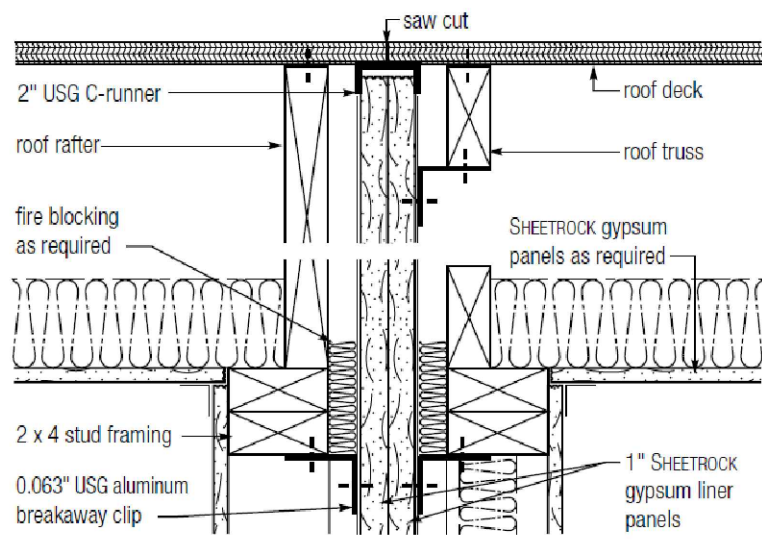
Components



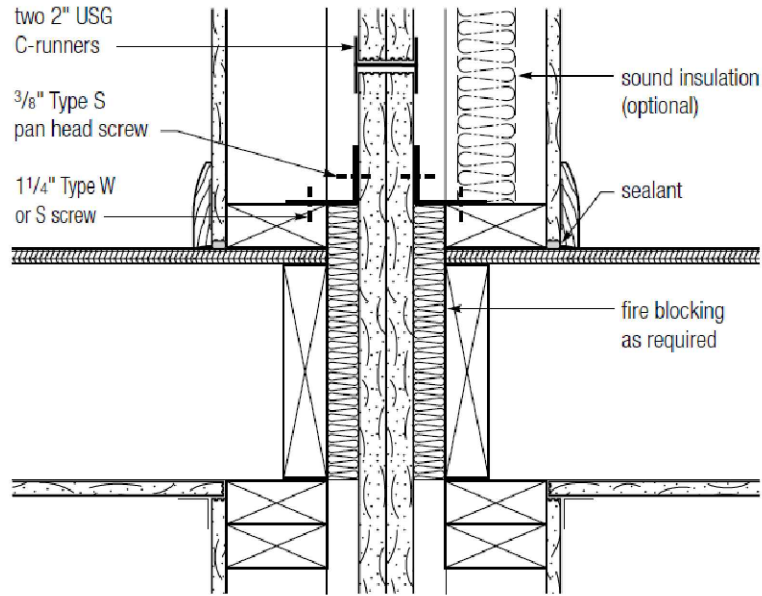
Exterior Wall Intersection (as required)



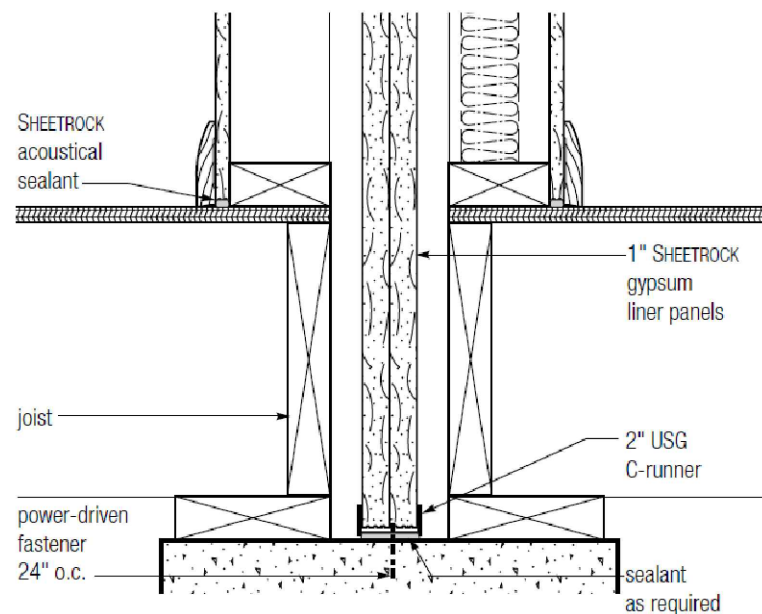
Intersection at Roof



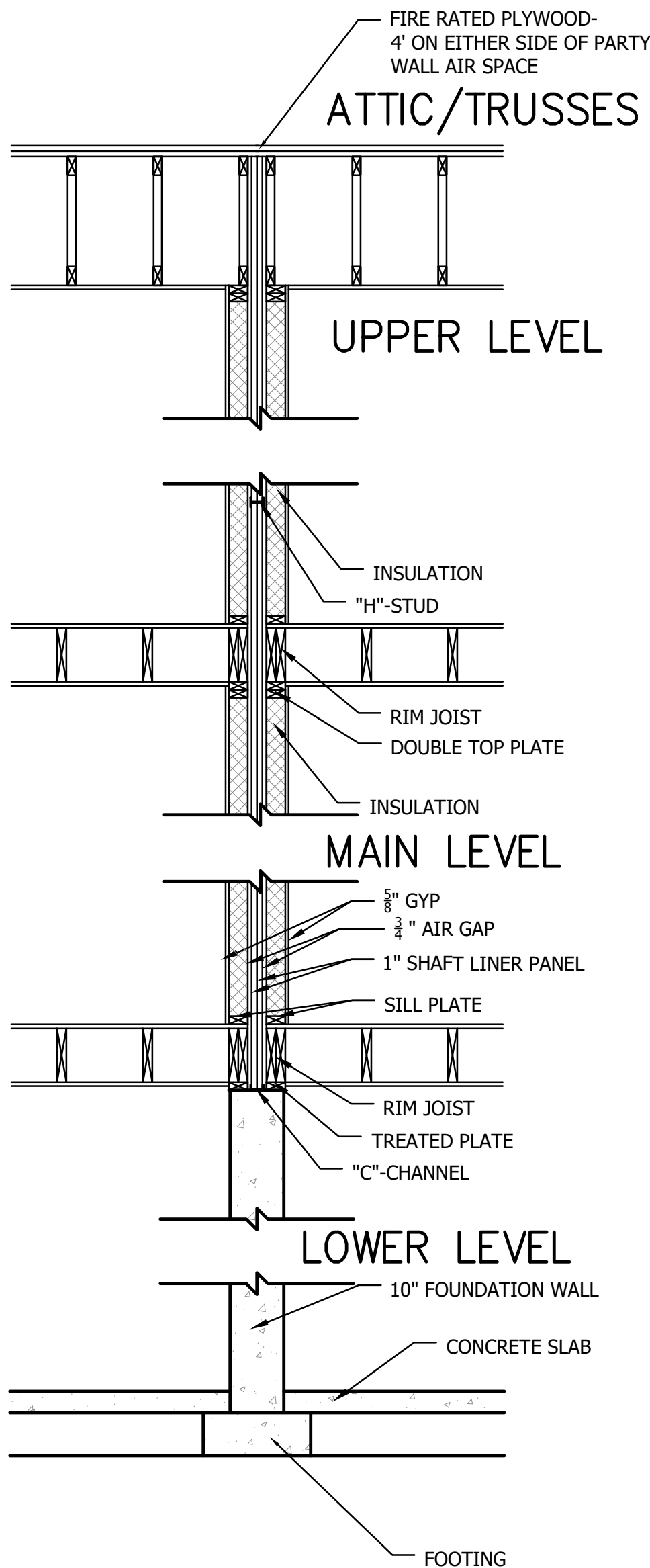
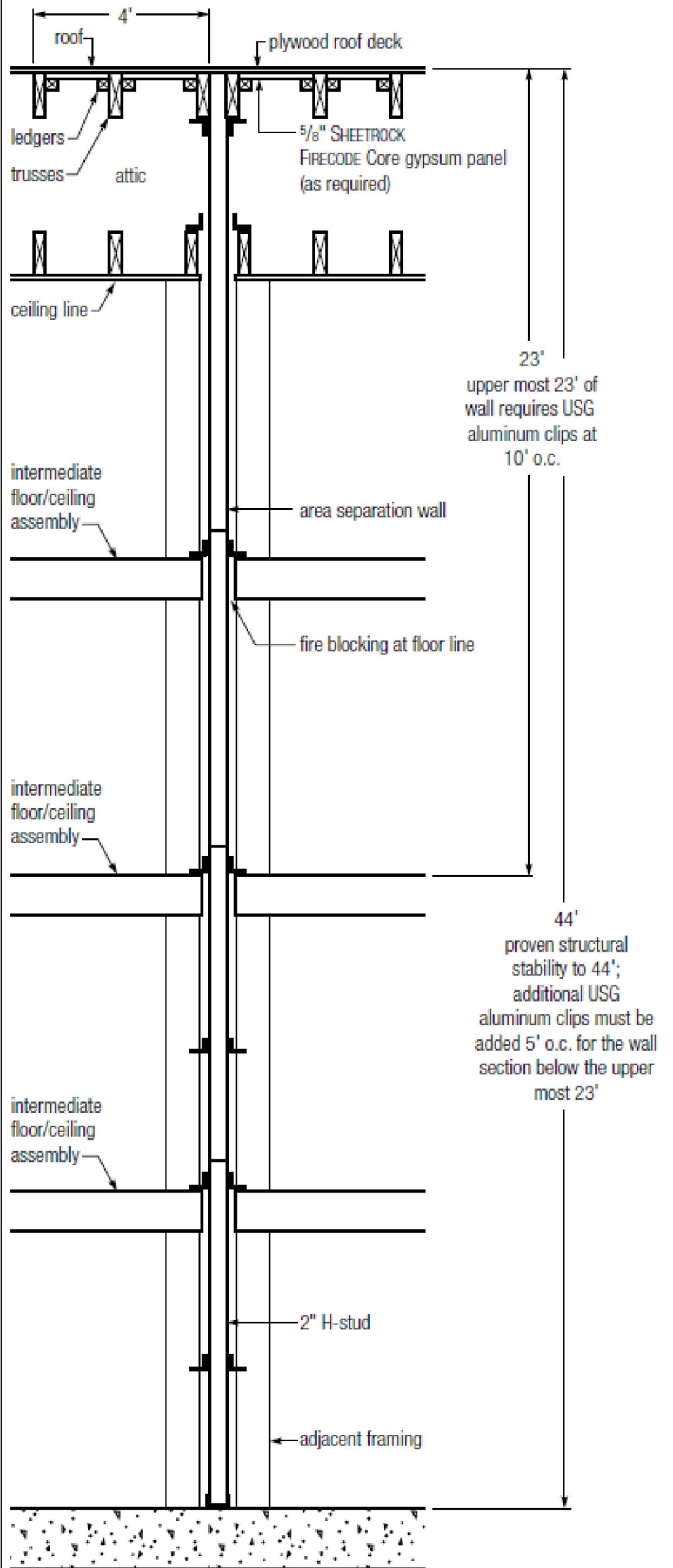
Intermediate Floor



Foundation



Clip Spacing Requirements



PARTY WALL DETAIL ②
SCALE: N.T.S.

USG AREA SEPARATION WALL
AS PER R302.1

GENERAL NOTES

ROOF AND CEILING FRAMING ARE PRE-ENGINEERED ROOF TRUSSES.

ASPHALT SHINGLES MIN 2/12. FLASH ALL PENETRATIONS AND INTERSECTIONS.

VENT EACH ENCLOSED ATTIC SPACE. NET AREA OPENING = 1/50TH OF VENTED AREA OR 1/300TH IF 580% OF VENTING NEAR TOP.

BUILD CRICKET VALLEY AWAY FROM INTERSECTION FOR POSITIVE DRAINAGE. SEE FRAMING SPECIFICATIONS FOR DETAILS.

DIMENSIONAL LUMBER IS LABELED PER INDUSTRY STANDARD TERMINOLOGY. ACTUAL LUMBER SIZING IS EXPECTED TO VARY PER VENDOR.

HVAC DUCTWORK RUNNING THROUGH ATTIC SHALL BE HUNG FROM ABOVE TO ALLOW COMPLETE INSULATION SURROUND.

PROVIDE BLOCKING AT ALL CEILING JUMPS FOR INSULATION.

PROVIDE FOAM INSULATION AT EXTERIOR WHERE MAIN LEVEL ROOF LINE MEETS UPPER LEVEL WALLS.

CPG DBA

clover
&
hive

120 SE 30TH ST.
LEE'S SUMMIT, MO 64082
816-246-6700

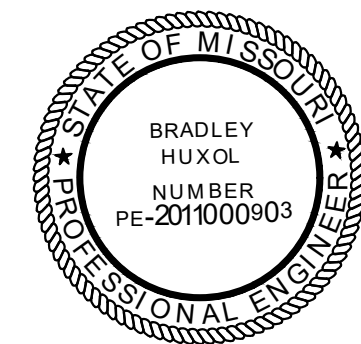
COPYRIGHT 2020

THIS DRAWING HAS BEEN PREPARED BY CLOVER AND HIVE, OR UNDER THEIR DIRECT SUPERVISION AS AN INSTRUMENT OF SERVICE AND IS INTENDED FOR USE ONLY ON THIS PROJECT. ALL DRAWINGS, SPECIFICATIONS, AND DESIGNS, INCLUDING THE OVERALL LAYOUT, FORM, AND COMPOSITION OF SPACES ARE PROTECTED BY COPYRIGHT REGISTERED TO CPG, INC. ANY REPRODUCTION, USE, OR DISCLOSURE OF THE INFORMATION CONTAINED HEREIN WITHOUT THE WRITTEN CONSENT FROM CPG, INC. DBA SUMMIT HOMES EXCEPT AS REQUIRED FOR BIDDING AND CONSTRUCTION OF THIS PROJECT IS STRICTLY PROHIBITED.

ADDRESS:

TWIN HONEYDEW
FARMHOUSE
OSAGE #25

PROFESSIONAL SEAL:



EVERSTEAD IS RESPONSIBLE FOR STRUCTURAL SPECIFICATIONS ONLY. ARCHITECTURAL PLANS WERE PRODUCED BY OTHERS.

EVERSTEAD
600 SW JEFFERSON SUITE 300
LEE'S SUMMIT, MO 64063
816-399-4901

DRAWN BY:
C.HOOPER

ISSUE DATE:
04.02.21

SHEET NUMBER:

A7.0