

MCC LONGVIEW COMMUNITY COLLEGE
Metropolitan Community College
500 SW Lonview Road
Lee's Summit, MO 64081
CONSTRUCTION DOCUMENTS

INDEX OF DRAWINGS

DESIGN TEAM

| | |
|-------------------------|---------------------------------------|
| GENERAL | |
| G000 | COVER SHEET |
| DEMOLITION - MECHANICAL | |
| MD200 | DEMOLITION SECOND FLOOR HVAC PLAN |
| ARCHITECTURE | |
| A101 | FLOOR PLAN - LEVEL 2 - OVERALL & ROOF |
| A101A | PARTIAL PLAN - LEVEL 2 |
| STRUCTURAL | |
| S001 | GENERAL NOTES & SPECIAL INSPECTIONS |
| S141 | ROOF FRAMING PLAN - OVERALL |
| MECHANICAL/ELECTRICAL | |
| ME100 | SYMBOLS LEGEND |
| ME201 | MEP ROOF PLAN |
| MECHANICAL | |
| M200 | SECOND FLOOR HVAC PLAN |
| M301 | MECHANICAL DETAILS & SCHEDULE |
| PLUMBING | |
| P100 | AREA PLAN |
| ELECTRICAL | |
| E200 | SECOND FLOOR POWER PLAN |
| E400 | ELECTRICAL DETAILS & SCHEDULES |

ARCHITECT:
Hollis + Miller Architects
1828 Walnut Street Ste 922
Kansas City, MO 64108
CONTACT: Ishita Banerjii
PHONE: 816.442.7700
FAX: 816.599.2545

STRUCTURAL ENGINEER:
Hollis + Miller Architects
1828 Walnut Street Ste 922
Kansas City, MO 64108
CONTACT: Hannah Jones
PHONE: 816.442.7700
FAX: 816.599.2545

MECH/ELECT ENGINEER:
RTM Engineering Consultants
9225 Indian Creek Pkwy
Suite 1075
Overland Park, KS 66210
CONTACT: Keith Hammerschmidt
PHONE: 913.322.1400
DIRECT: 913.303.0048

GENERAL CONTRACTOR:
Lippert Mechanical Service Corp.
1600 N. Topping Avenue
Kansas City Missouri 64120
CONTACT: Dennis Wilgers
PHONE: 816.241.4442
DIRECT: 816.985.6175

VICINITY MAP



we design the future*
1828 Walnut Street Suite 922
Kansas City, MO 64108
816.442.7700

115 Wilcox Street Suite 210
Castle Rock, CO 80104
720.949.1689

HOLLISANDMILLER.COM

Hollis + Miller Architects
Missouri State Certificate of Authority
Architecture # 0000161
Structure # 2006031333

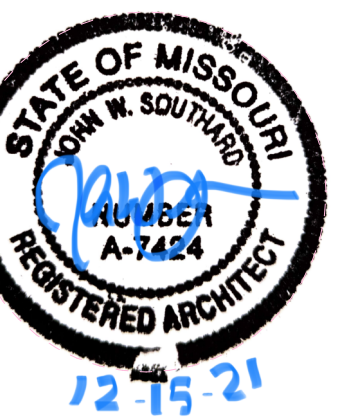
MEP ENGINEER
RTM Consulting Engineering
Missouri Certificate of
Authority #2014035826
9225 Indian Creek Pkwy, Suite 1075
Overland Park, KS 66210
913.322.1400 phone

MCC Longview Community College Lab Refresh

Metropolitan Community College

500 SW LongView Road,
Lee's Summit, MO 64081

Construction Documents



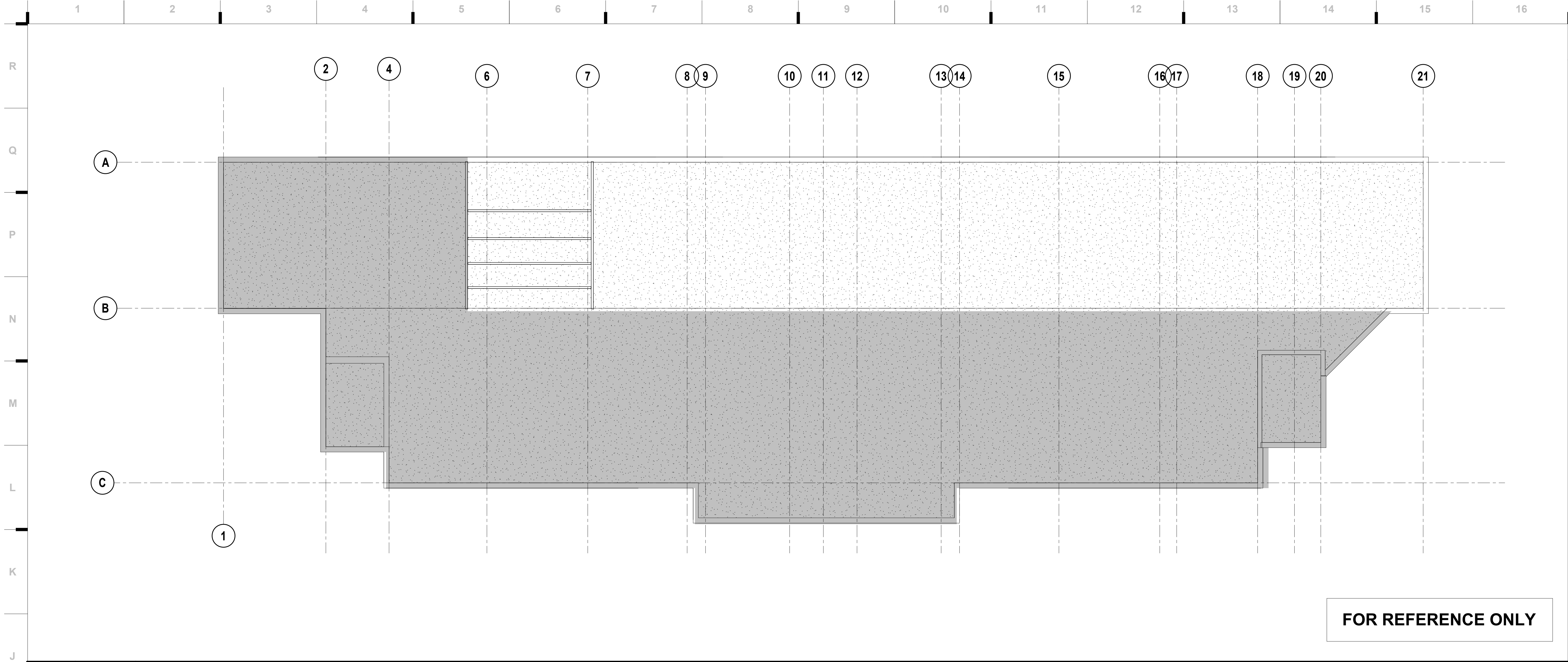
The Professional Architects seal affixed to this sheet applies only to the material and be-
drawings, instruments or other documents not exhibiting this seal shall not be considered
and this architect expressly disclaims any and all responsibility for such plan, drawings,
this seal.

JOB NO: 21004.00
DRAWN BY: IB
CHECKED BY: IB
DATE: 12/15/2021

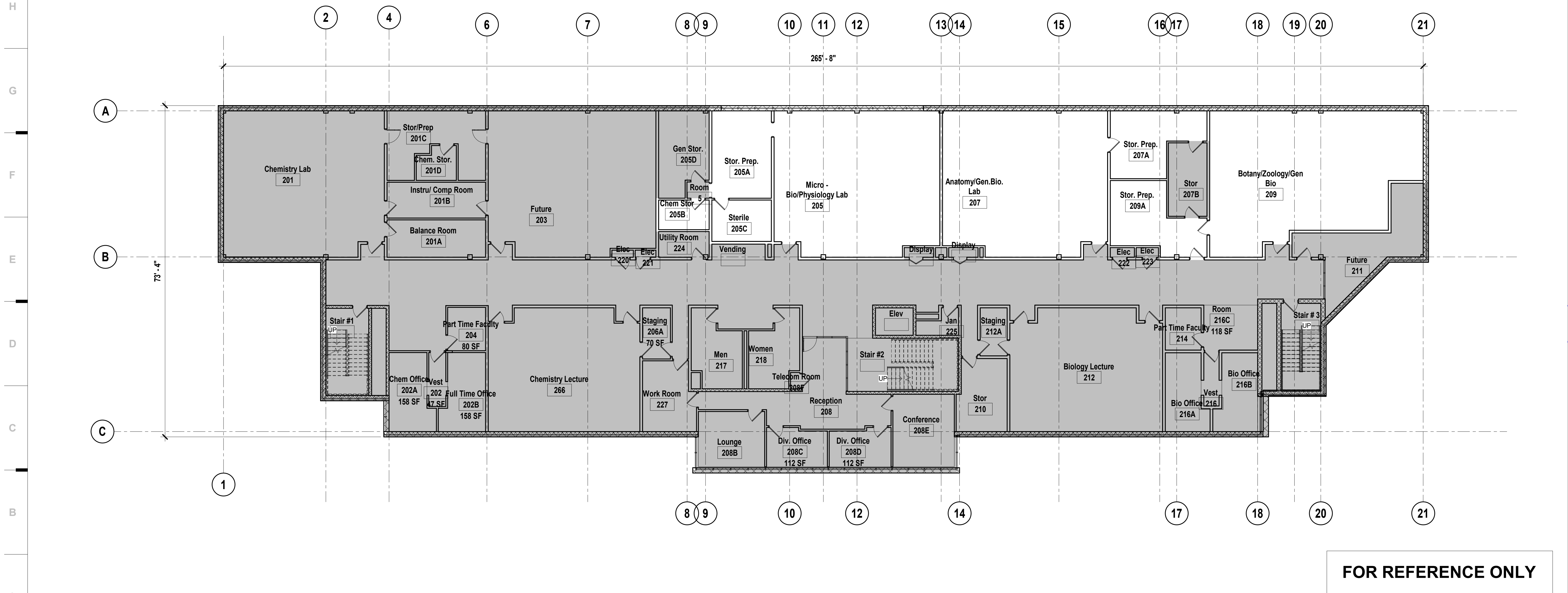
G000

COVER SHEET

12/20/2021 11:58:16 AM



J1 Scale 3/32" = 1'-0" Roof - Overall Existing Plan



A1 Scale 3/32" = 1'-0" Level 2 - Overall Existing Plan

SHEET NOTES

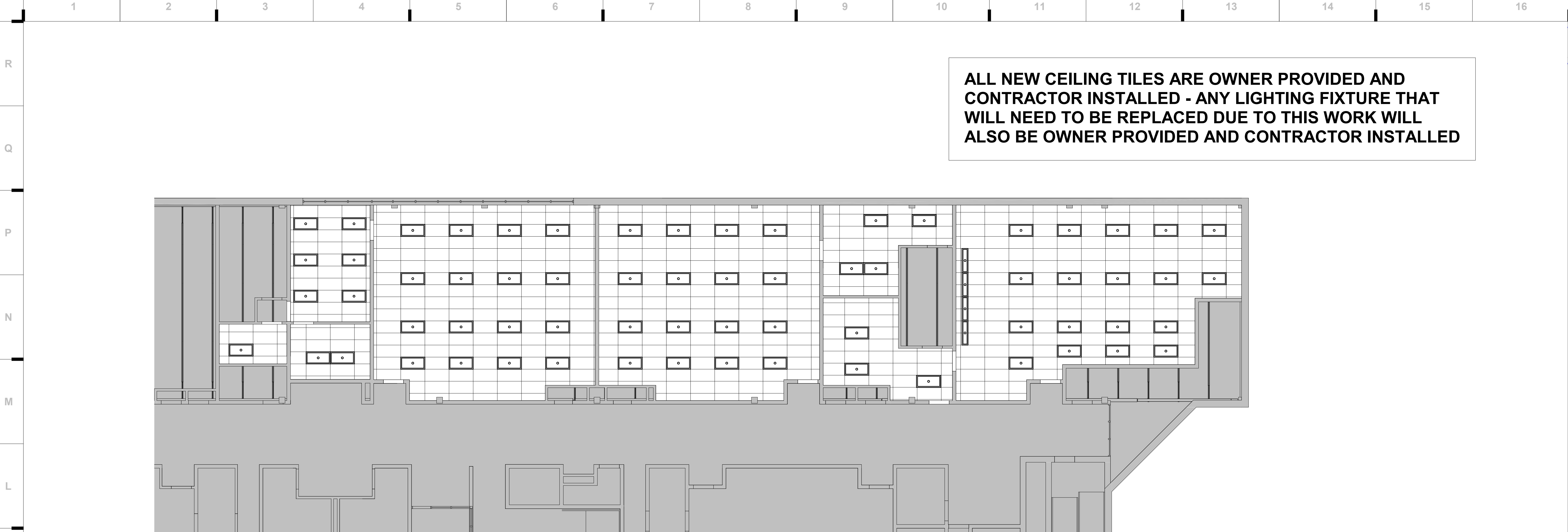
1. REFER TO SHEET G000 FOR SHEET INDEX
2. DO NOT SCALE THIS DRAWING
3. INTERIOR DIMENSIONS ARE TO THE FOLLOWING, UNLESS NOTED OTHERWISE:
 - A. TO FACE OF STUD
 - B. TO FACE OF MASONRY UNIT
 - C. TO FACE OF DOOR AND WINDOW ROUGH OPENINGS

| REVISIONS: | | |
|------------|-------------|------|
| # | Description | Date |

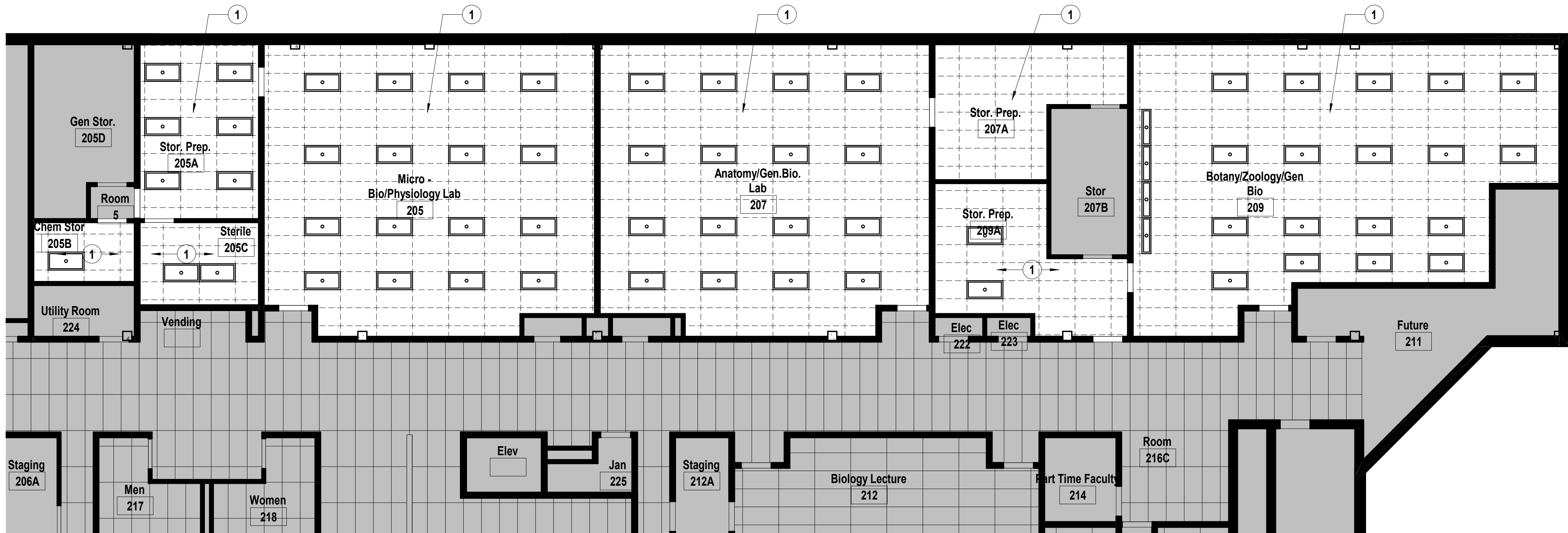


JOB NO: 21004.00
DRAWN BY: IB
CHECKED BY: IB
DATE: 12/15/2021

A101



K1 Scale Level 2 - Partial Ceiling Plan
1/8" = 1'-0"



A1 Scale Level 2 - Demolition Ceiling Plan
1/8" = 1'-0"

SHEET NOTES

1. REFER TO SHEET G000 FOR SHEET INDEX
2. DO NOT SCALE THIS DRAWING
3. INTERIOR DIMENSIONS ARE TO THE FOLLOWING, UNLESS NOTED OTHERWISE:
 - A. TO FACE OF STUD
 - B. TO FACE OF MASONRY UNIT
 - C. TO FACE OF DOOR AND WINDOW ROUGH OPENINGS

we design the future®
1828 Walnut Street Suite 922
Kansas City, MO 64108
t 816.442.7700
115 Wilcox Street Suite 210
Castle Rock, CO 80104
t 720.949.1689
HOLLISANDMILLER.COM

Holla + Miller Architects
Missouri State Certificate of Authority
Architecture # 00000101
Structure # 2006031333

MEP ENGINEER
RTM Consulting Engineering
Missouri Certificate of
Authority #2014035826
9225 Indian Creek Pkwy, Suite 1075
Overland Park, KS 66210
913.322.1400 phone

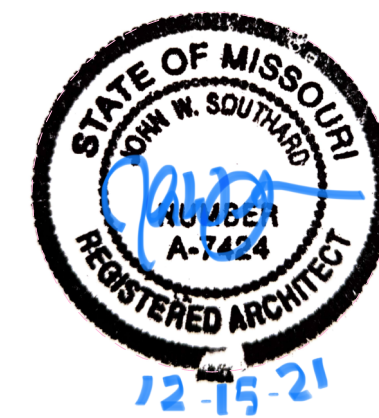
MCC Longview Community College Lab Refresh

Metropolitan Community College

500 SW Longview Road,
Lee's Summit, MO 64081

Construction
Documents

REVISIONS:
Description Date



DEMOLITION NOTES

CEILING

- ① REMOVE EXISTING LAY-IN ACOUSTICAL TILE AND SUSPENSION SYSTEM AS REQUIRED TO INSTALL NEW DUCTWORK. MAINTAIN ALL EXISTING HANGER WIRE, LIGHTING FIXTURES, AND OTHER ELECTRICAL FIXTURES / EQUIPMENT FOR NEW SUSPENSION SYSTEM.

JOB NO: 21004.00
DRAWN BY: IB
CHECKED BY: IB
DATE: 12/15/2021

A101A

PARTIAL PLAN - LEVEL 2