



November 11, 2021

ABI  
1271 NE Delta School Rd  
Lee's Summit, MO 64064

**RE: Subgrade Inspection for Lot # 17 Hook Farms – 2038 Hook Farms Dr  
Lee's Summit, MO 64082 – Permit # 2021-5420**

On November 10, 2021, a special inspection was performed by Everstead at the above referenced property. The purpose of this inspection was to determine structural adequacy of the existing soil for construction of concrete foundation.

**Findings:**

- The soils observed at footing elevation were silty clay; light-medium brown; high plasticity and moist.
- Probes and penetrometer readings indicated that the soils do not have sufficient bearing capacity for the loads applied by foundation per permit plans.

**Recommendations:**

- Everstead recommends that the footings be enlarged to 24"x8" with three (3) #4 rebar continuous (see attached specifications)
- Basement and garage pier pads shall be enlarged a minimum of 6" each way (i.e existing 30"x30" shall be enlarged to 36"x36", etc.) (see attached specifications)

We would like to thank you for the opportunity to consult you on your project. Please feel free to contact us if you have any questions regarding this report or need any further consultation.

Sincerely,

A handwritten signature in blue ink, appearing to read "Bradley Huxol".

Bradley Huxol, PE

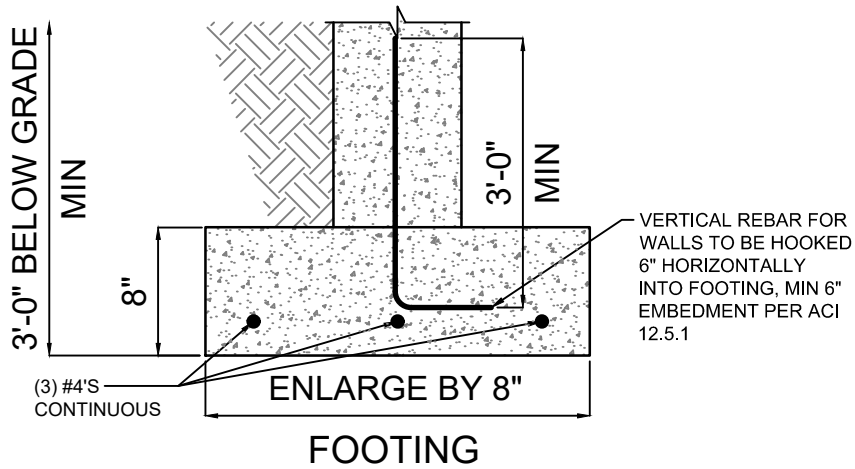
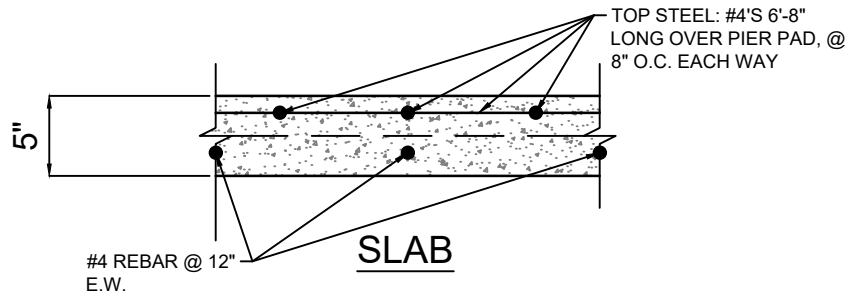


NOTE:

- MAXIMUM 9'-0" WALL HEIGHT
- USE REBAR AS SHOWN ON DRAWING OR XX LB/YD<sup>3</sup> HELIX 5-25 DESIGNED IN ACCORDANCE WITH UNIFORM-ES ER-0279

ALTERNATIVE PIER PAD SCHEDULE				
PAD SIZE	ADJUSTED PAD SIZE	REINFORCEMENT	SLAB TOP STEEL	HELIX DOSAGE
30"x30"x12"	36"x36"x12"	(6) #4 BAR E.W.	(4) #4 BAR E.W.	9 LB/CUBIC YARD
36"x36"x12"	42"x42"x14"	(7) #4 BAR E.W.	(5) #4 BAR E.W.	9 LB/CUBIC YARD
42"x42"x14"	48"x48"x16"	(8) #4 BAR E.W.	(6) #4 BAR E.W.	9 LB/CUBIC YARD
48"x48"x16"	54"x54"x16"	(9) #4 BAR E.W.	(6) #4 BAR E.W.	9 LB/CUBIC YARD
54"x54"x16"	60"x60"x16"	(10) #4 BAR E.W.	(7) #4 BAR E.W.	9 LB/CUBIC YARD

NOTE: PIER PAD SCHEDULE HAS BEEN INCREASED WITH THE USE OF THIS SPREAD FOOTING DETAIL. TABLE IS BASED ON RES SPECIFICATION REFERENCES AND MAY NOT DIRECTLY TRANSLATE TO PLANS ENGINEERED BY OTHER FIRMS. REFER TO SITE SPECIFIC DESIGN FOR PIER PAD SIZES.



**ALTERNATIVE HELIX OPTION:**

- SLAB HELIX DOSAGE = 9 LB/YD<sup>3</sup>
- FOOTING HELIX DOSAGE = 9 LB/YD<sup>3</sup>
- PIER PAD HELIX DOSAGE = 9 LB/YD<sup>3</sup>
- HORIZONTAL REBAR IS NOT REQUIRED IN FOOTINGS FOR HELIX
- SLAB ONLY REQUIRES TOP STEEL REBAR OVER PIER PADS FOR HELIX
- VERTICAL REBAR IN WALL IS STILL REQUIRED. HOOK REBAR 6" HORIZONTALLY INTO FOOTING @ 24" O.C.

SH 1	REVISION		
	0	TYPE	JT
-	-	-	-
-	-	-	-
-	-	-	-
-	-	-	-
-	-	-	-
-	-	-	-

SPREAD FOOTING  
DETAIL  
N.T.S.

EVERSTEAD  
600 SW JEFFERSON ST  
SUITE 300  
LEE'S SUMMIT, MO 64063  
816-399-4901  
WWW.EVERSTEAD.COM

