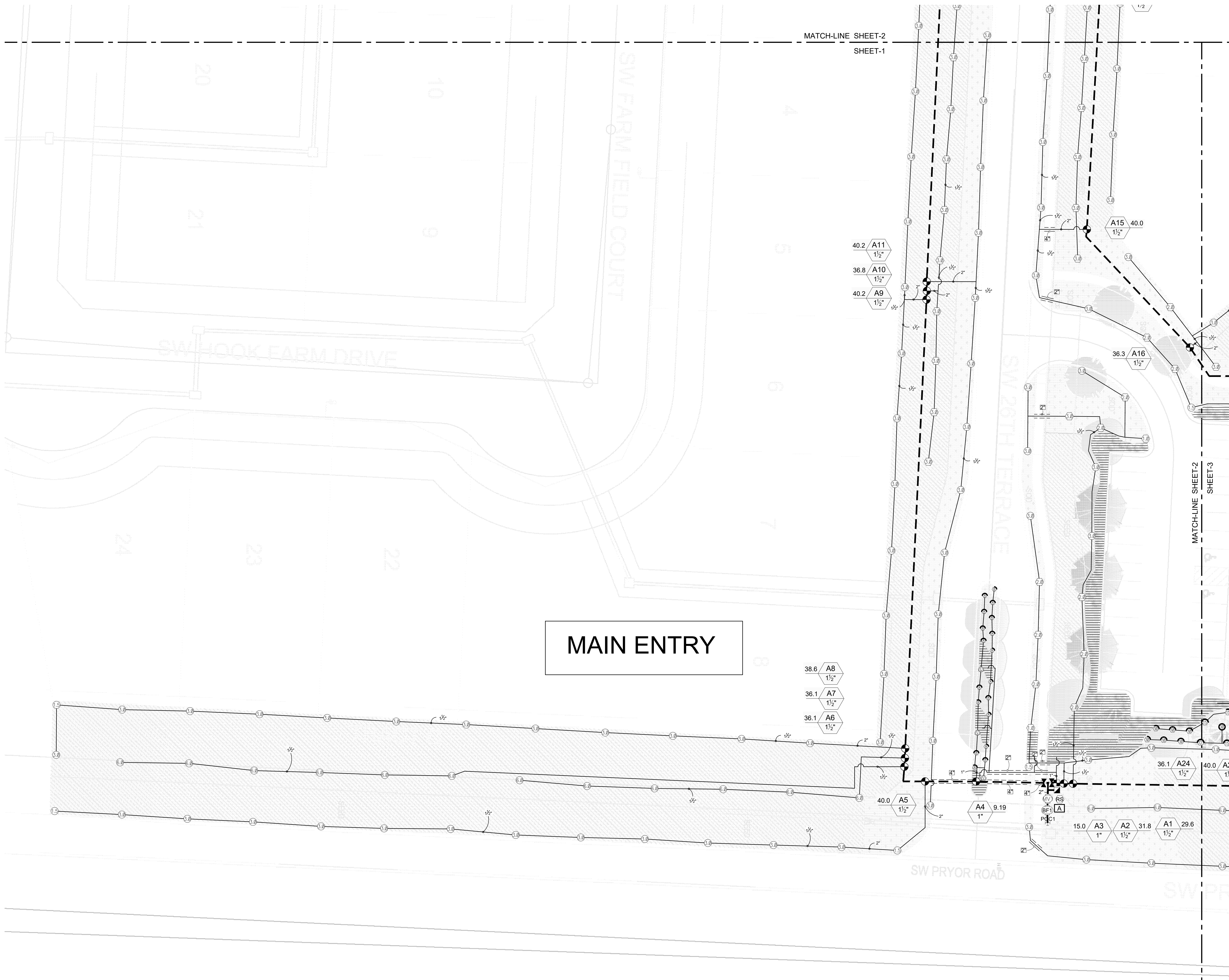


SCALE: 1" = 20' - 0"
 0' 10' 20' 40'



5102 N Garfield Ave
 Loveland, CO 80538
 Phone 970.667.6605
 Fax 970.667.3525
<http://projectservices.siteone.com>
 800.347.4272

Project Name:
HOOK FARM MAIN ENTRY / POOL
 Lees Summit, MO, 64063

Customer Name:

Design Date: 06/21/21

Drawn By: Ryan Blumenshine

REVISIONS

Description	Date
△	11/03/21
△	
△	
△	
△	

Drawing Title:

Irrigation Plan

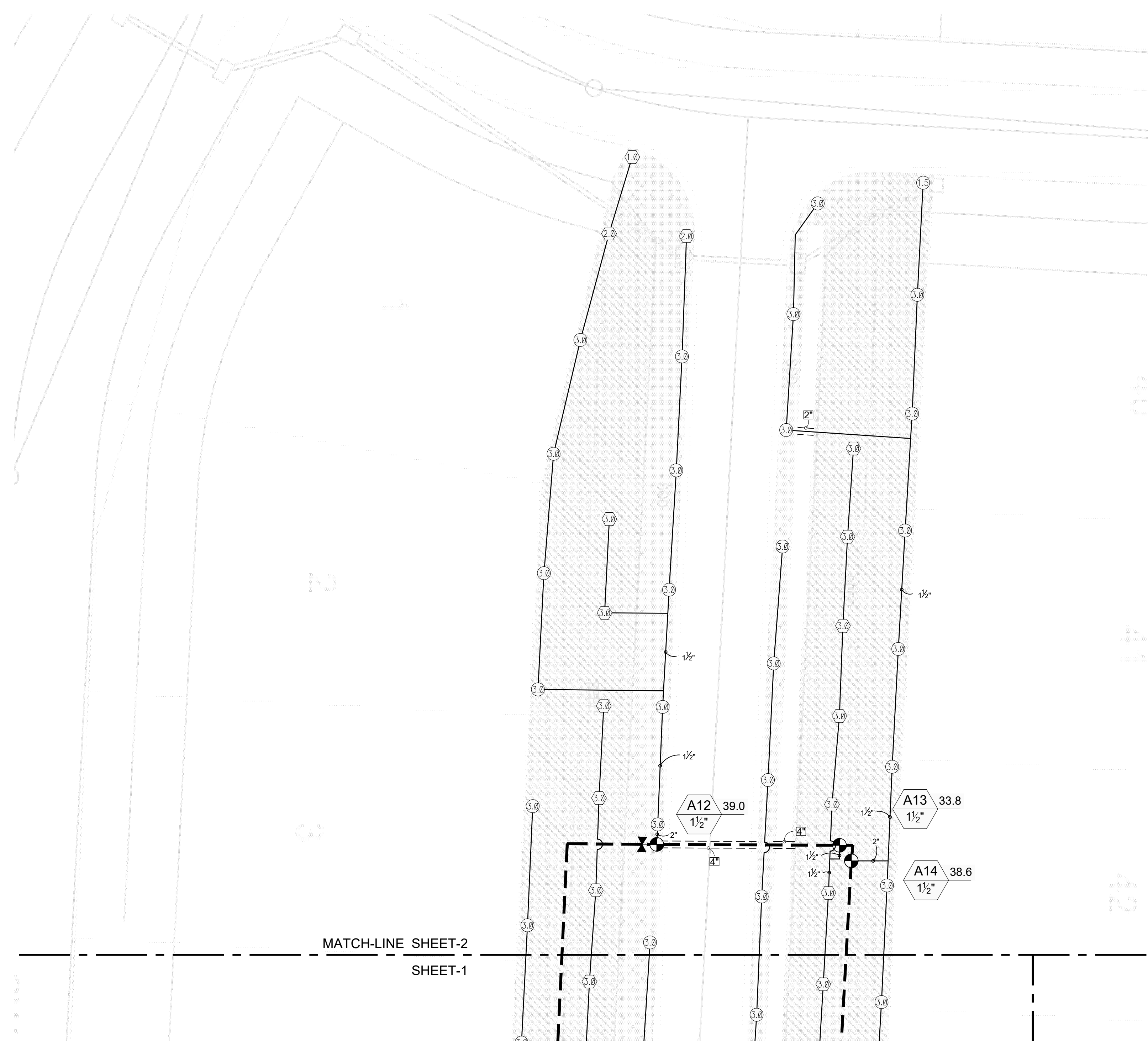
Drawing Scale: 1" = 20'

PS Project Number: 256903

Sheet Number:

IR-1

SCALE: 1" = 20' - 0"



IRRIGATION SCHEDULE

SYMBOL	MANUFACTURER/MODEL	QTY
	RAIN BIRD 1804 15 STRIP SERIES	6
	RAIN BIRD 1804 8 SERIES MPR	35
	RAIN BIRD 1804 10 SERIES MPR	9
	RAIN BIRD 1804 12 SERIES MPR	6
	RAIN BIRD 1804 15 SERIES MPR	3
	RAIN BIRD 5004-PC, FC	15
	RAIN BIRD 5004-PC, FC	129
	RAIN BIRD 5004-PC, FC	25
	RAIN BIRD 5004-PC, FC-LA	6
	RAIN BIRD 5004-PC, FC-LA	19
	RAIN BIRD 5004-PC, FC-LA	30
	RAIN BIRD XCZ-100-PRF 1"	3
	AREA TO RECEIVE DRIPLINE RAIN BIRD XFCV-06-12(18)	3,555 L.F.
	RAIN BIRD PGA GLOBE 1"	1
	RAIN BIRD PGA GLOBE 1-1/2"	20
	RAIN BIRD 5-RC 1"	1
	ISOLATION GATE VALVE	3
	RAIN BIRD PEB 1-1/2" MASTER VALVE	1
	FEBCO 860 1-1/2"	1
	RAIN BIRD ESP-LXME CONTROLLER	1
	RAIN BIRD WR2-RFC	1
	POINT OF CONNECTION 1 1/2"	1
	IRRIGATION LATERAL LINE: PVC CLASS 200 SDR 21 1"	5,759 L.F.
	IRRIGATION LATERAL LINE: PVC CLASS 200 SDR 21 1 1/2"	2,251 L.F.
	IRRIGATION LATERAL LINE: PVC CLASS 200 SDR 21 2"	286.4 L.F.
	IRRIGATION MAINLINE: PVC CLASS 200 SDR 21 2"	1,392 L.F.
	PIPE SLEEVE: PVC SCHEDULE 40 2"	91.8 L.F.
	PIPE SLEEVE: PVC SCHEDULE 40 4"	92.0 L.F.

IRRIGATION NOTES

- IRRIGATION SYSTEM DESIGN BASED ON 40 GPM AT 70 PSI.
- IRRIGATION DESIGN IS FROM THE POINT OF CONNECTION (POC) ONLY. THE DESIGN IS BASED ON GALLONS PER MINUTE (GPM) AND POUNDS PER SQUARE INCH (PSI) FURNISHED BY OTHERS.
- IRRIGATION CONTRACTOR IS TO VERIFY POINT OF CONNECTION IN THE FIELD. INSTALLER IS TO CONFIRM THE MINIMUM DISCHARGE REQUIREMENTS OF THE POINT OF CONNECTION AS INDICATED ON THE LEGEND PRIOR TO INSTALLATION.
- THE PRESSURE REQUIREMENT AT THE POINT OF CONNECTION IS BASED ON NO MORE THAN 5-FEET OF ELEVATION CHANGE IN THE AREAS OF IRRIGATION.
- ALL PRODUCTS SHALL BE INSTALLED IN ACCORDANCE WITH THE MANUFACTURER'S RECOMMENDATIONS AND ACCORDING TO LOCAL BUILDING, ELECTRICAL AND PLUMBING CODES.
- IRRIGATION CONTRACTOR WILL ARRANGE INSPECTIONS REQUIRED BY LOCAL AGENCIES AND ORDINANCES DURING THE COURSE OF CONSTRUCTION AS REQUIRED. ALL WIRING TO BE PER LOCAL CODE. BACKFLOW PREVENTION PER LOCAL CODE.
- LOCATION OF IRRIGATION COMPONENTS SHOWN ON DRAWINGS IS APPROXIMATE. ACTUAL PLACEMENT MAY VARY SLIGHTLY AS REQUIRED TO ACHIEVE FULL, EVEN COVERAGE.
- ALL SPRINKLER HEADS SHALL BE INSTALLED PERPENDICULAR TO FINISH GRADES, EXCEPT AS OTHERWISE INDICATED.
- INSTALL IRRIGATION MAINS WITH A MINIMUM 18" OF COVER BASED ON FINISH GRADES. INSTALL IRRIGATION LATERALS WITH A MINIMUM 12" OF COVER BASED ON FINISH GRADES.
- PIPE LOCATIONS ARE DIAGRAMMATIC. VALVES AND MAINLINE SHOWN IN PAVED AREAS ARE FOR GRAPHIC CLARITY ONLY.
- THE IRRIGATION CONTRACTOR SHALL COMPLY WITH PIPE SIZES AS INDICATED.
- THE FOLLOWING SHOULD BE NOTED REGARDING TO PIPE SIZING: IF A SECTION OF UN-SIZED LATERAL PIPE IS LOCATED BETWEEN TWO IDENTICALLY SIZED SECTIONS THE UN-SIZED SECTION SHALL BE OF THE SAME SIZE. IF A SECTION OF UN-SIZED LATERAL PIPE IS NOT SIZED AT THE END OF A ZONE AND IS NOT BETWEEN TWO IDENTICALLY SIZED SECTIONS THE UN-SIZED SECTION(S) SHALL BE 1-INCH.
- ALL WIRE SPLICES OR CONNECTIONS SHALL BE MADE WITH APPROVED WATERPROOF WIRE CONNECTORS AND BE IN A VALVE OR SPLICE BOX.
- ALL CONTROL WIRING DOWNSTREAM OF THE CONTROLLER IS TO BE 14 AWG, UL APPROVED DIRECT BURY.
- THE DESIGN IS BASED ON THE SITE INFORMATION AND/OR DRAWING SUPPLIED WITH THE DESIGN CRITERIA BEING SET (AREA TO BE IRRIGATED, EQUIPMENT MANUFACTURER AND MODEL TO BE USED, WATER SOURCE INFORMATION, ELECTRICAL POWER AVAILABILITY, ETC.). SITEONE LANDSCAPE SUPPLY BEARS NO RESPONSIBILITY OR LIABILITY FOR ANY ERRORS IN DESIGN OR INSTALLATION THAT ARISE DUE TO INACCURACIES IN THE ABOVE REFERENCED INFORMATION SUPPLIED TO SITEONE LANDSCAPE SUPPLY IN RELATION TO THIS PROJECT, UNLESS OTHERWISE NOTED.

CRITICAL ANALYSIS

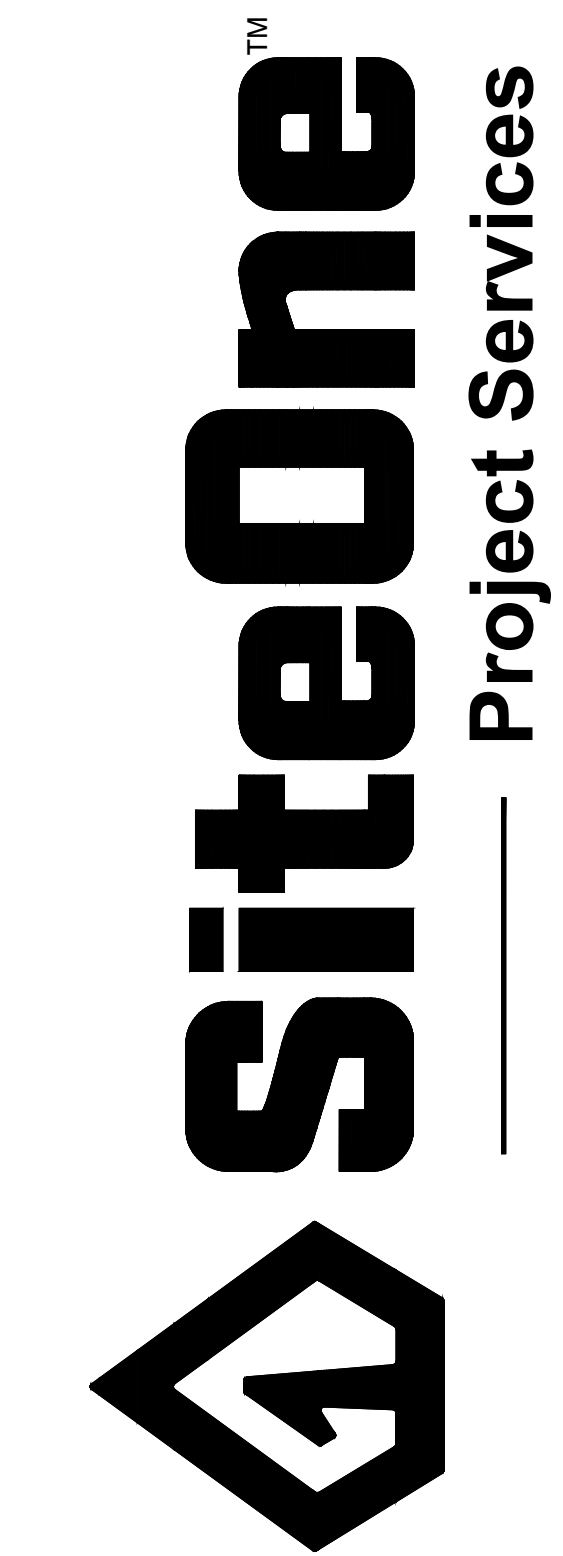
P.O.C. NUMBER: 01
Water Source Information:

FLOW AVAILABLE	
Custom Max Flow:	40.00 gpm
Flow Available:	40.00 gpm

PRESSURE AVAILABLE	
Static Pressure at POC:	70.00 PSI
Pressure Available:	70.00 psi

DESIGN ANALYSIS	
Maximum Station Flow:	40.17 gpm
Flow Available at POC:	40.00 gpm
Residual Flow Available:	-0.17 gpm

Critical Station:	
Design Pressure:	45.00 psi
Friction Loss:	7.77 psi
Fittings Loss:	0.78 psi
Elevation Loss:	0.00 psi
Loss through Valve:	2.69 psi
Pressure Req. at Critical Station:	56.24 psi
Loss for Fittings:	0.07 psi
Loss for Main Line:	0.73 psi
Loss for POC to Valve Elevation:	0.00 psi
Loss for Backflow:	12.00 psi
Loss for Master Valve:	3.54 psi
Critical Station Pressure at POC:	72.58 psi
Pressure Available:	70.00 psi
Residual Pressure Available:	-2.58 psi



5102 N Garfield Ave
Loveland, CO 80538
Phone: 970.667.6605
Fax: 970.667.3525
<http://projectservices.siteone.com>
800.347.4272

Project Name:
HOOK FARM MAIN ENTRY / POOL
Lees Summit, MO, 64063

Customer Name:

Design Date: 06/21/21
Drawn By: Ryan Blumenshine

REVISIONS

Description	Date
	11/03/21

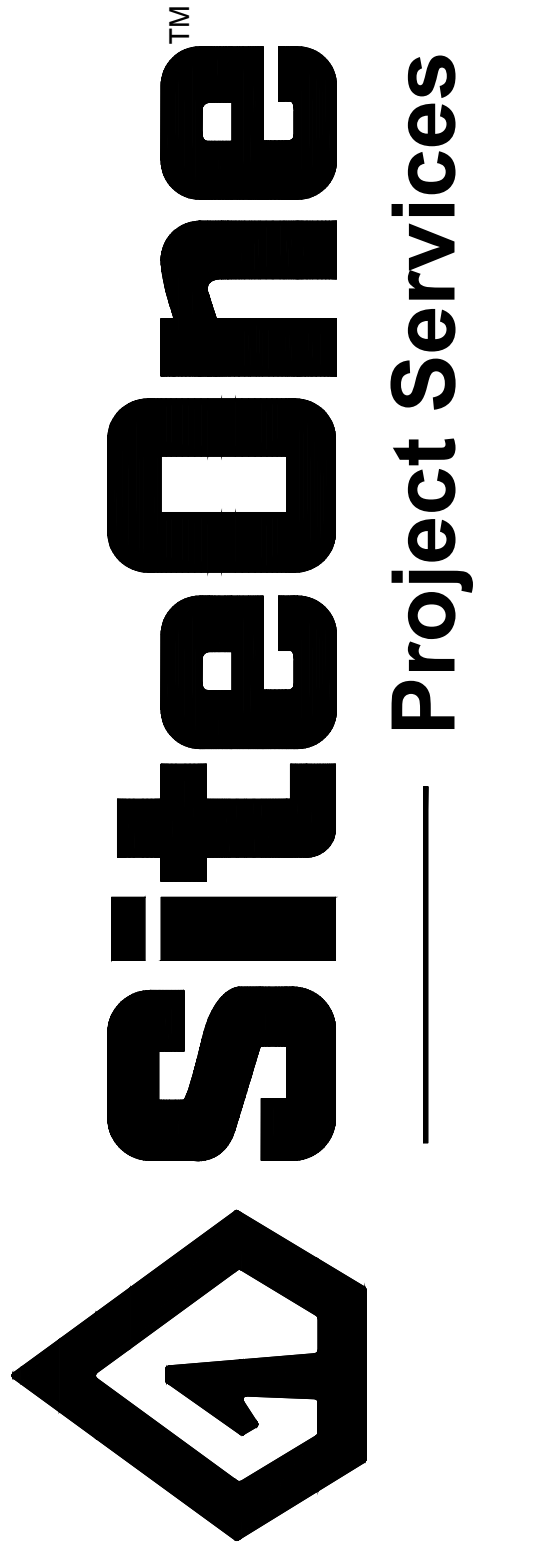
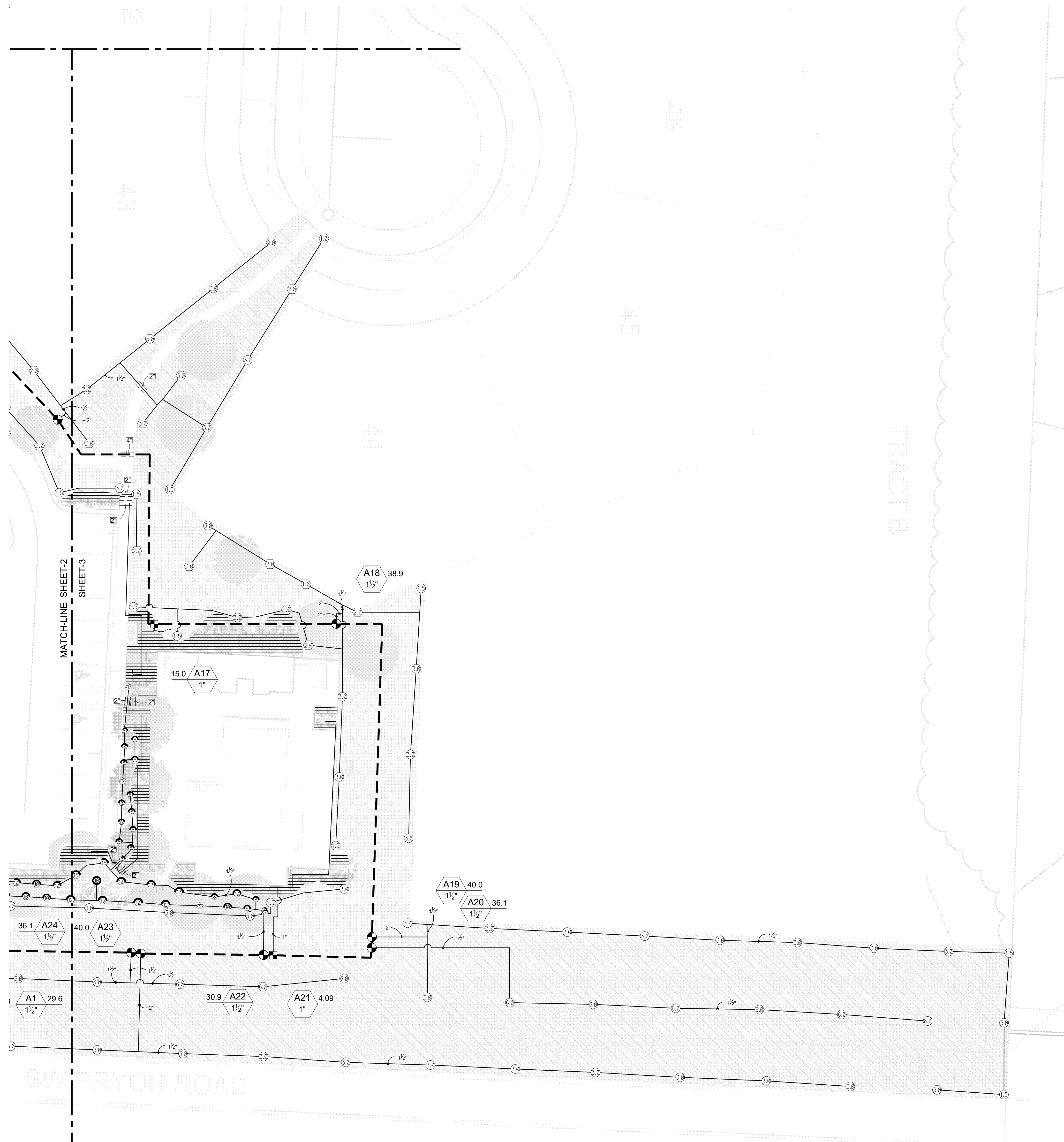
Drawing Title:
Irrigation Plan

Drawing Scale: 1" = 20'

PS Project Number: 256903

Sheet Number:
IR-2

SCALE: 1" = 20' - 0"
 0' 10' 20' 40'



5102 N Garfield Ave
 Loveland, CO 80538
 Phone 970.667.6605
 Fax 970.667.3525
<http://projectservices.siteone.com>
 800.347.4272

Project Name:
HOOK FARM MAIN ENTRY / POOL
 Lees Summit, MO, 64063

Customer Name:

Design Date: 06/21/21
 Drawn By: Ryan Blumenshine

REVISIONS

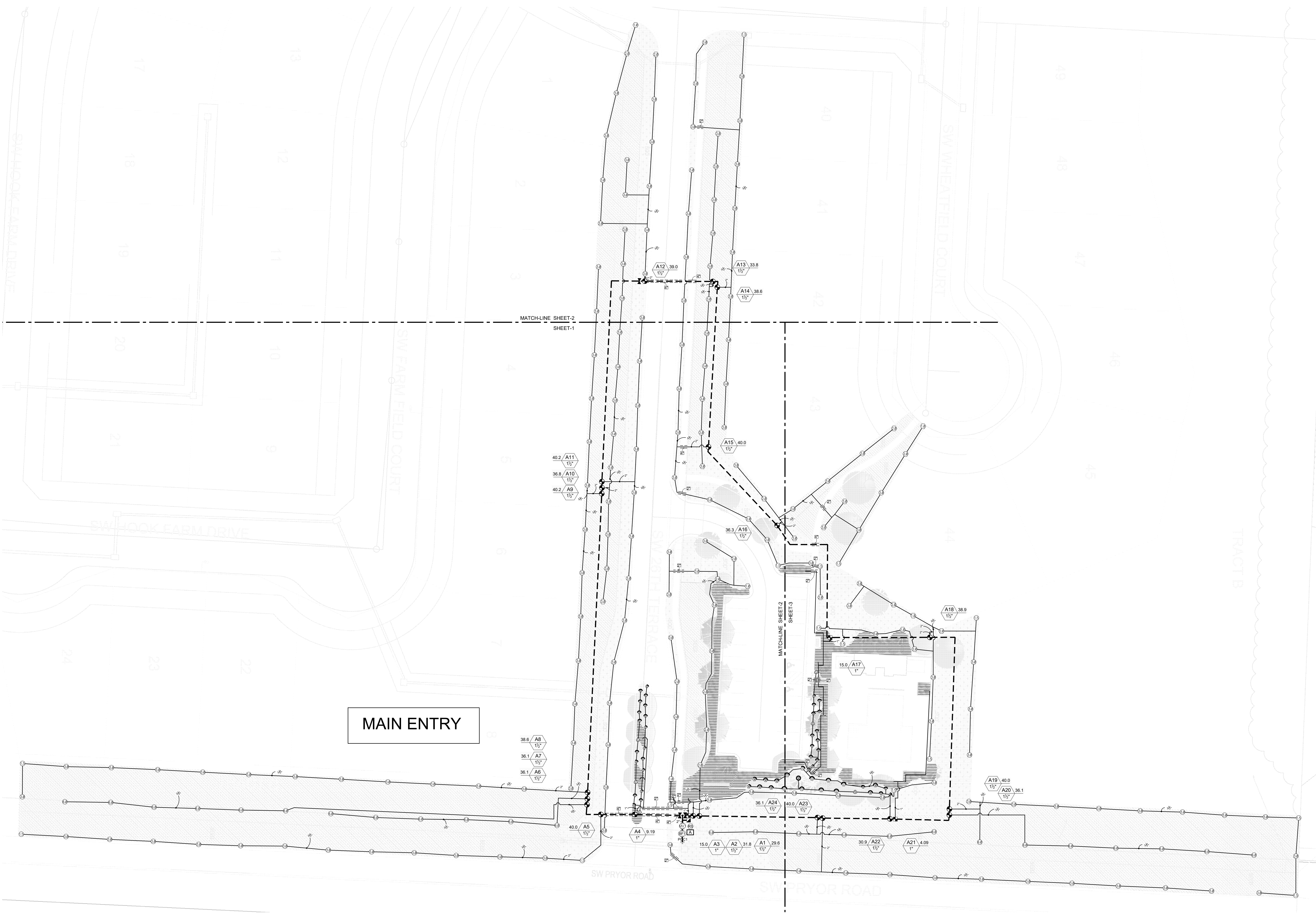
Description	Date
△	11/03/21
△	
△	
△	
△	

Drawing Title:
 Irrigation Plan

Drawing Scale: 1" = 20'

PS Project Number: 256903

Sheet Number:
 IR-3



5102 N Garfield Ave
 Loveland, CO 80538
 Phone 970.667.6605
 Fax 970.667.3525
<http://projectservices.siteone.com>
 800.347.4272

Project Name:
HOOK FARM MAIN ENTRY / POOL
 Lees Summit, MO, 64063

Customer Name:

Design Date: 06/21/21

Drawn By: Ryan Blumenshine

REVISIONS

Description	Date
△	11/03/21
△	
△	
△	
△	

Drawing Title:
Overall Main Entry Irrigation Plan

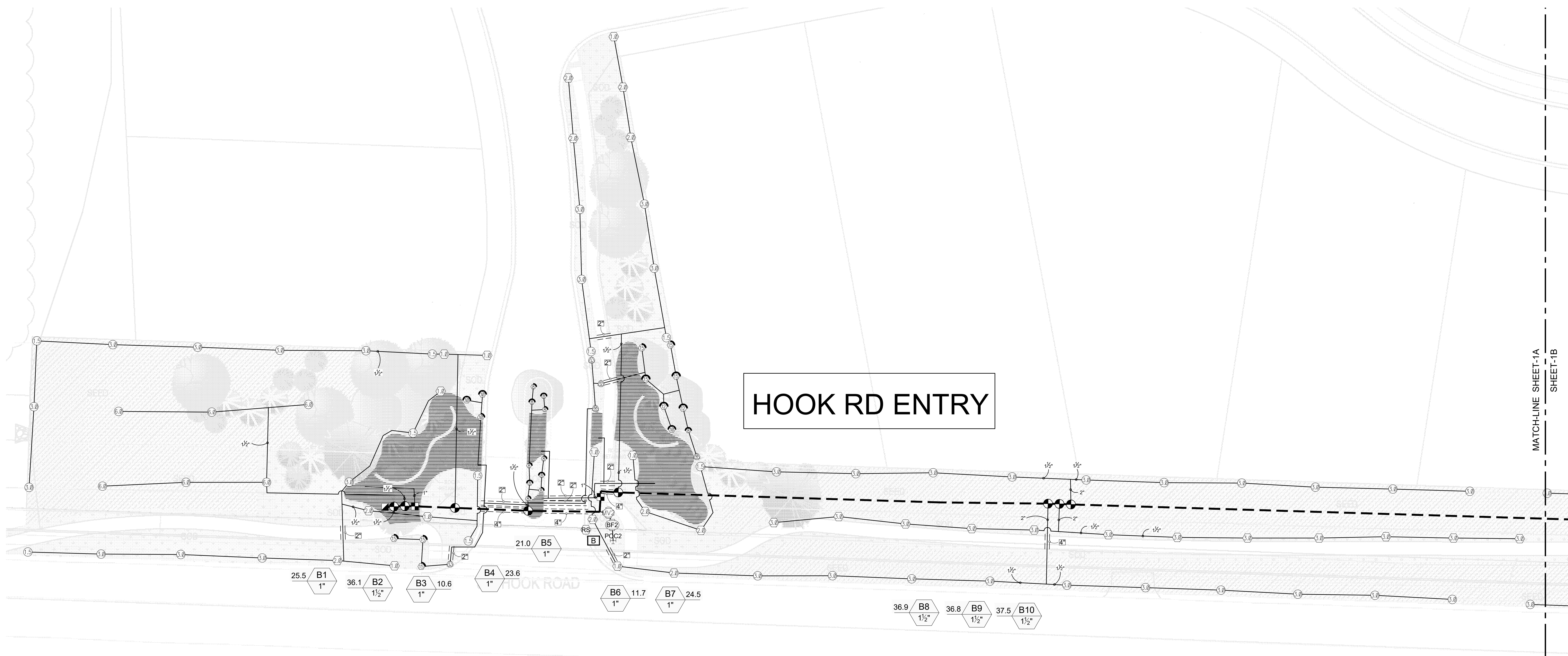
Drawing Scale: NTS

PS Project Number: 256903

Sheet Number:

IR-4

SCALE: 1" = 20' - 0"

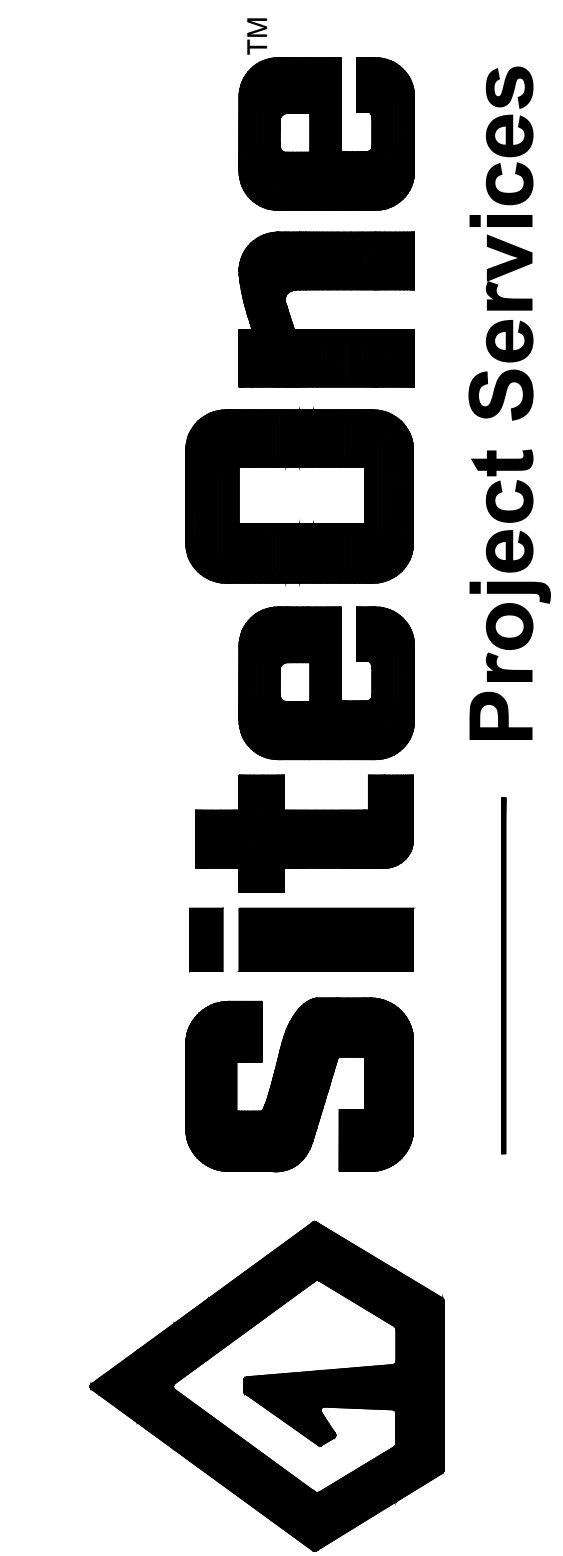


HOOK RD ENTRY

MATCHLINE SHEET-1A
SHEET-1B



MATCHLINE SHEET-1A
SHEET-1B



5102 N Garfield Ave
Loveland, CO 80538
Phone: 970.667.6605
Fax: 970.667.3525
<http://projectservices.siteone.com>
800.347.4272

Project Name:
HOOK FARM MAIN ENTRY / POOL
Lees Summit, MO, 64063

Customer Name:

Design Date: 06/21/21
Drawn By: Ryan Blumenshine

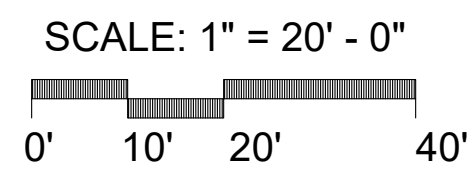
REVISIONS	
Description	Date
△	11/03/21
△	
△	
△	
△	

Drawing Title:
Irrigation Plan

Drawing Scale: 1" = 20'

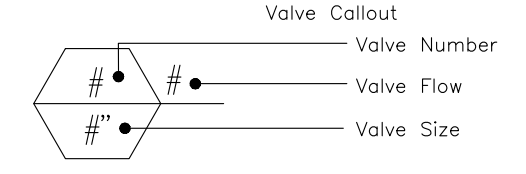
PS Project Number: 256903

Sheet Number:
IR-4



IRRIGATION SCHEDULE

SYMBOL	MANUFACTURER/MODEL	QTY
	RAIN BIRD 1804 15 STRIP SERIES	5
	RAIN BIRD 1804 8 SERIES MPR	11
	RAIN BIRD 1804 10 SERIES MPR	4
	RAIN BIRD 1804 12 SERIES MPR	2
	RAIN BIRD 1804 15 SERIES MPR	7
SYMBOL	MANUFACTURER/MODEL	QTY
	RAIN BIRD 5004-PC, FC	15
	RAIN BIRD 5004-PC, FC	107
	RAIN BIRD 5004-PC, FC	35
	RAIN BIRD 5004-PC, FC-LA	11
	RAIN BIRD 5004-PC, FC-LA	10
	RAIN BIRD 5004-PC, FC-LA	25
SYMBOL	MANUFACTURER/MODEL	QTY
	RAIN BIRD XCZ-100-PRF 1"	2
	AREA TO RECEIVE DRIPLINE RAIN BIRD XFCV-06-12(18)	2,224 L.F.
SYMBOL	MANUFACTURER/MODEL	QTY
	RAIN BIRD PGA GLOBE 1"	4
	RAIN BIRD PGA GLOBE 1-1/2"	12
	RAIN BIRD 5-RC 1"	2
	RAIN BIRD PEB MASTER VALVE 1-1/2"	1
	FEBCO 860 1-1/2"	1
	RAIN BIRD ESP-4ME	1
	RAIN BIRD WR2-RFC	1
	POINT OF CONNECTION 1 1/2"	1
	IRRIGATION LATERAL LINE: PVC CLASS 200 SDR 21 1"	4,849 L.F.
	IRRIGATION LATERAL LINE: PVC CLASS 200 SDR 21 1 1/2"	950.6 L.F.
	IRRIGATION LATERAL LINE: PVC CLASS 200 SDR 21 2"	177.6 L.F.
	IRRIGATION MAINLINE: PVC CLASS 200 SDR 21 2"	1,048 L.F.
	PIPE SLEEVE: PVC SCHEDULE 40 2"	127.9 L.F.
	PIPE SLEEVE: PVC SCHEDULE 40 4"	83.0 L.F.



IRRIGATION NOTES

- IRRIGATION SYSTEM DESIGN BASED ON 40 GPM AT 78 PSI.
- IRRIGATION DESIGN IS FROM THE POINT OF CONNECTION (POC) ONLY. THE DESIGN IS BASED ON GALLONS PER MINUTE (GPM) AND POUNDS PER SQUARE INCH (PSI) FURNISHED BY OTHERS.
- IRRIGATION CONTRACTOR IS TO VERIFY POINT OF CONNECTION IN THE FIELD. INSTALLER IS TO CONFIRM THE MINIMUM DISCHARGE REQUIREMENTS OF THE POINT OF CONNECTION AS INDICATED ON THE LEGEND PRIOR TO INSTALLATION.
- THE PRESSURE REQUIREMENT AT THE POINT OF CONNECTION IS BASED ON NO MORE THAN 5-FEET OF ELEVATION CHANGE IN THE AREAS OF IRRIGATION.
- ALL PRODUCTS SHALL BE INSTALLED IN ACCORDANCE WITH THE MANUFACTURER'S RECOMMENDATIONS AND ACCORDING TO LOCAL BUILDING, ELECTRICAL AND PLUMBING CODES.
- IRRIGATION CONTRACTOR WILL ARRANGE INSPECTIONS REQUIRED BY LOCAL AGENCIES AND ORDINANCES DURING THE COURSE OF CONSTRUCTION AS REQUIRED. ALL WIRING TO BE PER LOCAL CODE. BACKFLOW PREVENTION PER LOCAL CODE.
- LOCATION OF IRRIGATION COMPONENTS SHOWN ON DRAWINGS IS APPROXIMATE. ACTUAL PLACEMENT MAY VARY SLIGHTLY AS REQUIRED TO ACHIEVE FULL, EVEN COVERAGE.
- ALL SPRINKLER HEADS SHALL BE INSTALLED PERPENDICULAR TO FINISH GRADES, EXCEPT AS OTHERWISE INDICATED.
- INSTALL IRRIGATION MAINS WITH A MINIMUM 18" OF COVER BASED ON FINISH GRADES. INSTALL IRRIGATION LATERALS WITH A MINIMUM 12" OF COVER BASED ON FINISH GRADES.
- PIPE LOCATIONS ARE DIAGRAMATIC. VALVES AND MAINLINE SHOWN IN PAVED AREAS ARE FOR GRAPHIC CLARITY ONLY.
- THE IRRIGATION CONTRACTOR SHALL COMPLY WITH PIPE SIZES AS INDICATED.
- THE FOLLOWING SHOULD BE NOTED REGARDING TO PIPE SIZING: IF A SECTION OF UN-SIZED LATERAL PIPE IS LOCATED BETWEEN TWO IDENTICALLY SIZED SECTIONS THE UN-SIZED SECTION SHALL BE OF THE SAME SIZE. IF A SECTION OF UN-SIZED LATERAL PIPE IS NOT SIZED AT THE END OF A ZONE AND IS NOT BETWEEN TWO IDENTICALLY SIZED SECTIONS THE UN-SIZED SECTION(S) SHALL BE 1-INCH.
- ALL WIRE SPLICES OR CONNECTIONS SHALL BE MADE WITH APPROVED WATERPROOF WIRE CONNECTORS AND BE IN A VALVE OR SPLICE BOX.
- ALL CONTROL WIRING DOWNSTREAM OF THE CONTROLLER IS TO BE 14 AWG, UL APPROVED DIRECT BURY.
- THE DESIGN IS BASED ON THE SITE INFORMATION AND/OR DRAWING SUPPLIED WITH THE DESIGN CRITERIA BEING SET (AREA TO BE IRRIGATED, EQUIPMENT MANUFACTURER AND MODEL TO BE USED, WATER SOURCE INFORMATION, ELECTRICAL POWER AVAILABILITY, ETC.). SITEONE LANDSCAPE SUPPLY BEARS NO RESPONSIBILITY OR LIABILITY FOR ANY ERRORS IN DESIGN OR INSTALLATION THAT ARISE DUE TO INACCURACIES IN THE ABOVE REFERENCED INFORMATION SUPPLIED TO SITEONE LANDSCAPE SUPPLY IN RELATION TO THIS PROJECT, UNLESS OTHERWISE NOTED.

CRITICAL ANALYSIS

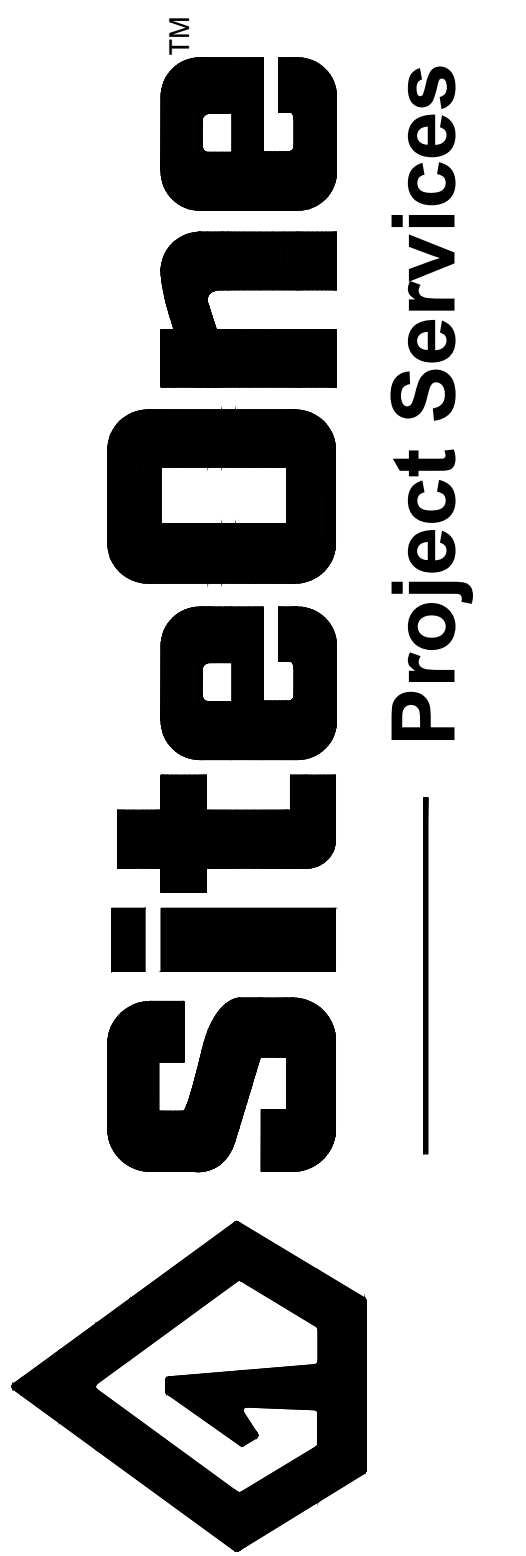
P.O.C. NUMBER: 02
Water Source Information:

FLOW AVAILABLE
Custom Max Flow: 40.00 gpm
Flow Available: 40.00 gpm

PRESSURE AVAILABLE
Static Pressure at POC: 70.00 PSI
Pressure Available: 70.00 psi

DESIGN ANALYSIS
Maximum Station Flow: 40.17 gpm
Flow Available at POC: 40.00 gpm
Residual Flow Available: -0.17 gpm

Pressure Req. at Critical Station: 52.47 psi
Loss for Fittings: 0.84 psi
Loss for Main Line: 8.38 psi
Loss for POC to Valve Elevation: 0.00 psi
Loss for Backflow: 12.00 psi
Loss for Master Valve: 3.51 psi
Critical Station Pressure at POC: 77.20 psi
Pressure Available: 70.00 psi
Residual Pressure Available: -7.20 psi



5102 N Garfield Ave
Loveland, CO 80538
Phone 970.667.6605
Fax 970.667.3525
<http://projectservices.siteone.com>
800.347.4272

Project Name:
HOOK FARM MAIN ENTRY / POOL
Lees Summit, MO, 64063

Customer Name:

Design Date: 06/21/21
Drawn By: Ryan Blumenshine

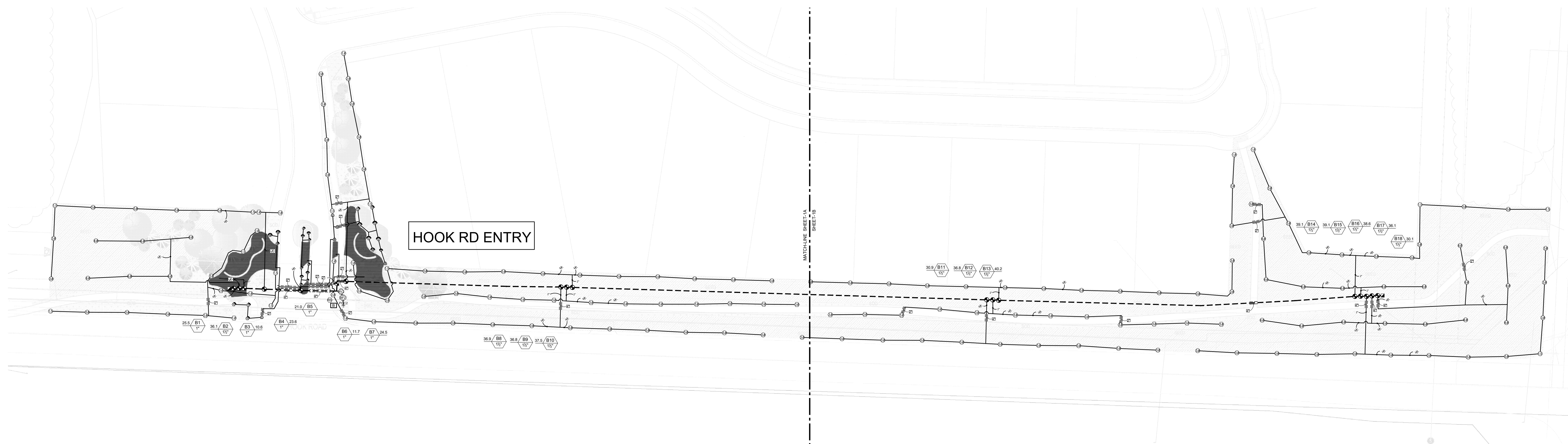
REVISIONS	
Description	Date
	11/03/21

Drawing Title:
Legend & Notes

Drawing Scale: 1" = 20'

PS Project Number: 256903

Sheet Number:
IR-5



5102 N Garfield Ave
 Loveland, CO 80538
 Phone 970.667.6605
 Fax 970.667.3525
<http://projectservices.siteone.com>
 800.347.4272

Project Name:
HOOK FARM MAIN ENTRY / POOL
 Lees Summit, MO, 64063

Customer Name:

Design Date: 06/21/21
 Drawn By: Ryan Blumenshine

REVISIONS

Description	Date
△	11/03/21
△	
△	
△	
△	
△	

Drawing Title:
 Overall Hook Rd Entry Irr Plan

Drawing Scale: NTS

PS Project Number: 256903

Sheet Number:

IR-7