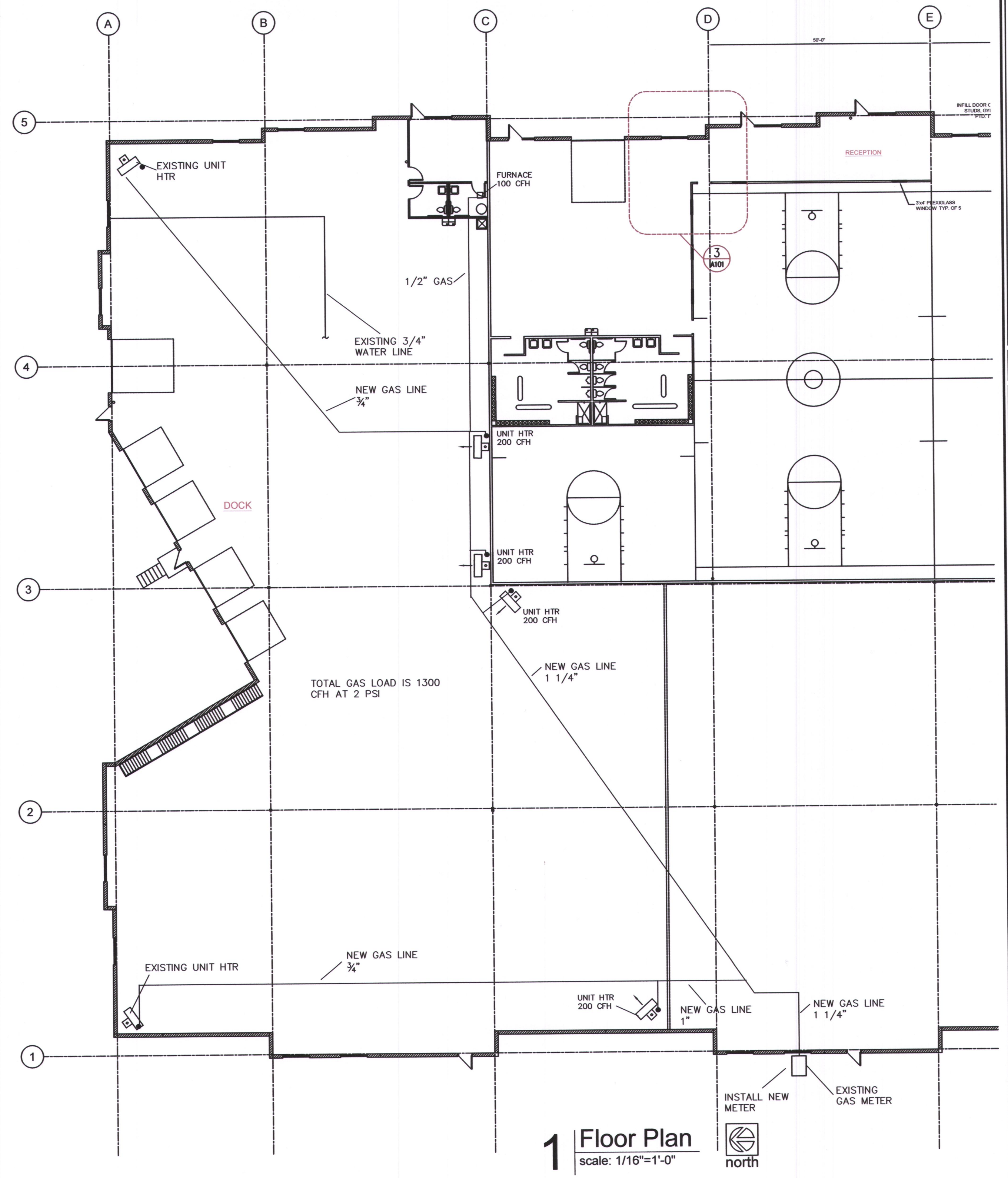


2 Enlarged Floor Plan
scale: 1/2"=1'-0"
north



RELEASED FOR CONSTRUCTION
Noted on Plans Review
Development Services Department
Lee's Summit, Missouri
11/29/2021

TENANT INFILL FOR

JOHNSON LOGISTICS LLC

AT
2736 NE McBAINE DRIVE
LEE'S SUMMIT MISSOURI

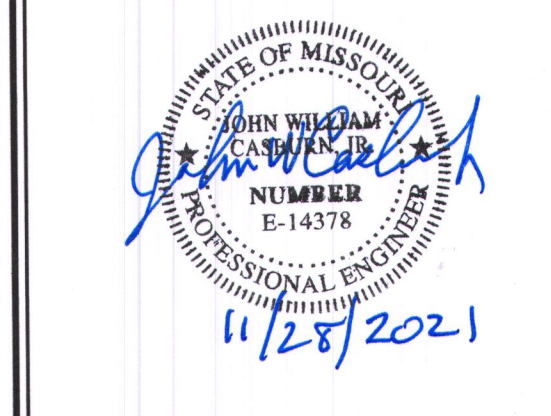
DATE: 9/21/2020

REVISIONS:
 ▲ REV GAS LINE
 ▲
 ▲
 ▲
 ▲



ARCHITECTURAL SERVICES
Robert J. Shirk Jr. - Principal / Project Mgr.

3009 ELMIRA CT.
INDEPENDENCE,
MISSOURI 64057
(816) 797-7115



SHEET NO.
P101