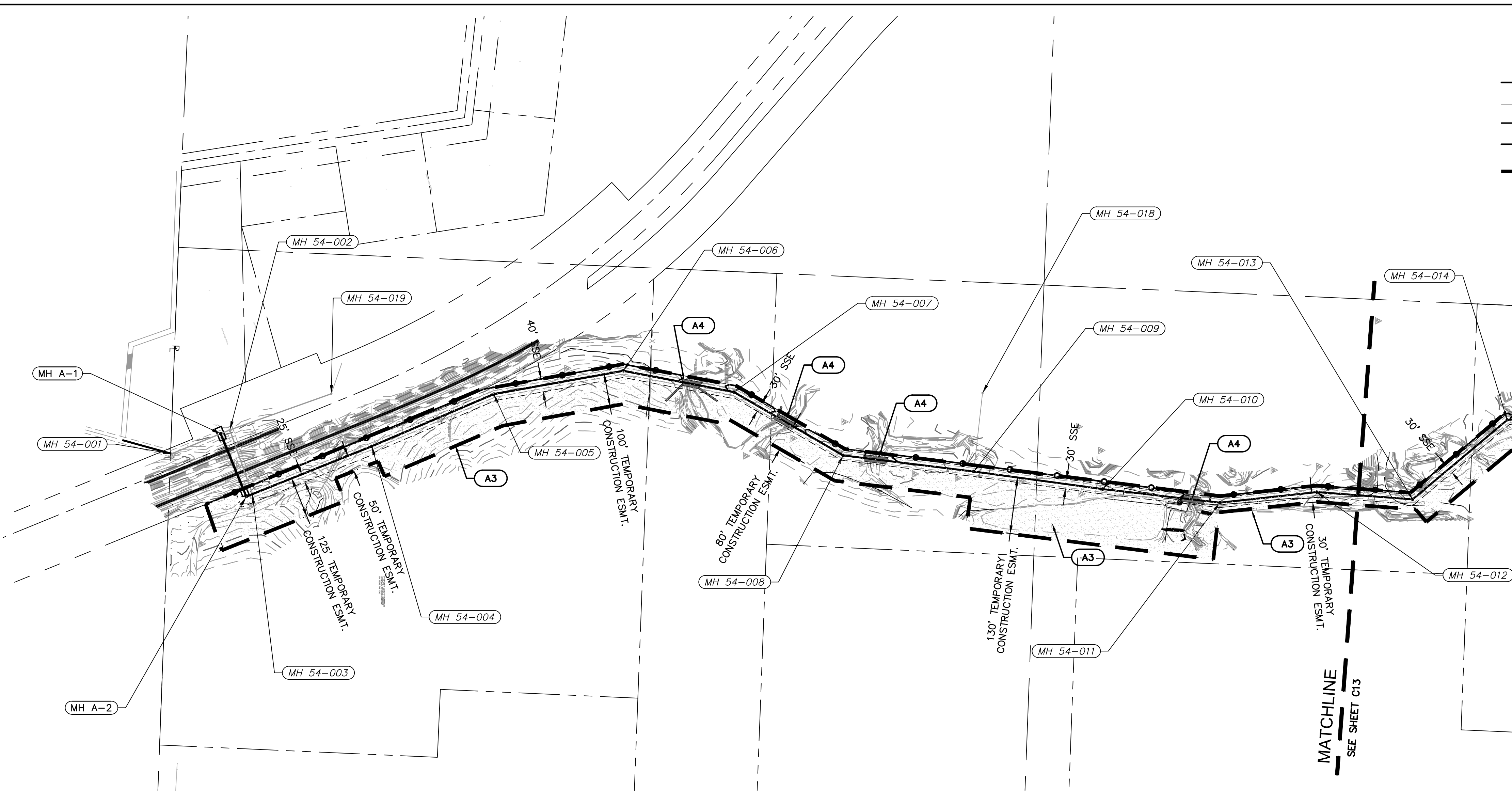


DWG: \\oa.ad.oaconsulting.com\ite-nst\projects-direct\2020\0001-0500\020-0103\40-Design\AutoCAD\Final Plans\Sheets\W\WW\_P\_ERO\_0200103.dwg  
 DATE: Oct 14, 2021 7:54am  
 USER: bhudlemeyer  
 P\_PPLBK\_0200103 V\_XREFS\_2\_00103 V\_XTDFP\_2\_00103 V\_XBOU\_2\_00103

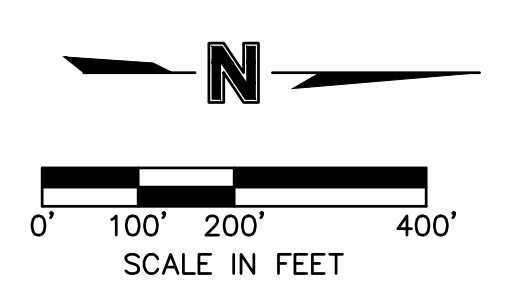


**LEGEND**

- PROPERTY LINE
- - - 830 - - - EXISTING CONTOUR
- 830 — PROPOSED CONTOUR
- ○ ○ ○ ○ SEDIMENT FENCE
- - - - - LIMITS OF DISTURBANCE
- (X1) — EROSION CONTROL REFERENCE NUMBER
- [Hatched Box] REPLACE TOP SOIL, SEED MULCH, SOD, LANDSCAPE

EROSION CONTROL STAGING CHART				
PROJECT STAGE	EROSION CONTROL BMP REFERENCE NO.	BMP DESCRIPTION	REMOVE AFTER STAGE	NOTES:
A - PRE-CONSTRUCTION	A1	TEMPORARY CONSTRUCTION ENTRANCE	B	CONTRACTOR TO COORDINATE LOCATION AS NECESSARY
	A2	CONCRETE WASHOUT	B	CONTRACTOR TO COORDINATE LOCATION AS NECESSARY
	A3	SILT FENCE	B	INSTALL AS INDICATED ON PLANS
	A4	REINFORCED STREAM CROSSING	N/A	INSTALL AS INDICATED ON PLANS
B - FINAL STABILIZATION	B1	REPLACE TOP SOIL, SEED MULCH	N/A	ESTABLISH PERENNIAL VEGETATION WITH A 70% DENSITY OVER 100% OF DISTURBED AREA.

RELEASED FOR CONSTRUCTION  
 As Noted on Plans Review  
 Development Services Department  
 Lee's Summit, Missouri  
 11/16/2021



FOR MDNR APPROVAL

Olsson - Civil Engineering  
 Missouri Certificate of Authority # 001592  
 1301 Burlington Street  
 North Kansas City, MO 64116  
 TEL 816.361.1177 www.olson.com

REV. NO.	DATE	REVISIONS DESCRIPTION	BY
1	8-25-2021	ASI #29 - REVISED PER CITY COMMENTS	
2	10-14-2021	REVISED FOR MDNR SUBMITTAL	

EROSION CONTROL PLAN

**BIG CREEK INTERCEPTOR SEWER UPZIZING  
 LEE'S SUMMIT MIDDLE SCHOOL #4**

LEE'S SUMMIT, MO

2021

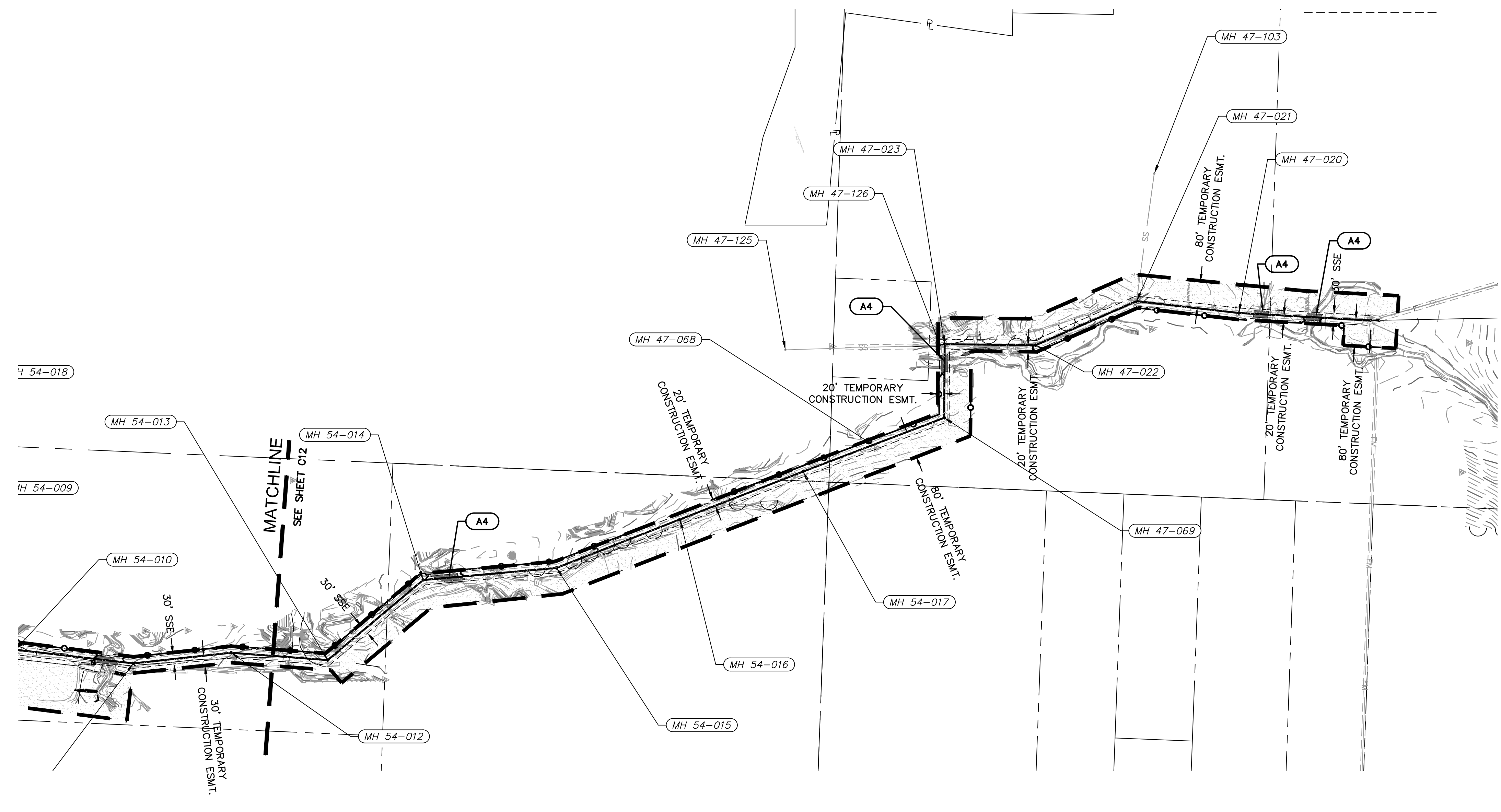
REVISIONS

drawn by:	NG
checked by:	BH
approved by:	BH
QA/QC by:	JS
project no.:	020-01030
drawing no.:	
date:	07.15.2021

SHEET  
C12



DWG: \\ca.ad.oaconsulting.com\ite-nst\projects-direct\2020\0001-0500\020-0103\40-Design\AutoCAD\Final Plans\Sheets\WMM\W\_P\_ERO\_0200103.dwg  
 DATE: Oct 14, 2021 7:54am  
 USER: bhudlemeyer  
 XREFS: P\_PTLBK\_0200103\_P\_PBASE\_0200103\_V\_XTDF0-2\_00103\_V\_XBOU-2\_00103

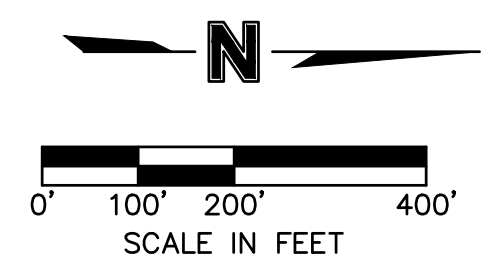


**LEGEND**

- PROPERTY LINE
- 830 EXISTING CONTOUR
- 830 PROPOSED CONTOUR
- SEDIMENT FENCE
- LIMITS OF DISTURBANCE
- EROSION CONTROL REFERENCE NUMBER
- REPLACE TOP SOIL, SEED MULCH, SOD, LANDSCAPE

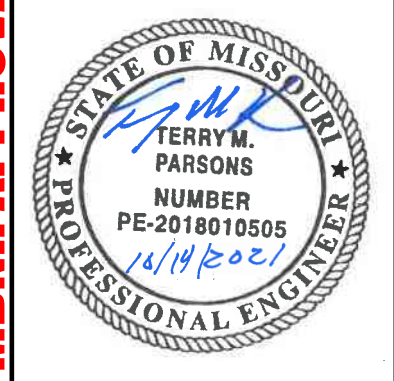
EROSION CONTROL STAGING CHART				
PROJECT STAGE	EROSION CONTROL BMP REFERENCE NO.	BMP DESCRIPTION	REMOVE AFTER STAGE	NOTES:
A - PRE-CONSTRUCTION	A1	TEMPORARY CONSTRUCTION ENTRANCE	B	CONTRACTOR TO COORDINATE LOCATION AS NECESSARY
	A2	CONCRETE WASHOUT	B	CONTRACTOR TO COORDINATE LOCATION AS NECESSARY
	A3	SILT FENCE	B	INSTALL AS INDICATED ON PLANS
	A4	REINFORCED STREAM CROSSING	N/A	INSTALL AS INDICATED ON PLANS
B - FINAL STABILIZATION	B1	REPLACE TOP SOIL, SEED MULCH	N/A	ESTABLISH PERENNIAL VEGETATION WITH A 70% DENSITY OVER 100% OF DISTURBED AREA.

**RELEASED FOR CONSTRUCTION**  
 As Noted on Plans Review  
 Development Services Department  
 Lee's Summit, Missouri  
 11/16/2021



**FOR MDNR APPROVAL**

**olsson**  
 Olsson - Civil Engineering  
 Missouri Certificate of Authority # 001592  
 1301 Burlington Street  
 North Kansas City, MO 64116  
 TEL 816.361.1177  
 www.olson.com



REV. NO.	DATE	REVISIONS DESCRIPTION	BY
1	8-25-2021	ASI #29 - REVISED PER CITY COMMENTS	
2	10-14-2021	REVISED FOR MDNR SUBMITTAL	

EROSION CONTROL PLAN

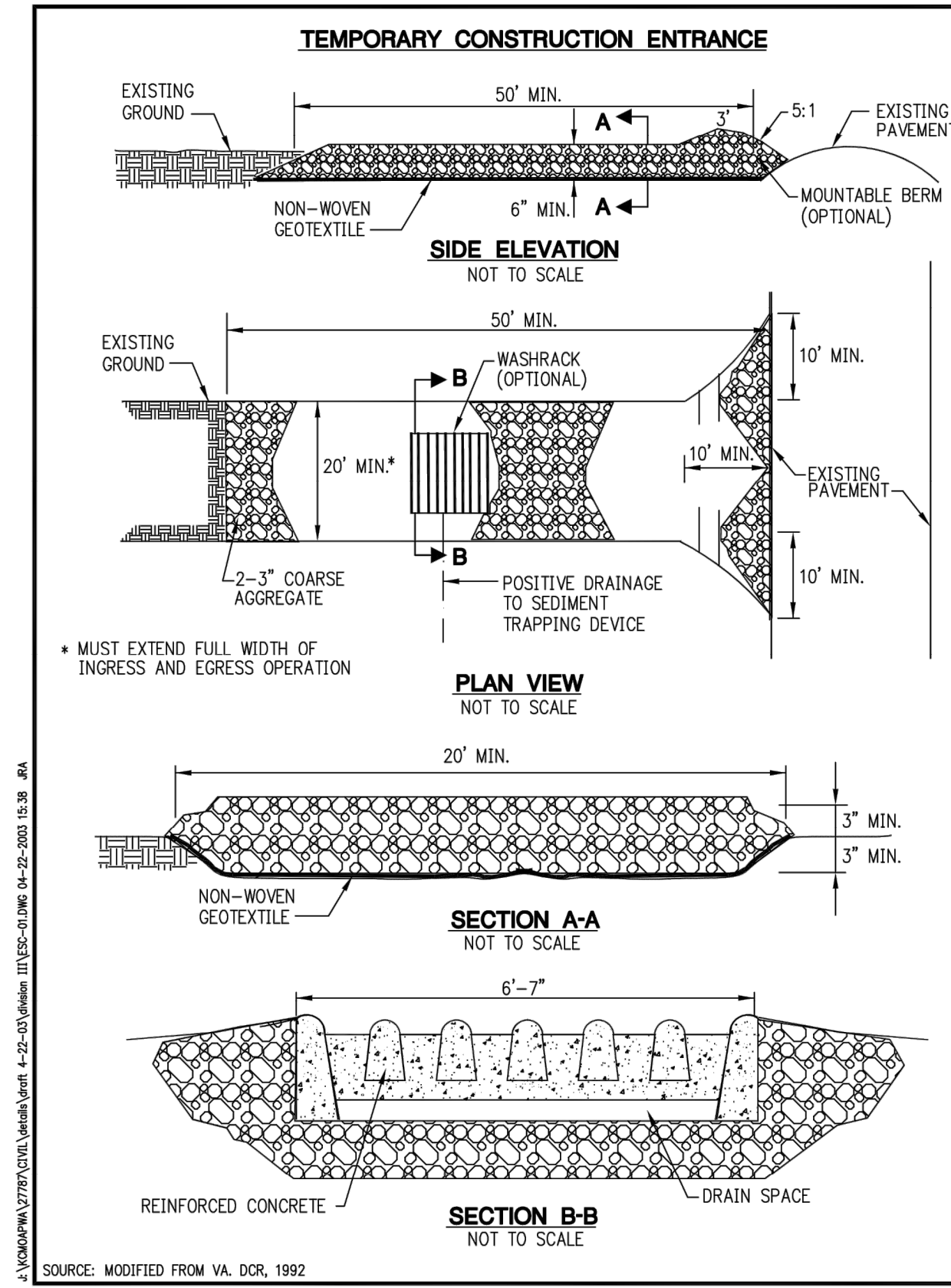
**BIG CREEK INTERCEPTOR SEWER UPSIZING  
 LEE'S SUMMIT MIDDLE SCHOOL #4**

LEE'S SUMMIT, MO 2021

drawn by: NG  
 checked by: BH  
 approved by: BH  
 QA/QC by: JS  
 project no.: 020-01030  
 drawing no.:  
 date: 07.15.2021

**SHEET  
 C13**





**TEMPORARY CONSTRUCTION ENTRANCE PAD NOTES:**

**A) INSTALLATION:**

1. AVOID LOCATING ON STEEP SLOPES OR AT CURVES ON PUBLIC ROADS. IF POSSIBLE, LOCATE WHERE PERMANENT ROADS WILL EVENTUALLY BE CONSTRUCTED.
2. REMOVE ALL VEGETATION AND OTHER UNSUITABLE MATERIAL FROM THE FOUNDATION AREA, GRADE, AND CROWN FOR POSITIVE DRAINAGE.
3. IF SLOPE TOWARDS THE PUBLIC ROAD EXCEEDS 2%, CONSTRUCT A 6-TO 8-INCH HIGH RIDGE WITH 3:4-1V SIDE SLOPES ACROSS THE FOUNDATION APPROXIMATELY 15 FEET FROM THE EDGE OF THE PUBLIC ROAD TO DIVERT RUNOFF AWAY FROM IT.
4. INSTALL PIPE UNDER THE ENTRANCE IF NEEDED TO MAINTAIN DRAINAGE DITCHES ALONG PUBLIC ROADS.
5. PLACE STONE TO DIMENSIONS AND GRADE AS SHOWN ON PLANS. LEAVE SURFACE SMOOTH AND SLOPED FOR DRAINAGE.
6. DIVERT ALL SURFACE RUNOFF AND DRAINAGE FROM THE ENTRANCE TO A SEDIMENT CONTROL DEVICE.
7. IF WET CONDITIONS ARE ANTICIPATED, PLACE GEOTEXTILE FABRIC ON THE GRADED FOUNDATION TO IMPROVE STABILITY.

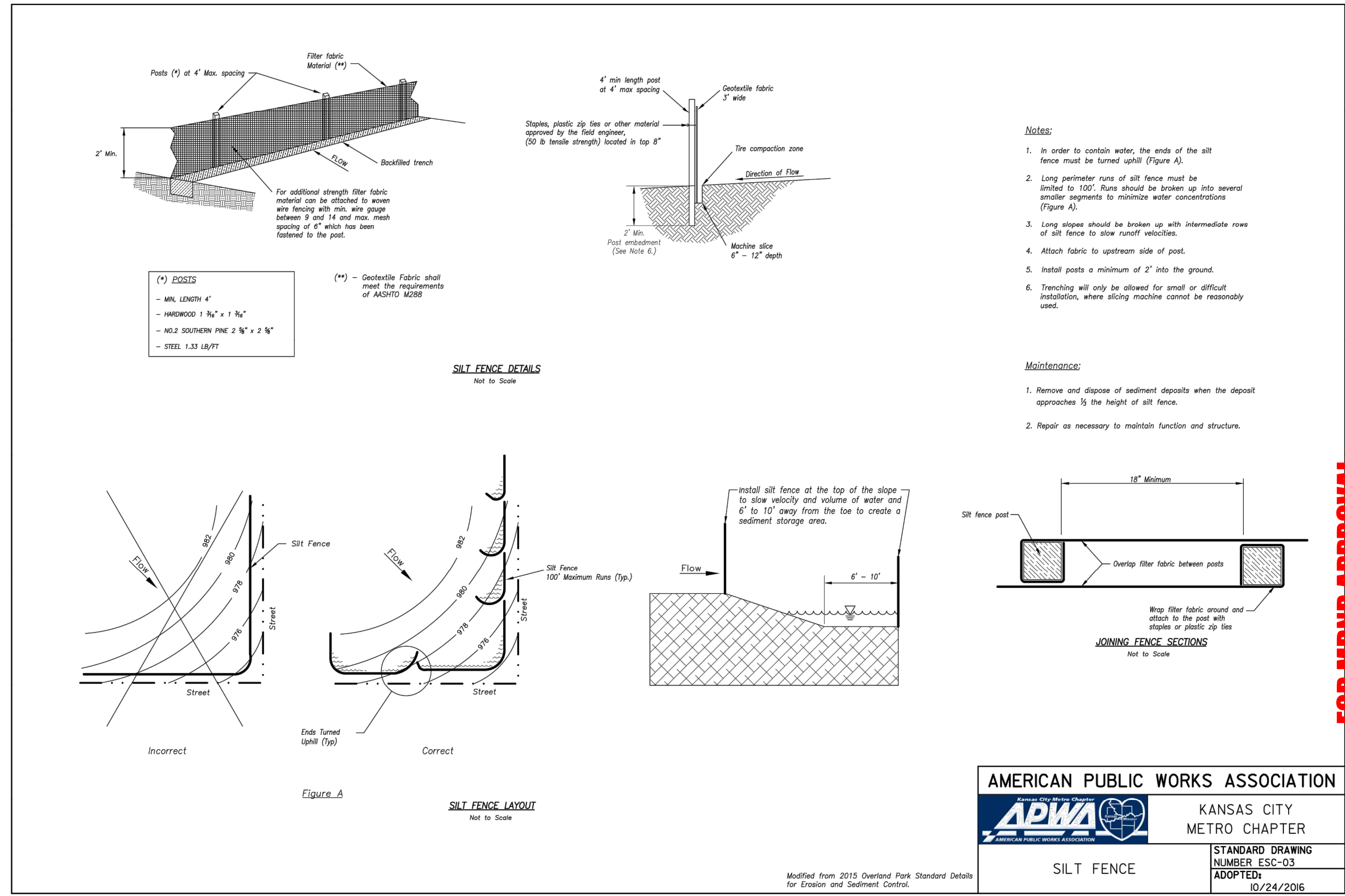
**B) TROUBLESHOOTING:**

1. CONSULT WITH A QUALIFIED DESIGN PROFESSIONAL IF ANY OF THE FOLLOWING OCCUR:
  - a. INADEQUATE RUNOFF CONTROL TO THE EXTENT THAT SEDIMENT WASHES ONTO PUBLIC ROAD - INSTALL DIVERSIONS OR OTHER RUNOFF CONTROL MEASURES.
  - b. SMALL STONE, THIN PAD, OR ABSENCE OF GEOTEXTILE FABRIC RESULTS IN RUTS AND MUDDY CONDITIONS AS STONE IS PRESSED INTO SOIL - INCREASE STONE SIZE OR PAD THICKNESS OR ADD GEOTEXTILE FABRIC.
  - c. PAD TOO SHORT FOR HEAVY CONSTRUCTION TRAFFIC - EXTEND PAD BEYOND THE MINIMUM 50-FOOT LENGTH AS NECESSARY.

**C) INSPECTION AND MAINTENANCE:**

1. INSPECT STONE PAD AND SEDIMENT DISPOSAL AREA WEEKLY AND AFTER 1/2-INCH OR GREATER STORM EVENTS.
2. RESHAPE PAD AS NEEDED FOR PROPER DRAINAGE AND RUNOFF CONTROL.
3. TOPDRESS WITH CLEAN 2- AND 3-INCH STONE AS NEEDED.
4. IMMEDIATELY REMOVE MUD OR SEDIMENT TRACKED OR WASHED ONTO PUBLIC ROAD. REPAIR ANY BROKEN ROAD PAVEMENT IMMEDIATELY.
5. REMOVE ALL TEMPORARY ROAD MATERIALS FROM AREAS WHERE PERMANENT VEGETATION WILL BE ESTABLISHED.

<b>AMERICAN PUBLIC WORKS ASSOCIATION</b>	
<b>APWA</b>	KANSAS CITY METROPOLITAN CHAPTER
TEMPORARY CONSTRUCTION ENTRANCE	STANDARD DRAWING NUMBER ESC-01 ADOPTED:



<b>AMERICAN PUBLIC WORKS ASSOCIATION</b>	
<b>APWA</b>	KANSAS CITY METRO CHAPTER
SILT FENCE	STANDARD DRAWING NUMBER ESC-03 ADOPTED: 10/24/2016

**FOR MDNR APPROVAL**

<b>olsson</b>	Olsson - Civil Engineering Missouri Certificate of Authority # 001592 1301 Burlington Street North Kansas City, MO 64116 TEL 816.361.1177 www.olson.com
	<b>TERRY M. PARSONS</b> PROFESSIONAL ENGINEER NUMBER PE-2018010505 11/19/2021

REV. NO.	DATE	REVISIONS DESCRIPTION
1	8-25-2021	AS1 #29 - REVISED PER CITY COMMENTS
2	10-14-2021	REVISED FOR MDNR SUBMITTAL

EROSION CONTROL DETAILS	2021
BIG CREEK INTERCEPTOR SEWER UPSIZING LEE'S SUMMIT MIDDLE SCHOOL #4	2021
LEE'S SUMMIT, MO	2021

RELEASED FOR CONSTRUCTION  
As Noted on Plans Review  
Development Services Department  
Lee's Summit, Missouri  
11/16/2021

drawn by: NG  
 checked by: BH  
 approved by: BH  
 QA/QC by: JS  
 project no.: 020-01030  
 drawing no.:  
 date: 07.15.2021