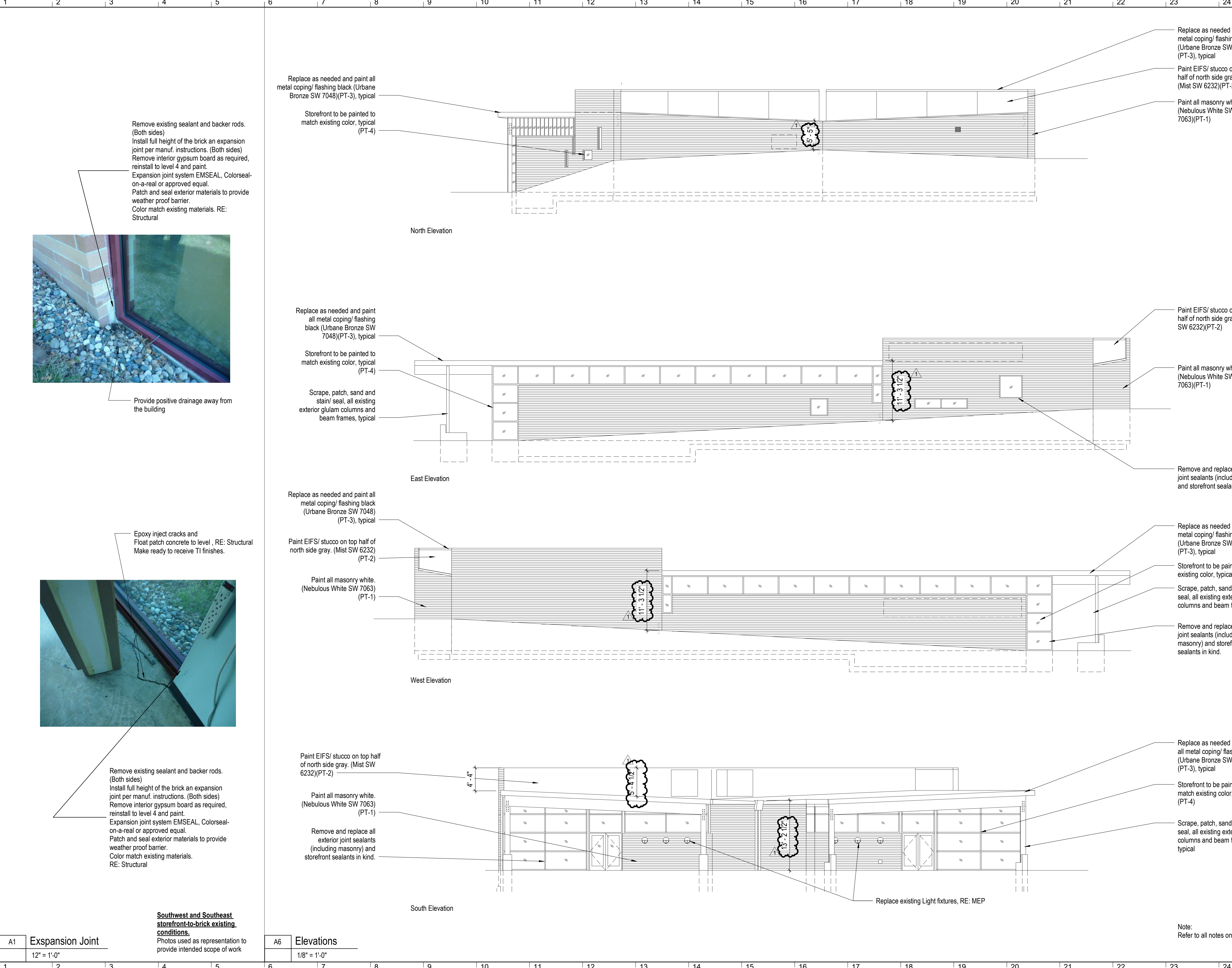


J:\Murray Investors LLC- 451 NW Murray Rd-Lees Summit\2021.375 Building Demising White Box2 Drawings and Specifications\2021.375 - Building Demising White Box - BUSINESS OCC - SINGLE SPACE.rvt



GastingerWalker &

Architects Interior Designers Construction Managers
817 Wyandotte Kansas City, Missouri 64105 816.421.8200 gastingerwalker.com

STRUCTURAL
Bob D. Campbell & Company
4338 Bellevue Rd
Kansas City, Missouri 64111
816.531.4144

MEP
Lankford | Fendler +
associates Consulting
Engineers, Inc.
1730 Walnut Street
Kansas City, MO 64108
816.221.1411

451 NW Murray Rd Renovation

451 NW Murray Rd
Lees Summit, MO 64081

ISSUED FOR:

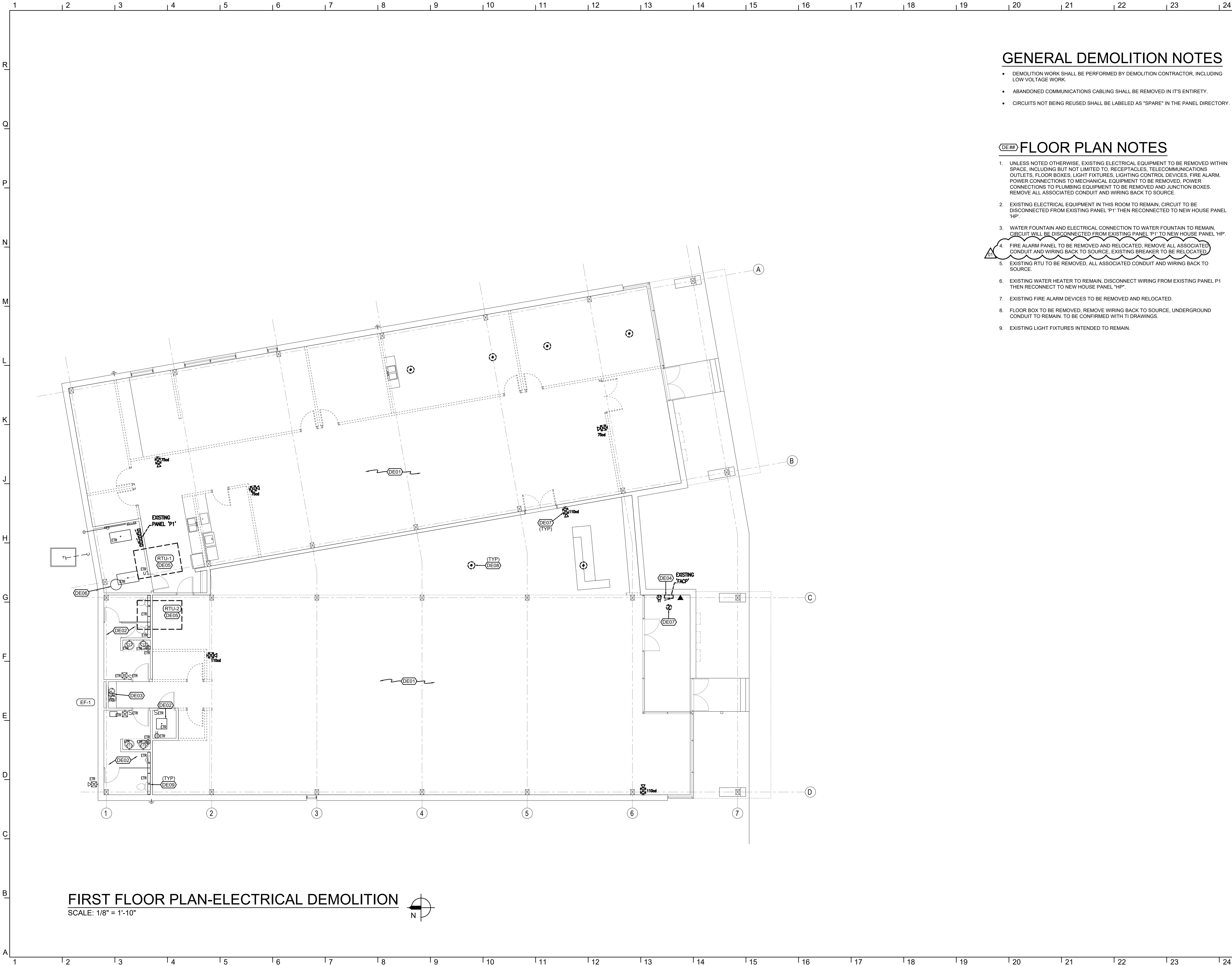
Permit / Bid 29 OCT 2021
Response To Comments #1 04 NOV 2021



Drawn By MS
Checked By KR

Elevations

A1



FIRST FLOOR PLAN-ELECTRICAL DEMOLITION
SCALE: 1/8" = 1'-10"

GENERAL DEMOLITION NOTES

- DEMOLITION WORK SHALL BE PERFORMED BY DEMOLITION CONTRACTOR, INCLUDING LOW VOLTAGE WORK.
- ABANDONED COMMUNICATIONS CABLING SHALL BE REMOVED IN IT'S ENTIRETY.
- CIRCUITS NOT BEING REUSED SHALL BE LABELED AS "SPARE" IN THE PANEL DIRECTORY.

FLOOR PLAN NOTES

- UNLESS NOTED OTHERWISE, EXISTING ELECTRICAL EQUIPMENT TO BE REMOVED WITHIN SPACE, INCLUDING BUT NOT LIMITED TO: RECEPTACLES, TELECOMMUNICATIONS OUTLETS, FLOOR BOXES, LIGHT FIXTURES, LIGHTING CONTROL DEVICES, FIRE ALARM, POWER CONNECTIONS TO MECHANICAL EQUIPMENT TO BE REMOVED, POWER CONNECTIONS TO PLUMBING EQUIPMENT TO BE REMOVED AND JUNCTION BOXES. REMOVE ALL ASSOCIATED CONDUIT AND WIRING BACK TO SOURCE.
- EXISTING ELECTRICAL EQUIPMENT IN THIS ROOM TO REMAIN, CIRCUIT TO BE DISCONNECTED FROM EXISTING PANEL "P1" THEN RECONNECTED TO NEW HOUSE PANEL "HP".
- WATER FOUNTAIN AND ELECTRICAL CONNECTION TO WATER FOUNTAIN TO REMAIN, CIRCUIT WILL BE DISCONNECTED FROM EXISTING PANEL "P1" TO NEW HOUSE PANEL "HP".
- FIRE ALARM PANEL TO BE REMOVED AND RELOCATED, REMOVE ALL ASSOCIATED CONDUIT AND WIRING BACK TO SOURCE, EXISTING BREAKER TO BE RELOCATED.
- EXISTING RTU TO BE REMOVED, ALL ASSOCIATED CONDUIT AND WIRING BACK TO SOURCE.
- EXISTING WATER HEATER TO REMAIN, DISCONNECT WIRING FROM EXISTING PANEL P1 THEN RECONNECT TO NEW HOUSE PANEL "HP".
- EXISTING FIRE ALARM DEVICES TO BE REMOVED AND RELOCATED.
- FLOOR BOX TO BE REMOVED, REMOVE WIRING BACK TO SOURCE, UNDERGROUND CONDUIT TO REMAIN, TO BE CONFIRMED WITH TI DRAWINGS.
- EXISTING LIGHT FIXTURES INTENDED TO REMAIN.

GastingWalker &

Architects Interior Designers Construction Managers
817 Wyandotte Kansas City Missouri 64105 816.421.8200 gastingwalker.com

STRUCTURAL
Bob D. Campbell & Company
4338 Bellevue Rd
Kansas City, Missouri 64111
816.531.4144

MEP
Lankford + Fendler
+ associates
1730 Walnut Street Kansas City, Missouri 64108
1915 Frederick Avenue, St. Joseph, Missouri 64501
Phone: 816.221.1411 | Fax: 816.221.1429
LANKFORD | FENDLER + ASSOCIATES, CONSULTING ENGINEERS, INC.
COPYRIGHT © 2021 Project No. 21-0884-00
COA No. 2006001168

451 NW Murray
Rd Renovation

451 NW Murray Rd
Lees Summit, MO 64081

ISSUED FOR:

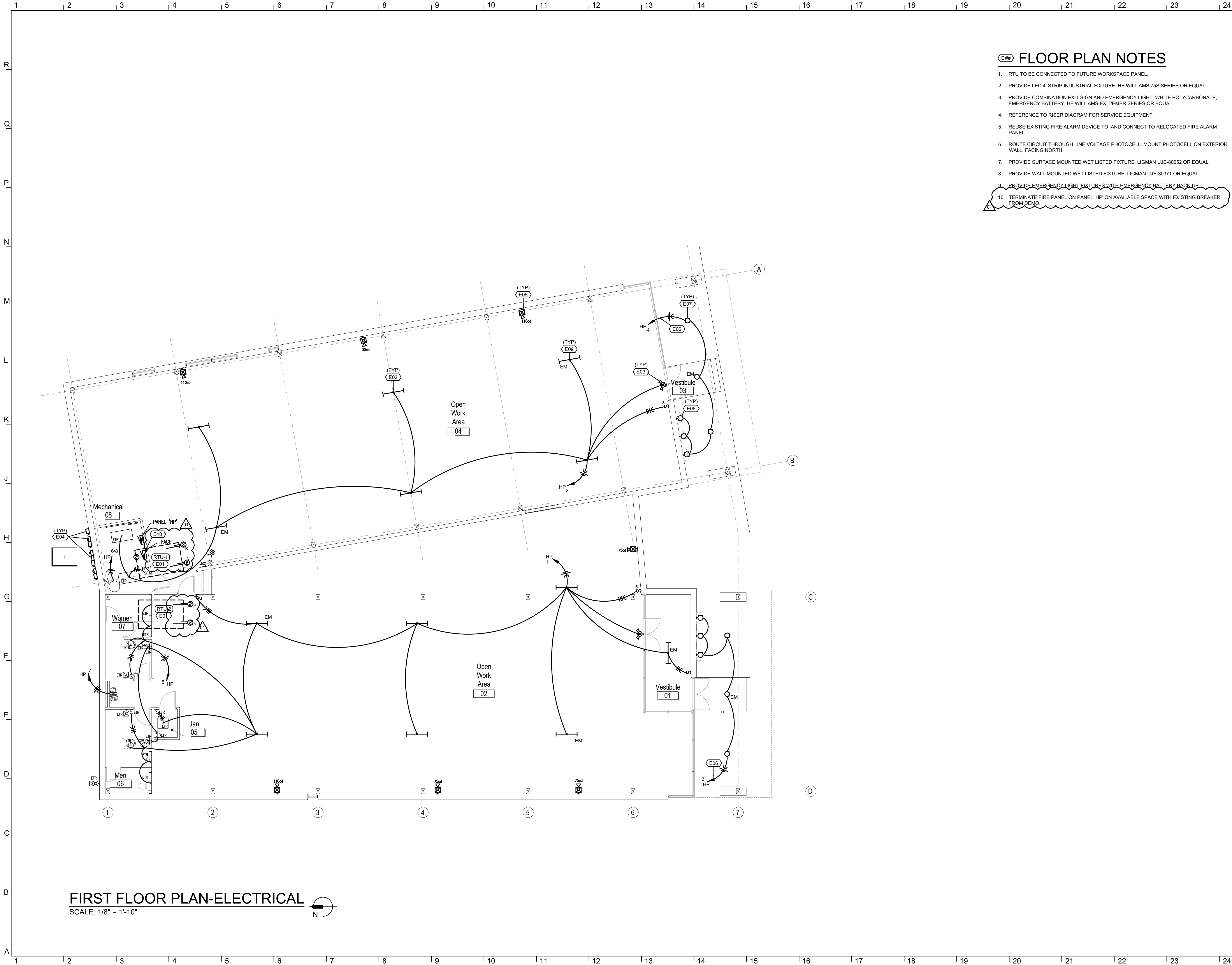
Permit / Bid 29 OCT 2021
Revision 1 City Comments 08 NOV 2021



Drawn By Author
Checked By Checker

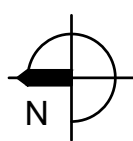
FIRST FLOOR PLAN-
ELECTRICAL DEMOLITION

E1



FIRST FLOOR PLAN-ELECTRICAL

SCALE: 1/8" = 1'-10"



FLOOR PLAN NOTES

- RTU TO BE CONNECTED TO FUTURE WORKSPACE PANEL.
- PROVIDE LED 4' STRIP INDUSTRIAL FIXTURE. HE WILLIAMS 75S SERIES OR EQUAL.
- PROVIDE COMBINATION EXIT SIGN AND EMERGENCY LIGHT. WHITE POLYCARBONATE. EMERGENCY BATTERY. HE WILLIAMS EXITE/EMER SERIES OR EQUAL.
- REFERENCE TO RISER DIAGRAM FOR SERVICE EQUIPMENT.
- REUSE EXISTING FIRE ALARM DEVICE TO AND CONNECT TO RELOCATED FIRE ALARM PANEL.
- ROUTE CIRCUIT THROUGH LINE VOLTAGE PHOTOCCELL. MOUNT PHOTOCCELL ON EXTERIOR WALL, FACING NORTH.
- PROVIDE SURFACE MOUNTED WET LISTED FIXTURE. LIGMAN UJE-80052 OR EQUAL.
- PROVIDE WALL MOUNTED WET LISTED FIXTURE. LIGMAN UJE-30371 OR EQUAL.
- PROVIDE EMERGENCY LIGHT FIXTURES WITH EMERGENCY BATTERY BACK-UP.
- TERMINATE FIRE PANEL ON PANEL 'HP' ON AVAILABLE SPACE WITH EXISTING BREAKER FROM DEMO.

GastingerWalker & Associates

Interior Designers
Construction Managers
Architects
817 Wyandotte
Kansas City Missouri 64105 816.421.8200
gastingerwalker.com

STRUCTURAL
Bob D. Campbell & Company
4338 Belleview Rd
Kansas City, Missouri 64111
816.531.4144

MEP
Lankford + Fendler
+ associates
1730 Walnut Street Kansas City, Missouri 64108
1915 Frederick Avenue, St. Joseph, Missouri 64501
Phone: 816.221.1411 | Fax: 816.221.1429
LANKFORD | FENDLER + ASSOCIATES, CONSULTING ENGINEERS, INC.
COPYRIGHT © 2021 Project No. 21-0884-00
COA No. 2006001168

451 NW Murray Rd Renovation

451 NW Murray Rd
Lees Summit, MO 64081

ISSUED FOR:

Permit / Bid 29 OCT 2021
Revision 1 City Comments 08 NOV 2021



Drawn By
Checked By
Author
Checker

FIRST FLOOR PLAN-
POWER

E2

NEW
SERVICE: 208/120 VOLT, 3 - PHASE, 4 - WIRE
AMP FRAME: 100 AMP
MAINS: MCB / 100 AMP MAIN BREAKER

PANELBOARD HP SCHEDULE

RATING: 22000 A.I.C.
LOCATION: _

REV
NO.

NOTE
NO.

LOAD
CRT# DESCRIPTION

BRKR
P AMP

LOAD KVA
A B C 3PH

LOAD
CRT# DESCRIPTION

BRKR
P AMP

LOAD KVA
A B C 3PH

NOTE
NO.

REV
NO.

		1	LIGHTING SPACE ONE	1	20	0.4				2	LIGHTING SPACE TWO	1	20	0.4						
		3	EXTERIOR LIGHTING SPACE ONE	1	20		0.4			4	EXTERIOR LIGHTING SPACE TWO	1	20		0.4					
		5	RESTROOM/JANITOR RCPT	1	20			0.54		6	WATER HEATER	2	30			1.7				
		7	WATER FOUNTAIN RCPT	1	20	0.18				8				1.7						
		9	SPARE	1	20					10	SPARE	1	20							
		11	SPARE	1	20					12	SPARE	1	20							
		13	SPARE	1	20					14	SPARE	1	20							
		15	SPARE	1	20					16	SPARE	1	20							
		17	SPARE	1	20					18	SPARE	1	20							
		19	SPARE	1	20					20	SPARE	1	20							
		21	SPARE	1	20					22	SPARE	1	20							
		23	SPARE	1	20					24	SPARE	1	20							
		25		1	20					26		1	20							
		27		1	20					28		1	20							
		29		1	20					30		1	20							

TOTAL: 0.58 0.4 0.54 0

TOTAL: 2.1 0.4 1.7 0.0
0.58 0.4 0.54 0.0
KVA / PHASE TOTAL: 2.68 0.8 2.24 0.0
AMP / PHASE TOTAL: 22.3 6.7 18.7

TOTAL CONNECTED LOAD: 5.72 KVA
TOTAL CONNECTED CURRENT: 15.88 AMPS
LIGHTS @ 125%: 2.00 KVA
RECEPTACLES @ 100%: 0.72 KVA
RECEPTACLES @ 50%: 0.00 KVA
LARGEST MOTOR LOAD @ 125%: 0.00 KVA
CONTINUOUS LOAD @ 125%: 0.00 KVA
OTHER AND NON-CONTINUOUS LOADS @ 100%: 0.00 KVA
TOTAL DEMAND LOAD: 4.42 KVA
POWER FACTOR: 0.95 % PF
TOTAL DEMAND CURRENT: 12.91 AMPS

NOTES:
1

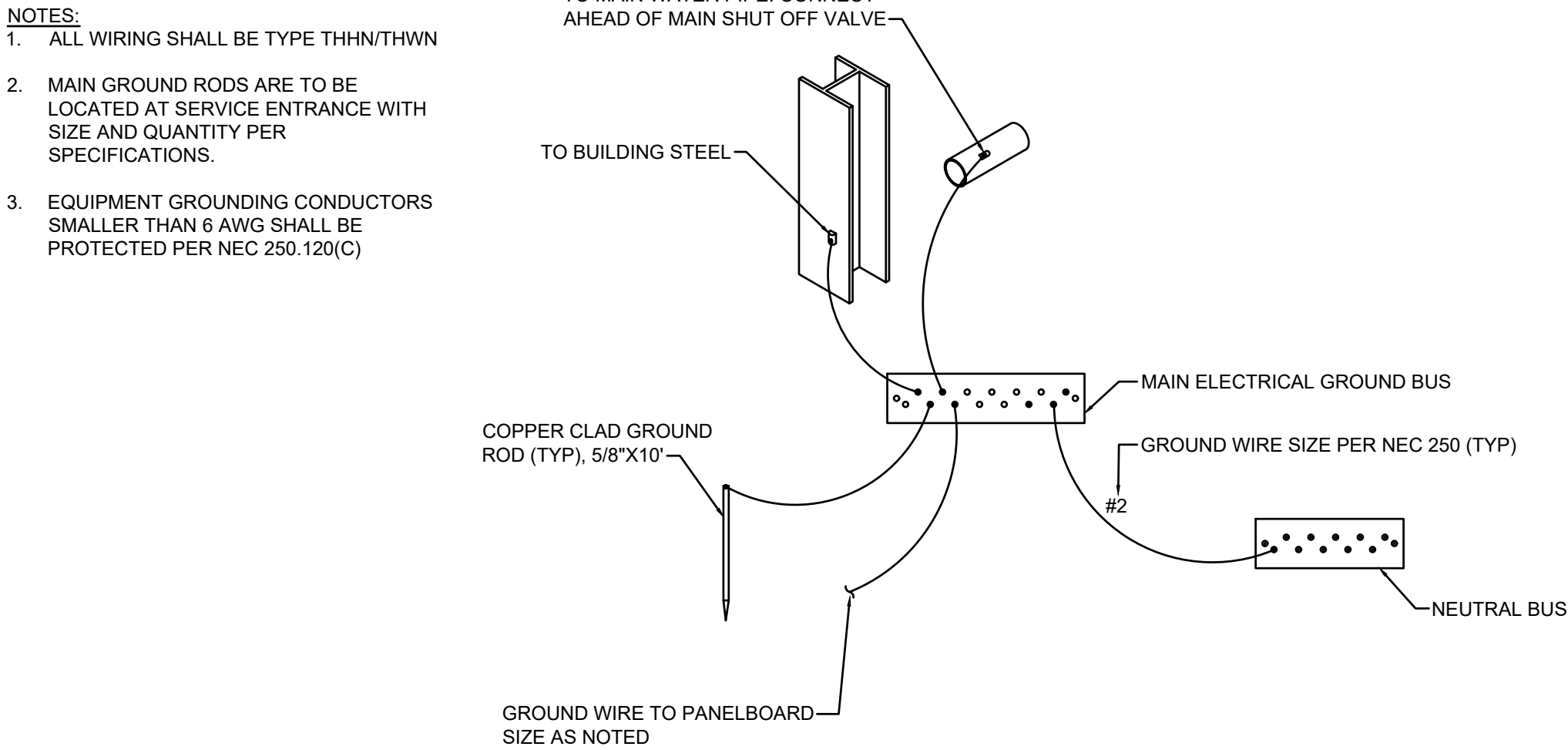
E = EXISTING BREAKER/INDEX/LOAD (ESTIMATED)

REV:

GENERAL NOTE:
CONDUCTOR & CONDUIT SIZING CHART FOR SIZING OF BRANCH
CIRCUITS AND OR FEEDERS AT OR BELOW 100 AMPS

BRANCH CIRCUIT COPPER CONDUCTOR AND CONDUIT SIZING CHART*						
OVERCURRENT PROTECTION DEVICE RATING (AMPS)	REQUIRED CONDUCTOR SIZE	EQUIPMENT GROUNDING CONDUCTOR SIZE	SINGLE PHASE 2 WIRE + GND. CONDUIT SIZE	SINGLE PHASE 3 WIRE + GND. CONDUIT SIZE	THREE PHASE 3 WIRE + GND. CONDUIT SIZE	THREE PHASE 4 WIRE + GND. CONDUIT SIZE
15	12 AWG	12 AWG	3/4"	3/4"	3/4"	3/4"
20	12 AWG	12 AWG	3/4"	3/4"	3/4"	3/4"
25	10 AWG	10 AWG	3/4"	3/4"	3/4"	3/4"
30	10 AWG	10 AWG	3/4"	3/4"	3/4"	3/4"
35	8 AWG	10 AWG	3/4"	3/4"	3/4"	3/4"
40	8 AWG	10 AWG	3/4"	3/4"	3/4"	3/4"
45	6 AWG	10 AWG	3/4"	3/4"	3/4"	1"
50	6 AWG	10 AWG	3/4"	3/4"	3/4"	1"
60	4 AWG	10 AWG	1"	1"	1"	1-1/4"
70	4 AWG	8 AWG	1"	1"	1"	1-1/4"
80	3 AWG	8 AWG	1"	1-1/4"	1-1/4"	1-1/4"
90	2 AWG	8 AWG	1"	1-1/4"	1-1/4"	1-1/4"
100	1 AWG	8 AWG	1-1/4"	1-1/2"	1-1/2"	1-1/2"

- * = UNLESS OTHERWISE NOTED ON THE DRAWINGS.
- * = UNLESS OTHERWISE NOTED ON THE DRAWINGS, ALL BRANCH CIRCUITS AND FEEDERS TO BE PROVIDED WITH A NEUTRAL WIRE.
- * = ALL CONDUCTORS SIZED ON THE POWER RISER DIAGRAM OR IN BRANCH CIRCUIT CONDUCTOR TABLE ARE BASED ON 3 CURRENT CARRYING CONDUCTORS IN A RACEWAY OR CABLE. CONDUCTORS SHALL BE DERATED IN ACCORDANCE WITH THE NEC IF 4 OR MORE CONDUCTORS ARE PLACED IN A RACEWAY OR CABLE.

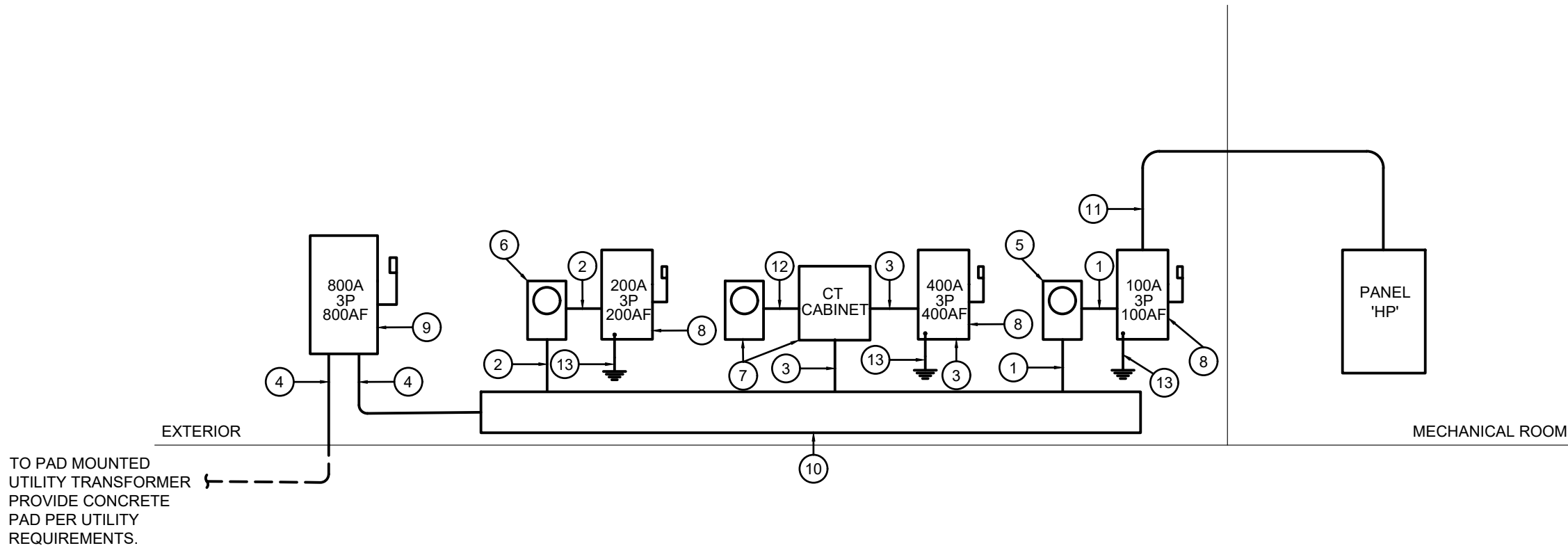
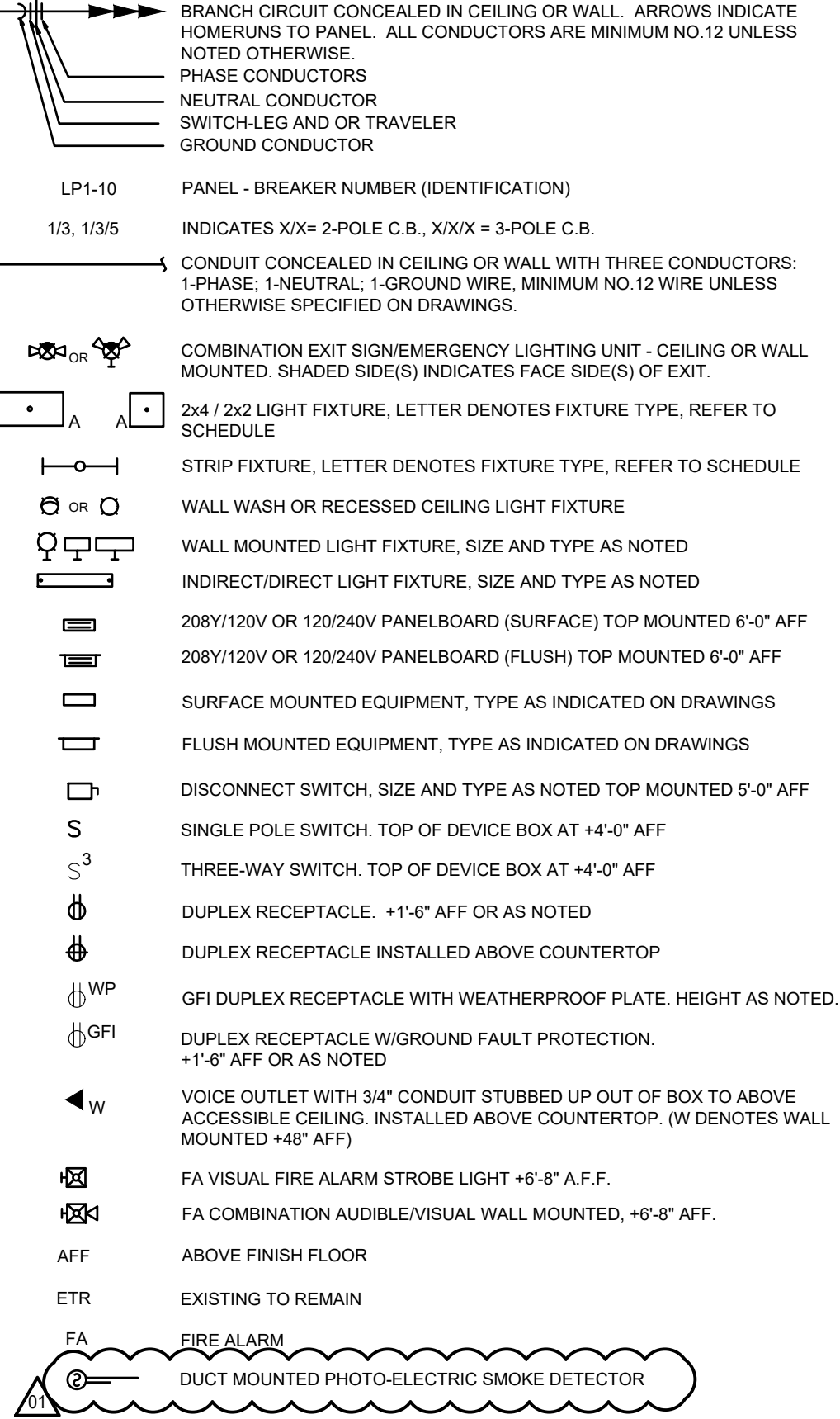


MAIN SERVICE ENTRANCE GROUNDING DETAIL
NO SCALE

GENERAL NOTES (TYPICAL ALL SHEETS)

- A. ANY MATERIAL REMOVED THAT OWNER DOES NOT WISH TO RETAIN SHALL BE REMOVED FROM PROJECT SITE AND DISPOSED OF BY THE CONTRACTOR.
- B. NEW CIRCUITRY SHOWN FOR NEW/EXISTING POWER AND LIGHTING IS DIAGRAMMATIC AND IS INTENDED TO SHOW WHICH DEVICES ARE TO BE GROUPED ON INDIVIDUAL CIRCUITS. EXISTING WIRING THAT CONFORMS TO THE INTENT OF THE DRAWINGS MAY BE USED.
- C. PROVIDE UPDATED, TYPEWRITTEN PANELBOARD DIRECTORY FOR EACH PANELBOARD WHICH CIRCUITS HAVE BEEN ADDED TO OR MODIFIED.
- D. CONTRACTOR TO REFERENCE BRANCH CIRCUIT COPPER CONDUCTOR AND CONDUIT SIZING CHART FOR SIZING OF BRANCH CIRCUITS AND OR FEEDERS AT OR BELOW 100AMPS.
- E. EXISTING RECEPTACLES AND SWITCHES TO REMAIN EXCEPT THOSE THAT ARE CHIPPED, BROKEN OR DAMAGED IN ANY OTHER WAY SHALL BE REPLACED TO MATCH EXISTING.
- F. SUPPORT ALL LIGHT FIXTURES WITH A MINIMUM OF (4) 12 GA. HANGER WIRES TO STRUCTURE ABOVE.
- G. CONNECT EXIT AND EMERGENCY LIGHTS TO HOT LEG, NOT SWITCH LEG.
- H. CLEAN AND CHECK ALL EXISTING LIGHT FIXTURES FOR PROPER OPERATION AND REPLACE ANY BROKEN SOCKETS, LENS, LOUVERS, OR DEFECTIVE BALLAST. RELAMP ALL EXISTING FIXTURES WITH NEW LAMPS.
- I. THE ELECTRICAL CONTRACTOR SHALL INCLUDE IN BID ALL COSTS ASSOCIATED WITH FIRE ALARM MODIFICATIONS. THIS WORK SHALL INCLUDE POWER EXTENDER PANEL, SMOKE DETECTORS, HORN/STROBES, PULL STATIONS, REMOTE INDICATING LIGHTS AND ANY OTHER FIRE ALARM WORK SHOWN ON PLANS. ALL WIRING, PLENUM RATED CABLING, BETWEEN DEVICES SHALL BE INCLUDED IN WORK TO PROVIDE AN OPERATIONAL EXTENSION OF THE EXISTING FIRE ALARM SYSTEM.
- J. CONDUIT SHALL BE USED FOR CONDUCTORS WHERE REQUIRED BY N.E.C.
- K. CONTRACTOR SHALL CALCULATE VOLTAGE DROP AND SIZE WIRE ACCORDINGLY. PER N.E.C.
- L. INSTALL FIRE ALARM DEVICES THAT COMPLY WITH APPLICABLE CODES. INCLUDING BUT NOT LIMITED TO THE FAIR HOUSING ACT, NFPA, UL, ADA, IBC OR ANY OTHER AUTHORITIES HAVING JURISDICTION.
- M. FIRE ALARM CONTRACTOR IS RESPONSIBLE OF TESTING AND VERIFYING THAT THE AUDIBILITY OF THE FIRE ALARM SYSTEM MEETS A MINIMUM OF 15 DBA ABOVE AMBIENT NOISE LEVELS. AFTER INSTALLATION AND BEFORE CERTIFICATE OF OCCUPANCY. ADD HORNS WHERE REQUIRED TO MAINTAIN MINIMUM LEVELS.

ELECTRICAL SYMBOLS



RISER DIAGRAM
NO SCALE

ⓧ RISER NOTES

1. PROVIDE 100 AMP FEEDER: 1-1/2"C, 4-#1.
2. PROVIDE 200 AMP FEEDER: 2" C, (4)#3/0.
3. PROVIDE 400 AMP FEEDER: (2) SETS OF 2-1/2"C, 4-#3/0.
4. PROVIDE 800 AMP SERVICE: (3) SETS OF 3"C, 4-#300.
5. PROVIDE 100 AMP, 120/208 VOLT, 3 PHASE, UTILITY METER SOCKET PER UTILITY COMPANY STANDARDS. GROUND PER UTILITY COMPANY STANDARDS.
6. PROVIDE 200 AMP, 120/208 VOLT, 3 PHASE, UTILITY METER SOCKET PER UTILITY COMPANY STANDARDS. GROUND PER UTILITY COMPANY STANDARDS.
7. PROVIDE 400 AMP, 120/208 VOLT, 3 PHASE, UTILITY METER SOCKET AND CT CABINET PER UTILITY COMPANY STANDARDS. GROUND PER UTILITY COMPANY STANDARDS.
8. PROVIDE FUSED DISCONNECT SWITCH WITH NEMA 3R ENCLOSURE. PROVIDE WITH CLASS J FUSES.
9. PROVIDE FUSED DISCONNECT SWITCH WITH NEMA 3R ENCLOSURE. PROVIDE WITH CLASS L FUSES. GROUND PER UTILITY COMPANY STANDARDS.
10. PROVIDE NEMA 3R GUTTER WIREWAY. SPLICE INCOMING SERVICE CONDUCTORS TO HOUSE AND FUTURE SERVICE CONDUCTORS WITHIN WIREWAY. GROUND PER UTILITY COMPANY STANDARDS.
11. PROVIDE 100 AMP SERVICE: 1-1/2"C, 4-#1, 1-#8 GROUND.
12. PROVIDE 1-1/4"C FOR UTILITY METERING CABLES PER UTILITY COMPANY STANDARDS.
13. REFER TO SERVICE GROUNDING DETAIL.

GastingerWalker &

Construction Managers
Interior Designers
Architects

Kansas City Missouri 64105 816.421.8200
gastingerwalker.com

STRUCTURAL
Bob D. Campbell & Company
4338 Bellevue Rd
Kansas City, Missouri 64111
816.531.4144

MEP
Lankford Fendler
+ associates
1730 Walnut Street Kansas City, Missouri 64108
1915 Frederick Avenue, St. Joseph, Missouri 64501
Phone: 816.221.1411 | Fax: 816.221.1429
LANKFORD | FENDLER + ASSOCIATES, CONSULTING ENGINEERS, INC.
COPYRIGHT © 2021 Project No. 21-0854-00
COA No. 2006001168

451 NW Murray
Rd Renovation

451 NW Murray Rd
Lees Summit, MO 64081

ISSUED FOR:

Permit / Bid 29 OCT 2021
Revision 1 City Comments 08 NOV 2021



Drawn By
Checked By
Author
Checker

ELECTRICAL DETAILS

E3