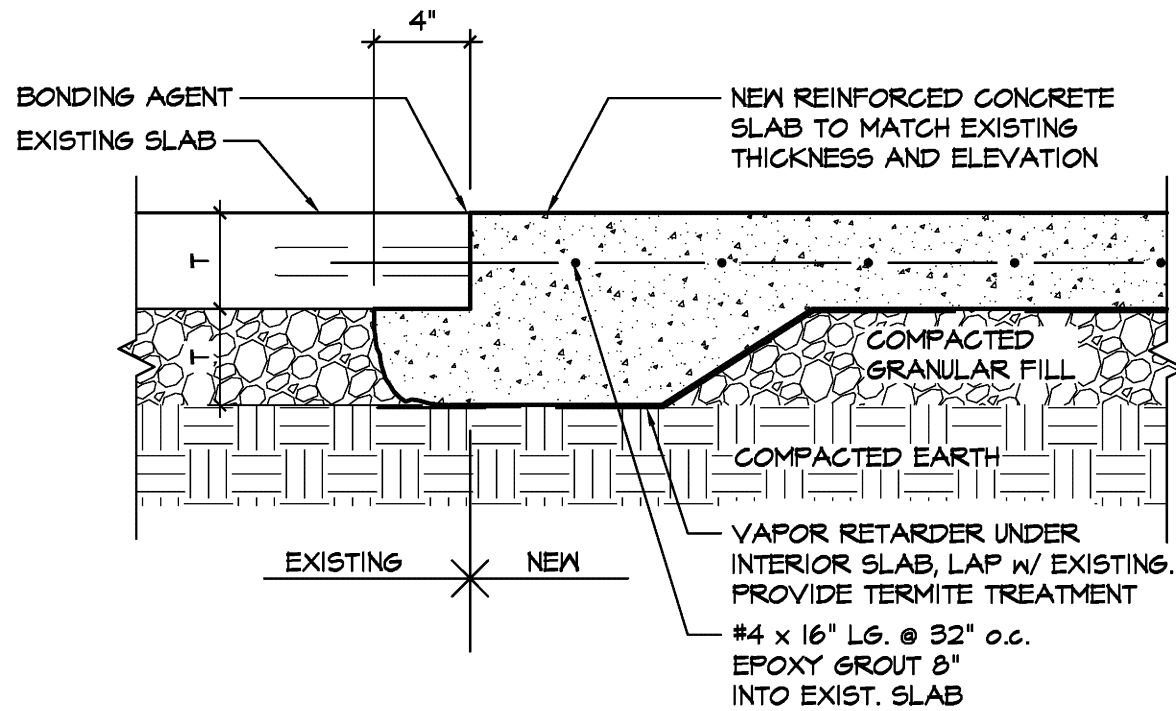


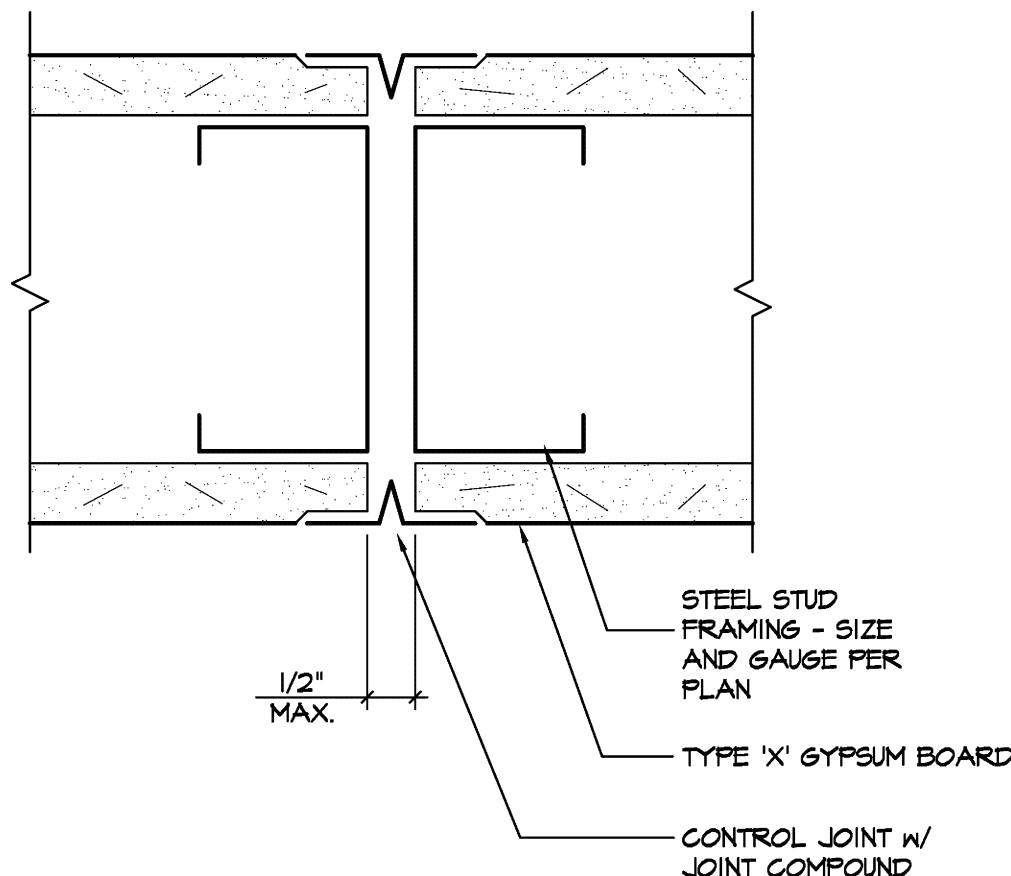
A | TACTILE SIGNAGE

N.T.S.



B | CONCRETE SLAB INFILL

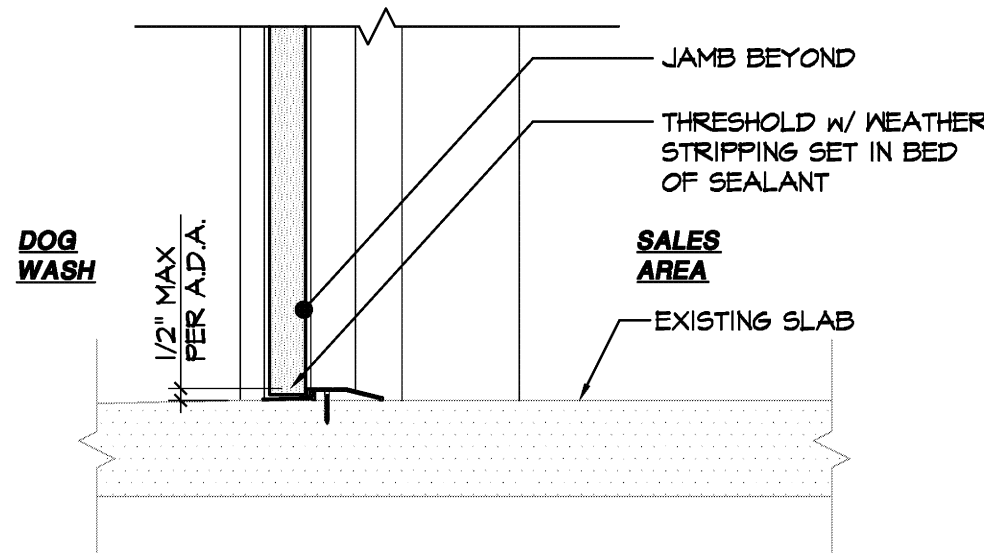
1-1/2"=1'-0"



PROVIDE CONTROL JOINTS IN WALLS OVER 30'-0" LONG AT 30'-0" MAX. O.C. - TYP.

C | GYP. BD. CONTROL JOINT

HALF FULL



D | THRESHOLD DETAIL

1-1/2"=1'-0"

TOILET ROOM ACCESSORY SCHEDULE

DESCRIPTION	MANUFACTURER	NUMBER	MOUNTING HT (A.F.F.)	NOTE
1 PAPER TOWEL DISPENSER	BY TENANT	-	40" TO TOWEL	SURFACE MOUNTED
2 TOILET PAPER HOLDER	BY TENANT	-	-	
3 MIRROR	BOBRICK	B-1658	40" TO BOTTOM OF REFLECTIVE SURFACE	2'-0"x3'-0"x1/4" PLATE GLASS MIRROR
4 SOAP DISPENSER	BY TENANT	-		
5 CANE DETECTION RAIL	BUY RAILINGS	1833		
6 HORIZONTAL GRAB BARS	BOBRICK	B-6806x36" B-6806x42"	35" TO TOP	SATIN STAINLESS STEEL FINISH AND CONCEALED FASTENERS
7 VERTICAL GRAB BAR	BOBRICK	B-6806X18"	40" TO BOTTOM	SATIN STAINLESS STEEL FINISH AND CONCEALED FASTENERS

RESTROOM FIXTURE GENERAL NOTES:

1. REFER TO PLANS AND ELEVATIONS FOR LOCATION OF FIXTURES
2. REFER TO PLUMBING PLANS AND SPECIFICATIONS FOR COMPLETE FIXTURE INFORMATION
3. PROVIDE BLOCKING IN WALLS FOR SUPPORT OF LISTED ACCESSORIES
4. MOUNT ACCESSORY W/ HIGHEST OPERABLE COMPONENT NO HIGHER THAN THE HEIGHT INDICATED
5. LAVATORY APPURTENANCES ARE TO BE INSTALLED PER ADA/ANSI A117.1 GUIDELINES AND IN ACCORDANCE W/ MANUFACTURER'S RECOMMENDATIONS. COORDINATE WORK W/ ALL RELATED TRADES.
6. EXPOSED PIPING & CONTROLS UNDER LAVATORY TO BE PROTECTED W/ "LAV. GUARD-2" UNDERSINK PIPE COVERS "TRUEPRO" (OR APPROVED EQUAL) PER 2010 ADA STANDARDS & ANSI A117.1-606.6

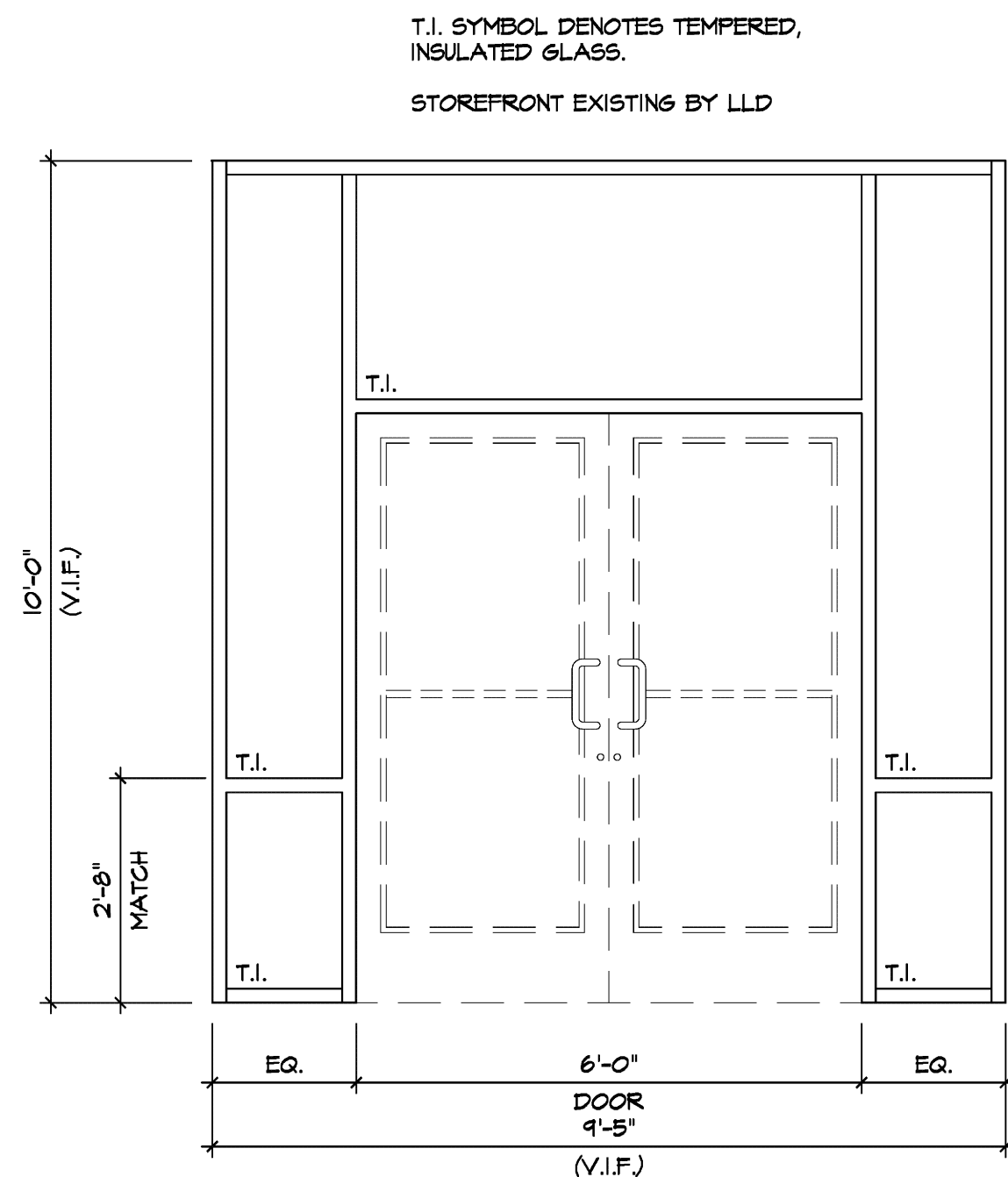
CODE COMPLIANCE PER FIXTURE

WATER CLOSET PER ADA 604/ANSI 117.1-604

LAVATORY PER ADA 606/ANSI 117.1-606

GRAB BARS PER ADA 609/ANSI A117.1-609

IN-FILL STOREFRONT ELEVATION



FINISH MATERIAL SCHEDULE

MATERIAL	SYMBOL	DESCRIPTION	NUMBER	COLOR	MANUFACTURER	COMMENTS / CONTACT
QUARRY TILE	QT-1	6"x6" QUARRY NATURALS	A9-N46-66P	SHADOW GRAY	AMERICAN OLEAN	
QUARRY BASE TILE	QB-1	6"H QUARRY NATURALS	-	SHADOW GRAY	AMERICAN OLEAN	6" HIGH COVERED BASE
QUARRY TILE GROUT	G-1	FLOOR GROUT	104	TIMBERWOLF	MAPEI	WITH GROUT BOOST FOR WATERPROOFING. APPLY SEALER FOLLOWING CONSTRUCTION.
CERAMIC TILE	CT-1	6"x6" CERAMIC TILE (GLOSS)	0041	CERAMIC BISCUIT	AMERICAN OLEAN	STACK SOLDIER COURSE W/ BULLNOSE TRIM TO MATCH. REVEALS TO BE ALIGNED
CERAMIC TILE GROUT	G-2	WALL GROUT	06	HARVEST	MAPEI	WITH GROUT BOOST FOR WATERPROOFING. APPLY SEALER FOLLOWING CONSTRUCTION
VINYL TILE	VCT-1	12"x12" VINYL TILE	51804	EARTH STONE GREIGE	ARMSTRONG	
VINYL BASE	VB-1	4" STRAIGHT BASE	80	FAVN	JOHNSONITE	
COVE BASE	VB-2	6" COVE BASE		FAVN	JOHNSONITE	
LUXURY VINYL TILE	LVT-1	PLANK	X-3046	TEC	TANBUS I GENTIVA	
FIBER-REINFORCED PLASTIC	FRP-1	FRP PANELS, PEBBLED SURFACE	P100	WHITE	MARLITE	PROVIDE APPROPRIATE TRIM FOR MOUNTING AND FINISHING. CLASS III/C. FIRE RATINGS PER ASTM-84 FLAME AND SMOKE
PAINT	P-1	LATEX PAINT	SW6148	WOOL SKEIN	SHERWIN WILLIAMS	
	P-2	LATEX PAINT/ DRYFALL	SWT007	CEILING WHITE	SHERWIN WILLIAMS	
	P-3	LATEX PAINT/ DRYFALL	SW6148	BLACK OF NIGHT	SHERWIN WILLIAMS	
PLASTIC LAMINATE	PLM-1	PLASTIC LAMINATE	4847-38	MISSION SMOKE	WILSONART	
SEALED CONCRETE	SC-1	SEALED CONCRETE	-	-		BY TENANT
SEALED CONCRETE	SC-1	SEALED CONCRETE WITH SLIP RESISTANT TEXTURE FINISH	-	-		ADD WATERPROOF SEALANT
ACOUSTIC CEILING TILE	ACT-1	24"x48" ACOUSTIC CEILING TILE		WHITE	USG GRID-DXL ACC SUSPENSION SYSTEM (FLAT WHITE OSO) MAIN TEE: DXL24, 12, CROSS TEE: 1-1/2" DXL 424, PANELS: (DOG WASH) SHEET ROCK BLEND, CLIMA PLUS LAY IN AC. CEILING PANELS W/ FIRECODE	
	ACT-2	24"x48" ACOUSTIC CEILING TILE	T8575HRC	ECLIPSE	USG	WHITE SQUARE EDGE
CORNER GUARDS	CG-1	2"x2"x48"	16 6A SATIN FINISH	STAINLESS STEEL	-	ADHESIVE APPLIED. ALL OUTSIDE CORNERS, TYP

NOTE: ALL DOORS, DOOR FRAMES AND WOOD TRIM TO HAVE SEMI-GLOSS FINISH, WALLS TO HAVE EGGSHELL FINISH, AND CEILING TO HAVE FLAT FINISH

ROOM FINISH SCHEDULE

ROOM NAME	FLOOR	WALLS	BASE	CEILING	CEILING HEIGHT	COMMENTS
100 - SALES	SC-1	P-1	VB-1	P-2	OPEN CEILING	PAINT DECK INCLUDING ALL STRUCTURE AND CONDUITS AND DEVICES
101 - OFFICE/UTILITY	SC-1	P-1	VB-1	P-2	OPEN CEILING	PAINT DECK INCLUDING ALL STRUCTURE AND CONDUITS AND DEVICES
102 - DOG WASH	SC-1	CT-1	QB-1	ACT-1	9'-0"	ALL WALLS TILED FLOOR TO CEILING. ROUGH TEXTURE FLOORING. APPLY 2 COATS SEALANT.
104 - TOILET	VCT-1	P-1	VB-2	GB-1/P-2	9'-0"	

DOOR & FRAME SCHEDULE

NO.	DOORS				FRAMES		HARDWARE	COMMENTS
	TYPE	DESCRIPTION	SIZE	FINISH	MATERIAL	FINISH		
01	A	ALUMINUM GLASS	PR3'-0" x T1'-0"		ALUMINUM		1, 3, 4, 8, 11, 15, 17,	
02	D	HM - SPLIT DOUBLE DOOR	3'-0" x T1'-0"	PAINTED P-1 INTERIOR AND PAINT TO MATCH ADJACENT ON EXTERIOR			1, 4, 7, 11, 13, 16, 17	WITH 4" HEAD FRAME. HARDWARE LISTED FOR 3'-0" LEAF. 2'-0" LEAF TO HAVE FLOOR AND HEAD BOLTS W/ ASTRAGAL
03	C	WOOD SOLID CORE	3'-0" x T1'-0"	P-1		P-1	1, 6, 7, 10, 13, 22	
04	C	WOOD SOLID CORE	3'-0" x T1'-0"	P-1		P-1	1, 6, 7, 10, 13, 22	
05	C	WOOD SOLID CORE	3'-0" x T1'-0"	P-1	HM	P-1	1, 6, 7, 13, 20	
06	C	WOOD SOLID CORE	3'-0" x T1'-0"	P-1	HM	P-1	1, 7, 13, 20	UNDERCUT DOOR 1"

HARDWARE SCHEDULE

1. (3) HINGES, 4 1/2" STD W/TC, EGBB100 4 1/2" x 4 1/2", US26D, HAGER
2. PASSAGE LOCKSET WITH LEVER HANDLES
3. PUSH/ PULL SET, 151Vx34N-CTC, US32D, HAGER
4. RIM EXIT DEVICE V4004BN x 36 x 94 (ACTIVE DOOR) WITH EXTERIOR LEVER
5. RIM EXIT DEVICE 4101 RIM 36 x 1-3/4 ALM, HAGER
6. PRIVACY LOCKSET - 2540 x 2-3/4 SC x WTN x ASA US26D HAGER
7. CLOSER, SC71 x RW1FA, 684, PARALLEL ARM, FALCON
8. CLOSER, 5500 x MLT x 1-1/2 x 5505 x FC, PARALLEL ARM, ALM, HAGER
9. THUMBTURN DEAD LOCK, 3110, CLASSROOM, US26D, HAGER
10. WALL STOP, 236W, US32D, HAGER
11. WEATHER STRIPPING, T26 18' CHAR, HAGER
12. ASTRAGAL 8355 x USF, HAGER
13. SILENCER 307D GREY, HAGER
14. THRESHOLD, 4125 x MIL, NAT
15. THRESHOLD, 5205N x MIL, HAGER
16. THRESHOLD 4125 x MIL, HAGER
17. DOOR SWEEP T505N CLR HAGER
18. DRIP CAP, B105 x MIL, HAGER
19. FLOOR HOLDER AND STOP, 268F, US26D, HAGER
20. KEYPAD LOCKSET, L102X, 626, SIMPLEX
21. STOREROOM LOCKET WITH LEVER - 3480 x 2-3/4 SC x WTN x ASA US26D HAGER
22. ROOM IDENTIFICATION SIGN

HARDWARE NOTES:

1. HARDWARE SCHEDULES BY REFERENCE TO A MANUFACTURER IS FOR THE PURPOSE OF ESTABLISHING MINIMUM REQUIREMENTS.
2. ALL HANDLES, PULLS, LATCHES, LOCKS AND OTHER OPERATING DEVICES ON ACCESSIBLE DOORS SHALL HAVE A SHAPE THAT IS EASY TO GRASP WITH ONE HAND AND DOES NOT REQUIRE TIGHT GRASPING, PINCHING OR TWISTING TO OPERATE.
3. MAXIMUM EFFORT TO OPERATE DOORS SHALL NOT EXCEED FIVE (5) POUNDS, PUSH & PULL.

DOOR TYPES

