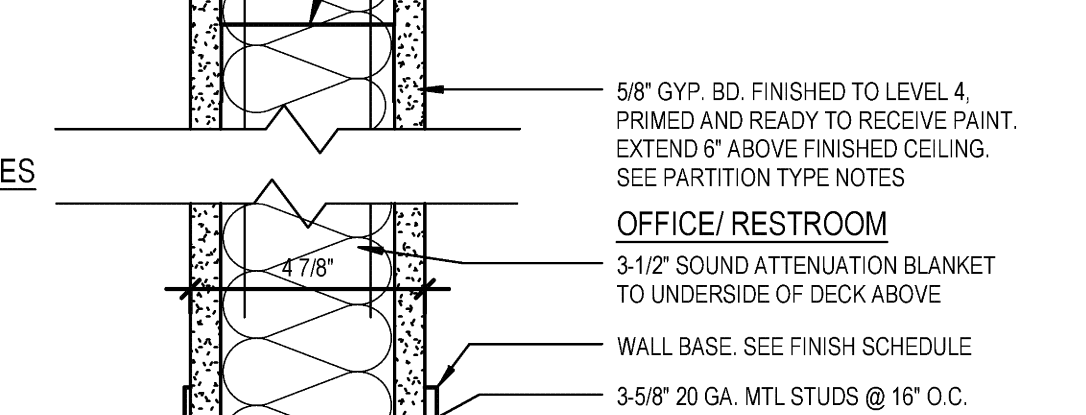


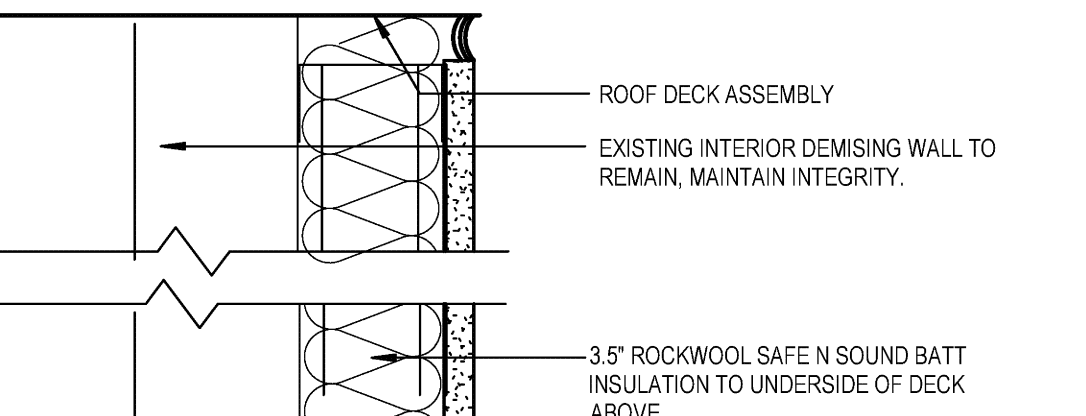
SEE PARTITION TYPE NOTES  
**DOG WASH**  
 6" (3.5" @ W-1) SOUND ATTENUATION BLANKET TO UNDERSIDE OF DECK ABOVE  
 WALL BASE: SEE FINISH SCHEDULE  
 W1: 3-5/8" 20 GA. MTL STUDS @ 16" O.C.  
 W1A: 2" 20 GA. MTL STUDS @ 16" O.C.  
 STEEL RUNNERS ATTACHED WITH ANCHORS 2" O.C.  
 ACOUSTICAL SEALANT  
 FINISH FLOOR



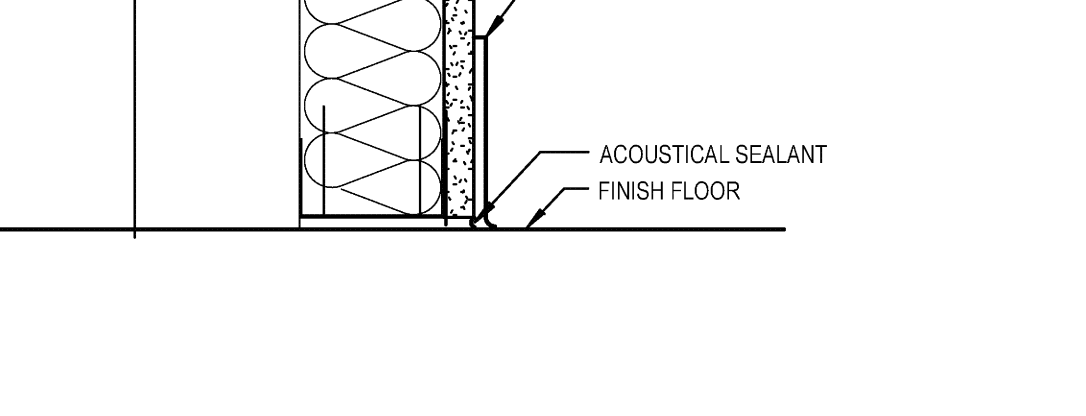
SEE PARTITION TYPE NOTES  
**OFFICE/RESTROOM**  
 3-1/2" SOUND ATTENUATION BLANKET TO UNDERSIDE OF DECK ABOVE  
 WALL BASE: SEE FINISH SCHEDULE  
 3-5/8" 20 GA. MTL STUDS @ 16" O.C.  
 STEEL RUNNERS ATTACHED WITH ANCHORS 2" O.C.  
 ACOUSTICAL SEALANT  
 FINISH FLOOR



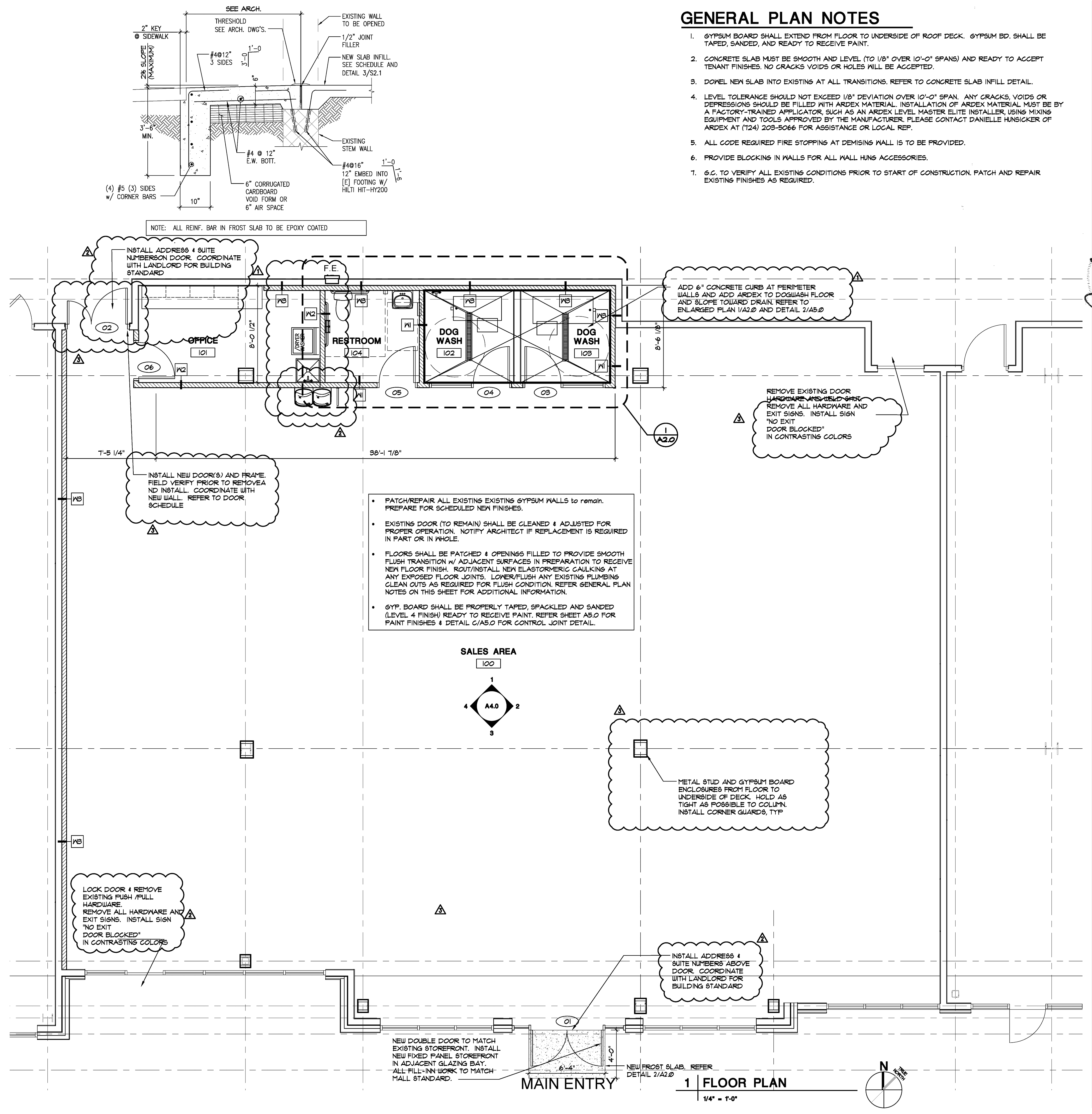
ROOF DECK ASSEMBLY  
 EXISTING INTERIOR DEMISING WALL TO REMAIN, MAINTAIN INTEGRITY.  
 3-5" ROCKWOOL SAFE N SOUND BATT INSULATION TO UNDERSIDE OF DECK ABOVE  
 5/8" GYP. BD. FINISHED TO LEVEL 4, PRIMED AND READY TO RECEIVE PAINT  
 AIR BARRIER  
 WALL BASE: SEE FINISH SCHEDULE  
 ACOUSTICAL SEALANT  
 FINISH FLOOR



ROOF DECK ASSEMBLY  
 EXISTING INTERIOR DEMISING WALL TO REMAIN, MAINTAIN INTEGRITY.  
 3-5" ROCKWOOL SAFE N SOUND BATT INSULATION TO UNDERSIDE OF DECK ABOVE  
 5/8" GYP. BD. FINISHED TO LEVEL 4, PRIMED AND READY TO RECEIVE PAINT  
 AIR BARRIER  
 WALL BASE: SEE FINISH SCHEDULE  
 ACOUSTICAL SEALANT  
 FINISH FLOOR



ROOF DECK ASSEMBLY  
 EXISTING INTERIOR DEMISING WALL TO REMAIN, MAINTAIN INTEGRITY.  
 3-5" ROCKWOOL SAFE N SOUND BATT INSULATION TO UNDERSIDE OF DECK ABOVE  
 5/8" GYP. BD. FINISHED TO LEVEL 4, PRIMED AND READY TO RECEIVE PAINT  
 AIR BARRIER  
 WALL BASE: SEE FINISH SCHEDULE  
 ACOUSTICAL SEALANT  
 FINISH FLOOR



**GENERAL PLAN NOTES**

1. GYPSUM BOARD SHALL EXTEND FROM FLOOR TO UNDERSIDE OF ROOF DECK. GYPSUM BD. SHALL BE TAPED, SANDED, AND READY TO RECEIVE PAINT.
2. CONCRETE SLAB MUST BE SMOOTH AND LEVEL (TO 1/8" OVER 10'-0" SPANS) AND READY TO ACCEPT TENANT FINISHES. NO CRACKS, VOIDS OR HOLES WILL BE ACCEPTED.
3. DOWEL NEW SLAB INTO EXISTING AT ALL TRANSITIONS. REFER TO CONCRETE SLAB INFILL DETAIL.
4. LEVEL TOLERANCE SHOULD NOT EXCEED 1/8" DEVIATION OVER 10'-0" SPAN. ANY CRACKS, VOIDS OR DEPRESSIONS SHOULD BE FILLED WITH ARDEX MATERIAL. INSTALLATION OF ARDEX MATERIAL MUST BE BY A FACTORY-TRAINED APPLICATOR SUCH AS AN ARDEX LEVEL MASTER ELITE INSTALLER. USING MIXING EQUIPMENT AND TOOLS APPROVED BY THE MANUFACTURER. PLEASE CONTACT DANIELLE HANSICKER OF ARDEX AT (724) 293-5066 FOR ASSISTANCE OR LOCAL REP.
5. ALL CODE REQUIRED FIRE STOPPING AT DEMISING WALL IS TO BE PROVIDED.
6. PROVIDE BLOCKING IN WALLS FOR ALL WALL HUNG ACCESSORIES.
7. G.C. TO VERIFY ALL EXISTING CONDITIONS PRIOR TO START OF CONSTRUCTION. PATCH AND REPAIR EXISTING FINISHES AS REQUIRED.

**PARTITION NOTES**  
 1. PROVIDE MOISTURE RESISTANT GYPSUM BOARD @ RESTROOMS, DRINKING FOUNTAINS, MOP SINK AND DOG WASH AREA ON SALES SIDE OF WALL.  
 2. PROVIDE 5/8" THICK CEMENT BOARD BEHIND WALL TILE.  
 3. INSTALL CONTROL JOINTS PER DETAIL ON A5.0

Design and construction documents are instruments of service and shall be used only in connection with the project and site for which they are prepared. The use of this design and these construction documents for purposes other than the specific project named herein is strictly prohibited without expressed written consent of Onyx Creative.

Project No:	18894
Drawn By:	BO
Date	Issue
07/16/2021	Blk/ Permt
07/29/2021	Revision 1
08/27/2021	Revision 2
10/22/2021	Revision 3