

Sequence of Operation Matrix

System Operation - Petland at Summit Orchards		Alarm at FACP/Annunciator	Deactivate Alarm at FACP/Annunciator	Supervisory at FACP/annunciator	Deactivate Supervisory at FACP/annunciator	Trouble at FACP/Annunciator	Deactivate Trouble at FACP/Annunciator	Activate Fire Alarm Spkr/Strobes	De-activate Fire Alarm Spkr/Strobes	Activate Alarm to Central Station	Activate Trouble to Central Station	Activate Supervisory to Central Station
Duct Detector												
FACP Silence												
FACP Reset												
Fire Alarm Trouble Condition (Opens, Grounds, Shorts)												

Function of the FACP must be confirmed with the AHJ prior to programing FACP

Honeywell | Online Tools For Fire Version 2.0.14

PROJECT DETAILS

Project Name : Petland at Summit Orchards
Project Code :
Project Location : 464 NW Chipman Road,
Lee's Summit, Missouri, 64063

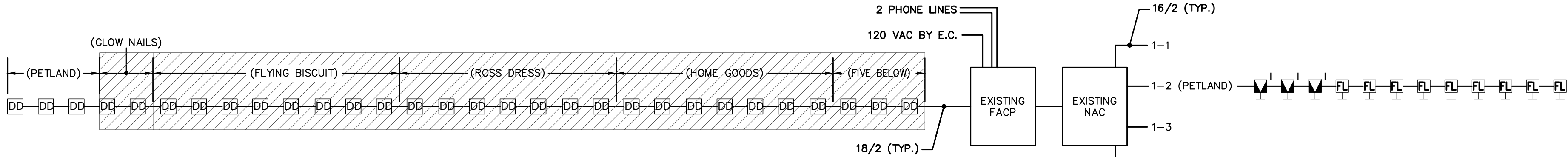
PREPARED BY

corby fisher
11240 Strang Line Road, Lenexa, Kansas,
United States, 66215

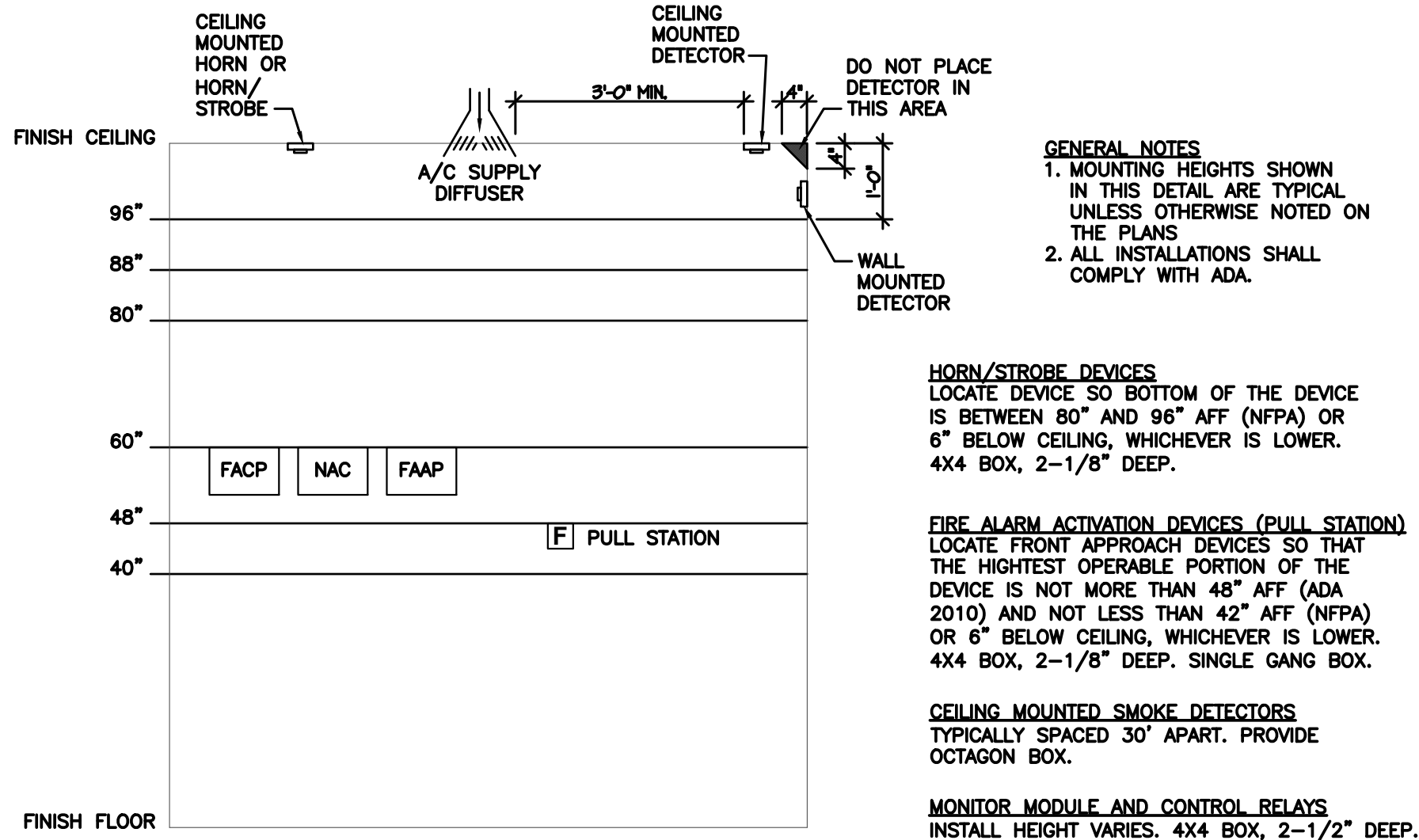
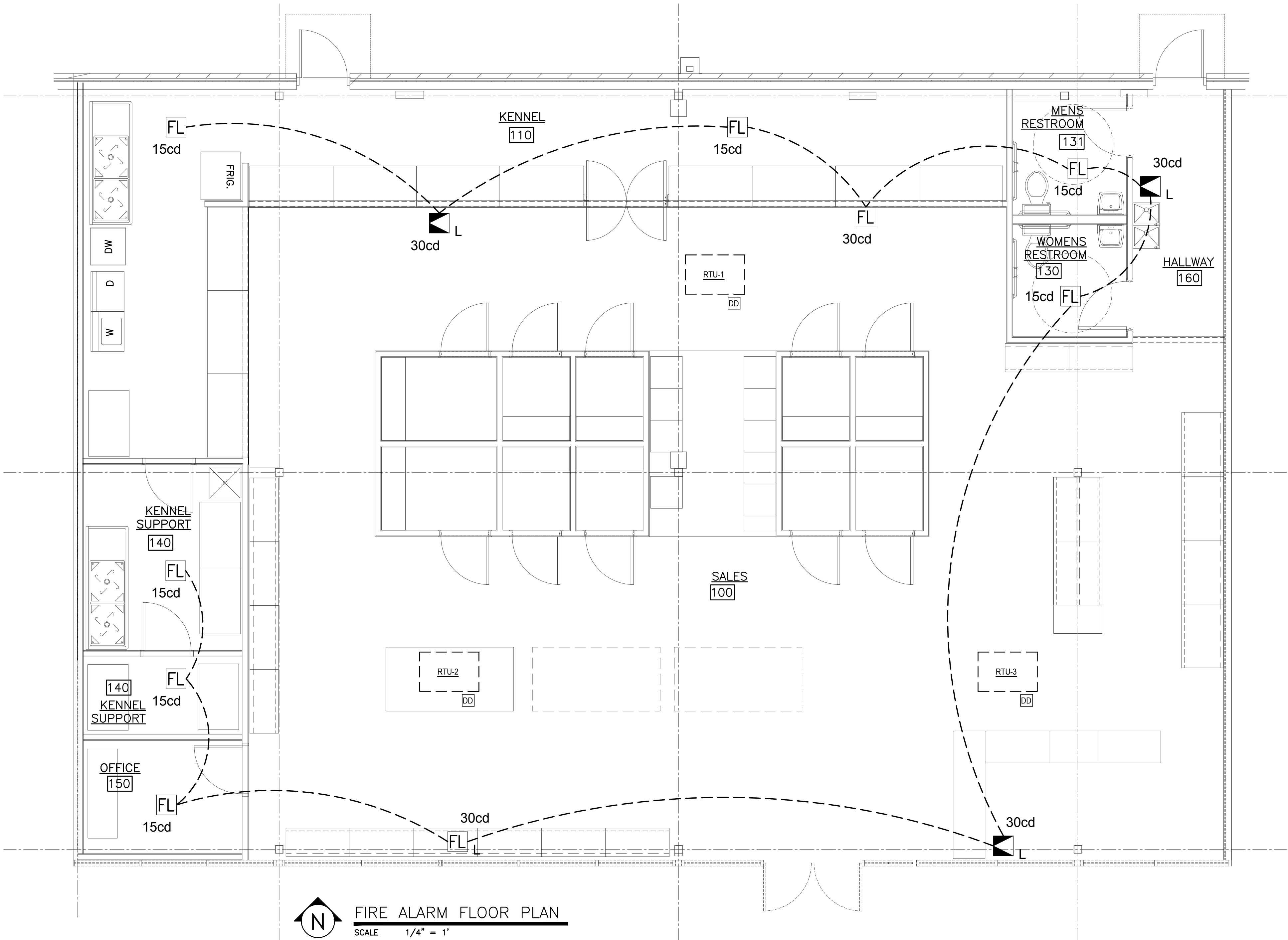
Voltage Drop Calculations

POWER SOURCE : NAC 1-2 MODEL NUMBER : HPFFS BRAND : HPP CLASS B 20.4 VOLTS DC POWER
CIRCUIT: NAC Circuit 2 3 Amps 16 AWG 12 DEVICES 19.93 % (0.598) AMPS USED 5.1 % (1.040) VOLTAGE DROP

#	MODEL	CANDELA	PATTERN	VOLUME	ZONE	CURRENT (amps)	DISTANCE FROM PREVIOUS DEVICE (FT)	12 AWG	14 AWG	16 AWG	18 AWG
1	SWL	15				0.043	55	20.268	20.190	20.066	19.808
2	P2WL	15	Temporal	High	Electromechanical	0.054	25	20.212	20.101	19.925	19.644
3	SWL	15				0.043	20	20.172	20.037	19.823	19.482
4	SWL	30				0.063	20	20.135	19.979	19.730	19.334
5	SWL	15				0.043	15	20.111	19.941	19.670	19.238
6	SWL	15				0.043	10	20.097	19.919	19.634	19.181
7	P2WL	30	Temporal	High	Electromechanical	0.074	40	20.047	19.840	19.508	18.981
8	SWL	30				0.063	40	20.009	19.780	19.412	18.829
9	SWL	15				0.043	15	19.999	19.764	19.386	18.787
10	SWL	15				0.043	10	19.994	19.756	19.373	18.766
11	SWL	15				0.043	10	19.991	19.751	19.364	18.752
12	SWL	15				0.043	10	19.989	19.748	19.360	18.745
Voltage Drop								0.411	0.652	1.040	1.655



FIRE ALARM RISER DIAGRAM



TYP. MTG. HEIGHTS DETAIL

BC PROJECT #: 21848
MISSOURI PE COA #2008003629

This drawing has been prepared by the Engineer, or under his supervision. This drawing is provided as an instrument of service by the Designer/Engineer and is intended for use on this project only. Pursuant to the Architectural Rights Copyright Protection Act of 1980, all drawings, specifications, plans and designs, including the overall form, arrangement and composition of spaces and elements appearing herein, constitute the original, copyrighted work of the Designer/Engineer. Any reproduction, use, or disclosure of information contained herein without prior written consent of the Engineer is strictly prohibited. © 2021 BC Engineers, Inc.

BC ENGINEERS
INCORPORATED

5720 Reeder Shawnee, Ks. 66203 (913)262-1772

SYMBOL LEGEND	
SYMB.	DESCRIPTION
FL	STROBE ONLY (WALL OR CLG. MOUNT)
L	COMBINATON HORN/STROBE (WALL OR CLG. MOUNT)
DD	DUCT DETECTOR
FACP	FIRE ALARM CONTROL PANEL
NAC	FIRE ALARM NOTIFICATION POWER SUPPLY

CUSTOMER:

PROJECT:
PETLAND AT SUMMIT ORCHARDS
464 CHIPMAN ROAD
LEE'S SUMMIT, MO 64063

SECURITY SOLUTIONS
FIRE & LIFE

11240 Strang Line Road Lenexa, Kansas 66215
(913) 262-1772
E-Mail: INFO@SECURITYSOLUTIONS20.COM

DRAWING APPROVALS

10/19/2021
REGISTERED PROFESSIONAL ENGINEER
STATE OF MISSOURI
DARIN T. SEIDEL
NUMBER PE-20090303

PROJECT NO.	REVISIONS				NOTE:
SCALE: AS NOTED					
DRAWN BY:		AP	10/15/2021		
ENGINEER:					
CHECK BY:		CF	10/15/2021		
DATE: 10/15/2021					
CAD FILE:					
DRAWING TITLE:					
FIRE ALARM FLOOR PLAN, RISER DIAGRAM, CALCS., SEQ. OF OPER., DTLs.					

DRAWING SHEET NO.
FA-101