



October 15, 2021

Mr. David Olson
Streets of West Pryor, LLC
7200 W 132nd Street, #150
Overland Park, Kansas 66213

Re: Initiation of Long-Term Monitoring Plan
Lots 7A (Area A) and 7C (Area B)
Mine Remediation at Streets of West Pryor
Lee's Summit, Missouri
Geotechnology Project No. J035637.02

Dear Mr. Olson,

Attached to this letter is the initial base survey for surface monitoring for the referenced lots. The initial survey was performed in general accordance with the *Revised Mine Remediation Plan* dated May 6, 2021. The survey was conducted by BHC, Inc. A discussion regarding Basis of Bearings is included as Note 1 on the Sheet.

* * * * *

If you have a question regarding this letter, or if we may be of additional service to you, please contact the undersigned.

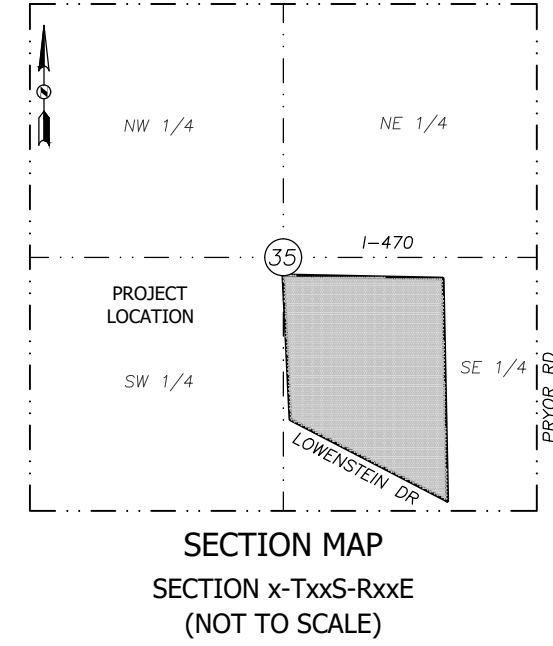
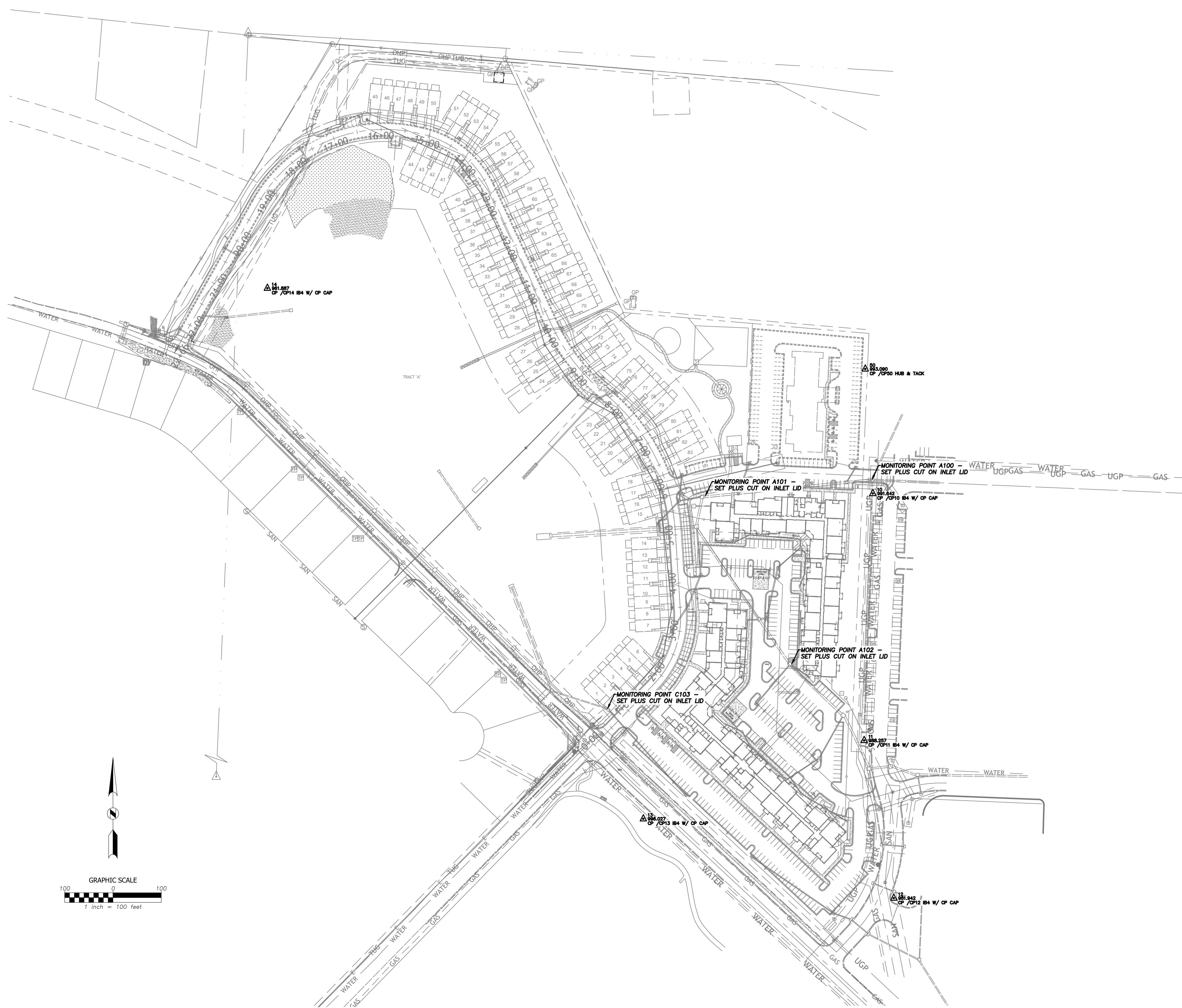
Respectfully submitted,

GEOTECHNOLOGY, LLC

Andrea Prince, P.G.
Senior Project Manager

ALP:MHM:alp\ljd

STREETS OF WEST PRYOR MONITORING EXHIBIT



- GENERAL NOTES
1. Basis of Bearings: Initial Monitoring control was derived from GPS Static data collected on several of the Monitoring Control Points and submitted to OPUS for data processing. The OPUS provided data was referenced to the Missouri State Plane Coordinate System, West Zone (NAD83). The coordinates derived from this OPUS solutions were then adjusted to ground using the CAF from the Final Plat of "Streets of West Pryor Lots 1 thru 14, Tracts "A", "B", "C", & "D". Using the CAF from the above mentioned plat allows the monitoring points to be on a similar datum to the proposed site design. The ground coordinates were scaled from zero using the CAF of 0.99990084.
 2. The monitoring control and the initial monitoring points were then traversed using a Trimble SX10 instrument and subsequently adjusted using MicroSurvey StarNet Version 9 software. A level run was run through control points 10 thru 13 to assist in establishing the initial monitoring control.
 3. Base Line Control Points were intentionally placed off of the site in order to avoid placing them over areas of the mine that are currently being remediated.
 4. This monitoring survey is based on field work completed on the date shown in the title block.
 5. Monitoring points are labeled to indicate which section of mine remediation zone that they are closest to and a point number to assist in the survey monitoring. Example A100 = "A" indicates the "A" remediation zone and "100" is the survey point used while monitoring.
 6. It has been indicated that some of the inlet lids will be moved during the progress of the construction. It has been requested that when the inlets are being adjusted that monitoring will be taken before and after the inlet has been adjusted in order to maintain a viable monitoring point that will be maintained through the monitoring term.

Project:		Streets of West Pryor Monitoring Exhibit	
Field Crew:		Lots 7A, 7B, and 7C	
Field Date:		Section 35, Township 48, Range 32	
Drawn By:		Lee's Summit, Jackson County, Missouri	
Issue Date:			
Sheet:		1 OF 1	
Client:		Monarch Acquisitions LLC	
		Dave Olson	
		P.O. Box 24302	
		Overlaon Park, KS 66283	
Description		Rev.	
Date		Checked	

CIVIL ENGINEERING / SURVEYING / UTILITIES
712 State Avenue, Kansas City, KS 66101
Phone: (913) 371-5300
BHC is a trademark of Burroughs & Company, P.A.