



## ARCHITECT'S SUPPLEMENTAL INSTRUCTIONS

---

Supplemental Instruction No.: THIRTY- SEVEN (037)

Date: 8/13/21

Project: THE PRINCETON

Owner: O'Reilly Development

To: O'Reilly Build

Project No.: 1811

Contract For: General Construction

Contract Dated:

---

The Work shall be carried out in accordance with the following supplemental instructions issued in accordance with the Contract Documents without change in Contract Sum or Contract Time. Proceeding with the Work in accordance with these instructions indicates your acknowledgment that there will be no change in the Contract Sum or Contract Time.

---

### Description:

1. Attached are enlarged site plan and elevations of the monument sign. The signage company is responsible for obtaining the signage permit. Logo, text, and colors for the signage will be provided by Arrow Senior Living.

Attachments: SD003, SD004

Issued: Scott Auman AIA NCARB  
Architect

Signed: \_\_\_\_\_

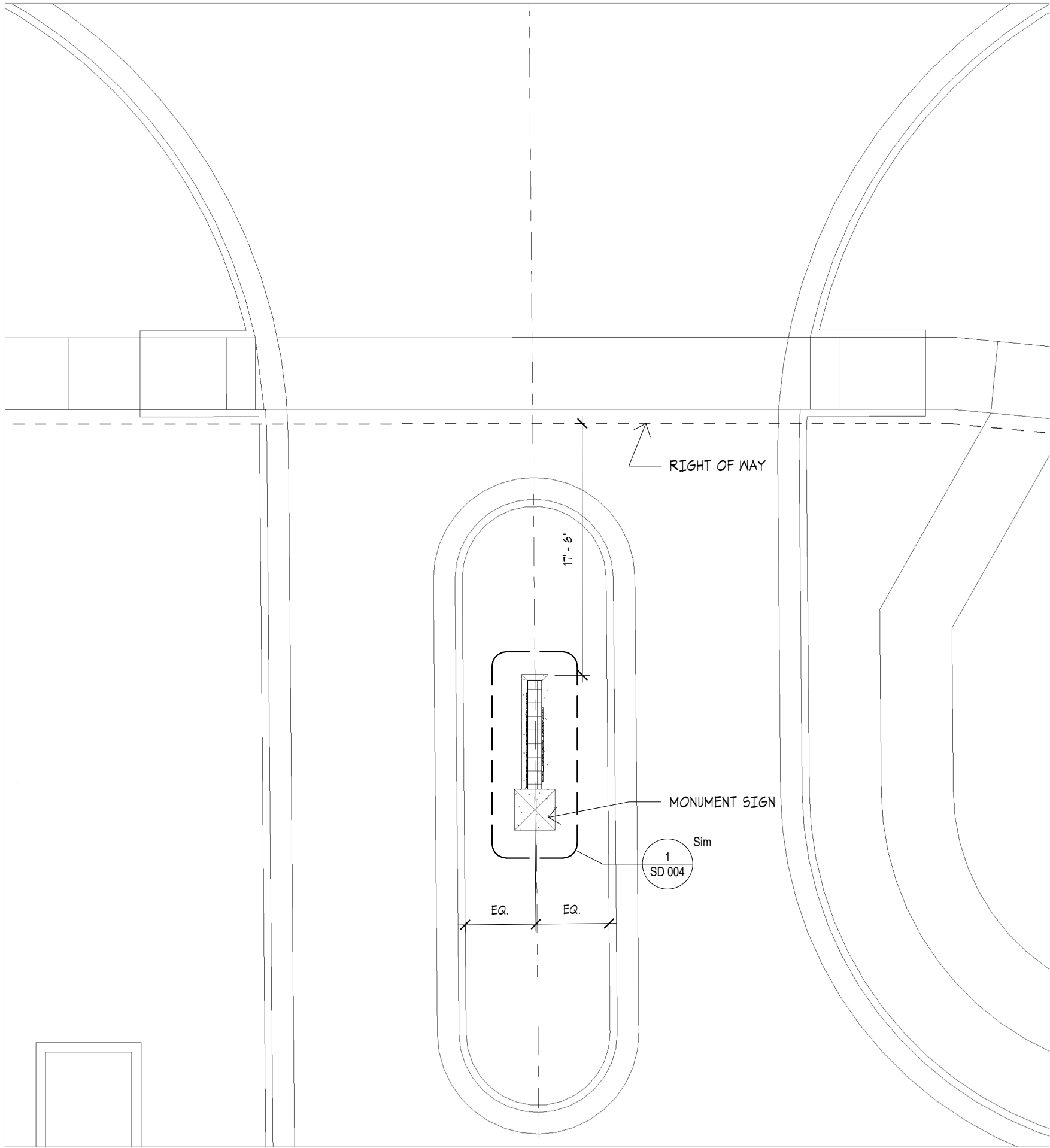
A handwritten signature in black ink, appearing to read "Scott Auman", is written over a horizontal line.

C:\Users\dtruskey\Documents\1811 LS SENIOR\_dtruskey\8YP6R.rvt  
8/13/2021 9:54:08 AM

1

# SITE PLAN - MONUMENT SIGN

1/8" = 1'-0"



LEE'S SUMMIT SENIOR COMMUNITY  
1701 S.E. OLDHAM PARKWAY  
LEE'S SUMMIT, JACKSON COUNTY, MISSOURI

STARK WILSON DUNCAN ARCHITECTS INC.  
315 NICHOLS ROAD STE 228 - KANSAS CITY, MO 64112 - T 816.531.1698 F 816.532.1978

REFERENCE SHEET SP1.1

8/13/2021

ISSUE DATE:  
6/14/2019

## SD 003

PROJECT NO.: 1811

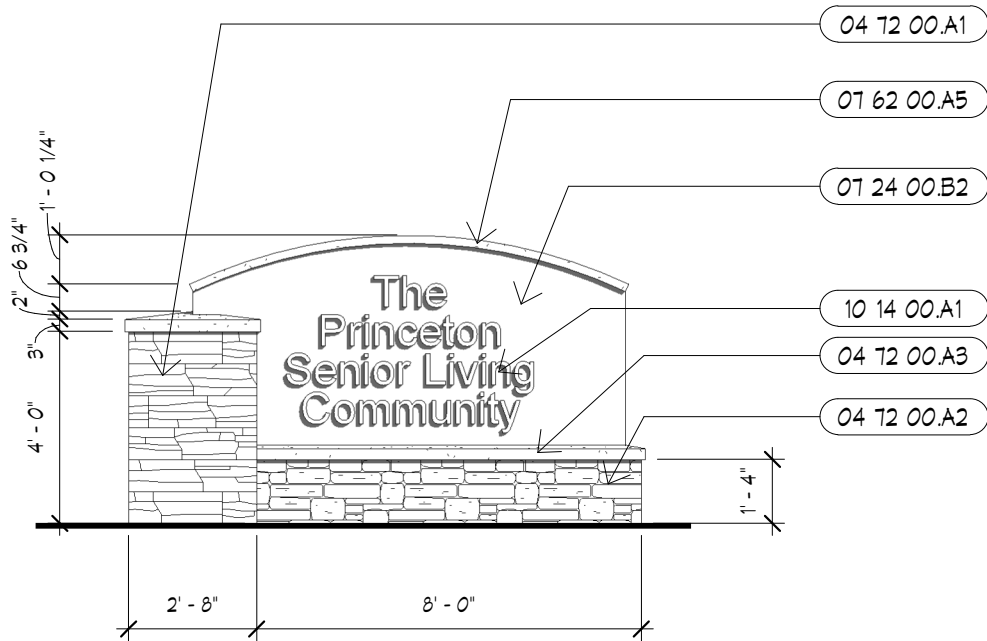
COPYRIGHT © 2015 SWD ARCHITECTS INC.

C:\Users\dtruskey\Documents\1811 LS SENIOR\_dtruskey8YP6R.rvt  
8/13/2021 9:50:49 AM

2

MONUMENT SIGN - ELEV

1/4" = 1'-0"

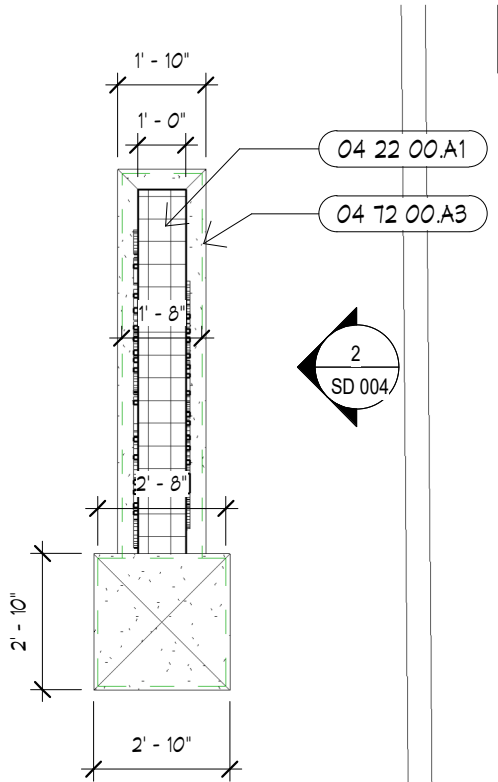


- NOTES:
1. LOGO AND TEXT WILL BE TYPICAL FOR BOTH SIDES. THIS WILL BE PROVIDED DURING SHOP DRAWING SUBMITTALS.
  2. SIGN CONTRACTOR WILL BE RESPONSIBLE FOR OBTAINING ALL PERMITS ASSOCIATED WITH THE MONUMENT SIGN.

1

MONUMENT SIGN - PLAN

1/4" = 1'-0"



KEYNOTES

NUMBER	DESCRIPTION
04 22 00.A1	8" REINFORCED CMU. RE: STRUCTURAL
04 12 00.A1	ARCHITECTURAL THIN STONE VENEER. TYPE 1 04 12 00
04 12 00.A2	ARCHITECTURAL THIN STONE VENEER. TYPE 2 04 12 00
04 12 00.A3	ARCHITECTURAL THIN STONE CAP. 04 12 00
07 24 00.B2	EIFS COATING ON ALL EXPOSED SURFACES.
07 62 00.A5	PRE FINISHED METAL CAP FLASHING. 07 62 00
10 14 00.A1	BUILDING SIGNAGE- TYPE 1. 10 14 26

SWD  
ARCHITECTS

EST 1935

LEE'S SUMMIT SENIOR COMMUNITY  
1701 SE. OLDHAM PARKWAY  
LEE'S SUMMIT, JACKSON COUNTY, MISSOURI

STARK WILSON DUNCAN ARCHITECTS INC.  
315 NICHOLS ROAD STE 228 - KANSAS CITY, MO 64112 - T 816.531.1698 F 816.532.1978

REFERENCE SHEET SP1.2

8/13/2021

ISSUE DATE:  
6/14/2019

SD 004

PROJECT NO.: 1811

COPYRIGHT © 2015 SWD ARCHITECTS INC.