

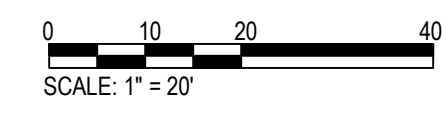
**LAYOUT NOTES:**

1. THE CONTRACTOR WILL DETERMINE THE EXACT LOCATION OF ALL EXISTING UTILITIES AND STRUCTURES BEFORE COMMENCING WORK. THE CONTRACTOR WILL CONDUCT HIS WORK SO AS TO PREVENT INTERRUPTION OF SERVICE OR DAMAGE TO THEM. THE CONTRACTOR AGREES TO BE FULLY RESPONSIBLE FOR ANY AND ALL DAMAGE WHICH MIGHT BE OCCASIONED BY THE CONTRACTOR'S FAILURE TO LOCATE AND PRESERVE ANY AND ALL EXISTING UTILITIES AND STRUCTURES.
2. ALL CURBS/RAMPS TO BE BUILT IN COMPLIANCE WITH FEDERAL ACCESSIBILITY STANDARDS.
3. PAVING DIMENSIONS ARE TO BACK OF CURB UNLESS OTHERWISE NOTED.
4. ALL WORK WILL BE IN ACCORDANCE WITH OSHA CODES AND STANDARDS. NOTHING INDICATED ON THESE DRAWINGS SHALL RELIEVE THE CONTRACTOR FROM COMPLYING WITH ANY APPROPRIATE SAFETY REGULATIONS.
5. VERIFY LAYOUT COORDINATES PRIOR TO CONSTRUCTION.
6. CONTRACTOR TO SUPPLY AND INSTALL ALL REQUIRED SLEEVES UNDER PAVING AND WALKS.
7. PLACE EXPANSION JOINTS AT VERTICAL ELEMENTS (BUILDING, COLUMNS, WALLS, BACK OF CURBS, ETC.) AND AT CHANGES IN GRADE AND DIRECTION AND APPROXIMATELY EVERY 30 LINEAR FEET.
8. WHERE NEW PAVEMENTS ARE CALLED FOR, PROVIDE AN EXPANSION JOINT AROUND ALL EXISTING UTILITIES, MANHOLES, POLES, LIGHTS, ETC.
9. SAWCUT JOINTS BETWEEN CRITICAL POINTS ARE TO BE EQUALLY SPACED, OR AS SHOWN ON DRAWINGS.
10. CONTRACTOR TO CONFIRM HORIZONTAL CONTROL POINTS IN THE FIELD. CONTRACTOR TO VERIFY HORIZONTAL CONTROL POINTS WITH HORIZONTAL COORDINATE POINTS.
11. ALL EXPOSED CONCRETE WALLS AND FOOTINGS TO HAVE A CONSISTENT RUBBED FINISH. CONTRACTOR TO PROVIDE MINIMUM 4 SQUARE FEET MOCK-UP FOR REVIEW AND APPROVAL.
12. CONTRACTOR TO PROVIDE MOCK-UP (4'x4') OF ALL PAVEMENT TYPES FOR REVIEW AND APPROVAL. ALL CONCRETE SIDEWALKS TO HAVE BROOM FINISH, UNLESS OTHERWISE INDICATED. MOCK-UP TO REMAIN ON SITE THROUGHOUT CONSTRUCTION.
13. ALL EXTERIOR GROUND OR BUILDING MOUNTED EQUIPMENT, INCLUDING BUT NOT LIMITED TO MECHANICAL EQUIPMENT, UTILITY METER BANKS, AND COOLERS, SHALL BE SCREENED FROM PUBLIC VIEW WITH LANDSCAPING OR AN ARCHITECTURAL TREATMENT COMPATIBLE WITH THE BUILDING ARCHITECTURE.
14. ALL ON-SITE WIRING AND CABLES SHALL BE PLACED UNDERGROUND.

16. ABBREVIATIONS:  
 TC = TOP OF CONCRETE  
 TD = TOP OF TRENCH DRAIN  
 TW = TOP OF WALL  
 GR = FINISH GRADE  
 FL = FLOW LINE  
 HP = HIGH POINT

- 1 STANDARD GRAY CONCRETE WALK WITH BROOM FINISH, RE: CIVIL
- 2 DECORATIVE CONCRETE WALK WITH STANDARD BROOM FINISH, RE: CIVIL
- 3 PLANTING AREA, SEE LANDSCAPE PLAN
- 4 SOD, SEE LANDSCAPE PLAN
- 5 BED EDGER RE: 6.1.4.1
- 6 FLAGPOLE RE: 6.1.4.1
- 7 SEATWALL RE: 7.1.4.1
- 8 WASTE RECEPTACLE, RE: SPECS
- 9 BIKE RACK RE: 6.1.4.1
- 10 MONUMENT SIGN RE: 1.1.3.1
- 11 RETAINING WALL WITH SLEEVE-IT SYSTEMS AND 42" HEIGHT GUARDRAIL SYSTEM, RE: 6.4.1.1
- 12 DECORATIVE BOLLARD RE: 9.1.4.1
- 13 BOLLARD RE: 9.1.4.1
- 14 HEAVY-DUTY PAVEMENT, RE: CIVIL
- 15 BUILDING MOWSTRIP RE: 11.1.2.1
- 16 6" HT. ORNAMENTAL FENCE WITH MOWSTRIP, RE: 7.1.4.1
- 17 6" HT. ORNAMENTAL GATE RE: 8.1.4.1
- 18 6" HT. PVC COATED CHAIN LINK FENCE, RE: 4.1.4.1
- 19 6" HT. PVC COATED CHAIN LINK GATE, RE: 6.1.4.1
- 20 DECORATIVE GUARDRAIL SIGN TO: 1.1.1.1
- 21 STAIRS WITH HANDRAILS, RE: 15.1.4.1
- 22 RAMP WITH HANDRAILS, RE: 1.1.4.1
- 23 6" HT. ORNAMENTAL GUARDRAIL SIGN TO: 7.1.4.1
- 24 6" HT. CHAINLINK GUARDRAIL SIGN TO: 4.1.4.1
- 25 FOOTBALL FIELD SCOREBOARD, RE: SPECS
- 26 FOOTBALL FIELD GOALPOST, RE: 1.1.4.1
- 27 8" BALLFIELD CHAINLINK FENCE @ RETAINING WALL, RE: 10.1.4.1
- 28 LONG/TRIPLE SAND PIT, RE: 2.1.4.1
- 29 LONG/TRIPLE RUNWAY, RE: 3.1.4.1
- 30 DISCUS PAD AND CAGE, RE: 4.1.4.1
- 31 SHOT-PUT, RE: 4.1.4.1
- 32 RUNNING TRACK WITH SURFACING, RE: 6.1.4.1
- 33 TRACK SLOT DRAIN, RE: 6.1.4.1
- 34 TRACK TRENCH DRAIN, RE: 6.1.4.1
- 35 TRACK CATCH BASIN, RE: 6.1.4.1
- 36 TRACK RADIUS MONUMENT SIGN, RE: 7.1.4.1
- 37 CONCRETE FIELD CURB SIGN TO: 6.1.4.1
- 38 LONG/TRIPLE TAKE-OFF BOARD, RE: SPECS
- 39 32" HT. PVC COATED CHAIN LINK BACKSTOP WITH MOWSTRIP, RE: 6.1.4.1
- 40 8" HT. PVC COATED CHAINLINK OUTFIELD FENCE WITH PADDED TOP RAIL AND MOWSTRIP AND NAILER BOARD, RE: 3.1.4.1
- 41 SYNTHETIC TURF - OUTFIELD, RE: 11.1.4.1
- 42 SYNTHETIC TURF - INFIELD, RE: 11.1.4.1
- 43 SYNTHETIC TURF - WARNING TRACK, RE: 11.1.4.1
- 44 BASE WITH SLEEVE (FOR SYNTHETIC TURF), RE: SPECS
- 45 HOME PLATE WITH SLEEVE (FOR SYNTHETIC TURF), RE: 6.1.4.1
- 46 PANEL DRAIN, RE: 12.1.4.1
- 47 COLLECTOR PIPE, RE: 11.1.4.1
- 48 CLEAN-OUT WITH CAP, RE: 14.1.4.1
- 49 8" HT. PVC COATED CHAINLINK GATE, RE: 5.1.4.1
- 50 FLY-ARC TRANSITION CURB, RE: 15.1.4.1
- 51 NATURAL INFIELD FINES, RE: SPECS
- 52 NATURAL WARNING TRACK FINES, RE: 3.1.4.1
- 53 BASE WITH SLEEVE (FOR NATURAL TURF), RE: SPECS
- 54 HOME PLATE WITH SLEEVE (FOR NATURAL TURF), RE: 10.1.4.1
- 55 SOFTBALL FOUL POLE SIGN TO: 4.1.4.1
- 56 BASEBALL/SOFTBALL SCOREBOARD 1, RE: SPECS
- 57 SPORTSFIELD LIGHTS, RE: ELEC
- 58 PORTABLE PITCHING MOUND, RE: SPECS
- 59 PORTABLE BULLPEN MOUND, RE: SPECS
- 60 SURFACE MOUNTED GUARDRAIL, RE: 2.1.4.1
- 61 BLEACHER, RE: 1.1.4.1
- 62 8" HT. PVC COATED CHAINLINK FENCE WITH MOWSTRIP, RE: 5.1.4.1
- 63 4" HT. PVC COATED CHAINLINK FENCE WITH MOWSTRIP, RE: 5.1.4.1
- 64 4" HT. PVC COATED CHAINLINK GATE, RE: 5.1.4.1

1 BASE BID - NATURAL NW FIELD LAYOUT  
 L1.1 SCALE: 1" = 20'-0"



KEYNOTE LEGEND  
 SCALE: 18" = 1'-0"



B:\M\_3607\13-20102-00\_Lee's Summit Middle School\_413-20102-00\_Lee's Summit Middle School\_4\_L1\_2020.rvt  
 5/10/2021 12:49:32 PM