

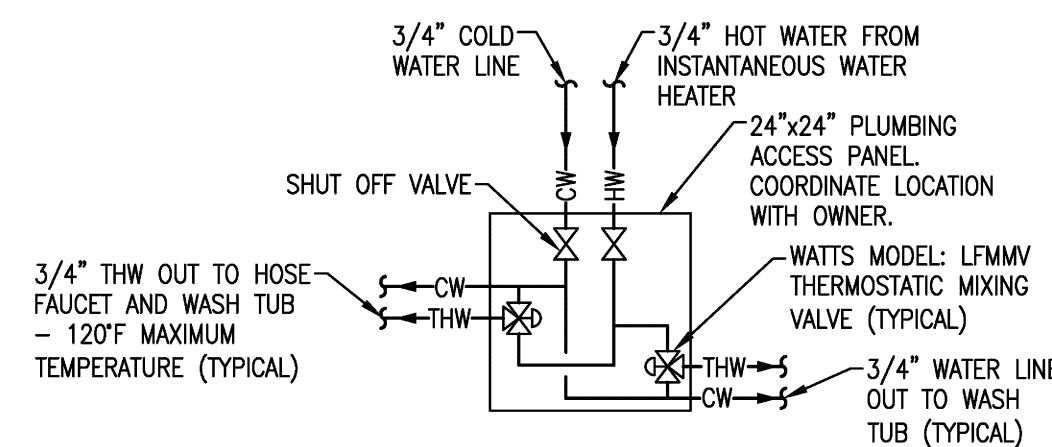
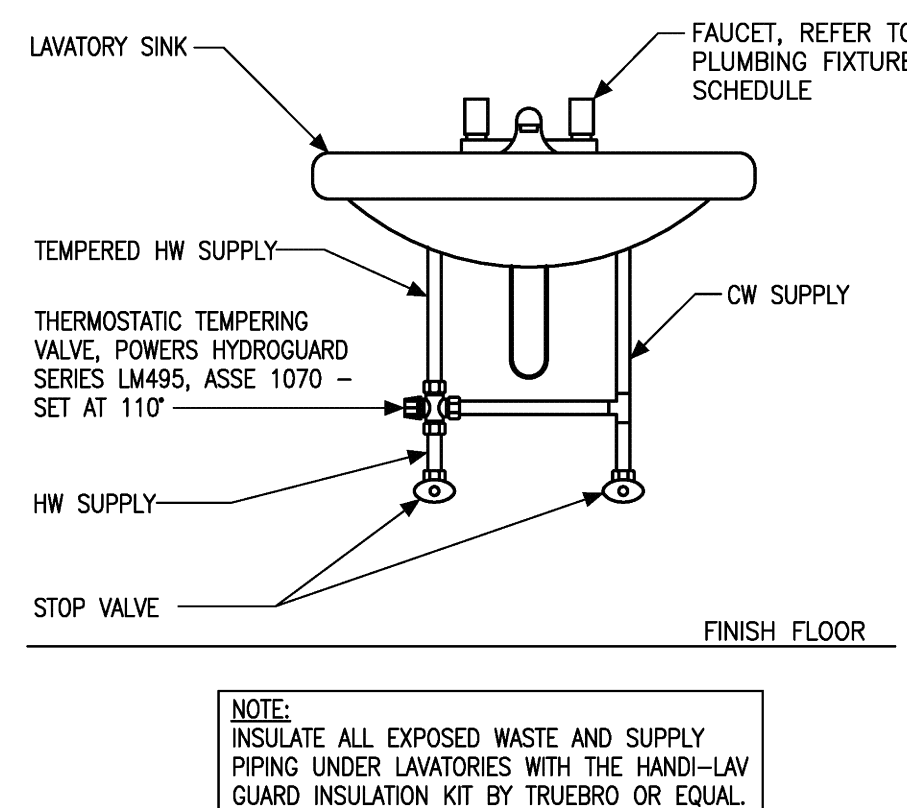
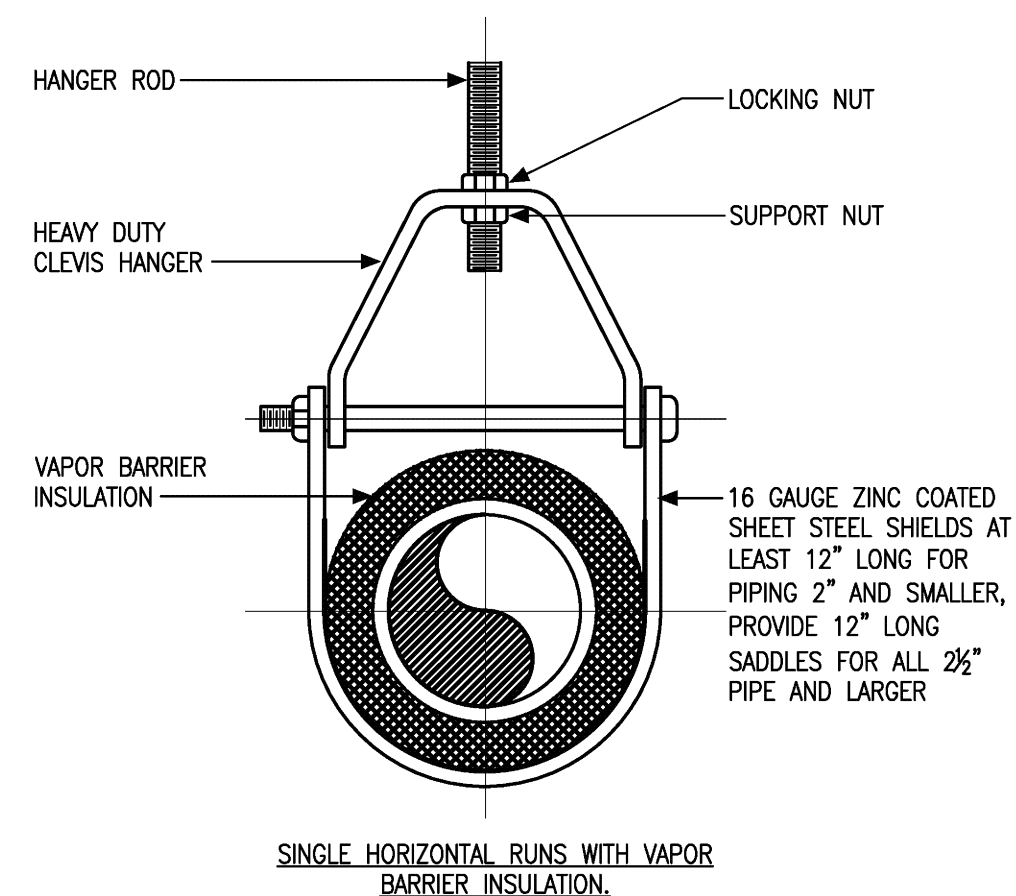
PLUMBING SYMBOLS/ABBREVIATION LEGEND			
SYMBOL	DESCRIPTION	ABBREVIATION	DESCRIPTION
	DOMESTIC HOT WATER	AD	ACCESS DOOR
	DOMESTIC COLD WATER	A.F.F.	ABOVE FINISH FLOOR
	SANITARY VENT	A.F.G.	ABOVE FINISH GRADE
	SANITARY SEWER	C.T.E.	CONNECT TO EXISTING
	NATURAL GAS	DS	DOWNSPOUT
	SHUT OFF VALVE	(E)	EXISTING
	UNION	FCO	FLOOR CLEANOUT
	END OF CONTRACT, CONNECT TO EXISTING	FD-?	FLOOR DRAIN
	GAS SHUT OFF VALVE	FFC	FIRE PROTECTION CONTRACTOR
	WATER METER	GC	GENERAL CONTRACTOR
	PIPE DROP	LAV-?	LAVATORY
	PIPE RISE	PC	PLUMBING CONTRACTOR
	PIPE CONNECTION FROM BOTTOM	SAN	SANITARY
	PIPE CAP	WCO	WALL CLEANOUT
	PIPE BREAK	WC-?	WATER CLOSET
NOTE: NOT ALL SYMBOLS OR ABBREVIATIONS MAY APPLY			

PLUMBING PIPING SCHEDULE  
REFER TO SPECIFICATIONS SECTION 15145 ON SHEET MP1.0 FOR MORE INFO.

SANITARY SEWER AND VENT PIPING, ABOVE GRADE

- A. CAST IRON PIPE: HUBLESS, SERVICE WEIGHT.
1. FITTINGS: CAST IRON.
2. JOINTS: NEOPRENE GASKETS AND STAINLESS STEEL CLAMP-AND-SHIELD ASSEMBLIES

- A. COPPER TUBE: TYPE L (B), DRAWN (H).
    - 1. FITTINGS: CAST COPPER ALLOY OR WROUGHT COPPER AND BRONZE.
    - 2. JOINTS: ALLOY SN65 SOLDER.
  - B. CROSS-LINKED POLYETHYLENE PIPE: ASTM F876 OR ASTM F877.
    - 1. MANUFACTURERS:
      - a. ZURN INDUSTRIES, LLC.
      - b. VIEGA LLC.
    - 2. PPI TR-4 PRESSURE DESIGN BASIS:
      - a. 100 PSIG AT MAXIMUM 180 DEGREES F.
    - 3. FITTINGS: BRASS AND COPPER.
    - 4. JOINTS: MECHANICAL COMPRESSION FITTINGS
- NATURAL GAS PIPING, ABOVE GRADE
- B. STEEL PIPE: SCHEDULE 40 BLACK.
    - 1. FITTINGS: MALLEABLE IRON, OR WROUGHT STEEL WELDING TYPE.
    - 2. JOINTS: NFPA 54, THREADED OR WELDED.



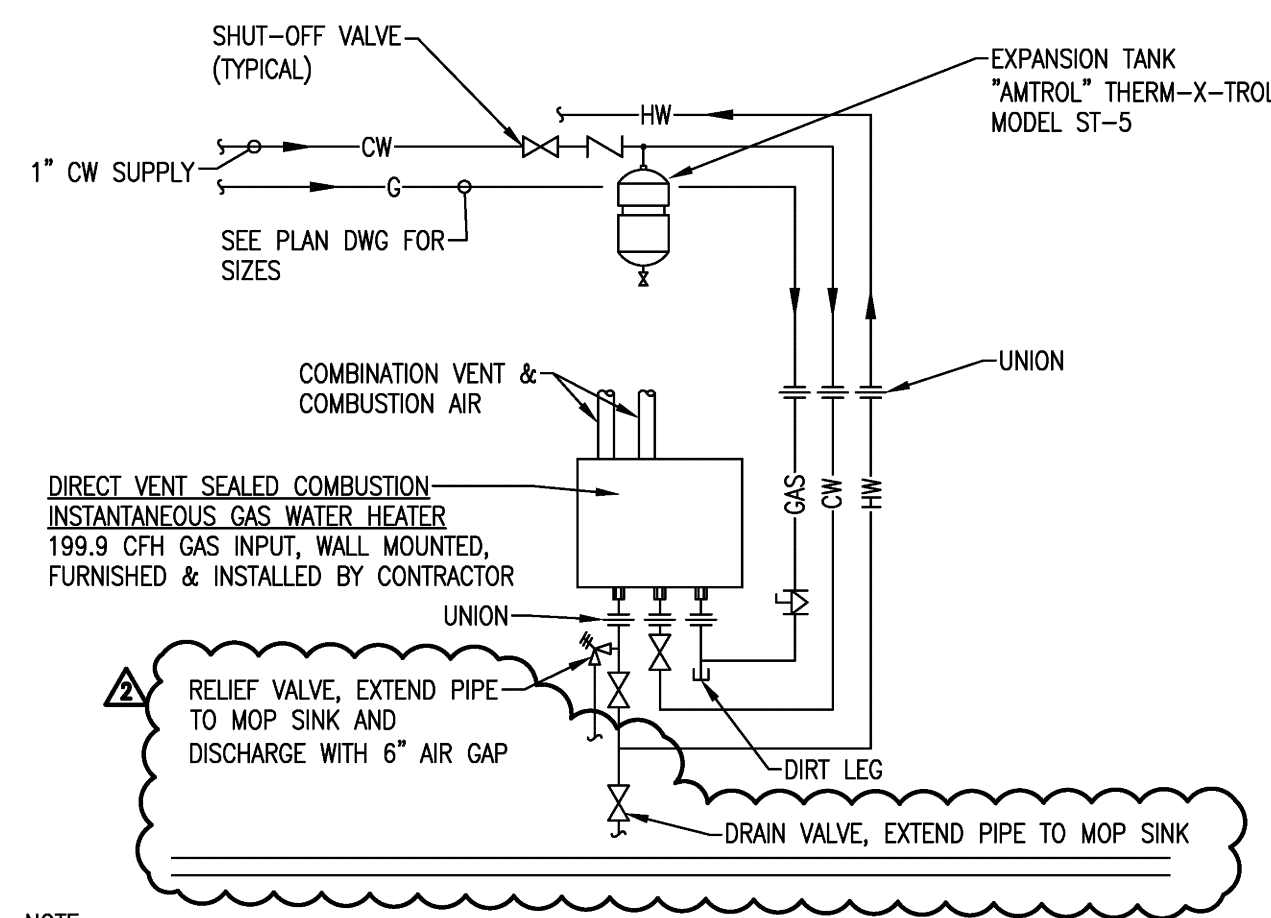
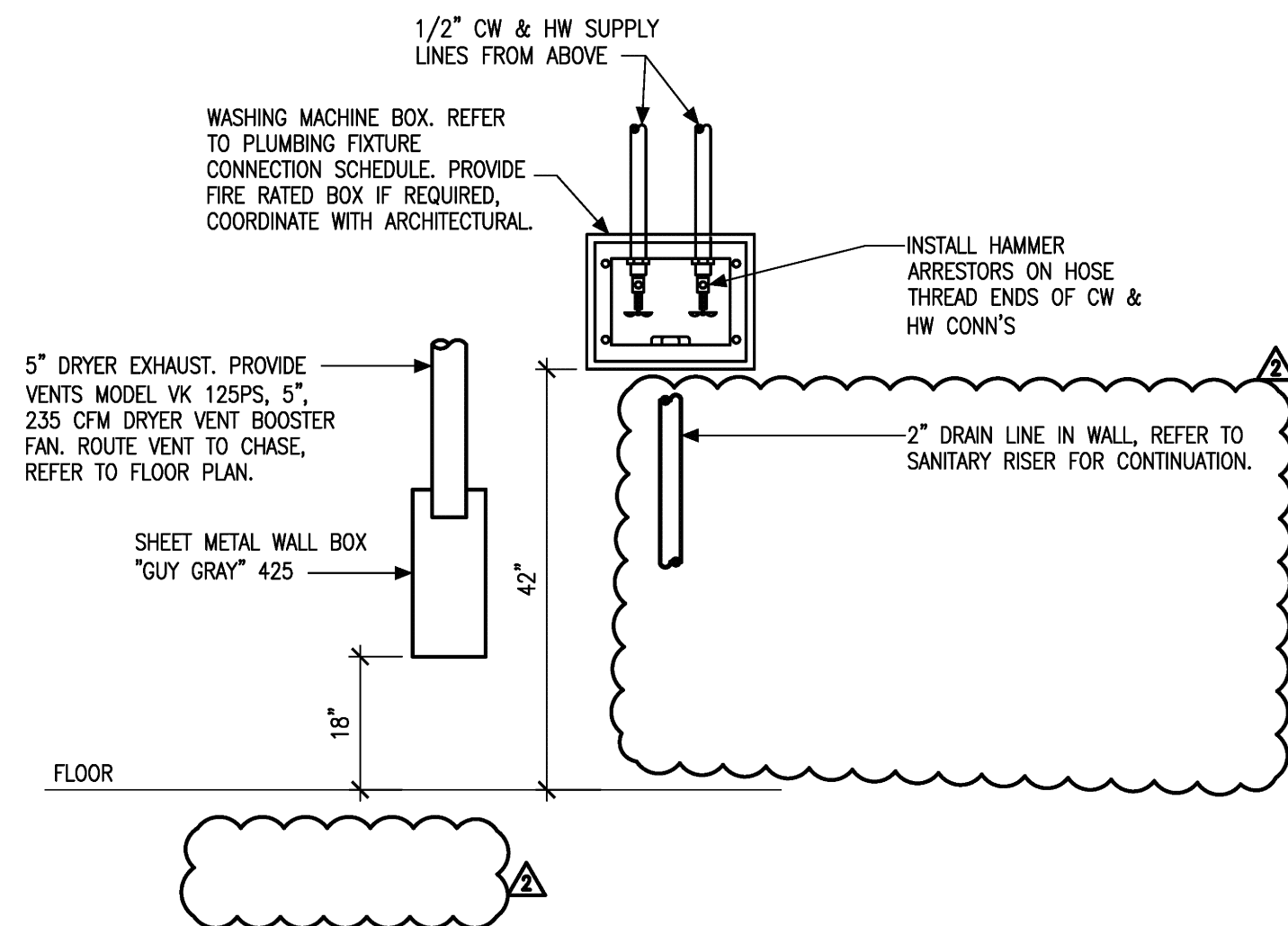
INSTANTANEOUS WATER HEATER SCHEDULE							
MARK	MANUFACTURER	MODEL NO.	GPM @ 45° RISE MAX	BTUH INPUT	VOLTAGE	WATER/GAS CONNECTIONS	NOTES
IWH-1	RHEEM	RTGH-95DVLN-2	8.5	199,900	120/1/60	3/4"	1,2

**NOTES:**

1. PROVIDE WITH CONCENTRIC VENT KIT FOR TERMINATION ON ROOF. ROUTE INTAKE AND VENT PIPING UP CHASE TO ROOF, VERIFY CLEARANCE REQUIREMENTS FROM EXISTING VENT/FLUE PIPING ON ROOF. SIZE PIPING PER MANUFACTURER'S RECOMMENDATIONS FOR REQUIRED LENGTH.
2. NO SUBSTITUTIONS

PLUMBING FIXTURE CONNECTION SCHEDULE												
MARK	ITEM	MAKE	NAME	MODEL	TRIM	TRAP	STOPS	CONNECTIONS				REMARKS
								WASTE	VENT	HW	CW	
LAV-1H	LAVATORY	AMERICAN STANDARD	LUCERNE	0355.012 4" CENTERS	MONTERREY (0.5 GPM)	NOTE #3	NOTE #4	1-1/2"	1-1/2"	1/2"	1/2"	WITH FLOOR MOUNTED CONCEALED ARM WALL CARRIER, FAUCET TO BE 5500.175 WITH WRIST HANDLES, SEE NOTES #7 & #9
WC-1H	WATER CLOSET	KOHLER	HIGHLINE 1.28 GPF	K-3999	-	INTEGRAL	3/8" ANGLE	4"	2"	-	1/2"	FLOOR MOUNTED, FLUSH TANK, WITH K-4731-C-O OPEN FRONT ELONGATED SEAT WITH CHECK HINGE. REFER TO NOTES #7 & #8. COLOR SHALL BE WHITE. PROVIDE WITH TANK COVER LOCKS.
MB-1	JANITOR'S SINK	FLORESTONE	TERRAZZO 24x24x12	MODEL #91	CENTRAL BRASS	3"	1/2" VALVES	3"	1-1/2"	3/4"	3/4"	SERVICE SINK FAUCET TO BE CENTRAL BRASS #0054-YELSRC-Q REFER TO NOTE #6
FD-1	FLOOR DRAIN	WATTS	SQUARE FLOOR DRAIN	MODEL #FD-100-M	NICKEL BRONZE	3"	-	3"	1-1/2"	-	-	PROVIDE 6"x6" FLOOR DRAIN.
TD-1	TRENCH DRAIN	NOBLE COMPANY	FREESTYLE LINEAR DRAIN	FD-100-M	PYRAMID STRAINER	2"	-	2"	1-1/2"	-	-	PVC CHANNEL, 316 SS GRATE, PROVIDE WITH 2" BOTTOM DISCHARGE, AND PRE-STRAINER.
WT-1	PET WASH TUB	FOREVER STAINLESS STEEL	48" WASH TUB	W48HT-LH	STAINLESS STEEL	1-1/2"	-	1-1/2"	1-1/2"	3/4"	3/4"	PROVIDE WITH PERFORATED HAIR CATCHING DRAIN SYSTEM (LH). PROVIDE WITH QUALITY FIXTURE PACKAGE.
WT-2	PET WASH TUB	FOREVER STAINLESS STEEL	60" WASH TUB	W60HTY-RH	STAINLESS STEEL	1-1/2"	-	1-1/2"	1-1/2"	3/4"	3/4"	PROVIDE WITH PERFORATED HAIR CATCHING DRAIN SYSTEM (RH). PROVIDE WITH QUALITY FIXTURE PACKAGE.
WM-1	WASHING MACHINE BOX	SIoux CHIEF	OXBOX	696-G230	ABS	-	-	2"	1-1/2"	1/2"	1/2"	OWNER TO PROVIDE WASHING MACHINE. WASTE AND VENT SIZES REFER TO WASHING MACHINE.
WCO	WALL CLEAN OUT	J.R. SMITH	-	4402 SERIES	STAINLESS STEEL	-	-	-	-	-	-	CAST IRON BODY
HF-1	HOSE FAUCET	CENTRAL BRASS	SERVICE FAUCET	0054-YELSRC-Q	-	-	1/2" VALVES	-	-	3/4"	3/4"	PROVIDE 20' HOSE AND NOZZLE, SEE NOTE 9.
TPV-1	TRAP PRIMER	PRECISION PRODUCTS	-	P2-500	-	-	-	-	-	-	1/2"	PRESSURE ACTIVATED TRAP PRIMER, BRASS CONSTRUCTION, ADJUSTMENT FOR VARIABLE PRESSURES. INSTALL TRAP PRIMER A MINIMUM OF 12" ABOVE THE TRAP BEING SERVED, PROVIDE AIR GAP FITTING WITH 1/2" MALE IPT INLET FITTING AND 1/2" FEMALE OUTLET FITTING, ONE TRAP APPLICATION
EW-1	ELECTRIC WATER COOLER	HALSEY TAYLOR	-	HAC8BLPV-WF	-	INTEGRAL	-	1-1/2"	1-1/2"	-	1/2"	WALL HUNG, "BI-LEVEL", 8.0 GPH, FILTERED, ADA, 115V, 4.5 FLA, 3/70 RATED WATTS, PLATINUM VINYL FINISH

- NOTES:
1. INSTALL SERVICE, SHUTOFF & CHECK VALVES, COCKS, STOPS, AIR CUSHIONS, VACUUM BREAKERS, AND SAFETY DEVICES WHERE REQUIRED BY CODE, SPECIFICATIONS, OR DRAWINGS.
  2. ALL FIXTURES IN WHITE UNLESS NOTED.
  3. EXPOSED P-TRAPS TO BE 1/2" O.A. CHROME PLATE WITH CLEANOUT AND ESCUTCHEON PLATE.
  4. STOPS TO BE CHROME PLATED 1/2" ANGLE VALVE WITH CHROME PLATED 12" LONG, 1/2" O.D. FLEXIBLE RISER AND ESCUTCHEON PLATE.
  5. ALL DRAINS AND WATER SUPPLY PIPING TO LAVATORIES TO BE INSULATED WITH "HANDI LAV-GUARD" INSULATION KIT BY TRUEBORG.
  6. WITH FLORESTONE HOSE AND BRACKET, MOP HOOK, BUMPER GARD AND 12" HIGH STAINLESS STEEL WALL GUARD. SINK TO BE MOUNTED FLUSH WITH WALLS AND SILICONE SEALANT APPLIED WHERE SINK MEETS WALL.
  7. AN "H" AT THE FIXTURE DESIGNATION INDICATES A HANDICAPPED FIXTURE.
  8. FLUSH HANDLES FOR ADA FIXTURES SHALL BE MOUNTED ON WIDE SIDE OF TOILET AREA.
  9. INSTALL WATS LVSUB-B TEMPERING VALVE. SET AT 110°.



1. WATER HEATER INSTALLATION TO COMPLY WITH STATE CODES AND LOCAL AUTHORITIES