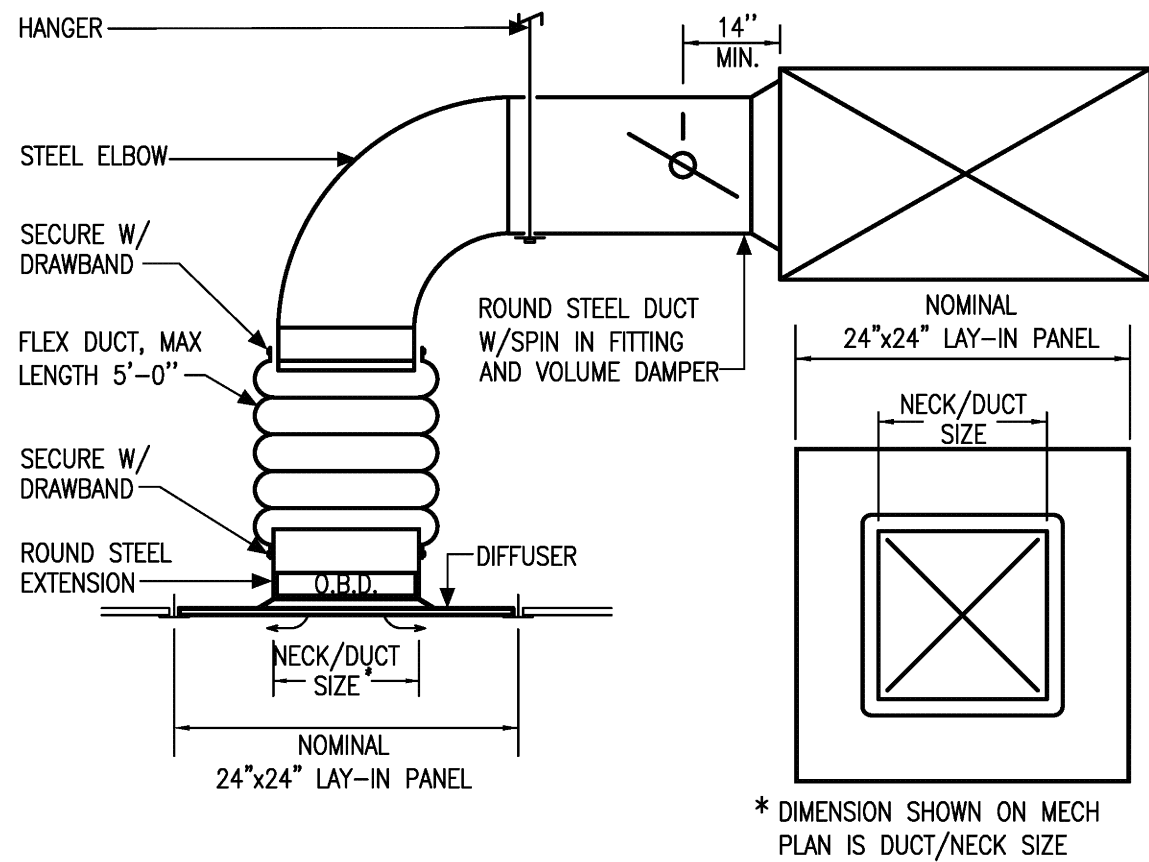
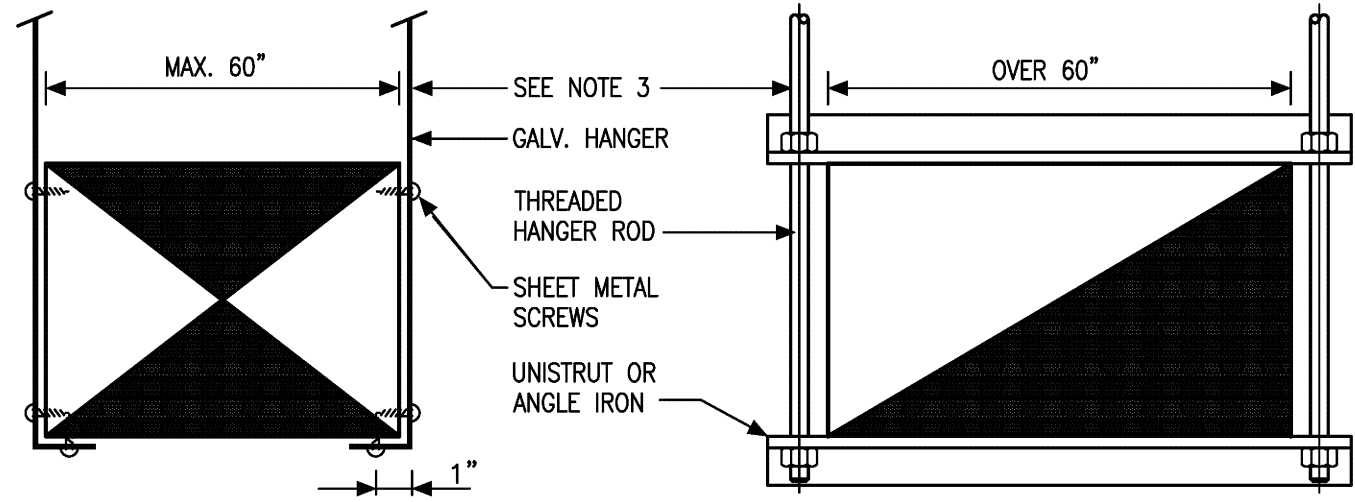


KTG KansasCity, MO
Drawn By: Andrew Blomach
Date: 08/27/2021
Project: 18804
Sheet: M2.0

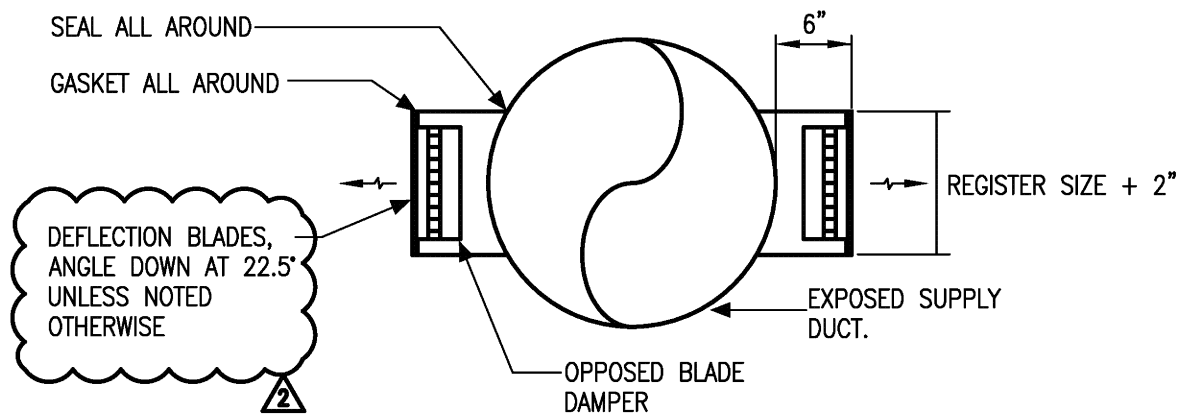


3 | LAY-IN DIFFUSER/GRILLE DETAIL
N.T.S.



- NOTES:
1. ON DUCTS OVER 48" WIDE, BOTTOM SHALL BE BRACED BY ANGLE. FOR CROSS SECTION AREA MORE THAN 8 SQ FT, DUCT SHALL BE BRACED BY ANGLES ON ALL FOUR SIDES.
 2. CUTTING AND PATCHING SHALL BE LIMITED TO A MINIMUM AS REQUIRED FOR PROPER INSTALLATION.
 3. SUPPORTS SHALL BE SPACED AND SIZED AS PER SMACNA.

2 | DUCT HANGER SUPPORT
N.T.S.



1 | SUPPLY REGISTER MOUNTING DETAIL
N.T.S.

MECHANICAL SYMBOL/ABBREVIATION LEGEND			
SYMBOL	DESCRIPTION	ABBREVIATION	DESCRIPTION
	HUMIDISTAT	AD	ACCESS DOOR
	TEMPERATURE SENSOR	AL	ACOUSTICAL LINING
	THERMOSTAT	CC	COOLING COIL
	REMOTE TEST SWITCH	CD	CONDENSATE DRAIN
	DUCT SMOKE DETECTOR	DDC	DIRECT DIGITAL CONTROL
	END OF CONTRACT, CONNECT TO EXISTING	(E)	EXISTING
	FIRE DAMPER	EG	EXHAUST GRILLE
	SMOKE DAMPER	EAT	ENTERING AIR TEMPERATURE
	MOTORIZED DAMPER	EF	EXHAUST FAN
	VOLUME DAMPER	ETR	EXISTING TO REMAIN
	CEILING DIFFUSER	FD	FIRE DAMPER
	RETURN GRILLE	FPC	FIRE PROTECTION CONTRACTOR
	EXHAUST GRILLE	GC	GENERAL CONTRACTOR
	AIRFLOW DIRECTION	LAT	LEAVING AIR TEMPERATURE
	LOUVERED DOOR	MCA	MINIMUM CIRCUIT AMPACITY
	UNDERCUT DOOR	MOD	MOTOR OPERATED DAMPER
	SUPPLY	MOCP	MAXIMUM OVERLOAD PROTECTION
	RETURN/O.A.	OA	OUTSIDE AIR
	EXHAUST	RA	RETURN AIR
	TURNING VANES	RG	RETURN GRILLE
		SA	SUPPLY AIR
		SR	SUPPLY REGISTER
		VD	MANUAL VOLUME DAMPER
		TG	TRANSFER GRILLE

*SOME SYMBOLS OR ABBREVIATIONS MAY NOT BE USED ON THIS PROJECT

REGISTERS, DIFFUSERS, AND GRILLES						
MARK	MANUFACTURER	MODEL	MATERIAL	SIZE	MAX NC	NOTES
CD-1	TITUS	TMS-AA	ALUMINUM	12"x12"	25	1,2,3,4,5
RG-1	TITUS	350FL	ALUMINUM	SEE PLAN	25	4,5
SR-1	TITUS	301FL	ALUMINUM	SEE PLAN	25	1,4,5
EG-1	TITUS	350FL	ALUMINUM	SEE PLAN	25	1,3,4,5
EG-2	TITUS	350FL	ALUMINUM	12"x12"	25	2,3,4,5
EG-3	TITUS	350FL	ALUMINUM	24"x24"	25	2,3,4,5
NOTES: 1. INTEGRAL OPPOSED BLADE DAMPER 2. PROVIDE SQUARE TO ROUND NECK TRANSITIONS WHERE ROUND DUCTS SERVE SQUARE NECK DIFFUSERS OR GRILLES. 3. PROVIDE VOLUME DAMPER IN BRANCH DUCT RUNOUT WHERE CEILING IS ACCESSIBLE. O.B. DAMPER BEHIND GRILLE OR DIFFUSER IS REQUIRED WHERE DUCT BRANCH IS INACCESSIBLE. 4. PAINT INTERIOR OF DUCTWORK BEHIND GRILLES AND DIFFUSERS FLAT BLACK IF VISIBLE THROUGH DEVICE. 5. CONTRACTOR SHALL CONFIRM EXACT LOCATION OF GRILLES WITH GENERAL CONTRACTOR, TENANT, & ARCHITECT PRIOR TO ANY WORK. GRILLES SHALL BE WHITE.						

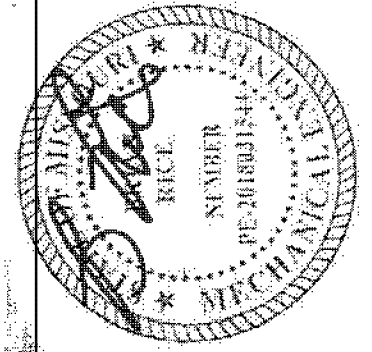
EXHAUST FAN SCHEDULE										
MARK	AREA SERVED	MANUFACTURER	MODEL	TOTAL CFM	E.S.P. *WG	MOTOR HP	POWER V/PH	SONES	WEIGHT LBS	NOTES
EF-1	DOG WASH ROOMS	COOK	90SQN17D (VF)	250	0.5	1/8	115/1	6.5	70	1,3
EF-2	RESTROOM AND MOP SINK	COOK	90SQN17D (VF)	225	0.5	1/8	115/1	6.2	70	1,2
EF-3	OUTDOOR AIR	COOK	120SQN17D (VF)	1290	0.375	1/4	115/1	11.3	80	1,2
NOTES: 1. PROVIDE WITH EC MOTOR, DISCONNECT, FAN SPEED CONTROLLER, INTEGRAL BACKDRAFT DAMPER, VIBRATION ISOLATION 2. FAN SHALL RUN DURING OCCUPIED HOURS 3. INTERLOCK FAN WITH LIGHT SWITCH IN DOG WASH ROOMS										

HEATED AIR CURTAIN SCHEDULE										
MARK	MANUFACTURER	MODEL	TOTAL kW	CFM	MOUNT	MOTOR HP	MCA	MOCP	POWER V/PH	NOTES
HAC-1	BERNER	CLC08-1072E	8.0	2,010	DOOR	1/5	40.2	60	208/1	1-6
NOTES: 1. N. WHITE FINISH 2. PROVIDE REMOTE THERMOSTAT 3. PROVIDE WITH REMOTE DOOR SWITCH AND BASIC CONTROLS PACKAGE 4. DISCONNECT SWITCH 5. PROVIDE CONTACTS ON EACH DOOR LEAF FOR DOUBLE DOORS. 6. NO SUBSTITUTIONS ALLOWED.										

VENTILATION SCHEDULE based on 2018 IMC													
Zone Identification	Occupancy Category	Zone Floor Area Az (ft2)	Area Outdoor Airflow Rate Ra (CFM/ft2)	Occupant Density (#/1000ft2)	Zone Population Pz (People)	People Outdoor Airflow Rate Rp (CFM/person)	Zone Air Effectiveness EZ	Zone Outdoor Airflow Rate Vz (CFM)	Actual Provided Outdoor Airflow (CFM)	Mechanical Unit	Exhaust Rate (CFM/ft2 or per fixture)	Required Exhaust Airflow (CFM)	Actual Provided Exhaust Airflow (CFM)
Sales Floor	Sales	3800	0.12	15	57	7.5	0.80	1104	1162	AHUs	0	0	0
Office	Office Space	150	0.06	-	2	5	0.80	24	64	AHUs	1	150	150
Restroom	Toilets - Public	60	0	0	0	0	0.80	0	13	AHUs	70	70	75
Dog Wash	Pet Shops (Animal areas)	120	0.18	-	2	7.5	0.80	46	51	AHUs	0.9	108	250

ELECTRIC DUCT HEATER SCHEDULE								
MARK	MANUFACTURER	MODEL	CFM	DUCT SIZE	HEATING KW	POWER V/PH	STAGES	NOTES
DH-1,2,3	INDEECO	QUZ	1685	16"x16"	13	208/3	1	1-3
NOTES: 1. PROVIDE WITH DUCT DISCHARGE TEMPERATURE SENSOR, REFER TO CONTROL SEQUENCE ON M1.0. 2. PROVIDE SQUARE TO ROUND ADAPTERS FROM MANUFACTURER TO MOUNT HEATER IN AN 18" DUCT. 3. SCR HEATER								

EXISTING SPLIT SYSTEM SCHEDULE																			
AIR HANDLER UNIT										CONDENSING UNIT					SINGLE POINT POWER				
MARK	MANUFACTURER	MODEL	TONS	NET SENS. MBH	NET TOTAL MBH	HEAT KW	EAT DB/WB	AMB TEMP	TOTAL CFM	O.A. CFM	E.S.P. *WG	H.P.	WEIGHT (LBS)		MARK	MANUFACTURER	MODEL	SEER	WEIGHT (LBS)
(E) AHU-R7/1, (E) AHU-R7/2, (E) AHU-R7/3	LENNOX	CBA25UH-060	5	39.4	56.5	15	80°F/67°F	95°F	1685	430	0.5	1.0	300		(E) CU-R7/1, (E) CU-R7/2, (E) CU-R7/3	LENNOX	ML14XC1-060-230	14.25	300
NOTES: 1. EXISTING SYSTEM TO REMAIN WITH ECM MULTI SPEED CONSTANT TORQUE DRIVE. 2. PROVIDE WALL MOUNTED THERMOSTAT AND TEMPERATURE SENSOR PER PLAN.																			



Design and construction documents are instruments of service and are given in confidence and remain the property of Onyx Creative. The use of this design and these construction documents for purposes other than the specific project named herein is strictly prohibited without expressed written consent of Onyx Creative.

PetPeople
SUMMIT AT WEST PRYOR
940 NW PRYOR RD, UNIT J
LEES SUMMIT (KANSAS CITY), MO

Project No: 18804
Drawn By: AEU
Date: 07/16/2021
Issue: Ekl/ Permit
08/27/2021 Revision: 2

M2.0

MECHANICAL SCHEDULES
AND DETAILS

onyx creative

25001 Emery Road, Suite 400
Cleveland, Ohio 44128
216.233.3200 onyxcreative.com