

REVISION		DATE BY
2	ASI #2	01/02/21
5	ASI #5	03/16/21
6	ASI #7	04/16/21
7	ASI #5	05/19/21
9	ASI #10	07/23/21
10	ASI #11	08/13/21

**brr**

Architect of Record:  
BRR Architecture, Inc.  
Kansas City  
Overland Park, KS 66204  
Tel: 913-262-9995  
Fax: 913-262-9044

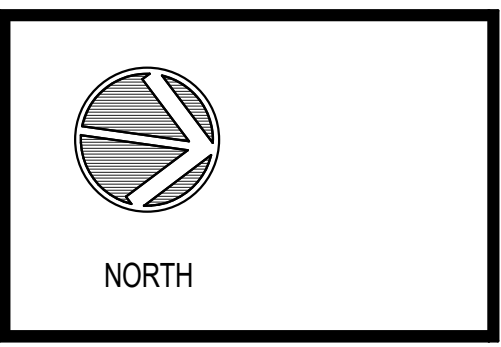
PROFESSIONAL SEAL

Richard A. Majors, Jr.  
Architect  
Missouri License No. A-007528

LOCATION  
**LEE'S SUMMIT, MO #2**

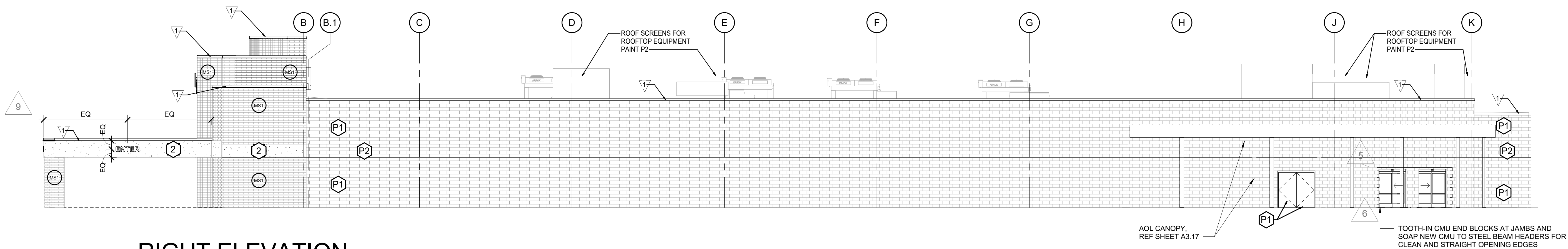
HY-VEE INC.  
5820 WESTOWN PARKWAY  
WEST DES MOINES, IOWA 50386  
TEL: 515/267-2800  
FAX: 515/267-2835

**HyVee**  
EMPLOYEE OWNED

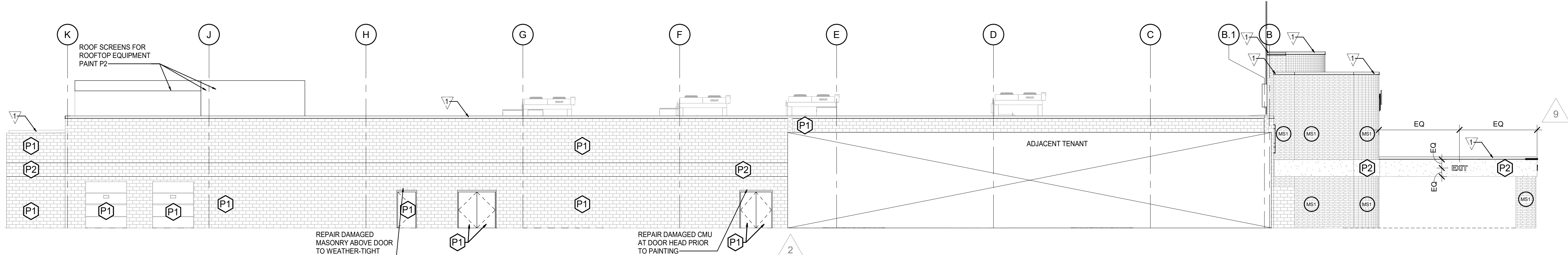


EXTERIOR ELEVATIONS

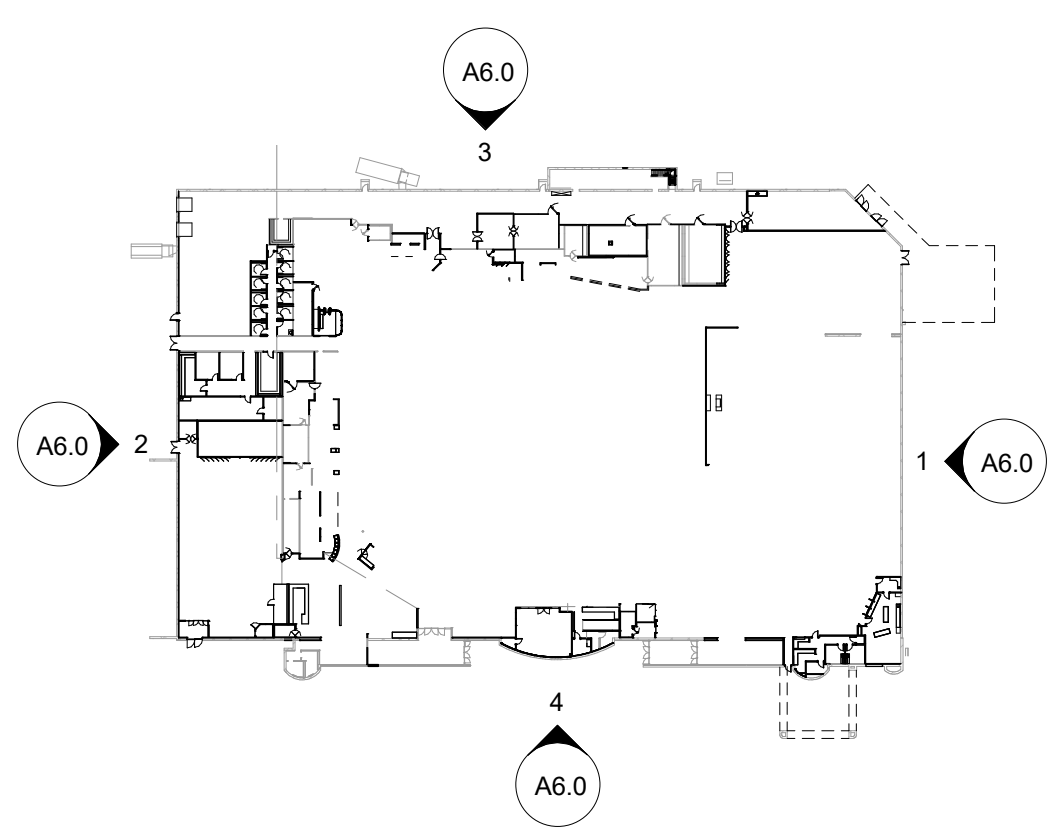
PROJECT MANAGER SB	CHECKED BY
DRAWN BY: SB	DATE: 8/13/21
SCALE: As indicated	JOB NUMBER: 62930547
SHEET: <b>A6.0</b>	



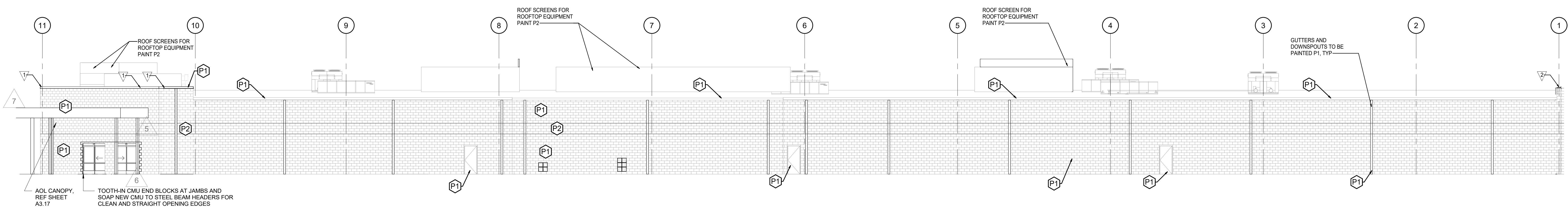
1 **RIGHT ELEVATION**  
SCALE: 3/32" = 1'-0"



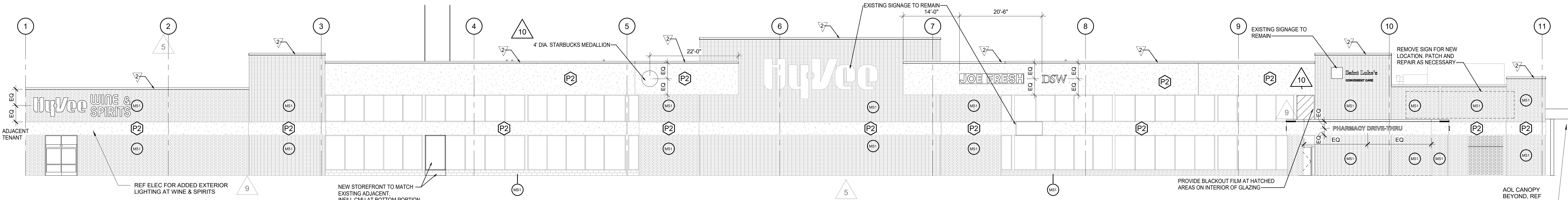
2 **LEFT ELEVATION**  
SCALE: 3/32" = 1'-0"



**KEY PLAN**  
SCALE: N.T.S.



3 **REAR ELEVATION**  
SCALE: 3/32" = 1'-0"



4 **FRONT ELEVATION**  
SCALE: 3/32" = 1'-0"