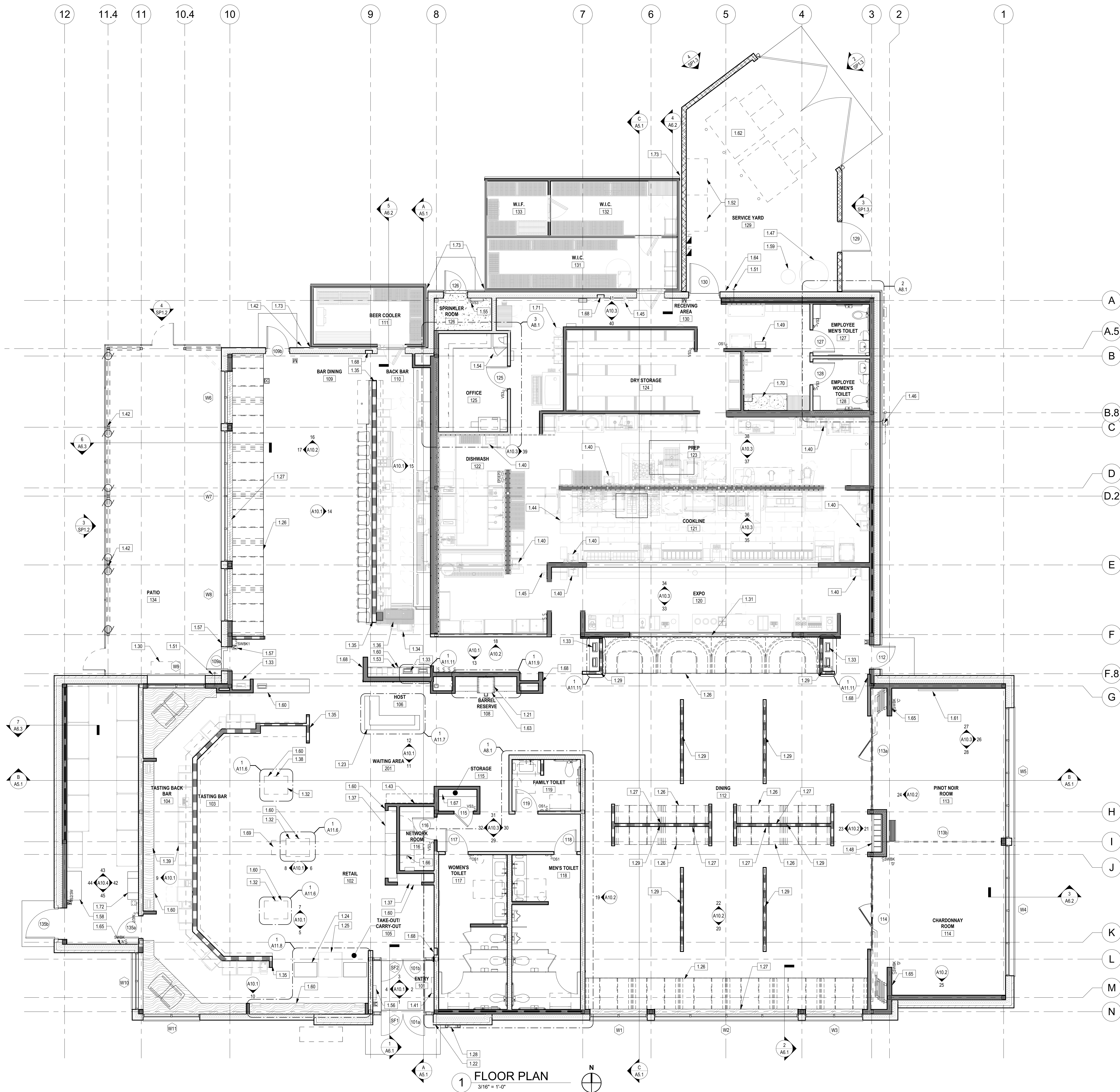


9/21/2021 11:16:26 AM BIM 360://204530-COOPERS HAWK-LEE SUMMIT204530\_R21\_A\_COOPERS HAWK-LEE SUMMIT.MXD



1 FLOOR PLAN  
3/16" = 1'-0"

## GENERAL NOTES

- ALL DIMENSIONS ARE NOMINAL AND ARE FROM FACE OF SUBSTRATE, U.N.O.
- REFER TO QF-SHEETS FOR ROUGH-IN REQUIREMENTS OF KITCHEN EQUIPMENT.
- PROVIDE IN-WALL BLOCKING FOR MILLWORK, SHELVING, PANELS, ETC. REFER TO QF-SHEETS FOR ADDITIONAL INFORMATION.
- ALL NEW PARTITIONS WITH SINKS AND/OR "WET EQUIP" TO HAVE "WATER RESISTANT GYPSUM BOARD" UNLESS NOTED OTHERWISE, WITH "CEMENT BOARD BASE TO 12" A.F.F.
- WALLS IN KITCHEN AREAS AND TOILET ROOMS TO HAVE 12" BASE OF 5/8" CEMENT BOARD, 4" CEMENT BOARD BASE AT TOILET ROOM WALLS WITH BASE TILE ONLY. FACE OF CEMENT BOARD TO BE FLUSH WITH FACE OF GYPSUM BOARD.
- MOUNT ALL FIXTURES AND ACCESSORIES AT HEIGHTS TO CONFORM TO ALL GOVERNING CODES AND A.D.A. REQUIREMENTS.
- ALL CONTRACTORS TO VERIFY EXISTING SITE CONDITIONS BEFORE ANY WORK IS TO BEGIN. NOTIFY ARCHITECT OF DISCREPANCIES (TYPICAL).
- COORDINATE OUTLETS AT MILLWORK (PHONE, ETC.) WITH MILLWORKER AND ELECTRICAL DRAWINGS. PROVIDE SHOP DRAWINGS FOR REVIEW.
- ALL WORK TO BE DONE IN ACCORDANCE WITH ALL GOVERNING STATE AND LOCAL CODES AND ORDINANCES (TYPICAL).
- FIRE TAPE ONLY "WATER RESISTANT" GYP. BD. BEHIND WALK-IN COOLERS AND FREEZERS.
- REFER TO QF-SHEETS AND CURB AND FOUNDATION PLAN FOR FLOOR DRAINS AND DEPRESSION LOCATIONS.
- ALL EXPOSED WATER SUPPLY PIPES, WASTE LINES, ELECTRICAL CONDUIT AND OTHER LIKE ITEMS THAT ARE NOT ABLE TO BE CONCEALED WITHIN WALL VOIDS MUST BE INSTALLED A MINIMUM OF SIX INCHES ABOVE THE FLOOR AND ONE INCH AWAY FROM THE WALL, INCLUDING THOSE AT THE BOTTOM OF THE EQUIPMENT.
- K.E.C. TO PROVIDE STAINLESS STEEL CLOSURE STRIPS, FLOOR TO CEILING TYP., BETWEEN COOLER BOX AND WALL CONDITIONS.
- THE DRAWINGS SHALL BE READ IN CONJUNCTION WITH STRUCTURAL, MECHANICAL, PLUMBING, ELECTRICAL AND OTHER CONSULTANT DRAWINGS AND SPECIFICATIONS AND WITH SUCH OTHER WRITTEN INSTRUCTIONS OR SKETCHES AS MAY BE ISSUED DURING THE COURSE OF THE CONTRACT. ANY DISCREPANCIES SHALL BE REFERRED TO THE SUPERINTENDENT AND ARIA GROUP ARCHITECTS, INC. BEFORE PROCEEDING WITH ANY WORK.
- REFER TO SHEET A8.1 FOR DOOR AND WINDOW SCHEDULES.
- DENOTES OWNER HANDLING LIST ITEMS, PROVIDED BY OWNER & INSTALLED BY G.C. REFER TO FLOOR PLAN AND INTERIOR ELEVATIONS.

## WALL LEGEND

- NEW PARTITION WALL
- NEW CMU WALL
- NEW PARTITION WALL W/ SOUND ATTENUATION BATTS OR THERMAL INSULATION
- NEW LOW HEIGHT PARTITION WALL OR BAR DIE
- LOCATION OF WALL BRACING, REFER TO S-SHEETS

## KEYNOTES

- WINE BARREL AND KEG SYSTEM
- KNOX KEY BOX TO BE INSTALLED AS REQUIRED BY THE LOCAL AUTHORITY
- HOST STAND BY MILLWORK CONTRACTOR REFER TO SHEET A1.0 FOR ELECTRICAL STUB-OUT LOCATIONS. REFER TO SHEET A2.4 FOR LIGHTING REQUIREMENTS
- CARRY-OUT AND CHECK-OUT COUNTERS BY MILLWORK CONTRACTOR. REFER TO SHEET A1.0 FOR ELECTRICAL STUB-OUT LOCATIONS
- REFRIGERATED CASE BY KEC, REFER TO QF-SHEETS
- FIXED SEATING, TYP., REFER TO SHEET A12.2
- CONTRACTOR TO PROVIDE IN WALL BLOCKING FOR TABLE SUPPORT, REFER TO DETAILS 10 & 11A12.3
- EXTERIOR ILLUMINATED MENU BOARD
- LOW WALL GLASS SCREEN. REFER TO INTERIOR ELEVATIONS
- EXTERIOR STAINLESS STEEL SERVICE STATION, BY KEC, REFER TO QF DRAWINGS
- GLASS SCREEN WALL AT EXPO LINE
- WINE DISPLAY CABINETS BY MILLWORK CONTRACTOR
- MILLWORK POS BY MILLWORK CONTRACTOR. REFER TO INTERIOR ELEVATIONS. PROVIDE 2" GROMMET HOLES AT ALL P.O.S. COUNTERTOPS
- REACH THROUGH BIN @ BAR PICK-UP, REFER TO QF-SHEETS
- BAR DIE WALL AND COUNTERTOP TO HAVE FINISHED EDGE
- STAINLESS STEEL CORNER DRAIN BOARD. REFER TO QF-SHEETS
- RETAIL DISPLAY BY MILLWORK CONTRACTOR
- LUX WINE DISPLAY. REFER TO INTERIOR ELEVATIONS
- TASTING BAR. REFER TO INTERIOR ELEVATIONS
- HANDSINK BY KITCHEN CONTRACTOR WITH TOWEL AND SOAP DISPENSER BY OWNER. REFER TO QF-SHEETS
- EASEL BOARD PROVIDED BY MILLWORKER, INSTALLED BY CONTRACTOR PROVIDE IN-WALL BLOCKING AS REQUIRED. REFER TO E-SHEETS FOR POWER REQUIREMENTS
- ROOF DRAIN & OVERFLOW DRAIN LOCATION, COORDINATE ANY CLEANOUT LOCATIONS W/ ARCHITECT. REFER TO DETAIL 9A3.2
- WAITING BENCH
- ANSUL FIRE SYSTEM TO BE COORDINATED W/ KITCHEN
- REMOTE ANSUL FIRE PULL STATION, REFER TO QF-SHEETS, CONFIRM LOCATIONS W/ FIRE INSPECTOR PRIOR TO INSTALLATION. TO BE COORDINATED W/ KITCHEN
- GAS METER PROVIDED BY LANDLORD, REFER TO SP1.1
- OIL TANK, BY OWNER, INSTALLED BY G.C. REFER TO SP1.3 AND P-SHEETS
- DECANTER DISPLAY
- EQUIPMENT PLATFORM ACCESS LADDER. REFER TO SHEET A3.2
- FIRE RISER LINE. REFER TO P-SHEETS
- HOSE BIBB. REFER TO P-SHEETS
- LAUNDRY BINS LOCATED IN SERVICE YARD, REFER TO SP1.3
- DECANTER COUNTER & STORAGE CABINET
- LOCATION OF GARDALL OFFICE SAFE (HINGED RIGHT, LOAD RIGHT), COORDINATE EXACT LOCATION & HEIGHT OF DROP-OFF WINDOW IN WALL W/ SAFE LOCATION. REFER TO SHEET A8.1
- FIRE ALARM CONTROL PANEL, REFER TO E-SHEETS
- FIRE ALARM ANNUNCIATOR PANEL, REFER TO E-SHEETS
- LOCATION OF AUTOMATIC DOOR OPENER PUSH BUTTON. MOUNTING HEIGHT TO BE 36" AFF
- WRAPPING COUNTER, CONTRACTOR TO PROVIDE IN-WALL BLOCKING, REFER TO SHEET 71A11.10
- CO2 TANK BY OWNER, INSTALLED BY G.C.
- MILLWORK DISPLAY TO HAVE INTEGRATED LIGHTING, REFER TO MISCELLANEOUS LIGHTING DETAILS ON SHEET A2.4 FOR ADDITIONAL INFORMATION
- LOCATION OF TV, REFER TO INTERIORS ELEVATIONS & E-SHEETS FOR ADDITIONAL INFORMATION
- TRASH COMPACTORS IN SERVICE YARD, BY OWNER, REFER TO SP1.3 AND E-SHEETS
- LINE LOCATION FROM NITROGEN TANK TO BARREL RESERVE, REFER TO QF-SHEETS & P-SHEETS. TERMINATE INSIDE CABINET @ 36" AFF
- DOOR BUZZER LOCATION, REFER TO E-SHEETS FOR MORE INFORMATION
- DIMMER SWITCH BANK. REFER TO E-SHEETS
- AV EQUIPMENT BY OWNER, REFER TO E-SHEETS FOR POWER AND DATA REQUIREMENTS. G.C. TO KEEP ALL PLUMBING AND ROOF PENETRATIONS FROM ABOVE OR BELOW THIS AREA.
- MARKETING, TOILET & HIGH-CHAIR STORAGE. REFER TO DETAILS 6A11.10 & 10A11.10
- FIRE EXTINGUISHER CABINET, REFER TO EM1.1
- GIFT DISPLAY BY OWNER
- WATER SOFTENING EQUIPMENT, REFER TO P-SHEETS
- NITROGEN TANK BY OWNER, INSTALLED BY G.C.
- METAL CART WORK STATION BY OWNER
- STAINLESS STEEL INSIDE ANGLE CORNER GUARDS AT EXTERIOR COOLERS

aria  
GROUP

830 North Blvd.  
Oak Park, Illinois  
60301

708-445-8400  
ariainc.com

ARIA GROUP ARCHITECTS, INC.

540 NW CHIPMAN  
ROAD, LEE'S SUMMIT,  
MO 64086

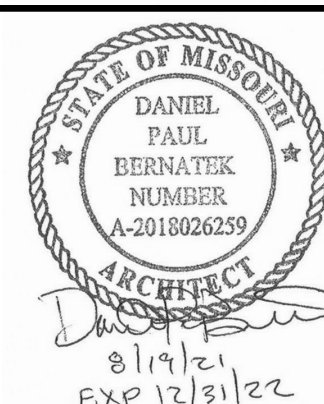
COOPERS' HAWK  
WINERY & RESTAURANT



FIELD VERIFICATION  
Contractor shall verify all figured dimensions and conditions at the job site and notify Aria Group Architects, Inc. of any dimensional errors, omissions or discrepancies before beginning or fabricating any work. Do not scale these drawings.

COPYRIGHT  
Aria Group Architects, Inc. shall retain all common law, statutory and other reserved rights. These drawings and related documents shall not be duplicated, disclosed or otherwise used without written consent of Aria Group Architects, Inc.

NO.	DATE	ISSUED FOR PERMIT	REMARKS
1	08/19/2021	ISSUED FOR PERMIT	
REVISIONS			



Drawing Title

NOTED FLOOR  
PLAN

Job No.  
204530

Drawn  
EN

Scale  
AS NOTED

Date  
09/08/2021

Sheet No.

A1.1