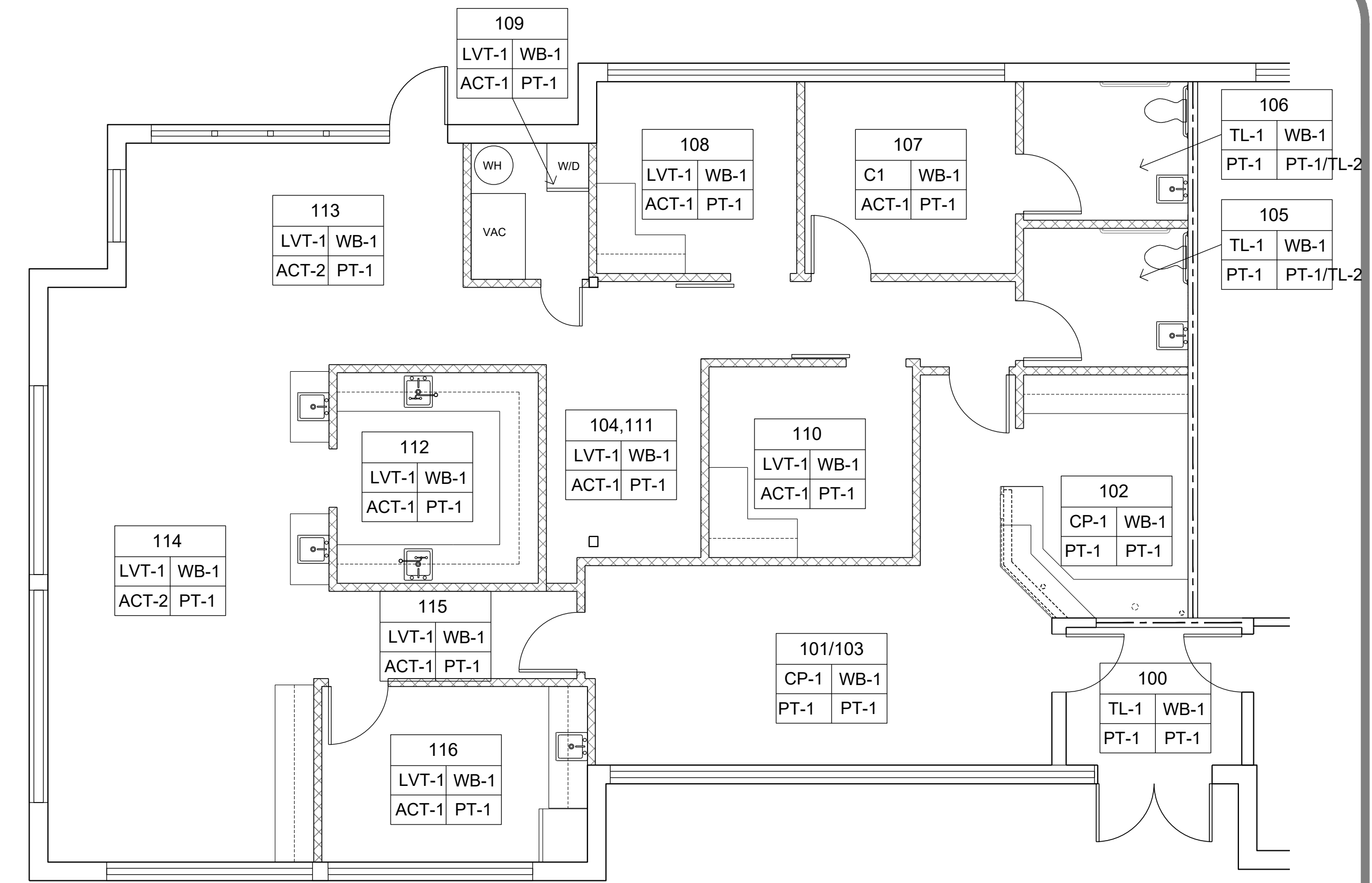
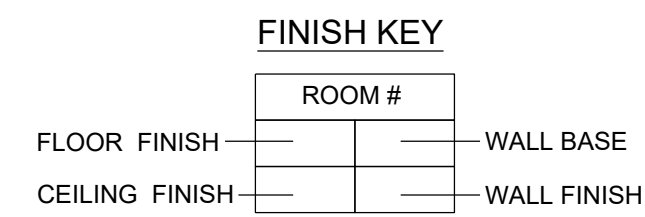
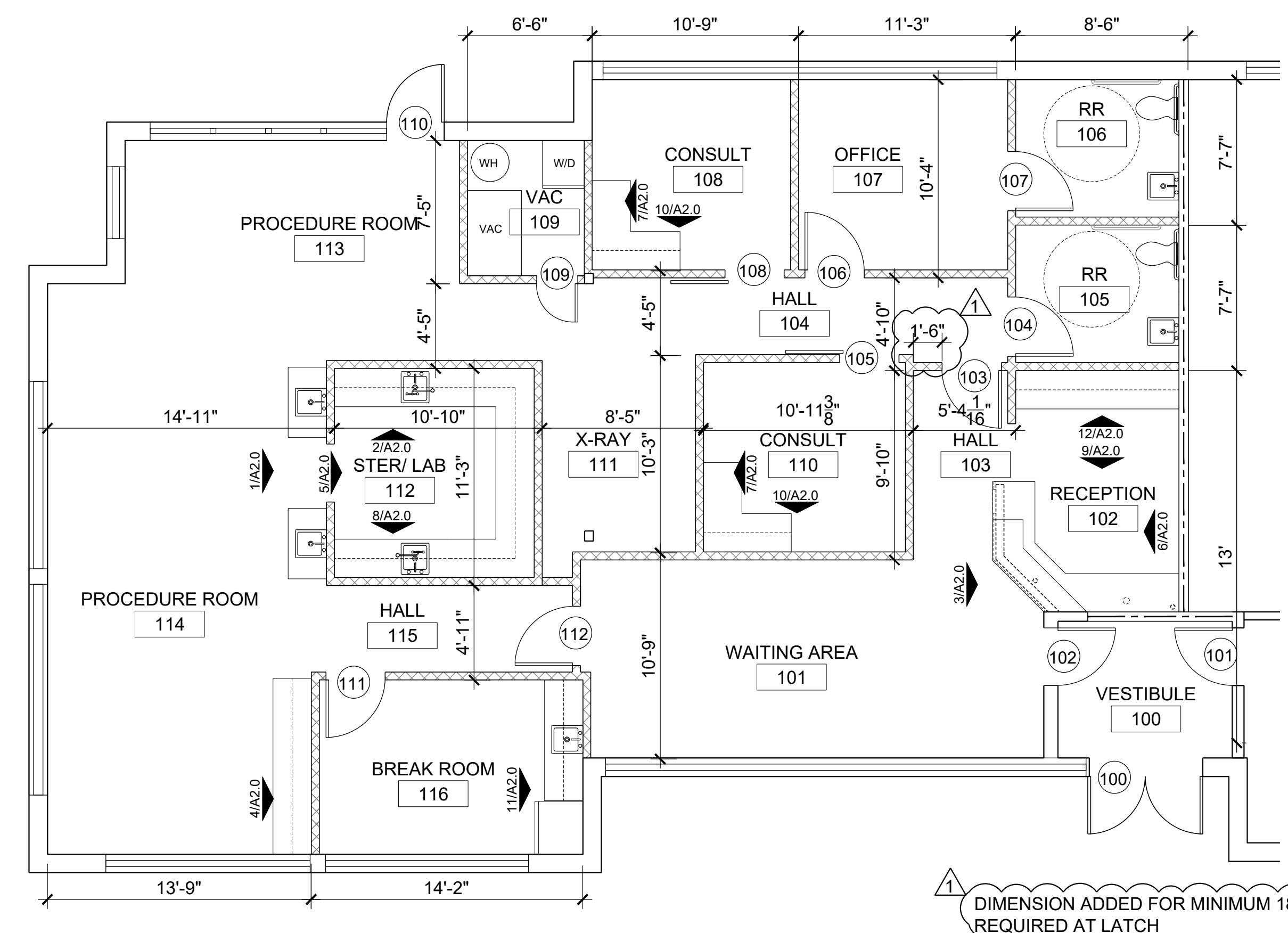


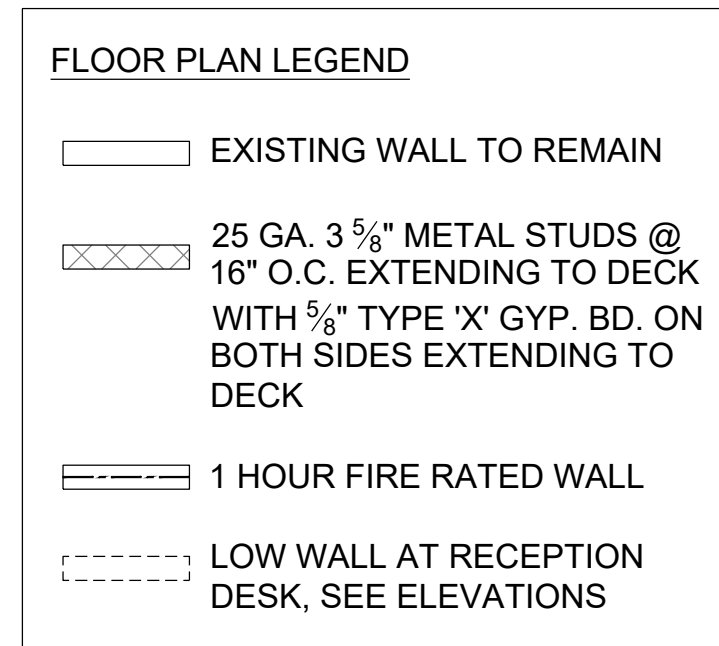
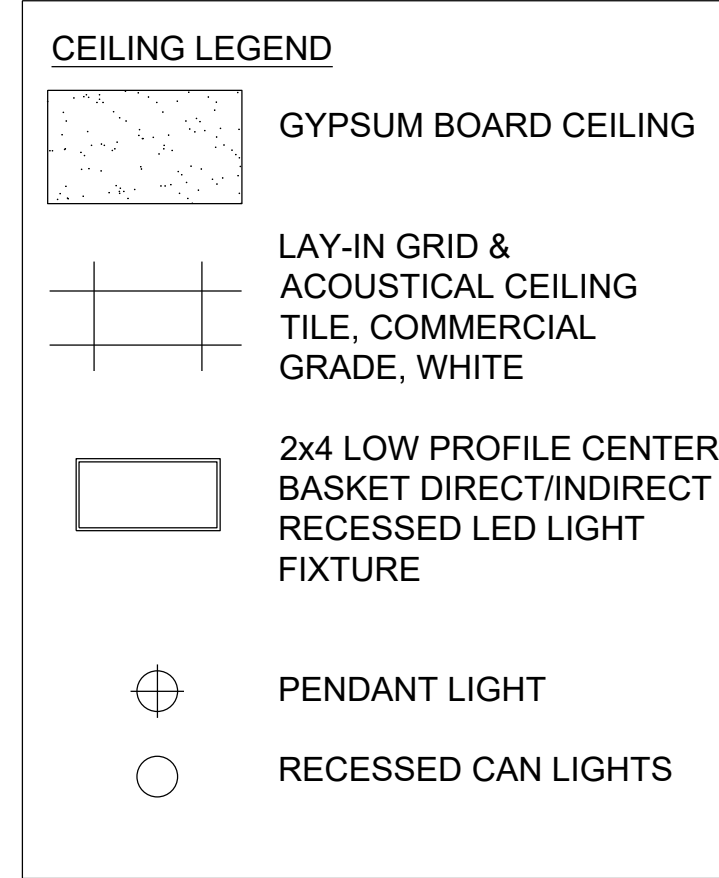
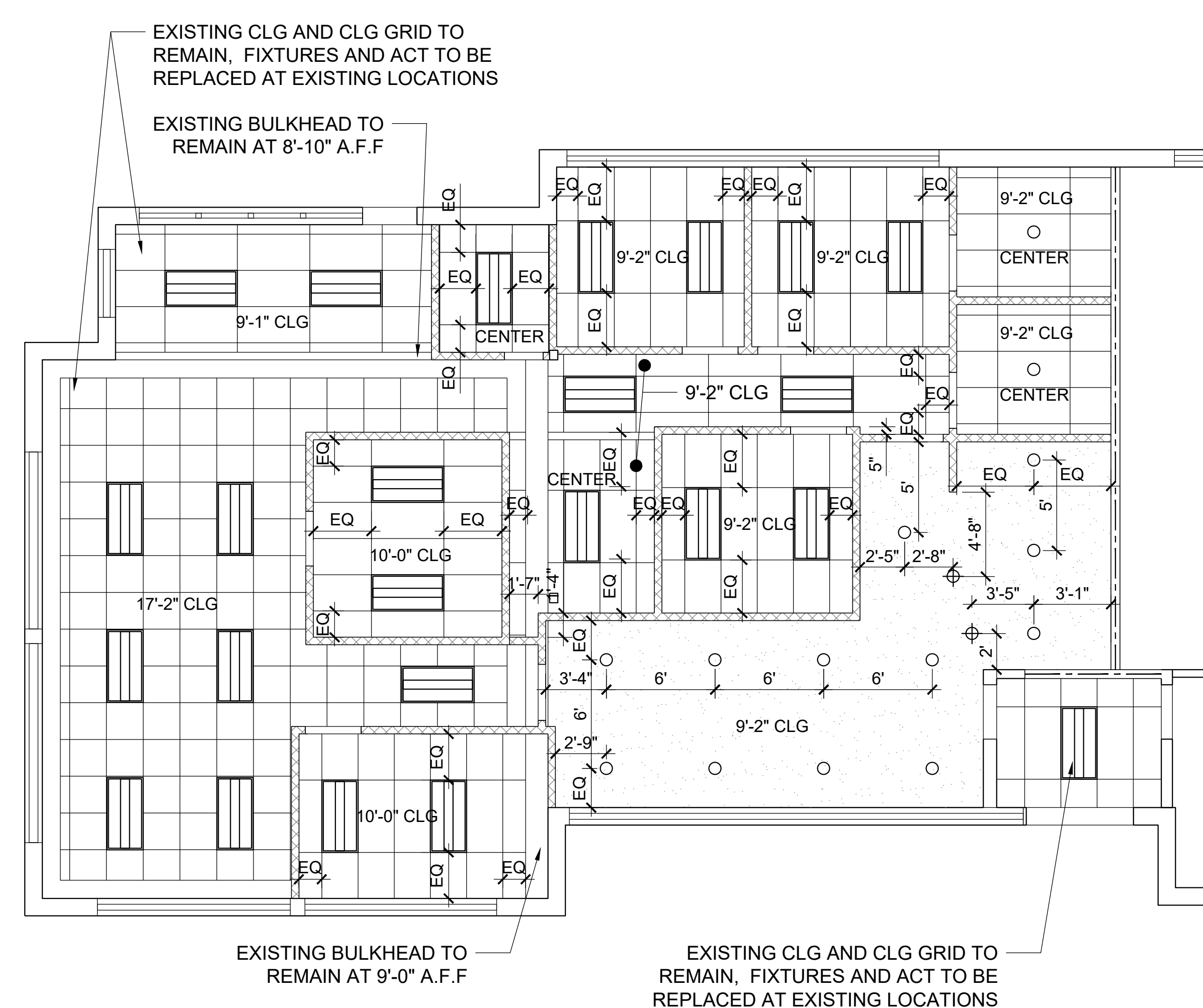
FINISH SCHEDULE				
#	PRODUCT	MANUFACTURE	COLOR	MODEL/ PATTERN
CP-1	CARPET TILE	TARKETT	TBD	TBD
LVT-1	LVT	TARKETT	BLANCHED PINE PLWD	5134, 6" X 48"
WB-1	RUBBER WALL BASE	ROPPE	170 WHITE	4" H BASE
TL-1	RR FLOOR CERAMIC TILE	MSI	CONCRETO GRIGIO	NCONGRI2424, 24" X 24" MATTE
TL-2	RR WALL TILE	TBD	TBD	TBD
TL-3	BREAKROOM-BACKSPLASH	TBD	TBD	TBD
ACT-1	CEILING TILE	USG RADAR	WHITE	2'X4' FLAT SQUARE EDGE
PT-1	PAINT	SHERWIN WILLIAMS	SW 7103-WHITETAIL	SW 7103, FINISH: EGGSHELL
PL-1	PLASTIC LAMINATE	FORMICA	5887-NT	NATURELLE FINISH
PL-2	PLASTIC LAMINATE	FORMICA	7223C-AC	
SS-1	QUARTZ COUNTERTOP	METRO QUARTZ	M4015	CALZADA



**2 FINISH PLAN**  
SCALE: 3/16" = 1'-0"  
NORTH



**1 FLOOR PLAN**  
SCALE: 3/16" = 1'-0"  
NORTH



**3 REFLECTED CEILING PLAN**  
SCALE: 3/16" = 1'-0"  
NORTH



Dev Anand  
President & CEO

Kevin Campbell  
Senior Architect

8807 Monrovia Street  
Lenexa, Kansas 66215

Phone: 913.322.8892  
Fax: 913.322.8896  
Email: kevin@dev-inc.com

THIS DRAWING has been prepared by the Architect, or prepared under his direct supervision as an instrument of service and is intended for use only on this project. All Drawings, Specifications, Ideas and designs, including the overall layout, form, arrangement, and composition of spaces and elements portrayed, constitute the original, unpublished work of the Architect. Any reproduction, use, or disclosure of the information contained herein without the written consent of the Architect is strictly prohibited.

COMPLY WITH all local, state, and federal regulations with authorities having jurisdiction and with requirements of the Landlord, if applicable. Do not start work until all permits and required approvals are obtained.



**LAKWOOD ORTHODONTICS**  
 A TENANT FINISH FOR:  
 1399 NE DOUGLAS ST  
 LEE'S SUMMIT, MO 64086

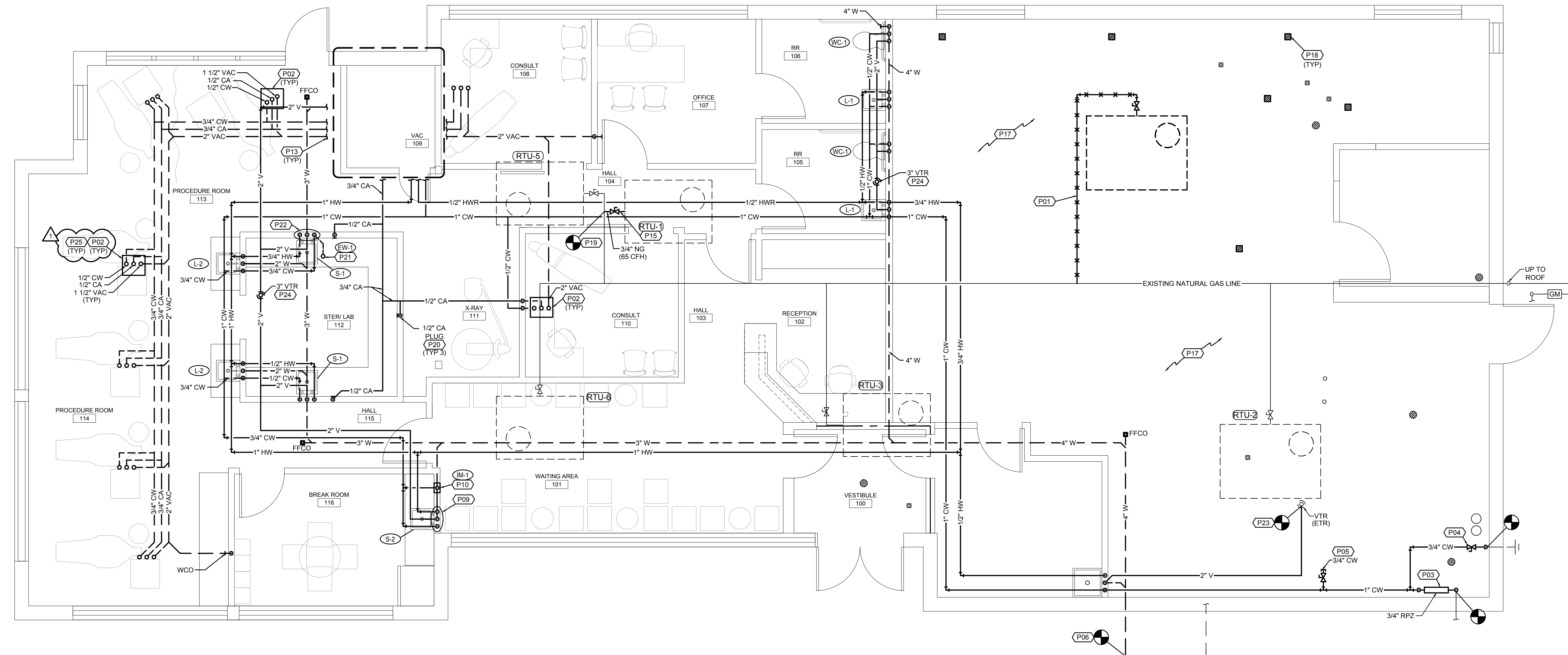


PROJECT NO. 210407  
**DRAWING ISSUANCE**  
 08/13/2021 BUILDING PERMIT REV 01  
 09/03/2021

SHEET NUMBER  
**A1.1**  
 FLOOR PLAN

THIS DRAWING has been prepared by the Architect, or prepared under his direct supervision as an instrument of service and is intended for use only on this project. All Drawings, Specifications, Ideas and designs, including the overall layout, form, arrangement, and composition of spaces and elements portrayed, constitute the original, unpublished work of the Architect. Any reproduction, use, or disclosure of the information contained herein without the written consent of the Architect is strictly prohibited.

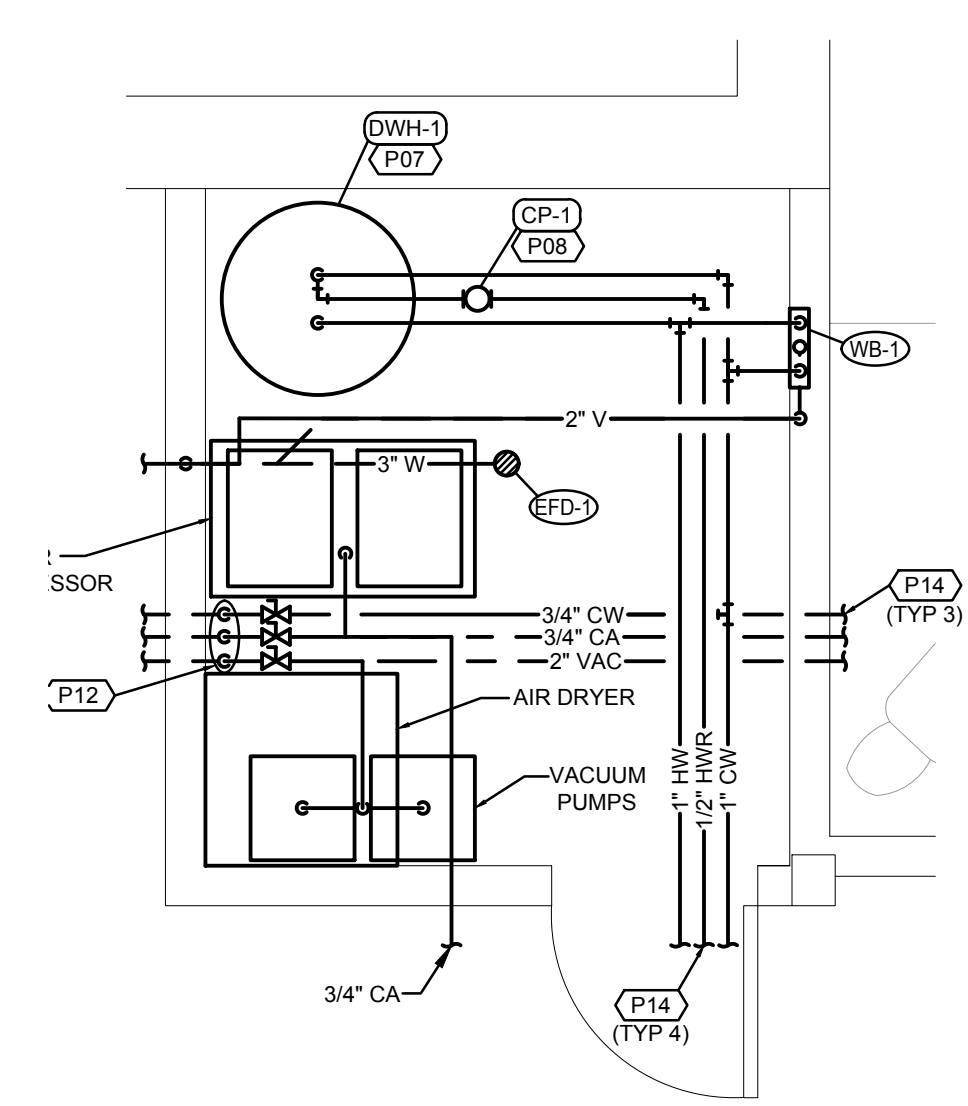
COMPLY WITH all laws, codes, ordinances and regulations with authorities having jurisdiction and with requirements of the Landlord, if applicable. Do not start work until all permits and required approvals are obtained.



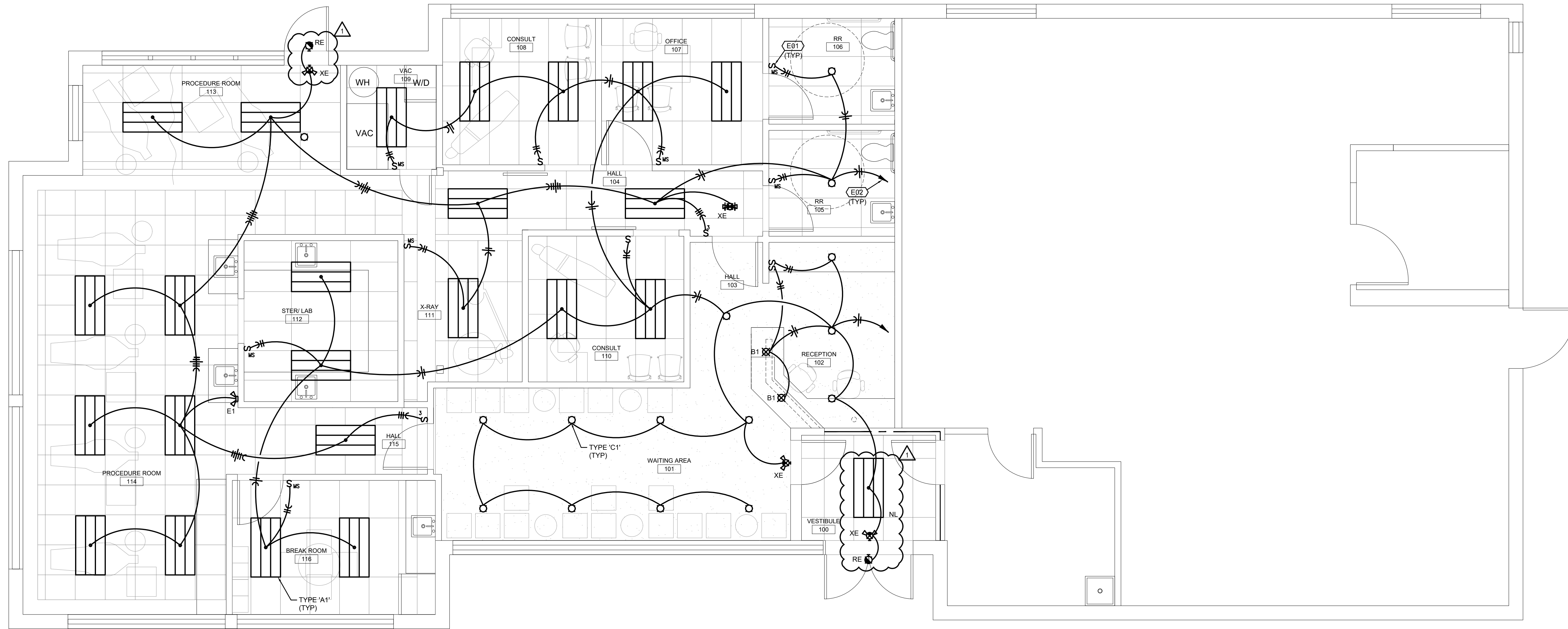
**FLOOR PLAN-PLUMBING**  
SCALE: 1/4"=1'-0"

**FLOOR PLAN NOTES**

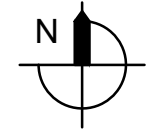
- EXISTING INACTIVE NG PIPING TO BE REMOVED AND CAPPED BACK TO MAIN.
- TERMINAL BOX BY OTHERS, PROVIDE ACCESSORIES AND SHUT-OFF VALVES FOR CHAIR CONNECTIONS. MAKE FINAL CONNECTIONS TO EQUIPMENT.
- PROVIDE NEW 1" RPZ BACKFLOW PREVENTER, WATTS 009 OR EQUIVALENT. INSTALL PER MANUFACTURER'S REQUIREMENTS. PROVIDE DRAIN LINE FROM BACKFLOW PREVENTER TO NEAREST FLOOR DRAIN. RE: DETAIL.
- CONNECT TO EXISTING WALL HYDRANT. PROVIDE ACCESSIBLE SHUT-OFF VALVE.
- PROVIDE 3/4" CW STUB-OUT FOR FUTURE TENANT.
- CONNECT TO NEAREST EXISTING WASTE PIPING OF EQUAL OR GREATER SIZE. CONTRACTOR TO FIELD VERIFY EXACT SIZE, LOCATION AND ELEVATION OF EXISTING PIPING PRIOR TO CONSTRUCTION.
- PROVIDE NEW ELECTRIC WATER HEATER MOUNTED FROM ABOVE CEILING. INSTALL PER MANUFACTURER'S REQUIREMENTS. PROVIDE FULL SIZED DRAIN LINES FROM DRAIN PAN AND T&P RELIEF VALVE TO NEAREST FLOOR DRAIN AND INDIRECT WASTE. RE: DETAIL.
- PROVIDE HOT WATER RECIRCULATING PUMP SUSPENDED FROM STRUCTURE UTILIZING ALL THREAD RODS. INSTALL PER MANUFACTURER'S REQUIREMENTS.
- 1/2" CW AND HW DOWN IN WALL TO SINK FAUCET. 2" W DOWN, 1 1/2" V UP. ROUTE PIPING UNDER CABINET TO FIXTURE.
- 1/2" CW DOWN IN WALL TO ICE-MAKER BOX.
- PROVIDE ACCESSIBLE SHUT-OFF VALVES FOR CW, CA AND VAC.
- 3/4" CW, 3/4" CA AND 2" VAC DOWN. ROUTE CW, CA AND VAC PIPING UNDERGROUND AS SHOWN ON FLOOR PLAN.
- REFER TO ENLARGEMENT FOR CONTINUATION.
- REFER TO OVERALL PLAN FOR CONTINUATION.
- CONNECT 3/4" NG TO ROOF TOP UNIT WITH GAS COCK, DIRT LEG AND UNION.
- EXISTING FLOOR DRAINS/SINKS TO BE PLUGGED.
- EXISTING INACTIVE NG PIPING FROM KITCHEN EQUIPMENT TO BE REMOVED AND CAPPED BACK TO MAIN SOURCE.
- EXISTING GREASE INTERCEPTOR AND ALL ASSOCIATED APPURTENANCES TO BE REMOVED. CAP ALL PIPING CONNECTIONS WATER TIGHT.
- CONNECT TO NEAREST EXISTING NATURAL GAS PIPING OF EQUAL OR GREATER SIZE. CONTRACTOR TO FIELD VERIFY EXACT SIZE, LOCATION AND ELEVATION OF EXISTING PIPING PRIOR TO CONSTRUCTION.
- COORDINATE FINAL LOCATION OF CA PLUG WITH OWNER PRIOR TO CONSTRUCTION.
- 1/2" CW TO EMERGENCY EYE WASH. ROUTE PIPING UNDER COUNTER. COORDINATE FINAL LOCATION OF EMERGENCY EYE WASH WITH OWNER PRIOR TO CONSTRUCTION.
- 3/4" CW AND 3/4" HW DOWN IN WALL. ROUTE 1/2" CW AND HW TO SINK FAUCET AND 1/2" CW AND HW TO EMERGENCY EYE WASH. 2" W DOWN, 1 1/2" V UP.
- CONNECT TO NEAREST EXISTING VENT THRU ROOF PIPING OF EQUAL OR GREATER SIZE. CONTRACTOR TO FIELD VERIFY EXACT SIZE, LOCATION AND ELEVATION OF PIPING.
- KEEP VENT THRU ROOF 10' MINIMUM FROM FRESH AIR INTAKES.
- PROVIDE WATTS MODEL LF288A-1/2" LEAD FREE ANTI-SIPHON VACUUM BREAKER CONFIRMING WITH ANSI A112.1.1, ASSE 1001, AND CSA B64.



**VAC ROOM ENLARGEMENT**  
SCALE: 1/2"=1'-0"



**FLOOR PLAN-LIGHTING**  
SCALE: 1/4"=1'-0"



**(E##) FLOOR PLAN NOTES**

- DUAL TECHNOLOGY WALL SWITCH OCCUPANCY SENSOR BY WATTSTOPPER OR HUBBELL.
- HOMERUN TO EXISTING 120/208 VOLT PANEL 'A' AND TERMINATE ON A 20A/1P BREAKER.



Dev Anand  
President & CEO

Kevin Campbell  
Senior Architect

8807 Monrovia Street  
Lenexa, Kansas 66215

Phone: 913.322.8892  
Fax: 913.322.8886  
Email: kevin@dev-inc.com

THIS DRAWING has been prepared by the Architect, or prepared under his direct supervision as an instrument of service and is intended for use only on this project. All Drawings, Specifications, Ideas and designs, including the overall layout, form, arrangement, and composition of spaces and elements portrayed, constitute the original, unpublished Work of the Architect. Any reproduction, use, or disclosure of the information contained herein without the written consent of the Architect is strictly prohibited.

COMPLY WITH all laws, codes, ordinances and regulations with authorities having jurisdiction and with requirements of the Landlord, if applicable. Do not start Work until all permits and required approvals are obtained.



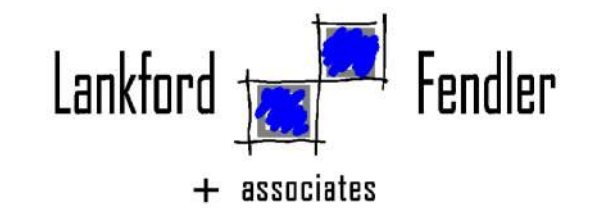
**LAKWOOD ORTHODONTICS**

A TENANT FINISH FOR:

1399 NE DOUGLAS ST  
LEE'S SUMMIT, MO 64086



PROJECT NO. 210407  
**DRAWING ISSUANCE**  
08/13/2021 PERMIT  
09/03/2021 REV 01



1730 Walnut Street Kansas City, Missouri 64108  
1915 Frederick Avenue, St. Joseph, Missouri 64501  
Phone: 816.221.1411 | Fax: 816.221.1429  
LANKFORD | FENDLER + ASSOCIATES, CONSULTING ENGINEERS, INC.  
COPYRIGHT © 2021 Project No. 21-0555-00  
CGA No. 2006001168

SHEET NUMBER  
**E2.0**  
FLOOR PLAN-LIGHTING

LIGHT FIXTURE SCHEDULE					
TYPE	MANUFACTURER	LAMPS	WATTS VOLTS	DESCRIPTION	NOTES
A1	WESTGATE LIGHTING LP-2X4-MW-40K-DS	LED 4400 LUMEN 3500K, 80 CRI	40 120	2X4 RECESSED LED TROFFER WITH DIFFUSE FLAT PANEL, WHITE HOUSING, 0-10V DIMMING DRIVER.	
B1	TO BE SELECTED	LED 3500K, 80 CRI	35 120	DECORATIVE LED PENDANT	
C1	WESTGATE LIGHTING CRLC6-15W-40K-D	LED 1245 LUMEN 4000K, 80 CRI	12 120	NOMINAL 6" DIAMETER RECESSED DOWNLIGHT, HAZE REFLECTOR AND TRIM, 0-10V DIMMING DRIVER.	
E1	SURE-LITES APEL	LED W/ FIXTURE	1.5 120	WHITE, POLYCARBONATE, NICAD BATTERY, EMERGENCY LIGHTING UNIT.	
XE RE	SURE-LITES APC-7-R	LED W/ FIXTURE	2 120	COMBINATION EXIT SIGN AND EMERGENCY LIGHTING UNIT, NICAD BATTERY, RED LETTERS, WHITE HOUSING. PROVIDE WITH SURE-LITES SELA SERIES REMOTE HEAD WHERE INDICATED ON PLANS.	1

SPECIFIC NOTES:  
1. REFERENCE PLANS FOR MOUNTING, NUMBER OF FACES AND ARROWS.

SUBSTITUTION NOTES:  
THE LIGHTING DESIGN FOR THIS PROJECT IS BASED UPON THE MANUFACTURERS SPECIFIED. IF AN ADDITIONAL SUBSTITUTION IS DESIRED BY THE CONTRACTOR, A SUBSTITUTION REQUEST SUBMITTAL MUST BE PROVIDED AS FOLLOWS:  
S1. SUBSTITUTION REQUEST MUST BE RECEIVED BY THE ENGINEER IN WRITING 10 DAYS PRIOR TO BID. FAILURE TO SUBMIT CONSTITUTES A GUARANTEE TO SUPPLY THE SPECIFIED FIXTURES.  
S2. INFORMATION IS TO BE SUPPLIED COMPARING PHOTOMETRY, (WITH FLOOR PLANS INDICATING POINT BY POINT CALCULATIONS) DIMENSIONS, MATERIAL COMPOSITION, FINISH, VISUAL APPEARANCE AS WELL AS THE "CONTRACTOR NET" PRICING. SAMPLES ARE TO BE PROVIDED UPON REQUEST.  
S3. GREAT CARE, TIME AND EXPENSE HAVE BEEN USED TO PROVIDE OUR CLIENT WITH THE LIGHTING AND CONTROLS SYSTEM. THEREFORE, FOR EACH AND EVERY TYPE OF FIXTURE OFFERED AS AN UNSOLICITED ALTERNATE, A \$500.00 FEE WILL BE CHARGED TO THE CONTRACTOR FOR REVIEW OF THE ALTERNATE FIXTURE. THIS CHARGE IS IN NO WAY A GUARANTEE OF APPROVAL, BUT IS SOLELY TO COMPENSATE THE ENGINEER FOR TIME SPENT VALIDATING EQUALITY AND COMPATIBILITY WITH THE PROJECT REQUIREMENTS. THIS REIMBURSEMENT MUST BE RECEIVED BY THE ENGINEER PRIOR TO ANY REVIEW COMMENCING.  
S4. PACKAGING OF LIGHT FIXTURES WILL NOT BE CONSIDERED OR APPROVED.  
S5. MANUFACTURER'S REPRESENTATIVE AGENTS SHALL BE ALLOWED TO OFFER MINI-LOT PRICING FOR SPECIFIED LIGHTING FIXTURES.  
S6. LIGHTING CONTROLS PRICING SHALL BE COMPLETELY SEPARATE OF ANY LIGHT FIXTURE PRICING. ANY LIGHTING CONTROLS PRICING THAT IS SUBMITTED WITH LIGHT FIXTURE PRICING (UNIT OR MINI-LOT) WILL BE IMMEDIATELY REJECTED IN ITS ENTIRETY.

GENERAL NOTE:  
G1. ELECTRICAL CONTRACTOR SHALL VERIFY CEILING TYPE PRIOR TO ORDERING ANY LIGHT FIXTURES.  
G2. ELECTRICAL CONTRACTOR SHALL COORDINATE DIMMING DRIVERS/BALLASTS WITH DIMMING SWITCHES/SYSTEMS AND SHALL INCLUDE ALL REQUIRED CONTROL WIRING.

### GENERAL NOTES (TYPICAL ALL SHEETS)

- A. REFER TO ARCHITECTS REFLECTED CEILING PLANS FOR EXACT PLACEMENT OF LIGHT FIXTURES, SPEAKER AND F.A. DEVICES IN THE CEILING SYSTEM.
- B. REFER TO ARCHITECTURAL DETAILS AND ELEVATIONS FOR COORDINATION OF LOCATION OF ALL WIRING DEVICES BEFORE ROUGH-IN OF J-BOXES.
- C. WIRING TO BE REMOVED BACK TO THE NEAREST DEVICE TO REMAIN. WIRING SHALL NOT BE TAKEN PAST THE FIRST JUNCTION BOX BEFORE THE PANELBOARD.
- D. ANY MATERIAL REMOVED THAT OWNER DOES NOT WISH TO RETAIN SHALL BE REMOVED FROM PROJECT SITE AND DISPOSED OF BY THE CONTRACTOR.
- E. NEW CIRCUITRY SHOWN FOR NEW/EXISTING POWER AND LIGHTING IS DIAGRAMMATIC AND IS INTENDED TO SHOW WHICH DEVICES ARE TO BE GROUPED ON INDIVIDUAL CIRCUITS. EXISTING WIRING THAT CONFORMS TO THE INTENT OF THE DRAWINGS MAY BE USED.
- F. PROVIDE UPDATED, TYPEWRITTEN PANELBOARD DIRECTORY FOR EACH PANELBOARD WHICH CIRCUITS HAVE BEEN ADDED TO OR MODIFIED.
- G. SUPPORT ALL LIGHT FIXTURES WITH A MINIMUM OF (4) 12 GA. HANGER WIRES TO STRUCTURE ABOVE.
- H. CONNECT EXIT AND EMERGENCY LIGHTS TO HOT LEG, NOT SWITCH LEG.
- I. WHERE MORE THAN ONE SWITCH IS INDICATED ON DRAWINGS SIDE BY SIDE, CONTRACTOR SHALL INSTALL SWITCHES UNDER ONE COMMON FACE PLATE.

### ELECTRICAL SYMBOLS

BRANCH CIRCUIT CONCEALED IN CEILING OR WALL. ARROWS INDICATE HOMERUNS TO PANEL. ALL CONDUCTORS ARE MINIMUM NO.12 UNLESS NOTED OTHERWISE.  
PHASE CONDUCTORS  
NEUTRAL CONDUCTOR  
SWITCH-LEG AND OR TRAVELER  
GROUND CONDUCTOR

LP1-10 PANEL - BREAKER NUMBER (IDENTIFICATION)  
1/3, 1/3/5 INDICATES XX= 2-POLE C.B., XXX= 3-POLE C.B.

HOMERUN INDICATED LIKE THIS INDICATED THREE SEPARATE CIRCUITS  
CONDUIT CONCEALED IN CEILING OR WALL WITH THREE CONDUCTORS:  
1-PHASE, 1-NEUTRAL, 1-GROUND WIRE, MINIMUM NO.12 WIRE UNLESS OTHERWISE SPECIFIED ON DRAWINGS.

CONDUIT RUN UNDERGROUND OR CONCEALED IN FLOOR SLAB.

GROUNDING CONDUCTOR NO.12 WIRE EXCEPT AS NOTED

COMBINATION EXIT SIGN/EMERGENCY LIGHTING UNIT - CEILING OR WALL MOUNTED. SHADED SIDE(S) INDICATES FACE SIDE(S) OF EXIT.

CEILING OR WALL MOUNTED EMERGENCY LIGHTING UNIT WITH INTEGRAL BATTERY AND UNIT MOUNTED HEADS.

2x4 / 2x2 LIGHT FIXTURE, LETTER DENOTES FIXTURE TYPE, REFER TO SCHEDULE

WALL WASH OR RECESSED CEILING LIGHT FIXTURE

PENDANT MOUNTED LIGHT FIXTURE, SIZE AND TYPE AS NOTED

208Y/120V OR 120/240V PANELBOARD (FLUSH) TOP MOUNTED 6'-0" AFF

DISTRIBUTION PANEL (SURFACE OR FLOOR MOUNTED).

POWER CONNECTION POINT

DISCONNECT SWITCH, SIZE AND TYPE AS NOTED TOP MOUNTED 5'-0" AFF

S SINGLE POLE SWITCH, TOP OF DEVICE BOX AT +4'-0" AFF

S<sup>3</sup> THREE-WAY SWITCH, TOP OF DEVICE BOX AT +4'-0" AFF

S<sup>MS</sup> WALL MOUNTED MOTION SENSOR, TOP OF DEVICE BOX AT +4'-0" AFF, TYPE AS INDICATED

⊕ DUPLEX RECEPTACLE, +1'-6" AFF OR AS NOTED

⊕ DUPLEX RECEPTACLE INSTALLED ABOVE COUNTERTOP

⊕GFI DUPLEX RECEPTACLE W/GROUND FAULT PROTECTION, +1'-6" AFF OR AS NOTED

⊕ DOUBLE DUPLEX RECEPTACLE, +1'-6" AFF OR AS NOTED

○ OR ○ WALL MOUNTED OR CEILING MOUNTED JUNCTION BOX.

◀ LOW VOLTAGE OUTLET, DOUBLE GANG BOX WITH SINGLE GANG PLASTER RING, INSTALL 1" CONDUIT STUBBED UP OUT OF TOP OF BOX TO ABOVE AN ACCESSIBLE CEILING, +1'-6" AFF OR AS NOTED.

◀ LOW VOLTAGE OUTLET INSTALLED ABOVE COUNTER, DOUBLE GANG BOX WITH SINGLE GANG PLASTER RING, INSTALL 1" CONDUIT STUBBED UP OUT OF TOP OF BOX TO ABOVE AN ACCESSIBLE CEILING, +1'-6" AFF OR AS NOTED.

⊙ DUCT MOUNTED PHOTO-ELECTRIC SMOKE DETECTOR

⊕ INDICATES WIRING DEVICE ABOVE RE: DRAWING

(X) MECHANICAL EQUIPMENT CALL OUT BUBBLE

AFF ABOVE FINISH FLOOR

ETR EXISTING TO REMAIN



Dev Anand  
President & CEO

Kevin Campbell  
Senior Architect

8807 Monrovia Street  
Lenexa, Kansas 66215

Phone: 913.322.8882  
Fax: 913.322.8886  
Email: kevin@dev-inc.com

THIS DRAWING has been prepared by the Architect, or prepared under his direct supervision as an instrument of service and is intended for use only on this project. All Drawings, Specifications, Ideas and designs, including the overall layout, form, arrangement, and composition of spaces and elements portrayed, constitute the original, unpublished work of the Architect. Any reproduction, use, or disclosure of the information contained herein without the written consent of the Architect is strictly prohibited.

COMPLY WITH all laws, codes, ordinances and regulations with authorities having jurisdiction and with requirements of the Landlord, if applicable. Do not start work until all permits and required approvals are obtained.



A TENANT FINISH FOR:  
**LAKWOOD ORTHODONTICS**  
1399 NE DOUGLAS ST  
LEE'S SUMMIT, MO 64086



PROJECT NO. 210407  
**DRAWING ISSUANCE**  
08/13/2021 PERMIT  
09/03/2021 REV 01



SHEET NUMBER  
**E3.1**  
ELECTRICAL SCHEDULES,  
NOTES, AND SYMBOLS