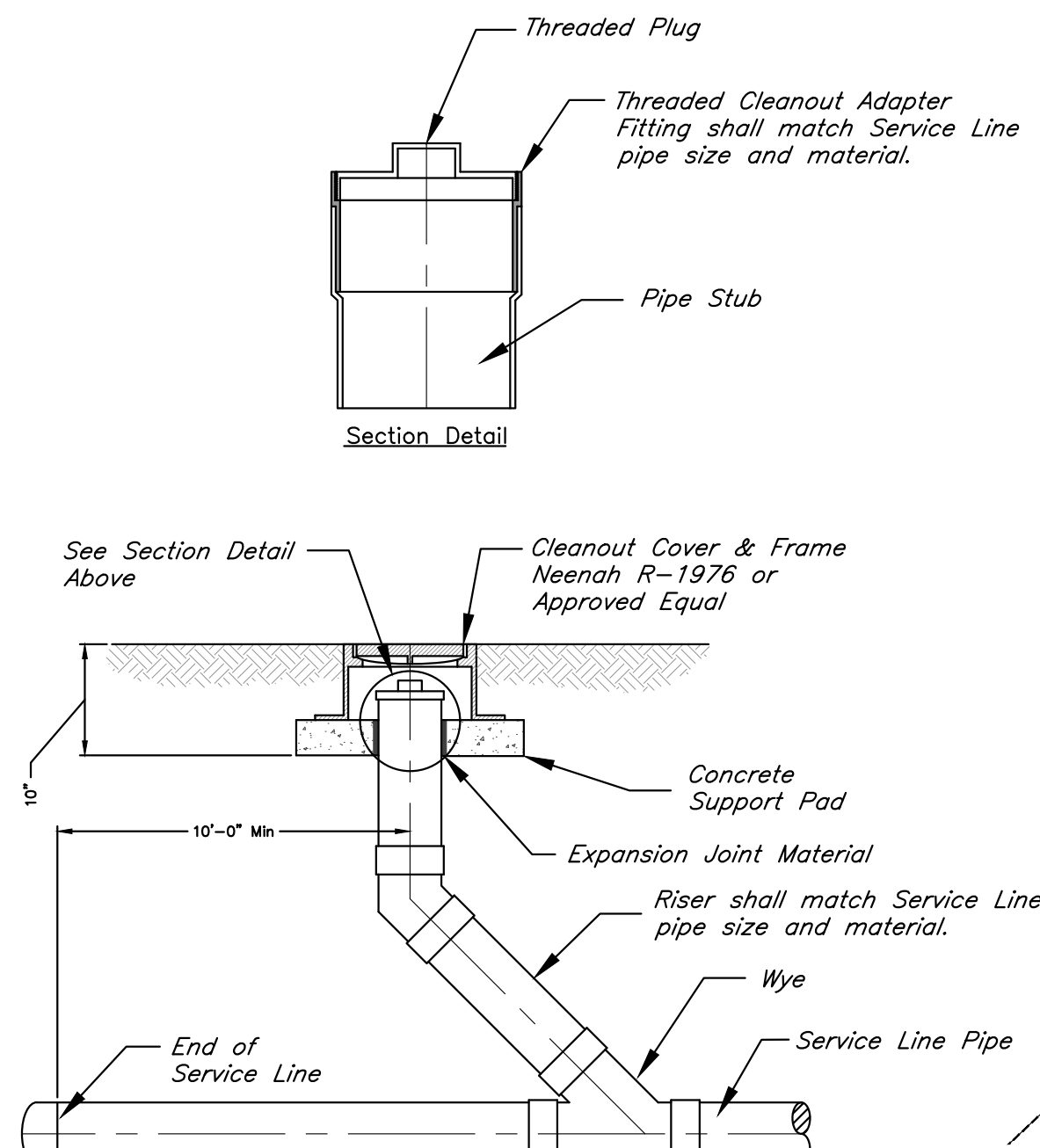
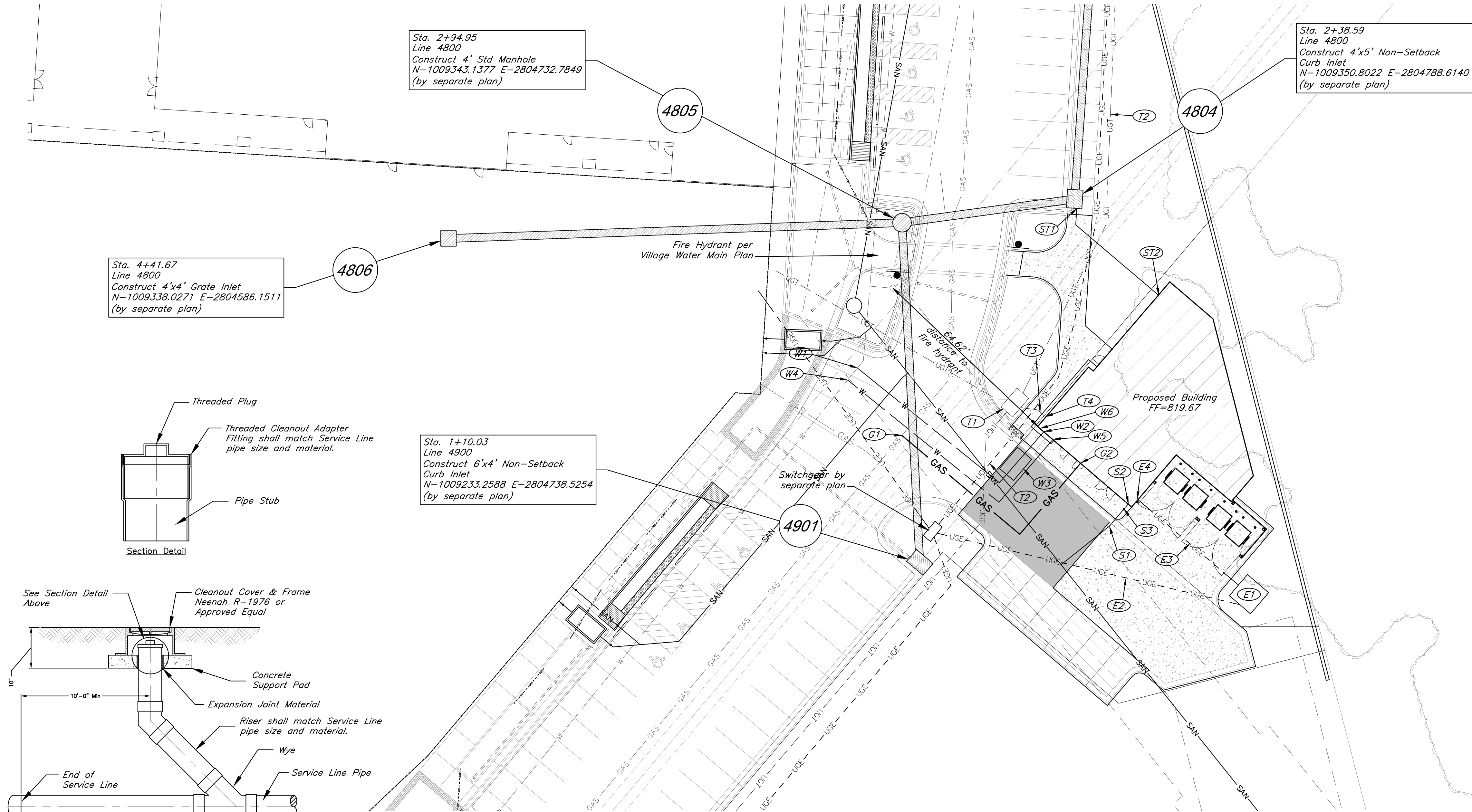


G:\127201 Civil 3D\Production Drawings\LS MAD Hub Fdpl\127200000.dwg Layout: C005 Utility Plan Thursday August 26, 2021, 2:51pm Copyright 2021, George Butler Associates, Inc. THE PROFESSIONAL WHOSE SEAL SIGNATURE AND PERSONAL SEAL APPEARS ON THIS PAGE ASSUMES RESPONSIBILITY ONLY FOR WHAT APPEARS ON THE PAGE, AND DISCLAIMS PERSUASION TO SECTION 327.411, RSMo ANY RESPONSIBILITY FOR ALL OTHER PLANS, SPECIFICATIONS, ESTIMATES, REPORTS OR OTHER DOCUMENTS OR INSTRUMENTS NOT SEALED BY THE UNDERSIGNED PROFESSIONAL RELATING TO, OR INTENDING TO BE USED FOR, ANY PART OR PARTS OF THE PROJECT TO WHICH THIS PAGE REFERS.



CLEANOUT DETAIL  
No Scale

**Telecom Construction Notes**

- T1 11.5'x9.5'x7.5' Communication Vault by separate plan
- T2 Communication Line by separate plan
- T3 Install 12 LF Sch. 40 PVC Conduit to building stub T4
- T4 Communication building stub

**Electrical Service Construction Notes**

- E1 9'x9' Transformer Pad per Every Standards
- E2 Install 100 LF 4" Sch. 40 PVC conduit from switchgear to transformer
- E3 Install 41 LF 4" Sch. 40 PVC conduit from transformer to building stub E4
- E4 Electrical service line building stub

**Sanitary Sewer Construction Notes**

- S1 Connect to existing sanitary sewer stub,  $\bar{E}$ =809.95. Install 29.47 LF 6" Dia. SDR26 PVC east at 2% to S2.
- S2 Connect to building stub,  $\bar{E}$ =810.14
- S3 Install Cleanout - see detail, this sheet

**Water Line Construction Notes**

- W1 Connect domestic water service line to existing 12" PVC water main via tapping sleeve with (2) 12" gate valves on the main and (1) 3" gate valve on the service line. Install 72 LF 3" Dia. C901 HDPE Domestic Water Service Line to building stub W2.
- W2 Connect domestic water service line to building
- W3 Install 3" Water Meter in vault per Lee's Summit Standards. Water meter sized per MEP plan. Vault to have 9" lid casting.
- W4 Connect fire protection water service line to existing 12" PVC water main via tapping sleeve with (2) 12" gate valves on the main and (1) 6" gate valve on the service line. Install 90 LF 6" Dia. C900 PVC Fire Protection Water Service Line to building stub W5.
- W5 Connect fire protection water service line to building
- W6 Approximate location Fire Department Connection

**Gas Service Line Construction Notes**

- G1 Connect gas service line to gas main. Contractor to coordinate with spire energy. Install 80 LF 2.5" Dia. gas service line to building gas line stub.
- G2 Connect gas service line to building stub

**Storm Sewer Construction Notes**

- ST1 Connect 12" HDPE pipe to structure 4804 via core and grout,  $\bar{E}$ =814.99. Install 42 LF 12" Dia. HDPE Pipe @ 2% to roof drain stub ST2.
- ST2 Connect 12" HDPE to roof drain building stub,  $\bar{E}$ =815.83

**Notes:**

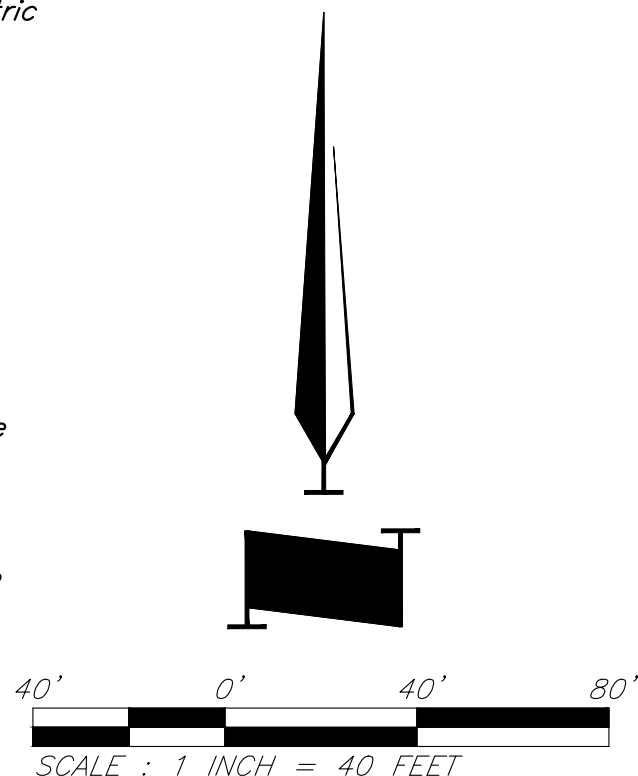
- Pipe length called out is from center of structure to center of structure. Payment for pipe length is from inside face to inside face of structure.
- Storm Sewer Structure Station offset and coordinates based on center of structure. Top elevations are top center of lid.
- Tops on all in grade inlets shall maintain street slope, low point inlets to be set level.
- Fire department connection locations are preliminary and subject to change upon final design. IFC distance requirements for FDCs shall be met with final design.
- Water meter size is preliminary and subject to change upon final design. MEP plan shall govern meter sizing.

**General Utility Notes**

- See Sheet C006 for Construction Details.
- Contractor to deflect conduits as necessary to avoid conflicts with other utilities.
- Contractor shall coordinate with the Surveyor to leave trenches open for collecting survey data for record drawings.
- Water line minimum burial depth shall be 42 inches.
- Gas line to be constructed by Spire.
- 3" Dia. HDPE water service line shall be AWWA C901 4710 DR11 PC200.
- HDPE Storm sewer pipe shall be ADS N-12.

**Legend**

- W Proposed Water Line
- Proposed Storm Sewer
- SAN Proposed Sanitary Sewer
- Paragon Parkway
- Paragon Star Village
- GAS Proposed Gas Line
- UGE Proposed Underground Electric
- UGT Proposed Telecom
- Proposed Underdrain
- Proposed Building
- Proposed HD Asphalt Surface
- Proposed LD Asphalt Surface
- Proposed Concrete



CIVIL ENGINEERING  
GBA  
9801 Renner Boulevard  
Lenexa, KS 66219  
913.492.0400  
www.gbateam.com  
MO Certificate of Authority # 000133

LANDSCAPE ARCHITECTURE  
LAND3 Studio, LLC  
317 SE Main  
Lee's Summit, MO 64063  
www.land3studio.com  
MO Certificate of Authority # 2008001860

LANDSCAPE ARCHITECTURE  
Hoerr Schaudt Landscape Architects  
2100 Central Street, Suite 01C  
Kansas City, MO 64108  
816.510.0438  
www.hoerschaudt.com  
MO Certificate of Authority #201904088

MEP ENGINEERING  
HENDERSON ENGINEERS, Inc.  
8345 Lenexa Drive  
Lenexa, KS 66214  
913.742.5000  
www.hei-eng.com  
Missouri Certificate of Authority # 000556

ARCHITECTURE  
FINKLE + WILLIAMS Architecture  
8787 Renner Boulevard, Suite 100  
Lenexa, KS 66219  
913.495.1550  
www.finklewilliams.com  
Missouri Certificate of Authority #F00453304

PROJECT:

**Paragon Star Village**  
1401 NW View High Dr, Lee's Summit, MO 64081

Issued for Bid - Package 11 - Lot 20/HUB Building  
Internal Review

ISSUE:

PROFESSIONAL SEAL:



DRAWING TITLE:

**Utility Plan**

JOB NO: 1249 SCALE:  
DATE: 06.21.2021 DRAWN BY: JRH

SHEET NO:

**C005**