





C:\Users\David\esrvicde\MAC\_Temp\e\_Client Standards\BTR\_CoopersHawk\P\_Sheets Standards\_Details\_Schedules\_Working to Print\21-0004 CH - Lees Summit\21-Lees P100.dwg, P101, 8/17/2021 2:03 PM, David

DRAIN AND CLEAN OUT SCHEDULE									
TAG	FINISH		PRIMARY STRAINER		OUTLET SIZE	LOCATION	MANUFACTURER AND MODEL	REMARKS	
	BODY	TOP	SIZE	TYPE					
FD-1	CAST IRON	NICKLE BRONZE	5"	ADJUSTABLE	3"	TOILET ROOMS	JAY R. SMITH # 2000SL	PROVIDE WITH FLASHING CLAMP. PROVIDE MECHANICAL TRAP SEAL.	
FD-2	CAST IRON	NICKLE BRONZE	6"	ADJUSTABLE	3"	KITCHEN & BAR AREA	JAY R. SMITH # 2000SL	PROVIDE WITH FLASHING CLAMP & PROVIDE MECHANICAL TRAP SEAL.	
FD-3	CAST IRON	NICKLE BRONZE	6"	ADJUSTABLE	3"	MECHANICAL ROOM	JAY R. SMITH # 3510	PROVIDE WITH FLASHING CLAMP, 4" ROUND FUNNEL.	
FD-4	CAST IRON	NICKLE BRONZE	8"	ADJUSTABLE	4"	MECHANICAL ROOM	JAY R. SMITH # 3020	8" ROUND X 3" DEEP CAST IRON BODY WITH ACID RESISTANT ENAMELED INTERIOR WITH FLANGE, FLASHING RING, HALF GRATE & BOTTOM DOME & MECHANICAL TRAP SEAL.	
FS-1	CAST IRON		12" X 12"	ADJUSTABLE	4"	KITCHEN & BAR AREA	ZURN # Z1900	12" X 12X 6" DEEP CAST IRON BODY WITH ACID RESISTANT ENAMELED INTERIOR, HALF GRATE, FLANGE & FLASHING RING.	
FS-2	CAST IRON		12" X 12"	ADJUSTABLE	3"	KITCHEN & BAR AREA	ZURN # Z1900	12" X 12X 6" DEEP CAST IRON BODY WITH ACID RESISTANT ENAMELED INTERIOR, HALF GRATE, FLANGE & FLASHING RING.	
FS-3	CAST IRON		8" X 8"	ADJUSTABLE	3"	KITCHEN & BAR AREA	ZURN # Z1910	8" X 8X 6" DEEP CAST IRON BODY WITH ACID RESISTANT ENAMELED INTERIOR, HALF GRATE, FLANGE & FLASHING RING.	
RD-1	CAST IRON	CAST IRON DOME		ADJUSTABLE	4"	ROOF	JAY R. SMITH # 1010	WITH CAST BODY WITH SUMP RECIEVER, UNDERDECK CLAMP, FLASHING RING & CAST IRON DOME.	
RD-2	CAST IRON	CAST IRON DOME		ADJUSTABLE	6"	ROOF	JAY R. SMITH # 1010	WITH CAST BODY WITH SUMP RECIEVER, UNDERDECK CLAMP, FLASHING RING & CAST IRON DOME.	
RD-3	CAST IRON	CAST IRON DOME		ADJUSTABLE	8"	ROOF	JAY R. SMITH # 1010	WITH CAST BODY WITH SUMP RECIEVER, UNDERDECK CLAMP, FLASHING RING & CAST IRON DOME.	
ORD-1	CAST IRON	CAST IRON DOME		ADJUSTABLE	4"	ROOF	JAY R. SMITH # 1070	WITH CAST BODY WITH SUMP RECIEVER, OVERFLOW DAM, UNDERDECK CLAMP, FLASHING RING & CAST IRON DOME.	
ORD-2	CAST IRON	CAST IRON DOME		ADJUSTABLE	6"	ROOF	JAY R. SMITH # 1070	WITH CAST BODY WITH SUMP RECIEVER, OVERFLOW DAM, UNDERDECK CLAMP, FLASHING RING & CAST IRON DOME.	
ORD-3	CAST IRON	CAST IRON DOME		ADJUSTABLE	8"	ROOF	JAY R. SMITH # 1070	WITH CAST BODY WITH SUMP RECIEVER, OVERFLOW DAM, UNDERDECK CLAMP, FLASHING RING & CAST IRON DOME.	
DSN-1	CAST IRON				4"		JAY R. SMITH # 1770	CAST IRON BODY & FLANGE & BIRD SCREEN.	
DSN-2	CAST IRON				6"		JAY R. SMITH # 1770	CAST IRON BODY & FLANGE & BIRD SCREEN.	
DSN-3	CAST IRON				8"		JAY R. SMITH # 1770	CAST IRON BODY & FLANGE & BIRD SCREEN.	
FCO	CAST IRON	NICKLE BRONZE	SEE PLAN	SCORLATED	SEE PLAN	AS SHOWN ON DRAWING	JAY R. SMITH #4020		

DOMESTIC NATURAL GAS WATER HEATER SCHEDULE								
MARK	STORAGE CAPACITY (GALLONS)	RATE OF RECOVERY (100 F RISE)	GAS INPUT/OUTPUT (BTU/H)	GAS SIZE AND PRESSURE (IN. W.C.)	VENT INTAKE/EXHAUST (INCHES)	UNIT EFFICIENCY (%)	UNIT LOCATION	MANUFACTURER & MODEL NO.
WH-1	1	3.8	199,000	4" WC,MN/14" WC,MK	3"4"	90	MEZZANINE	RINNAI CU199 (QUANTITY 7)
REMARKS: TANKLESS WATER HEATER-RINNAI WALL HUNG PACKAGED RACK-MOUNTED SYSTEM WITH TWO (2), (2) UNIT MODEL TRW02CUI HEATERS AND ONE (1), (3) UNIT TRW03CUI HEATERS PRE-PIPED WITH ALL VALVES AND SPECIALITIES. PROVIDE WITH CONTROL PANELS, ENGINE CONTROL CABLE AND INTERLOCKING WIRING TO CONTROL MULTIPLE HEATERS. PROVIDE WITH COMMON INTAKE AND EXHAUST VENTING PACKAGE (1 COMMON VENTING PACKAGE PER INDIVIDUAL WATER HEATER (7 TOTAL WATER HEATER WITH ROOF TERMINATION ASSEMBLY). INTALL PER MANUFACTURER RECOMMENDATIONS. PLUMBING CONTRACTOR SHALL HAVE WATER HEATERS MANUFACTURER'S TECHNICIAN FOR START UP AND INITIAL PROGRAMING OF ALL WATER HEATERS WATER HEATER SHALL HAVE ASME RATED T&P RELIEF VALVE. PROVIDE WITH ACID NEUTRALIZATION KIT. PROVIDE PREFABRICATED CPVC OR PVC CONDENSATE DRAIN & MANFOLD PIPING.								

DOMESTIC EXPANSION TANK SCHEDULE									
MARK	TANK DIMENSIONS		TANK CAPACITY (GALLONS)	SYSTEM CONNECTION SIZE (INCHES)	CHARGING VALVE	EMPTY WEIGHT (LBS)	VESSEL CERT.	UNIT SERVES	REMARKS
	DIAMETER (INCHES)	LENGTH (INCHES)							
TET-1	8"	13"	2	3/4"		5	X	WH-1	THERM-X-TROL MODEL WST-5

DOMESTIC HOT WATER CIRCULATION PUMP SCHEDULE								
MARK	PUMP CHARACTERISTICS		PUMP STYLE	HOT WATER SERVICE TEMPERATURE (DEGREES, F.)	ELECTRICAL CHARACTERISTICS			REMARKS
	FLOW (GPM)	HEAD (FT./PSI)			MOTOR HP	RPM	VOLTI/PH/ HZ	
RP-1	10	10	IN-LINE CIRC	120-140	0.08		120/1/60	WATER HEATER RM GRUNDFOS #UPS 26-99(S) F, 3 SPEED, CIRCULATION PUMP. CAST IRON BODY INLINE. PUMP BRASS FITTED. WITH HONEYWELL L6006C AQUASTAT & TIMER

DOMESTIC BOOSTER PUMP SCHEDULE								
MARK	PUMP CHARACTERISTICS		PUMP STYLE	ELECTRICAL CHARACTERISTICS			UNIT LOCATION	REMARKS
	FLOW (GPM)	HEAD (FT./PSI)		MOTOR HP	RPM	VOLTI/PH/ HZ		
PP-1	90	70FT/30 PSI	FLOOR MOUNTED	3.00		208/3/60	SPRINKLER ROOM	METROPOLITAN "METRO VARIPAC" MODEL HES-VS-200S-20B SIMPLEX VARIABLE-SPEED PUMP SYSTEM DESIGNED FOR A DISCHARGE PRESSURE BOOST OF 30-PSI, ABOVE THE NET SUCTION PRESSURE. WITH ONE (1) 15-GALLON ADJACENT HYDRO-PNEUMATIC TANK, ONE (1) LOCAL SUCTION-PRESSURE TRANSDUCER, ONE (1) LOCAL DISCHARGE-PRESSURE TRANSDUCER, AND ONE (1) VARIABLE FREQUENCY INVERTOR WITH INTEGRAL POWER-DISCONNECT SHALL BE PROVIDED. THE PUMP SHALL BE OF THE ALL-STAINLESS-STEEL END-SUCTION TYPE, AND 80-FT MINIMUM SHUT OFF HEAD @ ZERO-GPM. IT SHALL BE COUPLED TEFC PREMIUM-EFFICIENCY MOTOR. THE PIPING SHALL INCLUDE A LUG-STYLE BUTTERFLY VALVE ON THE INLET & OUTLET, AS WELL AS A SILENT CHECK VALVE ON THE DISCHARGE. THE SYSTEM SHALL BE FACTORY FLOW-TESTED & CERTIFIED.

PLUMBING FIXTURE SCHEDULE (FINAL FIXTURE SELECTION SHALL BE BY OWNER)												
TAG NO.	QTY.	DESCRIPTION	CONNECTION				ACCESSORIES	MANUFACTURER & MODEL NO.	COMMENTS			
			WASTE	VENT	COLD	HOT						
WC-1	3	WATER CLOSET, ELONGATED FRONT, FLUSH VALVE TYPE, (1.6 GPF)	4"	2"	1 1/4"		FIXTURE	AMERICAN STANDARD MADERA # 2234.001	FLOOR MOUNTED			
							VALVE	TOTO TET1LA32#CP	HYDROPOWER SELF-GENERATING SENSOR OPERATED WITH MANUAL OVERRIDE BUTTON			
							SEAT	BEMIS 2155SCT	ANITMICROBIAALLY TREATED, OPEN FRONT SEAT LESS COVER			
WC-2	5	WATER CLOSET, ELONGATED FRONT, FLUSH VALVE TYPE, ADA, (1.6 GPF)	4"	2"	1 1/4"		FIXTURE	AMERICAN STANDARD MADERA # 3043.001	FLOOR MOUNTED			
							VALVE	TOTO TET1LA32#CP	HYDROPOWER SELF-GENERATING SENSOR OPERATED WITH MANUAL OVERRIDE BUTTON			
							SEAT	BEMIS 2155SCT	ANITMICROBIAALLY TREATED, OPEN FRONT SEAT LESS COVER			
UR-1	1	URINAL ( .5 GPM)		2"	1 1/2"	1"	FIXTURE	AMERICAN STANDARD WASHBROOK # 6590.001	WALL MOUNTED MOUNTED			
							VALVE	TOTO TEU1LA12#CP	HYDROPOWER SELF-GENERATING SENSOR OPERATED WITH MANUAL OVERRIDE BUTTON			
							CARRIER	JAY R. SMITH	COMMERCIAL HEAVY DUTY CHAIR CARRIER			
UR-2	1	URINAL ADA ( .5 GPM)		2"	1 1/2"	1"	FIXTURE	AMERICAN STANDARD WASHBROOK # 6590.001	WALL MOUNTED MOUNTED			
							VALVE	TOTO TEU1LA12#CP	HYDROPOWER SELF-GENERATING SENSOR OPERATED WITH MANUAL OVERRIDE BUTTON			
							CARRIER	JAY R. SMITH	COMMERCIAL HEAVY DUTY CHAIR CARRIER			
L-1	6	LAVATORY	1 1/2"	1 1/2"	1/2"	1/2"	FIXTURE	KOHLER LADENA # K2215	UNDERMOUNT WITH OVERFLOW & MOUNTING CLAMPS			
							TRIM	TOTO TEL101-D10E	HYDROPOWER SELF-GENERATING SENSOR OPERATED WITH MANUAL OVERRIDE BUTTON WITH THERMOSTATIC MIXING VALVE			
							SUPPLIES	SUPPLIES AND STOPS-MCGUIRE OR APPROVED EQUAL				
							INSULATION	TRUEBROLAV GUARD 2 PIPING COVERINGS	PROVIDE FOR HOT WATER SUPPLY AND DRAIN/TRAP ASSEMBLY			
							TRAP	SUPPLIES AND STOPS-MCGUIRE OR APPROVED EQUAL	CAST GRID DRAIN WITH OFF SET P TRAP			
L-2	2	LAVATORY	1 1/2"	1 1/2"	1/2"	1/2"	FIXTURE	AMERICAN STANDARD LUCERENE # 0355.027	WALL MOUNTED WITH FAUCET HOLE 4" ON CENTER			
							FAUCET	ZURN Z81104-XL	CENTERSET WITH WRIST BLADE			
							SUPPLIES	SUPPLIES AND STOPS-MCGUIRE OR APPROVED EQUAL				
							TRAP	SUPPLIES AND STOPS-MCGUIRE OR APPROVED EQUAL	CAST GRID DRAIN WITH OFF SET P TRAP			
							CARRIER	JAY R. SMITH	COMMERCIAL HEAVY DUTY CHAIR CARRIER			
							STRAINER	CAST GRID DRAIN				
MS-1	1	MOP SINK	3"	2"	3/4"	3/4"	FIXTURE	FIAT TERRAZZO MOP SERVICE BASIN SB-3030	30" X 30" X 6" HIGH WITH DRAIN STRAINER			
							FAUCET	ZURN Z843M1-XL # 305-VBCP	WITH VACUUM BREAKER			
							ACCESSORY	FIAT #B32AA (HOSE & HOSE BRACKET); #B33AA (SILICONE SEALANT) & STAINLESS STEEL WALL GUARD				

PLUMBING FIXTURE SCHEDULE (FINAL FIXTURE SELECTION SHALL BE BY OWNER)												
TAG NO.	QTY.	DESCRIPTION	CONNECTION				ACCESSORIES	MANUFACTURER & MODEL NO.	COMMENTS			
			WASTE	VENT	COLD	HOT						
WC-1	3	WATER CLOSET, ELONGATED FRONT, FLUSH VALVE TYPE, (1.6 GPF)	4"	2"	1 1/4"		FIXTURE	AMERICAN STANDARD MADERA # 2234.001	FLOOR MOUNTED			
							VALVE	TOTO TET1LA32#CP	HYDROPOWER SELF-GENERATING SENSOR OPERATED WITH MANUAL OVERRIDE BUTTON			
							SEAT	BEMIS 2155SCT	ANITMICROBIAALLY TREATED, OPEN FRONT SEAT LESS COVER			
WC-2	5	WATER CLOSET, ELONGATED FRONT, FLUSH VALVE TYPE, ADA, (1.6 GPF)	4"	2"	1 1/4"		FIXTURE	AMERICAN STANDARD MADERA # 3043.001	FLOOR MOUNTED			
							VALVE	TOTO TET1LA32#CP	HYDROPOWER SELF-GENERATING SENSOR OPERATED WITH MANUAL OVERRIDE BUTTON			
							SEAT	BEMIS 2155SCT	ANITMICROBIAALLY TREATED, OPEN FRONT SEAT LESS COVER			
UR-1	1	URINAL ( .5 GPM)		2"	1 1/2"	1"	FIXTURE	AMERICAN STANDARD WASHBROOK # 6590.001	WALL MOUNTED MOUNTED			
							VALVE	TOTO TEU1LA12#CP	HYDROPOWER SELF-GENERATING SENSOR OPERATED WITH MANUAL OVERRIDE BUTTON			
							CARRIER	JAY R. SMITH	COMMERCIAL HEAVY DUTY CHAIR CARRIER			
UR-2	1	URINAL ADA ( .5 GPM)		2"	1 1/2"	1"	FIXTURE	AMERICAN STANDARD WASHBROOK # 6590.001	WALL MOUNTED MOUNTED			
							VALVE	TOTO TEU1LA12#CP	HYDROPOWER SELF-GENERATING SENSOR OPERATED WITH MANUAL OVERRIDE BUTTON			
							CARRIER	JAY R. SMITH	COMMERCIAL HEAVY DUTY CHAIR CARRIER			
L-1	6	LAVATORY	1 1/2"	1 1/2"	1/2"	1/2"	FIXTURE	KOHLER LADENA # K2215	UNDERMOUNT WITH OVERFLOW & MOUNTING CLAMPS			
							TRIM	TOTO TEL101-D10E	HYDROPOWER SELF-GENERATING SENSOR OPERATED WITH MANUAL OVERRIDE BUTTON WITH THERMOSTATIC MIXING VALVE			
							SUPPLIES	SUPPLIES AND STOPS-MCGUIRE OR APPROVED EQUAL				
							INSULATION	TRUEBROLAV GUARD 2 PIPING COVERINGS	PROVIDE FOR HOT WATER SUPPLY AND DRAIN/TRAP ASSEMBLY			
							TRAP	SUPPLIES AND STOPS-MCGUIRE OR APPROVED EQUAL	CAST GRID DRAIN WITH OFF SET P TRAP			
L-2	2	LAVATORY	1 1/2"	1 1/2"	1/2"	1/2"	FIXTURE	AMERICAN STANDARD LUCERENE # 0355.027	WALL MOUNTED WITH FAUCET HOLE 4" ON CENTER			
							FAUCET	ZURN Z81104-XL	CENTERSET WITH WRIST BLADE			
							SUPPLIES	SUPPLIES AND STOPS-MCGUIRE OR APPROVED EQUAL				
							TRAP	SUPPLIES AND STOPS-MCGUIRE OR APPROVED EQUAL	CAST GRID DRAIN WITH OFF SET P TRAP			
							CARRIER	JAY R. SMITH	COMMERCIAL HEAVY DUTY CHAIR CARRIER			
							STRAINER	CAST GRID DRAIN				
MS-1	1	MOP SINK	3"	2"	3/4"	3/4"	FIXTURE	FIAT TERRAZZO MOP SERVICE BASIN SB-3030	30" X 30" X 6" HIGH WITH DRAIN STRAINER			
							FAUCET	ZURN Z843M1-XL # 305-VBCP	WITH VACUUM BREAKER			
							ACCESSORY	FIAT #B32AA (HOSE & HOSE BRACKET); #B33AA (SILICONE SEALANT) & STAINLESS STEEL WALL GUARD				

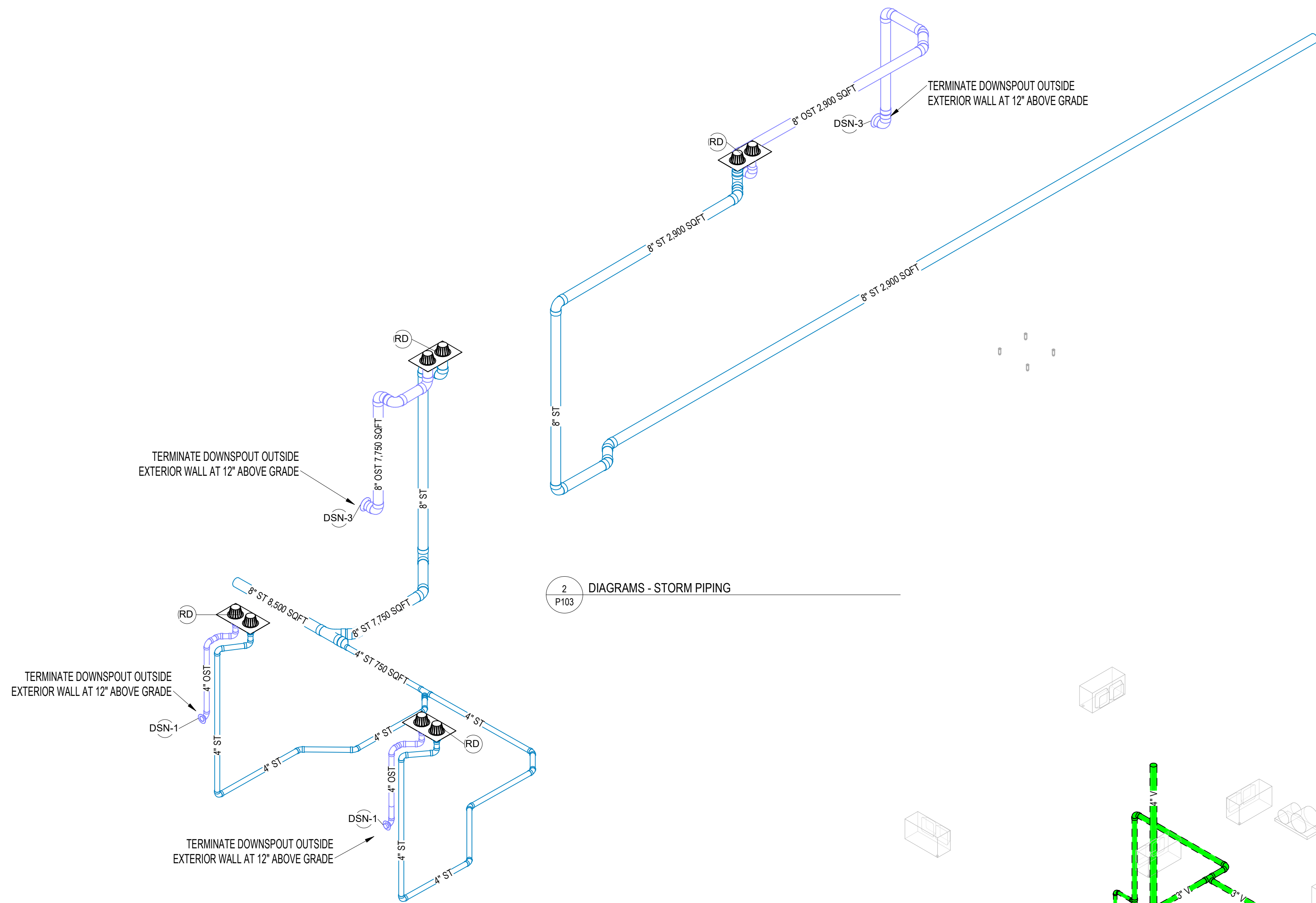
PLUMBING MATERIALS SCHEDULE						
PLUMBING SYSTEM	COPPER / COPPER ALLOY TUBING AND FITTINGS TYPE "L"	CAST (DUCTILE) IRON WATER PIPE AND FITTINGS	CAST IRON SOIL PIPE AND FITTINGS	POLYVINYL CHLORIDE (PVC) PIPE AND FITTINGS	REMARKS	
	(ASTM B 88)	(ASTM A 377)	(ASTM A 74) (CISPI 301)	(ASTM D 2665)		
WATER SUPPLY SYSTEM						
SERVICE WATER SUPPLY	X				DUCTILE IRON WATER PIPING AND FITTING, AWWA G151 CLASS 56, CEMENT MORTAR LINING C104	
BUILDING DISTRIBUTION WATER SUPPLY	X				FOR UNDER GROUND PIPING PROVIDE TYPE K PIPING	
PLUMBING DRAINAGE SYSTEMS						
SERVICE SANITARY SEWER & KITCHEN WASTE	X		X	X	CAST IRON NO HUB PIPING WITH STAINLESS STEEL FITTING	
BUILDING SANITARY WASTE SEWER & KITCHEN WASTE			X	X	CAST IRON NO HUB PIPING WITH STAINLESS STEEL FITTING	
PLUMBING VENT SYSTEMS						
BUILDING SANITARY WASTE VENT			X	X	COPPER TYPE L WITH DRAINAGE FITTING OR CAST IRON NO HUB PIPING WITH STAINLESS STEEL FITTING	
STORM WATER DRAINAGE SYSTEMS						
SERVICE STORM DRAINAGE			X	X	CAST IRON NO HUB PIPING WITH STAINLESS STEEL FITTING	
BUILDING STORM DRAINAGE UNDERGROUND			X	X	CAST IRON NO HUB PIPING WITH STAINLESS STEEL FITTING	
1. ALL MATERIALS SHALL CONFORM TO STANDARD LISTINGS AS DICTATED BY LOCAL CODES & LANDLORD. 2. THE CONTRACTOR SHALL PROVIDE AND INSTALL MATERIAL IN ACCORDANCE WITH THE LOCAL CODE REQUIREMENTS 3. THE CONTRACTOR MAY PROVIDE ALTERNATE MATERIAL IF THE FOLLOWING IS PROVIDED: a. THE CONTRACTOR SHALL SUBMIT (WITH BASE BID) A LIST OF MATERIALS TO BE USED IN THIS PROJECT. b. THE CONTRACTOR SHALL STATE THE MATERIAL USED WILL MEET LOCAL CODES, AND THERE WILL BE NO ADDITIONAL COST TO PROVIDE ALTERNATE MATERIALS THAT MEET LOCAL CODES. 4. AT DRAIN RECEPTOR OF THE FOLLING EQUIPMENT (DISHWASHER, KETTLE DRAIN, KETTLE, PASTA COOKER & STEAMER): THE INITIAL 10 FEET OF DRAINAGE TRAPS & PIPING SHALL BE CAST IRON.						



8/17/2021 14:05:01 BIM 360//021038 - CooperHawk - Lees Summit021-0064 CH PFP\_Central\_v01.rvt

1_Working_Plumbing Schedule																				
FEI	TM Util	Item No.	Qty	Description	Supply						Waste						Gas			Plumbing Remarks
					Hot Water		Cold Water		Filtered Water		Direct		Indirect		Size	Input	HGT AFF			
					Size	HGT AFF	Size	HGT AFF	Size	HGT AFF	Size	HGT AFF	Size	IW#						
Yes	1	4	4	UNDERBAR DRAINBOARD/GLASS STORAGE									1/2"	(1)IW19, (1)IW23, (2)IW25					NOTE 6	
Yes	1	5	1	STANDARD ICE CHEST W/ COLD PLATE									1/2"	IW25					NOTE 6	
Yes	1	7	1	UNDERBAR HAND SINK UNIT	1/2"	1' - 0"	1/2"	1' - 0"					1 1/2"	IW25					NOTE 1, 6	
Yes	12	8	2	UNDERBAR BLENDER STATION	1/2"	1' - 0"	1/2"	1' - 0"	0"	0' - 0"	0"	0' - 0"	1 1/2"	(1)IW23, (1)IW24	0"	0.0 Btu/h	0' - 0"		NOTE 6	
Yes	1	9	1	UNDERBAR 3-COMP SINK UNIT	1/2"	1' - 0"	1/2"	1' - 0"					1 1/2"	IW24					NOTE 1, 6, 7	
Yes	1	10	1	UNDERBAR ICE CHEST									1/2"	IW25					NOTE 6	
Yes	1	10.1	1	UNDERBAR ICE CHEST									1/2"	IW19					NOTE 6	
Yes	12	11	1	4 DOOR REMOTE BACKBAR REFRIGERATED CABINET									1"	IW20					NOTE 6	
Yes	12	11.1	1	REFRIGERATED BACKBAR CABINET CONDENSING UNIT	0"	0' - 0"	0"	0' - 0"	0"	0' - 0"	0"	0' - 0"	0"		0"	0.0 Btu/h	0' - 0"		REFER TO GENERAL REFRIGERATION NOTES	
Yes	12	12	1	3 DOOR REMOTE BACKBAR REFRIGERATED CABINET									1"	IW21					NOTE 6	
Yes	12	12.1	1	REFRIGERATED BACKBAR CABINET CONDENSING UNIT	0"	0' - 0"	0"	0' - 0"	0"	0' - 0"	0"	0' - 0"	0"		0"	0.0 Btu/h	0' - 0"		REFER TO GENERAL REFRIGERATION NOTES	
Yes	12	12.2	1	2 DOOR REFRIGERATED BACKBAR CABINET									1"	IW21					NOTE 6	
Yes	1	13	1	PASS-THRU ICE BIN	0"	0' - 0"	0"	0' - 0"	0"	0' - 0"	0"	0' - 0"	1/2"	IW19	0"	0.0 Btu/h	0' - 0"		NOTE 6	
Yes	1	13B	1	PERFORATED DRAIN PAN									1/2"	IW19						
Yes	1	14A	1	GLASS RINSER W/ DRAIN PAN			1/2"	0' - 0"	0"	0' - 0"	0"	0' - 0"	1/2"		0"	0.0 Btu/h	0' - 0"			
Yes	1	15A	1	WINE DRAIN PAN			1/2"	0' - 0"	0"	0' - 0"	0"	0' - 0"	1/2"		0"	0.0 Btu/h	0' - 0"			
Yes	1	17	2	24" UNDERBAR DRAINBOARD UNIT	0"	0' - 0"	0"	0' - 0"	0"	0' - 0"	0"	0' - 0"	1 1/2"	(2) IW24	0"	0.0 Btu/h	0' - 0"		NOTE 6	
Yes	1	17.1	1	18" UNDERBAR DRAINBOARD UNIT	0"	0' - 0"	0"	0' - 0"	0"	0' - 0"	0"	0' - 0"	1 1/2"	IW25	0"	0.0 Btu/h	0' - 0"		NOTE 6	
Yes	1	19.1	1	DROP-IN SINK	1/2"	1' - 6"	1/2"	1' - 6"					1 1/2"	IW13					NOTE 1, 6	
Yes	1	19.2	2	DROP-IN ICE BIN									1 1/2"	(1)IW11, (1)IW13					NOTE 6	
Yes	1	19.4	2	GLASS FILLER FAUCET	0"	0' - 0"	1/2"	1' - 6"			0"	0' - 0"	1"	(1)IW11, (1)IW13					NOTE 1, 6	
Yes	1	20	1	DIPPERWILL	0"	0' - 0"	1/2"	1' - 6"	0"	0' - 0"	0"	0' - 0"	1"	IW6	0"	0.0 Btu/h	0' - 0"		NOTE 6	
Yes	12	27.1	1	WALK-IN MEAT COOLER EVAPORATOR COIL	0"	0' - 0"	0"	0' - 0"	0"	0' - 0"	0"	0' - 0"	1"	IW1	0"	0.0 Btu/h	0' - 0"			
Yes	12	27.2	1	WALK-IN MEAT COOLER CONDENSING UNIT	0"	0' - 0"	0"	0' - 0"	0"	0' - 0"	0"	0' - 0"	0"		0"	0.0 Btu/h	0' - 0"		REFER TO GENERAL REFRIGERATION NOTES	
Yes	12	28.1	1	WALK-IN FREEZER EVAPORATOR COIL	0"	0' - 0"	0"	0' - 0"	0"	0' - 0"	0"	0' - 0"	1"	IW1	0"	0.0 Btu/h	0' - 0"			
Yes	12	28.2	1	WALK-IN FREEZER COOLER CONDENSING UNIT	0"	0' - 0"	0"	0' - 0"	0"	0' - 0"	0"	0' - 0"	0"		0"	0.0 Btu/h	0' - 0"		REFER TO GENERAL REFRIGERATION NOTES	
Yes	12	29.1	2	WALK-IN PRODUCE COOLER EVAPORATOR COIL	0"	0' - 0"	0"	0' - 0"	0"	0' - 0"	0"	0' - 0"	1"	IW1	0"	0.0 Btu/h	0' - 0"			
Yes	12	29.2	1	WALK-IN PRODUCE COOLER CONDENSING UNIT	0"	0' - 0"	0"	0' - 0"	0"	0' - 0"	0"	0' - 0"	0"		0"	0.0 Btu/h	0' - 0"		REFER TO GENERAL REFRIGERATION NOTES	
Yes	12	32.1	1	BEER COOLER EVAPORATOR COIL	0"	0' - 0"	0"	0' - 0"	0"	0' - 0"	0"	0' - 0"	1"	IW22	0"	0.0 Btu/h	0' - 0"		REFER TO GENERAL REFRIGERATION NOTES	
Yes	12	32.2	1	BEER COOLER CONDENSING UNIT	0"	0' - 0"	0"	0' - 0"	0"	0' - 0"	0"	0' - 0"	0"		0"	0.0 Btu/h	0' - 0"		REFER TO GENERAL REFRIGERATION NOTES	
Yes	12	34	2	HOT FOOD SERVING COUNTER	1/2"	1' - 6"	0"	0' - 0"	0"	0' - 0"	0"	0' - 0"	1"	(1)IW7, (1)IW8	0"	0.0 Btu/h	0' - 0"		NOTE 1, 6; HW FOR FILL FAUCET	
Yes	1	36	8	HAND SINK	1/2"	1' - 6"	1/2"	1' - 6"			1 1/2"	2' - 0"							NOTE 1	
Yes	12	38.3	3	DROP-IN HOT WELL	0"	0' - 0"	0"	0' - 0"	0"	0' - 0"	0"	0' - 0"	3/4"	IW12	0"	0.0 Btu/h	0' - 0"		NOTE 6, 7; PC TO MANIFOLD DRAIN LINES WITH BALL VALVE	
Yes	1	38.4	1	2/3 ICE FOOD PAN	0"	0' - 0"	0"	0' - 0"	0"	0' - 0"	0"	0' - 0"	1"	IW12		0.0 Btu/h	0' - 0"		NOTE 6	
Yes	1	39	1	36" (6) BURNER MODULAR RANGE											3/4"	210000.0 Btu/h	2' - 6"		NOTE 4	
Yes	12	43	1	36" RANGE W/ CONVECTION OVEN											3/4"	240000.0 Btu/h	2' - 6"		NOTE 4	
Yes	1	44	1	30" X 24" FLOOR TROUGH	0"	0' - 0"	0"	0' - 0"	0"	0' - 0"	3"	0' - 0"	0"		0"	0.0 Btu/h	0' - 0"		NOTE 5; STUB UP DW	
Yes	12	47	1	36" COUNTERTOP GRIDDLE											3/4"	82005.0 Btu/h	2' - 6"		NOTE 4	
Yes	12	48	1	DECK BROILER											3/4"	208000.0 Btu/h	2' - 6"		NOTE 4	
Yes	1	49	1	48" COUNTERTOP GRIDDLE	0"	0' - 0"							0"		3/4"	120000.0 Btu/h	2' - 6"		NOTE 4	
Yes	1	50	1	SALAMANDER									0"		3/4"	40000.0 Btu/h	2' - 6"		NOTE 4	
Yes	1	53	3	45 LB GAS FRYER	0"	0' - 0"	0"	0' - 0"	0"	0' - 0"	0"	0' - 0"	0"		3/4"	122000.0 Btu/h	2' - 6"		NOTE 4	
Yes	12	56	1	PASTA COOKER	1/2"	1' - 0"	0"	0' - 0"	0"	0' - 0"	0"	0' - 0"	1 1/2"	IW9	3/4"	111000.0 Btu/h	2' - 6"		NOTE 4, 6; PC TO PROVIDE 8" FLOOR SINK	
Yes	1	56.1	1	DRAIN WATER TEMPERING KIT - BY VENDOR	0"	0' - 0"	3/4"	1' - 0"	0"	0' - 0"	0"	0' - 0"	0"		0"	0.0 Btu/h	0' - 0"		NOTE 12	
Yes	1	57	1	98" X 12" FLOOR TROUGH	0"	0' - 0"	0"	0' - 0"	0"	0' - 0"	3"	0' - 0"	0"		0"	0.0 Btu/h	0' - 0"		NOTE 5; STUB UP DW	
Yes	12	58	1	EXHAUST HOOD-MAIN COOKLINE	0"	0' - 0"							0"						REFER TO HOOD DWGS FOR ADDITIONAL INFO	
Yes	12	59	1	EXHAUST HOOD - PREP LINE	0"	0' - 0"							0"						REFER TO HOOD DWGS FOR ADDITIONAL INFO	
Yes	12	62	1	DOUBLE CONVECTION OVEN											3/4"	144000.0 Btu/h	2' - 6"		NOTE 4	
Yes	12	64	1	BOILERLESS STEAMER W/ WATER FILTER																
Yes	1	64.1	1	BOILERLESS STEAMER (DWT UNFILTERED)	0"	0' - 0"	3/4"	1' - 6"	0"	0' - 0"	0"	0' - 0"	0"		0"	0.0 Btu/h	0' - 0"			
Yes	1	65	1	COUNTERTOP 6 BURNER RANGE											3/4"	198000.0 Btu/h	2' - 6"		NOTE 4	
Yes	12	67	1	30 GAL TILTING SKILLET	0"	0' - 0"	1/2"	2' - 0"							1/2"	104000.0 Btu/h	2' - 6"		NOTE 4; TEE CW TO 2 CONNT. FAUCET AND DWT	
Yes	1	67.1	1	POT FILLER FAUCET	1/2"	5' - 0"	1/2"	5' - 0"											NOTE 1	
Yes	1	70	1	TWO COMPARTMENT SINK	1/2"	1' - 4"	1/2"	1' - 4"	0"	0' - 0"	0"	0' - 0"	2"	IW3	0"	0.0 Btu/h	0' - 0"		NOTE 1, 7; (2) 1-1/2" IW'S	
Yes	1	72	1	MOBILE ICE BIN	0"	0' - 0"	0"	0' - 0"	0"	0' - 0"	0"	0' - 0"	1/2"	IW5	0"	0.0 Btu/h	0' - 0"		NOTE 6	
Yes	1	77	1	THREE COMPARTMENT SINK	0"	0' - 0"	0"	0' - 0"	0"	0' - 0"	0"	0' - 0"	2"	IW15					NOTE 2, 7	
Yes	1	77.1	1	SPLASH MOUNT FAUCET	1/2"	1' - 4"	1/2"	1' - 4"	0"	0' - 0"	0"	0' - 0"	0"						NOTE 1	
Yes	1	77.2	1	SPLASH MOUNT PRE-RINSE FAUCET	1/2"	1' - 4"	1/2"	1' - 4"	0"	0' - 0"	0"	0' - 0"	0"						NOTE 1	
Yes	12	81	1	CONVEYOR TYPE DISHWASHER	1/2"	0' - 0"	0"	0' - 0"	0"	0' - 0"	0"	0' - 0"	1 1/2"	IW18	0"	0.0 Btu/h	0' - 0"		NOTE 6, 17; HW CONNECTION TO UNIT; HW FROM BOOSTER TO BE A MIN. OF 180°F	
Yes	12	81.1	1	DRAIN WATER TEMPERING KIT - BY VENDOR	0"	0' - 0"	3/4"	1' - 0"	0"	0' - 0"	0"	0' - 0"	0"		0"	0.0 Btu/h	0' - 0"		NOTE 17; FOR DRAIN WATER TEMPERING KIT SUPPLIED BY VENDOR	
Yes	12	82	1	BOOSTER HEATER	1/2"	1' - 0"	0"	0' - 0"	0"	0' - 0"	0"	0' - 0"	3/4"	IW18	0"	0.0 Btu/h	0' - 0"		NOTE 6,11, 17	
Yes	12	83	1	CONDENSATE HOOD	0"	0' - 0"	0"	0' - 0"	0"	0' - 0"	0"	0' - 0"	0"		0"	0.0 Btu/h	0' - 0"		REFER TO HOOD DWGS FOR ADDITIONAL INFO	
Yes	1	84	1	SPLASH MOUNT PRE-RINSE FAUCET	1/2"	1' - 4"	1/2"	1' - 4"	0"	0' - 0"	0"	0' - 0"	0"						NOTE 1	
Yes	1	85	1	SOILED DISHTABLE W/ SINK	0"	0' - 0"	0"	0' - 0"	0"	0' - 0"	0"	0' - 0"	1 1/2"	(1)IW16, (1)IW17	0"	0.0 Btu/h	0' - 0"		NOTE 6	
Yes	1	87	1	MOP SINK W/ FAUCET	1/2"	3' - 0"	1/2"	3' - 0"	0"											





2 DIAGRAMS - STORM PIPING  
P103

## SPECIFICATION AND SUBMITTAL

### GB-1000

100 GPM 99% Efficient Great Basin™  
Indoor/Outdoor Grease Interceptor  
DESCRIPTION: 100 GPM Polyethylene Grease Interceptor –  
1,010 gallon capacity

#### SPECIFICATIONS

##### NOTES

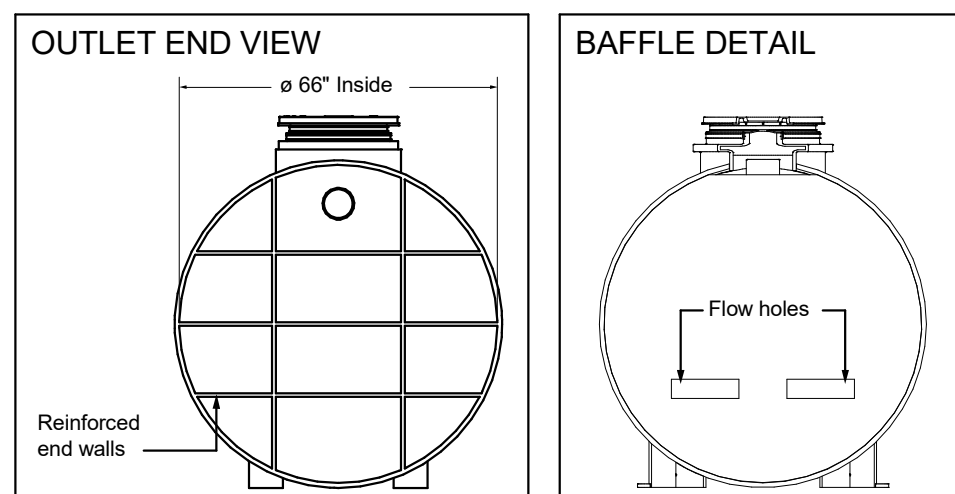
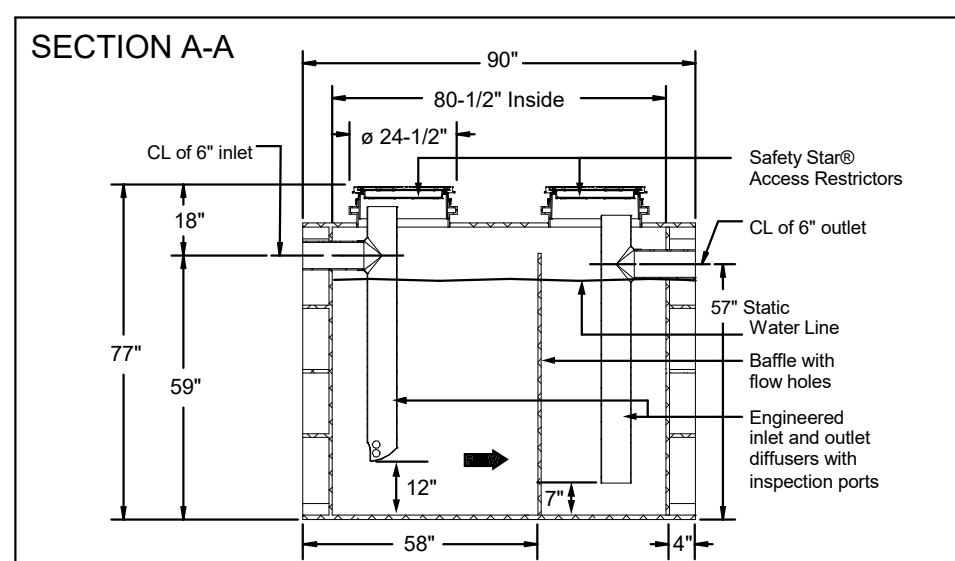
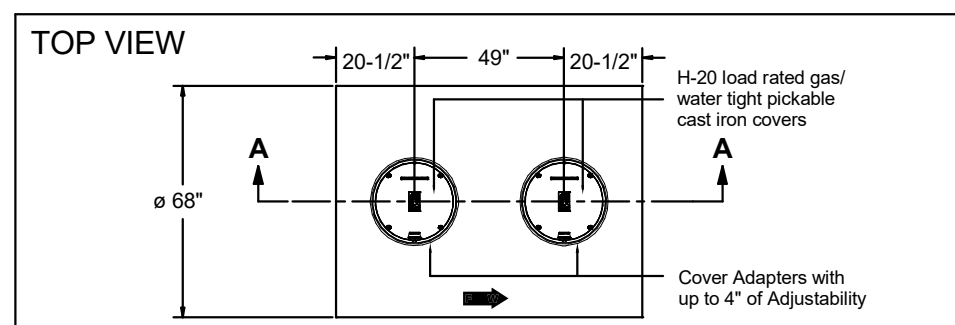
- 0" plan end inlet/outlet
- Unit weight - w/cover: 1,400 lbs.; w/out iron covers: 1,516 lbs. (for wet weight add 8.4/3 lbs.)
- Maximum operating temperature: 150°F continuous
- Capacities - Liquid: 1,010 gal.; Grease: 6,547 lbs. (894 gal.) Solids: 103 gal.
- Satisfies Miami DCFM 99% efficiency requirements; retaining 6,237 lbs. (854 gal.) of grease at 99.0% efficiency
- Buffer Flow control. For series installations, only install flow control on the first unit in the series if necessary.
- For gravity drainage applications only.
- Do not use for pressure applications.
- Cover placement allows full access to tank for proper maintenance.
- Vent not required unless per local code.
- Engineered inlet and outlet diffusers with inspection ports are removable to inspect / clean piping. For series installations, the top of the inlet diffuser on the first unit in the series must be sealed.
- Integral air relief / Anti-siphon / Sampling access.
- Adjustable cover adapters provide up to 4" of additional height.
- Flow rates are based on 2-minute drain time.
- Safety Star® access restrictor built into each cover adapter, prevents accidental entry to tanks (450 lb. rating).

##### ENGINEER SPECIFICATION GUIDE

Schier Great Basin™ grease interceptor model # GB-1000 shall be lifetime guaranteed and made in USA of seamless, molded polyethylene with minimum 3/4" uniform wall thickness. Interceptor shall be furnished for below-grade installation with adjustable cover adapter and Safety Star® access restrictor built into each cover adapter. Interceptor shall be certified to ASME A112.14.3 (Type C) and CSA B481.1. Interceptor flow rate shall be 100 GPM. Interceptor grease capacity shall be 6,237 lbs. Cover shall provide water/gas-tight seal and have minimum 18,000 lbs. load capacity.

##### CERTIFIED PERFORMANCE

Great Basin™ hydromechanical grease interceptors are third party performance-tested and listed by IAPMO to ASME A112.14.3 and CSA B481.1 grease interceptor standards and greatly exceed requirements for grease separation and storage. They are compliant to the Uniform Plumbing Code and the International Plumbing Code.



Rated Grease Capacities for Units Piped in Series

No. of Units In Series	Removal Efficiency 100 GPM - 98.8%	100 GPM - 99%
2	13,094 lbs.	12,474 lbs.
3	19,641 lbs.	18,711 lbs.
4	26,188 lbs.	24,948 lbs.

#### SUBMITTAL

##### Standard

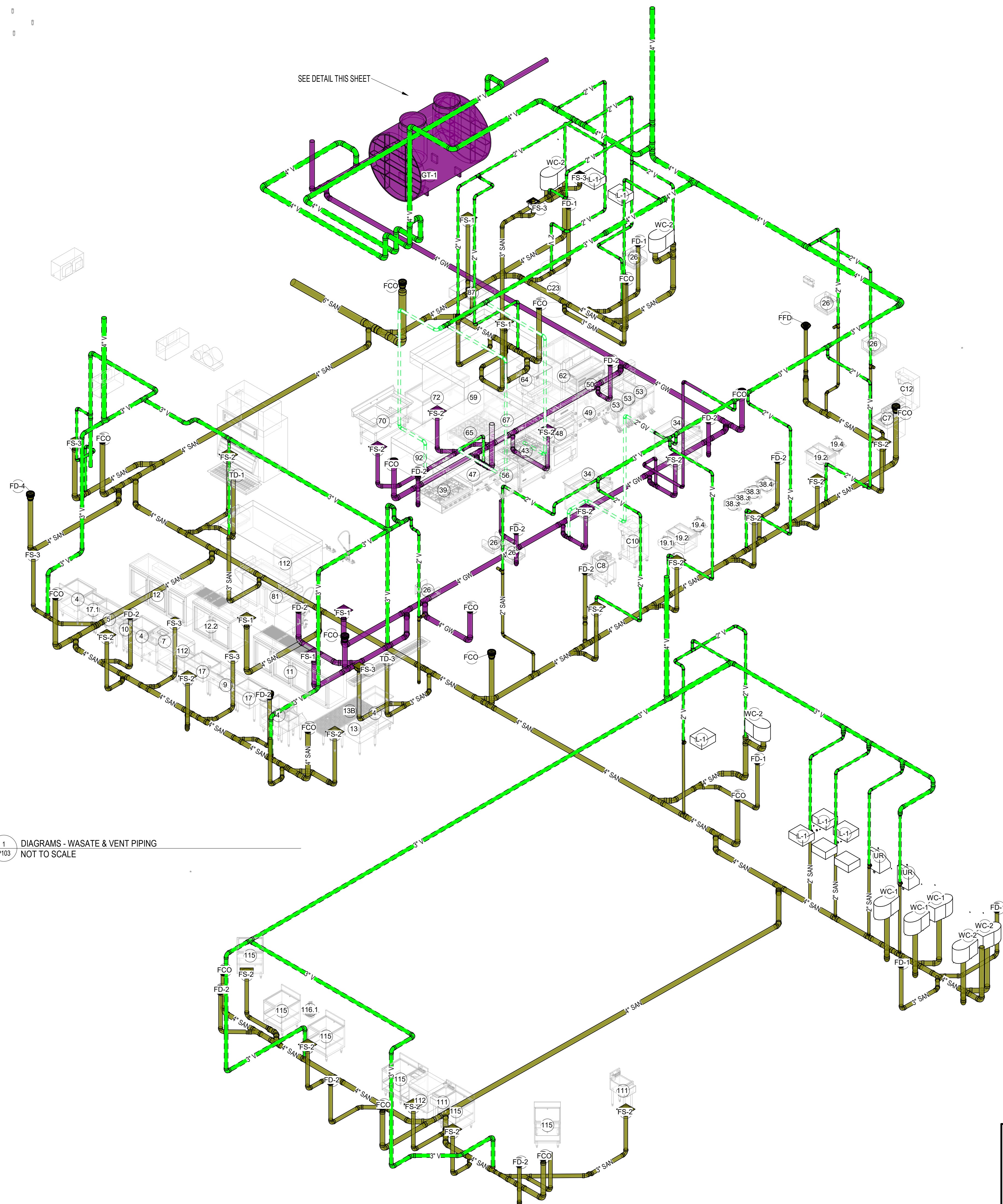
Location: Indoor/outdoor  
Installation: Below grade only  
**Flow Rates / Certified Grease Capacities:**  
100 GPM (6.3 L/s) / 6,547 lbs. (2,970 kg), 897 gal. (3,396 L)  
**Removal Efficiency at the Rated Capacity: 98.8%**  
99% Efficiency Rating: 6,237 lbs. (2,829 kg), 854 gal. (3,233 L)  
certified grease capacity @ 99.0% efficiency  
Solids Capacity: 103 gal. (389.3 L)  
Liquid Capacity: 1,010 gal. (3,823.3 L)  
Weight: 1,516 lbs. (687.5 kg)  
Connectors: 0" plan end inlet/outlet  
Covers: Cast iron covers, pickable 24" gas/water tight, 1/20" rated, proof-load tested to 40,000 lbs.  
Access Restrictor: Safety Star® (450 lb. rating) built into each cover adapter

##### Options

- ☐ 6" MPT inlet/outlet (stainless steel)
- ☐ 4" FPT inlet/outlet with 4" plain end adapters
- ☐ C24H2 Composite covers, bolted 24" gas/water tight, traffic load rated for 18,000 lbs.
- ☐ AAG High Water Anchor Kit
- ☐ CC2 Integral membrane clamping collar kit

##### Accessories

- ☒ FCR2 (x2) >4" - 34" field cut risers
- ☒ FCR2 (x4) >34" - 64" field cut risers
- ☒ FCR2 (x6) >64" - 96" field cut risers
- ☐ CA2 Adapter for 24" corrugated pipe riser
- ☐ AAG High Water Anchor Kit
- ☐ CC2 Integral membrane clamping collar kit





**COPYRIGHT**  
Aria Group Architects, Inc. shall retain all common law, statutory and other reserved rights. These drawings and related documents shall not be duplicated, disclosed or otherwise used without written consent of Aria Group Architects, Inc.

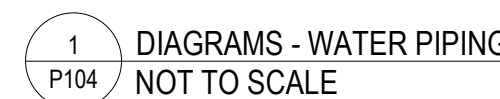
Sheet No.

P104

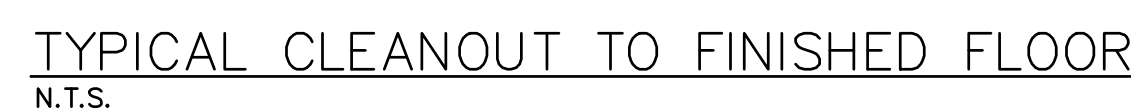


- (K1) BALL VALVE, TYPICAL AT BRANCH SUPPLY
- (K2) BALANCING VALVE, TYPICAL AT RETURN BRANCH
- (K3) STAINLESS INLINE DUAL CHECK VALVE, REFER TO SCHEDULE
- (K4) HAMMER ARRESTOR, REFER TO SCHEDULE
- (K5) COLD AND HOT RPZ FOR CHEMICAL DISPENSER
- (K6) PIPE C/WIHW TO TMV AT LAV & HAND-SINK, TYP. ALL, REFER TO SCHEDULE
- (K7) PROVIDE VALVED 3/4" CW STUB WITH DOUBLE CHECK VALVE W/ DRAIN TEMPERING VALVE

COORDINATED SHOP DRAWINGS SHALL BE PROVIDED BY EACH SUBCONTRACTOR AND SHALL CONTAIN A LAYOUT OF ALL DUCTWORK, CONDUIT, PIPING, EQUIPMENT, STRUCTURE, WALLS, CEILING, ETC. AS REQUIRED TO REFLECT THE OCCUPATION ACROSS ALL TRADES AND SHALL BE SUBMITTED FOR REVIEW. COORDINATED DRAWING SHALL BE SIGNED OFF BY ALL OTHER TRADES PRIOR TO BEING SUBMITTED FOR REVIEW. PLANS SHALL BE PREPARED AT A MINIMUM OF 1/8" SCALE OR THE SCALE OF THE DESIGN DRAWINGS, WHICHEVER IS LARGER. NO EQUIPMENT SHALL BE INSTALLED WITHOUT APPROVED SHOP DRAWINGS.







INSTALLATION PROCEDURE:  
CONDUIT TO BE CAPPED AND SEALED AT BOTH  
ENDS DURING FURTHER CONSTRUCTION. SODA  
LINE INSTALLERS TO TRIM EXPOSED ENDS TO  
1/2" AFT DURING PRODUCT LINE INSTALLATION.  
AFTER PRODUCT LINE IS INSTALLED, THE  
CONDUIT ENDS ARE TO BE FILLED & SEALED  
(WATERIGHT) APPROXIMATELY 2" TO 4" AT  
EACH END, ACCORDING TO NSF SPECIFICATIONS.



- NOTES:
1. FOR INSTALLATION DETAILS, REVIEW INSTRUCTION MANUAL PROVIDED BY WASTE OIL TANK SUPPLIER
  2. PROVIDE BACK TO BACK 45° ELBOW FOR ANY CHANGE IN DIRECTION.
  3. ALL PIPING & TANK TO BE LABELED.

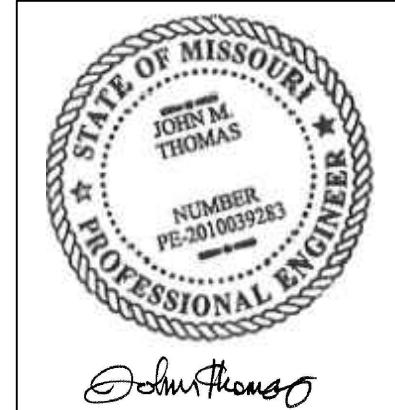
COORDINATED SHOP DRAWINGS SHALL BE PROVIDED BY EACH SUBCONTRACTOR AND SHALL CONTAIN A LAYOUT OF ALL DUCTWORK, CONDUIT, PIPING, EQUIPMENT, STRUCTURE, WALLS, CEILING, ETC. AS REQUIRED TO REFLECT FULL COORDINATION AMONG ALL TRADES AND SHALL BE SUBMITTED FOR REVIEW. COORDINATED DRAWINGS SHALL BE SIGNED OFF BY ALL OTHER TRADES PRIOR TO BEING SUBMITTED FOR REVIEW. PLANS SHALL BE PREPARED AT A MINIMUM OF 1/8" SCALE OR THE SCALE OF THE DESIGN DRAWINGS, WHICHEVER IS LARGER.

NO EQUIPMENT SHALL BE INSTALLED WITHOUT APPROVED SHOP DRAWINGS.

**FIELD VERIFICATION**  
Contractor shall verify all figured dimensions and conditions at the job site and notify Aria Group Architects, Inc. of any dimensional errors, omissions or discrepancies before beginning or fabricating any work. Do not scale these drawings.

**COPYRIGHT**  
Aria Group Architects, Inc. shall retain all common law, statutory and other reserved rights. These drawings and related documents shall not be duplicated, disclosed or otherwise without written consent of Aria Group Architects, Inc.

	2021/08/19	ISSUED FOR PERMIT
NO.	DATE	REMARKS
REVISIONS		



Drawing Title

## PLUMBING DETAILS

Job No.

☐ Drawn

Scale

Date

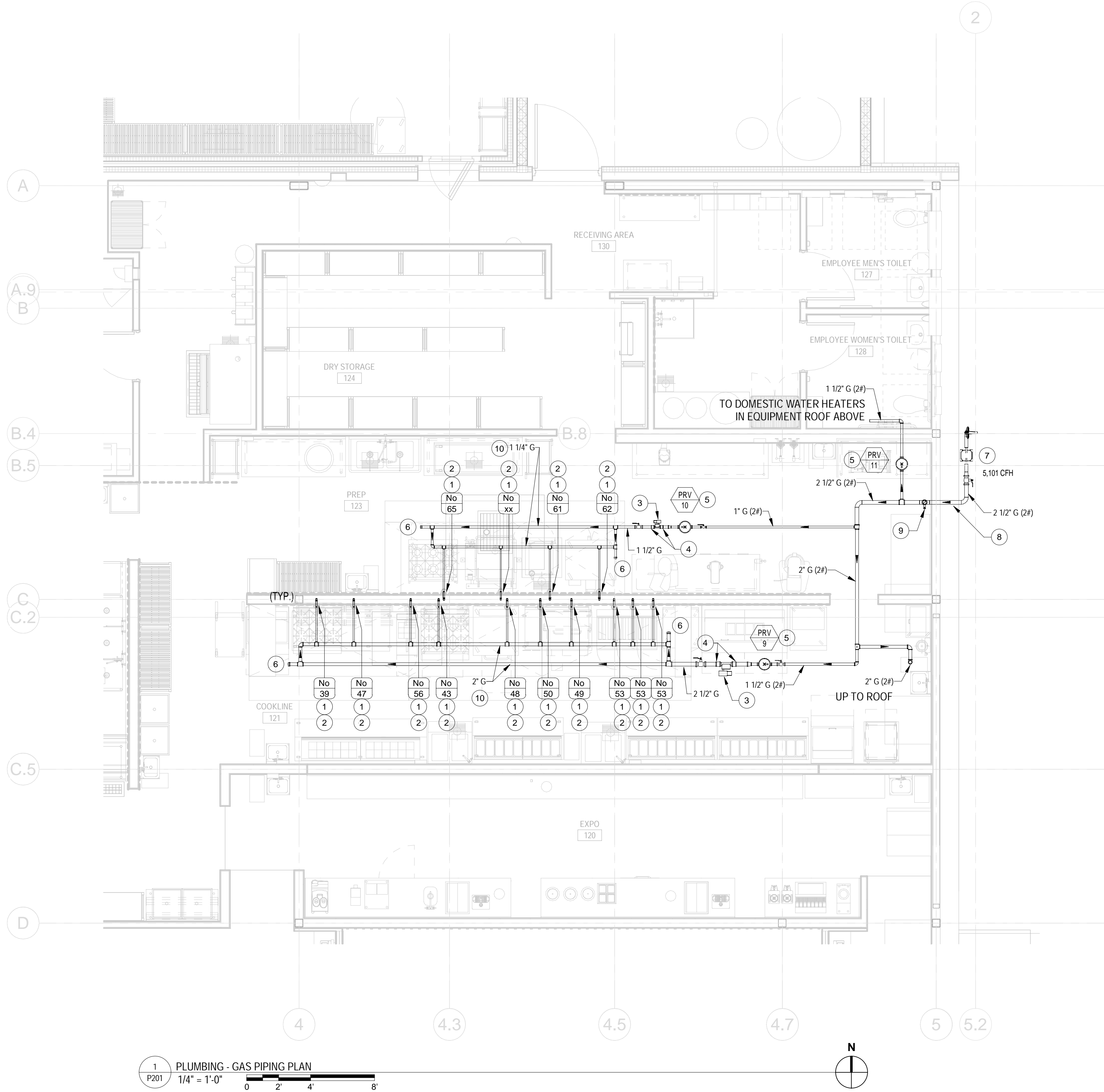
Sheet No.

P105



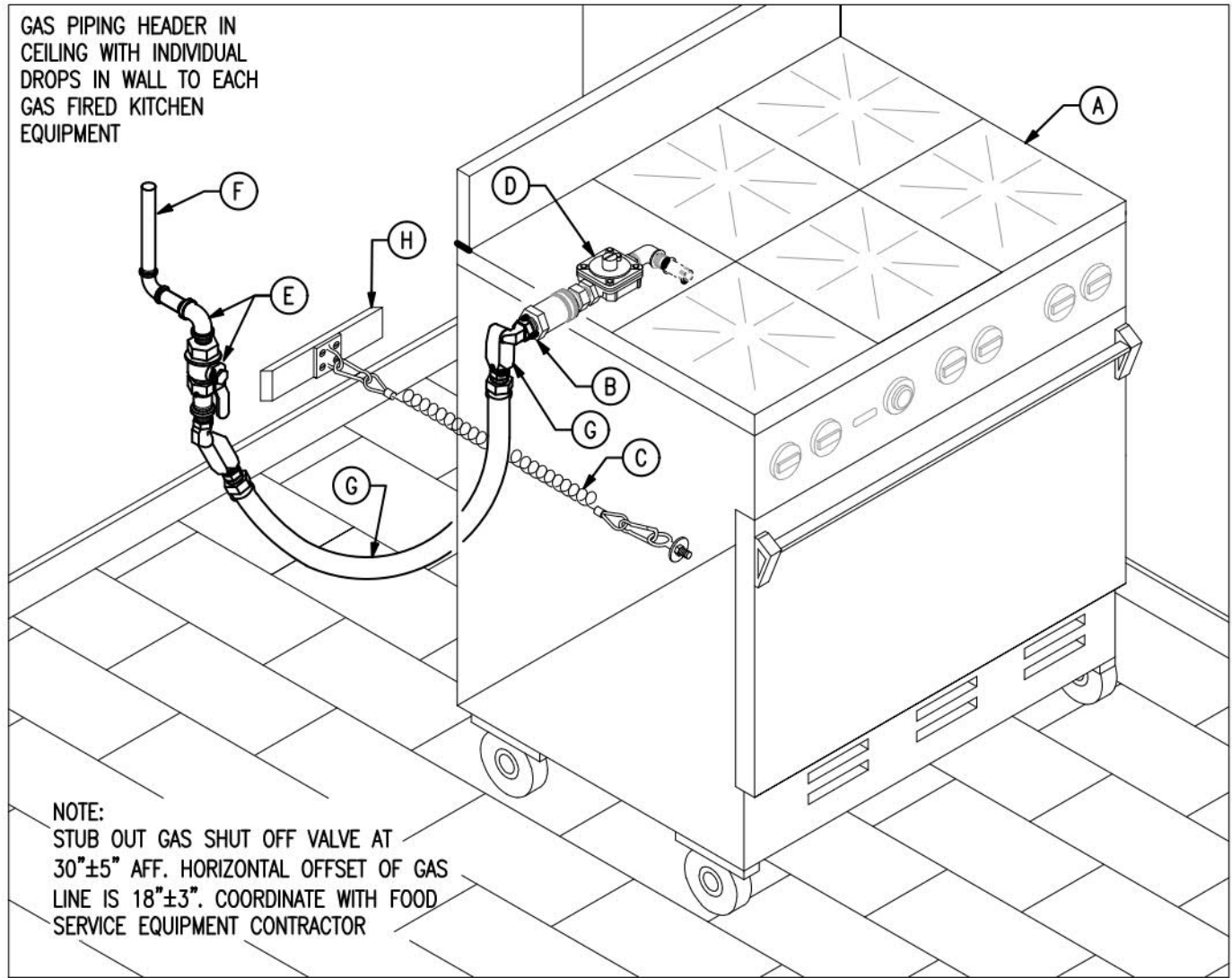






DRAWING NOTES: (THIS SHEET ONLY)

- EVERY GAS OUTLET SHALL HAVE AN INDIVIDUAL SHUTOFF VALVE. THE VALVE SHALL BE ADJACENT TO THE APPLIANCE AND BE TOTALLY ACCESSIBLE.
- QUICK CONNECTION AND FLEXIBLE HOSE TO APPLIANCE FURNISHED AND INSTALLED BY THIS CONTRACTOR.
- EMERGENCY SHUTOFF GAS SOLENOID VALVE (MECHANICAL TYPE), FURNISHED WITH KITCHEN EXHAUST HOOD TO BE INTERLOCKED WITH HOOD ANSUL SYSTEM. INSTALL DOWNSTREAM OF GAS PRESSURE REGULATOR.
- GAS PRESSURE TEST PLUG TO BE LOCATED IN ACCESSIBLE LOCATION IN KITCHEN AREA.
- ROUTE GAS VENT FULL SIZE TO OUTDOORS. MAINTAIN MINIMUM 10'-0" AWAY FROM ANY BUILDING INTAKE/DISCHARGE OPENING.
- MINIMUM 6" LONG DIRT LEG.
- INCOMING GAS SERVICE, PRESSURE REGULATOR, AND METER BY GAS UTILITY COMPANY TO DELIVER INDICATED GAS FLOW RATE @ 2.0 LBS DOWNSTREAM OF PRESSURE REGULATOR AND METER.
- ENTER BUILDING APPROXIMATELY 3'-0" ABOVE FINISHED FLOOR (V.I.F.) WITH PIPE SLEEVE THROUGH EXTERIOR WALL.
- SHUT-OFF VALVE IN RISER AT 5'-0" ABOVE FINISHED FLOOR WITH VALVE TAG 'BUILDING NATURAL GAS MAIN SHUT-OFF VALVE'.
- LOOPED GAS HEADER OF SIZE INDICATED ABOVE CEILING.



DETAIL NOTES: (THIS DETAIL ONLY)

- (A) FOOD SERVICE EQUIPMENT. (F) INDIVIDUAL GAS PIPING DROP INSIDE WALL TO MAIN GAS MANIFOLD INSTALLED ABOVE CEILING (BY PLUMBING CONTRACTOR).
- (B) UTILITY INLET. (G) QUICK DISCONNECT HOSE AND FITTINGS (BY FSE CONTRACTOR).
- (C) RESTRAINING CABLE (BY FSE CONTRACTOR). (H) COORDINATE WALL REINFORCING WITH GENERAL CONTRACTOR.
- (D) APPLIANCE GAS REGULATOR VALVE SHALL MEET GAS UTILITY COMPANY MINIMUM EMERGENCY EXPOSURE LIMIT. PROVIDE OVER-PRESSURE PROTECTION DEVICE, OTHERWISE.
- (E) ELBOW AND SHUT-OFF VALVE (BY PLUMBING CONTRACTOR).

FOOD SERVICE EQUIPMENT GAS CONNECTION DETAIL

GAS PRESSURE REGULATOR SCHEDULE ( PRV )

TAG	SERVING	LOCATION	CAPACITY (CFH)	MIN. CAPACITY (CFH)	INLET PRESSURE	OUTLET PRESSURE	RATED PRESSURE	MANUFACTURER MAXITROL MODEL NO.	NOTES
PRV-1	RTU-1	ROOF	250	250	2 PSI	7" W.C.	2 PSI	325-5L	1,2,3
PRV-2	RTU-2	ROOF	250	250	2 PSI	7" W.C.	2 PSI	325-5L	1,2,3
PRV-3	RTU-3	ROOF	250	250	2 PSI	7" W.C.	2 PSI	325-5L	1,2,3
PRV-4	RTU-4	ROOF	60	60	2 PSI	7" W.C.	2 PSI	325-3L	1,2,3
PRV-5	RTU-5	ROOF	400	400	2 PSI	7" W.C.	2 PSI	325-5L	1,2,3
PRV-6	RTU-6	ROOF	60	60	2 PSI	7" W.C.	2 PSI	325-3L	1,2,3
PRV-7	MAU-1	ROOF	362	362	2 PSI	7" W.C.	2 PSI	325-5L	1,2,3
PRV-8	MAU-2	ROOF	191	191	2 PSI	7" W.C.	2 PSI	325-5L	1,2,3
PRV-9	KITCHEN EQUIPMENT	COOKLINE 124	1,377	1,377	2 PSI	7" W.C.	2 PSI	325-9L	1,2,3,4
PRV-10	KITCHEN EQUIPMENT	PREP 125	508	508	2 PSI	7" W.C.	2 PSI	325-5L	1,2,3,4
PRV-11	DOMESTIC WATER HEATERS	EQUIPMENT PLATFORM 200	1,393	1,393	2 PSI	7" W.C.	2 PSI	325-9L	1,2,3,4

NOTES:

- REGULATORS SHALL BE FULL CAPACITY INTERNAL RELIEF TYPE.
- REGULATORS TO BE INSTALLED WITH RELIEF VENT IN POSITION TO PREVENT WATER FROM ENTERING. VENT TO BE A MINIMUM OF 12 INCHES ABOVE ROOF OR GRADE.
- TAG REGULATORS WITH INLET AND OUTLET SETTING. AFFIX PERMANENT 'DO NOT REMOVE' ON SETTING TAG.
- REGULATORS INSTALLED INDOORS SHALL HAVE FULL SIZED VENT PIPED TO OUTDOORS. TERMINATE WITH SCREENED ELBOW TURNED DOWN A MINIMUM OF 12" ABOVE ROOF OR GRADE.

GAS SERVICE REQUIREMENTS \*

ITEM NO.	QUANTITY	DESCRIPTION	MIN/MAX NAT. GAS INLET PRESSURE	GAS BTUH EACH	GAS CFH TOTAL
DOMESTIC WATER HEATERS					
DWH-1	7	DOMESTIC WATER HEATER	4" - 10.5" WC	199,000	1,393
CONNECTED LOAD =					1,393
ROOF					
RTU-1	1	ROOFTOP UNIT	2.5" - 14" WC	250,000	250
RTU-2	1	ROOFTOP UNIT	2.5" - 14" WC	250,000	250
RTU-3	1	ROOFTOP UNIT	2.5" - 14" WC	250,000	250
RTU-4	1	ROOFTOP UNIT	4.5" - 14" WC	60,000	60
RTU-5	1	ROOFTOP UNIT	2.5" - 14" WC	400,000	400
RTU-6	1	ROOFTOP UNIT	4.5" - 14" WC	60,000	60
MAU-1	1	MAKEUP AIR UNIT	7" - 14" WC	362,000	362
MAU-2	1	MAKEUP AIR UNIT	7" - 14" WC	191,000	191
CONNECTED LOAD =					1,823
KITCHEN					
39	1	SIX BURNER MODULAR RANGE	5" - 10" WC	210,000	210
43	1	36" RANGE / CONV. OVEN	5" - 10" WC	240,000	240
47	1	36" COUNTERTOP GRIDDLE	4" - 10" WC	82,000	82
48	1	DECK BROILER	7" - 10" WC	208,000	208
49	1	48" COUNTERTOP GRIDDLE	7" - 10" WC	120,000	120
50	1	SALAMANDER	4" - 10" WC	40,000	40
53	3	FRYER	7" - 10" WC	122,000	366
56	1	PASTA COOKER	3.5" - 10" WC	111,000	111
62	1	DOUBLE CONVECTION OVEN	7" - 10" WC	144,000	144
64	1	BOILERLESS STEAMER	4.25" - 10" WC	62,000	62
65	1	36" SIX BURNER RANGE / CONV. OVEN	5" - 10" WC	198,000	198
67	1	30 GAL TILTING SKILLET	4.5" - 10" WC	104,000	104
CONNECTED LOAD =					1,885
TOTAL CONNECTED LOAD =					5,101

\* = 2.0 PSIG DOWNSTREAM OF GAS METER REQUESTED

FOOD SERVICE EQUIPMENT MECHANICAL SCHEDULE

No.	DESCRIPTION	GAS LINE SIZE (IN.)	GAS LOAD (BTU/HR)
39	36" SIX BURNER MODULAR RANGE	3/4"	210,000
43	36" RANGE / CONV. OVEN	3/4"	240,000
47	36" COUNTERTOP GRIDDLE	3/4"	82,000
48	DECK BROILER	3/4"	208,000
49	48" COUNTERTOP GRIDDLE	3/4"	120,000
50	SALAMANDER	3/4"	40,000
53	FRYER ( 45 LB )	3/4"	122,000
56	PASTA COOKER	3/4"	111,000
62	DOUBLE CONVECTION OVEN	3/4"	144,000
64	BOILERLESS STEAMER	1/2"	62,000
65	COUNTERTOP SIX BURNER RANGE	3/4"	198,000
67	30 GAL TILTING SKILLET	1/2"	104,000

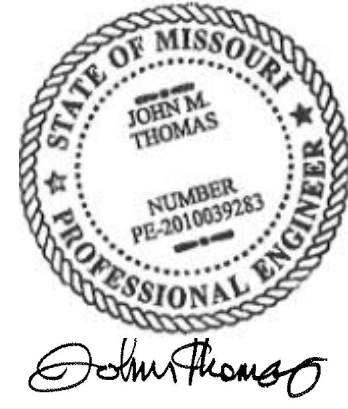
COORDINATED SHOP DRAWINGS SHALL BE PROVIDED BY EACH SUBCONTRACTOR AND SHALL CONTAIN A LAYOUT OF ALL DUCTWORK, CONDUIT, PIPING, EQUIPMENT, STRUCTURE, WALLS, CEILING, ETC. AS REQUIRED TO REFLECT FULL COORDINATION ACROSS ALL TRADES AND SHALL BE SUBMITTED FOR REVIEW. COORDINATED DRAWINGS SHALL BE SIGNED OFF BY ALL OTHER TRADES PRIOR TO BEING SUBMITTED FOR REVIEW. PLANS SHALL BE PREPARED AT A MINIMUM OF 1/8" SCALE OR THE SCALE OF THE DESIGN DRAWINGS, WHICHEVER IS LARGER. NO EQUIPMENT SHALL BE INSTALLED WITHOUT APPROVED SHOP DRAWINGS.

FIELD VERIFICATION  
Contractor shall verify all figured dimensions and conditions at the job site and notify Avisa Group Architects, Inc. of any dimensional errors, omissions or discrepancies before beginning or fabricating any work. Do not scale these drawings.

COPYRIGHT  
Avisa Group Architects, Inc. shall retain all common law, statutory and other reserved rights. These drawings and related documents shall not be duplicated, disclosed or otherwise used without written consent of Avisa Group Architects, Inc.

NO.	DATE	REMARKS
1	2021/08/19	ISSUED FOR PERMIT

REVISIONS



Drawing Title

PLUMBING - GAS  
PIPING PLAN

Job No. 21-0064 Drawn Author

Scale AS NOTED Date 08/19/2021

Sheet No.  
**P201**



**COPYRIGHT**  
Aria Group Architects, Inc. shall  
all common law, statutory and  
reserved rights. These drawings  
related documents shall not be  
duplicated, disclosed or otherw  
without written consent of Aria  
Architects, Inc.

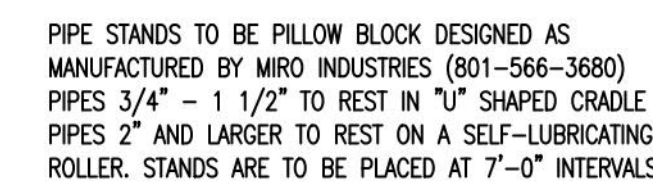
## REVISIONS



Scale	Date
3/16" = 1'-0"	08/19/

Sheet No.  
**P202**

THE TEST PRESSURE TO BE USED SHALL BE NOT LESS THAN ONE AND ONE-HALF TIMES THE PROPOSED MAXIMUM WORKING PRESSURE, BUT NOT LESS THAN TEN (10) PSIG INCLUSIVE OF DESIGN PRESSURE. FOR WELDED JOINT, AND FOR PIPING CARRYING GAS AT PRESSURES IN EXCESS OF FOURTEEN (14) INCHES WATER COLUMN PRESSURE, THE TEST PRESSURE SHALL NOT BE LESS THAN SIXTY (60) PSIG. WHERE THE TEST PRESSURE EXCEEDS ONE HUNDRED TWENTY-FIVE (125) PSIG, THE TEST PRESSURE SHALL NOT EXCEED A VALUE THAT PRODUCES A HOOP STRESS IN THE PIPING GREATER THAN FIFTY (50) PERCENT OF THE SPECIFIED MINIMUM YIELD STRENGTH OF THE PPE.

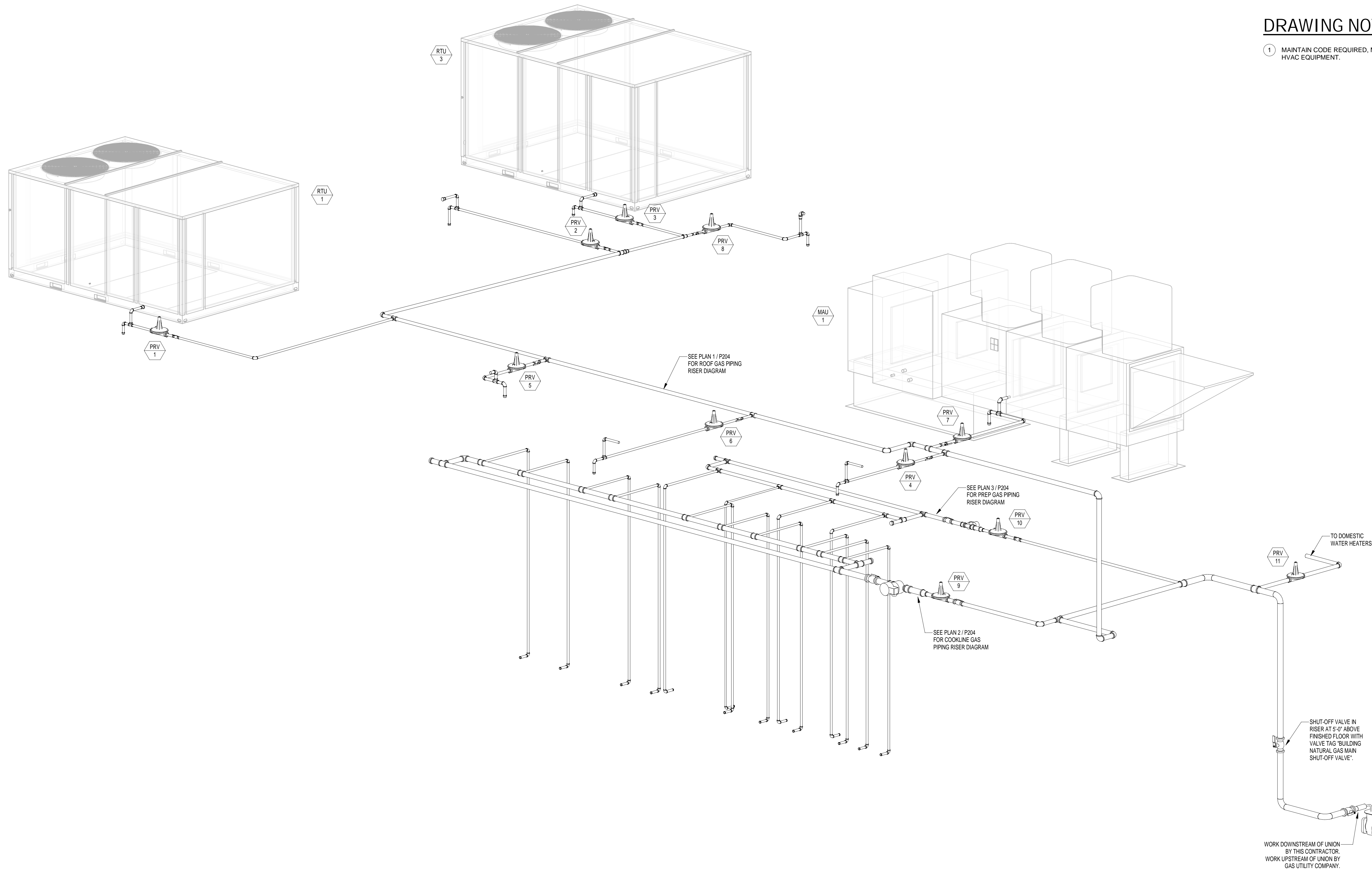


COORDINATED SHOP DRAWINGS SHALL BE PROVIDED BY EACH SUBCONTRACTOR AND SHALL CONTAIN A LAYOUT OF ALL DUCTWORK, CONDUIT, PIPING, EQUIPMENT, STRUCTURE, WALLS, CEILING, ETC. AS REQUIRED TO REFLECT FIELD COORDINATION ACROSS ALL TRADES AND SHALL BE SUBMITTED FOR REVIEW. COORDINATED DRAWINGS SHALL BE SIGNED OFF BY ALL OTHER TRADES PRIOR TO BEING SUBMITTED FOR REVIEW. PLANS SHALL BE PREPARED AT A MINIMUM OF 1/8" SCALE OR THE SCALE OF THE DESIGN DRAWINGS, WHICHEVER IS LARGER. NO EQUIPMENT SHALL BE INSTALLED WITHOUT APPROVED SHOP DRAWINGS.



8/17/2021 1:12:10 PM C:\Reel\Locals\BTR021-0064.CH\_Mech\_Central\_v21\_Dwg-S749L.rvt

1 PLUMBING - BUILDING GAS PIPING RISER DIAGRAM  
P203 NOT TO SCALE



## GAS PRESSURE REGULATOR VENT NOTE:

PIPE GAS PRESSURE REGULATOR VENT ABOVE THE TOP OF THE ASSOCIATED ROOFTOP UNIT/ MAKEUP AIR UNIT TO PREVENT ICE FROM UNIT FLUE AND SNOW BLOCKING GAS PRESSURE REGULATOR VENT.

## GAS PRESSURE EMERGENCY EXPOSURE LIMIT NOTE:

EACH GAS FIRED HVAC EQUIPMENT/KITCHEN APPLIANCE/DOMESTIC WATER HEATER INTERNAL GAS REGULATOR VALVE SHALL MEET GAS UTILITY COMPANY MINIMUM EMERGENCY EXPOSURE LIMIT. PROVIDE SUITABLE OVER-PRESSURE PROTECTION DEVICE FOR ANY EQUIPMENT NOT MEETING ABOVE REQUIREMENT.

## DRAWING NOTES: (THIS SHEET ONLY)

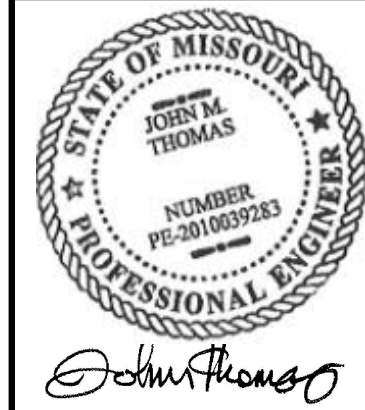
- 1 MAINTAIN CODE REQUIRED, MANUFACTURER RECOMMENDED CLEARANCE AT HVAC EQUIPMENT.

COORDINATED SHOP DRAWINGS SHALL BE PROVIDED BY EACH SUBCONTRACTOR AND SHALL CONTAIN A LAYOUT OF ALL DUCTWORK, CONDUIT, PIPING, EQUIPMENT, STRUCTURE, WALLS, CEILING, ETC. AS REQUIRED TO REFLECT FULL COORDINATION ACROSS ALL TRADES AND SHALL BE SUBMITTED FOR REVIEW. COORDINATED DRAWINGS SHALL BE SIGNED OFF BY ALL OTHER TRADES PRIOR TO BEING SUBMITTED FOR REVIEW. PLANS SHALL BE PREPARED AT A MINIMUM OF 1/8" SCALE OR THE SCALE OF THE DESIGN DRAWINGS, WHICHEVER IS LARGER. NO EQUIPMENT SHALL BE INSTALLED WITHOUT APPROVED SHOP DRAWINGS.

**FIELD VERIFICATION**  
Contractor shall verify all figured dimensions and conditions at the job site and notify Avisa Group Architects, Inc. of any dimensional errors, omissions or discrepancies before beginning or fabricating any work. Do not scale these drawings.

**COPYRIGHT**  
Avisa Group Architects, Inc. shall retain all common law, statutory and other reserved rights. These drawings and related documents shall not be duplicated, disclosed or otherwise used without written consent of Avisa Group Architects, Inc.

NO.	DATE	ISSUED FOR PERMIT	REMARKS
1	2021/08/19	ISSUED FOR PERMIT	
REVISIONS			



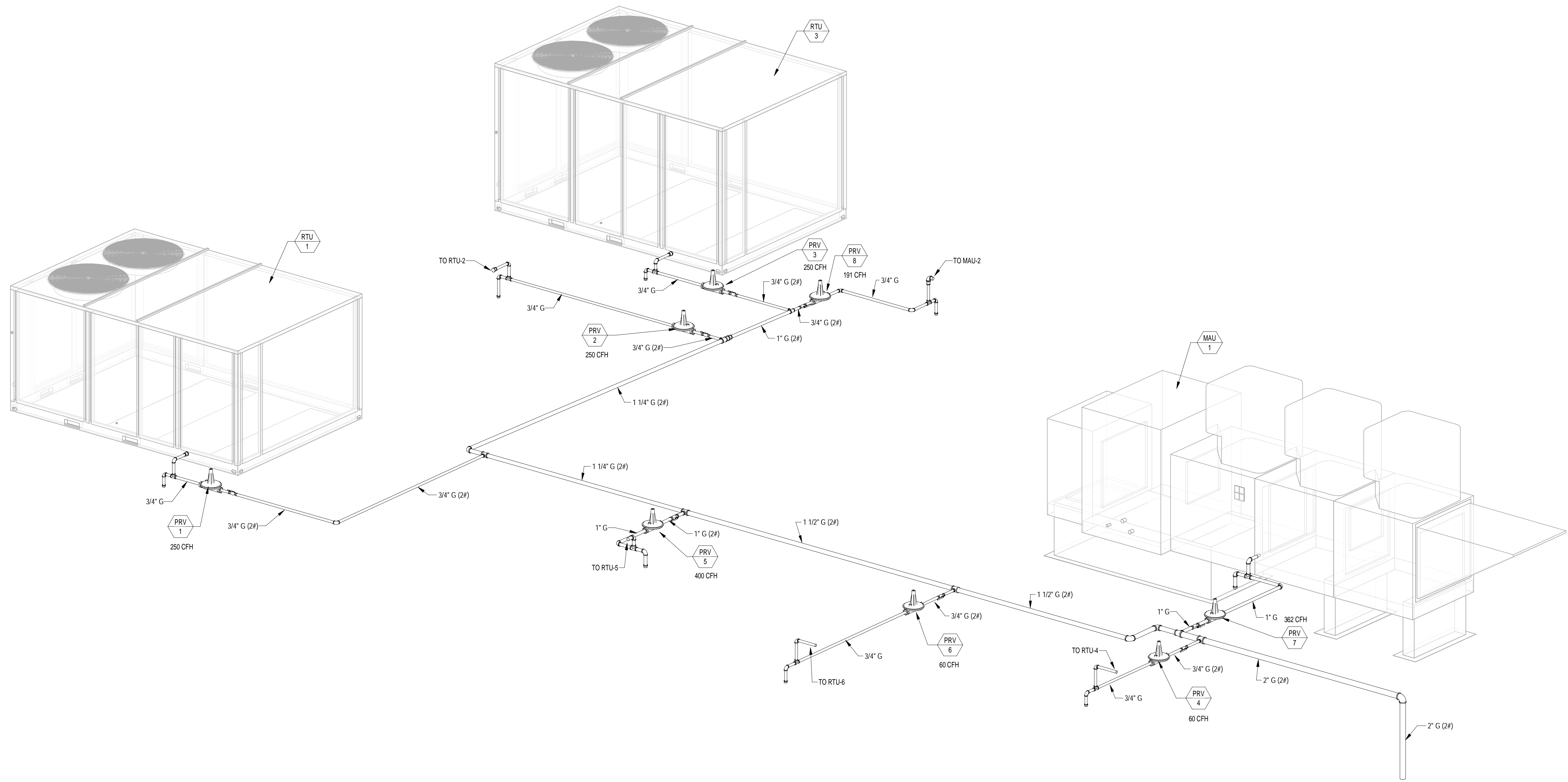
Drawing Title  
PLUMBING - BUILDING GAS PIPING RISER DIAGRAM

Job No. 21-0064 Drawn DNK

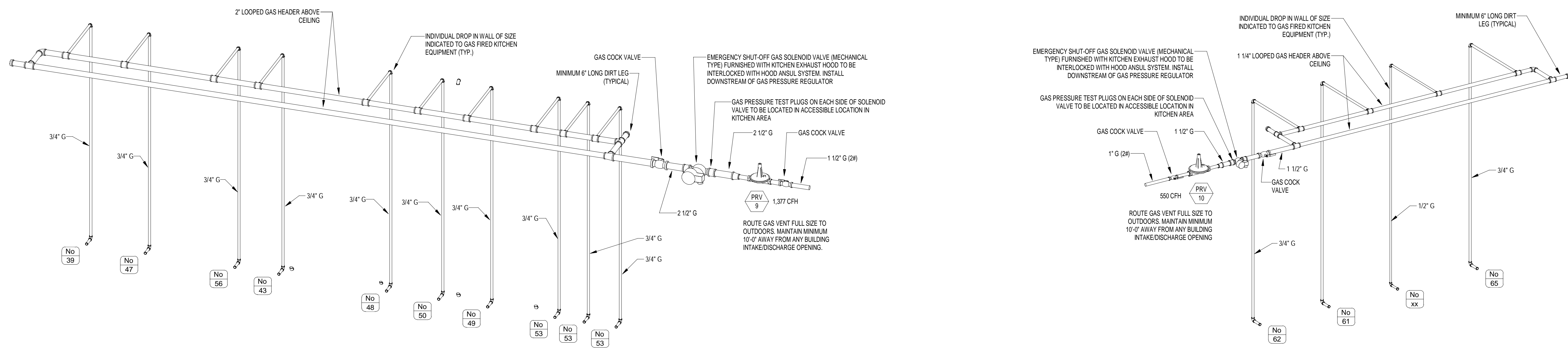
Scale N.T.S. Date 08/19/2021

Sheet No.  
P203

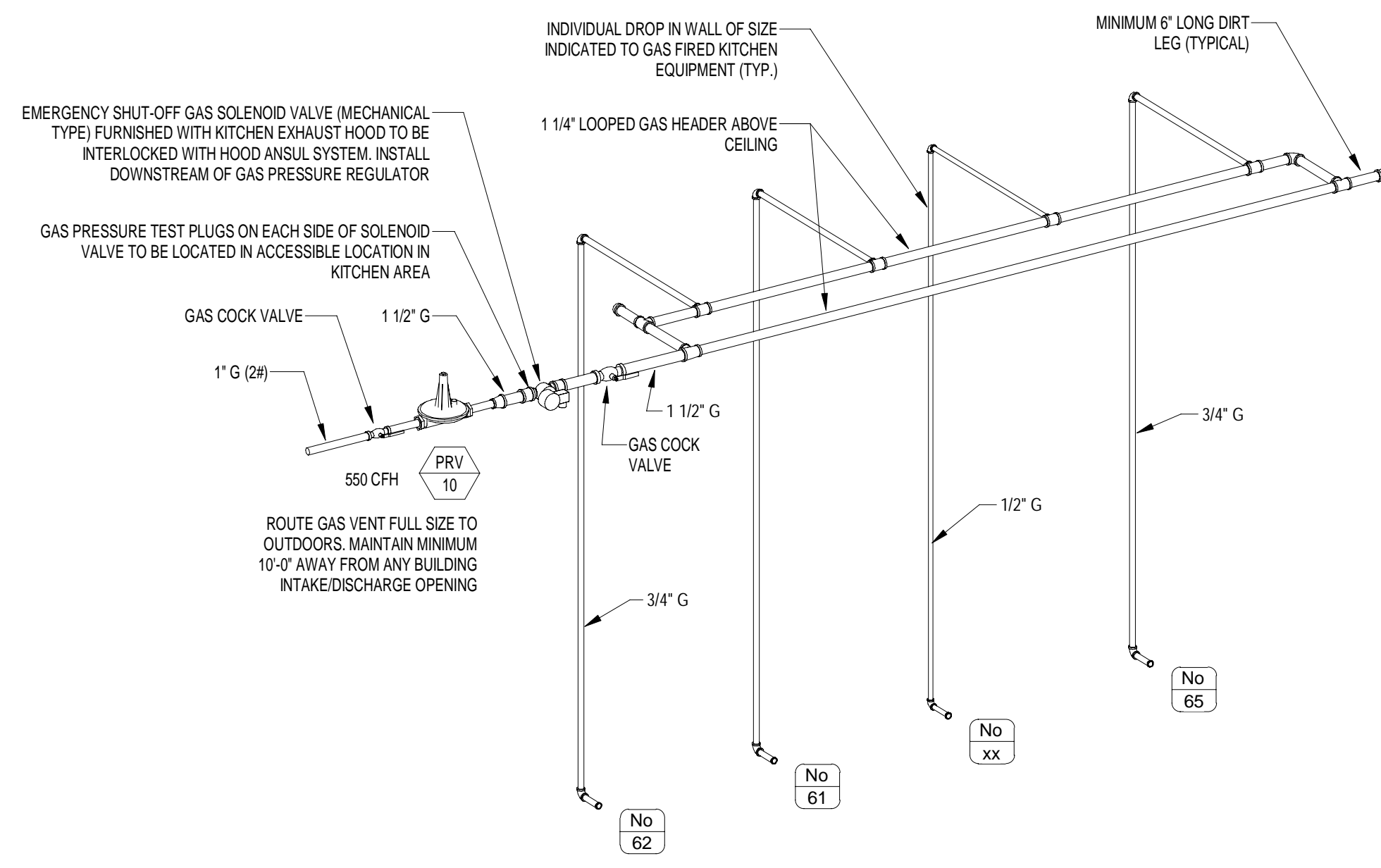




1  
P204  
PLUMBING - ROOF GAS PIPING RISER DIAGRAM  
NOT TO SCALE



2  
P204  
PLUMBING - COOKLINE GAS PIPING RISER DIAGRAM  
NOT TO SCALE



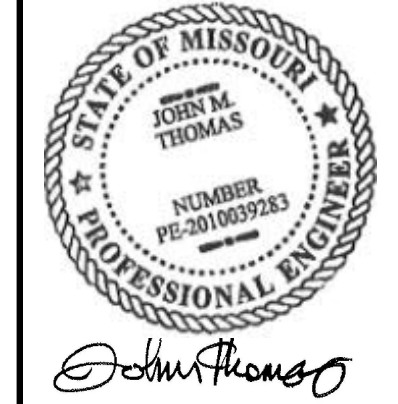
3  
P204  
PLUMBING - PREP GAS PIPING RISER DIAGRAM  
NOT TO SCALE

COORDINATED SHOP DRAWINGS SHALL BE PROVIDED BY EACH SUBCONTRACTOR AND SHALL CONTAIN A LAYOUT OF ALL DUCTWORK, CONDUIT, PIPING, EQUIPMENT, STRUCTURE, WALLS, CEILING, ETC. AS REQUIRED TO REFLECT FULL COORDINATION ACROSS ALL TRADES AND SHALL BE SUBMITTED FOR REVIEW. COORDINATED DRAWINGS SHALL BE SIGNED OFF BY ALL OTHER TRADES PRIOR TO BEING SUBMITTED FOR REVIEW. PLANS SHALL BE PREPARED AT A MINIMUM OF 1/8\"/>

**FIELD VERIFICATION**  
Contractor shall verify all figured dimensions and conditions at the job site and notify Avisa Group Architects, Inc. of any dimensional errors, omissions or discrepancies before beginning or fabricating any work. Do not scale these drawings.

**COPYRIGHT**  
Avisa Group Architects, Inc. shall retain all common law, statutory and other reserved rights. These drawings and related documents shall not be duplicated, disclosed or otherwise used without written consent of Avisa Group Architects, Inc.

NO.	DATE	REVISIONS
1	2021/08/19	ISSUED FOR PERMIT



Drawing Title  
PLUMBING - PARTIAL  
GAS PIPING RISER  
DIAGRAMS

Job No. 21-0064	Drawn DNK
Scale N.T.S.	Date 08/19/2021

Sheet No.  
**P204**

540 NW CHIPMAN ROAD  
LEES SUMMIT, MO 64086

**COOPER'S HAWK**  
WINERY & RESTAURANT



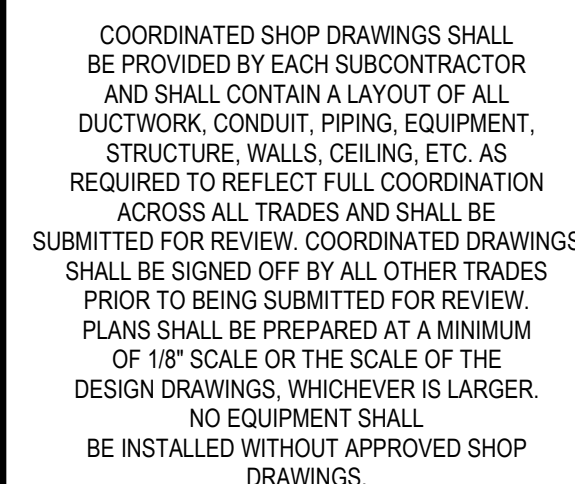
1014 N. CHIPMAN AVE., STE. 201  
LEES SUMMIT, MO 64086  
PH: 636.333.0331  
WWW.BTR-ENGINEERING.COM



**COPYRIGHT**  
Aria Group Architects, Inc. shall retain all common law, statutory and other reserved rights. These drawings and related documents shall not be duplicated, disclosed or otherwise without written consent of Aria Group Architects, Inc.

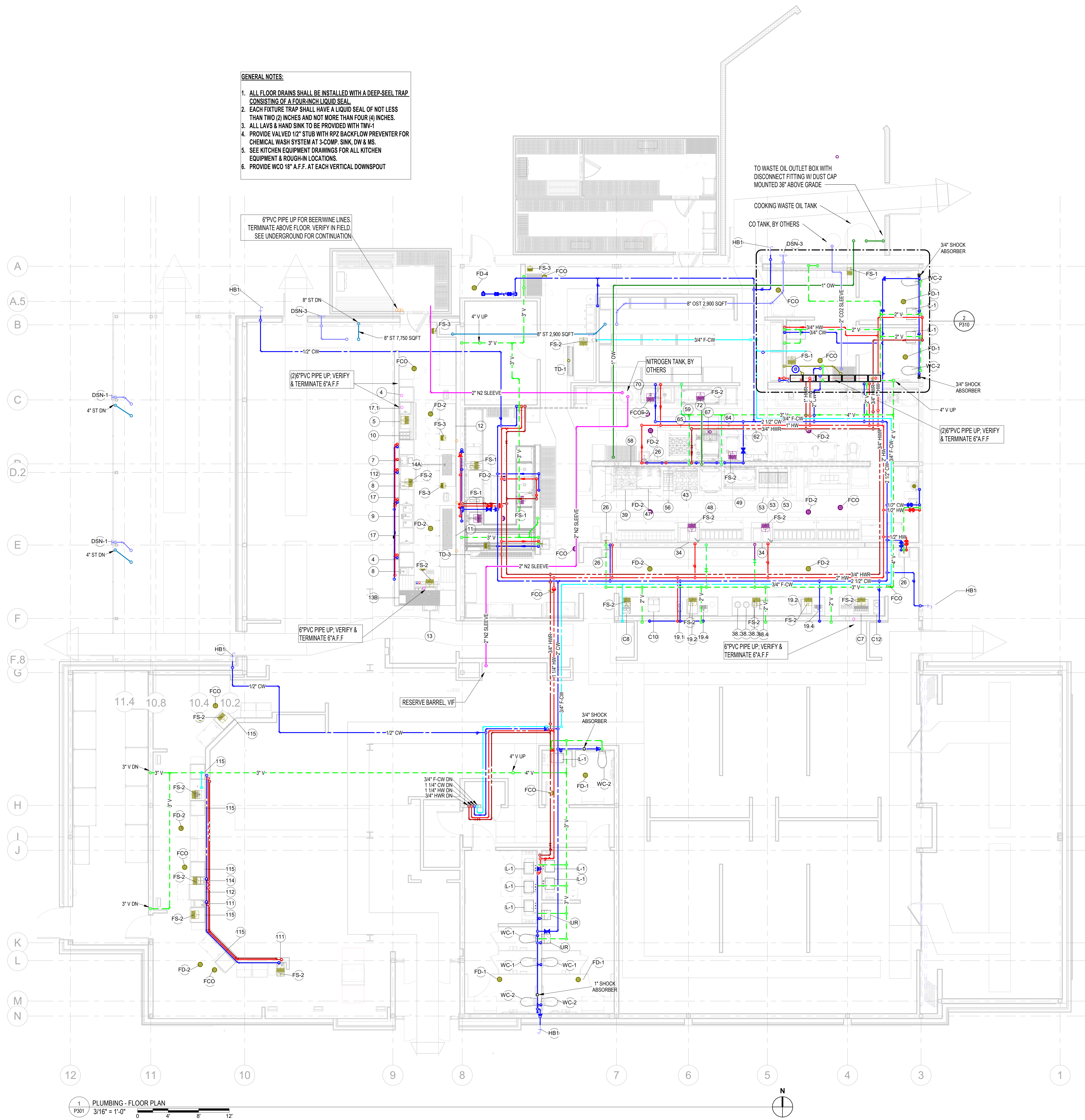
Sheet No.

P300





8/17/2021 14:06:22 BIM 360//021038 - Cooper's Hawk - Lees Summit 02-10064 CH PFP Central v21.rvt



- GENERAL NOTES:**
1. ALL FLOOR DRAINS SHALL BE INSTALLED WITH A DEEP-SEAL TRAP CONSISTING OF A FOUR-INCH LIQUID SEAL.
  2. EACH FIXTURE TRAP SHALL HAVE A LIQUID SEAL OF NOT LESS THAN TWO (2) INCHES AND NOT MORE THAN FOUR (4) INCHES.
  3. ALL LAVS & HAND SINK TO BE PROVIDED WITH TMV-1
  4. PROVIDE VALVED 1/2" STUB WITH RPZ BACKFLOW PREVENTER FOR CHEMICAL WASH SYSTEM AT 3-COMP. SINK, DW & MS.
  5. SEE KITCHEN EQUIPMENT DRAWINGS FOR ALL KITCHEN EQUIPMENT & ROUGH-IN LOCATIONS.
  6. PROVIDE WCO 16" A.F.F. AT EACH VERTICAL DOWNSPOUT

6" PVC PIPE UP FOR BEER/WINE LINES  
TERMINATE ABOVE FLOOR. VERIFY IN FIELD.  
SEE UNDERGROUND FOR CONTINUATION.

(2) 6" PVC PIPE UP. VERIFY  
& TERMINATE 6" A.F.F.

6" PVC PIPE UP. VERIFY &  
TERMINATE 6" A.F.F.

6" PVC PIPE UP. VERIFY &  
TERMINATE 6" A.F.F.

TO WASTE OIL OUTLET BOX WITH  
DISCONNECT FITTING W/ DUST CAP  
MOUNTED 36" ABOVE GRADE

COOKING WASTE OIL TANK

CO TANK, BY OTHERS

(2) 6" PVC PIPE UP. VERIFY  
& TERMINATE 6" A.F.F.

1 PLUMBING - FLOOR PLAN  
P301  
3/16" = 1'-0"

COORDINATED SHOP DRAWINGS SHALL  
BE PROVIDED BY EACH SUBCONTRACTOR  
AND SHALL CONTAIN A LAYOUT OF ALL  
DUCTWORK, CONDUIT, PIPING, EQUIPMENT,  
STRUCTURE, WALLS, CEILING, ETC. AS  
REQUIRED TO REFLECT FULL COORDINATION  
ACROSS ALL TRADES AND SHALL BE  
SUBMITTED FOR REVIEW. COORDINATED DRAWINGS  
SHALL BE SIGNED OFF BY ALL OTHER TRADES.  
PRIOR TO BEING SUBMITTED FOR REVIEW.  
PLANS SHALL BE PREPARED AT A MINIMUM  
OF 1/8" SCALE OR THE SCALE OF THE  
DESIGN DRAWINGS, WHICHEVER IS LARGER.  
NO EQUIPMENT SHALL  
BE INSTALLED WITHOUT APPROVED SHOP  
DRAWINGS.

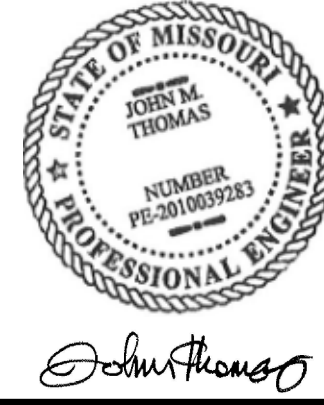


**COOPER'S HAWK**  
WINERY & RESTAURANT  
540 NW CHIPMAN ROAD  
LEES SUMMIT, MO 64086

**FIELD VERIFICATION**  
Contractor shall verify all figured  
dimensions and conditions at the job  
site and notify Axis Group Architects,  
Inc. of any dimensional errors,  
omissions or discrepancies before  
beginning or fabricating any work. Do  
not scale these drawings.

**COPYRIGHT**  
Axis Group Architects, Inc. shall retain  
all common law, statutory and other  
reserved rights. These drawings and  
related documents shall not be  
duplicated, disclosed or otherwise  
without written consent of Axis Group  
Architects, Inc.

NO.	DATE	ISSUED FOR PERMIT	REMARKS
REVISIONS			



Drawing Title  
**PLUMBING - FLOOR  
PLAN**

Job No.  
21-0064

Scale  
3/16" =  
1'-0"

Drawn  
DM

Date  
08/06/2021

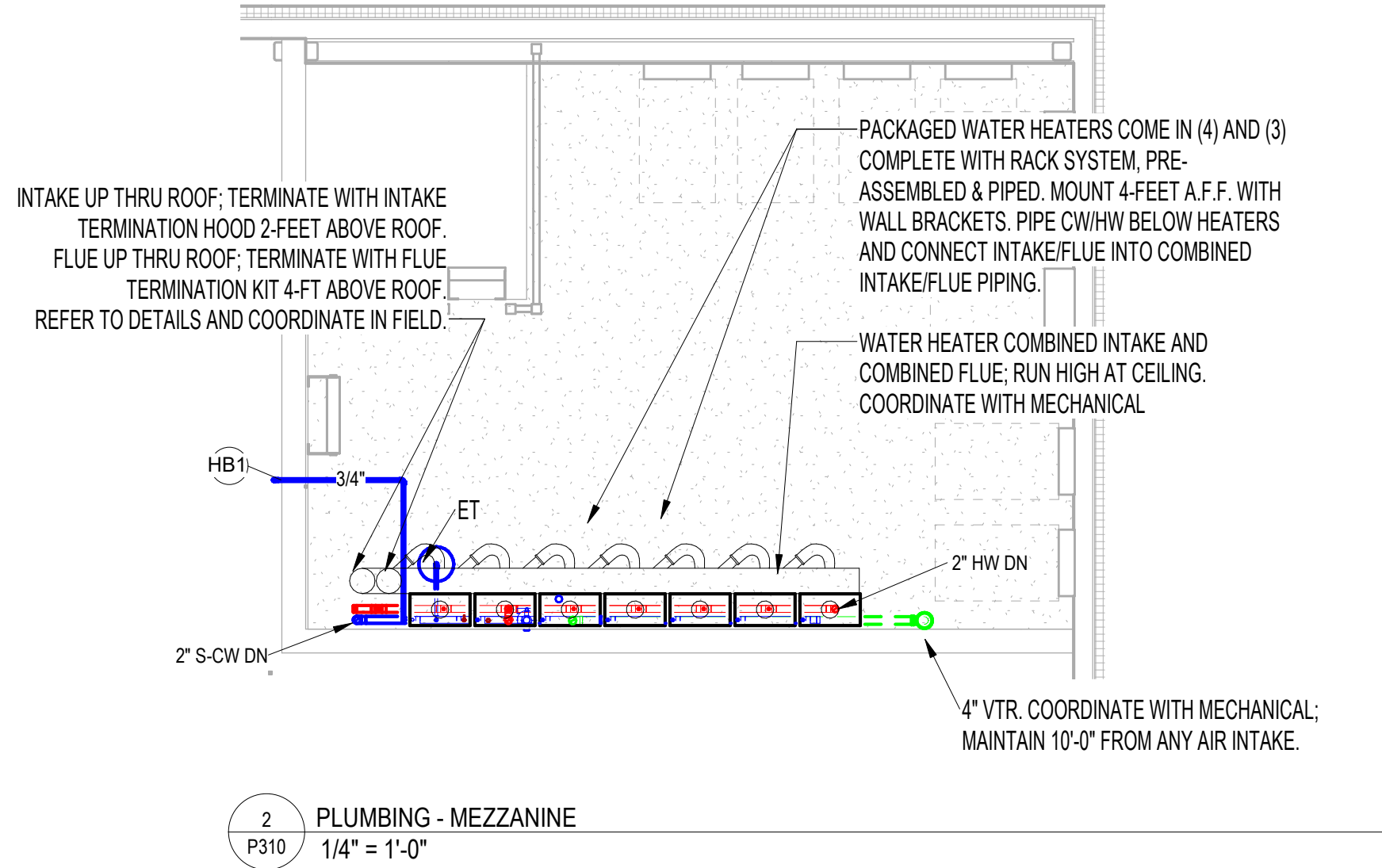
Sheet No.  
**P301**



8/17/2021 14:06:23 BIM 360//021038 - CoopersHawk - Lees Summit0210064.CH PFP\_Central\_v01.rvt



1 PLUMBING - ROOF PLAN  
P310 3/16" = 1'-0"



2 PLUMBING - MEZZANINE  
P310 1/4" = 1'-0"

COORDINATED SHOP DRAWINGS SHALL BE PROVIDED BY EACH SUBCONTRACTOR AND SHALL CONTAIN A LAYOUT OF ALL DUCTWORK, CONDUIT, PIPING, EQUIPMENT, STRUCTURE, WALLS, CEILING, ETC. AS REQUIRED TO REFLECT FULL COORDINATION ACROSS ALL TRADES AND SHALL BE SUBMITTED FOR REVIEW. COORDINATED DRAWINGS SHALL BE SIGNED OFF BY ALL OTHER TRADES PRIOR TO BEING SUBMITTED FOR REVIEW. PLANS SHALL BE PREPARED AT A MINIMUM OF 1/8" SCALE OR THE SCALE OF THE DESIGN DRAWINGS, WHICHEVER IS LARGER. NO EQUIPMENT SHALL BE INSTALLED WITHOUT APPROVED SHOP DRAWINGS.

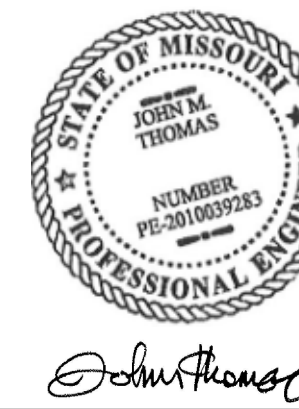


COOPER'S HAWK  
WINERY & RESTAURANT  
540 NW CHIPMAN ROAD  
LEES SUMMIT, MO 64086

FIELD VERIFICATION  
Contractor shall verify all figured dimensions and conditions at the job site and notify Axis Group Architects, Inc. of any dimensional errors, omissions or discrepancies before beginning or fabricating any work. Do not scale these drawings.

COPYRIGHT  
Axis Group Architects, Inc. shall retain all common law, statutory and other reserved rights. These drawings and related documents shall not be duplicated, disclosed, or otherwise used without written consent of Axis Group Architects, Inc.

2021/08/19	ISSUED FOR PERMIT
NO. DATE	REMARKS
REVISIONS	



Drawing Title  
PLUMBING - ROOF PLAN

Job No. 21-0064	Drawn DM
Scale As indicated	Date 08/06/2021

Sheet No.  
P310