

APPLICABLE CODES

CONTRACTOR SHALL COMPLY WITH ALL APPLICABLE STATE CODES WHETHER INDICATED HEREIN OR NOT.

- 2018 INTERNATIONAL BUILDING CODE (IBC)
- 2018 INTERNATIONAL MECHANICAL CODE (IMC)
- 2018 INTERNATIONAL PLUMBING CODE (IPC)
- 2018 UNIFORM PLUMBING CODE (UPC)
- 2018 INTERNATIONAL FUEL GAS CODE (IFGC)
- 2018 UNIFORM ENERGY CONSERVATION CODE (IECC)
- 2018 INTERNATIONAL EXISTING BUILDING CODE (IEBC)
- 2012 INTERNATIONAL GREEN CONSTRUCTION CODE (IGCC) - OPTIONAL
- 2017 NATIONAL ELECTRICAL CODE (NEC)

ACCESSIBILITY 2010 ADA GUIDELINES & 2017 ICC/ANSI A117.1 FAIR HOUSING ACT

SHEET INDEX

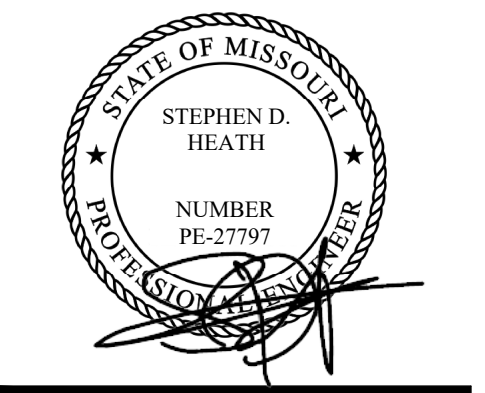
No.	SHEET NAME
PLUMBING	
P001	PLUMBING GENERAL NOTES
P002	PLUMBING SYMBOLS AND ABBREVIATIONS
P003	PLUMBING SPECIFICATIONS
P004	PLUMBING SCHEDULES
P200	PLUMBING FLOOR PLAN
P300	PLUMBING DETAILS

PLUMBING GENERAL NOTES

- DO NOT SCALE DRAWINGS. VERIFY DIMENSIONS IN FIELD PRIOR TO COMMENCING WORK.
- REFER TO ARCHITECTURAL DRAWINGS FOR EXACT PLUMBING FIXTURE LOCATIONS, MOUNTING HEIGHTS AND PLUMBING ROUGH-IN LOCATIONS. THIS SHALL INCLUDE, BUT NOT BE LIMITED TO ALL HANDICAPPED FIXTURES. OBTAIN EXACT FLOOR DRAIN AND FLOOR SINK LOCATIONS FROM FOOD SERVICE DRAWINGS. ROUGH-IN LOCATIONS FOR KITCHENS, BARS, ETC. TO BE TAKEN FROM APPROVED FOOD SERVICE SHOP DRAWINGS.
- ITEM DESIGNATIONS INDICATED ARE FOR PURPOSES OF THESE DOCUMENTS ONLY. CONTRACTOR SHALL VERIFY WITH THE OWNER ACTUAL DESIGNATION INFORMATION TO BE PROVIDED FOR EACH ITEM OF PLUMBING EQUIPMENT PRIOR TO NAMEPLATE ORDER RELEASE.
- THE PLUMBING DETAILS SHALL BE INCORPORATED INTO THE ASSOCIATED WORK AND PROVIDE GENERAL GUIDANCE AS TO THE INSTALLATION INTENT WHETHER REFERENCED TO OR NOT. IT IS THE CONTRACTOR'S RESPONSIBILITY TO PROVIDE ALL NECESSARY COMPONENTS FOR A COMPLETE INSTALLATION AND ENSURE THAT ALL INSTALLATIONS ARE IN ACCORDANCE WITH THE EQUIPMENT'S LISTING AND MANUFACTURER'S WRITTEN INSTALLATION INSTRUCTION.
- REFER TO APPROVED FOOD SERVICE DRAWINGS AND SCHEDULES FOR KITCHEN AND BAR LAYOUTS, PLUMBING REQUIREMENTS AND DETAILS. PROVIDE PIPING, VALVES, FIXTURES, INDIRECT WASTE, PRESSURE REDUCING VALVES, ETC. (NOT PROVIDED BY KITCHEN EQUIPMENT CONTRACTOR) AS REQUIRED TO MAKE A COMPLETE AND OPERABLE SYSTEM (INCLUDING HOOD DRAIN AND PIPING, VENTILATOR CONTROL PANEL PIPING, REFRIGERANT PIPING, BEER AND SYRUP LINE RACEWAYS, DRAIN PIPING FROM REFRIGERATION FAN COILS, ETC.). EXPOSED PIPING ABOVE COUNTER HEIGHT SHALL BE CHROME PLATED. PROVIDE REDUCED PRESSURE TYPE BACKFLOW AT CARBONATORS. VACUUM BREAKER AND PRESSURE REDUCING VALVES FOR HOOD HOT AND COLD WATER ARE FURNISHED BY KITCHEN EQUIPMENT CONTRACTOR AND INSTALLED BY DIVISION 22 (PLUMBING). COORDINATE WITH KITCHEN EQUIPMENT CONTRACTOR ACCORDINGLY. PROVIDE SHUT-OFF VALVES AND CHECK VALVES ON EACH BRANCH LINE TO HOSE REELS, SOAP DISPENSERS AND EACH HOT AND COLD WATER FAUCET THAT HAS A HOSE CONNECTION. PIPE 3/4" COLD WATER TO FILTER (BY KITCHEN EQUIPMENT CONTRACTOR) WITH SHUT-OFF VALVE PIPING FROM FILTER TO EQUIPMENT ROUTED IN WALL.
- PROVIDE STAINLESS STEEL WASTE PIPE AND P-TRAP AT ALL BARS, SODA STATIONS, WAITRESS STATIONS AND BEVERAGE STATIONS ABOVE GRADE (SCHEDULE 40 PVC FOR BELOW GRADE). RUN-OUTS SHALL BE A MINIMUM OF 20'-0" OF STAINLESS STEEL DRAIN PIPE OR TO THE MAIN DRAIN OF AREA SERVED.
- PROVIDE INSULATION ON ALL WASTE PIPING AND P-TRAPS FROM FLOOR DRAINS, SINKS AND TROUGHS RECEIVING INDIRECT WASTE FROM ICE MACHINES AND ICE BINS. PIPING INSULATION SHALL BE PROVIDED FROM THE DRAIN CONNECTION FOR A MINIMUM OF 15'-0" OR UNTIL THE NEXT BRANCH CONNECTION.
- PROVIDE SHEET METAL DRAIN PAN UNDER GRAVITY OR PUMPED DRAIN PIPING WHERE PIPING OCCURS ABOVE KITCHENS, FOOD SERVICE PREP, FUTURE TENANT KITCHENS OR FOOD SERVICE CORRIDORS. PIPE 3/4" DRAIN FROM DRAIN PAN TO OVER NEAREST FLOOR SINK.
- PROVIDE SHEET METAL DRAIN PAN UNDER PIPING WHERE PIPING OCCURS, ABOVE ANY ELECTRICAL ROOMS, IT CENTER OR ELECTRICAL SWITCH GEAR. PIPE 3/4" DRAIN FROM DRAIN PAN TO OVER NEAREST FLOOR SINK.
- REFER TO APPROVED FOOD SERVICE DRAWINGS FOR HOT AND COLD WATER HOSE BIBB LOCATIONS UNDER HAND SINKS IN KITCHEN AREAS.
- SEISMIC RESTRAINTS SHALL BE PROVIDED PER THE LATEST ADOPTED STANDARD BUILDING CODE AND THE SMACNA SEISMIC RESTRAINT MANUAL GUIDELINES FOR MECHANICAL SYSTEMS. THE CONTRACTOR SHALL SUBMIT SHOP DRAWINGS OF THE PROPOSED RESTRAINTS, STRUCTURAL ATTACHMENT METHODS AND RESTRAINT LOCATIONS TO THE ARCHITECT FOR REVIEW. THE SUBMITTED DOCUMENTS SHALL BE PREPARED AND STAMPED BY A STRUCTURAL ENGINEER LICENSED IN THE PROJECT STATE.
- COORDINATE SPRINKLER DRAIN REQUIREMENTS AND LOCATIONS WITH THE FIRE PROTECTION DIVISION OF WORK.
- REFER TO CIVIL DRAWINGS FOR INVERT AT SITE UTILITY POINTS OF CONNECTION. PROVIDE OFFSET AND INCREASER FOR STORM DRAIN OR SEWER AS REQUIRED FOR CONNECTION TO CIVIL.
- GREASE TRAP INSTALLATION SHALL CONFORM WITH APPLICABLE CITY REQUIREMENTS. MANHOLE SPACING SHALL NOT EXCEED 10'-0" ON CENTER. PROVIDE QUANTITY AS REQUIRED TO COMPLY WITH MAXIMUM SPACING. COORDINATE WITH CIVIL DIVISION OF WORK.
- PROVIDE TRAP PRIMERS FOR AREAS OF INFREQUENT USE, INCLUDING FLOOR DRAINS IN RESTROOMS AND MECHANICAL ROOMS. EQUAL TO PRECISION PRODUCTS CO. "PRIME-RITE" WITH DISTRIBUTION UNITS FOR MULTIPLE FLOOR DRAINS AND FLOOR SINKS. TRAP PRIMER SHALL BE ACCESSIBLE AND INSTALLED PER MANUFACTURER'S REQUIREMENTS. PROVIDE LINE SIZE SHUT-OFF VALVE AHEAD OF EACH TRAP PRIMER AND PRIMER LINE SHALL BE INSTALLED ON A COLD WATER LINE LESS THAN 2" DIAMETER. ALL ELECTRONIC TYPE TRAP PRIMERS SHALL BE PPP "PRIME-TIME" ELECTRONIC TRAP PRIMING MANIFOLD WITH FOUR (4) TO 30 OUTLETS, VACUUM BREAKER, 24 HOUR CLOCK, MANUAL OVERRIDE, SOLENOID VALVE, CALIBRATED MANIFOLD WITH 1/2" OUTLET COMPRESSION FITTINGS, PROVIDE 3/4" SHUT-OFF VALVE ON INLET. (ELECTRONIC TRAP PRIMERS TO BE LOCATED IN MECHANICAL ROOMS AND CONCRETE BLOCK WALLS.)
- REFER TO BALANCING VALVE ASSEMBLY DESIGN DETAIL FOR NOMINAL GPM AT EACH HOT WATER RETURN BRANCH LINE CONNECTION.
- HOT WATER RETURN PIPING BRANCH LINES TO DROP DOWN IN WALL AND CONNECT TO HOT WATER SUPPLY AT STOPS OR AT TEMPERING STATIONS. REFER TO DESIGN DETAILS FOR DIAGRAMS SHOWING CONNECTIONS.
- ARRANGE WATER HEATERS AND PIPING TO PROVIDE EASE OF DISASSEMBLY AND MAINTENANCE.
- GREASE WASTE PIPING SHALL PITCH AT 2% PER FOOT.
- PROVIDE A 6mm POLYETHYLENE SLEEVE EQUAL TO IPS WATER-TITE FOR COPPER DOMESTIC WATER PIPE BELOW SLAB.
- HOT AND COLD WATER SHUT-OFF VALVES AND HOT WATER RETURN BALANCING VALVES SHALL BE LOCATED TO BE EASILY ACCESSED.
- PROVIDE STAINLESS STEEL BASKET AT KITCHEN AND BAR FLOOR SINKS. DRAIN SPECIALITIES MODEL NUMBER DS-200.
- PROVIDE WALL CLEANOUTS AT URINALS IN ACCORDANCE WITH APPLICABLE SECTIONS OF THE ADOPTED STANDARD PLUMBING CODE.
- VENTS THROUGH ROOF SHALL BE A MINIMUM OF 10'-0" FROM ANY OUTSIDE AIR INTAKES AND BUILDING OPENINGS.
- EQUIPMENT AND PIPING LOCATIONS SHOWN FROM THE BEST AVAILABLE INFORMATION. CONTRACTOR SHALL FIELD VERIFY SIZE AND LOCATIONS PRIOR TO START OF WORK. IF SYSTEMS ARE NOT AS SHOWN IN DRAWINGS, REPORT DEVIATIONS TO ARCHITECT/ENGINEER WITHIN 48 HOURS OF DISCOVERY.
- THE CONTRACTOR SHALL BE RESPONSIBLE FOR THE REPAIR AND PATCHING OF DAMAGED ARCHITECTURAL COMPONENTS TO REMAIN DURING THE REMOVAL OF DESIGNATED SYSTEMS. COORDINATE REPAIR REQUIREMENTS WITH ARCHITECT.
- RESOLVE ALL QUESTIONS OR CONFLICTS WITH ENGINEER BEFORE ANY EQUIPMENT IS ORDERED, MATERIALS FABRICATED OR SYSTEMS INSTALLED.
- COORDINATE THE INSTALLATION OF MECHANICAL SYSTEMS WITH OTHER TRADES.
- COORDINATE ALL PENETRATIONS THROUGH STRUCTURAL MEMBERS WITH THE GENERAL CONTRACTOR.
- COORDINATE AND VERIFY THAT ALL OPENINGS IN WALLS ABOVE CEILING / DOOR LOUVERS / DOOR UNDERCUTS ARE PROVIDED AS INDICATED ON THESE DRAWINGS.
- COORDINATE EXACT SIZE OF EQUIPMENT HOUSEKEEPING PAD WITH EQUIPMENT OVERALL FOOTPRINT DIMENSIONS.
- LEVEL ALL EQUIPMENT CURBS / BASES PRIOR TO INSTALLATION OF ANY EQUIPMENT.
- INSTALL FULL SIZE CONDENSATE DRAIN WITH TRAP SEAL DEPTH EQUAL TO 1.5 X UNIT TOTAL STATIC PRESSURE FOR EACH COOLING COIL. DISCHARGE DRAIN TO ROOF DRAIN FOR ROOFTOP UNITS AND TO FLOOR DRAIN FOR FAN COIL UNITS AND INDOOR AIR HANDLING UNITS.
- SEAL ALL WALL AND ROOF PENETRATIONS WATERTIGHT WITH SILICONE CAULKING AND BACKER ROD.
- PROVIDE 30x30 ACCESS PANELS IN "HARD" CEILINGS FOR ACCESS TO ALL MOTORS / CONTROLS / BALANCING DAMPERS AND FIRE DAMPERS.
- PROVIDE OFFSETS AS NECESSARY TO ACCOMMODATE STRUCTURE AND OTHER TRADES.



Kinetic Design
 20381 Lake Forest Dr. Suite B16
 Lake Forest, CA 92630
 Main: 951.710.6334 Web: kineticdesign.build
 Email: info@kineticdesign.build



NOT FOR CONSTRUCTION
 THIS DRAWING IS PROVIDED FOR INFORMATIONAL PURPOSES ONLY. APPROVAL FROM THE ARCHITECT AND GOVERNING JURISDICTIONS MUST BE OBTAINED PRIOR TO THE ISSUANCE OF CONSTRUCTION DOCUMENTS. THE ARCHITECT AND HIS CONSULTANTS ASSUME NO RESPONSIBILITY FOR CONSTRUCTION BIDS OR CONSTRUCTION PERFORMED FROM THESE DRAWINGS.

REVISIONS		
No.	DATE	DESCRIPTION

CLIENT INFORMATION



NEKTER - LEE'S SUMMIT, MO
 940 NW PRYOR ROAD, RETAIL SPACE 5,
 LEE'S SUMMIT, MISSOURI 64081

PROJECT NAME
 SHEET NAME

PLUMBING GENERAL NOTES

DRAWN	R.H.	CHECKED
DATE		07/30/21
SCALE		AS NOTED
PROJECT NUMBER		
SHEET		

P001

THESE DRAWINGS AND THE INFORMATION CONTAINED ON THEM ARE THE SOLE PROPERTY OF KINETIC DESIGN. ANY USE OF THESE DOCUMENTS OR THE INFORMATION CONTAINED HEREIN, CAN ONLY BE USED WITH WRITTEN PERMISSION FROM KINETIC DESIGN. KINETIC DESIGN ASSUMES NO LIABILITY FOR THESE DRAWINGS OR INFORMATION CONTAINED HEREIN.

PIPING INSULATION TABLE

FLUID/OUTSIDE TEMPERATURE	MINIMUM PIPE INSULATION				
	PIPE DIAMETER (INCH)				
	≤ 1"	1.25"-2"	2.5"-4"	5"-6"	≥ 8"
308-460	2.5	2.5	3.0	3.5	3.5
251-305	2.0	2.5	2.5	3.0	3.0
201-250	1.5	1.5	2.0	2.0	2.0
105-200	1.0	1.0	1.5	1.5	1.5
61-104	1.0	1.0	1.5	1.5	1.5
40-60	0.5	.75	1.0	1.0	1.0
BELOW 40	1.0	1.5	1.5	1.5	1.5
STEAM CONDENSATE	1.0	1.5	2.0	2.0	2.0

THE THICKNESS OF INSULATION LISTED IN THIS TABLE IS BASED ON MATERIALS HAVING A THERMAL RESISTANCE IN THE RANGE OF R-4.0 TO R-4.6 PER INCH. ADJUSTMENTS ARE REQUIRED FOR INSULATION MATERIALS OUTSIDE THIS RANGE.

PLUMBING FIXTURE AND EQUIPMENT SCHEDULE/CONNECTIONS

MARK	FIXTURE	FIXTURE ROUGH-IN				DESCRIPTION
		W	V	CW	HW	
WC-1	WATER CLOSET (FLUSH TANK)	4"	2"	3/4"	-	AMERICAN STANDARD CADET FLOWIS MODEL # 2467.100 ELONGATED PRESSURE-ASSISTED TOILET WITH 1.1 GPF. VITREOUS CHINA. ADA COMPLIANT, OR EQUIVALENT.
MS-1	MOP SINK	3"	2"	3/4"	3/4"	MUSTEE/T&S MODEL #63M/ B-0665-BSTR COMPOSITE SINK WITH BACK FLOW PREVENTER DEVICE WITH MOUNTING MIXING VALVE MUSTEE/ T& S 63M / B-0665-BSTR.
L-1	LAVATORY	2"	2"	1/2"	1/2"	AMERICAN STANDARD LUCERNE WALL MOUNTED SINK MODEL #0355.012, COMPLETE WITH T&S BRASS MODEL # B-2711. MOUNT PER ADA/T-24 REQUIREMENTS.
MV-1	MIXING VALVE	-	-	1/2"	1/2"	MIXING VALVE WATTS - MODEL #LFMMV-M1, SET OUTLET TEMPERATURE AT 105°F.
TP-1	TRAP PRIMER	-	-	1/2"	-	PRECISION PLUMBING PRODUCTS TRAP PRIMER MODEL PR-500, AUTOMATIC PRESSURE DROP ACTIVATED, OR EQUIVALENT.
FS-1	FLOOR SINK	2"	1-1/2"	-	-	FLOOR SINK ZURN MODEL # Z1900-25; 12X12 SQ.X6" DEEP INDIRECT SANITARY WASTE DRAIN.
BFP-1	BACK FLOW PREVENTER	-	-	1/2"	-	ZURN, MODEL # 740 ; DOUBLE CHECK VALVE ASSEMBLY.
CP-1	RE-CIRCULATION PUMP	-	-	1/2"	-	BELL & GOSSETT MODEL NO NBF-12U-LW, ALL BRONZE LEAD FREE CIRCULATOR WITH UNION CONNECTION, 115V, 55 WATT, 2800 RPM, 5 GPM FLOW RATE AT 8 FEET OF HEAD. OPERATING WEIGHT = 10 LBS.
WCO	WALL CLEANOUT	SEE PLANS	-	-	-	ZURN WALL CLEANOUT MODEL Z1441-VP, DURA-COATED CAST IRON BODY, GAS AND WATERTIGHT, VANDAL PROOF SCREWS, COORDINATE FINAL LOCATIONS AND FINISH WITH ARCHITECTURAL.
FD-1	FLOOR DRAIN	2"	1-1/2"	-	-	ZURN MEDIUM DUTY FLOOR DRAIN MODEL Z507, 7" TOP DRAIN, DURA-COATED CAST IRON BODY, OR EQUIVALENT. 3' / 2% SLOPE TO ALL FLOOR DRAINS. OR EQUIVALENT.
HS-1	HAND SINK	2"	1-1/2"	1/2"	1/2"	KROWNE HAND SINK MODEL # HS-26L W/ SPLASH GUARDS, T&S BRASS FAUCET WITH MIXING VALVE (MV-1)
3CS-1	3-COMPARTMENT SINK	2" INDIRECT	1-1/2"	1/2"	1/2"	GSW, 3-COMPARTMENT SINK MODEL # SE18183C COMPLETE WITH PRE-RINSE AND FAUCET ASSEMBLY T & S BRASS. MUST HAVE A WASTE HANDLE BRACKET PER BOWL FOR TRAP. COMPLETE WITH WASTE VALVE T&S BRASS.
SF-1	SINGLE FAUCET	-	-	1/2"	-	T&B FAUCET MODEL # B-0212 WITH WATER FILTER (WF-1) .
IM-1	ICE MAKER	INDIRECT	-	1/2"	-	ICE-O-MATIC ICE MAKER WITH WATER FILTER MODEL # IFQ1.
GT-1	GREASE TRAP	2"	-	-	-	ENDURA HYDRO-MECHANICAL GREASE TRAP MODEL # 3950A03, 50GPM @100 lbs CAPACITY.
WF-1	WATER FILTER	--	--	1/2"	--	WATER FILTER MODEL # IFQ1 SINGLE FILTER FLOW RATE 1.5 GPM, 3 lbs.
WH-1	ELECTRIC WATER HEATER	-	-	3/4"	3/4"	A.O SMITH ELECTRIC WATER HEATER MODEL # DEN-52 .
ET-1	EXPANSION TANK	--	--	1/2"	--	EXPANSION TANK AMTROL THERM-X-TROL EXPANSION TANK MODEL ST-5, 2.0 GALLONS

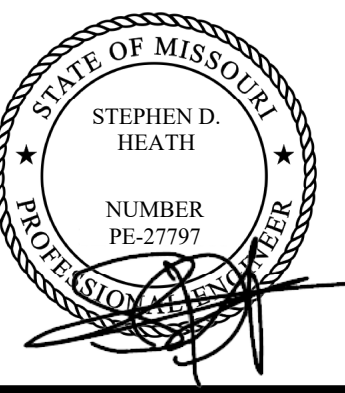
NOTES: 1. CONTRACTOR TO VERIFY THAT ALL PLUMBING FIXTURES ARE FOR INSTALLATION ON EXPOSED SLAB.
2. SEE ARCHITECT PLANS SPECIFICATIONS FOR ADDITIONAL INFORMATION.

WATER AND DRAINAGE CALCULATION

Fixture Type	QTY	Each			Total		
		W	CW(100%)	HW	W	CW(100%)	HW(75%)
Water Closet (FT)	1	4.0	2.5	0.000	4.0	2.5	0.000
Lavatory	1	1.0	1.0	0.750	1.0	1.0	0.750
3-Comp. Sink	1	3.0	4.0	3.000	3.0	4.0	3.000
Sink (HS-PS)	3	2.0	1.5	1.125	6.0	4.5	3.375
Mop Sink	1	3.0	3.0	2.250	3.0	3.0	2.250
Hose Bibb	1	0.0	2.5	0.000	0.0	2.5	0.000
Hose Bibb (additional)	1	0.0	1.5	0.000	0.0	1.5	0.000
Ice Maker+SF	2	0.0	1.0	0.000	0.0	2.0	0.000
Floor Sink/Drain	6	2.0	0.5	0.000	12.0	3.0	0.000
Total		0.0	1.0	0.000	0.0	0.0	0.000
		2.0	0.0	0.000	0.0	0.0	0.000
	17				29.0	24.0	9.375
						17	GPM



Kinetic Design
20381 Lake Forest Dr. Suite B16
Lake Forest, CA. 92630
Main: 951.710.6334 Web: kineticdesign.build
Email: info@kineticdesign.build



NOT FOR CONSTRUCTION
THIS DRAWING IS PROVIDED FOR INFORMATIONAL PURPOSES ONLY. APPROVAL FROM THE ARCHITECT AND GOVERNING JURISDICTIONS MUST BE OBTAINED PRIOR TO THE ISSUANCE OF CONSTRUCTION DOCUMENTS. THE ARCHITECT AND HIS CONSULTANTS ASSUME NO RESPONSIBILITY FOR CONSTRUCTION BID'S OR CONSTRUCTION PERFORMED FROM THESE DRAWINGS.

REVISIONS		
No.	DATE	DESCRIPTION

CLIENT INFORMATION



PROJECT NAME
NEKTER - LEE'S SUMMIT, MO
940 NW PRYOR ROAD, RETAIL SPACE 5,
LEE'S SUMMIT, MISSOURI 64081
SHEET NAME
PLUMBING SCHEDULES

DRAWN _____ CHECKED _____
DATE _____ 07/30/21
SCALE _____ AS NOTED
PROJECT NUMBER _____
SHEET
P004

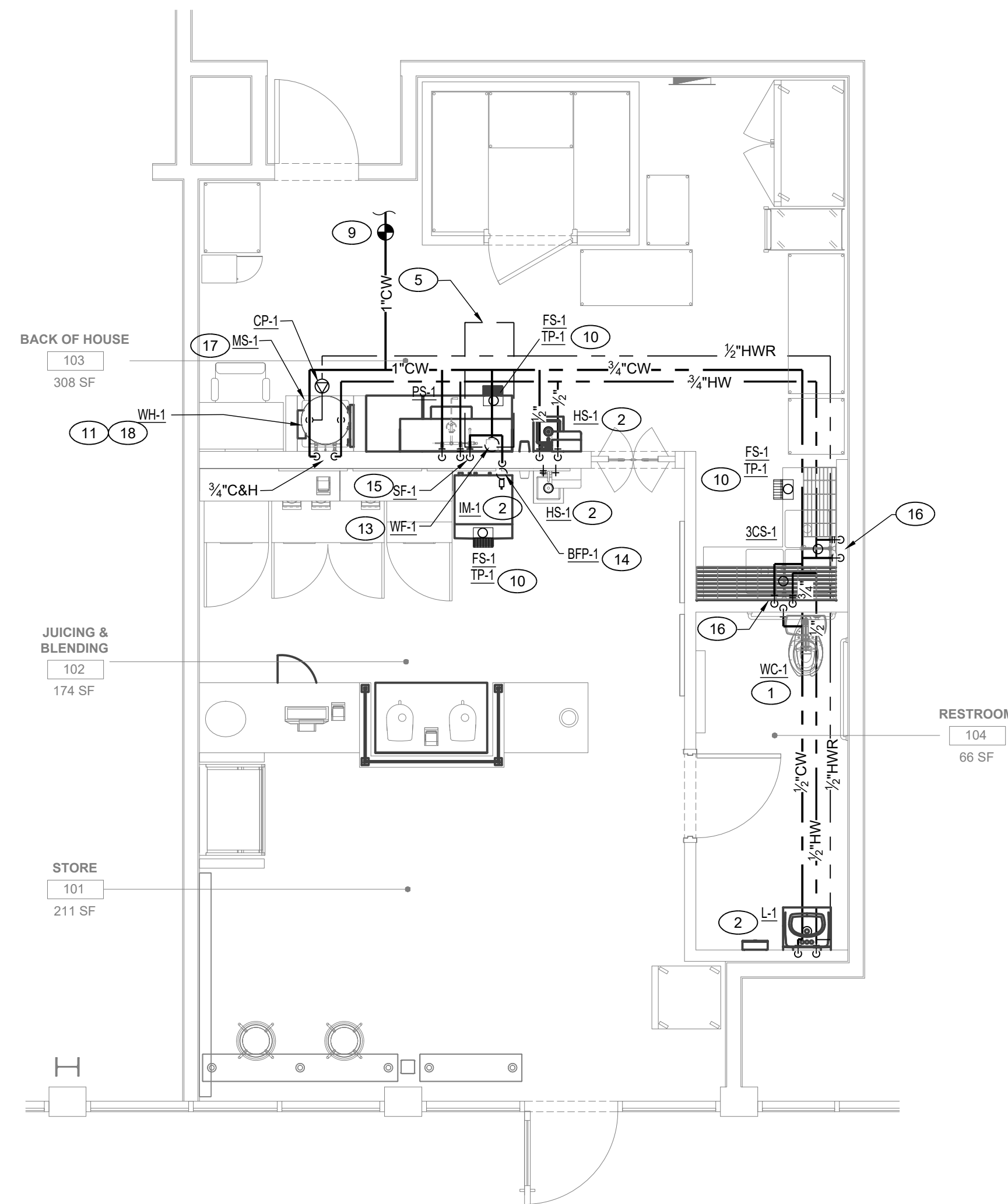
THESE DRAWINGS AND THE INFORMATION CONTAINED ON THEM ARE THE SOLE PROPERTY OF KINETIC DESIGN. ANY USE OF THESE DOCUMENTS OR THE INFORMATION CONTAINED HEREIN, CAN ONLY BE USED WITH WRITTEN PERMISSION FROM KINETIC DESIGN. KINETIC DESIGN ASSUMES NO LIABILITY FOR THESE DRAWINGS OR INFORMATION CONTAINED HEREIN.

GENERAL NOTES

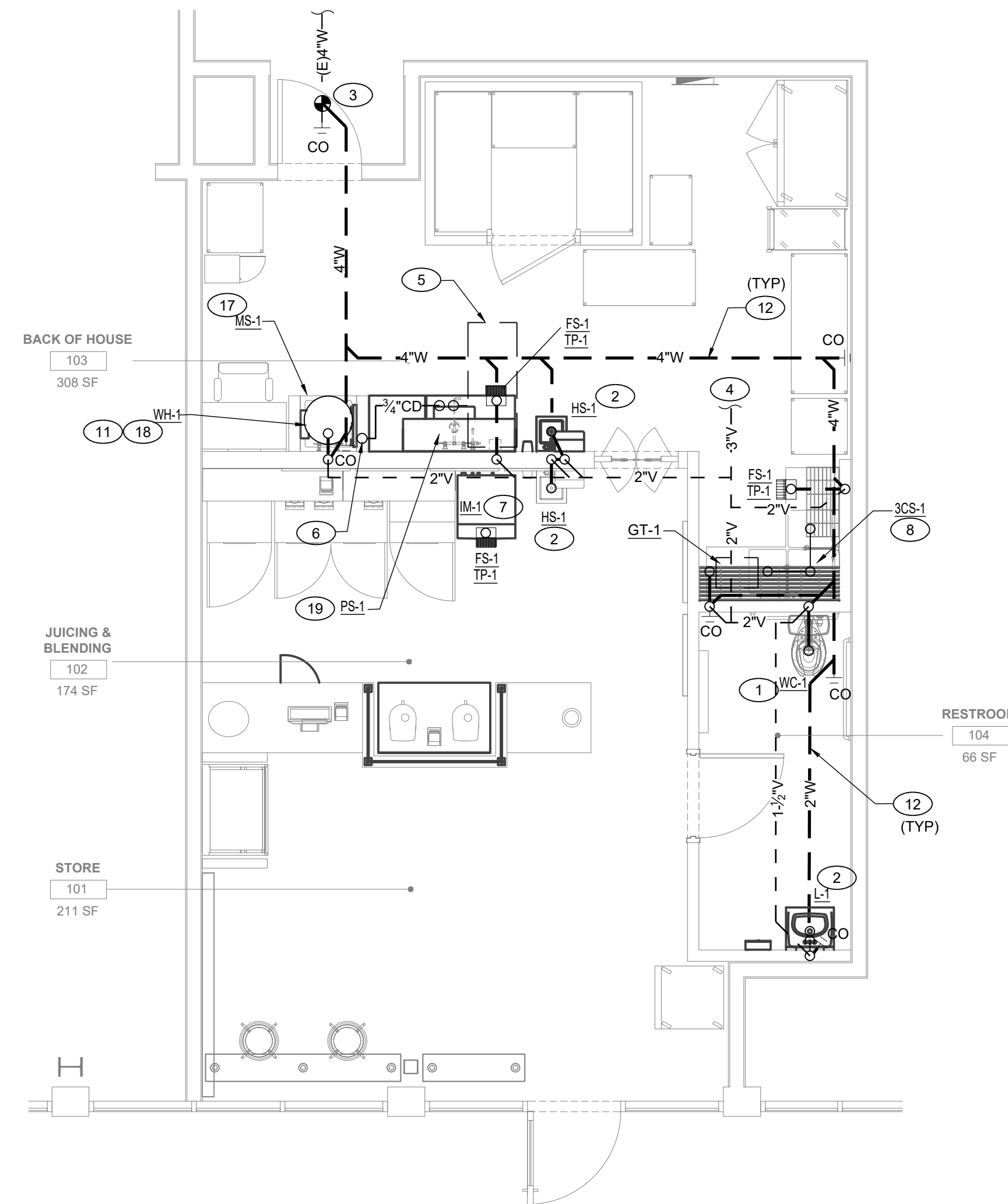
- A PRIOR TO DETAILING & INSTALLING PLUMBING AND FIRE PROTECTION PIPING COORDINATE EXACT ROUTING AND ELEVATIONS WITH MECHANICAL, ELECTRICAL AND FIRE SPRINKLER CONTRACTORS. PROVIDE WRITTEN CONFIRMATION THAT THIS COORDINATION HAS BEEN IMPLEMENTED PRIOR TO PROCEEDING WITH INSTALLATION OF PIPING.
- B PRIOR TO INSTALLATION OF SEWER AND WATER PIPING BELOW GRADE COORDINATE EXACT LOCATIONS AND DEPTHS OF BURIAL WITH CIVIL AND FOUNDATION DRAWINGS AND CORRESPONDING ENGINEERS.
- C ALL PLUMBING FIXTURES SHALL BE WATER CONSERVATION TYPE AS MANDATED BY LOCAL BUILDING DEPARTMENT.
- D ALL PLUMBING FIXTURES SHALL HAVE AN ANGLED SHUT OFF VALVE.
- E ALL PLUMBING FIXTURES SHALL HAVE A TRAP INSTALLED AND SHALL BE PROPERLY VENTED IN ORDER TO MAINTAIN THE TRAP SEAL.
- F ALL PLUMBING FLOOR SINKS, FLOOR DRAINS, MOP SINKS, AND HUB DRAINS SHALL HAVE A TRAP PRIMER INSTALLED AND SHALL BE PROPERLY VENTED IN ORDER TO MAINTAIN THE TRAP SEAL.
- G FAUCET CONTROLS AND OPERATING MECHANISMS SHALL BE OPERABLE WITH ONE HAND AND SHALL NOT REQUIRE TIGHT GRASPING, PINCHING, OR TWISTING OF THE WRIST. THE FORCE REQUIRED TO ACTIVATE CONTROLS SHALL NOT BE GREATER THAN 5 LB-FT.
- H HOT WATER AND DRAIN PIPES EXPOSED UNDER SINKS SHALL BE INSULATED OR OTHERWISE CONFIGURED SO AS TO PROTECT AGAINST CONTACT. THERE SHALL BE NO SHARP OR ABRASIVE SURFACES UNDER SINKS.
- I ALL WATER CLOSETS DESIGNATED AS HANDICAP SHALL BE INSTALLED SUCH THAT THE ACTUATOR IS OPERABLE FROM THE WIDE SIDE OF THE WATER CLOSET.
- J NOT ALL PIPING, DUCTWORK, OR DEVICES HAVE BEEN SHOWN FOR CLARITY. CONTRACTOR IS RESPONSIBLE FOR ALL WORK IN AND AROUND SYSTEMS NOT SHOWN HEREIN.
- K THE CONTRACTOR SHALL, BEFORE SUBMITTING ANY PROPOSAL, EXAMINE THE SITE AND SHALL DETERMINE FOR HIMSELF THE CONDITIONS THAT MAY AFFECT THE WORK. NO ALLOWANCE SHALL BE MADE IF THE CONTRACTOR FAILS TO MAKE SUCH EXAMINATIONS.
- L PRIOR TO STARTING CONSTRUCTION, DETERMINE EXACT INVERT ELEVATION, SIZE, DEPTH, DIRECTION OF FLOW AND LOCATION OF EXISTING UTILITIES WHERE CONNECTIONS ARE TO BE MADE OR INTERSECTIONS OCCUR. NOTIFY ARCHITECT OR ENGINEER FOR DISCREPANCY BETWEEN DRAWINGS AND ACTUAL FIELD CONDITIONS. WORK BACK TOWARD BUILDING FROM UTILITY CONNECTION FOR ALL PIPING SYSTEMS.
- M CONTRACTOR TO REMOVE ALL EXISTING PIPING THAT WILL NOT BE REUSED. ABANDONED PIPES ARE NOT ACCEPTABLE.
- N CONTRACTOR SHALL PROVIDE AND INSTALL ANY INCIDENTAL WORK OR ITEMS NOT SHOWN OR SPECIFIED WHICH ARE NECESSARY TO PROVIDE A COMPLETE AND WORKABLE SYSTEM.

SHEET NOTES:

- 1 3/4" CW WATER 4" WASTE AND 2" VENT CONNECT TO WATER CLOSET.
- 2 1/2" CW, 1/2" HW, 2" WASTE AND 1-1/2" VENT CONNECT TO LAVATORY /SINK. PROVIDE MIXING VALVE.
- 3 POINT OF CONNECTION TO EXISTING WASTE LINE. CONTRACTOR TO VERIFY IN THE FIELD EXACT LOCATION OF THE EXISTING WASTE LINE PRIOR TO START OF WORK.
- 4 3" VENT PIPE TO POINT OF CONNECTION OF EXISTING VENT PIPE IN CEILING. CONTRACTOR TO VERIFY IN THE FIELD EXACT LOCATION AND SIZE OF THE EXISTING VENT LINE PRIOR TO START OF WORK.
- 5 EXISTING MECHANICAL UNIT ON CEILING SPACE.
- 6 PROVIDE 3/4" CD LINE FROM FAN COIL DOWN IN WALL, AND TERMINATE TO MOP SINK.
- 7 EXTEND INDIRECT DRAIN PIPING FROM ICE MAKER TO FLOOR SINK.
- 8 EXTEND INDIRECT DRAIN PIPING FROM 3-COMP. SINK TO FLOOR SINK.
- 9 POINT OF CONNECTION OF EXISTING COLD WATER ON CEILING. EXISTING SUB-METER AND SPACE SHUT-OFF VALVE TO REMAIN. CONTRACTOR TO VERIFY IN THE FIELD, EXACT LOCATION PRIOR TO START OF WORK.
- 10 1/2" COLD WATER DOWN TO TRAP PRIMER FOR FLOOR DRAIN. PROVIDE 10"X10" ACCESS PANEL FOR TRAP-PRIMING DEVICE. INSTALL TP VALVE AT LEAST 12" ABOVE FINISHED FLOOR WITH BALL VALVE.
- 11 INSTALL ELECTRIC WATER HEATER HANGING ON WALL ABOVE MOP SINK. SEE SHEET P004 FOR MORE INFORMATION.
- 12 WASTE LINE ON THE BASEMENT CEILING SPACE. CONTRACTOR VERIFY IN THE FIELD, FOR EXACT LOCATION OF NEW WASTE LINE.
- 13 WATER FILTER LOCATION FOR ICE MAKER AND SINGLE FAUCET.
- 14 PROVIDE BFP FOR FILTERED WATER TO ICE MACHINE.
- 15 1/2" COLD FILTERED WATER CONNECT TO SINGLE FAUCET.
- 16 1/2" CW AND 1/2" HW CONNECT TO 3-COMP. SINK.
- 17 3/4" CW, 3/4" HW, 3" WASTE AND 2" VENT CONNECT TO MOP SINK.
- 18 1" CW AND 1" HW CONNECT TO WATER HEATER, 3/4" DRAIN LINE DOWN TO MOP SINK. TERMINATE W/2" AIR GAP.
- 19 EXTEND INDIRECT DRAIN PIPING FROM PRE. SINK TO FLOOR SINK.

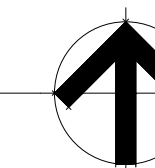


DOMESTIC WATER



WASTE AND VENT

1 PLUMBING FLOOR PLAN
1/4" = 1'-0"



KD
Kinetic Design
20381 Lake Forest Dr. Suite B16
Lake Forest, CA. 92630
Main: 951.710.6334 Web: kineticdesign.build
Email: info@kineticdesign.build



NOT FOR CONSTRUCTION
THIS DRAWING IS PROVIDED FOR INFORMATIONAL PURPOSES ONLY. APPROVAL FROM THE ARCHITECT AND GOVERNING JURISDICTIONS MUST BE OBTAINED PRIOR TO THE ISSUANCE OF CONSTRUCTION DOCUMENTS. THE ARCHITECT AND HIS CONSULTANTS ASSUME NO RESPONSIBILITY FOR CONSTRUCTION BIDS OR CONSTRUCTION PERFORMED FROM THESE DRAWINGS.

REVISIONS		
No.	DATE	DESCRIPTION

CLIENT INFORMATION



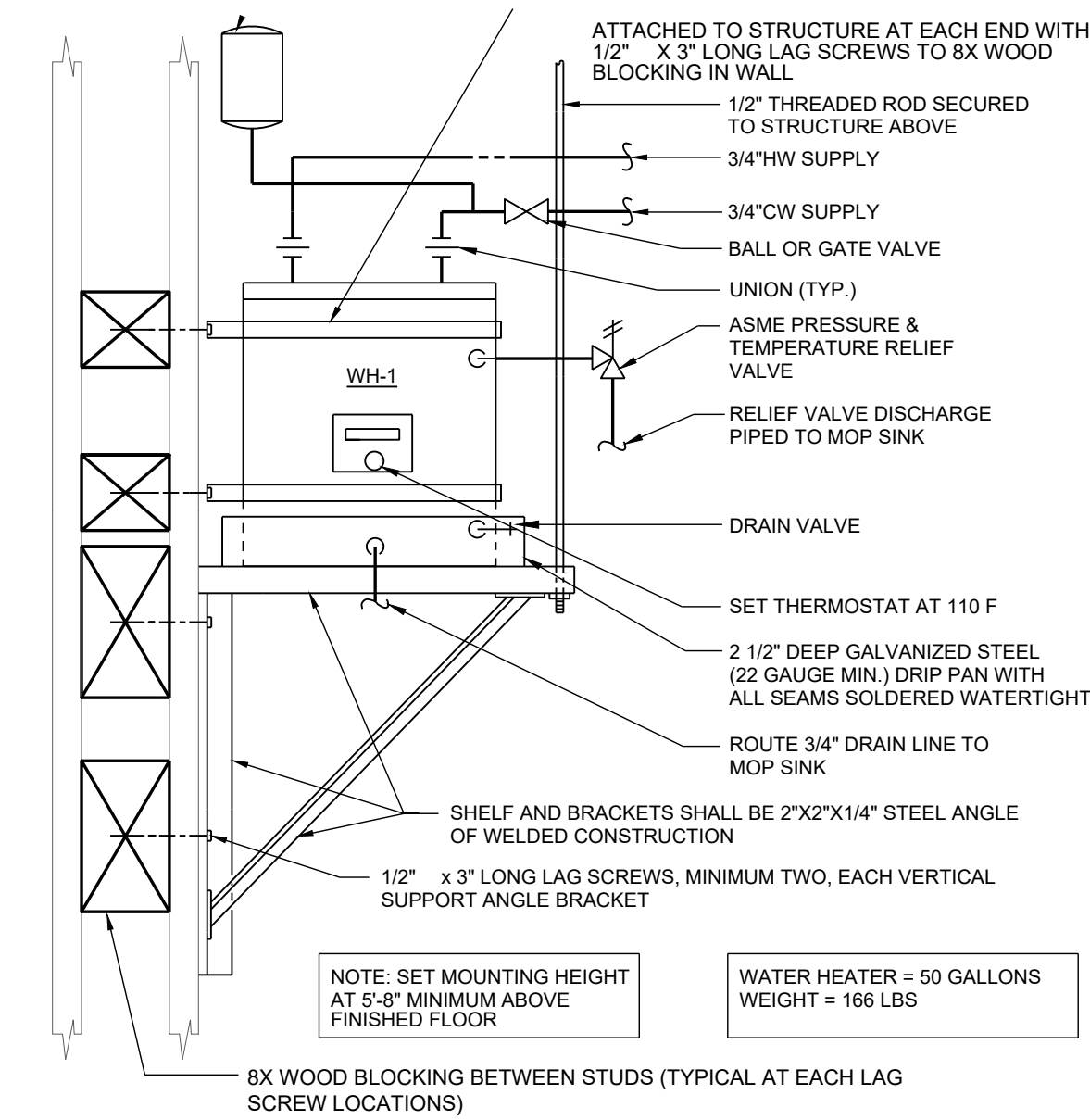
PROJECT NAME
NEKTER - LEE'S SUMMIT, MO
940 NW PRYOR ROAD, RETAIL SPACE 5,
LEE'S SUMMIT, MISSOURI 64081

SHEET NAME
PLUMBING FLOOR PLAN

DRAWN	R.H.	CHECKED	
DATE			07/30/21
SCALE			AS NOTED
PROJECT NUMBER			
SHEET			

P200

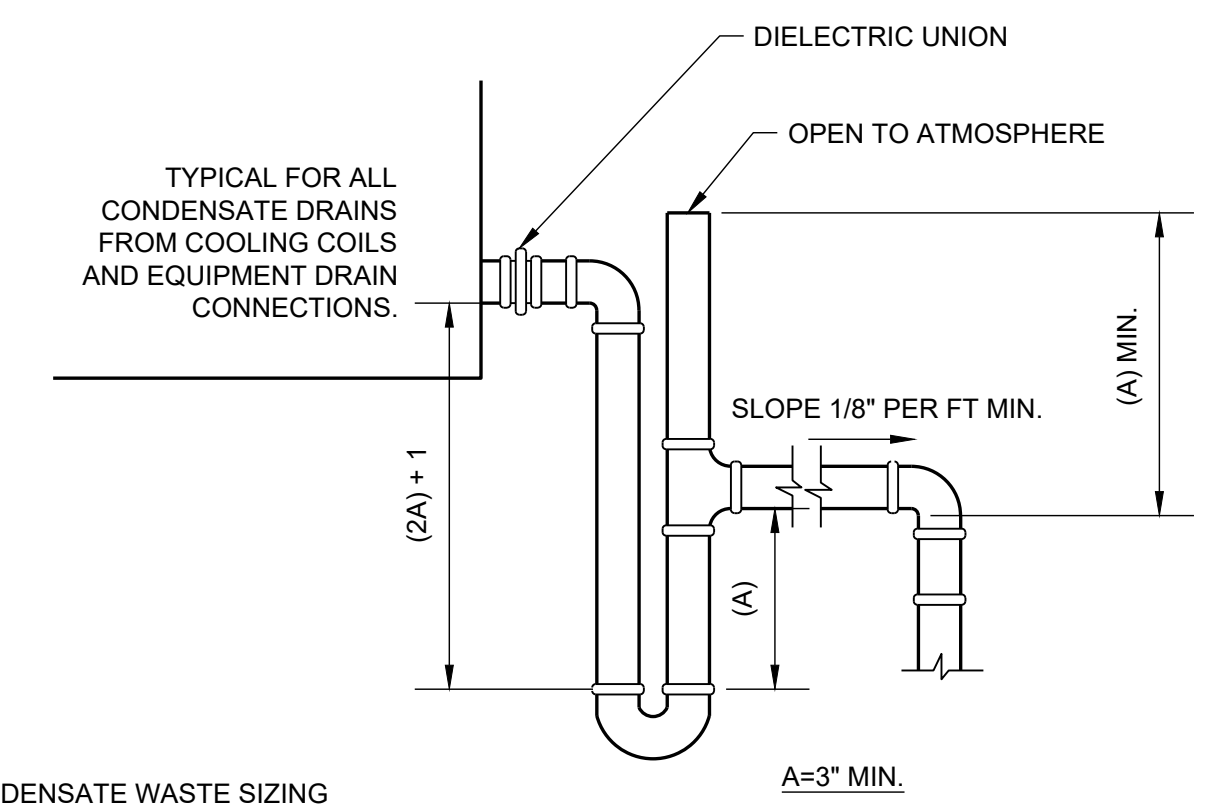
THESE DRAWINGS AND THE INFORMATION CONTAINED ON THEM ARE THE SOLE PROPERTY OF KINETIC DESIGN. ANY USE OF THESE DOCUMENTS OR THE INFORMATION CONTAINED HEREIN, CAN ONLY BE USED WITH WRITTEN PERMISSION FROM KINETIC DESIGN. KINETIC DESIGN ASSUMES NO LIABILITY FOR THESE DRAWINGS OR INFORMATION CONTAINED HEREIN.



TYPICAL WATER HEATER DETAIL

4

SCALE: NONE



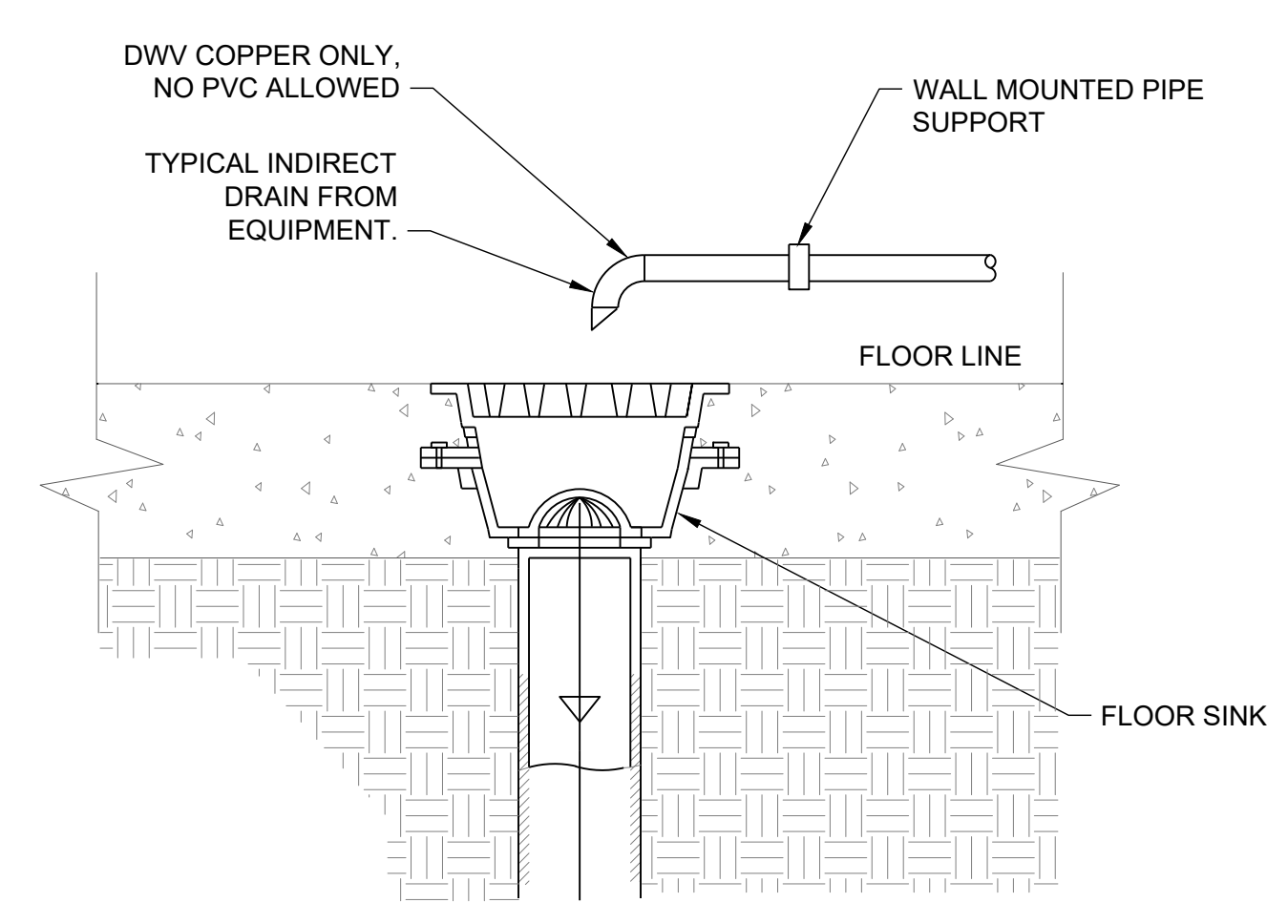
CONDENSATE WASTE SIZING
EQUIPMENT COOLING CAPACITY MIN. PIPE DIAMETER

UP TO 20 TONS	3/4 INCH
21 TO 40 TONS	1 INCH
41 TO 90 TONS	1-1/4 INCH

TYPICAL CONDENSATE DRAIN DETAIL

1

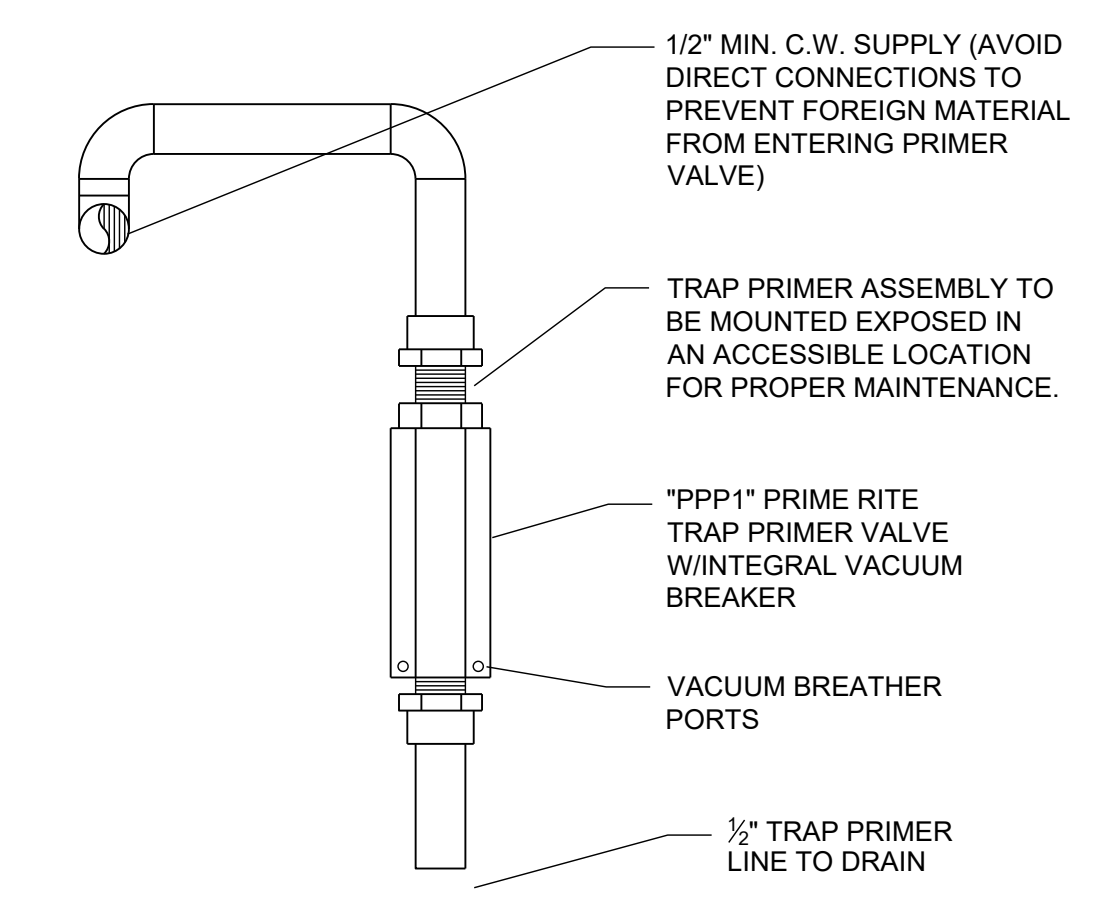
SCALE: NONE



TYPICAL INDIRECT DRAIN

5

SCALE: NONE

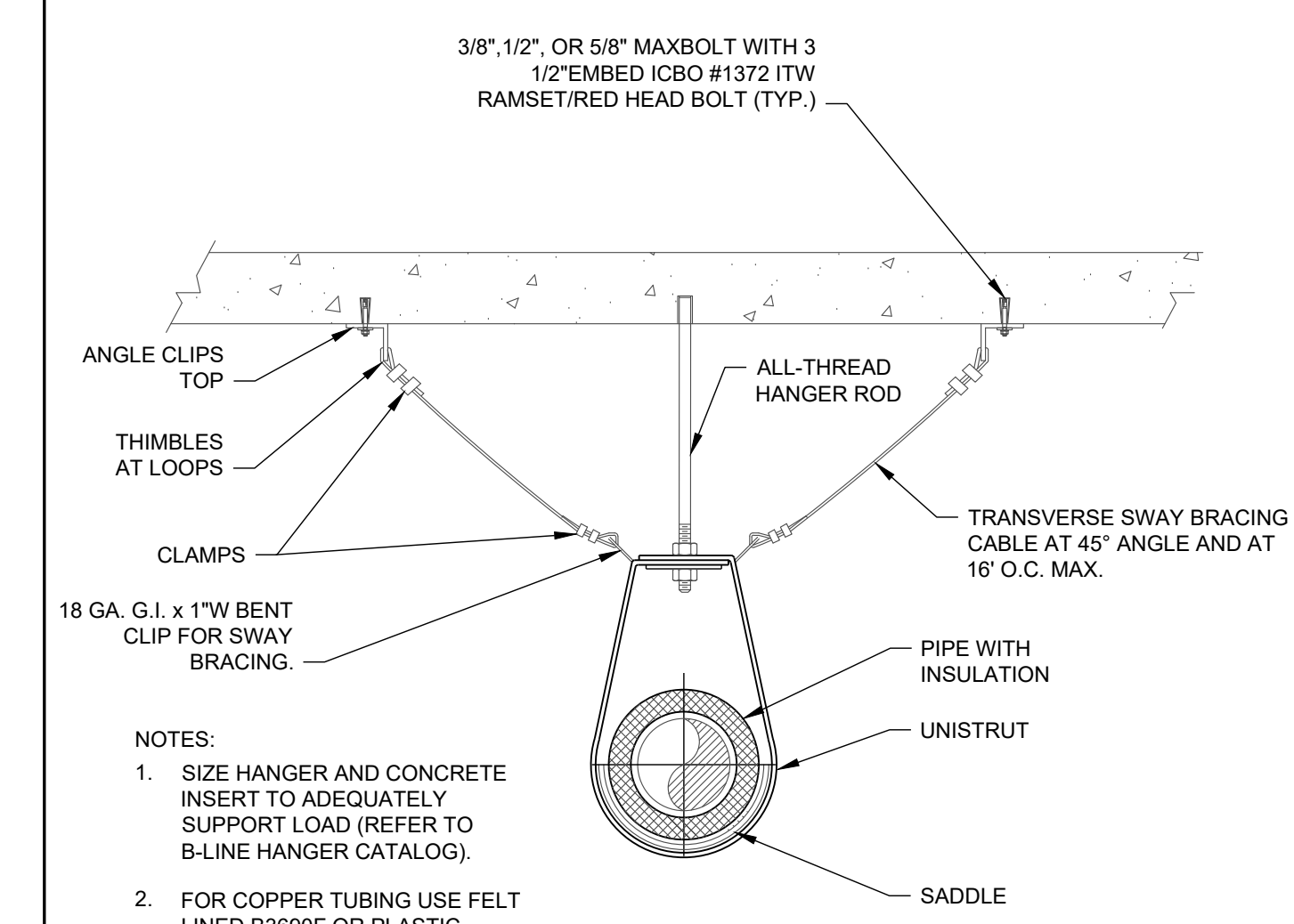


ARRANGEMENT SHOWN IS SCHEMATIC. MODIFY TO SUIT MANUFACTURER'S STANDARDS, MEET LOCAL CODE REQUIREMENTS, AND ALL OTHER APPLICABLE CODES AND REQUIREMENTS. FOR INSTALLATION IN MECHANICAL AND UTILITY ROOMS.

TRAP PRIMER DETAIL

2

SCALE: NONE



- NOTES:
1. SIZE HANGER AND CONCRETE INSERT TO ADEQUATELY SUPPORT LOAD (REFER TO B-LINE HANGER CATALOG).
 2. FOR COPPER TUBING USE FELT LINED B3690F OR PLASTIC COATED B3690C HANGERS. INSTALL HANGERS AT 4'-0" O.C. MAXIMUM DESIGN LOAD 100 LBS.

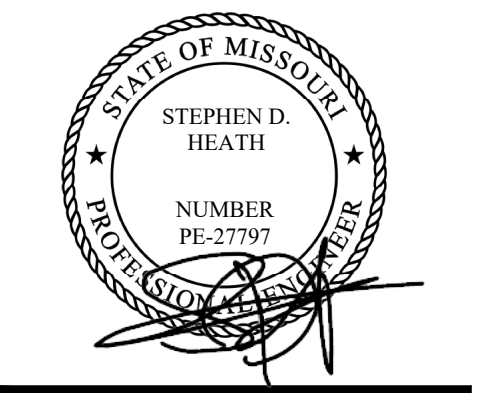
SINGLE PIPE HANGER DETAIL

3

SCALE: NONE



Kinetic Design
20381 Lake Forest Dr. Suite B16
Lake Forest, CA. 92630
Main: 951.710.6334 Web: kineticdesign.build
Email: info@kineticdesign.build



NOT FOR CONSTRUCTION
THIS DRAWING IS PROVIDED FOR INFORMATIONAL PURPOSES ONLY. APPROVAL FROM THE ARCHITECT AND GOVERNING JURISDICTIONS MUST BE OBTAINED PRIOR TO THE ISSUANCE OF CONSTRUCTION DOCUMENTS. THE ARCHITECT AND HIS CONSULTANTS ASSUME NO RESPONSIBILITY FOR CONSTRUCTION BID OR CONSTRUCTION PERFORMED FROM THESE DRAWINGS.

REVISIONS		
No.	DATE	DESCRIPTION

CLIENT INFORMATION



NEKTER - LEE'S SUMMIT, MO
940 NW PRYOR ROAD, RETAIL SPACE 5,
LEE'S SUMMIT, MISSOURI 64081

PROJECT NAME	NEKTER - LEE'S SUMMIT, MO
DRAWN	R.H.
CHECKED	
DATE	07/30/21
SCALE	AS NOTED
PROJECT NUMBER	
SHEET	

P300

THESE DRAWINGS AND THE INFORMATION CONTAINED ON THEM ARE THE SOLE PROPERTY OF KINETIC DESIGN. ANY USE OF THESE DOCUMENTS OR THE INFORMATION CONTAINED HEREIN CAN ONLY BE USED WITH WRITTEN PERMISSION FROM KINETIC DESIGN. KINETIC DESIGN ASSUMES NO LIABILITY FOR THESE DRAWINGS OR INFORMATION CONTAINED HEREIN.

PROJECT NAME
SHEET NAME
PLUMBING DETAILS