
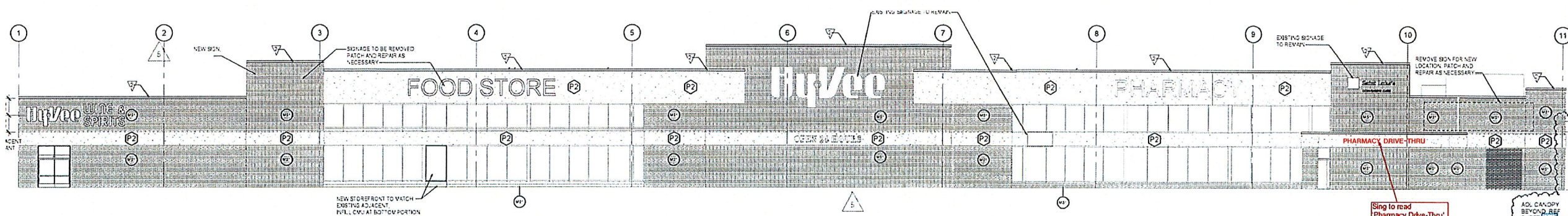


FAB/INSTALL (1) NEW SET OF FACE-LIT CHANNEL LETTERS

BACKS: .063 ALUM.
RETURNS: 3" HY-VEE RED COIL
FACE: 3/16" HY-VEE RED ACRYLIC
TRIM CAP: 1" RED
ILLUMINATION: RED LEDs

- POWER SUPPLY BY OTHERS

ACRYLIC:
 HY-VEE RED ACRYLIC



4 FRONT ELEVATION
 SCALE: 3/32" = 1'-0"

DESIGN #: PG-855 VER.#: 1
 DATE: 7-16-21 DRAWN BY: KSA
 SALES: PHIL GARLAND
 JOB: HY-VEE FOOD #2
 LOCATION: 310 SW WARD RD
 LEE'S SUMMIT, MO 64081
 DESIGN APPROVED BY:

DATE: _____