



RELEASE FOR CONSTRUCTION  
AS NOTED ON PLANS REVIEW  
DEVELOPMENT SERVICES  
LEE'S SUMMIT, MISSOURI  
08/09/2021 11:52:21

MiTek USA, Inc.  
16023 Swingley Ridge Rd  
Chesterfield, MO 63017  
314-434-1200

Re: 2552987  
Summit/19 Woodside

The truss drawing(s) referenced below have been prepared by MiTek USA, Inc. under my direct supervision based on the parameters provided by Builders FirstSource (Valley Center).

Pages or sheets covered by this seal: I47320941 thru I47320941

My license renewal date for the state of Missouri is December 31, 2021.

Missouri COA: Engineering 001193



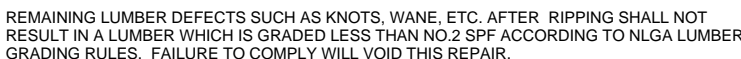
August 5, 2021

Sevier, Scott ,Engineer

**IMPORTANT NOTE:** The seal on these truss component designs is a certification that the engineer named is licensed in the jurisdiction(s) identified and that the designs comply with ANSI/TPI 1. These designs are based upon parameters shown (e.g., loads, supports, dimensions, shapes and design codes), which were given to MiTek or TRENCO. Any project specific information included is for MiTek's or TRENCO's customers file reference purpose only, and was not taken into account in the preparation of these designs. MiTek or TRENCO has not independently verified the applicability of the design parameters or the designs for any particular building. Before use, the building designer should verify applicability of design parameters and properly incorporate these designs into the overall building design per ANSI/TPI 1, Chapter 2.

Builders First Source, Valley Center, KS 67147

8.430 s Nov 18 2020 MiTek Industries, Inc. Thu Aug 5 13:09:26 2021 Page 1



<b>LOADING</b> (psf)	<b>SPACING-</b> 2-0-0	<b>CSI.</b>	<b>DEFL.</b> in (loc)	l/defl	L/d	<b>PLATES</b>	<b>GRIP</b>
TCLL 25.0	Plate Grip DOL 1.15	TC 0.90	Vert(LL) -0.19 21-23	>999	240	MT20	197/144
TCDL 20.0	Lumber DOL 1.15	BC 0.95	Vert(CT) -0.40 19-24	>612	180	MT20HS	148/108
BCLL 0.0 *	Rep Stress Incr NO	WB 0.83	Horz(CT) 0.10 13	n/a	n/a	MT18H	197/144
BCDL 10.0	Code IRC2018/TPI2014	Matrix-MS				Weight: 347 lb	FT = 20%

**REACTIONS.** (size) 27=0-4-0, 9=0-4-0, 13=0-4-0  
 Max Horiz 27=52(LC 12)  
 Max Uplift 27=-376(LC 8), 13=-874(LC 5)  
 Max Grav 27=5192(LC 1), 9=350(LC 22), 13=10258(LC 1)

**FORCES.** (lb) - Max. Comp./Max. Ten. - All forces 250 (lb) or less except when shown.

TOP CHORD	27-28=4822/381, 1-26=12606/1152, 1-2=8842/881, 2-3=4165/449, 3-4=2802/347, 4-5=3100/359, 5-6=262/3932, 6-8=150/1581, 8-31=160/1639
BOT CHORD	26-28=9954/837, 23-26=318/1552, 23-32=361/3578, 32-33=361/3578, 21-33=361/3578, 21-34=141/1014, 20-34=141/1014, 20-35=141/1014, 18-35=141/1014, 17-18=141/1014, 17-36=3526/373, 16-36=3526/373, 15-16=3526/373, 15-37=10420/901, 12-37=10420/901, 12-38=3950/318, 11-38=3950/318, 11-39=1449/170, 10-39=1449/170, 8-10=1517/132, 25-27=76/544, 25-40=849/8878, 24-40=849/8878, 24-41=839/8898, 22-41=839/8898, 22-42=839/8898, 42-43=839/8898, 19-43=839/8898, 19-44=677/7238, 44-45=677/7238, 14-45=677/7238, 14-46=424/4472, 46-47=424/4472, 47-48=424/4472, 13-48=424/4472
WEBS	1-23=162/2704, 1-21=2616/242, 2-21=313/3746, 2-17=5069/559, 3-17=329/3779, 3-15=2809/265, 4-15=181/913, 6-10=31/1117, 11-13=8916/793, 5-11=5777/534, 5-15=507/6665, 14-16=887/160, 19-20=0/383, 6-11=2393/190, 25-26=4773/395, 19-23=1695/165, 25-28=878/10245, 23-25=40/1291, 12-14=269/2956, 12-13=3969/388

**NOTES-**

- 1) 2-ply truss to be connected together with 10d (0.131"x3") nails as follows:  
 Top chords connected as follows: 2x4 - 1 row at 0-4-0 oc.  
 Bottom chords connected as follows: 2x6 - 2 rows staggered at 0-6-0 oc, 2x4 - 1 row at 0-9-0 oc.  
 Webs connected as follows: 2x4 - 1 row at 0-9-0 oc, Except member 26-25 2x4 - 1 row at 0-7-0 oc, 2x6 - 2 rows staggered at 0-7-0 oc.
- 2) All loads are considered equally applied to all plies, except if noted as front (F) or back (B) face in the LOAD CASE(S) section. Ply to ply connections have been provided to distribute only loads noted as (F) or (B), unless otherwise indicated.
- 3) Unbalanced roof live loads have been considered for this design.
- 4) Wind: ASCE 7-16; Vult=115mph (3-second gust) Vasd=91mph; TCDL=6.0psf; BCDL=6.0psf; h=15ft; Cat. II; Exp C; Enclosed; MWFRS (envelope) interior zone; cantilever left and right exposed ; end vertical left and right exposed; Lumber DOL=1.60 plate grip DOL=1.60

5) Provide adequate drainage to prevent water ponding.

 **WARNING - Verify design parameters and READ NOTES ON THIS AND INCLUDED MITEK REFERENCE PAGE MII-7473 rev. 5/19/2020 BEFORE USE.**

**Design valid for use only with MiTEK® connectors.** This design is based only upon parameters shown, and is for individual building component, not a truss system. Before use, the building designer must verify the applicability of design parameters and properly incorporate this design into the overall building design. Bracing indicated is to prevent buckling of individual truss web and/or chord members only. Additional temporary and permanent bracing is always required for stability and to prevent collapse with possible personal injury and property damage. For general guidance regarding the fabrication, storage, delivery, erection and bracing of trusses and truss systems, see **ANSI/TPH Quality Criteria, DSB-89 and BCSI Building Component**

**Safety Information** available from Truss Plate Institute, 2670 Crain Highway, Suite 203 Waldorf, MD 20601

August 5, 2021



16023 Swingley Ridge Rd  
Chesterfield, MO 63017

Job	Truss	Truss Type	Qty	Ply	Summit/19 Woodside	I47320941
2552987	A04	Roof Special Girder	1	2	Job Reference (optional)	

Builders First Source, Valley Center, KS 67147

8.430 s Nov 18 2020 MiTek Industries, Inc. Thu Aug 5 13:09:26 2021 Page 2  
ID:wH4RYhEsTNeUP2dXvOf1syQY8e-uMyr5YzUibg5?RDokHhnexqoPnATLF9W7fQCvLyquid

#### NOTES-

- 6) All plates are MT20 plates unless otherwise indicated.
- 7) This truss has been designed for a 10.0 psf bottom chord live load nonconcurrent with any other live loads.
- 8) \* This truss has been designed for a live load of 20.0psf on the bottom chord in all areas where a rectangle 3-6-0 tall by 2-0-0 wide will fit between the bottom chord and any other members.
- 9) Bearing at joint(s) 27, 9, 13 considers parallel to grain value using ANSI/TPI 1 angle to grain formula. Building designer should verify capacity of bearing surface.
- 10) Provide mechanical connection (by others) of truss to bearing plate capable of withstanding 376 lb uplift at joint 27 and 874 lb uplift at joint 13.
- 11) This truss is designed in accordance with the 2018 International Residential Code sections R502.11.1 and R802.10.2 and referenced standard ANSI/TPI 1.
- 12) Graphical purlin representation does not depict the size or the orientation of the purlin along the top and/or bottom chord. Graphical purlin representation does not depict the size or the orientation of the purlin along the top and/or bottom chord. Graphical purlin representation does not depict the size or the orientation of the purlin along the top and/or bottom chord. Graphical purlin representation does not depict the size or the orientation of the purlin along the top and/or bottom chord.
- 13) Hanger(s) or other connection device(s) shall be provided sufficient to support concentrated load(s) 699 lb down and 68 lb up at 26-0-12 on top chord, and 1099 lb down and 148 lb up at 4-0-12, 1099 lb down and 147 lb up at 6-0-12, 1099 lb down and 145 lb up at 8-0-12, 1099 lb down and 142 lb up at 10-0-12, 1099 lb down and 139 lb up at 12-0-12, 1141 lb down and 138 lb up at 14-0-12, 1141 lb down and 138 lb up at 16-0-12, 1141 lb down and 138 lb up at 18-0-12, 1141 lb down and 138 lb up at 20-0-12, and 665 lb down and 117 lb up at 22-0-12, and 689 lb down and 118 lb up at 24-2-4 on bottom chord. The design/selection of such connection device(s) is the responsibility of others.

#### LOAD CASE(S) Standard

- 1) Dead + Roof Live (balanced): Lumber Increase=1.15, Plate Increase=1.15

##### Uniform Loads (plf)

Vert: 3-26=-90, 3-4=-90, 4-8=-90, 26-28=-160, 10-11=-20, 7-8=-20, 9-10=-111, 25-27=-160, 13-25=-20

##### Concentrated Loads (lb)

Vert: 10=-643(B) 11=-1099(B) 23=-1099(B) 31=-666(B) 32=-1099(B) 33=-1099(B) 34=-1099(B) 35=-1099(B) 36=-1099(B) 37=-1099(B) 38=-1099(B) 39=-665(B)

#### WARNING - Verify design parameters and READ NOTES ON THIS AND INCLUDED MITEK REFERENCE PAGE MII-7473 rev. 5/19/2020 BEFORE USE.

Design valid for use only with MiTek® connectors. This design is based only upon parameters shown, and is for an individual building component, not a truss system. Before use, the building designer must verify the applicability of design parameters and properly incorporate this design into the overall building design. Bracing indicated is to prevent buckling of individual truss web and/or chord members only. Additional temporary and permanent bracing is always required for stability and to prevent collapse with possible personal injury and property damage. For general guidance regarding the fabrication, storage, delivery, erection and bracing of trusses and truss systems, see

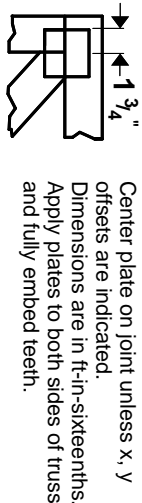
**Safety Information** available from Truss Plate Institute, 2670 Crain Highway, Suite 203 Waldorf, MD 20601  
**ANSI/TPI1 Quality Criteria, DSB-89 and BCSI Building Component**



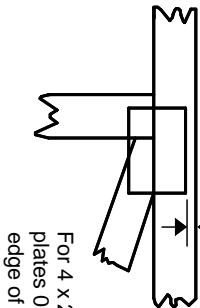
16023 Swingley Ridge Rd  
Chesterfield, MO 63017

# Symbols

## PLATE LOCATION AND ORIENTATION



0-<sup>1</sup>/<sub>16</sub>"



For 4 x 2 orientation, locate plates 0- <sup>1</sup>/<sub>16</sub>" from outside edge of truss.

—  
—  
This symbol indicates the required direction of slots in connector plates.

\* Plate location details available in **MiTek 20/20** software or upon request.

## PLATE SIZE

4 X 4

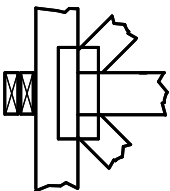
The first dimension is the plate width measured perpendicular to slots. Second dimension is the length parallel to slots.

## LATERAL BRACING LOCATION



Indicated by symbol shown and/or by text in the bracing section of the output. Use T or I bracing if indicated.

## BEARING



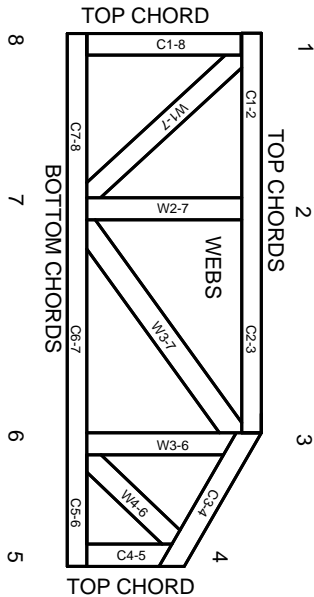
Indicates location where bearings (supports) occur. Icons vary but reaction section indicates joint number where bearings occur. Min size shown is for crushing only.

## Industry Standards:

ANSI/TP1: National Design Specification for Metal Plate Connected Wood Truss Construction.  
DSB-89: Building Component Safety Information, Guide to Good Practice for Handling, Installing & Bracing of Metal Plate Connected Wood Trusses.

# Numbering System

6-4-8 dimensions shown in ft-in-sixteenths (Drawings not to scale)



JOINTS ARE GENERALLY NUMBERED/LETTERED CLOCKWISE AROUND THE TRUSS STARTING AT THE JOINT FARTHEST TO THE LEFT.

CHORDS AND WEBS ARE IDENTIFIED BY END JOINT NUMBERS/LETTERS.

## PRODUCT CODE APPROVALS

ICC-ES Reports:

ESR-1311, ESR-1352, ESR1988  
ER-3907, ESR-2362, ESR-1397, ESR-3282

Trusses are designed for wind loads in the plane of the truss unless otherwise shown.

Lumber design values are in accordance with ANSI/TP1 1 section 6.3 These truss designs rely on lumber values established by others.

© 2012 MiTek® All Rights Reserved



MiTek Engineering Reference Sheet: MII-7473 rev. 5/19/2020



# General Safety Notes

Failure to Follow Could Cause Property Damage or Personal Injury

1. Additional stability bracing for truss system, e.g. diagonal or X-bracing, is always required. See BCSI.
2. Truss bracing must be designed by an engineer. For wide truss spacing, individual lateral braces themselves may require bracing, or alternative Tor I bracing should be considered.
3. Never exceed the design loading shown and never stack materials on inadequately braced trusses.
4. Provide copies of this truss design to the building designer, erection supervisor, property owner and all other interested parties.
5. Cut members to bear tightly against each other.
6. Place plates on each face of truss at each joint and embed fully. Knots and wane at joint locations are regulated by ANSI/TP1 1.
7. Design assumes trusses will be suitably protected from the environment in accord with ANSI/TP1 1.
8. Unless otherwise noted, moisture content of lumber shall not exceed 19% at time of fabrication.
9. Unless expressly noted, this design is not applicable for use with fire retardant, preservative treated, or green lumber.
10. Camber is a non-structural consideration and is the responsibility of truss fabricator. General practice is to camber for dead load deflection.
11. Plate type, size, orientation and location dimensions indicated are minimum plating requirements.
12. Lumber used shall be of the species and size, and in all respects, equal to or better than that specified.
13. Top chords must be sheathed or purlins provided at spacing indicated on design.
14. Bottom chords require lateral bracing at 10 ft. spacing, or less, if no ceiling is installed, unless otherwise noted.
15. Connections not shown are the responsibility of others.
16. Do not cut or alter truss member or plate without prior approval of an engineer.
17. Install and load vertically unless indicated otherwise.
18. Use of green or treated lumber may pose unacceptable environmental, health or performance risks. Consult with project engineer before use.
19. Review all portions of this design (front, back, words and pictures) before use. Reviewing pictures alone is not sufficient.
20. Design assumes manufacture in accordance with ANSI/TP1 1 Quality Criteria.
21. The design does not take into account any dynamic or other loads other than those expressly stated.