

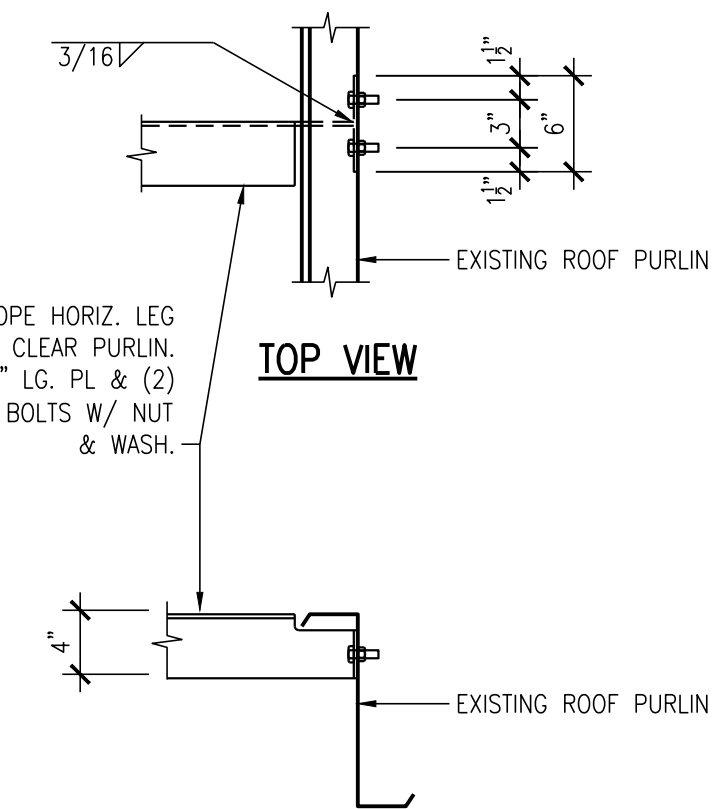
**STRUCTURAL  
ENGINEERING  
ASSOCIATES**  
Phone: 816/421-1042

Missouri Certificate of Authority: 000396

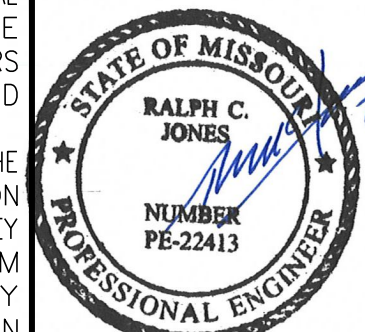
LEE'S SUMMIT, MO. 64082

REVISIONS:

©2021 STRUCTURAL ENGINEERING ASSOCIATES, INC.



THE ACCOMPANYING PROFESSIONAL SEAL INDICATES THAT THE PERSON WHOSE NAME APPEARS ON THE SEAL HAS PREPARED OR SUPERVISED PREPARATION OF THE DOCUMENT ON WHICH THE SEAL APPEARS. THAT PERSON AND THE FIRM FOR WHICH THEY ARE EMPLOYED DISCLAIM RESPONSIBILITY FOR ANY PORTIONS OF THE WORK ON WHICH THEIR SEAL DOES NOT APPEAR.



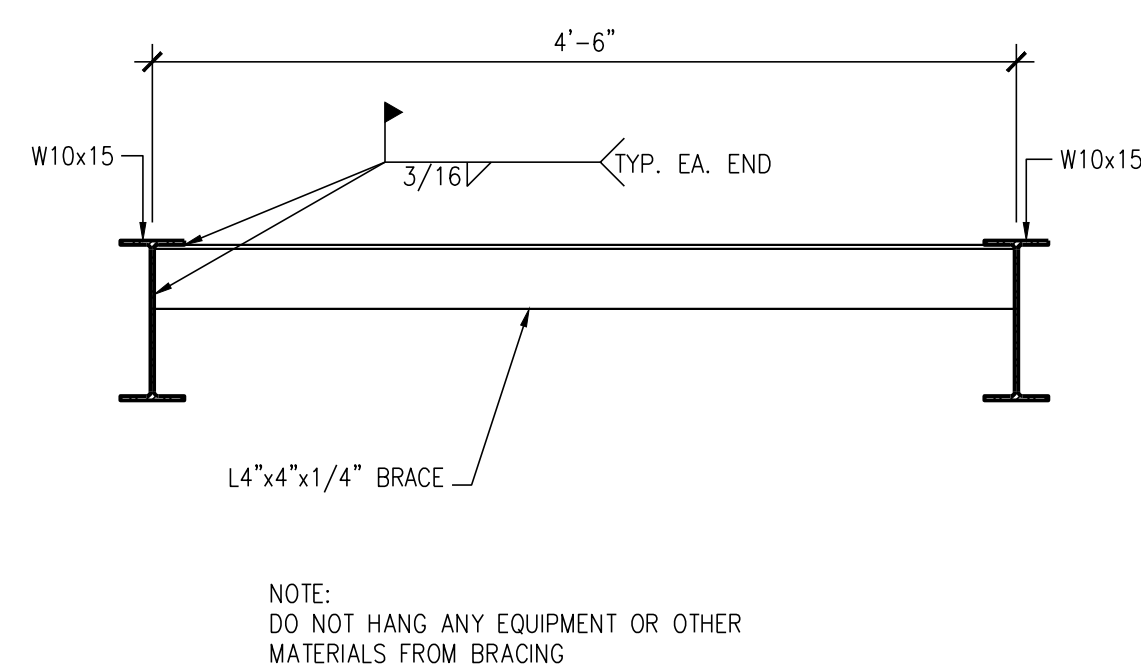
RALPH C JONES  
MO PE-22413

**STRUCTURAL  
ENGINEERING  
ASSOCIATES**  
Phone: 816/421-1042

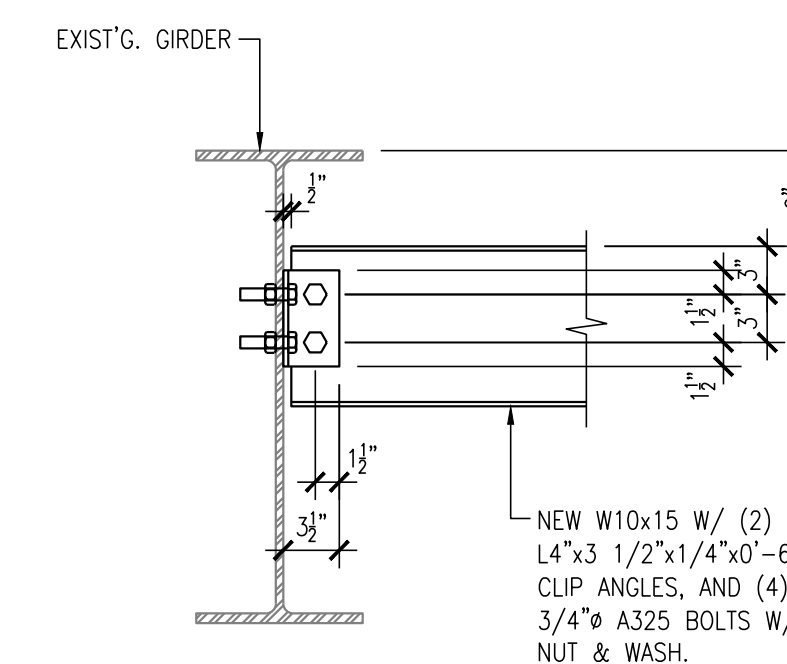
# W

Kansas City, MO 64106  
Missouri Certificate of Authority: 000396

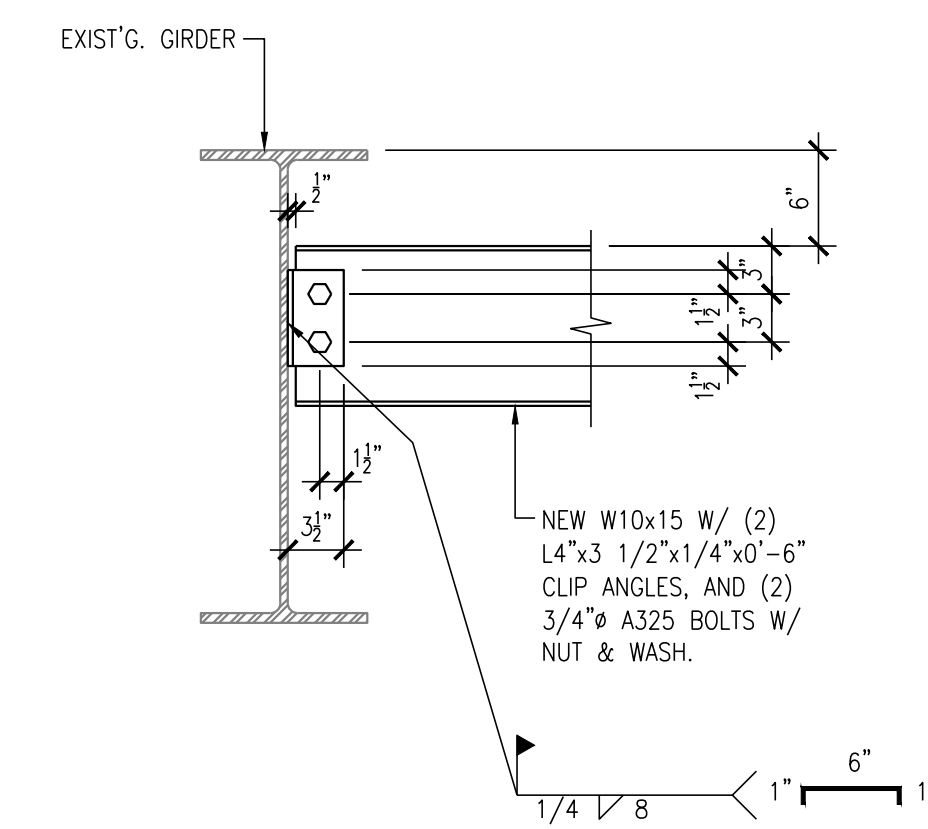
## 2 ROOF PENETRATION



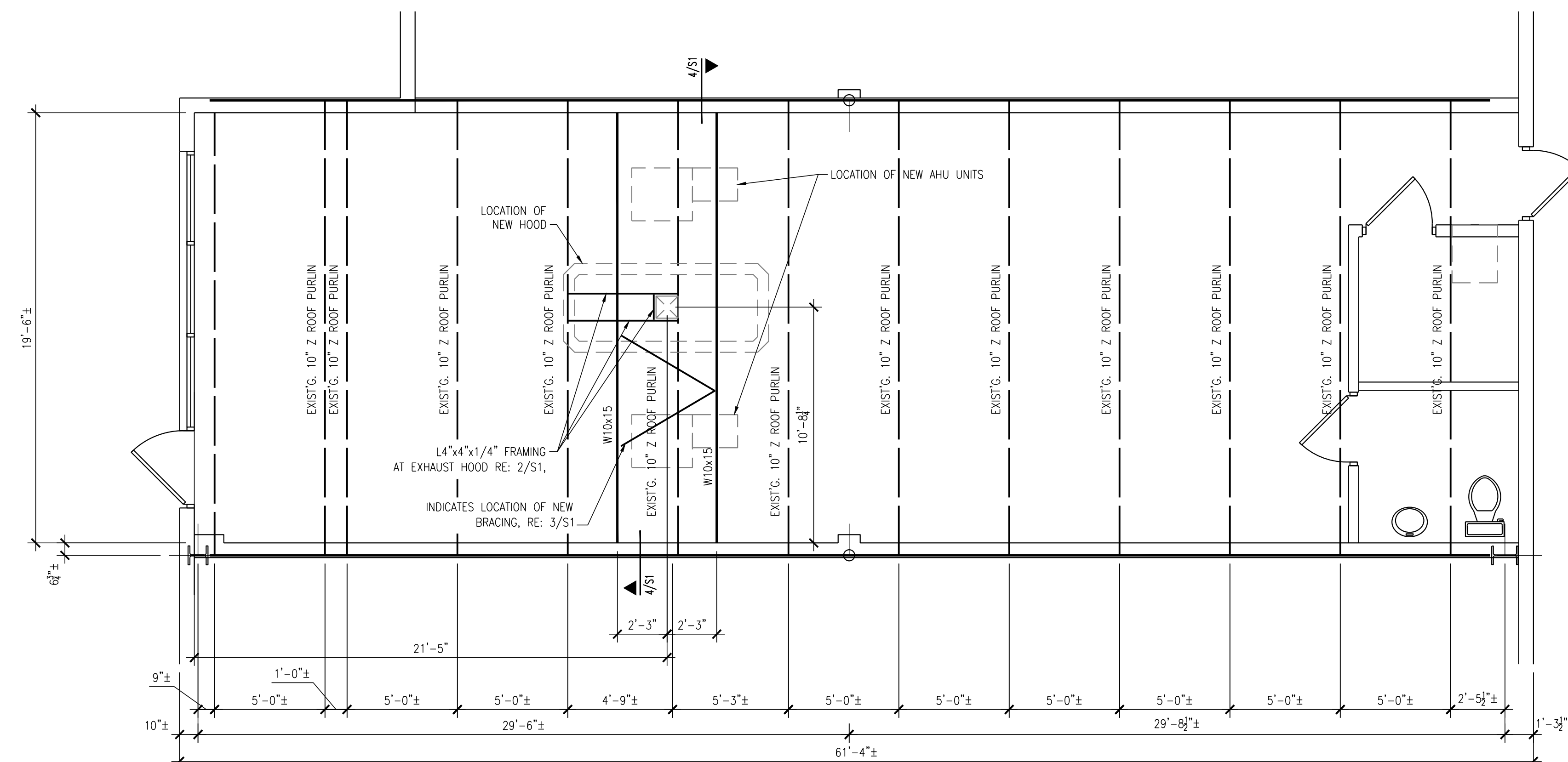
### 3 BRACING CONNECTION TO FLANGE OF BEAM



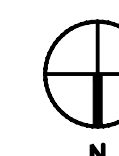
#### 4 NEW BEAM TO EXISTING GIRDER CONNECTION



#### 4 OPTIONAL BEAM TO GIRDER CONNECTION



# 1 AIR HANDLING UNIT PLAN



©2021 STRUCTURAL ENGINEERING ASSOCIATES, INC.

DOMINO'S PIZZA BAKERY STORE  
NEW AIR HANDLING UNITS  
3544 MARKET ST.  
LEE'S SUMMIT, MO. 64082

DRAWN BY  
LGC

CHECKED BY  
RCJ

JOB NO.  
2021034

DATE  
07/09/202

REVISIONS:

S1