

July 8, 2021

Summit Homes
 120 SE 30th St.
 Lee's Summit, MO 64082

RE: Deck post connection for Lot #5 Woodside Ridge – 106 NW Grady Ct. Lee's Summit, MO 64081 – Permit # PRRES20204439

This letter addresses the deck beam connection for Lot # 5 Woodside Ridge.

- Install (1) 16-ga. ST12 Simpson galvanized straps per post per manufacturer's specifications on both posts for deck and patio covering.
- Install with (10) .162 x 2-1/2 nails or approved Simpson SD screws per manufacturer's specs.
- Straps shall be centered over post cut.

(2) #2 2x12 Deck beam:

- Shall be attached with (2) through bolts per IRC Figure R507.5.1 (2).

(2) #2 2x10 Double Joist at Deck Ends:

- Shall be attached with (2) 1/4" x 5" lag screws per connection.

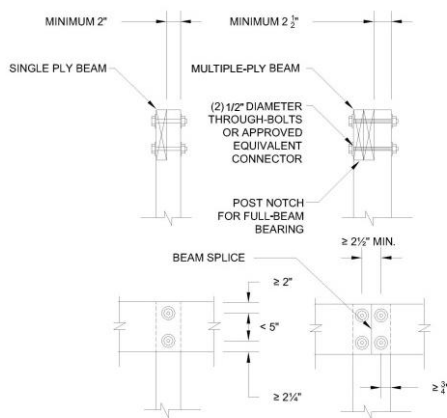


FIGURE R507.5.1(2) NOTCHED POST-TO-BEAM CONNECTION

Many of these products are approved for installation with Strong-Drive® SD Connector screws.

Model No.	Ga.	Dimensions (in.)		Fasteners (Total) (in.)	Allowable Tension Loads (DF/SP)	Allowable Tension Loads (SPF/HF)
		W	L		(160)	(160)
ST2115	20	¾	16⅞	(10) 0.162 x 2½	660	660
ST9	16	1¼	9	(8) 0.162 x 2½	885	765
ST12		1¼	11⅞	(10) 0.162 x 2½	1,105	955
ST18		1¼	17⅞	(14) 0.162 x 2½	1,420	1,335
ST22		1¼	21⅞	(18) 0.162 x 2½	1,420	1,420
ST292	20	2⅞	9⅞	(12) 0.162 x 2½	1,260	1,120
ST2122		2⅞	12⅞	(16) 0.162 x 2½	1,530	1,510
ST2215		2⅞	16⅞	(20) 0.162 x 2½	1,875	1,875
ST6215		2⅞	16⅞	(20) 0.162 x 2½	2,090	1,910
ST6224	16	2⅞	23⅞	(28) 0.162 x 2½	2,535	2,535
ST6236	14	2⅞	33⅞	(40) 0.162 x 2½	3,845	3,845

1. See [General Notes for Straps and Ties](#).

2. Fasteners: Nail dimensions in the table are listed diameter by length. For additional information, see [Fastener Types and Sizes Specified for Simpson Strong-Tie Connectors](#).

Sincerely,



Bradley Huxol, PE

