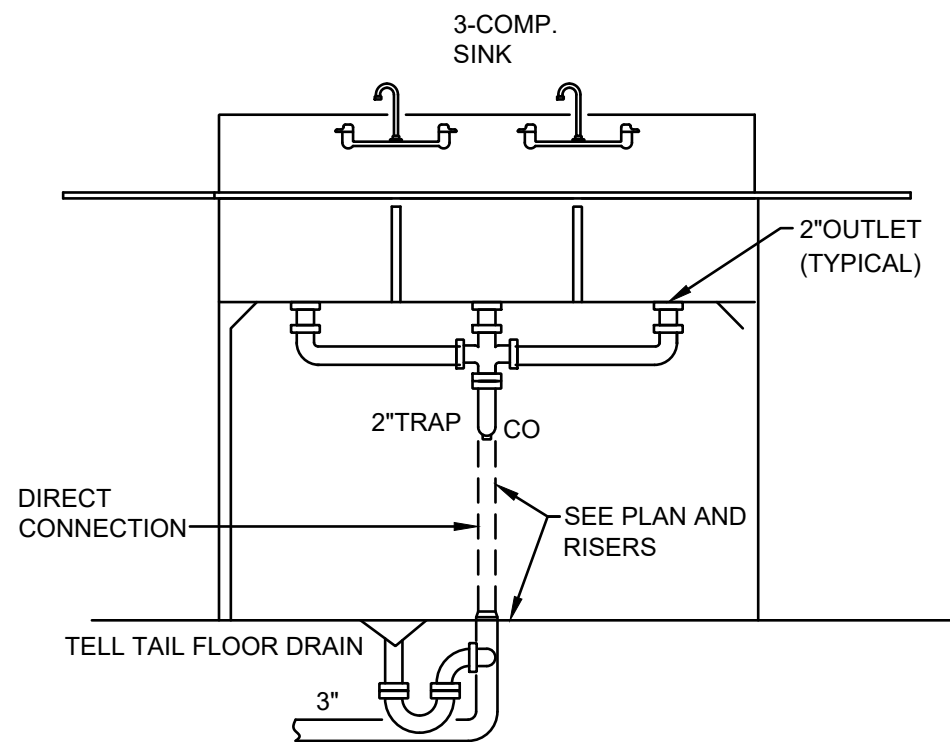
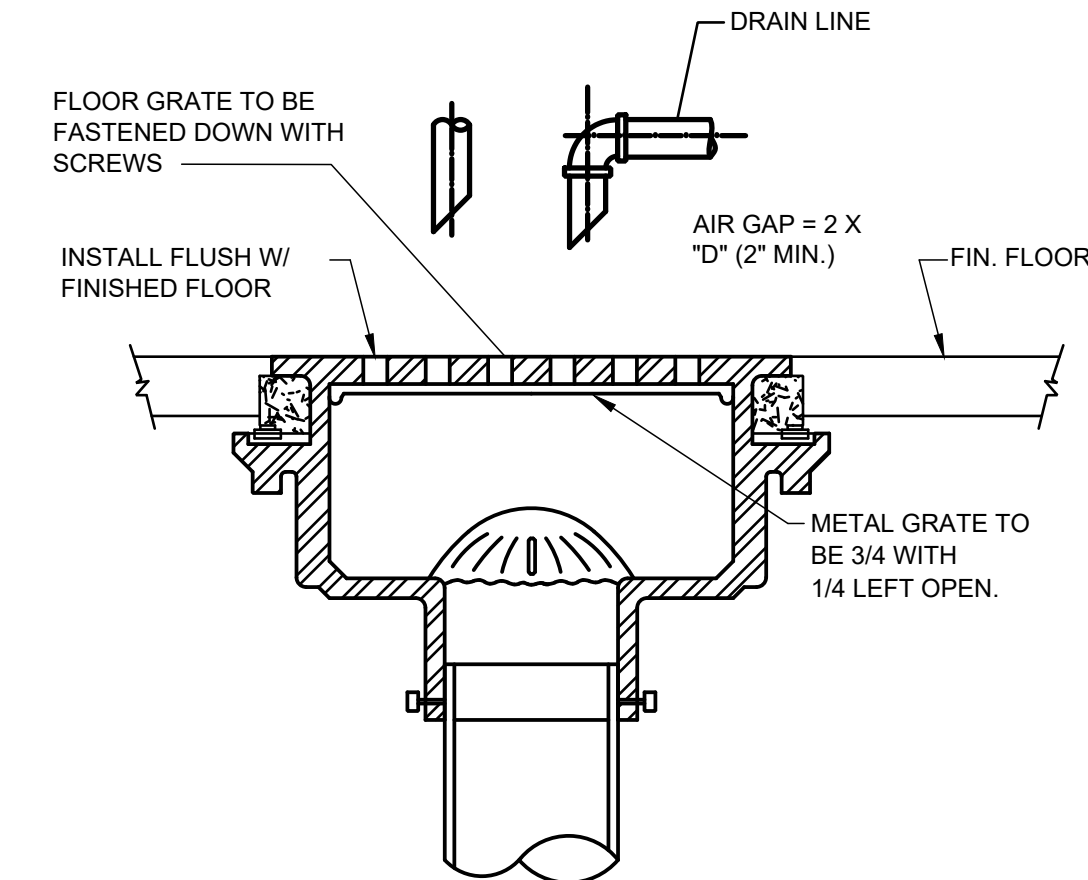


IN-FLOOR PLUMBING PLAN  
SCALE: 1/4" = 1'-0"



3-COMPARTMENT SINK DETAIL  
SCALE: NO SCALE



NOTE:  
1. ALL FLOOR SINKS MUST BE FLUSH WITH TILE FLOOR AS SHOWN ABOVE. INSTALLATION ON A 1/4" LIP EITHER DIRECTION IS ALSO ACCEPTABLE.

SANITARY FLOOR SINK DETAIL  
SCALE: NO SCALE

NOTE:  
VENTING ABOVE RIM HEIGHT, 6" MINIMUM

CONDENSATE OR SIMILAR LIQUID WASTES SHALL BE DRAINED INDIRECTLY TO A FLOOR SINK WITH A MINIMUM 1 INCH AIR GAP FROM THE LIP OF THE BASIN.

NOTE:  
THE LOCATION OF THE GREASE TRAP AS SHOWN IS FOR COORDINATION PURPOSES ONLY. THE CONTRACTOR SHALL FIELD VERIFY ALL SITE CONDITIONS DURING THE BIDDING PHASE OF THIS PROJECT AND ASSIGN ALL APPLICABLE COST. WHEN NOT INDICATED, VERIFY WITH LOCALITY IF ADDITIONAL SAMPLING PORT OR SAMPLE TEE IS REQUIREMENT.

PLUMBING SYMBOLS			
(E) SAN	EXISTING SANITARY SEWER LINE	F.D.	FLOOR DRAIN
SAN	SANITARY SEWER LINE	TPRV	TEMPERATURE PRESSURE RELIEF VALVE
GW	GREASE WASTE LINE	P.O.C.	POINT OF CONNECTION
V	VENT LINE	FS	FLOOR SINK
CD	CONDENSATE DRAIN	C.W.	CAN WASH
---	COLD WATER LINE	MS	MOP SINK
---	HOT WATER LINE	LAV.	LAVATORY
---	HOT WATER RETURN	UR.	URINAL
---	FILTERED WATER LINE	W.C.	WATER CLOSET
---	SHUT-OFF VALVE	A.F.F.	ABOVE FINISHED FLOOR
---	BACKFLOW PREVENTER	B.F.F.	BELOW FINISHED FLOOR
VTR	VENT THRU ROOF	WM	WATER METER
CI	CAST IRON	EW	ELECTRIC WATER HEATER
FCO	FLOOR CLEAN OUT	GCO	GRADE CLEANOUT
WCO	WALL CLEAN OUT	TWCO	TWO WAY CLEANOUT

NOTE: 1. REFER TO RISER DIAGRAM ON SHEET P3 FOR PIPE SIZES.  
2. REFER TO PLUMBING FIXTURE SCHEDULE ON SHEET P5 FOR KEYED NOTES

TABLE TO CALCULATE DRAINAGE FIXTURES

PLUMBING FIXTURE	DRAINAGE FIXTURE UNITS	NUMBER OF FIXTURES	DFUS
WATER CLOSET (WC-1)	4	2	8
LAVATORIES (LAV-1)	1	2	2
FLOOR DRAINS (FD-1)	3	4	12
FLOOR SINK (FS-1)	5	4	20
TRENCH DRAIN (TD-1)	4	1	4
3 COMPARTMENT SINK	4	1	4
URINAL (UR-1)	2	1	2
HAND SINK (HS-1)	3	2	6
MOP SINK	3	1	3
TOTAL DRAINAGE FIXTURE UNITS			61

PLUMBING KEYED NOTES

- EXISTING SANITARY WASTE PIPING BELOW GRADE. VERIFY EXACT SIZE, INVERT ELEVATION, AND LOCATION IN FIELD PRIOR TO WORK.
- POINT OF CONNECTION TO EXISTING SANITARY PIPING BELOW GRADE. VERIFY EXACT SIZE, INVERT ELEVATION AND LOCATION IN FIELD PRIOR TO WORK. CONTACT ENGINEER WITH ANY DISCREPANCIES.
- ROUTE (2) 1-1/2" DRAINS AND (1) 1-1/4" DRAIN FROM ICE MACHINE TO FLOOR SINK. REFER TO ITEM 19 ON SCHEDULE SHEET P5. (NO TEE IN LINES.) DRAIN FROM ICE MACHINE AND ICE BIN MUST BE SEPARATELY ROUTED TO INDIRECTLY DISCHARGE TO FLOOR SINK.
- FLOOR SINK. REFER TO ITEM 6 ON SCHEDULE SHEET P5 AND RISER DIAGRAM ON SHEET P3 FOR ADDITIONAL INFORMATION.
- ROUTE TO GREASE INTERCEPTOR. COORDINATE WITH LANDLORD AND LOCAL AUTHORITIES FOR EXACT LOCATION. VERIFY WITH LOCAL AUTHORITIES ON EXACT TYPE, SIZE AND INSTALLATION OF GREASE INTERCEPTOR. REFER TO GREASE INTERCEPTOR DETAIL P4.
- SELF-EVAPORATING CONDENSATE AT COOLER AND FREEZER. DRAIN NOT REQUIRED BY MANUFACTURER.
- FLOOR DRAIN WITH SURE SEAL TRAP GUARD. ALTERNATE: PROVIDE 1/2" TRAP PRIMER LINE WHEN TRAP GUARD IS NOT ACCEPTED BY LOCAL CODE. REFER TO ITEM 4 AND 5 ON SCHEDULE SHEET P5 AND WATER SUPPLY PLAN P2 FOR TRAP PRIMER LOCATION. VERIFY PRIOR TO BID.
- (NOT SHOWN): 3/4" DRAIN FROM SODA SYSTEM, DRAIN INDIRECTLY INTO FLOOR SINK, MOUNT UNDER COUNTER. REFER TO ITEM 20 ON SCHEDULE SHEET P5 FOR ADDITIONAL INFORMATION.
- DRAIN CARBONATOR INDIRECTLY TO FLOOR SINK. REFER TO ITEM 24 ON SCHEDULE SHEET P5.
- VENT PIPING BELOW GRADE.