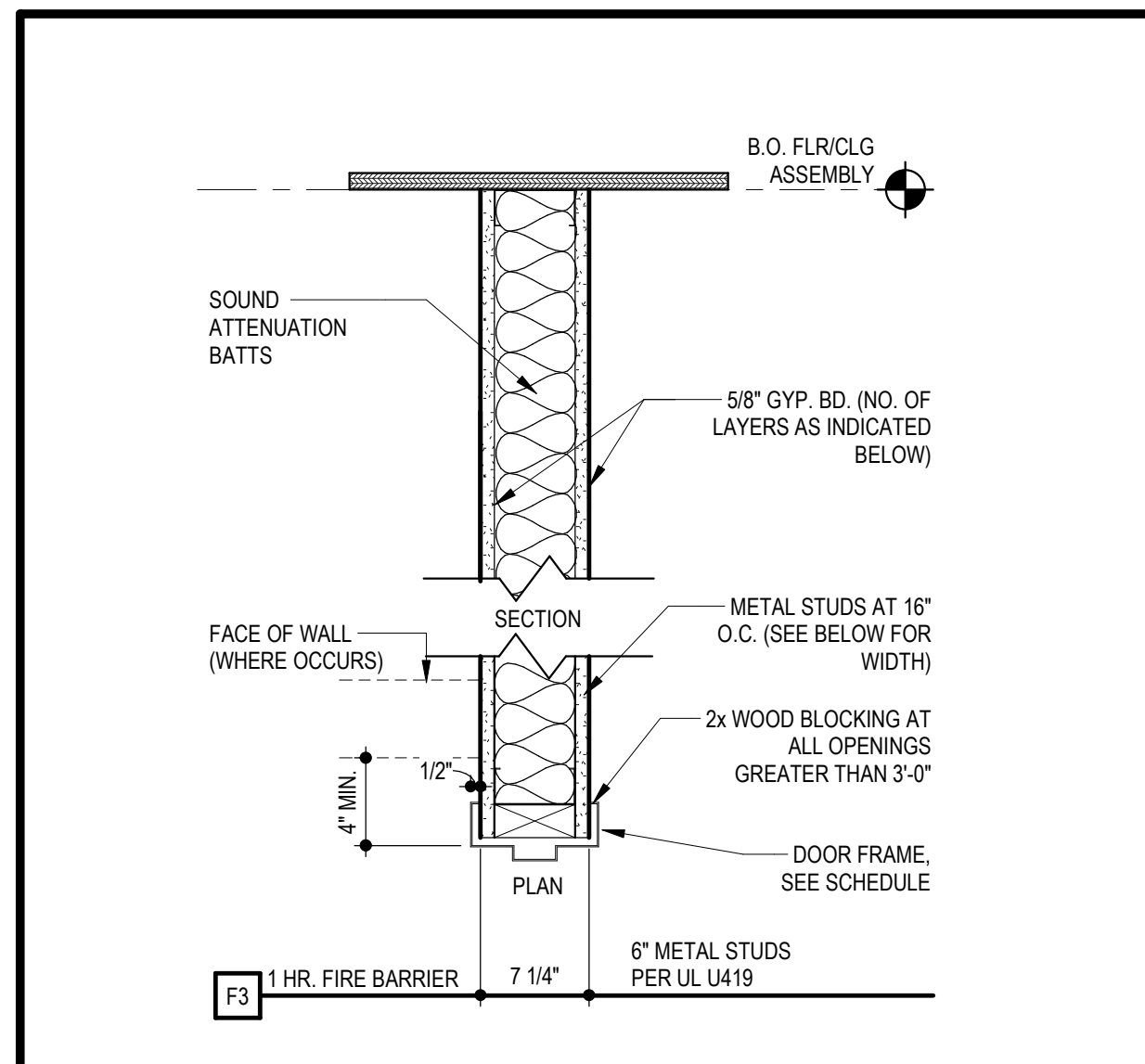
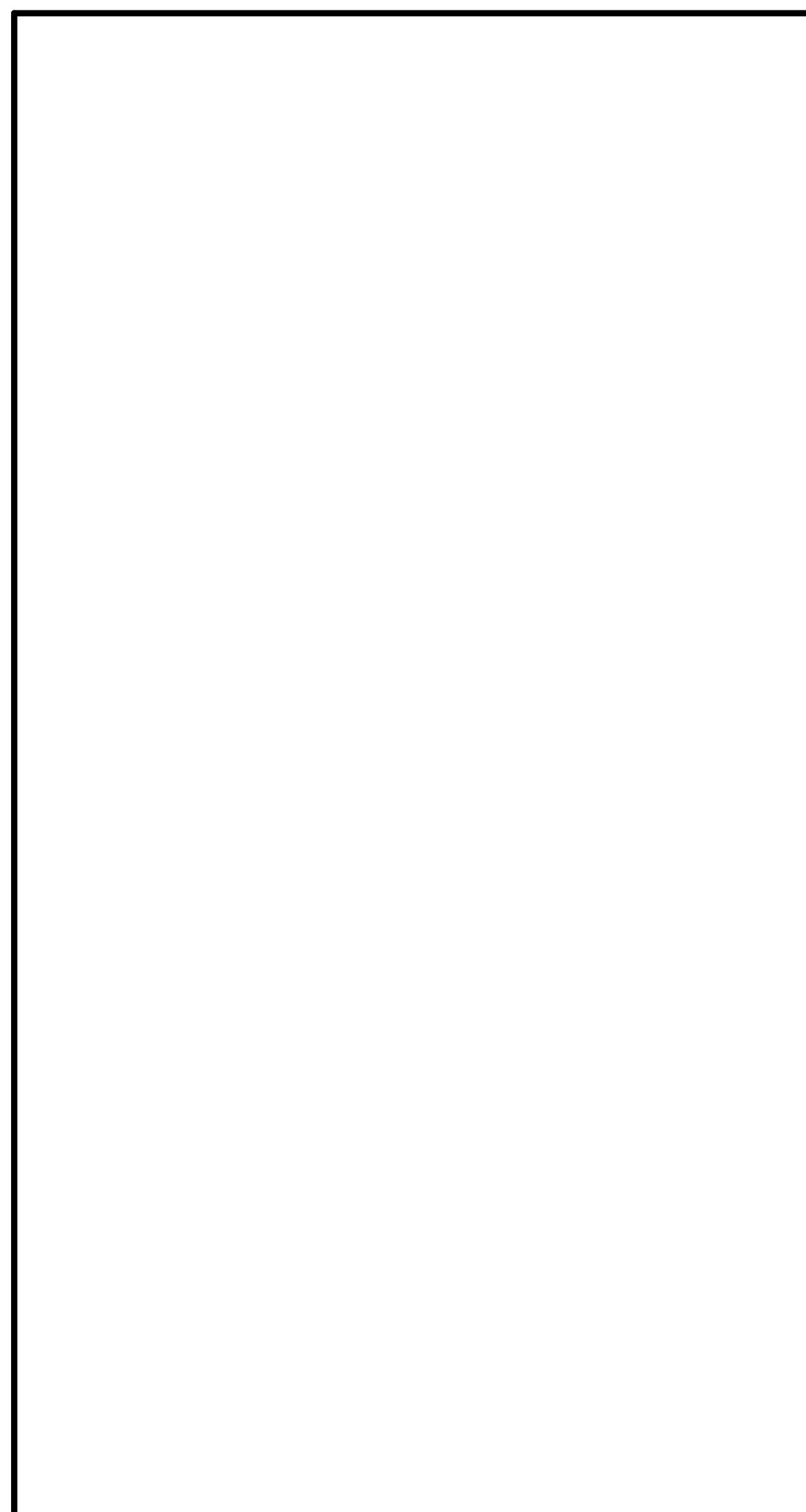
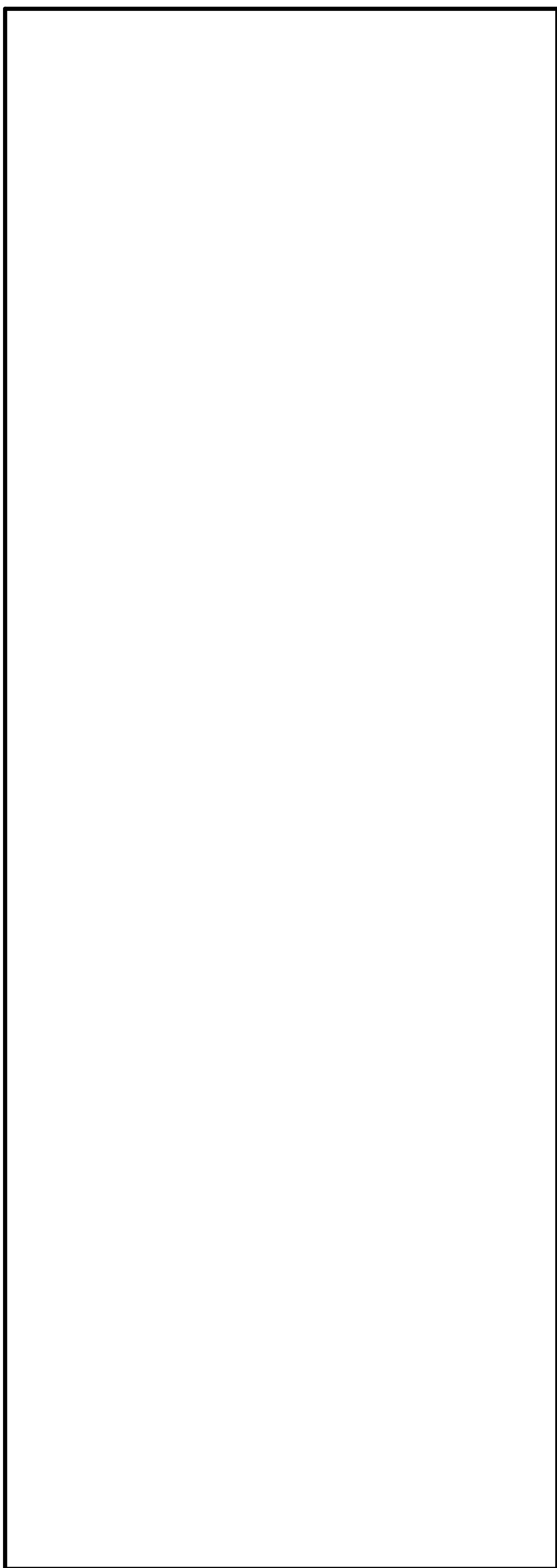


**1 FIRST FLOOR PLAN**  
SCALE: 1/16" = 1'-0"



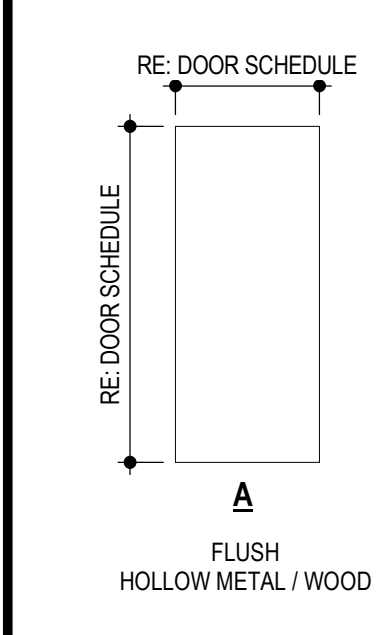
**4 PARTITION TYPE**  
SCALE: 1/12" = 1'-0"



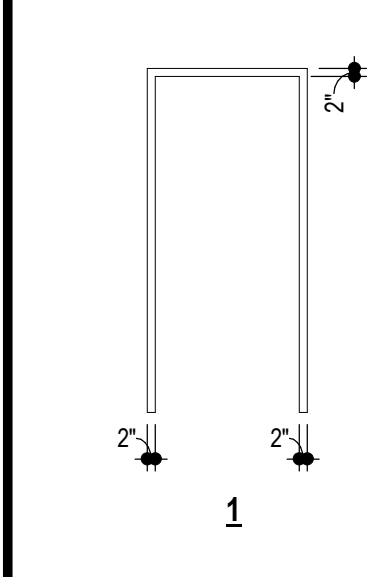
**DOOR SCHEDULE FIRST FLOOR RETAIL REWORK**

DOORS						FRAMES							
NO.	TYPE	MATL.	WIDTH	HEIGHT	HRDWRE SET	LABEL	REMARKS	TYPE	MATL.	HEAD	JAMBS	SILL	LABEL
180B	A	WD	3'-0"	7'-0"	E3	45 MIN	-	1	HM	16/A500	16/A500	-	45 MIN
181B	A	WD	3'-0"	7'-0"	E3	45 MIN	-	1	HM	16/A500	16/A500	-	45 MIN

**DOOR TYPE**

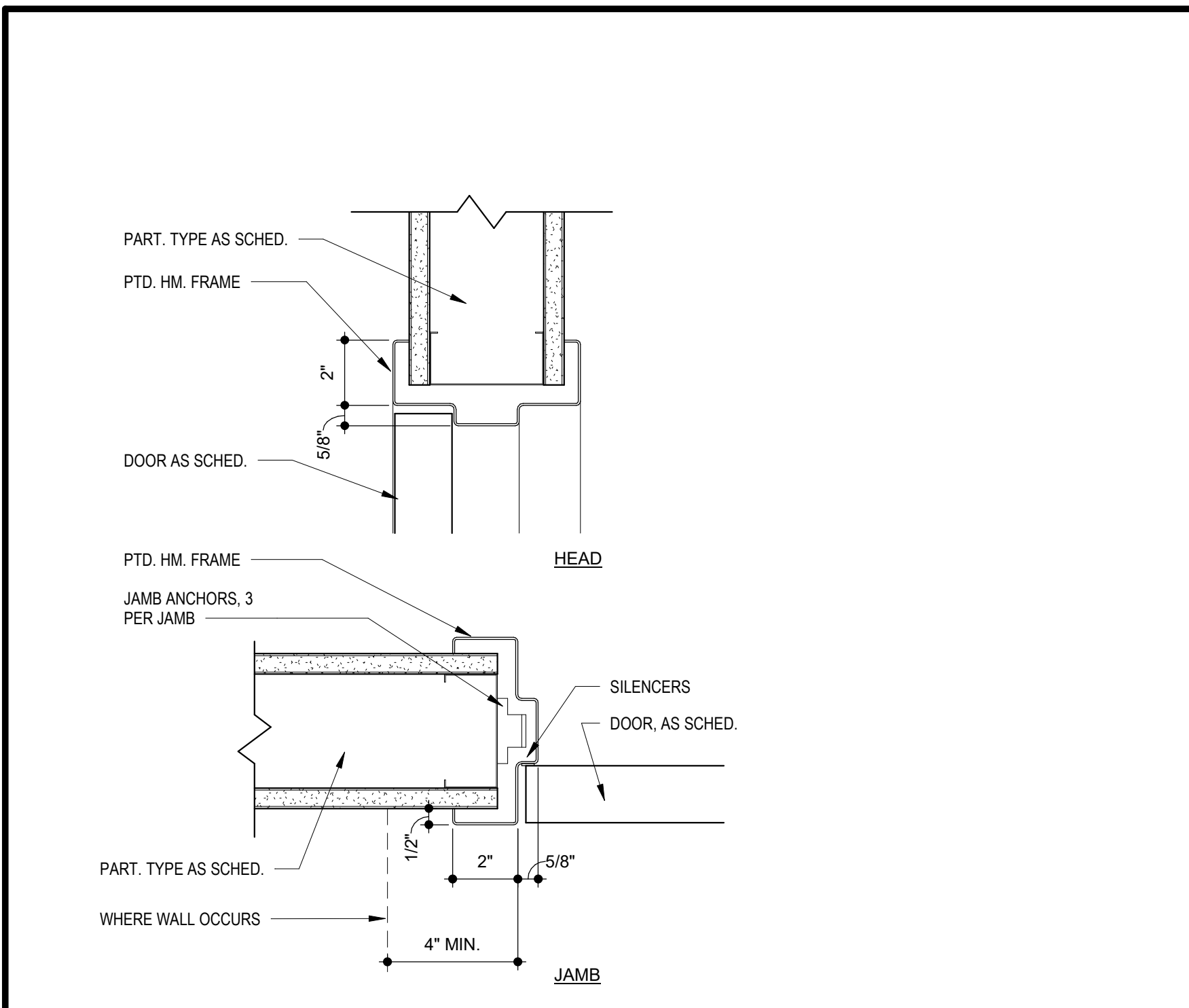


**DOOR FRAME TYPE**



- KEYED NOTES** ◆
- DEMO DEMISING WALL TO COMBINE RETAIL SPACES
  - DEMO PORTION OF CORRIDOR WALL FOR NEW BACK OF HOUSE EXIT FROM RETAIL SPACE
  - NEW WALL TO DIVIDE RETAIL SPACES
  - STOREFRONT SYSTEM AND GLAZING TO MATCH EXISTING SYSTEM.  
GLASS TYPES: TYPE 1 - 1/4" Clear Solarban 60 (2) - 1/2" Black AS - 1/4" Clear ANWANN  
TYPE 2 - 1/4" Clear Solarban 60 (2) - 1/2" Black AS - 1/4" Clear TE/TE  
STOREFRONT: Manko 2450FS BLACK ANODIZED STOREFRONT  
STOREFRONT DOORS: Manko Series 1351 STOREFRONT DOOR

- GENERAL NOTES**
- THE ARCHITECT ASSUMES THE GENERAL CONTRACTOR HAS INCLUDED IN HIS BID THE HIGHEST QUALITY AND GREATEST QUANTITY FOR THE PURPOSE OF RESOLVING ANY CONFLICTS IN THE CONSTRUCTION DOCUMENTS WHICH ARE IMPLIED OR UNDEFINED.
  - FIRE RETARDANT TREATED WOOD PERMITTED TO BE USED IN LOCATIONS SPECIFIED IN TABLE 602, NOTE D AND SECTION 603.2 AND 2310.0. VERIFY SECTIONS IN 2009 IBC.
  - FOR RETAIL SHOPS, COORDINATE WITH G.C. AND OWNER FOR FINAL TENANT DOOR QUANTITIES AND LOCATIONS.
  - ALL DIMENSIONS ARE TO FINISH FACE OF WALL



**16 DOOR HEAD / JAMB DETAIL**  
SCALE: 3" = 1'-0"

**TRI ARCHITECTS**  
ARCHITECT  
BOB D CAMPBELL & COMPANY  
RENAISSANCE INFRASTRUCTURE CONSULTING  
BRINKMANN CONSTRUCTORS  
LATIMER SOMMERS & ASSOCIATES  
LATIMER SOMMERS & ASSOCIATES

**PEARL COMPANIES**  
ARCHITECT  
STRUCTURAL ENGINEER  
CIVIL ENGINEER  
GENERAL CONTRACTOR  
MECHANICAL ENGINEER  
PLUMBING ENGINEER  
ELECTRICAL ENGINEER

**Summit at West Pryor**  
940 NW Pryor Road  
Lee's Summit, Missouri 64081

**TRI ARCHITECTS**  
1750 Brentwood Blvd  
St. Louis, Missouri 63144  
© Copyright 2018  
www.triarchitects.com  
T: 314-395-9750

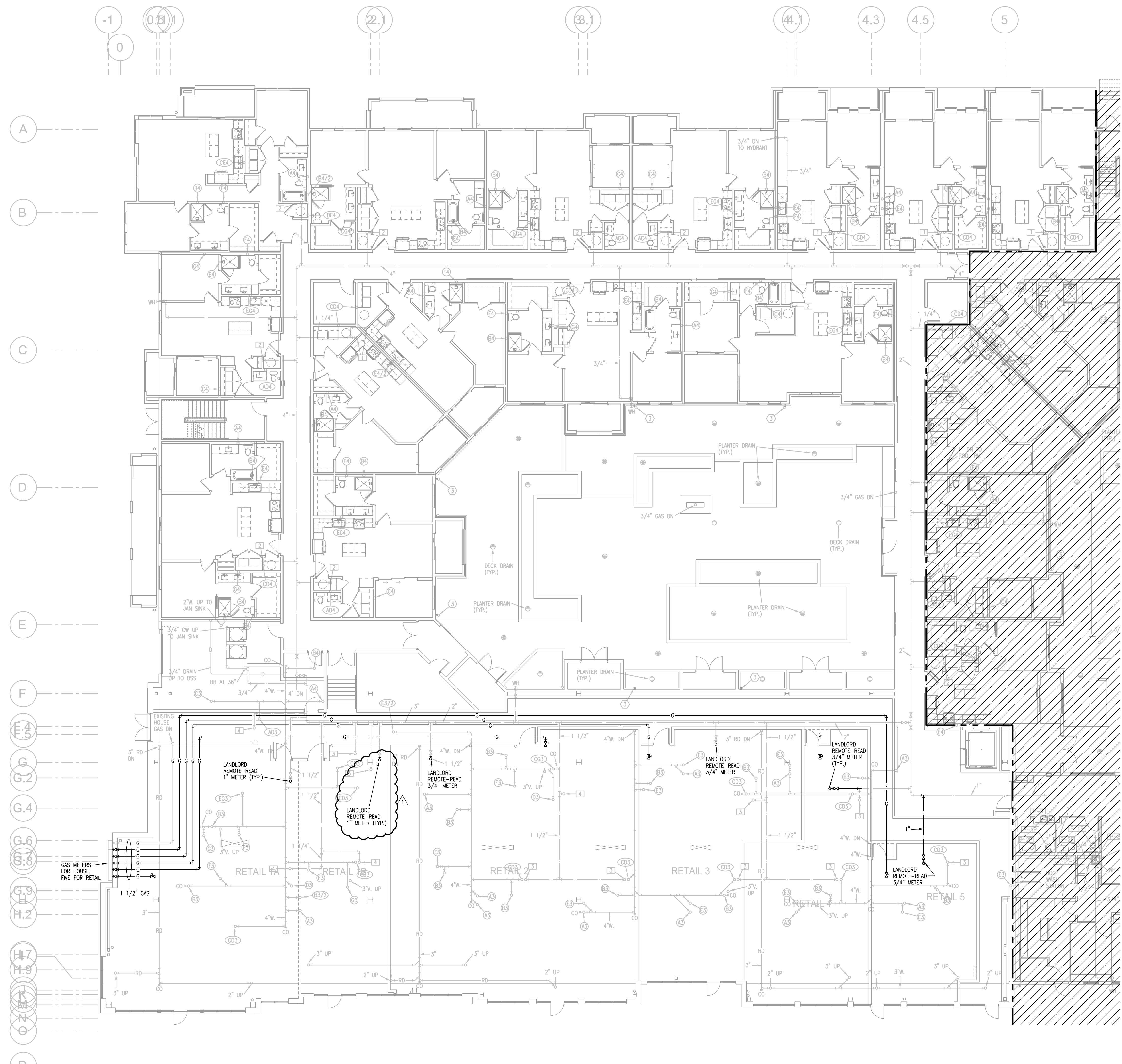
**DATE:** 5.21.21

**REVISIONS**

NO.	DESCRIPTION	DATE
1	ASI 1	Date 14

**DWG BY:** MKSS  
**TR.I PROJECT NO.:** 18-046  
**SHEET NO.:** A500  
**RETAIL TENANT REWORK**





- NOTES:
1. ALL DRAIN, WASTE AND VENT PIPING IS 2" UNLESS NOTED OTHERWISE.
  2. ALL BELOW SLAB SUPPLY PIPING SHALL BE PEX WITH NO JOINTS. DHW BELOW SLAB TO BE INSULATED TO R-3.
  3. DHW PIPING 3/4" AND LARGER TO BE INSULATED TO R-3 MINIMUM.
  4. ALL SUPPLY PIPING IS 1/2" UNLESS NOTED OTHERWISE.
  5. CONNECT ALL APPLIANCES OR EQUIPMENT PER MANUFACTURERS INSTRUCTIONS.
  6. ALL PLUMBING VENTS SHALL BE 10 FEET FROM OPENINGS OR INTAKE.
  7. THERE SHALL BE NO PVC WITHIN RETURN AIR PLENUMS.
  8. ALL FIXTURES WITH QUICK CLOSING VALVES SHALL HAVE FIXTURE OR BLADDER TYPE SHOCK SUPPRESSORS FOR EACH CHASE.
  9. SEE ARCHITECTURAL DRAWINGS FOR ALL MOUNTING HEIGHTS.
  10. REFER TO THE ARCHITECTURAL DRAWINGS FOR FLOOR DRAIN LOCATIONS AND FLOOR SLOPES IF PRESENT.
  11. ROUTE DRAIN PIPING FROM WATER HEATERS, AIR HANDLERS OR EQUIPMENT TO FLOOR DRAINS. PROVIDE PROPER TRAPS.
  12. ROUTE NO PIPING OVER ELECTRICAL EQUIPMENT.
  13. ALL WASTE AND ROOF DRAIN STACKS SHALL HAVE CLEANOUTS AT THE BASE.

- LEGEND:
- ① 3"V. UP TO RISER FOR FUTURE CONNECTION.
  - ② 6" UP TO DOWNSPOUT CONNECTION.
  - ③ DOWNSPOUT CONNECTION. 6" DOWN TO GARAGE.
  - ④ PENETRATE BEAM PER STRUCTURAL DETAIL.

STATE OF MISSOURI  
BOB D. CAMPBELL  
PROFESSIONAL ENGINEER  
6-16-21

ARCHITECT	STRUCTURAL ENGINEER	CIVIL ENGINEER	MECHANICAL ENGINEER	PLUMBING ENGINEER	ELECTRICAL ENGINEER
TR,i ARCHITECTS	BOB D CAMPBELL & COMPANY	RENAISSANCE INFRASTRUCTURE CONSULTING	BRINKMANN CONSTRUCTORS	LATIMER SOMMERS & ASSOCIATES	LATIMER SOMMERS & ASSOCIATES



# Summit at West Pryor

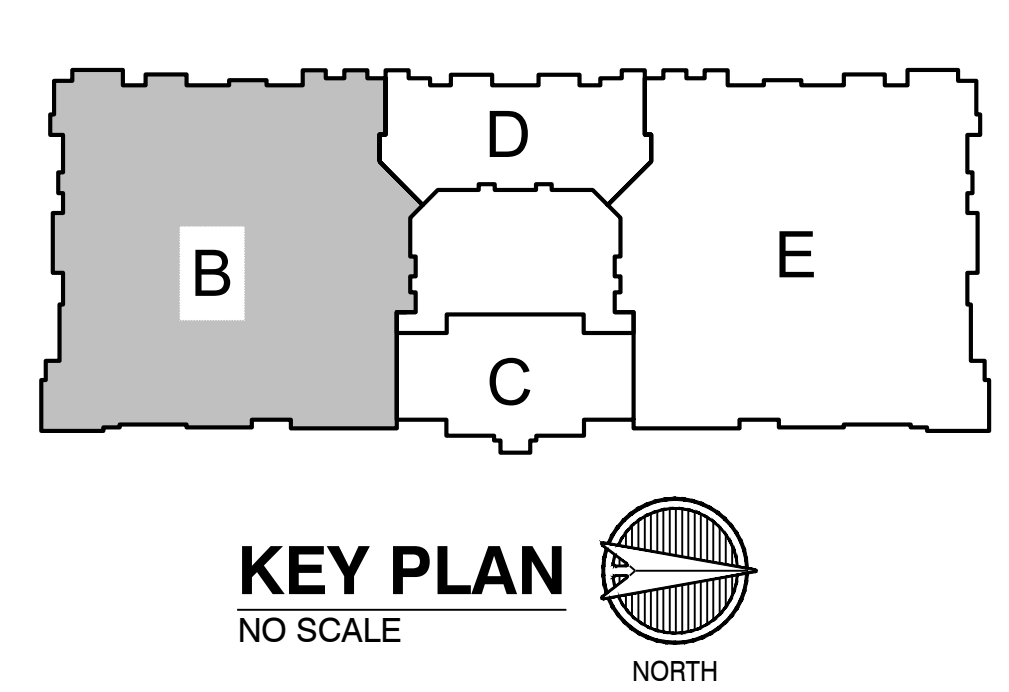
940 NW Pryor Road  
Lee's Summit, Missouri 64081

TR,i ARCHITECTS  
1750 Brentwood Blvd  
St. Louis, Missouri 63144  
T: 314-365-0750  
www.triarchitects.com

DATE: 5.21.21

REVISIONS

NO.	DESCRIPTION	DATE
1	ASI 2	6.16.21



**1** FIRST FLOOR PLAN - AREA B  
3/32"=1'-0"  
PLUMBING

**LS&A**  
Latimer Sommers & Associates, P.A.  
CONSULTING ENGINEERS  
3626 SW Sumnerfield Drive, Suite A  
Topeka, Kansas 66614-3974  
Telephone: (785) 233-0232  
FAX: (785) 233-0647  
Email: lspw@lsapa.com  
LEA PROJECT NO. 1804022

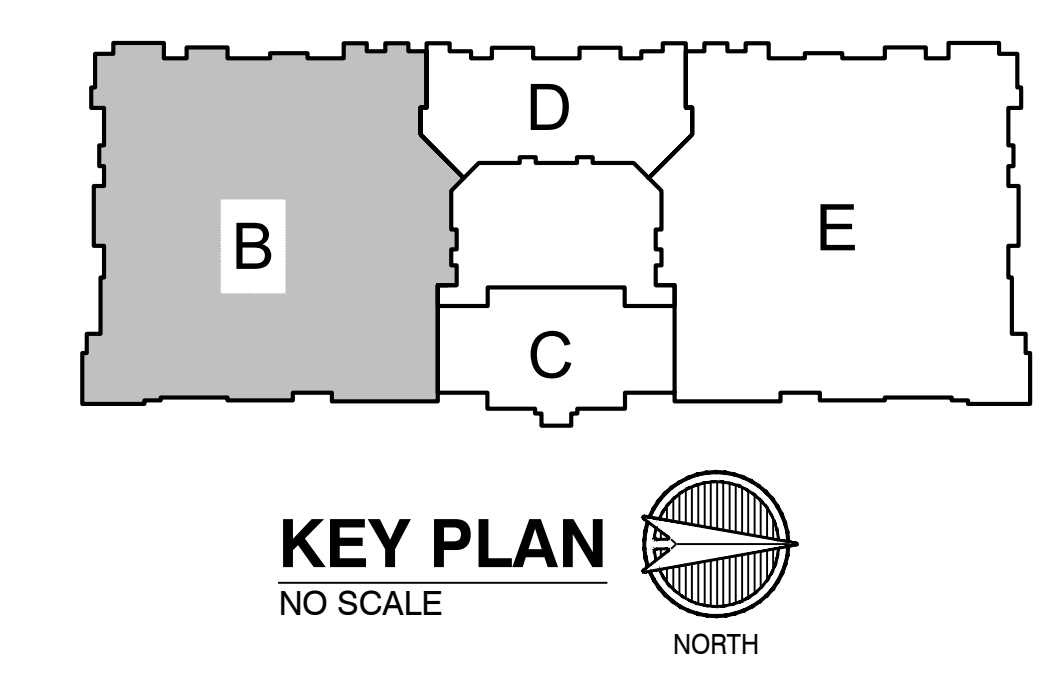
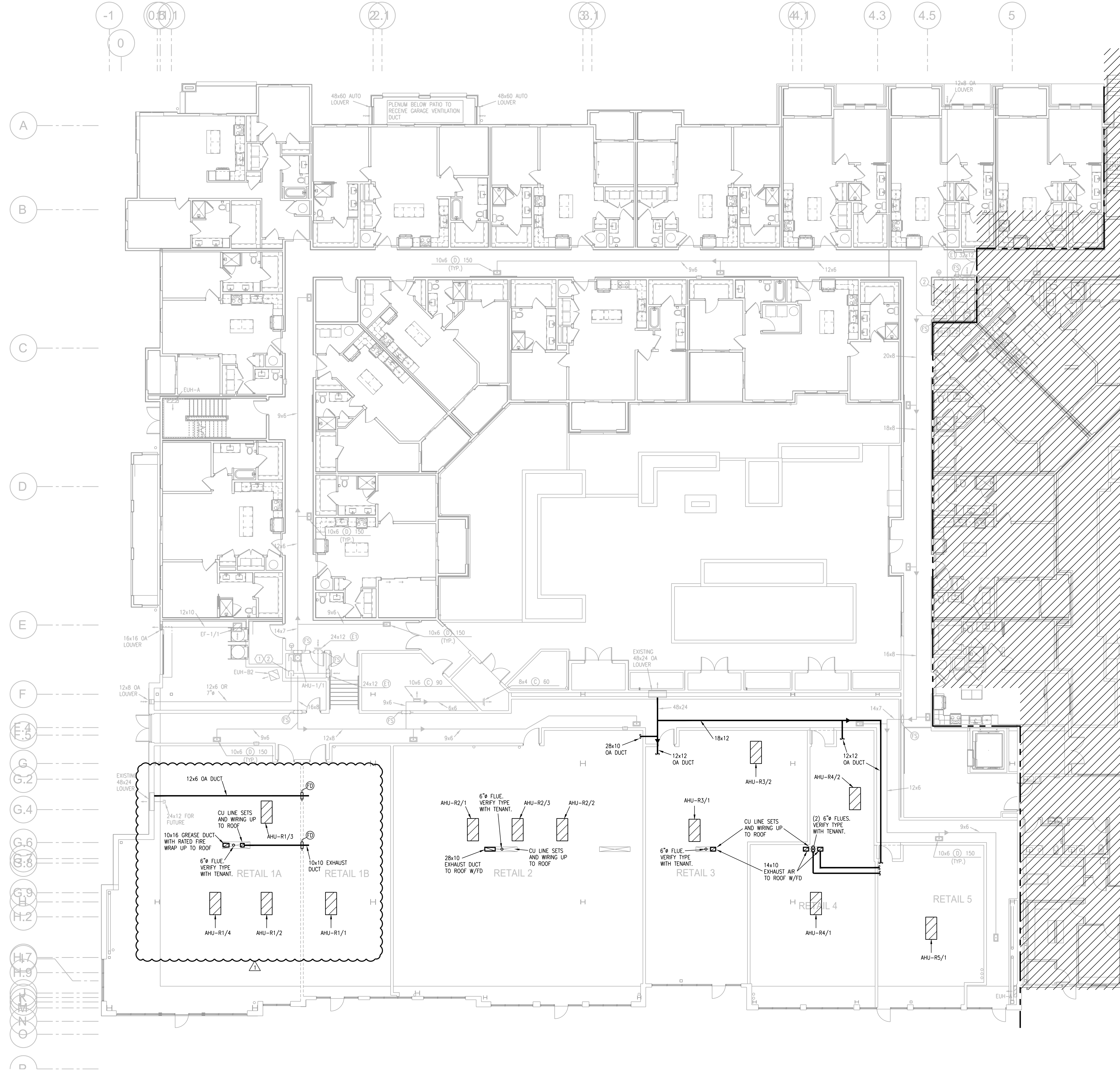
DWG BY: RRB  
TR,i PROJECT NO.: 18-046  
SHEET NO.: **P105**  
FIRST FLOOR PLAN - AREA B  
- PLUMBING  
FOR INFORMATION ONLY



HVAC SYSTEM SCHEDULE																				
MARK	MFR	NOM TON	MODEL	CFM	OA CFM	AHU				OUTDOOR UNIT				NOTES						
						E.S.P.	HP	SMBH	TMBH	HEAT CAP	ELEC	FLA	OCF		MFR	MODEL	ELEC	FLA	OCF	SEER
R1/2, R1/3, R1/4, R3/1, R3/2, R4/2, R8/2, R8/3, R8/4	GOODMAN	4	ARUF81D14	1600	TBD	0.5	0.75	32	48	11.4 KW	208/1	57	70	GOODMAN	GSX14-0481	208/1	21	45	14.0	2
R1/1, R5/1, R6/1, R6/2, R7/1, R7/2, R7/3, R8/1	GOODMAN	5	ARUF81D14	1850	TBD	0.5	0.75	41	57.5	11.4 KW	208/1	57	70	GOODMAN	GSX14-0601	208/1	26.3	50	14.0	
R4/1	GOODMAN	3	ARUF-37C14	1350	TBD	0.4	FR	25.8	33	7.5 KW	208/1	40	50	GOODMAN	GSX14-037	208/1	15	30	14.0	
R6/3	GOODMAN	2	ARUF25B14	800-800	100	0.5	0.33	17.0	23.2	7.5 KW	208/1	40	50	GOODMAN	GSX14-025	208/1	14	25	14.0	
R2/1	GOODMAN	4	ARUF81D14	1600	TBD	0.5	0.75	32	48		208/1	4	15	GOODMAN	GSZ14-0481	208/3	18	30	14.0	1
R2/2	GOODMAN	2	ARUF25B14	800-800	100	0.5	0.33	17.0	23.2		208/1	4	15	GOODMAN	GSZ14-025	208/1	14	20	14.0	1
R2/3	GOODMAN	4	ARUF81D14	1600	TBD	0.5	0.75	32	48	15 KW	208/3	40	50	GOODMAN	GSZ14-0481	208/3	18	30	14.0	

NOTE: PROVIDE LONG LINE ACCESSORY KIT ON ALL SPLIT SYSTEMS THAT EXCEED MFR'S LIMITS  
 1 - PROVIDE CRANKCASE HEATERS, HARD START KIT, 4" FILTER RACK  
 2 - UNITS 31, 32 TO HAVE 4" FILTER RACK AND HEPA FILTER

NOTES:  
 1. AHU POSITIONS TO BE VERIFIED WITH TENANTS.



**1** FIRST FLOOR PLAN - AREA B  
 3/32"=1'-0"  
 HVAC NORTH

STATE OF MISSOURI  
 PROFESSIONAL ENGINEER  
 6-16-21

ARCHITECT  
 TR,i ARCHITECTS  
 BOB D CAMPBELL & COMPANY  
 RENAISSANCE INFRASTRUCTURE CONSULTING  
 BRINKMANN CONSTRUCTORS

STRUCTURAL ENGINEER  
 CIVIL ENGINEER  
 GENERAL CONTRACTOR  
 MECHANICAL ENGINEER  
 PLUMBING ENGINEER  
 ELECTRICAL ENGINEER

LATIMER SOMMERS & ASSOCIATES  
 LATIMER SOMMERS & ASSOCIATES  
 LATIMER SOMMERS & ASSOCIATES



**Summit at West Pryor**  
 940 NW Pryor Road  
 Lee's Summit, Missouri 64081

TR,i ARCHITECTS  
 TR,i Architects  
 1750 Brentwood Blvd  
 St. Louis, Missouri 63144  
 Copyright 2018 www.triarchitects.com T: 314-365-9750

DATE: 5.21.21

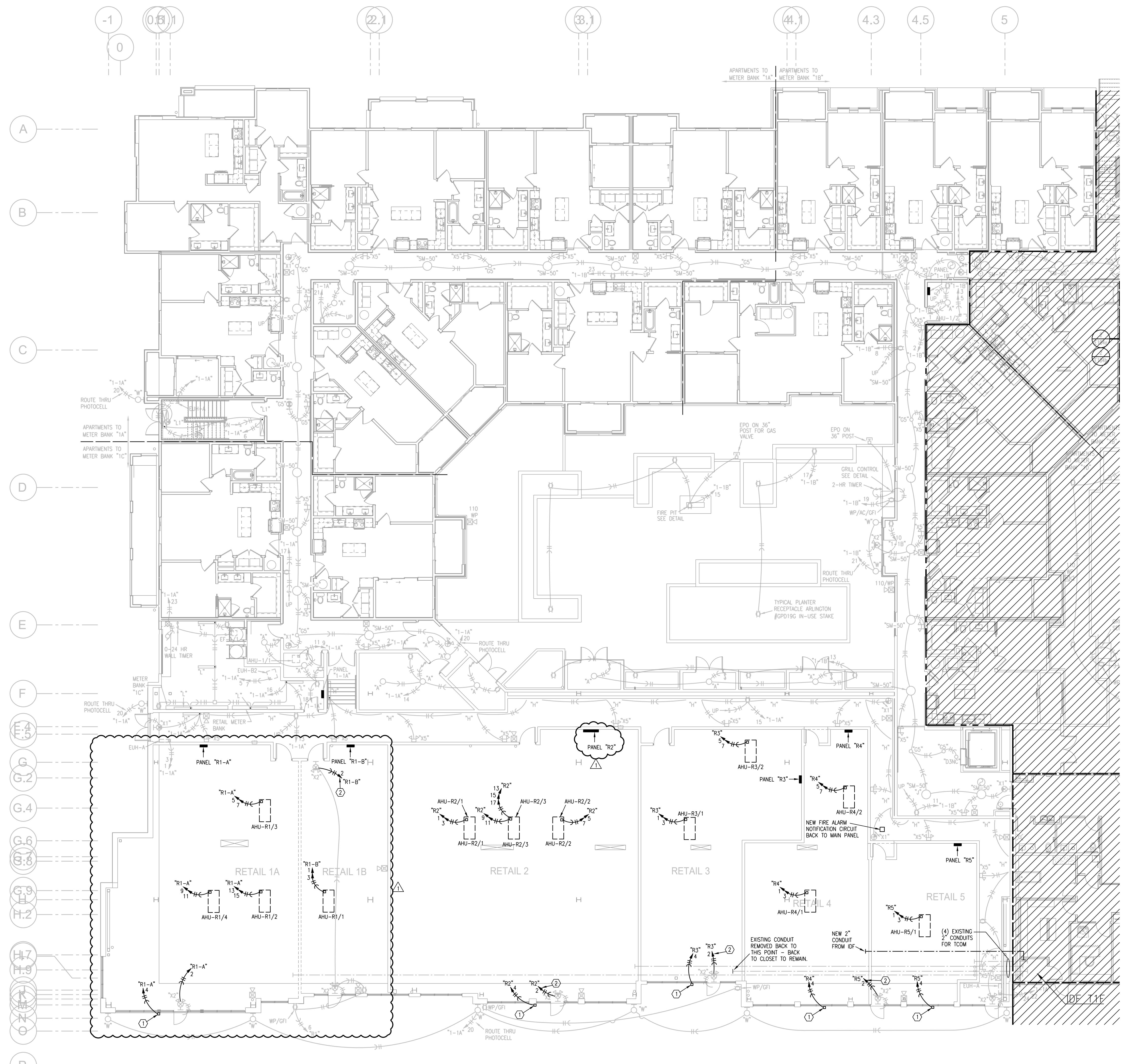
REVISIONS

1	ASI 2	6.16.21
---	-------	---------

**LS&A**  
 Latimer Sommers & Associates, P.A.  
 CONSULTING ENGINEERS  
 3636 SW Summerfield Drive, Suite A  
 Topeka, Kansas 66614-3974  
 Telephone: (785) 233-3332  
 FAX: (785) 233-0647  
 Email: lsapa@lsapa.com  
 LEA PROJECT NO. 1804022

DWG BY: RRB  
 TR,i PROJECT NO.: 18-046  
 SHEET NO.: **M103**  
 FIRST FLOOR PLAN - AREA B - HVAC





- NOTES:
1. ALL  $\odot$  ARE TYPE "A" UNLESS NOTED OTHERWISE.
  2. ALL STAR LIGHTS ARE TYPE "11" UNLESS NOTED OTHERWISE.
  3. ALL  $\odot$  ARE TYPE "X1" UNLESS NOTED OTHERWISE.
  4. ALL  $\odot$  ARE TYPE "X2" UNLESS NOTED OTHERWISE.
  5. ALL  $\odot$  ARE TYPE "X5" UNLESS NOTED OTHERWISE.
  6. CONNECT FIRE/SMOKE DAMPERS SHOWN ON MECHANICAL PLANS TO 120V AND FIRE ALARM RELAY TO SHUT UPON SMOKE DETECTION IN CORRIDORS.
  7. SEE UNIT PLANS FOR FURTHER WORK.
  8. LIGHTS AT APT. ENTRY DOORS CONNECT TO APT. HOT CIRCUIT.
  9. ALL AHU'S HAVE AUTO DAMPER/THERMOSTAT SYSTEM TO WIRE. SEE HVAC PLANS.
  10. EXIT SIGNS SHALL BE READILY VISIBLE TO OCCUPANTS.
  11. EXTERIOR LIGHTING TO BE ROUTED THRU PHOTOCELL.
  12.  $\text{TOP-1}$  DENOTES DISTRIBUTION PANEL.

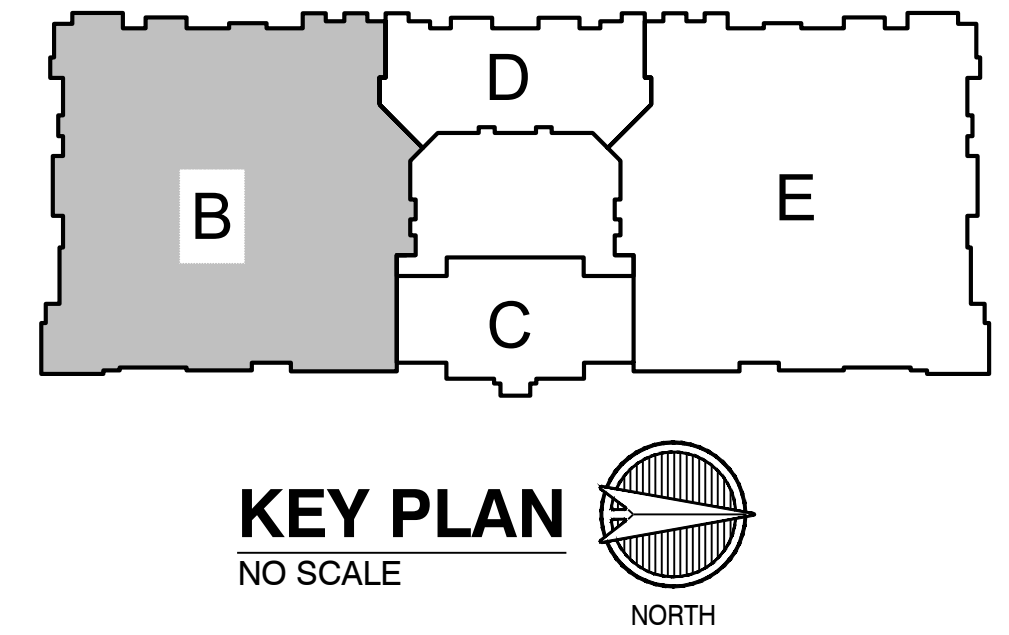
LEGEND:  
 ① TO LIGHTING CONTROL PANEL.

- NOTES:
1. VERIFY PANEL LOCATIONS WITH TENANT PLANS.
  2. PROVIDE (1) 2" CONDUIT FROM TENANT SPACE IN CHASE UP TO ROOF FOR FUTURE USE.
  3. EXTERIOR DOOR/EXIT SIGN LOCATIONS MAY CHANGE.
  4. CONNECT NEW FIRE ALARM DEVICES TO EXISTING HORN/STROBES UP TO 10 ADDITIONAL DEVICES.

LEGEND:  
 ① JUNCTION BOX (JB) FOR SIGN WITH CIRCUIT TO TENANT PANEL.  
 ② NEW HOME RUN.

PANELBOARD SUMMARY		BRANCH BREAKERS	
MARK	QUANT	BUS AMPS	
R1	1	400	(4) 70/2, (1) 50/2, (2) 45/2, (1) 25/2, 20/1
R2	2	400	(2) 45/2, (1) 40/3, (1) 25/2, (3) 15/2, (20) 20/1
R3	1	200	(2) 50/2, (2) 30/2, (20) 20/1
R4	1	200	(1) 70/2, (1) 50/2, (1) 30/2, (1) 45/2, (20) 20/1
R5	1	200	(1) 70/2, (1) 50/2, (20) 20/1
R6	2	400	(2) 70/2, (3) 50/2, (1) 25/2, (20) 20/1
R7	1	400	(3) 70/2, (3) 50/2, (20) 20/1
R8	1	400	(4) 70/2, (1) 50/2, (3) 45/2, (20) 20/1

NOTES: ALL PANELS ARE 120/208V 3PH 4W, MLO, 42 SPACE



**1** FIRST FLOOR PLAN - AREA B  
 3/32"=1'-0" ELECTRICAL NORTH

STATE OF MISSOURI  
 BOB D CAMPBELL & COMPANY  
 ARCHITECTS  
 ARCHITECT  
 STRUCTURAL ENGINEER  
 CIVIL ENGINEER  
 GENERAL CONTRACTOR  
 MECHANICAL ENGINEER  
 PLUMBING ENGINEER  
 ELECTRICAL ENGINEER



# Summit at West Pryor

940 NW Pryor Road  
 Lee's Summit, Missouri 64081

TRJ ARCHITECTS  
 TRJ Architects  
 1750 Brentwood Blvd  
 St. Louis, Missouri 63144  
 T: 314-365-0750  
 www.trjarchitects.com

DATE: 5.21.21

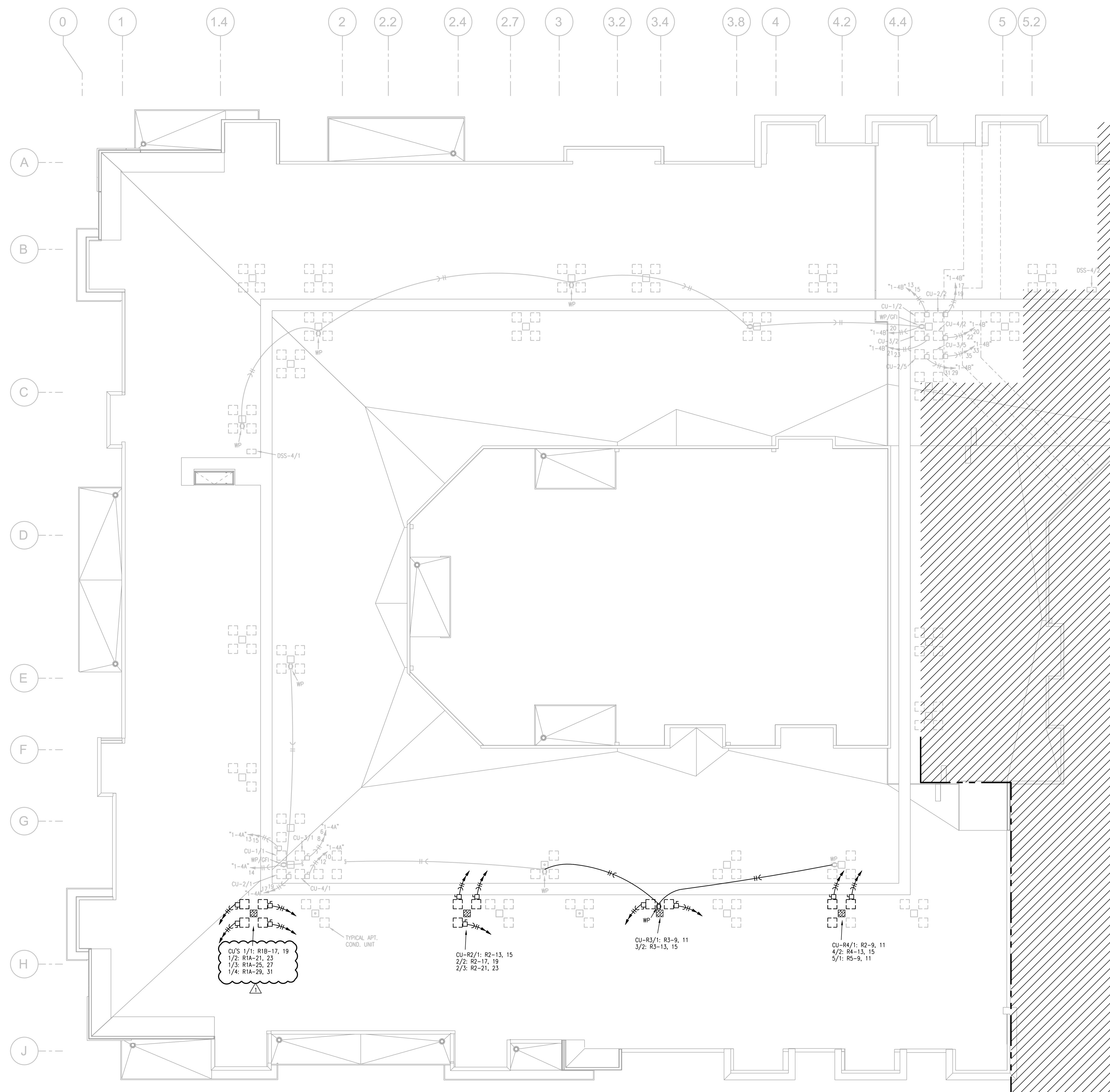
REVISIONS

NO.	DESCRIPTION	DATE
1	ASI 2	6.16.21

DWG BY	RRB
TRJ PROJECT NO.	18-046
SHEET NO.	E103

LS&A  
 LATIMER SOMMERS & ASSOCIATES, P.A.  
 CONSULTING ENGINEERS  
 3626 SW Summerfield Drive, Suite A  
 Topeka, Kansas 66614-3974  
 Telephone: (785) 233-0252  
 FAX: (785) 233-0647  
 Email: lsap@lsapa.com  
 LDA PROJECT NO. 1804023





- NOTES:
1. ALL  $\odot$  ARE TYPE "A" UNLESS NOTED OTHERWISE.
  2. ALL STAR LIGHTS ARE TYPE "L1" UNLESS NOTED OTHERWISE.
  3. ALL  $\odot$  ARE TYPE "X1" UNLESS NOTED OTHERWISE.
  4. ALL  $\odot$  ARE TYPE "X2" UNLESS NOTED OTHERWISE.
  5. ALL  $\odot$  ARE TYPE "X5" UNLESS NOTED OTHERWISE.
  6. CONNECT FIRE/SMOKE DAMPERS SHOWN ON MECHANICAL PLANS TO 120V. AND FIRE ALARM RELAY TO SHUT UPON SMOKE DETECTION IN CORRIDORS.
  7. SEE UNIT PLANS FOR FURTHER WORK.
  8. LIGHTS AT APT. ENTRY DOORS CONNECT TO APT. HOT CIRCUIT.
  9. ALL AHU'S HAVE AUTO DAMPER/THERMOSTAT SYSTEM TO WIRE. SEE HVAC PLANS.
  10. EXIT SIGNS SHALL BE READILY VISIBLE TO OCCUPANTS.
  11. EXTERIOR LIGHTING TO BE ROUTED THRU PHOTOCELL.
  12.  $\square$  DENOTES DISTRIBUTION PANEL.

LEGEND:  
 ① TO LIGHTING CONTROL PANEL.

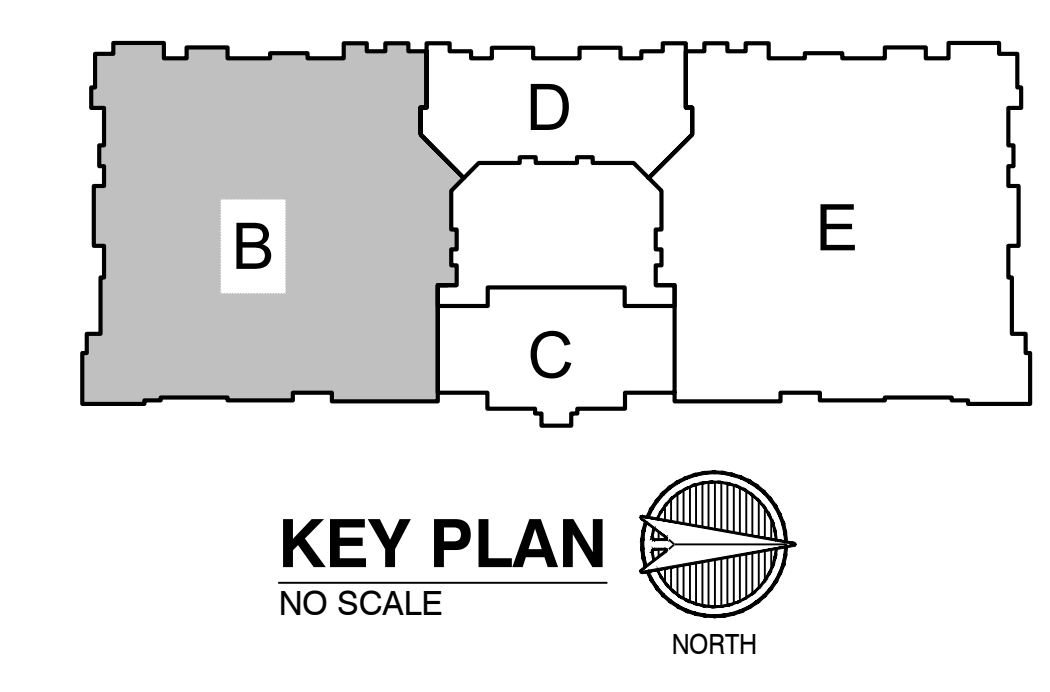
- NOTES:
1. VERIFY PANEL LOCATIONS WITH TENANT PLANS.
  2. PROVIDE (1) 2" CONDUIT FROM TENANT SPACE IN CHASE UP TO ROOF FOR FUTURE USE.
  3. EXTERIOR DOOR/EXIT SIGN LOCATIONS MAY CHANGE.
  4. CONNECT NEW FIRE ALARM DEVICES TO EXISTING HORN/STROBES UP TO 10 ADDITIONAL DEVICES.

LEGEND:  
 ① JUNCTION BOX (JB) FOR SIGN WITH CIRCUIT TO TENANT PANEL.  
 ② NEW HOME RUN.

PANELBOARD SUMMARY

MARK	QUANT	BUS AMPS	BRANCH BREAKERS
R1	1	400	(4) 70/2, (1) 50/2, (2) 45/2, (1) 25/2, 20/1
R2	2	400	(2) 45/2, (1) 40/3, (1) 25/2, (3) 15/2, (20) 20/1
R3	1	200	(2) 50/2, (2) 30/2, (20) 20/1
R4	1	200	(1) 70/2, (1) 50/2, (1) 30/2, (1) 45/2, (20) 20/1
R5	1	200	(1) 70/2, (1) 50/2, (20) 20/1
R6	2	400	(2) 70/2, (3) 50/2, (1) 25/2, (20) 20/1
R7	1	400	(3) 70/2, (3) 50/2, (20) 20/1
R8	1	400	(4) 70/2, (1) 50/2, (3) 45/2, (20) 20/1

NOTES: ALL PANELS ARE 120/208V 3PH 4W, MLO, 42 SPACE



1 ROOF PLAN - AREA B  
 3/32"=1'-0" ELECTRICAL NORTH

STATE OF MISSOURI  
 BOB D CAMPBELL & COMPANY  
 ARCHITECTS  
 ARCHITECT  
 STRUCTURAL ENGINEER  
 CIVIL ENGINEER  
 GENERAL CONTRACTOR  
 MECHANICAL ENGINEER  
 PLUMBING ENGINEER  
 ELECTRICAL ENGINEER



# Summit at West Pryor

940 NW Pryor Road  
 Lee's Summit, Missouri 64081

TRJ ARCHITECTS

TRJ Architects  
 1750 Brentwood Blvd  
 St. Louis, Missouri 63144  
 T: 314-365-0750  
 www.trjarchitects.com

DATE: 5.21.21

REVISIONS

NO.	DESCRIPTION	DATE
1	ASI 2	6.16.21

DWG BY: RRB  
 TRJ PROJECT NO.: 18-046  
 SHEET NO.:

# E112

ROOF PLAN - AREA B  
 - ELECTRICAL

LS&A  
 LATIMER SOMMERS & ASSOCIATES, P.A.  
 CONSULTING ENGINEERS  
 3626 SW Sumnerfield Drive, Suite A  
 Topeka, Kansas 66614-3974  
 Telephone: (785) 233-0202  
 FAX: (785) 233-0647  
 Email: lsp@lsapa.com  
 LEA PROJECT NO. 1804023



