

*LEE'S SUMMIT, JACKSON COUNTY, MISSOURI*

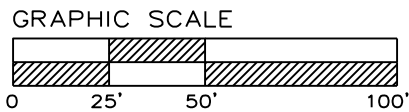
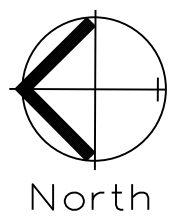
## C.400







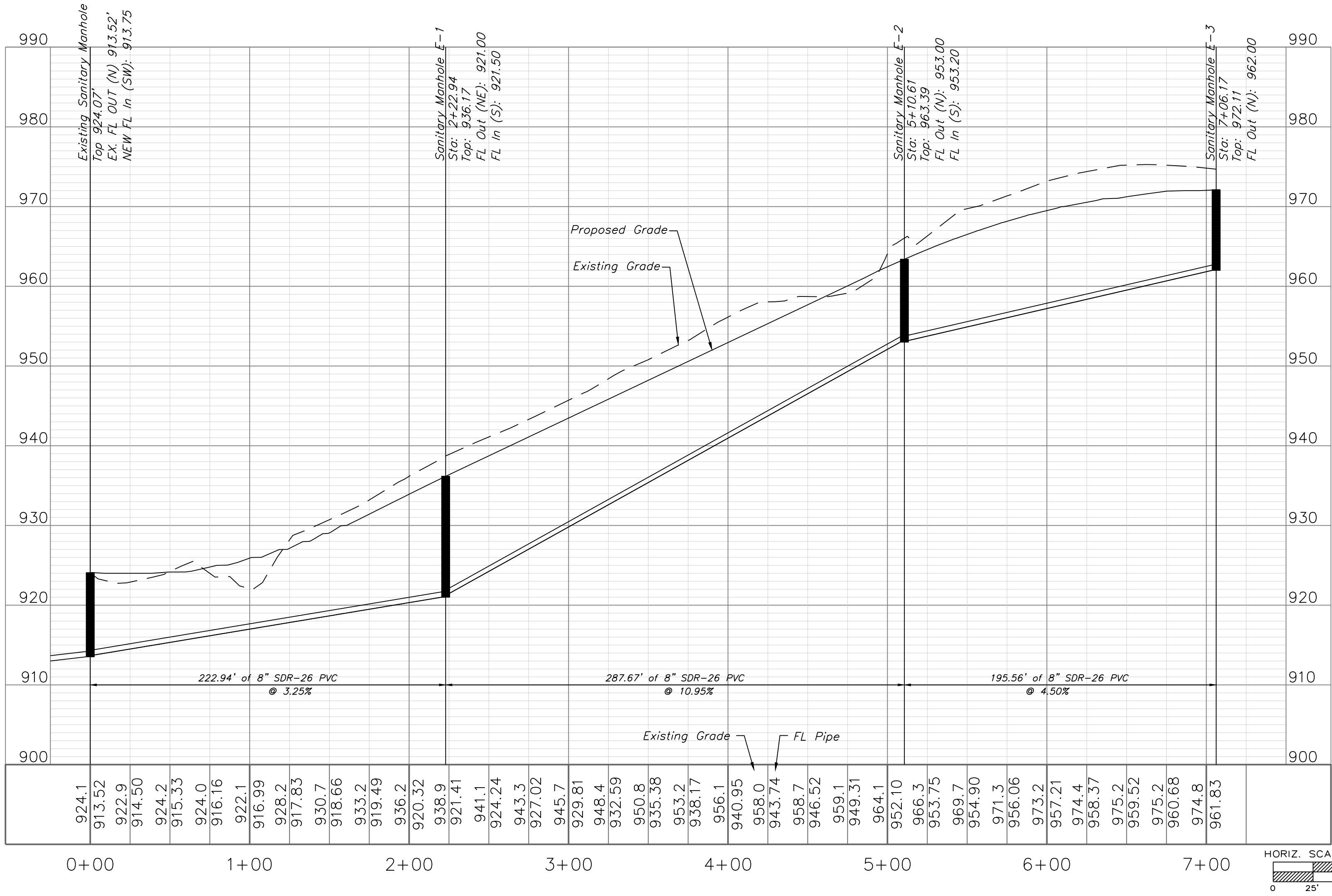
GENERAL NOTE:  
1 ~ ALL CONSTRUCTION SHALL CONFORM TO THE CITY OF LEE'S SUMMIT DESIGN AND CONSTRUCTION MANUAL AS ADOPTED BY ORDINANCE 5813.  
2 ~ TRENCH CHECKS SHALL BE INSTALL AT ALL SANITARY WYES LOCATION.  
3 ~ COMPACTED FILL SHALL BE PLACED TO A MINIMUM 18" ABOVE THE TOP OF THE PIPE PRIOR TO INSTALLATION.



SANITARY PLAN & PROFILE  
SCALE: 1" = 50'



## SANITARY LINE E



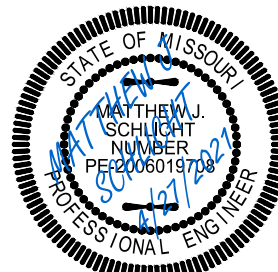
RELEASE FOR  
CONSTRUCTION  
AS NOTED ON PLANS REVIEW  
DEVELOPMENT SERVICES  
LEE'S SUMMIT, MISSOURI  
06/16/2021



Professional Registration  
Missouri  
Engineering 2005002186-D  
Surveying 2005008319-D  
Kansas  
Engineering E-1685  
Surveying LS-218  
Oklahoma  
Engineering 6254  
Nebraska  
Engineering CA2821

Project:  
MANOR AT PARK  
RIDGE  
Issue Date:  
August 25, 2020

Sanitary Plan and Profile  
PARK RIDGE 8TH PLAT  
Section 9, Township 48 North, Range 31 West  
Lee's Summit, Jackson County, Missouri



Matthew J. Schlicht  
MO PE 2006019708  
KS PE 19071  
OK PE 25226  
NE PE E-14335

REVISIONS  
REV. 4/20/2021  
REV. 4/27/2021



