



6/11/2

HANNEY & ASSOCIATES, ARCHITECTS
1726 South Hillside, Wichita, Kansas, 67211
Phone (316) 683-8965
Fax (316) 684-1441

6/11/21

HANNEY & ASSOCIATES, ARCHITECTS
1726 South Hillside, Wichita, Kansas, 67211
Phone (316) 683-8965
Fax (316) 684-1441

2021
GENESIS HEALTH CLUBS
900 N.E. Deerbrook Terrace
Lee's Summit, Missouri 64086



DRAWINGS		ISSUED	
NO.	DATE	ITEM	ISSUED
10	6/11/21	CODE REVISION	
4	05/31/21	PLAN REVIEW	
8	05/21/21	REVIEW	
7	04/21/21	REVIEW	
6	04/20/21	REVIEW	
5	03/30/21	REVIEW	
4	03/05/21	REVIEW	
3	03/02/21	REVIEW	
2	1/12/21	REVIEW	
1	12/22/20	REVIEW	

COMPUTER DRAWING

DATE: JANUARY, 2021	
DRAWN BY:	CHECKED BY:
JH, CW	CS

SHEET

E0.1

OF - SHEETS

ABBREVIATIONS

A/C AMPS; AIR (COMPRESSED)
A/C AIR CONDITIONING
AFC AMFEE
AFC ABOVE FINISHED CEILING
AFA AIR FLOOR VACUATION ASSISTANCE
AFC ABOVE FINISHED FLOOR
AFC ABOVE FINISHED GRADE
AIR AIR LING UNIT
AIR AMPERE INTERRUPTING CURRENT
ALUMINUM
AFD AIR PRESSURE DROP
ATS AUTOMATIC TRANSFER SWITCH
AVT A/C UNIT
AM ACID WASTE
ANG AMERICAN WIRE GAUGE

BCU BLOWER COIL UNIT
BEP BASE PUMP
BHP BRAKE HORSEPOWER
BFF BOTTOM FINISHED FLOOR
BOT BOTTOM OF DUCT
BOP BOTTOM OF PIPE
BOS BOTTOM OF STRUCTURE
BTU/H BRITISH THERMAL UNITS PER HOUR

C CONDUIT
CT CURRENT TRANSFORMER
CATV CABLE TELEVISION SYSTEM
COTV COOLING AIR VOLUME
CCTV CLOSED CIRCUIT TELEVISION
CCF CONCENTRATE DRAIN
CFCI CONTRACTOR FURNISHED, CONTRACTOR
INSTALLED
CFH CUBIC FEET PER HOUR
CFM CUBIC FEET PER MINUTE
CH CHILLER
CO2 CLEANOUT, CARBON MONOXIDE
CO2 CARBON DIOXIDE
CTR COOLING TOWER
CTR COOLING TOWER RETURN
C15 COOLING TOWER SUPPLY
C15 CONDENSING UNIT
CUH CABINET UNIT HEATER
CUH COLD WATER
CWR CHILLED WATER RETURN
CWS CHILLED WATER SUPPLY

D DRAIN
DDG DIRECT DIGITAL CONTROL
DRA DRAINAGE FIXTURE UNITS
DN DOWN
DP DOUBLE-POLE, DOUBLE-THROW
DPST DOUBLE-POLE, SINGLE-THROW
DX DIRECT EXPANSION

EA EXHAUST AIR
EET ENTERING AIR TEMPERATURE
EET ELECTRICAL CONTRACTOR
EDB ENTERING DRY BULB
EEX1 EXIST FAN
EJ EXPANSION JOINT
EFSR EARLY SUPPRESSION FAST RESPONSE
ESTR EXISTING STATIC PRESSURE
ETR EXISTING TO REMAIN
EWC EXISTING WET BULB
EWC ELECTRIC WATER COOLER

F FAULT ALARM ANNUNCIATOR
FAL FIRE ALARM CONTROL PANEL
FBO FURNISHED BY OTHERS
FCD FLOOR CLEANOUT
FCD FAN COIL UNIT
FCD FLOOR DRAIN, FLOOR DRAIN
FCD FINISHED FLOOR
FCD FINISHED GRADE CLEANOUT
FL LINE
FLA FULL LOAD AMPS
FMT FIRE DETECTION CONTRACTOR
FNT FAN TERMINAL UNIT
FVNR FULL VOLTAGE, NON-REVERSING

G NATURAL GAS,
G GROUND FAULT INTERRUPTER
GFCI GROUND FAULT CONTRACTOR
GFI GROUND FAULT INTERRUPTER
GMD GALLONS
GPH GALLONS PER HOUR
GPM GALLONS PER MINUTE
GRW GREASE WASTE

H HOSE BIBB
HCR HOT/CHILLED WATER RETURN
HCS HOT/CHILLED WATER SUPPLY
HED HEAT DRAIN
HOA HAND-OFF-AUTOMATIC
HEC HEAT PUMP
HPC HIGH PRESSURE CONDENSATE
HPS HEAT PUMP RETURN
HPS HEAT PUMP SUPPLY, HIGH PRESSURE STEAM,
HPS HIGH PRESSURE SODIUM
HSTAT HUMIDISTAT
HEAT HEATER
HNR HOT WATER RETURN
HWS HOT WATER SUPPLY

I INSIDE DIAMETER
IE INVERT ELEVATION
ISL ISOLATED GROUND
IN INCHES OF WATER COLUMN
INC INCANDESCENT

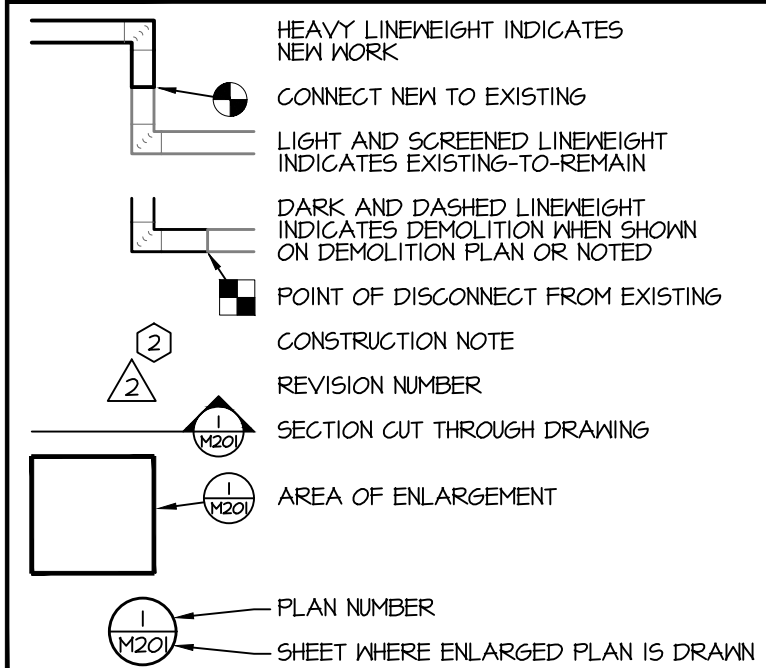
incil 1000 CIRCULAR MILS
KV KILOVOLT
KVA KILOWATT-AMPS
KVAR KILOWATT-AMPS REACTIVE
KL KILONATT
KWH KILOWATT-HOUR

L LAVATORY
LAT LEAVING AIR TEMPERATURE
LDB LEAVING DRY BULB
LIN LINEAR FEET
LP LOW PRESSURE
LPS LOW PRESSURE STEAM CONDENSATE
LPS LIQUIFIED PETROLEUM GAS (PROPANE)
LPS LOW PRESSURE STEAM
LOS LOOSE ROTOR ASSEMBLY
LMB LEAVING MET BULB
LMT LEAVING MET TEMPERATURE

MEH 1000 BTU PER HOUR
MEQ MECHANICAL CONTRACTOR
MCA MINIMUM CIRCUIT AMPACITY
MCC MOTOR CONTROL CENTER
MCL 1000 CIRCULAR MILS
MD MOTORIZED DAMPER
MFD MANUFACTURING PANEL
MFR MANUFACTURER
MH MANGANESE, METAL HALIDE
ML LOW LOSS OIL
MPG MEDIUM PRESSURE CONDENSATE
MPS MEDIUM PRESSURE STEAM
MS MOTOR STARTER
MSB MAIN SWITCHBOARD
MOTOR MOTOR
MAU MAKE-UP AIR UNIT

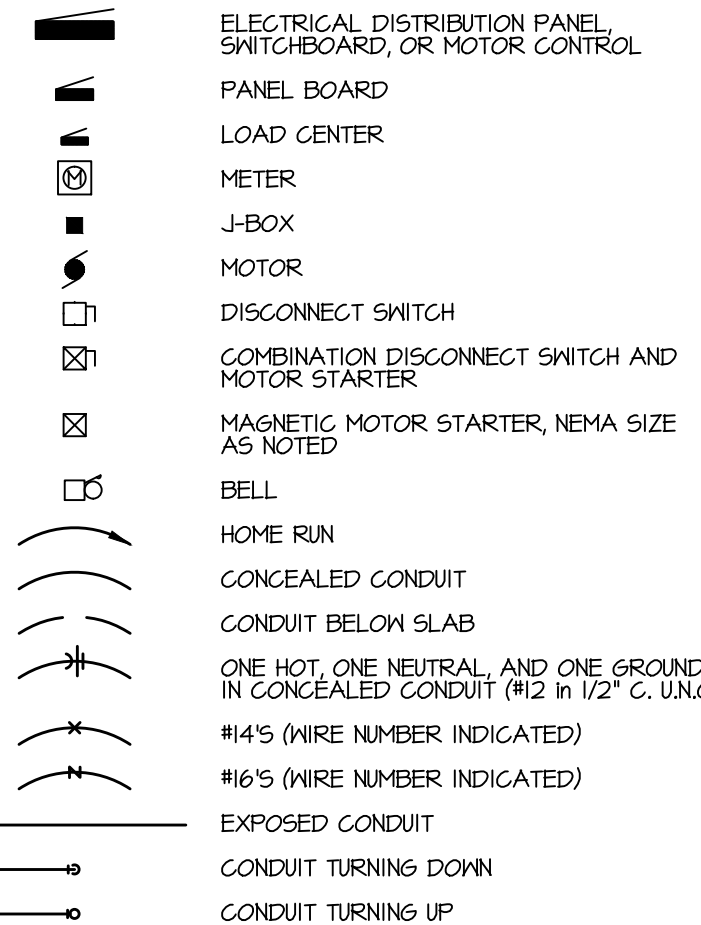
N NITROGEN
NA NOT APPLICABLE
NCR NON-CORROSIVE
NFH NON-FREEZE WALL HYDRANT
NC NOT IN CONTRACT
NITRO NITROGEN
NO NO
NO NC NORMALLY OPEN, NORMALLY CLOSED

GENERAL

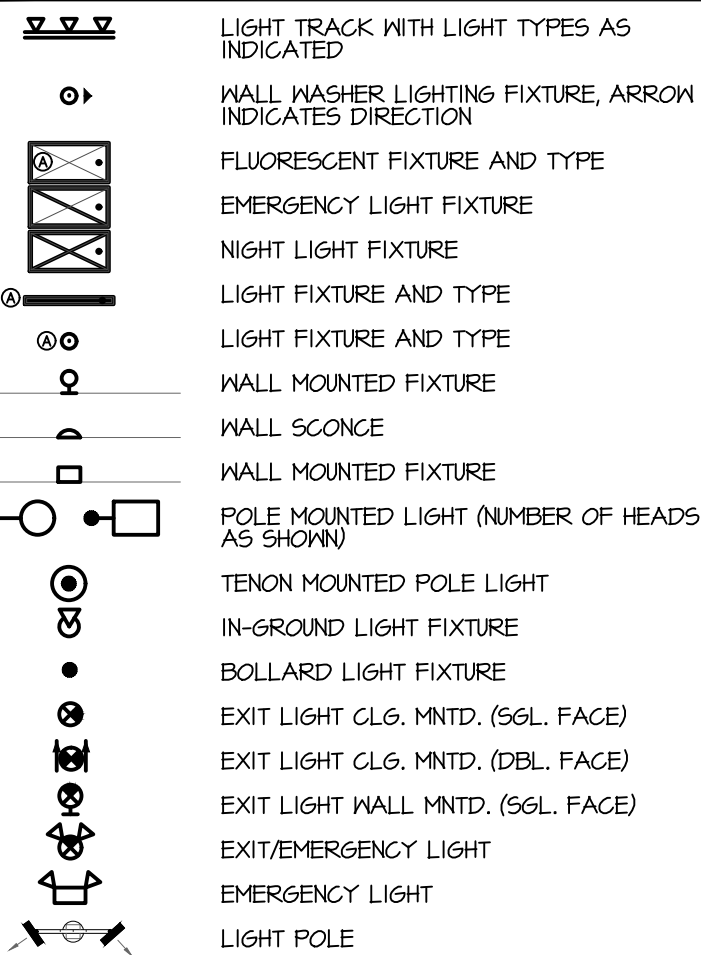


SYMBOLS

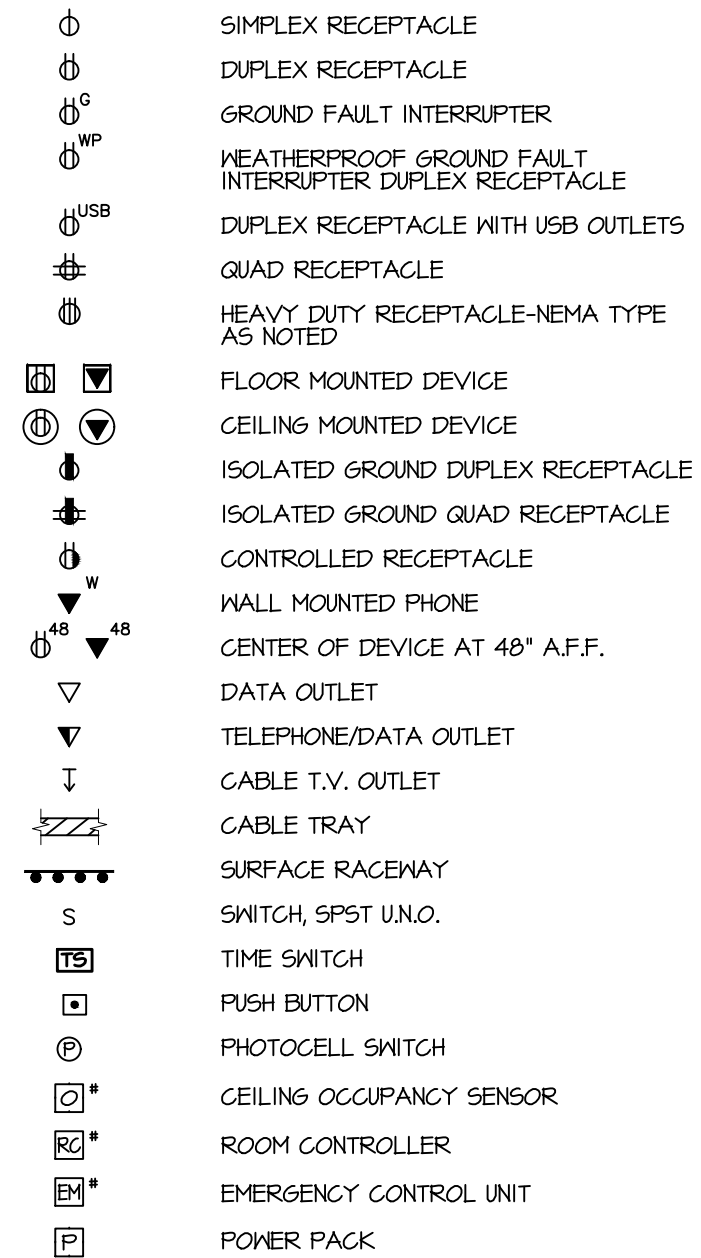
POWER EQUIPMENT



LIGHTING



WIRING DEVICES & OUTLETS



THIS IS A MASTER LEGEND.
NOT ALL SYMBOLS, ABBREVIATIONS
ETC. ARE USED ON THE DRAWINGS.

GENERAL REQUIREMENTS

- THE CONTRACTOR INCLUDES ALL LABOR, MATERIAL, AND EQUIPMENT REQUIRED FOR THE COMPLETE SYSTEMS AS SHOWN AND SPECIFIED. PROVIDE ALL DEVICES AND ACCESSORIES AS NECESSARY FOR COMPLETE AND WORKING SYSTEMS.
2. THE CONTRACTORS SHALL BECOME FAMILIAR WITH THE WORK OF ALL OTHER TRADES AND SHALL FULLY COORDINATE THEIR WORK PRIOR TO ORDERING EQUIPMENT OR INSTALLATION OF SYSTEMS.
3. THE MATERIALS, PRODUCTS AND EQUIPMENT DESCRIBED IN THESE SPECIFICATIONS OR ON THE DRAWINGS ESTABLISH A STANDARD OF PERFORMANCE, QUALITY, FINISH, APPEARANCE, AND QUALITY TO BE MET BY ANY PROPOSED SUBSTITUTION. LISTING OF THESE MANUFACTURERS SHALL IN NO WAY BE CONSIDERED AS A DEVICE INTENDED TO LIMIT THE OWNERS' CHOICE OF EQUIPMENT.
4. REFERENCE TO ANY ARTICLE, DEVICE, PRODUCT, MATERIAL, FIXTURE, FORM OR TYPE OF CONSTRUCTION BY NAME, MAKE, OR CATALOG NUMBER, SHALL BE INTERPRETED AS HAVING ESTABLISHED A STANDARD OF PERFORMANCE TO BE OBSERVED AS LIMITING COMPETITION. ARTICLES, FIXTURES, OR EQUIPMENT QUALITY BY MANUFACTURERS LISTED IN THIS SPECIFICATION FOR THE APPLICABLE USE, SHALL BE ACCEPTED AS SUBJECT TO THE TECHNICAL, MATERIAL, STRUCTURAL, AND ELECTRICAL CONSTRAINTS OF THE PROJECT DESIGN. THE ENGINEER RESERVES LAST OPINION AS TO THE CONTRACT'S EQUALITY OR SUPERIORITY TO THAT SPECIFIED.
5. SUBMITTALS: PROVIDE SUBMITTALS IN PDF FORMAT FOR ALL EQUIPMENT AND MAJOR MATERIALS SUPPLIED AND SHALL INCLUDE THE FOLLOWING INFORMATION: MANUFACTURER'S NAME AND MISCELLANEOUS DATA AS REQUIRED TO DESCRIBE THE EQUIPMENT; CAPACITY, VOLTAGE, PHASE, AMPLITUDE AND OTHER MISCELLANEOUS DATA TO QUANTIFY THE SIZE OF THE EQUIPMENT; DIMENSIONAL DATA INCLUDING WEIGHT, HEIGHT, CONNECTION POINTS AND DETAILED LAYOUT OF COMPONENTS; ELECTRICAL FULL LOAD AMPS AND MINIMUM CIRCUIT AMPACITIES; AND OTHER PERTINENT INFORMATION NEEDED TO COMPLETE THE DESIGN. SUBMITTALS SHALL BE CONSPICUOUSLY MARKED ON EACH SUBMITTAL WITH THE EXACT MODEL, FITTINGS, ACCESSORIES, AND DEVICES TO BE SUPPLIED. TAGS FOR EQUIPMENT SUBMITTED SHALL MATCH THE TAGS FOR THE INFORMATION ON THE DRAWINGS AND SPECIFICATIONS. WHERE EQUIPMENT IS NOTED ON THE DRAWINGS AND NOT SCHEDULED, REFER TO PLAN NOTE AND SHEET NUMBER ON THE SUBMITTAL. CONTRACTOR SHALL CHECK AND COMMIT TO VERIFY ALL INFORMATION AND REQUIREMENTS OF THE DRAWINGS AND SPECIFICATIONS BEFORE FORWARDING TO THE ARCHITECT AND ENGINEER. ALL SUBMITTALS SHALL BEAR THE STAMP OF THE CONTRACTOR TO SHOW CONVEYANCE OF INFORMATION. ALL INFORMATION SHALL BE FABRICATED, AND NO EQUIPMENT ORDERED UNTIL THE ARCHITECT AND ENGINEER HAVE RETURNED ACCEPTABLE REVIEWED SUBMITTALS.
6. RECORDING AND DURING THE PROGRESS OF THE WORK OF THIS SECTION, THE CONTRACTOR SHALL MAINTAIN AN ACCURATE RECORD OF ALL CHANGES MADE IN THE INSTALLATION OF THE SYSTEMS. UPON COMPLETION OF THE WORK, THE CONTRACTOR SHALL PROVIDE INFORMATION TO CLEAN FULL-SIZE PLOTTED SET OF DRAWINGS WITH NEATLY HANDWRITTEN OR TYPED NOTES. SCAN THE DRAWINGS AND MARKUPS TO PDF AT 600 DPI.
7. OPERATIONS AND MAINTENANCE (O&M) MANUALS: BEFORE PROJECT CLOSE-OUT, THE CONTRACTOR SHALL SUBMIT O&M MANUALS FOR ALL EQUIPMENT PROVIDED IN THIS SECTION. THE O&M MANUALS SHALL INCLUDE INSTALLATION, OPERATION, MAINTENANCE, INSPECTION, TROUBLESHOOTING, CAPACITIES, SPARE PART NUMBERS, WARRANTIES, GUARANTEES, ETC. PROVIDE A LIST OF EMERGENCY SERVICE ORGANIZATIONS FOR EACH PIECE OF EQUIPMENT. KEEP IN A SAFE AND ACCESSIBLE LOCATION. PROVIDE A LIST OF TOOLS FURNISHED WITH EQUIPMENT. PROVIDE THREE HARD COPIES IN BINDERS LOGICALLY ORGANIZED, DIVIDED AND TABBED. PROVIDE ALL DATA IN ELECTRONIC PDF FORMAT ON REMOVABLE STORAGE DEVICE AND BOOKMARKED SIMILAR TO THE HARD COPY BINDERS.
8. PROVIDE OWNER TRAINING ON EACH PIECE OF EQUIPMENT AS TO STARTUP, SHUTDOWN, NORMAL MAINTENANCE, SEASONAL MAINTENANCE, AND TROUBLESHOOTING. TRAINING SESSIONS RECOMMENDED BY THE MANUFACTURER. TRAINING SESSIONS SHALL BE RECORDED ON DVD AND PROVIDED TO THE OWNER AT THE END OF CONSTRUCTION.
9. LOCATION OF EQUIPMENT, PIPES, AND OTHER WORK ARE INDICATED DIAGRAMMATICALLY ON THE DRAWINGS. EACH CONTRACTOR SHALL COORDINATE EXACT LOCATIONS SUBJECT TO STRUCTURAL, CONDITIONS, WORK OF OTHER CONTRACTORS, ACCESS REQUIREMENTS, AND THE APPROVAL OF THE ARCHITECT AND ENGINEER.
10. DRAWINGS AND SPECIFICATIONS INDICATE MINIMUM CONSTRUCTION STANDARDS, BUT SHALL INCLUDE ANY WORK INDICATED BY SUBMITTALS. THE CONTRACTOR SHALL FOLLOW ALL LAWS, CODES, RULES, OR REGULATIONS BEARING ON WORK. THE CONTRACTOR SHALL EXECUTE WORK IN ACCORDANCE WITH SUCH WITHOUT INCREASED COST TO THE OWNER, BUT NOT UNTIL THE REFERRED SUCH REQUIREMENTS BY THE ARCHITECT.
11. THE CONTRACTORS SHALL SECURE AND PAY FOR THE NECESSARY PERMITS AND CERTIFICATES OF INSPECTION FOR THEIR TRADE. KEEP RECORD OF ALL PERMITS AND INSPECTIONS AND PROVIDE COPIES TO THE ENGINEER WITH REQUEST FOR FINAL INSPECTION.
12. THIS CONTRACTOR SHALL WARRANT THAT THE COMPLETE SYSTEMS INSTALLED UNDER THIS CONTRACT SHALL BE FREE OF DEFECTS IN WORKMANSHIP AND MATERIAL FOR A PERIOD OF ONE (1) YEAR FROM THE DATE OF SUBSTANTIAL COMPLETION BY THE ARCHITECT. IF DEFECTS OCCUR DURING THE ONE YEAR GUARANTEE PERIOD, THIS CONTRACTOR SHALL REPAIR OR REPLACE THE DEFECTS AT NO EXPENSE TO THE OWNER AND TO THE SATISFACTION OF THE OWNER AND ENGINEER.
13. PROVIDE 3/4" CONCRETE BASES FOR ALL FLOOR MOUNTED EQUIPMENT UNLESS SHOWN OR NOTED OTHERWISE. PROVIDE 6X6 WELDED WIRE FABRIC REINFORCING MINIMUM OR AS REQUIRED BY THE STRUCTURAL ENGINEER.
14. ADEQUATELY PROTECT EQUIPMENT FROM DAMAGE AFTER DELIVERY TO THE JOBSITE. COVER WITH HEAVY POLYETHYLENE PLASTIC. ELEVATE EQUIPMENT WHEN THERE IS DANGER OF WATER DAMAGE. EQUIPMENT DAMAGED WILL BE REPAIRED.
15. ANY SCRATCHES TO FACTORY FINISHES SHALL BE TOUCHED UP USING FACTORY SUPPLIED PAINT BEFORE FINAL ACCEPTANCE. IF EXTENSIVE DAMAGE TO FACTORY FINISHES HAS OCCURRED, EQUIPMENT PANELS SHALL BE REPLACED TO THE SATISFACTION OF THE ENGINEER.
16. INSTALL ALL EQUIPMENT IN STRICT ACCORDANCE WITH THE MANUFACTURER'S RECOMMENDATIONS AND THE SHOP DRAWINGS REVIEWED BY THE ENGINEER. THE COMPLETE INSTALLATION SHALL FUNCTION AS DESIGNED AND INTENDED WITH RESPECT TO EFFICIENCY, CAPACITY, AND NOISE LEVEL.
- CONDUIT OR FIXTURES WILL NOT BE ACCEPTABLE.
17. CONTRACTOR SHALL PERFORM INITIAL START-UP OF THE SYSTEMS AND PROVIDE NECESSARY SUPERVISION AND LABOR TO MAKE THE FIRST SEASONAL CHANGE-OVER OF SYSTEMS. OWNER'S PERSONNEL SHALL BE PRESENT DURING CHANGE-OVER.
18. THE CONTRACTOR'S RESPONSIBILITY TO PROVIDE MATERIALS AND TRIM WHICH FIT PROPERLY THE TYPES OF CEILING, WALL, OR FLOOR FINISHES ACTUALLY INSTALLED. MODEL NUMBERS IN SPECIFICATIONS OR SHOWN ON DRAWINGS ARE NOT INTENDED TO DESIGNATE THE REQUIRED TRIM.
19. CONTRACTOR SHALL PROVIDE ALL MISCELLANEOUS STEEL, ETC., FOR THE PROPER INSTALLATION OF THE SYSTEMS SPECIFIED. THE SCOPE OF THE WORK SHALL BE PERFORMED CONNECTING TO BUILDING STRUCTURE SHALL BE DONE IN A MANNER ACCEPTED BY THE STRUCTURAL ENGINEER. WHEN BAR JOISTS ARE USED FOR STEEL CONSTRUCTION, ITEMS SHALL BE INSTALLED FROM ANGLE FROM SPANNING THE TOP CHORD OF THE JOISTS.
20. PERIODICALLY DURING CONSTRUCTION AND PRIOR TO OWNER ACCEPTANCE OF THE BUILDING, CONTRACTOR SHALL REMOVE AND DISMISSES AND DISPOSE OF ALL PACKING MATERIAL AND DEBRIS.
21. BEFORE SUBMITTING A BID, THE CONTRACTOR SHALL VISIT THE ACTUAL LOCATION OF THE JOB AND SHALL FULLY UNDERSTAND THE SCOPE OF THE WORK TO BE PERFORMED AND THE CONDITIONS UNDER WHICH IT IS TO BE PERFORMED. IN NO CASE SHALL ADDITIONAL COMPENSATION BE GRANTED WHEN EXISTING CONDITIONS COULD REASONABLY BE DETECTED.
22. ANY WORK THAT WILL AFFECT THE BUILDING OCCUPANTS IN ANY WAY SHALL BE COORDINATED WITH THAT TENANT. SUCH WORK SHALL BE PERFORMED IN A SATISFACTORY MANNER TO THOSE AFFECTED.
23. LOCATE AND MARK ALL KNOWN UTILITIES PRIOR TO PROCEEDING WITH WORK. PROCEED WITH CAUTION SINCE UNMARKED UTILITIES MAY EXIST ON SITE. SHOULD ANY EXISTING UTILITIES BE DAMAGED OR DISRUPTED, IMMEDIATELY NOTIFY OWNER AND REPAIR TO EXISTING CONDITIONS.
24. THE CONTRACTOR SHALL CLOSELY COORDINATE UTILITY DOWNTIME WITH THE OWNER AND ARCHITECT GIVING A MINIMUM FOURTEEN DAY NOTICE PRIOR TO DOWNTIME. DOWNTIMES ARE TO BE HELD TO A MINIMUM WITH THE OWNER BEING NOTIFIED AS TO THE EXTENT AND DURATION. WORK SHALL BE PERFORMED ONLY AFTER APPROVAL BY THE OWNER.
25. THE ELECTRICAL CONTRACTOR SHALL PROVIDE ALL CONDUIT AND WIRING AND SHALL CONNECT COMPLETE AND READY FOR OPERATION ALL ELECTRICAL MOTORS AND EQUIPMENT IN THE OTHER CONTRACTS. THE OTHER CONTRACTORS SHALL FURNISH TO THE ELECTRICAL CONTRACTOR SWITCHES, ELECTRICAL CONTROLS AND OTHER ACCESSORIES REQUIRED FOR INSTALLATION OF MOTORS, EQUIPMENT, ETC. SHALL BE MADE BY THE CONTRACTOR FURNISHING THE EQUIPMENT, UNLESS OTHERWISE INDICATED.
26. UNLESS INTEGRATED TO THE EQUIPMENT SUPPLIED OR NOTED OTHERWISE, THE ELECTRICAL CONTRACTOR SHALL PROVIDE DISCONNECT SWITCHES, MOTOR STARTERS AND VARIABLE FREQUENCY DRIVES AS REQUIRED BY CODE AND/OR AS SHOWN ON THE DRAWINGS. THE CONTRACTORS RESPONSIBLE FOR INSTALLING THE ASSOCIATED EQUIPMENT SHALL COORDINATE WITH THE ELECTRICAL CONTRACTOR TO ENSURE DEVICES OF THE PROPER SIZE ARE FURNISHED. FURTHER, THE OTHER TRADES SHALL FURNISH ALL ELECTRIC CONTROL ITEMS NEEDED TO THE ELECTRICAL CONTRACTOR FOR INSTALLATION AND CONNECTION.
27. THE CONTRACTOR SHALL PROVIDE OPENINGS AND CHASES, CUTTING AND PATCHING, EXCAVATION AND BACKFILLING, AND PIPE SLEEVES AS NEEDED FOR PROPER EXECUTION OF THE WORK.
28. SLEEVES ARE REQUIRED IN ALL PENETRATIONS THROUGH NEW EXTERIOR WALLS, MASONRY WALLS, FLOORS AND FIRE RATED GYPSUM BOARD WALLS. SLEEVES SHALL BE EITHER SCHEDULE 5 STEEL PIPE, EMT CONDUIT, FIBER FABRICATED FROM MINIMUM 16 GAUGE STEEL WITH 2" OVERLAP AT THE SEAMS, OR AS REQUIRED BY LISTED FIRE STOPPING SYSTEM. SLEEVES WILL NOT BE REQUIRED IN EXISTING WALL PENETRATIONS OF MASONRY CONSTRUCTION WHEN SUCH OPENINGS ARE MADE BY "CORE-DRILLING"; SPACE BETWEEN THE SLEEVES AND EXISTING WALLS SHALL BE SEALED USING LINK SEALS. SPACE BETWEEN SLEEVES AND PIPE IN OTHER WALL CONSTRUCTION SHALL BE THE DIAMETER NECESSARY TO PROVIDE THE CLEARANCE REQUIRED BY THE LISTED FIRE STOPPING METHOD CHOSEN BY THE CONTRACTOR.
29. ALL SIDEWALKS, STREETS, OR ALLEY SURFACES THAT ARE BROKEN IN CONNECTION WITH THIS CONTRACT SHALL BE REPAIRED TO THE SATISFACTION OF THE ARCHITECT.
30. PROVIDE FIRE STOPPING TO MAINTAIN THE FIRE RATING OF WALLS, FLOORS, CEILINGS OR OTHER BUILDING COMPONENT. FIRE STOPPING SHALL BE COMPOSED OF COMPATIBLE COMPONENTS TO THE SLEEVES FORMING OPENINGS AND THE ITEMS PENETRATING THE FIRE STOPPING. AS DEMONSTRATED BY THE FIRE STOPPING MANUFACTURER BASED ON TESTING AND FIELD EXPERIENCE. FIRESTOP TESTS FOR INSTALLATION MUST MEET REQUIREMENTS OF ASTM E-814, UL STANDARD 1479 OR UL STANDARD 2079 TESTED ASSEMBLIES THAT PROVIDE A FIRE RATING EQUAL TO THAT OF CONSTRUCTION BEING PENETRATED.

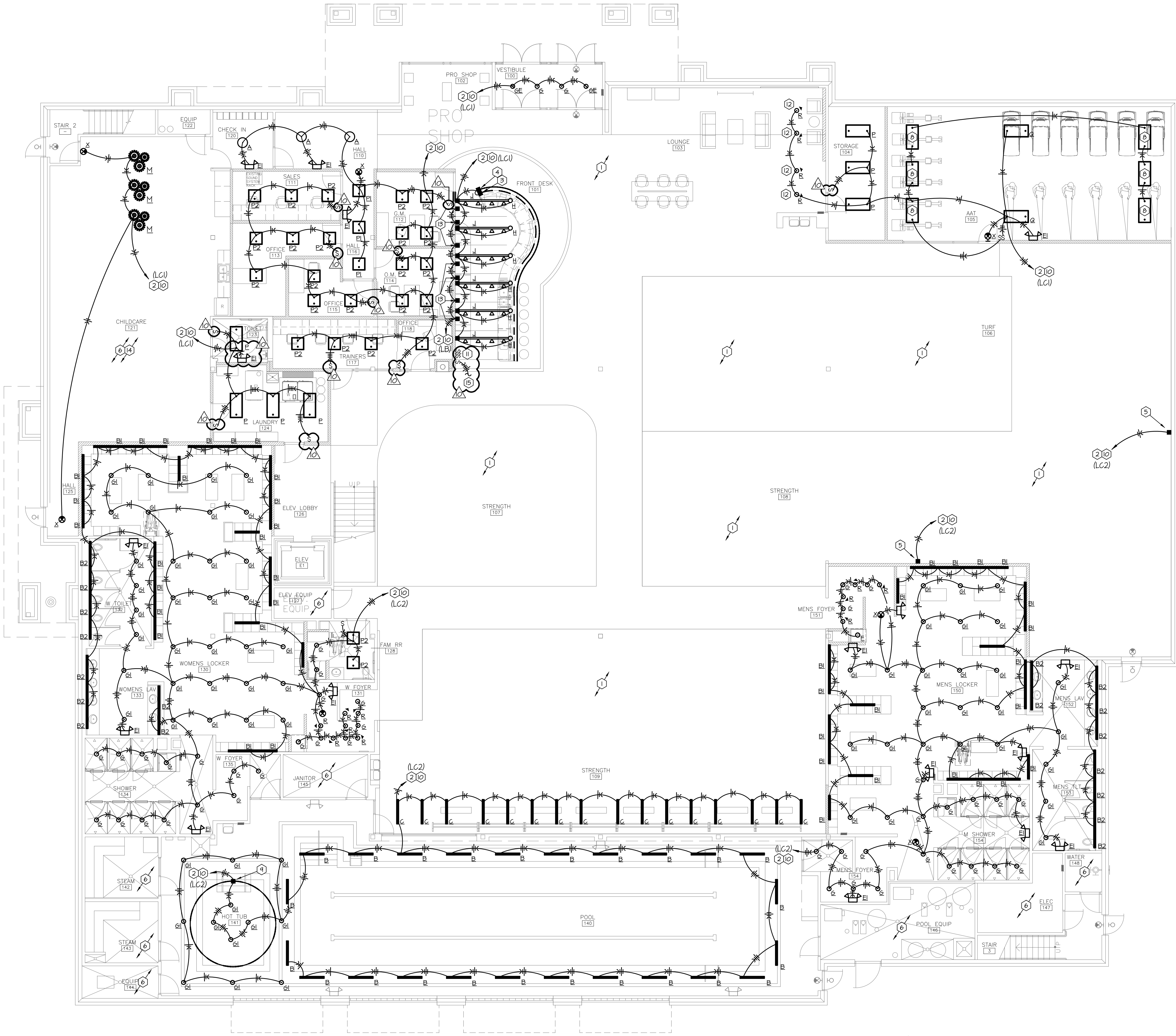
ETC. ANY ABNORMAL NOISE CAUSED BY RATTLING EQUIPMENT.

ELECTRICAL REQUIREMENTS

- THE ELECTRICAL CONTRACTOR SHALL PROVIDE ALL CONDUIT AND WIRING AND SHALL CONNECT COMPLETE AND READY FOR OPERATION ALL ELECTRICAL MOTORS AND EQUIPMENT FOR OTHER TRADES AS SHOWN ON DRAWINGS AND SPECIFICATIONS REQUIRED FOR COMPLETE AND OPERATING SYSTEMS.
2. DOMESTIC WATER PUMPS: THE ELECTRICAL CONTRACTOR SHALL PROVIDE ALL CONDUIT, WIRING AND CONNECTIONS TO STARTER/CONTROLS. THE ELECTRICAL CONTRACTOR SHALL MAKE ALL REQUIRED ELECTRICAL CONNECTIONS.
3. SINGLE PHASE EXHAUST FANS: THE MC SHALL PROVIDE THE SINGLE PHASE EXHAUST FANS AND ALL ELECTRICAL CONNECTIONS. THE ELECTRICAL CONTRACTOR SHALL PROVIDE THE LINE VOLTAGE THERMOSTAT WHERE INDICATED. THE ELECTRICAL CONTRACTOR SHALL MAKE ALL REQUIRED ELECTRICAL CONNECTIONS.
4. TEMPERATURE CONTROLS: THE TEMPERATURE CONTROL SUPPLIER WILL PROVIDE ALL LOW VOLTAGE CONTROL WIRING. THE EC SHALL PROVIDE INDICATED 120 VOLT POWER SUPPLIES AND CONNECTIONS. THE EC SHALL PROVIDE ALL ROUGH-IN BOXES AND CONDUITS FOR THERMOSTAT INDICATED UNDER THE DIRECT SUPERVISION OF THE TEMPERATURE CONTROL CONTRACTOR. COORDINATE ALL REQUIREMENTS WITH THE TEMPERATURE CONTROL CONTRACTOR.
5. FIRE ALARM: THE FIRE ALARM SUPPLIER/CONTRACTOR WILL PROVIDE ALL LOW VOLTAGE CONTROL WIRING. THE EC SHALL PROVIDE ALL 120 VOLT POWER SUPPLIES AND CONNECTIONS. THE EC SHALL PROVIDE ALL ROUGH-IN BOXES AND CONDUITS FOR DEVICES AS INDICATED UNDER THE DIRECT SUPERVISION OF THE FIRE ALARM CONTRACTOR.
6. STRUCTURED CABLE: THE ELECTRICAL CONTRACTOR SHALL MAKE ALL REQUIREMENTS WITH THE FIRE ALARM CONTRACTOR.
7. STRUCTURED CABLEING SYSTEM: THE STRUCTURED CABLEING SYSTEM SUPPLIER/CONTRACTOR WILL PROVIDE ALL LOW VOLTAGE CONTROL WIRING. THE EC SHALL PROVIDE ALL 120 VOLT POWER SUPPLIES AND CONNECTIONS. THE EC SHALL PROVIDE ALL ROUGH-IN BOXES AND CONDUITS FOR DEVICES AS INDICATED UNDER THE DIRECT SUPERVISION OF THE STRUCTURED CABLEING SYSTEM CONTRACTOR. COORDINATE ALL REQUIREMENTS WITH THE STRUCTURED CABLEING CONTRACTOR.
7. WASHERS AND DRYERS: THE ELECTRICAL CONTRACTOR SHALL VERIFY NECA CONFIGURATIONS OF CORD AND PLUGS SETS FOR BOTH WASHERS AND DRYERS PROVIDED. THE ELECTRICAL CONTRACTOR SHALL INSTALL CORD AND PLUG KIT FOR EACH WASHER AND DRYER PROVIDED. THE ELECTRICAL CONTRACTOR SHALL MAKE ALL REQUIRED ELECTRICAL CONNECTIONS.
8. HAND DRYERS: THE ELECTRICAL CONTRACTOR SHALL VERIFY ROUGH-IN REQUIREMENTS FOR THE DRYERS PROVIDED. THE ELECTRICAL CONTRACTOR SHALL MAKE ALL REQUIRED ELECTRICAL CONNECTIONS.
9. BUILDING MOUNTED SIGN: THE ELECTRICAL CONTRACTOR SHALL PROVIDE ROUGH-IN AS REQUIRED BY ACTUAL MANUFACTURER. THE ELECTRICAL CONTRACTOR SHALL MAKE ALL REQUIRED ELECTRICAL CONNECTIONS.
10. THE CONTRACTOR SHALL PAY ANY AND ALL REQUIRED UTILITY SERVICE FEES ASSOCIATED WITH THIS PROJECT DIRECTLY TO THE UTILITY COMPANY.
11. PROVIDE WIRE AS SPECIFIED AND CIRCUITING AS SHOWN ON THE DRAWINGS. POWER WIRES AND CABLES SHALL BE CODE TYPE THIN OR THIN AND MINIMUM #12 AWG, UNLESS NOTED OTHERWISE. POWER WIRES SHALL BE 100% COPPER. SMALLER SHALL BE ANNEALED SOFT COPPER, SOLID CONSTRUCTION. ALL POWER WIRES AND CABLES 8 AWG AND LARGER SHALL BE ANNEALED SOFT COPPER, COMPRESSED STRAND CONSTRUCTION.
12. AT THE CONTRACTOR'S OPTION, WIRES AND CABLES #6 AND LARGER MAY BE ALCAN "STABLOY" OR SOUTHWIRE "TRIPLE E" WITH EMT CONDUIT. THE ELECTRICAL CONTRACTOR SHALL MARKED "L1" NOTIFY 600V XHHW-2 (UL) OR "AL TRIPLE E 600V XHHW-2." STABLOY WIRE AND CONDUIT SIZES INDICATED ON PLANS ARE BASED ON COPPER. IF ALUMINUM WIRE AND CONDUIT ARE USED, IT IS THE CONTRACTOR'S RESPONSIBILITY TO VERIFY THE ELECTRICAL CONTRACTOR TO SIZE THE CONDUCTORS AND CONDUIT MEETING NEC REQUIREMENTS. ALL CIRCUITS FEEDING MECHANICAL EQUIPMENT ARE SIZED BASED ON COPPER WIRES, AND SHALL BE INSTALLED USING COPPER FEEDERS ONLY.
13. COLOR CODING FOR 120/208 VOLT SYSTEMS SHALL BE BLACK/BLUE/RED FOR PHASE CONDUCTORS, WHITE FOR NEUTRAL AND GREEN FOR GROUNDING CONDUCTORS. COLOR CODING FOR 277/480 VOLT SYSTEMS SHALL BE BROWN/ORANGE/YELLOW FOR PHASE CONDUCTORS, GREY/WHITE FOR NEUTRAL AND GREEN FOR GROUNDING CONDUCTORS.
14. INTERIOR CONDUIT SHALL BE EMT. PROVIDE SETSCREW COUPLINGS AND FITTINGS FOR NECA 1 INSTALLATIONS AND COMPRESSED COUPLINGS AND FITTINGS FOR NECA 3 INSTALLATIONS AS A MINIMUM. ALL CONDUIT SHALL BE RUN PERPENDICULAR OR PERPENDICULAR TO THE BUILDING SURFACE. CONDUIT SHALL BE CONCEALED IN WALLS, OVERHEAD CONDUIT SHALL BE CONCEALED EXCEPT IN ROOMS WITHOUT CEILINGS.
15. AT THE CONTRACTOR'S OPTION INTERIOR BRANCH CIRCUITS MAY BE TYPE MC CABLE WITH LISTED FITTINGS AND COUPLERS OF EMT CONDUIT AND CONDUIT FITTINGS. CONDUIT TO PANELS WILL BE MADE WITH EMT CONDUIT (NO MC CONNECTIONS TO PANEL CANS). COLOR CODING SHALL BE MAINTAINED.
16. ALL POWER WIRES AND CABLES SHALL BE MINIMUM #12 AWG, UNLESS NOTED OTHERWISE. WIRE SHALL BE CODE TYPE THIN OR THIN, UNLESS NOTED OTHERWISE.
17. EACH 120 VOLT OUTLET CIRCUIT SHALL BE PROVIDED WITH DEDICATED NEUTRAL CONDUCTOR. THREE PHASE, FOUR WIRE HOMERUNS OF 120 VOLT BRANCH CIRCUITS WILL NOT BE ACCEPTED.
18. EACH LIGHT FIXTURE SHALL BE PROVIDED WITH A DEDICATED NEUTRAL CONDUCTOR FROM A JUNCTION BOX. THE PRACTICE OF "DAISY-CHAINING" FROM FIXTURE TO FIXTURE WILL NOT BE ACCEPTED. MULTIPLE FIXTURE WHIPS FROM A SINGLE BOX IS ACCEPTABLE.
19. PROVIDE CONDUITS AND RACEWAYS, ELECTRICAL PULL JUNCTION AND DEVICE BOXES AS SPECIFIED AND SHOWN ON THE DRAWINGS, AS WELL AS THOSE REQUIRED FOR A COMPLETE AND CODE ACCEPTABLE INSTALLATION.
20. THE ELECTRICAL CONTRACTOR SHALL PROVIDE ROUGH-IN BOXES AND 1/2" CONDUIT FOR THERMOSTATS UNDER THE SUPERVISION OF THE TEMPERATURE CONTROLS INSTALLATION CONTRACTOR.
21. PROVIDE ENERGY EFFICIENT CLASS 7400 DRY-TYPE TRANSFORMERS, UNLESS NOTED OTHERWISE. THREE-PHASE TRANSFORMERS SHALL BE DELTA PRIMARY AND 4-WIRE, WYE SECONDARY. TRANSFORMERS SHALL HAVE A MINIMUM OF 4.25% FULL CAPACITY PRIMARY TAPS. TRANSFORMERS SHALL BE 150° C. TEMPERATURE RISE ABOVE 40° C. AMBIENT. ALL INSULATING MATERIALS TO BE IN ACCORDANCE WITH NEMA ST20 AND UL 220° C. UL COMPONENT RECOGNIZED INSULATION SYSTEM.
- PHASE, 4-WIRE PANELBOARDS WITH CIRCUIT BREAKERS SHALL BE SCHEDULED. CIRCUIT BREAKERS SHALL BE BOLT-ON THERMOMAGNETIC MOLDED CASE TYPE. CIRCUIT FAULT BREAKERS SHALL BE PROVIDED FOR ALL CIRCUITS AS REQUIRED IN SECTION 210.12 OF THE NEC.
23. 277/480 VOLT PANELBOARDS: PROVIDE THE FOLLOWING SQUARE D TYPE NR-11 PHASE, 4-WIRE PANELBOARDS WITH CIRCUIT BREAKERS AS SCHEDULED. CIRCUIT BREAKERS SHALL BE BOLT-ON THERMOMAGNETIC MOLDED CASE TYPE.
24. INSIDE EACH PANEL DOOR, PROVIDE AN APPROVED TYPE WRITTEN SCHEDULE CARD SHOWING WHAT EACH CIRCUIT FEEDS.
25. PROVIDE ENGRAVED, WHITE ON BLACK, LAMINATED PLASTIC PLATE, MECHANICALLY ATTACHED LABELS ON ALL PANELS. THERMOMAGNETIC MOLDED CASE TYPE CIRCUIT BREAKERS, ETC. WHERE PANELS, ETC., OCCUR IN FINISHED ROOMS, LABEL SHALL BE ON INSIDE OF THE DOOR. LABELS SHALL MATCH DISCRETELY WITH THE PANELS ON THE PANEL.
26. PROVIDE 20 AMP, HEAVY DUTY COMMERCIAL WIRING DEVICES AS SHOWN ON THE DRAWINGS. DEVICE AND COVERPLATE COLORS SHALL BE AS DIRECTED BY THE ARCHITECT.
27. OVERPLATES SHALL BE NYLON. GROUND FAULT INTERRUPTER RECEPTACLES SHALL BE PROVIDED IN ALL AREAS AS REQUIRED IN SECTION 210.8 OF THE LATEST ADOPTED VERSION OF THE NEC. WEATHER RESISTANT RECEPTACLES SHALL BE PROVIDED IN ALL AREAS AS REQUIRED IN SECTION 406.3 OF THE LATEST ADOPTED VERSION OF THE NEC WITH EXTRA DUTY WEATHERPROOF IN USE COVER. TAMPER RESISTANT RECEPTACLES SHALL BE PROVIDED AT ALL LOCATIONS AS REQUIRED BY SECTION 406.11 (DWELLING UNITS) AND SECTION 517 (PEDIATRIC AREAS) OF THE LATEST ADOPTED VERSION OF THE NEC.
27. TIME SWITCHES SHALL BE EZ CONTROLS, OR APPROVED EQUIVALENT. PROVIDE 24 HOUR TIME SWITCHES ON EACH TIME SWITCH WITH 25 AMP RATED CONTROLS. TIME CLOCKS SHALL BE BASED ON SOLID STATE TECHNOLOGY WITH 10-YEAR MEMORY RETENTION AND RECHARGEABLE BATTERY CARRYOVER.
28. PROVIDE HEAVY-DUTY SAFETY SWITCHES AS INDICATED ON THE PLANS AND AS SPECIFIED. PROVIDE THE APPROPRIATE NEMA ENCLOSURE RATING FOR THE INSTALLATION LOCATION. ALL MOTOR STARTERS SHALL BE NEMA RATED AND UL LISTED. PROVIDE FUSIBLE DEVICES AS SHOWN ON THE DRAWINGS.
29. PROVIDE HEAVY DUTY MAGNETIC MOTOR STARTER, AND MANUAL MOTOR CONTROLLERS AS INDICATED ON THE PLANS AND AS SPECIFIED. PROVIDE THE APPROPRIATE NEMA ENCLOSURE RATING FOR THE INSTALLATION LOCATION. ALL MOTOR STARTERS SHALL BE NEMA RATED AND UL LISTED. CONTROLLERS SHALL BE FURNISHED WITH DEDICATED ENCLOSURES, OR AS COMBINATION/DISCONNECT CONTROLLERS AS INDICATED ON THE PLANS. PROVIDE AUXILIARY CONTACTS AND OTHER ACCESSORIES AS NEEDED FOR PROPER CONTROL AS DIRECTED BY OTHER TRADES.
30. PROVIDE LIGHT FIXTURES AS SPECIFIED. MATERIAL, EQUIPMENT OR SERVICES NECESSARY TO COMPLETE THE INSTALLATION OF THESE FIXTURES, BUT NOT SPECIFICALLY MENTIONED SHALL BE FURNISHED AS THOUGH SPECIFIED.
31. EMERGENCY FIXTURES SHALL BE PROVIDED WITH BATTERY BACKUP DRIVEN TO ILLUMINATE LAMPS FOR A MINIMUM 90 MINUTES. DRIVERS SHALL BE COLD-WEATHER RATED WHEN INSTALLED OUTSIDE THE BUILDING INSULATION.
32. PROPERLY SUPPORT AND ALIGN ALL FIXTURES AND PROVIDE ALL NECESSARY STEEL SHAPES FOR SUPPORT OF THE FIXTURES. FIXTURES RECESSED IN CEILINGS SHALL BE SECURELY CONNECTED TO THE CEILING. FOR FIXTURES WEIGHING LESS THAN 50 POUNDS, PROVIDE A MINIMUM OF TWO (2) 12 GAUGE WIRES WHICH ARE CONNECTED TO THE STRUCTURE ABOVE. FIXTURES WEIGHING MORE THAN 50 POUNDS SHALL BE SUPPORTED DIRECTLY FROM THE STRUCTURE ABOVE.
33. VERIFY ALL CEILING SYSTEMS AND COORDINATE FIXTURE TYPE AND ACCESSORIES PRIOR TO ORDERING FIXTURES. COORDINATE AND COOPERATE WITH CEILING INSTALLER IN REFERS TO THE LOCATION AND INSTALLATION OF LIGHT FIXTURES.
34. ALL WALL MOUNTED FIXTURES SHALL BE COORDINATED WITH THE ARCHITECTURAL FEATURES OF THE BUILDING, WHERE SPECIFIC ELEVATIONS OR DIMENSIONS ARE NOT INDICATED, VERIFY THE CORRECT LOCATION WITH THE ARCHITECT PRIOR TO BEGINNING ANY WORK.
35. AT THE TIME OF SUBSTANTIAL COMPLETION, AIM ALL TRACK LIGHTS, FLOOD LIGHTS, SPOT LIGHTS, ETC. PER THE ARCHITECT'S AND/OR OWNER'S DIRECTION. PROVIDE ALL SCAFFOLDS, LIFTS ETC. AS REQUIRED.

- 12/20/28 W/OT PANELBOARDS; PROVIDE SQUARE D TYPE NO. 3 PHASE, 4-WIRE PANELBOARDS WITH CIRCUIT BREAKERS AS SCHEDULED. CIRCUIT BREAKERS SHALL BE BOLT-ON THE METRIC MODULAR FRAME. ALL CIRCUITS AND SUBCIRCUITS SHALL BE PROVIDED FOR ALL CIRCUITS AS REQUIRED IN SECTION 210.12 OF THE NEC.
13. NAME PLATES SHALL BE PROVIDED FOR THE FOLLOWING SQUARE D TYPE NF, 2 PHASE, 4-WIRE PANELBOARDS WITH CIRCUIT BREAKERS AS SCHEDULED. CIRCUIT BREAKERS SHALL BE BOLT-ON THERMAL MAGNETIC, MOLDED CASE TYPE.
14. INDENTED PANELS SHALL BE PROVIDED ON AN ADDITIONAL TYPEWRITTEN SCHEDULE CARD SHOWING WHAT EACH CIRCUIT FEEDS.
15. PROVIDE ENGRAVED, WHITE ON BLACK, LAMINATED PLASTIC PLATE WITH NUMBERED LABELS ON ALL PANELS, TRANSFORMERS, SAFETY SWITCHES, MOTOR STARTER, ETC WHERE PANELS, ECT., OCCUR IN FINISHED ROOMS. LABEL SHALL BE ON INSIDE OF THE DOOR. LABELS SHALL MATCH THE IDENTIFICATION SYSTEM TO BE USED.
16. PROVIDE 20 AMP, HEAVY DUTY COMMERCIAL WIRING DEVICES AS SHOWN ON THE DRAWINGS. DEVICE AND COVERPLATE COLORS SHALL BE AS DIRECTED BY THE ARCHITECT.
17. CIRCUIT BREAKERS SHALL BE PROVIDED IN THE MAIN ELECTRICAL INTERRUPTER RECEPTACLES SHALL BE PROVIDED IN ALL LOCATIONS AS REQUIRED IN SECTION 210.8 OF THE LATEST ADAPTED VERSION OF THE NEC. WEATHER RESISTANT REQUIREMENTS SHALL BE OBSERVED AS AN ADDITION AS REQUIRED IN SECTION 406.9 OF THE LATEST ADAPTED VERSION OF THE NEC WITH EXTRA DUTY WEATHERPROOF NUIS COVER, TAMPER RESISTANT RECEPTACLES SHALL BE PROVIDED IN ALL LOCATIONS AS SPECIFIED IN SECTION 406.11 (DWELLING UNITS) AND SECTION 517 (PEDIATRIC AREAS) OF THE LATEST ADAPTED VERSION OF THE NEC.
18. PROVIDE SAFETY SWITCHES SHALL BE EXISTING OR NEW APPROVED EQUAL OR EQUIVALENT OR NEW, MAINTAINED CONTACT TIME SWITCH WITH 25 AMP RATED CONTROLS. TIME CLOCKS SHALL BE BASED ON SOLID STATE TECHNOLOGY WITH 10-YEAR MECHANICAL LIFE EXPECTATION AND RECHARGEABLE BATTERY CARRYOVER.
19. PROVIDE HEAVY-DUTY SAFETY SWITCHES AS INDICATED ON THE PLANS AND AS SPECIFIED. PROVIDE THE APPROPRIATE NEMA ENCLOSURE RATING FOR THE INSTALLATION LOCATION. ALL SAFETY SWITCHES SHALL BE NEMA TYPE HD AND UL LISTED. PROVIDE FUSIBLE DEVICES AS SHOWN ON THE DRAWINGS.
20. PROVIDE HEAVY DUTY MAGNETIC MOTOR STARTER, AND MANUAL MOTOR CONTROLLERS AS INDICATED ON THE PLANS AND AS SPECIFIED. PROVIDE THE APPROPRIATE NEMA ENCLOSURE RATING FOR THE INSTALLATION LOCATION. ALL MOTOR CONTROLS SHALL BE UL LISTED. PROVIDE THE APPROPRIATE CONTROLLERS SHALL BE FURNISHED WITHIN DESIGNATED ENCLOSURES, OR AS COMBINATION/DISCONNECT CONTROLLERS AS INDICATED ON THE PLANS. PROVIDE ALL MOTOR CONTACTS SHALL BE UL LISTED. PROVIDE THE APPROPRIATE CONTROLS SHALL BE FURNISHED WITHIN DESIGNATED ENCLOSURES AS DIRECTED BY OTHER TRADES.
21. PROVIDE LIGHT FIXTURES AS SPECIFIED, MATERIAL, EQUIPMENT OR SERVICES NECESSARY TO COMPLETE THE INSTALLATION OF THE FIXTURES BUT NOT INCLUDING THE LIGHTLY MENTIONED SHALL BE FURNISHED AS SPECIALLY SPECIFIED.
22. EMERGENCY DISINFESTATION SHALL BE PROVIDED WITH BATTERY BACKUP TO ILLUMINATE LAMPS FOR A MINIMUM 90 MINUTES. DRINKING WATER SHALL BE PROVIDED WHEN INSTALLED OUTSIDE THE BUILDING INSULATION.
23. PROPERLY SUPPORT AND ALIGN ALL FIXTURES AND PROVIDE ALL NECESSARY CONNECTIONS TO THE STRUCTURE ABOVE THE FIXTURES. FIXTURES RECESSED IN CEILING SHALL BE SECURELY CONNECTED TO THE CEILING. FOR FIXTURES WEIGHING LESS THAN 56 POUNDS, PROVIDE A MINIMUM OF TWO (2) POINTS OF ATTACHMENT TO THE STRUCTURE ABOVE. FIXTURES WEIGHING MORE THAN 56 POUNDS SHALL BE SUPPORTED DIRECTLY FROM THE STRUCTURE ABOVE.
24. VERIFY ALL CEILING SYSTEMS AND COORDINATE FIXTURE TYPE AND ACCESSORIES PRIOR TO ORDERING FIXTURES. COORDINATE AND COOPERATE WITH CEILING INSTALLER IN REGARDS TO THE LOCATION AND INSTALLATION OF LIGHT FIXTURES.
25. ALL WALL MOUNTED FIXTURES SHALL BE COORDINATED WITH THE ARCHITECTURAL FEATURES OF THE BUILDING, WHERE SPECIFIC ELEVATIONS OR DIMENSIONS ARE NOT INDICATED, PROVIDE CORRECT LOCATION WITH THE ARCHITECT PRIOR TO BEGINNING ANY WORK.
26. AT THE TIME OF SUBSTANTIAL COMPLETION, AIM ALL TRACK LIGHTS, FLOOD LIGHTS, SPOT LIGHTS, ETC. PER THE ARCHITECT'S REQUIREMENTS. PROVIDE ALL NECESSARY SCAFFOLDS, LIFTS ETC. AS REQUIRED.

BBREVIATIONS



GENERAL NOTES:

A. THESE DRAWINGS ARE DIAGRAMMATIC IN NATURE AND INDICATE THE GENERAL EXTENT OF THE WORK. THE ELECTRICAL CONTRACTOR SHALL PROVIDE ALL PULL BOXES, JUNCTION BOXES AND INCIDENTAL MATERIALS AND LABOR FOR A COMPLETE AND FULLY FUNCTIONAL SYSTEM.

B. ELECTRICAL CONTRACTOR SHALL DERATE CONDUCTORS AS REQUIRED BY THE N.E.C. WHEN GROUPED IN COMMON RACEMAYS.

C. COORDINATE THE EXACT LIGHT FIXTURE LOCATIONS WITH THE ARCHITECTURAL DRAWINGS.

D. ALL WIRES RUN BELOW GRADE, IN CONCRETE THAT IS IN DIRECT CONTACT WITH THE EARTH, OR MASONRY THAT IS IN DIRECT CONTACT WITH THE EARTH SHALL BE RIGIDLY LOCATED LISTED.

E. PROVIDE SEPARATE NEUTRALS FOR DIMMING CIRCUITS.

F. ELECTRICAL CONTRACTOR SHALL ENSURE FULL OPERATION OF ALL EMERGENCY AND EXIT LIGHTING (EXISTING AND NEW). CONTRACTOR SHALL REPLACE EXISTING FIXTURES WITH DEFICIENCIES.

- PLAN NOTES:**
- REFERENCE MEZZANINE LEVEL LIGHTING PLAN FOR LIGHT FIXTURE LAYOUT.
 - ROUTE HOMERUN THROUGH LIGHTING CONTRACTOR NOTED IN PARENTHESIS. LIGHTING CONTRACTOR SHALL BE CONTROLLED BY TIMELOCK FOR AUTOMATIC SHUTDOWN. COORDINATE TIME SCHEDULE TO BE SET WITH OWNER.
 - PROVIDE JUNCTION BOX AND MAKE ELECTRICAL CONNECTION TO OWNER PROVIDED TAPE LIGHT. TAPE LIGHT TO BE MOUNTED TO THE UNDERSIDE OF THE DESK. CONTRACTOR SHALL COORDINATE ALL REQUIREMENTS FOR INSTALLATION WITH OWNER PRIOR TO FABRICATION AND INSTALLATION.
 - PROVIDE JUNCTION BOX AND MAKE ELECTRICAL CONNECTION TO OWNER PROVIDED TAPE LIGHT. TAPE LIGHT TO BE MOUNTED TO THE FRONT OF THE DESK. CONTRACTOR SHALL COORDINATE ALL REQUIREMENTS FOR INSTALLATION WITH OWNER PRIOR TO FABRICATION AND INSTALLATION.
 - PROVIDE JUNCTION BOX AND MAKE ELECTRICAL CONNECTION TO OWNER PROVIDED NEON SIGN. CONTRACTOR SHALL COORDINATE EXACT NUMBER OF CONNECTIONS, LOCATIONS AND MOUNTING HEIGHTS WITH OWNER PRIOR TO ROUGH-IN. PROVIDE ADDITIONAL CONNECTIONS AS REQUIRED.
 - EXISTING LIGHTING AND LIGHTING CONTROLS TO REMAIN IN THIS ROOM.
 - PROVIDE PENDANT MOUNTING KIT FOR EXIT SIGN. COORDINATE EXACT HEIGHT WITH STRUCTURE SO THAT EXIT SIGN IS VISIBLE FROM EACH DIRECTION.
 - INSTALL OWNER FURNISHED BLACK LIGHT FIXTURES. PROVIDE POWER AND CIRCUITING AS SHOWN. CONFIRM QUANTITY AND LOCATION WITH OWNER PRIOR TO INSTALLATION.
 - PROVIDE JUNCTION BOX ABOVE ACCESSIBLE CEILING AND MAKE ELECTRICAL CONNECTION TO OWNER PROVIDED TAPE LIGHT. TAPE LIGHT TO BE MOUNTED IN ARCHITECTURAL COVE. CONTRACTOR SHALL COORDINATE ALL REQUIREMENTS FOR INSTALLATION WITH OWNER PRIOR TO FABRICATION AND INSTALLATION.
 - ROUTE HOMERUN TO EXISTING LIGHTING CIRCUIT(S) AND PANELBOARD PREVIOUSLY FEEDING DEMOLISHED LIGHT FIXTURES IN THIS AREA. INTERCEPT CIRCUIT AS NECESSARY TO ROUTE THROUGH LIGHTING CONTRACTOR CONTROLLED BY TIMELOCK.
 - PROVIDE LIGHTING CONTRACTOR OVERRIDE SWITCHES. COORDINATE EXACT LOCATION WITH OWNER PRIOR TO INSTALLATION. REFERENCE LIGHTING CONTRACTOR DETAILS SHEET E3.1.
 - COORDINATE EXACT LOCATION AND DIRECTION OF DIRECTIONAL LIGHTING FIXTURE WITH OWNER PRIOR TO INSTALLATION.
 - PROVIDE JUNCTION BOXES AND POWER FOR INDIVIDUALLY ILLUMINATED LETTERED "GENESIS" SIGN BY OTHERS. REFERENCE ARCHITECTURAL PLANS FOR EXACT HEIGHT AND LOCATION.
 - ALL PROVIDED LIGHT SWITCHES IN CHILDCARE AREAS SHALL BE INSTALLED AT HEIGHTS OUT OF REACH OF CHILDREN. EXISTING SWITCHES WITHIN THE SPACE SHALL BE MODIFIED TO BE OUT OF REACH OF CHILDREN OR SHALL BE PROVIDED WITH CHILD PROOF LIGHT SWITCH GUARDS.
 - PROVIDE LUTRON DTV-VH 0-10V DIMMING SWITCH FOR MEZZANINE CARDIO LIGHTING. DIMMING SWITCH SHALL ONLY CONTROL THE FIXTURES DENOTED TO BE PROVIDED WITH 0-10V WIRING.

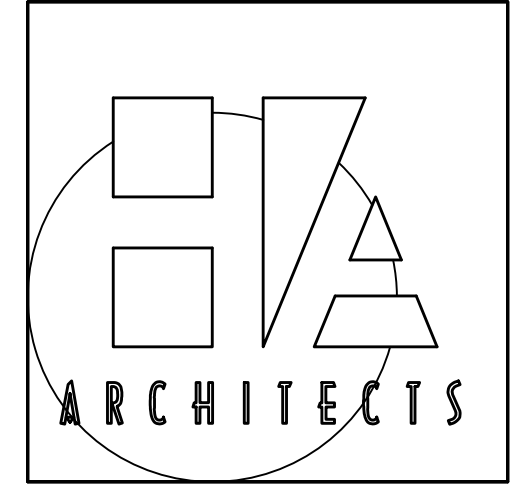
ALL LIGHT FIXTURE LOCATIONS AND MOUNTING HEIGHTS SHALL BE REVIEWED AND APPROVED BY THE OWNER PRIOR TO ROUGH-IN. CONTRACTOR SHALL BUILD TIME INTO THEIR BID TO MEET WITH THE OWNER AND MOCK UP LIGHT FIXTURE MOUNTING HEIGHTS AND LOCATIONS BEFORE ANY LIGHTS ARE INSTALLED.

ALL ELECTRICAL DEVICES LOCATED ON WALLS WITH MIRRORS SHALL BE APPROVED BY OWNER PRIOR TO ROUGH-IN. CONTRACTOR SHALL BE RESPONSIBLE FOR MEETING WITH THE OWNER TO DISCUSS ELECTRICAL DEVICE LOCATIONS WITH RESPECT TO MIRROR LOCATIONS.

ELECTRICAL CONTRACTOR SHALL DO NO ADDITIONAL WORK UNTIL THE EXECUTION OF A SIGNED CHANGE ORDER IS SIGNED BY THE OWNER. CONTRACTOR WILL RUN THE RISK OF NOT BEING PAID UNLESS ALL CHANGE ORDERS HAVE BEEN APPROVED AND SIGNED OFF BY THE OWNER.

ALL ELECTRICAL DEVICES AND COVER PLATE COVERS SHALL BE GRAY AND BE APPROVED BY THE OWNER PRIOR TO INSTALL/ORDER OF ELECTRICAL DEVICES. COORDINATE EXACT COLOR SELECTION WITH OWNER.

ELECTRICAL CONTRACTOR SHALL RE-CIRCUIT AS REQUIRED ANY ELECTRICAL DEVICE THAT IS NOT REMOVED BY THE DEMOLITION SCOPE OF WORK. CONTRACTOR TO EXTEND EXISTING CIRCUITS AS REQUIRED TO CONNECT EXISTING ELECTRICAL DEVICES TO NEW POWER. THIS SHALL INCLUDE BUT NOT BE LIMITED TO: RECEPTACLE DEVICES, LIGHT FIXTURES, MECHANICAL EQUIPMENT, SIGNAGE, EXTERIOR LIGHTING, TELECOM EQUIPMENT, HVAC CONTROLS, ETC.



HANNEY & ASSOCIATES, ARCHITECTS
1726 South Hillside, Wichita, Kansas, 67211
Phone (316) 683-8865
Fax (316) 684-1441

2021 GENESIS HEALTH CLUBS
900 N.E. Deerbrook Terrace
Lee's Summit, Missouri 64086



DRAWINGS ISSUED			
NO.	DATE	ITEM	ISSUED
10	6/11/21	CODE REVISION	
1	05/31/21	PLAN REVIEW	
8	05/21/21	REVIEW	
7	04/21/21	REVIEW	
6	04/20/21	REVIEW	
5	03/30/21	REVIEW	
4	03/05/21	REVIEW	
3	03/02/21	REVIEW	
2	1/12/21	REVIEW	
1	12/22/20	REVIEW	

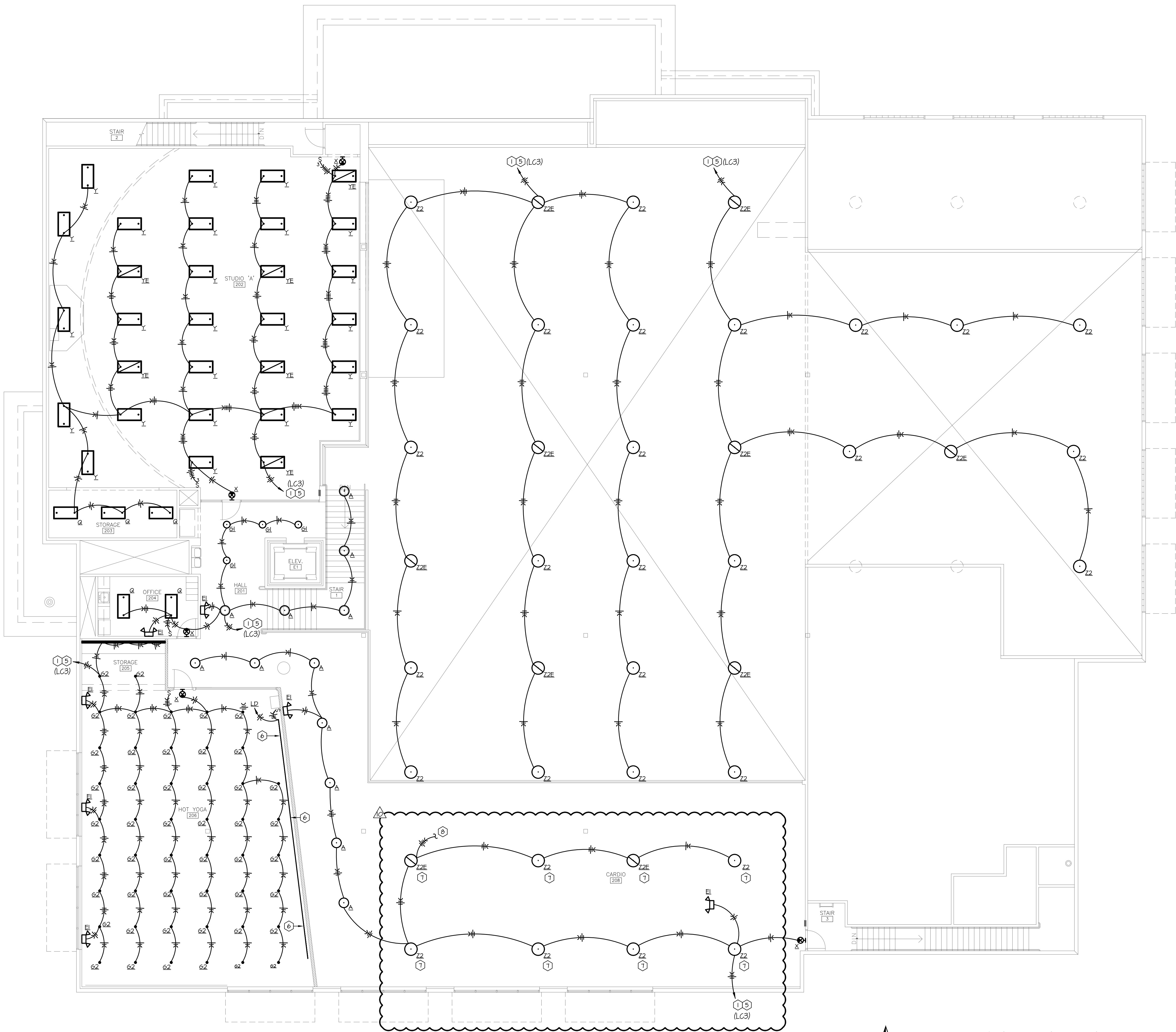
COMPUTER DRAWING

DATE: JANUARY, 2021
DRAWN BY: JH, CM
CHECKED BY: CS

H&B ENGINEERS
HOSS & BROWN
15902 Midland Drive
Shawnee, Kansas 66217
913.362.9090 | mail@h-b-engineers.com
H&B PROJECT NUMBER: 2110014
© Hoss & Brown Engineers 2021

01 First Floor Lighting Plan
Scale: 1/8"=1'-0"

SHEET
E1.1
OF - SHEETS



GENERAL NOTES:

- THESE DRAWINGS ARE DIAGRAMMATIC IN NATURE AND INDICATE THE GENERAL EXTENT OF THE WORK. THE ELECTRICAL CONTRACTOR SHALL PROVIDE ALL PULL BOXES, JUNCTION BOXES AND INCIDENTAL MATERIALS AND LABOR FOR A COMPLETE AND FULLY FUNCTIONAL SYSTEM.
- ELECTRICAL CONTRACTOR SHALL DERATE CONDUCTORS AS REQUIRED BY THE N.E.C. WHEN GROUPED IN COMMON RACEWAYS.
- COORDINATE THE EXACT LIGHT FIXTURE LOCATIONS WITH THE ARCHITECTURAL DRAWINGS.
- ALL WIRES RUN BELOW GRADE, IN CONCRETE THAT IS IN DIRECT CONTACT WITH THE EARTH, OR MASONRY THAT IS IN DIRECT CONTACT WITH THE EARTH SHALL BE RIGIDLY LOCATED LISTED.
- PROVIDE SEPARATE NEUTRALS FOR DIMMING CIRCUITS.
- ELECTRICAL CONTRACTOR SHALL ENSURE FULL OPERATION OF ALL EMERGENCY AND EXIT LIGHTING (EXISTING AND NEW). CONTRACTOR SHALL REPLACE EXISTING FIXTURES WITH DEFICIENCIES.

PLAN NOTES:

- ROUTE HOMERUN THROUGH LIGHTING CONTRACTOR NOTED IN PARENTHESIS.
- PROVIDE JUNCTION BOX AND MAKE ELECTRICAL CONNECTION TO MIRROR TAPE LIGHT. CONTRACTOR SHALL COORDINATE ALL REQUIREMENTS FOR INSTALLATION WITH OWNER PRIOR TO FABRICATION AND INSTALLATION.
- PROVIDE DUAL LEVEL SWITCHING FOR 2'X4' LIGHT FIXTURES IN THIS ROOM. EACH SWITCH SHALL CONTROL A SINGLE LAMP IN EACH OF THE FIXTURES. PROVIDE (2) ELECTRONIC PROGRAMMED START BALLASTS IN EACH FIXTURE FOR A COMPLETE INSTALLATION.
- INSTALL OWNER PROVIDED COVE LIGHT FIXTURES, COORDINATE CEILING DETAILS WITH ARCHITECT PRIOR TO INSTALLATION.
- ROUTE HOMERUN TO EXISTING LIGHTING CIRCUIT(S) AND PANELBOARD PREVIOUSLY FEEDING DEMOLISHED LIGHT FIXTURES IN THIS AREA. INTERCEPT CIRCUIT AS NECESSARY TO ROUTE THROUGH LIGHTING CONTRACTOR CONTROLLED BY TIMELOCK.
- PROVIDE JUNCTION BOX AND MAKE ELECTRICAL CONNECTION TO OWNER PROVIDED TAPE LIGHT. TAPE LIGHT TO BE MOUNTED TO THE UNDERSIDE OF THE BALLET BAR. CONTRACTOR SHALL COORDINATE ALL REQUIREMENTS FOR INSTALLATION WITH OWNER PRIOR TO FABRICATION AND INSTALLATION.
- PROVIDE 0-10V WIRING TO FIXTURE AND CIRCUIT TO 0-10V DIMMING SWITCH AT THE FRONT DESK.
- REFER TO PLAN NOTE #15 ON SHEET E1 FOR MORE INFORMATION.

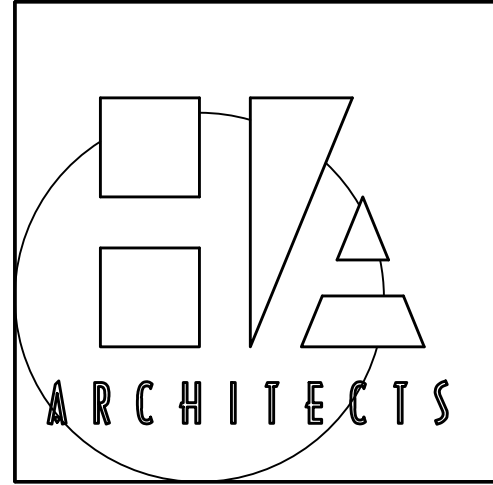
ALL LIGHT FIXTURE LOCATIONS AND MOUNTING HEIGHTS SHALL BE REVIEWED AND APPROVED BY THE OWNER PRIOR TO ROUGH-IN. CONTRACTOR SHALL BUILD TIME INTO THEIR BID TO MEET WITH THE OWNER AND MOCK UP LIGHT FIXTURE MOUNTING HEIGHTS AND LOCATIONS BEFORE ANY LIGHTS ARE INSTALLED.

ALL ELECTRICAL DEVICES LOCATED ON WALLS WITH MIRRORS SHALL BE APPROVED BY OWNER PRIOR TO ROUGH-IN. CONTRACTOR SHALL BE RESPONSIBLE FOR MEETING WITH THE OWNER TO DISCUSS ELECTRICAL DEVICE LOCATIONS WITH RESPECT TO MIRROR LOCATIONS.

ELECTRICAL CONTRACTOR SHALL DO NO ADDITIONAL WORK UNTIL THE EXECUTION OF A SIGNED CHANGE ORDER IS SIGNED BY THE OWNER. CONTRACTOR WILL RUN THE RISK OF NOT BEING PAID UNLESS ALL CHANGE ORDERS HAVE BEEN APPROVED AND SIGNED OFF BY THE OWNER.

ALL ELECTRICAL DEVICES AND COVER PLATE COVERS SHALL BE GRAY AND BE APPROVED BY THE OWNER PRIOR TO INSTALLATION. ORDER OF ELECTRICAL DEVICES, COORDINATE EXACT COLOR SELECTION WITH OWNER.

ELECTRICAL CONTRACTOR SHALL RE-CIRCUIT AS REQUIRED ANY ELECTRICAL DEVICE THAT IS NOT REMOVED BY THE DEMOLITION SCOPE OF WORK. CONTRACTOR TO EXTEND EXISTING CIRCUITS AS REQUIRED TO CONNECT EXISTING ELECTRICAL DEVICES TO NEW POWER. THIS SHALL INCLUDE BUT NOT BE LIMITED TO: RECEPTACLE DEVICES, LIGHT FIXTURES, MECHANICAL EQUIPMENT, SIGNAGE, EXTERIOR LIGHTING, TELECOM EQUIPMENT, HVAC CONTROLS, ETC.



HANNEY & ASSOCIATES, ARCHITECTS
1726 South Hillside, Wichita, Kansas, 67211
Phone (316) 683-8865
Fax (316) 684-1441

2021 GENESIS HEALTH CLUBS
900 N.E. Deerbrook Terrace
Lee's Summit, Missouri 64086

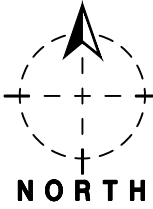


DRAWINGS ISSUED			
NO.	DATE	ITEM	ISSUED
10	6/11/21	CODE REVISION	
9	05/31/21	PLAN REVIEW	
8	05/21/21	REVIEW	
7	04/27/21	REVIEW	
6	04/20/21	REVIEW	
5	03/30/21	REVIEW	
4	03/05/21	REVIEW	
3	03/02/21	REVIEW	
2	1/12/21	REVIEW	
1	12/22/20	REVIEW	

COMPUTER DRAWING

DATE: JANUARY, 2021
DRAWN BY: JH, CM
CHECKED BY: CS

SHEET
E1.2
OF - SHEETS

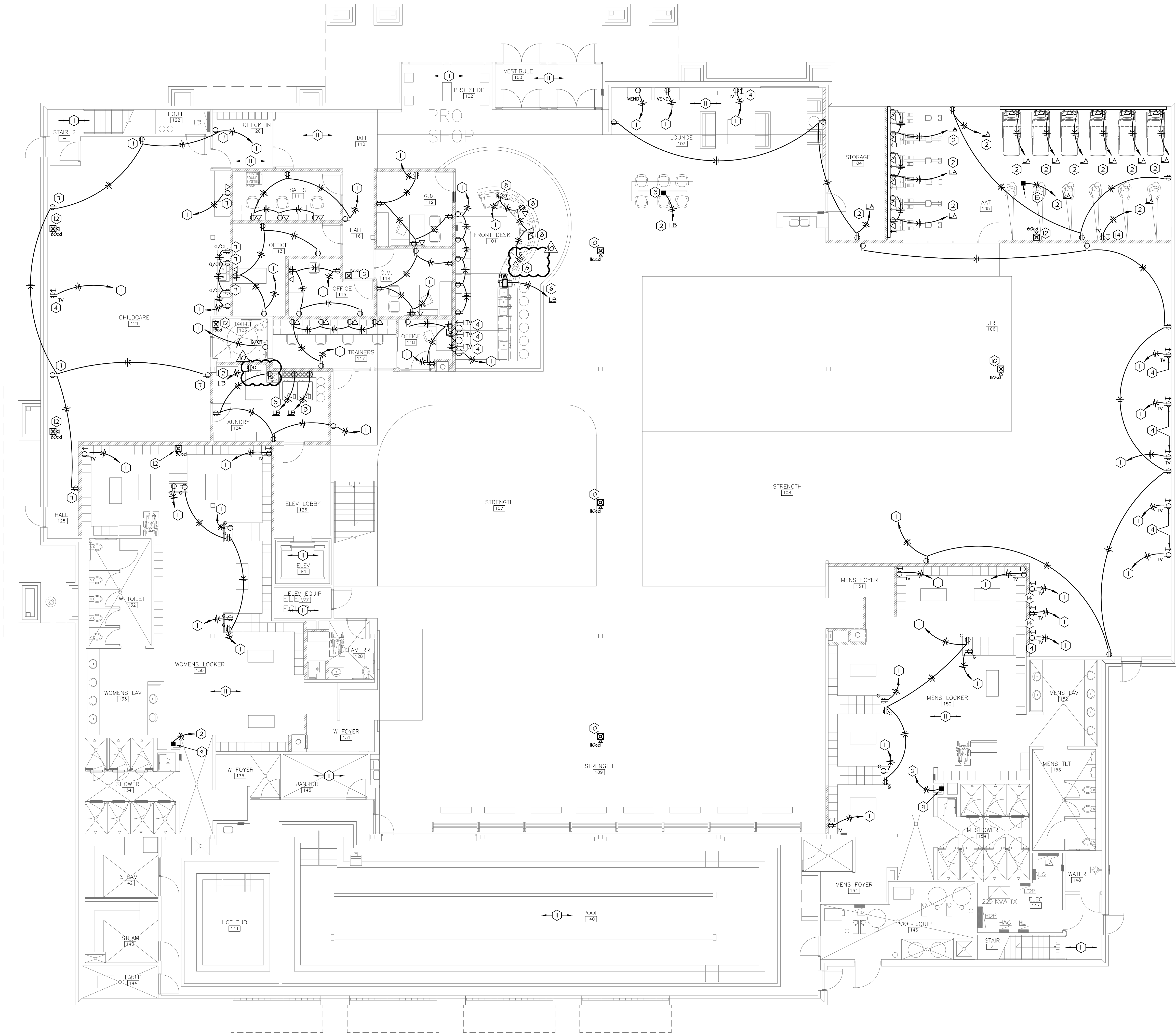


01

Second Floor Lighting Plan

Scale: 1/8"=1'-0"

H&B
HOSS & BROWN
15902 Midland Drive
Shawnee, Kansas 66217
913.362.9090 | mail@h-b.com
H&B PROJECT NUMBER: 2110014
© Hoss & Brown Engineers 2021



ELECTRICAL CONTRACTOR SHALL COORDINATE ALL ELECTRICAL REQUIREMENTS ASSOCIATED WITH STEAM ROOM WITH OWNER AND EQUIPMENT PROVIDED. REFER TO STEAM ROOM DIAGRAMS AND DETAILS LOCATED WITHIN ARCHITECTURAL SET OF DRAWINGS FOR ADDITIONAL INFORMATION.

THE DESIGN OF THE FIRE ALARM SYSTEM AND VOICE EVACUATION SYSTEM SHALL BE PROVIDED BY THE FIRE ALARM EQUIPMENT SUPPLIER. REFER TO FIRE ALARM SHOP DRAWINGS FOR LOCATIONS OF ALL ASSOCIATED FIRE ALARM SYSTEM AND DEVICES ASSOCIATED WITH THIS FACILITY. CONTRACTOR TO SUBMIT SHOP DRAWINGS TO FIRE MARSHAL FOR APPROVAL. THE FIRE ALARM EQUIPMENT SUPPLIER SHALL COORDINATE EXACT LOCATIONS OF ALL FIRE ALARM DEVICES WITH OWNER PRIOR TO SUBMITTAL TO FIRE MARSHAL. REFER TO ARCHITECTURAL CODE PLANS FOR BUILDING OCCUPANCY INFORMATION.

ELECTRICAL CONTRACTOR SHALL WALK THRU THE ENTIRE BUILDING WITH GENERAL CONTRACTOR AND OWNER TO VERIFY EXACT LOCATIONS AND QUANTITIES OF TV'S, FLOOR MOUNTED RECEPTACLES, AND NEON SIGNS. COORDINATE WALK-THRU WITH GENERAL CONTRACTOR AND OWNER.

ELECTRICAL CONTRACTOR SHALL DO NO ADDITIONAL WORK UNTIL THE EXECUTION OF A SIGNED CHANGE ORDER IS SIGNED BY THE OWNER. CONTRACTOR WILL RUN THE RISK OF NOT BEING PAID UNLESS ALL CHANGE ORDERS HAVE BEEN APPROVED AND SIGNED OFF BY THE OWNER.

CONTRACTOR TO PERFORM VOLTAGE DROP CALCULATIONS AS REQUIRED. CONTRACTOR TO UPSIZE WIRE AS REQUIRED FOR BRANCH CIRCUITS.

ALL ELECTRICAL DEVICES AND COVER PLATE COLORS SHALL BE GRAY AND BE APPROVED BY THE OWNER PRIOR TO INSTALL/ORDER OF ELECTRICAL DEVICES. COORDINATE EXACT COLOR SELECTION WITH OWNER.

ELECTRICAL CONTRACTOR SHALL PROVIDE AND INSTALL ALL CAT 6E CABLES ASSOCIATED WITH DATA DROPS. COORDINATE NUMBER OF DROPS WITH OWNER PRIOR TO ROUGH-IN. CAT 6E CABLE DROPS SHALL BE RUN FROM DATA DROPS SHOWN ON PLANS TO EQUIP ROOM 122. CONTRACTOR TO TERMINATION REQUIREMENTS INSIDE STORE ROOM WITH OWNER PRIOR TO BID. OWNER TO PROVIDE ALL RACKS AND SERVER EQUIPMENT.

ELECTRICAL CONTRACTOR SHALL RE-CIRCUIT AS REQUIRED ANY ELECTRICAL DEVICE THAT IS NOT REMOVED BY THE DEMOLITION SCOPE OF WORK. CONTRACTOR TO EXTEND EXISTING CIRCUITS AS REQUIRED TO CONNECT EXISTING ELECTRICAL DEVICES TO NEW POWER. THIS SHALL INCLUDE BUT NOT BE LIMITED TO: RECEPTACLE DEVICES, LIGHT FIXTURES, MECHANICAL EQUIPMENT, SIGNAGE, EXTERIOR LIGHTING, TELECOM EQUIPMENT, HVAC CONTROLS, ETC.

ALL ELECTRICAL DEVICES AND FIRE ALARM DEVICES LOCATED ON WALLS WITH MIRRORS SHALL BE APPROVED BY OWNER PRIOR TO ROUGH-IN. CONTRACTOR SHALL BE RESPONSIBLE FOR MEETING WITH THE OWNER TO DISCUSS ELECTRICAL DEVICE LOCATIONS WITH RESPECT TO MIRROR LOCATION.

GENERAL NOTES:

- THESE DRAWINGS ARE DIAGRAMMATIC IN NATURE AND INDICATE THE GENERAL EXTENT OF THE WORK. THE ELECTRICAL CONTRACTOR SHALL PROVIDE ALL PULL BOXES, JUNCTION BOXES AND INCIDENTAL MATERIALS AND LABOR FOR A COMPLETE AND FULLY FUNCTIONAL SYSTEM.
- ELECTRICAL CONTRACTOR SHALL DERATE CONDUCTORS AS REQUIRED BY THE N.E.C. WHEN GROUPED IN COMMON RACEWAYS.
- VERIFY REQUIREMENTS OF ALL MECHANICAL EQUIPMENT WITH CONTRACTOR PROVIDED SUBMITTALS. NOTIFY ENGINEER OF ANY CONFLICTS BETWEEN THE SUBMITTALS AND ELECTRICAL DRAWINGS.
- CONTRACTOR SHALL OFFSET OUTLET BOXES ON OPPOSITE SIDES OF A COMMON HALL TO PREVENT SOUND TRANSMISSION BETWEEN ADJOINING ROOMS. BOXES SHALL BE A MINIMUM OF 12" APART, AND MUST BE INSTALLED IN SEPARATE STUD CAVITIES.
- ALL LOW VOLTAGE WIRES NOT ROUTED IN CONDUIT SHALL BE PROVIDED AS PLENUM RATED CABLES.
- PROVIDE JUNCTION BOXES AND 3/4" CONDUIT WITH FULL-STRINGS UP TO ACCESSIBLE LOCATION IN PLENUM AT ALL VOICE AND DATA OUTLET LOCATIONS.
- WHERE BOXES ARE INSTALLED IN CONCRETE BLOCK WALLS, THE BOX MOUNTING HEIGHT SHALL BE AT THE BLOCK JOINT AND THE DEVICES SHALL BE PROVIDED WITH A JUMBO COVERPLATE.
- HALL WIRES RUN BELOW GRADE, IN CONCRETE THAT IS IN DIRECT CONTACT WITH THE EARTH OR MASONRY THAT IS IN DIRECT CONTACT WITH THE EARTH SHALL BE MET LOCATION LISTED.
- FURNITURE LAYOUTS ARE FOR REFERENCE ONLY. COORDINATE THE FINAL LOCATION OF ELECTRICAL DEVICES AND OUTLETS WITH ARCHITECT, OWNER AND FINAL FURNITURE PLANS PRIOR TO INSTALLATION.
- PROVIDE LOCKING CLIPS ON ALL CIRCUIT BREAKERS SERVING TELECOMMUNICATION EQUIPMENT AND FIRE ALARM CONTROL PANELS.
- REFERENCE MECHANICAL SHEETS FOR LOCATION OF SMOKE DAMPERS. PROVIDE 20A/120V POWER TO SMOKE DAMPERS AND INTERLOCK WITH FIRE ALARM RELAY(S). CIRCUIT SHALL ONLY SERVE SMOKE DAMPERS.
- PROVIDE DUCT SMOKE DETECTORS IN RETURN AND SUPPLY AIR PATHS FOR AIR HANDLING EQUIPMENT 2000 CFM AND LARGER AND WHERE SHOWN ON PLANS. INTERLOCK WITH AIR HANDLING EQUIPMENT TO SHUT DOWN UNIT UPON SMOKE DETECTION.
- DEVICES DENOTED WITH 'CT' SHALL BE MOUNTED ABOVE BACKSPLASH OF COUNTERTOP. VERIFY EXACT HEIGHT WITH ARCHITECTURAL PLANS AND ELEVATIONS PRIOR TO ROUGH-IN.
- ELECTRICAL CONTRACTOR SHALL PROVIDE GROUND FAULT INTERCEPTER (GFI) FOR ALL RECEPTACLE RECEPTACLES INSTALLED IN LOCATIONS UNDER 6' OF A SINK.

PLAN NOTES:

- ROUTE HOMERUN TO CIRCUIT(S) AND PANELBOARD PREVIOUSLY FEEDING DEMOLISHED OUTLETS IN THIS AREA AND TERMINATE ON SPARE 20A/1P CIRCUIT BREAKER AVAILABLE DURING DEMOLITION.
- ROUTE HOMERUN TO DESIGNATED PANELBOARD AND PROVIDE A NEW 20A/1P CIRCUIT BREAKER IN AVAILABLE SPACE TO TERMINATE ON.
- ROUTE HOMERUN TO DESIGNATED PANELBOARD AND PROVIDE A NEW 20A/2P, 208V CIRCUIT BREAKER IN AVAILABLE SPACE TO TERMINATE ON. COORDINATE EXACT PLUS TIE WITH OWNER AND SELECTED EQUIPMENT MANUFACTURER PRIOR TO INSTALLATION.
- PROVIDE RECEPTACLE AND COAX OUTLET AT 60" AFF. CONTRACTOR SHALL COORDINATE EXACT MOUNTING LOCATION WITH OWNER PRIOR TO ROUGH-IN. CONTRACTOR SHALL ALSO COORDINATE EXACT LOCATION AND NUMBER OF TV OUTLETS WITH OWNER DURING CONSTRUCTION AND PRIOR TO ROUGH-IN.
- GFCI RECEPTACLE TO BE LOCATED IN BASE CABINET BENEATH COUNTER. REFER TO ARCHITECTURAL DETAILS FOR EXACT PLACEMENT OF RECEPTACLES AT GROOMING STATION.
- PROVIDE 20A/1P 120V TOGGLE SWITCH FOR DISCONNECT AND MAKE ELECTRICAL CONNECTION TO INSTA-HOT WATER HEATER. ROUTE HOMERUN TO DESIGNATED PANELBOARD AND PROVIDE A NEW 20A/1P CIRCUIT BREAKER IN AVAILABLE SPACE TO TERMINATE ON.
- PROVIDE TAMPER RESISTANT TYPE RECEPTACLES IN ALL CHILD CARE AREAS.
- PROVIDE OUTLETS IN CASEWORK AND ROUTE CIRCUITRY HORIZONTALLY THROUGH CASEWORK TO FULL HEIGHT WALL UP TO DESIGNATED PANEL. COORDINATE EXACT REQUIREMENTS AND LOCATION WITH OWNER AND CASEWORK INSTALLER PRIOR TO INSTALLATION.
- PROVIDE RECESSED JUNCTION BOX AND MAKE ELECTRICAL CONNECTION TO SUIT DRYER MOTOR CONTROLLER AND GFCI SWITCH.
- INSTALL FIRE ALARM DEVICE AT BOTTOM OF JOIST. CONNECT NEW FIRE ALARM DEVICE TO EXISTING BUILDING FIRE ALARM SYSTEM.
- EXISTING FIRE ALARM AND RECEPTACLE/CIRCUITING TO REMAIN IN THIS AREA UNLESS NOTED OTHERWISE.
- CONNECT NEW FIRE ALARM DEVICE TO EXISTING BUILDING FIRE ALARM SYSTEM.
- PROVIDE FLOOR MOUNTED JUNCTION BOX FOR CONNECTION TO OWNER PROVIDED TABLE. FEEDER SHALL BE BELOW GRADE.
- PROVIDE RECEPTACLE AND COAX OUTLET AT 84" AFF. CONTRACTOR SHALL COORDINATE EXACT MOUNTING LOCATION WITH OWNER PRIOR TO ROUGH-IN. CONTRACTOR SHALL ALSO COORDINATE EXACT LOCATION AND NUMBER OF TV OUTLETS WITH OWNER DURING CONSTRUCTION AND PRIOR TO ROUGH-IN.
- PROVIDE CEILING MOUNTED JUNCTION BOX FOR CEILING HANGING ELEMENT. COORDINATE EXACT LOCATION WITH OWNER DURING CONSTRUCTION AND PRIOR TO ROUGH-IN.



HANNEY & ASSOCIATES, ARCHITECTS
1726 South Hillside, Wichita, Kansas, 67211
Phone (316) 683-8865
Fax (316) 684-1441

2021
GENESIS HEALTH CLUBS
900 N.E. Deerbrook Terrace
Lee's Summit, Missouri 64086



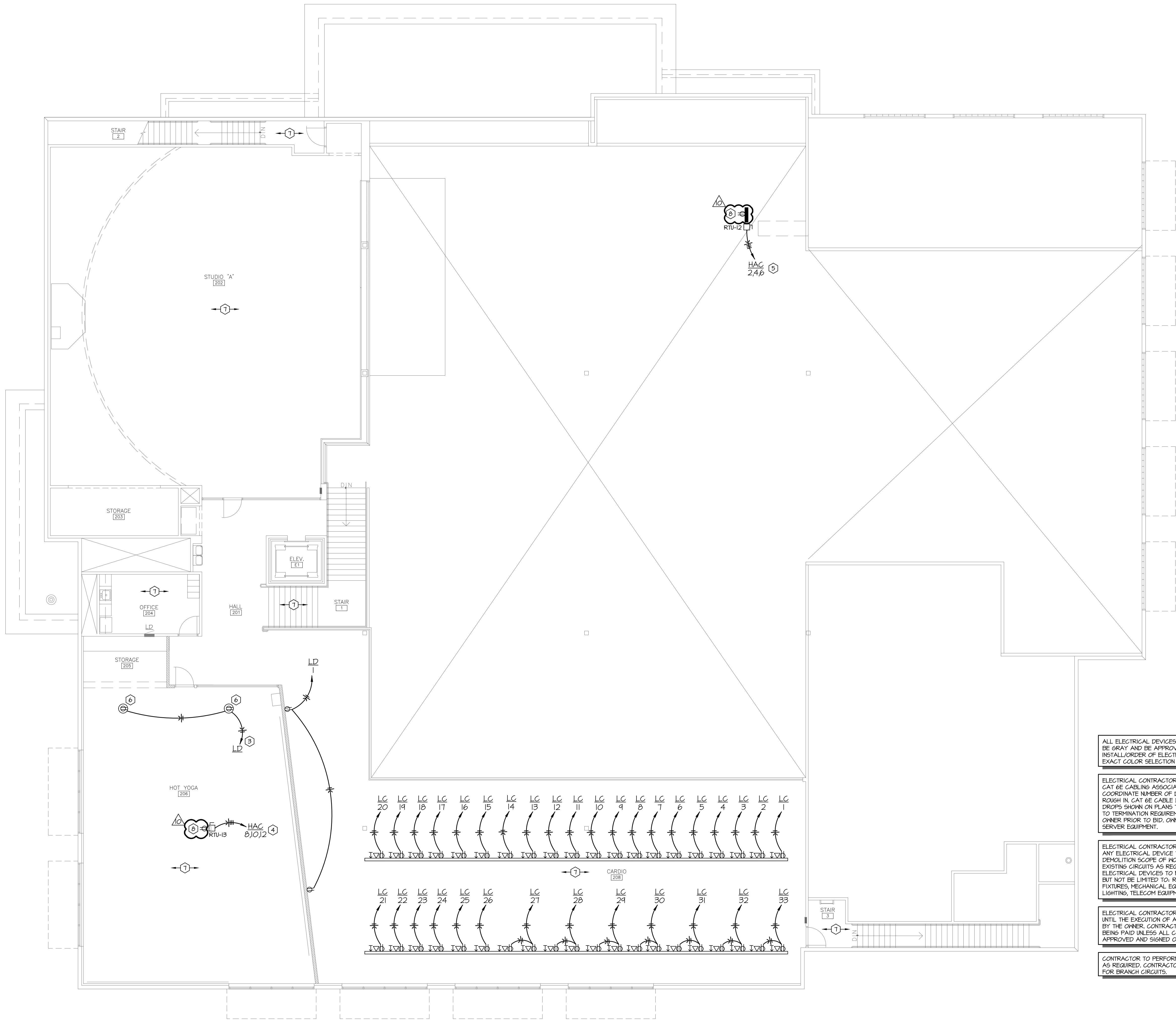
DRAWINGS ISSUED			
NO.	DATE	ITEM	ISSUED
10	6/11/21	CODE REVISION	
1	05/31/21	PLAN REVIEW	
8	05/21/21	REVIEW	
7	04/21/21	REVIEW	
6	04/20/21	REVIEW	
5	03/30/21	REVIEW	
4	03/05/21	REVIEW	
3	03/02/21	REVIEW	
2	11/21/21	REVIEW	
1	12/22/20	REVIEW	

COMPUTER DRAWING

DATE: JANUARY, 2021
DRAWN BY: JH, CM
CHECKED BY: CS

H&B
HOSS & BROWN
15902 Midland Drive
Shawnee, Kansas 66217
913.362.9090 | mail@h-b.com
H&B PROJECT NUMBER: 2110014
© Hoss & Brown Engineers 2021

SHEET
E2.1
OF - SHEETS



- GENERAL NOTES:**
- A. THESE DRAWINGS ARE DIAGRAMMATIC IN NATURE AND INDICATE THE GENERAL EXTENT OF THE WORK. THE ELECTRICAL CONTRACTOR SHALL PROVIDE ALL PULL BOXES, JUNCTION BOXES AND INCIDENTAL MATERIALS AND LABOR FOR A COMPLETE AND FULLY FUNCTIONAL SYSTEM.
 - B. ELECTRICAL CONTRACTOR SHALL DERATE CONDUCTORS AS REQUIRED BY THE N.E.C. WHEN GROUPED IN COMMON RACEWAYS.
 - C. VERIFY REQUIREMENTS OF ALL MECHANICAL EQUIPMENT WITH CONTRACTOR PROVIDED SUBMITTALS. NOTIFY ENGINEER OF ANY CONFLICTS BETWEEN THE SUBMITTALS AND ELECTRICAL DRAWINGS.
 - D. CONTRACTOR SHALL OFFSET OUTLET BOXES ON OPPOSITE SIDES OF A COMMON WALL TO PREVENT SOUND TRANSMISSION BETWEEN ADJOINING ROOMS. BOXES SHALL BE A MINIMUM OF 12" APART, AND MUST BE INSTALLED IN SEPARATE STUD CAVITIES.
 - E. ALL LOW VOLTAGE WIRES NOT ROUTED IN CONDUIT SHALL BE PROVIDED AS PLENUM RATED CABLES.
 - F. PROVIDE JUNCTION BOXES AND 3/4" CONDUIT WITH FULL-STRINGS UP TO ACCESSIBLE LOCATION IN PLENUM AT ALL VOICE AND DATA OUTLET LOCATIONS.
 - G. WHERE BOXES ARE INSTALLED IN CONCRETE BLOCK WALLS, THE BOX MOUNTING HEIGHT SHALL BE AT THE BLOCK JOINT AND THE DEVICES SHALL BE PROVIDED WITH A JUMBO COVERPLATE.
 - H. ALL WIRES RUN BELOW GRADE, IN CONCRETE THAT IS IN DIRECT CONTACT WITH THE EARTH, OR MASONRY THAT IS IN DIRECT CONTACT WITH THE EARTH SHALL BE NET LOCATION LISTED.
 - I. FURNITURE LAYOUTS ARE FOR REFERENCE ONLY. COORDINATE THE FINAL LOCATION OF ELECTRICAL DEVICES AND OUTLETS WITH ARCHITECT, OWNER AND FINAL FURNITURE PLANS PRIOR TO INSTALLATION.
 - J. PROVIDE LOCKING CLIPS ON ALL CIRCUIT BREAKERS SERVING TELECOMMUNICATION EQUIPMENT AND FIRE ALARM CONTROL PANELS.
 - K. REFERENCE MECHANICAL SHEETS FOR LOCATION OF SMOKE DAMPERS. PROVIDE 20A/120V POWER TO SMOKE DAMPERS AND INTERLOCK WITH FIRE ALARM RELAY(S). CIRCUIT SHALL ONLY SERVE SMOKE DAMPERS.
 - L. PROVIDE DUCT SMOKE DETECTORS IN RETURN AND SUPPLY AIR PATHS FOR AIR HANDLING EQUIPMENT 2000 CFM AND LARGER AND WHERE SHOWN ON PLANS. INTERLOCK WITH AIR HANDLING EQUIPMENT TO SHUT DOWN UNIT UPON SMOKE DETECTION.
 - M. DEVICES DENOTED WITH 'CT' SHALL BE MOUNTED ABOVE BACKSPLASH OF COUNTERTOP. VERIFY EXACT HEIGHT WITH ARCHITECTURAL PLANS AND ELEVATIONS PRIOR TO ROUGH-IN.
 - N. ELECTRICAL CONTRACTOR SHALL PROVIDE GROUND FAULT INTERRUPTER PROTECTION FOR ALL RESPECTIVE RECEPTACLES INSTALLED IN LOCATIONS UNDER 6' OF A SINK.

- PLAN NOTES:**
- 1. PROVIDE RECEPTACLE AND COAX OUTLET AT 60" AFF. CONTRACTOR SHALL COORDINATE EXACT MOUNTING LOCATION WITH OWNER PRIOR TO ROUGH-IN. CONTRACTOR SHALL ALSO COORDINATE EXACT LOCATION AND NUMBER OF TV OUTLETS WITH OWNER DURING CONSTRUCTION AND PRIOR TO ROUGH-IN.
 - 2. PROVIDE WIREWAY/RACEWAY FOR POWER AND COAX CABLING. ALL DEVICES TO BE INSTALLED IN RACEWAY. CONTRACTOR TO COORDINATE COLOR AND EXACT PLACEMENT OF OUTLETS WITH OWNER PRIOR TO FABRICATION OF RACEWAY. CONTRACTOR SHALL PROVIDE ALL CATV CABLING DROPS FROM EQUIPMENT DOWN TO SERVICE ROOM AS DIRECTED BY THE OWNER. CONTRACTOR SHALL COORDINATE EXACT REQUIREMENTS WITH OWNER AND EXPAND EXISTING CATV SERVICE AS REQUIRED FOR NEW DROPS.
 - 3. ROUTE HOMERUN TO DESIGNATED PANELBOARD AND PROVIDE A NEW 20A/1P CIRCUIT BREAKER IN AVAILABLE SPACE TO TERMINATE ON.
 - 4. EXISTING HVAC UNIT ON ROOF TO BE REPLACED. CONTRACTOR SHALL PROVIDE NEW 460V/3PH/20A CIRCUIT BREAKER IN EXISTING PANELBOARD PREVIOUSLY FEEDING DEMOLISHED HVAC UNIT. PROVIDE NEW 460V/30A NON-FUSED DISCONNECT SWITCH IN A NEMA 3R ENCLOSURE AT UNIT. MAKE ELECTRICAL CONNECTION WITH 4/0 4 #10 GROUND WIRE IN 3/4" CONDUIT. EXISTING FEEDER AND/OR CONDUIT MAY BE USED IF IT MEETS OR EXCEEDS SPECIFIED SIZING.
 - 5. EXISTING HVAC UNIT ON ROOF TO BE REPLACED. CONTRACTOR SHALL PROVIDE NEW 460V/3PH/45A CIRCUIT BREAKER IN EXISTING PANELBOARD PREVIOUSLY FEEDING DEMOLISHED HVAC UNIT. PROVIDE NEW 460V/60A NON-FUSED DISCONNECT SWITCH IN A NEMA 3R ENCLOSURE AT UNIT. MAKE ELECTRICAL CONNECTION WITH 4/0 4 #10 GROUND WIRE IN 3/4" CONDUIT. EXISTING FEEDER AND/OR CONDUIT MAY BE USED IF IT MEETS OR EXCEEDS SPECIFIED SIZING.
 - 6. PROVIDE CEILING-MOUNTED RECEPTACLE FOR RADIANT INFRARED GAS HEATER.
 - 7. EXISTING FIRE ALARM AND RECEPTACLES/CIRCUITING TO REMAIN IN THIS AREA UNLESS NOTED OTHERWISE.
 - 8. PROVIDE NEW GFCI, WEATHER PROOF RECEPTACLE IN THE LOCATION SHOWN. MOUNT ON UNISTRUT WALL AS REQUIRED TO MAINTAIN DISTANCE FROM THE RTU UNDER 25". FURNISH AND INSTALL NEW FEEDER FROM THE NEAREST 120V PANELBOARD WITH SPARES AVAILABLE.

ALL ELECTRICAL DEVICES AND COVER PLATE COLORS SHALL BE GRAY AND BE APPROVED BY THE OWNER PRIOR TO INSTALL/ORDER OF ELECTRICAL DEVICES. COORDINATE EXACT COLOR SELECTION WITH OWNER.

ELECTRICAL CONTRACTOR SHALL PROVIDE AND INSTALL ALL CAT 6E CABLING ASSOCIATED WITH DATA DROPS. COORDINATE NUMBER OF DROPS WITH OWNER PRIOR TO ROUGH IN. CAT 6E CABLE DROPS SHALL BE RUN FROM DATA DROPS SHOWN ON PLANS TO EQUIP ROOM 122. CONTRACTOR TO TERMINATION REQUIREMENTS INSIDE STORE ROOM WITH OWNER PRIOR TO BID. OWNER TO PROVIDE ALL RACKS AND SERVER EQUIPMENT.

ELECTRICAL CONTRACTOR SHALL RE-CIRCUIT AS REQUIRED ANY ELECTRICAL DEVICE THAT IS NOT REMOVED BY THE DEMOLITION SCOPE OF WORK. CONTRACTOR TO EXTEND EXISTING CIRCUITS AS REQUIRED TO CONNECT EXISTING ELECTRICAL DEVICES TO NEW POWER. THIS SHALL INCLUDE BUT NOT BE LIMITED TO: RECEPTACLE DEVICES, LIGHT FIXTURES, MECHANICAL EQUIPMENT, SIGNAGE, EXTERIOR LIGHTING, TELECOM EQUIPMENT, HVAC CONTROLS, ETC.

ELECTRICAL CONTRACTOR SHALL DO NO ADDITIONAL WORK UNTIL THE EXECUTION OF A SIGNED CHANGE ORDER IS SIGNED BY THE OWNER. CONTRACTOR WILL RUN THE RISK OF NOT BEING PAID UNLESS ALL CHANGE ORDERS HAVE BEEN APPROVED AND SIGNED OFF BY THE OWNER.

CONTRACTOR TO PERFORM VOLTAGE DROP CALCULATIONS AS REQUIRED. CONTRACTOR TO UPSIZE WIRE AS REQUIRED FOR BRANCH CIRCUITS.

ELECTRICAL CONTRACTOR SHALL COORDINATE ALL ELECTRICAL REQUIREMENTS ASSOCIATED WITH STEAM ROOM WITH OWNER AND EQUIPMENT PROVIDED. REFER TO STEAM ROOM DIAGRAMS AND DETAILS LOCATED WITHIN ARCHITECTURAL SET OF DRAWINGS FOR ADDITIONAL INFORMATION.

THE DESIGN OF THE FIRE ALARM SYSTEM AND VOICE EVACUATION SYSTEM SHALL BE PROVIDED BY THE FIRE ALARM EQUIPMENT SUPPLIER. REFER TO FIRE ALARM SHOP DRAWINGS FOR LOCATIONS OF ALL ASSOCIATED FIRE ALARM SYSTEM AND DEVICES ASSOCIATED WITH THIS FACILITY. CONTRACTOR TO SUBMIT SHOP DRAWINGS TO FIRE MARSHAL FOR APPROVAL. THE FIRE ALARM EQUIPMENT SUPPLIER SHALL COORDINATE EXACT LOCATIONS OF ALL FIRE ALARM DEVICES WITH OWNER PRIOR TO SUBMITTAL TO FIRE MARSHAL. REFER TO ARCHITECTURAL CODE PLANS FOR BUILDING OCCUPANCY INFORMATION.

ELECTRICAL CONTRACTOR SHALL WALK THRU THE ENTIRE BUILDING WITH GENERAL CONTRACTOR AND OWNER TO VERIFY EXACT LOCATIONS AND QUANTITIES OF TV'S, FLOOR MOUNTED RECEPTACLES, AND NEON SIGNS. COORDINATE WALK-THRU WITH GENERAL CONTRACTOR AND OWNER.

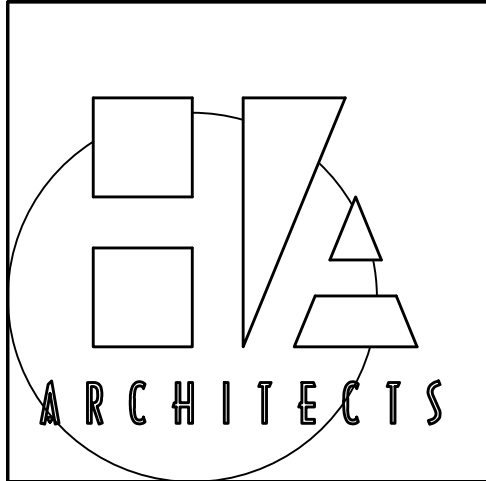
ALL ELECTRICAL DEVICES AND FIRE ALARM DEVICES LOCATED ON WALLS WITH MIRRORS SHALL BE APPROVED BY OWNER PRIOR TO ROUGH-IN. CONTRACTOR SHALL BE RESPONSIBLE FOR MEETING WITH THE OWNER TO DISCUSS ELECTRICAL DEVICE LOCATIONS WITH RESPECT TO MIRROR LOCATION.



01 Second Floor Power Plan

Scale: 1/8"=1'-0"

H&B
HOSS & BROWN
15902 Midland Drive
Shawnee, Kansas 66217
913.362.9090 | mail@h-be.com
H&B PROJECT NUMBER: 2110014
© Hoss & Brown Engineers 2021



HANNEY & ASSOCIATES, ARCHITECTS
1726 South Hillside, Wichita, Kansas, 67211
Phone (316) 683-8866
Fax (316) 684-1441

2021
GENESIS HEALTH CLUBS
900 N.E. Deerbrook Terrace
Lee's Summit, Missouri 64086



DRAWINGS ISSUED			
NO.	DATE	ITEM	ISSUED
10	6/11/21	CODE REVISION	
1	05/31/21	PLAN REVIEW	
8	05/21/21	REVIEW	
7	04/21/21	REVIEW	
6	04/20/21	REVIEW	
5	03/30/21	REVIEW	
4	03/05/21	REVIEW	
3	03/02/21	REVIEW	
2	1/12/21	REVIEW	
1	12/22/20	REVIEW	

COMPUTER DRAWING

DATE: JANUARY, 2021
DRAWN BY: JH, CM
CHECKED BY: CS

SHEET
E2.2
OF - SHEETS

12



Scale: Not to Scale



6/11/21

HANNEY & ASSOCIATES, ARCHITECTS
1726 South Hillside, Wichita, Kansas, 67211
Phone (316) 683-8965
Fax (316) 684-1441

2021
GENESIS HEALTH CLUBS
900 N.E. Deerbrook Terrace
Lee's Summit, Missouri 64086

COMPUTER DRAWINGSHEET

E3.1

OF - SHEETS

