

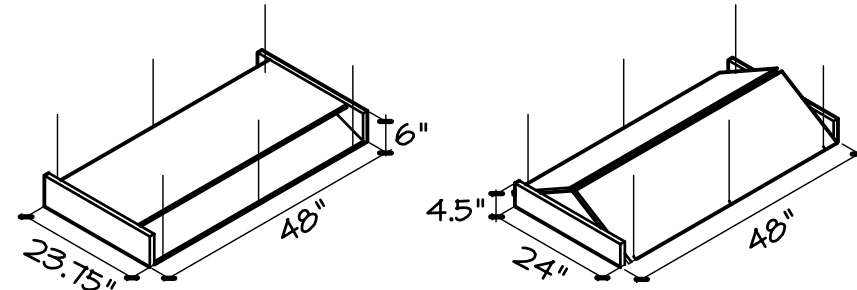


LED ACRYLIC SUSPENDED FIXTURES W/ GEAR SHAPE
1 EA. 50 CM, RED
1 EA. 50 CM, BLUE
1 EA. 40 CM, YELLOW
www.beautifulhalo.com
CODE# HL473304

1 CHILD CARE ACCENT LIGHT

SCALE: N.T.S.

LED LIGHT FIXTURES THAT FIT BELOW THE
CEILING TILES DO NOT NEED TO BE TENTED.

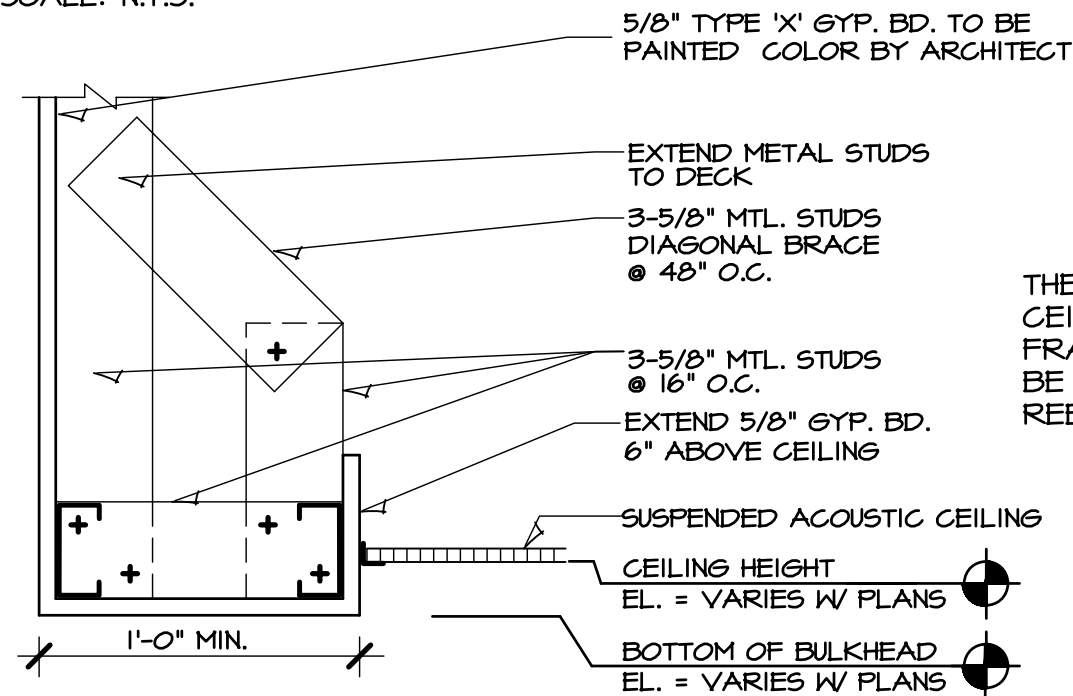


THE NATATORIUM+GENESIS+CHILD CARE AREAS
REQUIRE THIS PARTICULAR DETAIL SINCE THE
BUILDING IS IBC TYPE I-B CONSTRUCTION WHICH
REQUIRES THE FLOOR/CEILING ASSEMBLY TO BE
COMPLIANT WITH 2-HOUR FIRE CONSTRUCTION.

REFER TO THE UL - DETAIL 3 ON THIS SHEET.
ALL LIGHTS SHALL HAVE A TENT SIMILAR TO
ONE OF THE ABOVE DETAILS.

2 CEILING TENT DETAIL

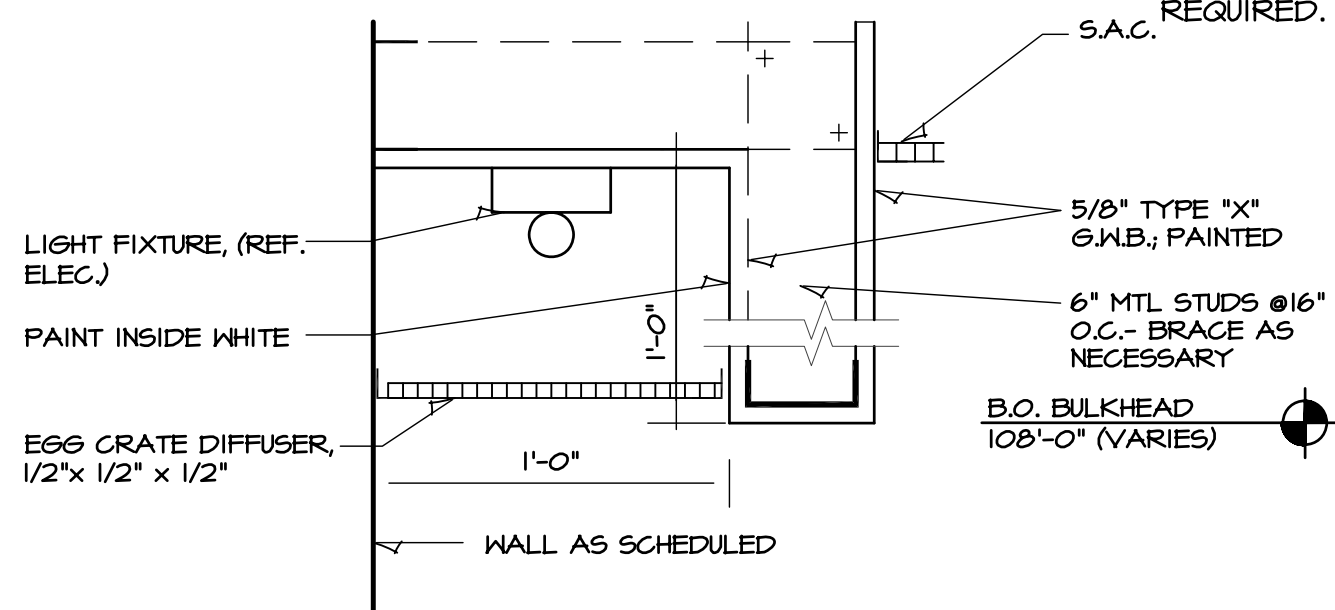
SCALE: N.T.S.



THE VAULTED, TILE
CEILING AND
FRAMING ARE TO
BE REMOVED AND
REBUILT.

3 BULKHEAD DETAIL

SCALE: N.T.S.

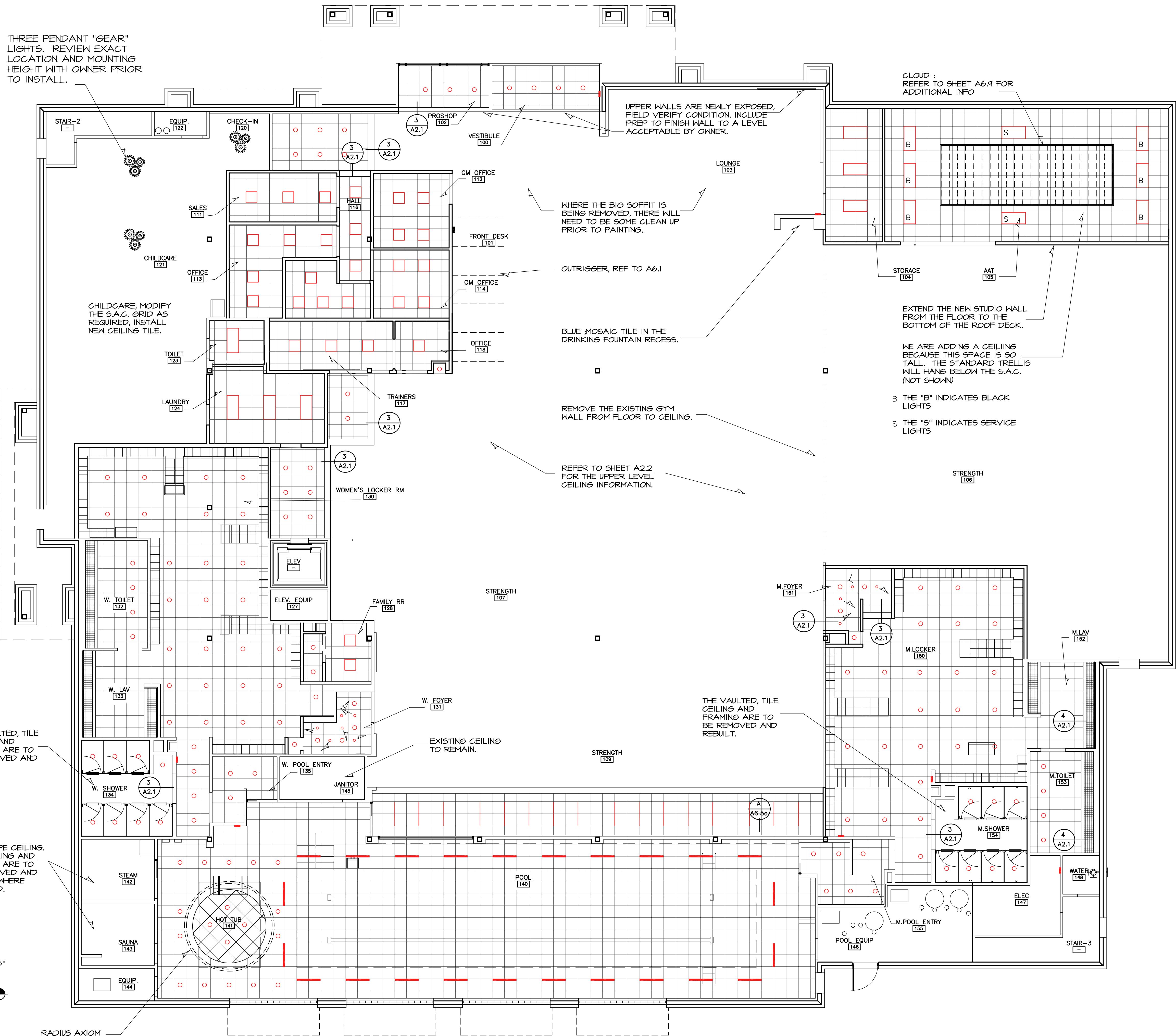


SHED TYPE CEILING.
TILE CEILING AND
FRAMING ARE TO
BE REMOVED AND
REBUILT WHERE
REQUIRED.

RADIUS AXIOM
REFER TO DETAILS
1-3/ A2.2

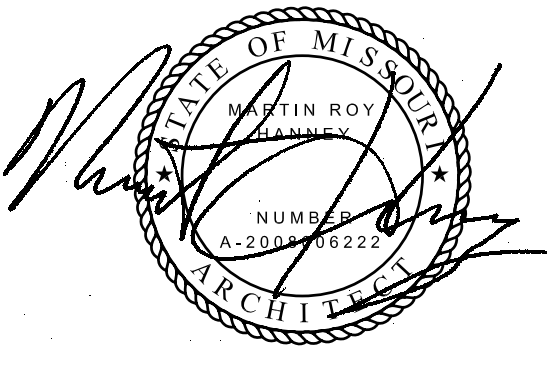
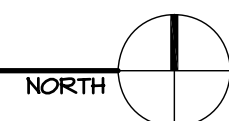
4 LIGHT COVE DETAIL

SCALE: N.T.S.



A OVERALL MAIN LEVEL REFLECTED CEILING PLAN

SCALE: 1/8"=1'-0"



HANNEY & ASSOCIATES, ARCHITECTS
1728 South Hillside, Wichita, Kansas, 67211
Phone (316) 685-6865
Fax (316) 684-1441

2021
GENESIS HEALTH CLUBS
900 N.E. Deerbrook Terrace
Lee's Summit, Missouri 64086



DRAWINGS ISSUED			
NO.	DATE	ITEM	ISSUED
1	05/31/21	PLAN REVIEW	
2	05/21/21	REVIEW	
3	04/21/21	REVIEW	
4	04/20/21	REVIEW	
5	03/30/21	REVIEW	
6	03/05/21	REVIEW	
7	03/02/21	REVIEW	
8	1/12/21	REVIEW	
9	12/22/20	REVIEW	

COMPUTER DRAWING	
6LS_A201.dwg	

DATE: JANUARY, 2021	
DRAWN BY: CHECKED BY:	
MH, CH, TC, JC, TH MRH	

SHEET	
A2.1	
OF	SHEETS