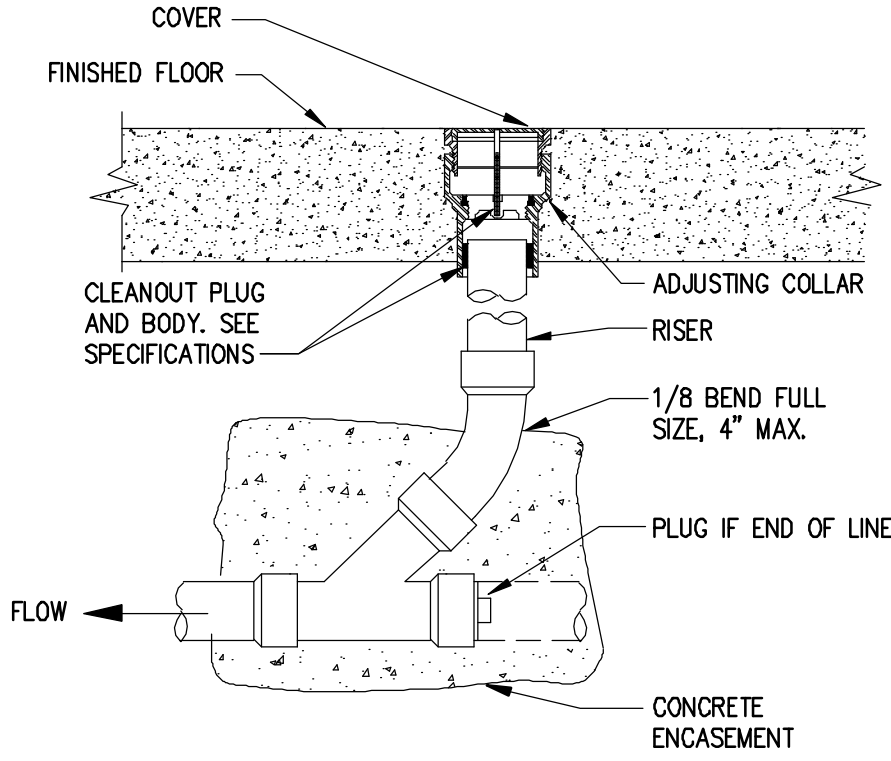
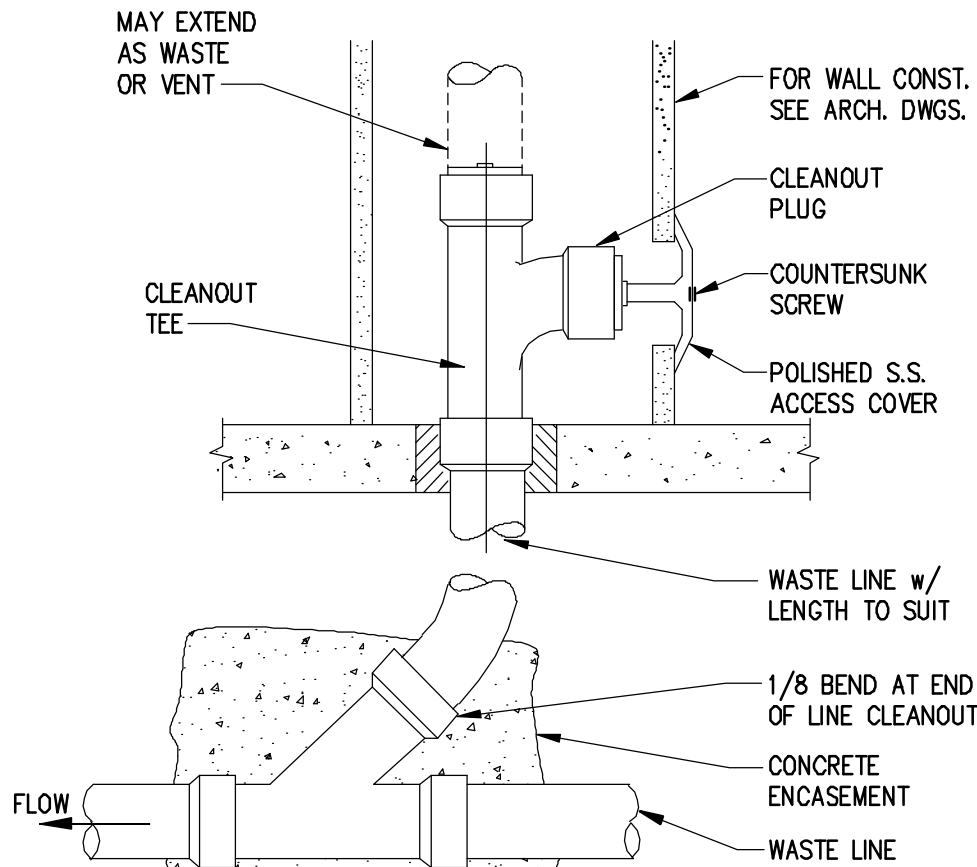


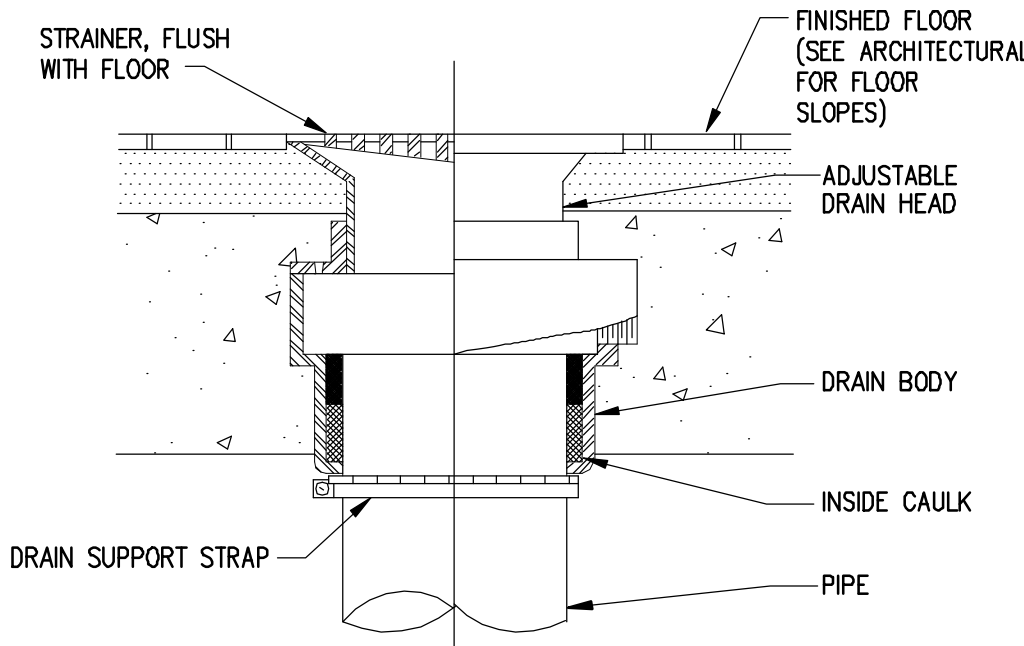
| PLUMBING FIXTURE SCHEDULE | | | | | | | NOTE: FIXTURES MAY BE SUBSTITUTED BY AN EQUIVALANT FIXTURE. ALL SUBSTITUTIONS SHALL BE SUBMITED FOR APPROVAL. | |
|---------------------------|---|---|---------------------|------|--------|--------|---|--------------------------|
| MARK | FIXTURE TYPE | MANUFACTURER & MODEL NO. | FIXTURE CONNECTIONS | | | | REMARKS | RESPONSIBILITY |
| | | | CW | HW | W | V | | |
| WC | HANDICAP WATER CLOSET | KOHLER MODEL - K-3493-0 | 1/2" | ---- | 4" | 2" | VITREOUS CHINA, WHITE FLOOR MOUNTED ADA ELONGATED | (PROVIDED BY CONTRACTOR) |
| LAV | HANDICAP WALLHUNG LAVATORY | AMERICAN STANDARD MODEL #0124.024 FAUCET HOLES ON 4" CENTERS | 1/2" | 1/2" | 1 1/2" | 1 1/2" | FURNISH W/Delta 3579-LHP WFLGHDF G-NECK FAUCET, LEVER HANDLES ARCHITECT TO SPEC. COLOR. | (PROVIDED BY CONTRACTOR) |
| WH | GAS WATER HEATER | INSTANTANEOUS GAS FIRED. 3.8 GALLONS PER MINUTE AT 100 DEGREES (40 DEGREES TO 140 DEGREES) RISE | 1" | 1" | ---- | ---- | RHEEM MODEL-RIGH-950VELN-2 P.C. SHALL PROVIDE PVC VENTS AND ALL REQUIRED ACCESSORIES. | (PROVIDED BY CONTRACTOR) |
| EW | DOUBLE UNIT HANDICAP ELEC. WATER COOLER | ELKAY MODEL No. EZSTL8SC OR EQUAL | 1/2" | ---- | 1 1/2" | 1 1/2" | FURNISH WITH STANDARD CABINET FINISH, TOUCH PAD ARCHITECT TO SPEC. COLOR. | (PROVIDED BY CONTRACTOR) |
| S-1 | WALL MOUNTED 2 - COMP. SINK | REGENCY MODEL #00S217171BRT | 1/2" | 1/2" | 1 1/2" | 1 1/2" | T&S BRASS BRONZE WORKS FAUCET - MPY-8WLN-08-CR ARCHITECT TO SPEC. COLOR. | (PROVIDED BY CONTRACTOR) |
| S-3 | WALL MOUNTED SINGLE COMP. SINK | REGENCY MODEL #00S11717 | 1/2" | 1/2" | 1 1/2" | 1 1/2" | T&S BRASS BRONZE WORKS FAUCET - MPY-8WLN-08-CR ARCHITECT TO SPEC. COLOR. | (PROVIDED BY CONTRACTOR) |
| W/D | WASHER DRYER | WHIRLPOOL WASHER - BY OWNER DRYER - BY OWNER | 1/2" | 1/2" | 1 1/2" | 1 1/2" | | (PROVIDED BY OWNER) |
| DW | DISH WASHER | AUTO-CHLOR MODEL - U34B SPACESAVER | 1/2" | 1/2" | 1 1/2" | 1 1/2" | | (PROVIDED BY OWNER) |
| FD | FLOOR DRAIN | ZURN MODEL #Z-415 | ---- | ---- | 4" | 2" | TYPE "N" STRAINER. PROVIDE WITH COMPLETE BODY ASSEMBLY | (PROVIDED BY CONTRACTOR) |
| MS | MOP SINK | FIAT MODEL #MSB3636 W/AMERICAN STANDARD 6344.212 FAUCET | 1/2" | 1/2" | 1 1/2" | 1 1/2" | | (PROVIDED BY CONTRACTOR) |
| FCO | FLOOR CLEANOUT | ZURN MODEL #Z-1446 C/W | ---- | ---- | 3" | ---- | FURNISH WITH NICKEL BRONZE SCORITATED TOP | (PROVIDED BY CONTRACTOR) |
| WCO | WALL CLEANOUT | ZURN MODEL #Z-1446 C/W | ---- | ---- | 3" | ---- | RAISED HEADPLUG POLISH S.S. COVER & VANDAL PROOF SCREW | (PROVIDED BY CONTRACTOR) |
| | RECIRCULATING PUMP | TACO MODEL - 006-B4-1PNP | | | | | PROVIDED AND INSTALLED BY P.C. SUBSTITUTIONS MUST BE EQUAL OR BETTER. CONNECT TO RECEIPT. | (PROVIDED BY CONTRACTOR) |



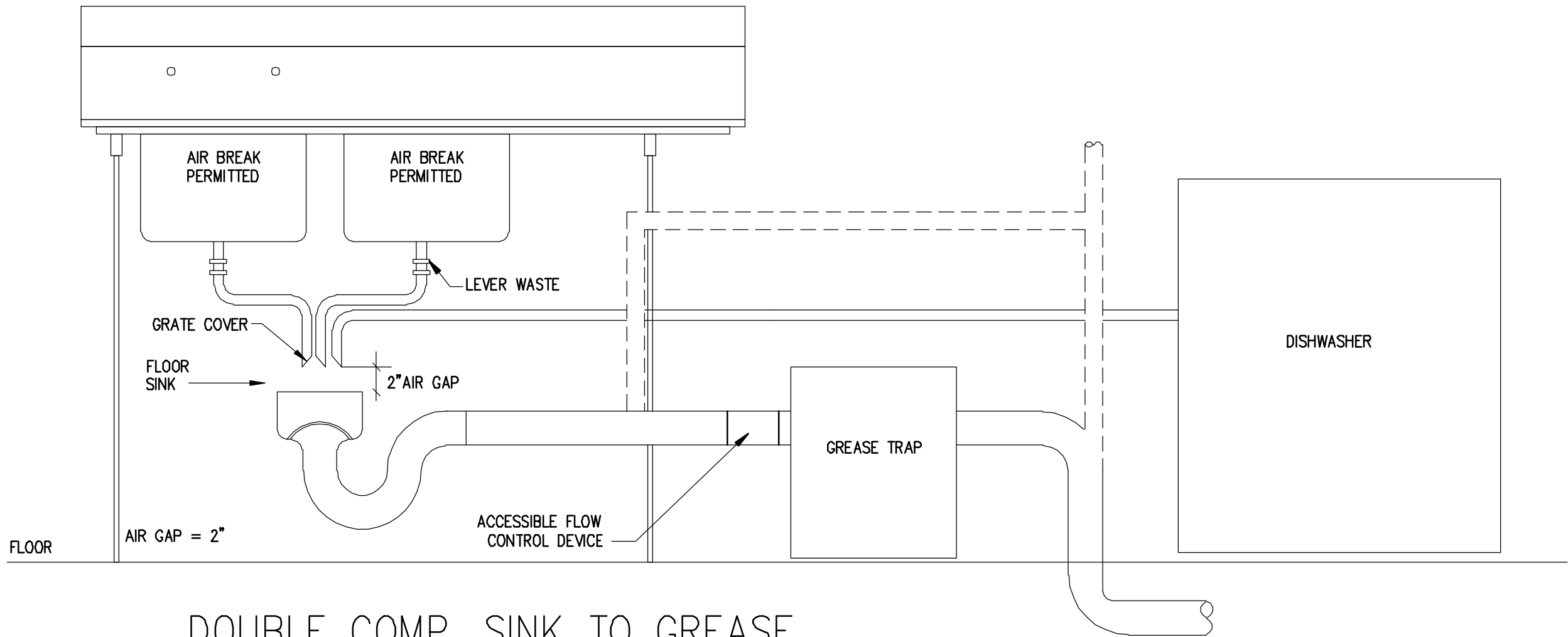
FLOOR CLEANOUT DETAIL
SCALE: NTS



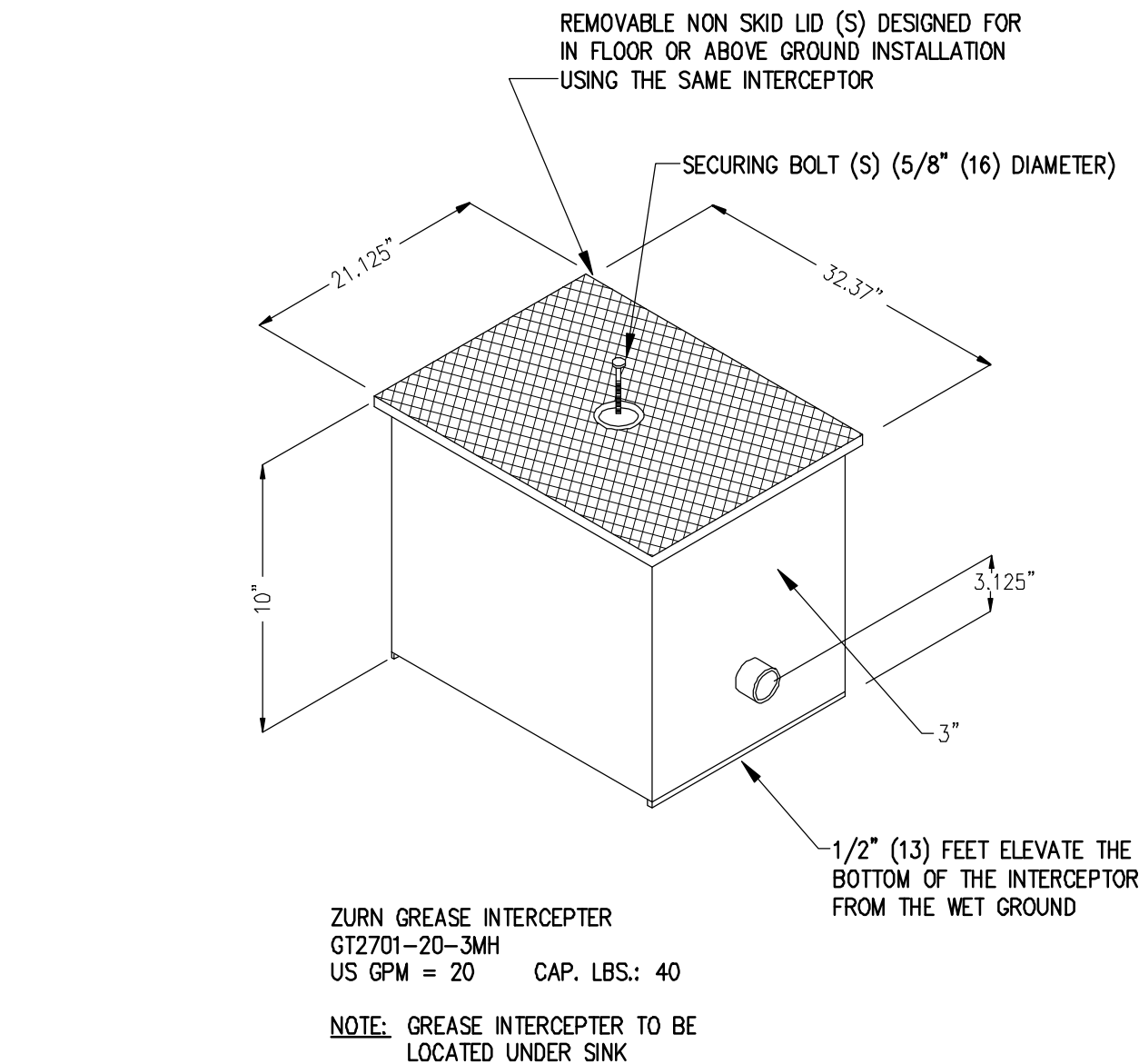
WALL CLEANOUT DETAIL
SCALE: NTS



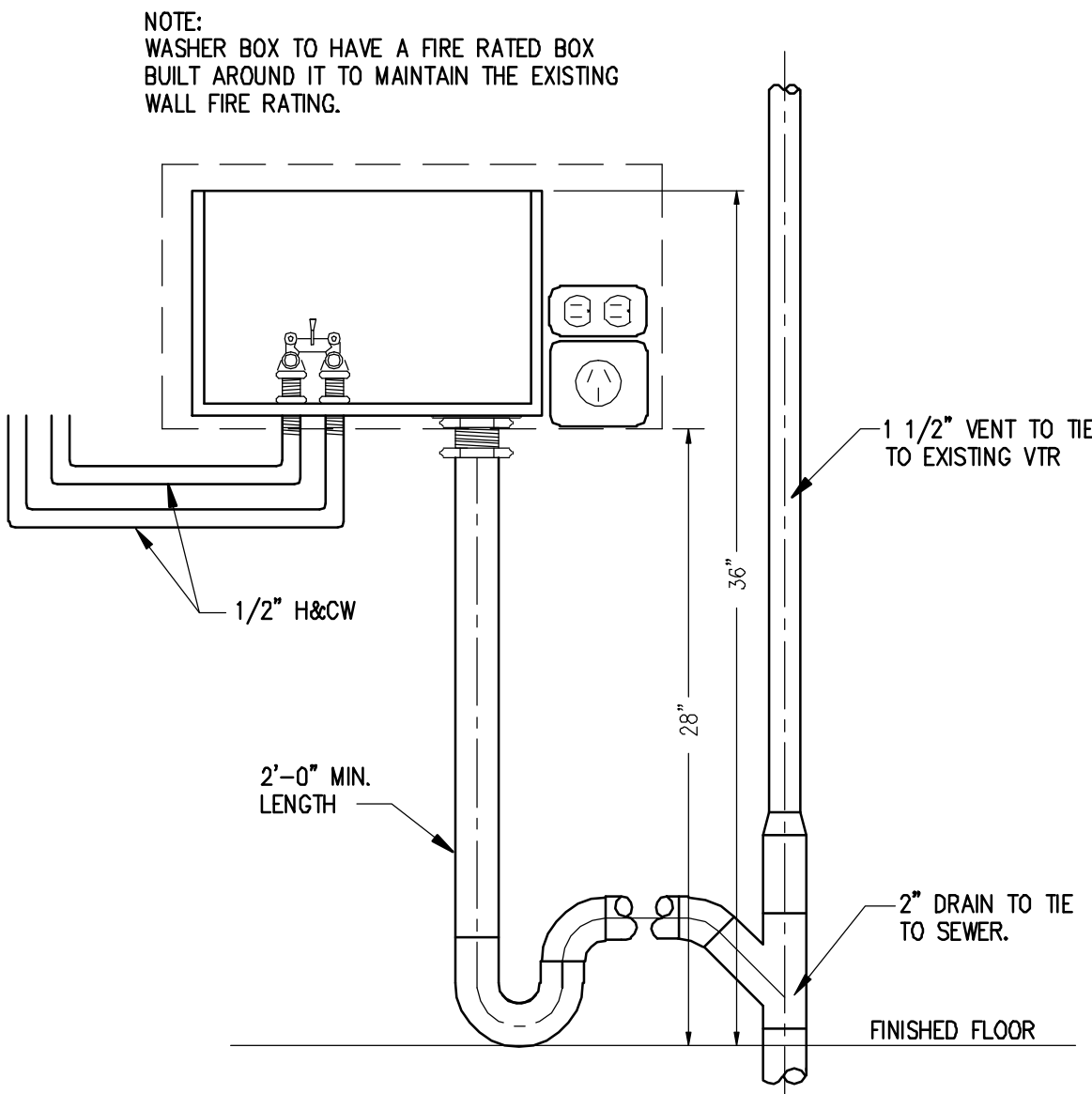
FLOOR DRAIN DETAIL
SCALE: NTS



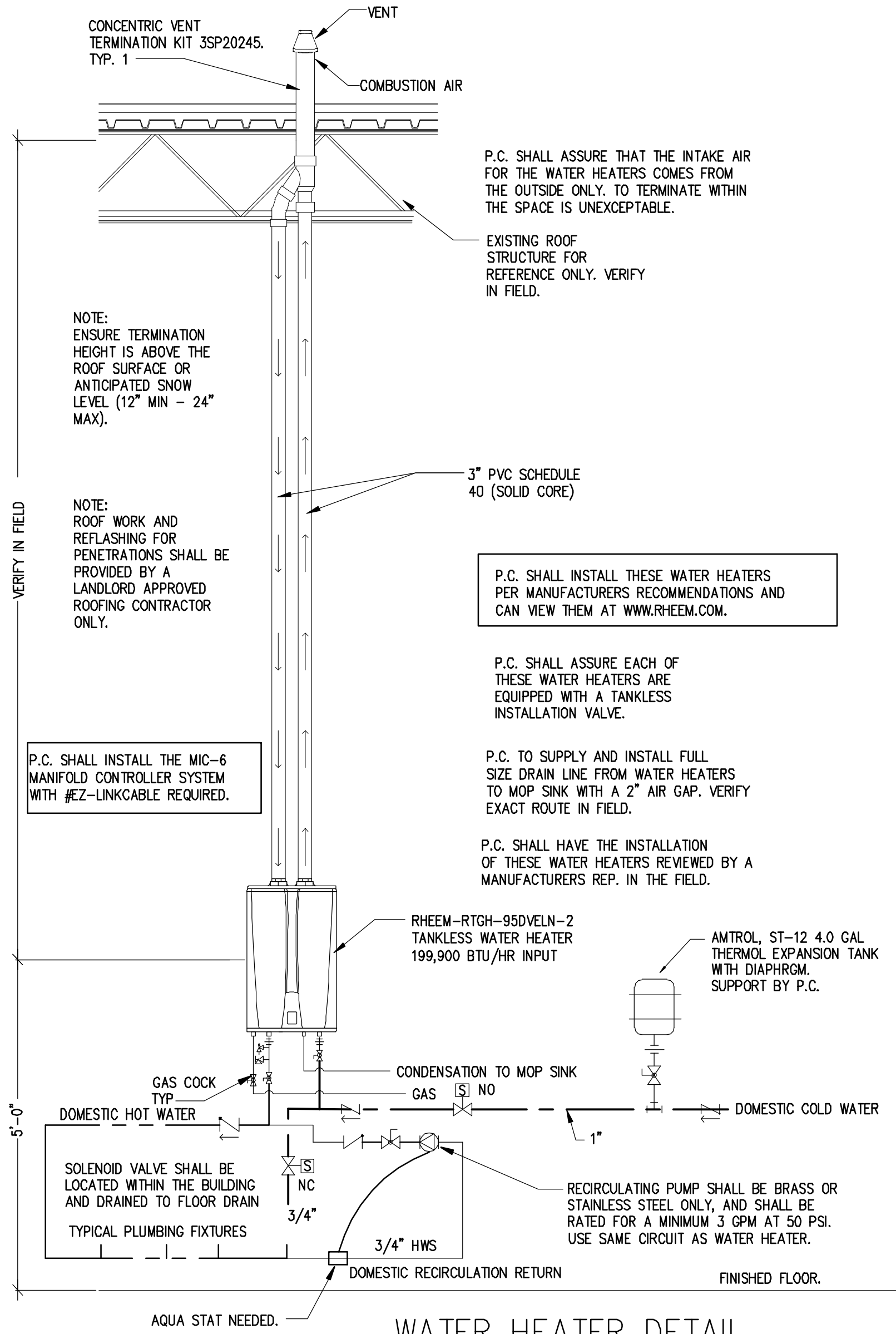
DOUBLE COMP. SINK TO GREASE TRAP W/ DISHWASHER DETAIL
SCALE: NTS



INTERCEPTOR DETAIL
SCALE: NTS



WASHER BOX DETAIL
SCALE: NTS



WATER HEATER DETAIL
SCALE: NTS

PLUMBING NOTES

- REFER TO WATER HEATER DETAIL ON THIS SHEET FOR PLUMBING AT WATER HEATER
- P.C. TO SUPPLY AND INSTALL FULL SIZE DRAIN LINE FROM WATER HEATERS TO MOP SINK WITH A 2" AIR GAP. VERIFY EXACT ROUTE IN FIELD.
- P.C. TO CONNECT NEW SEWER PIPING TO THE EXISTING LINE WHERE IT ENTERS THE SPACE AND NOT TO REUSE OR CONNECT TO EXISTING SEWER LINES THAT ARE WITHIN THE SPACE. P.C. TO FIND/LOCATE THE FURTHEST POINT DOWN STREAM BEFORE LEAVING THE SPACE AND CONNECT NEW SEWER LINE TO IT. V.I.F.
- ALL LAVATORIES AND HAND SINKS SHALL BE INSTALLED WITH A TEMPERATURE CONTROL DEVICE TO ASSURE THE WATER TEMPERATURE DOES NOT EXCEED 109 DEG. F.
- ALL WATER LINES SHALL BE PEX OR COPPER ONLY. NO CPVC SHALL BE ALLOWED.
- ANY POUR BACKS TO THE EXISTING FLOOR THAT IS NEEDED BECAUSE OF ANY SAW CUTS WILL NEED TO BE COMPACTED IN 6" LIFTS, VAPOR BARRIER ADDED, DOWELS DRILLED AND EPOXYED AT 24" ON CENTER ON BOTH SIDES OF TRENCH. POUR BACK SHALL BE DONE WITH 3000 PSI CONCRETE WITH FIBER. FINISH SHALL BE DONE WITH A STEEL TROWEL AND 1/4" BELOW TOP OF EXISTING CONCRETE.
- PROVIDE HAMMER ARRESTOR AT EVERY QUICK CLOSURE VALVE OR FAUCET.
- P.C. SHALL SUPPLY AND INSTALL SHUT OFF VALVES AT REQUIRED LOCATIONS. TO BE VERIFIED AT INSPECTIONS.
- WASTE AND VENT LINES SHALL BE CAST IRON NO-HUB ABOVE GROUND, PUSH-ON JOINT WITH NEOPRENE GASKET UNDERGROUND. PVC MAY BE USED WHERE APPROVED BY CODE.



CONTRACTOR SHALL BE RESPONSIBLE FOR ALL DIMENSIONS AT THE JOB SITE. ANY DISCREPANCIES SHALL BE BROUGHT TO THE ATTENTION OF THE PROJECT COORDINATOR LISTED ON THE DRAWINGS.

THESE DRAWINGS AND SPECIFICATIONS ARE THE PROPERTY OF BUFF CITY SOAP LLC. AND MAY NOT BE USED, COPIED OR DUPLICATED WITHOUT PRIOR WRITTEN CONSENT. ANY UNAUTHORIZED USE OR DISCLOSURE OF PROPRIETARY INFORMATION CONTAINED HEREIN MAY SUBJECT SUCH PERSON(S) TO CRIMINAL AND/OR CIVIL PENALTIES.

REMODEL TENANT FINISH FOR:

BUFF CITY SOAP
STREETS OF WEST PRIORITY
2050 NW LOWENSTEIN DR. SUITE C
LEE'S SUMMIT, MO 64081



Date: 05/05/21
Project No: 21170
Checked: ROM

Sheet: PLUMBING FIXTURE SCHEDULE, DETAILS AND NOTES
REVISIONS