

NOTES:

1. THE CONTRACTOR SHALL, FURNISH ALL LABOR MATERIALS AND EQUIPMENT FOR THE COMPLETE INSTALLATION
2. NOT USED
3. ALL SWITCHES ARE TO BE ϕ 46" AFF. AND ARE TO BE 20A 120/277V "I" RATED SPEC. GRADE TYPE.
4. ALL WORK SHALL CONFORM TO THE REQUIREMENTS OF THE 2017 EDITION OF THE NEC AND THE LATEST EDITION OF ALL LOCAL CODES AND ORDINANCES.
5. WORKMANSHIP SHALL BE FIRST QUALITY AND IN ACCORDANCE WITH BEST PRACTICES FOR THE TRADE BY SKILLED WORKERS.
6. LOCATIONS SHOWN ARE APPROXIMATE. CONTRACTOR SHALL COORDINATE ACTUAL LOCATIONS WITH OTHER TRADES AND THE OWNER OF THE OWNERS AUTHORIZED REPRESENTATIVE.
7. UNLESS OTHERWISE NOTED, CONDUCTOR INSULATION SHALL BE TYPE THHN, RATED 600V AC AND 75 DEG. C. CONDUCTORS FOR USE IN POWER AND LIGHTING CIRCUITS NO. 10 AND SMALLER SHALL BE SOLID, NO. 8 AND LARGER CONDUCTORS SHALL BE STRANDED. CONDUCTORS FOR USE IN CONTROL AND SIGNAL CIRCUITS SHALL BE NO. 14 STRANDED, ALL CONDUCTORS SHALL BE COPPER.
8. CONDUIT RUNS SHALL BE INSTALLED PER STATE AND LOCAL CODES.
9. ALL MATERIALS SHALL BE NEW, WITH U.L. APPROVED LABELS.
10. ALL ELECTRICAL EQUIPMENT AND SYSTEMS SHALL BE TESTED AND ADJUSTED FOR PROPER OPERATION. COMPLETE WIRING SYSTEM SHALL BE FREE OF SHORT AND OPEN CIRCUITS.
11. COLOR OF DEVICES AND DEVICE PLATES SHALL BE COORDINATED WITH WALL COLOR AND SHALL BE COMPATIBLE WITH WALL COLORS.
12. THE CONTRACTOR SHALL OBTAIN AND PAY ALL FEES AND PERMITS REQUIRED FOR THE CONSTRUCTION OF THE PROJECT.
13. THE CONTRACTOR SHALL FURNISH THE CERTIFICATE OF ELECTRICAL INSPECTION TO THE OWNER AT THE COMPLETION OF THIS PROJECT.
14. ALL ELECTRICAL EQUIPMENT SHOWN SHALL BE ELECTRICALLY PROTECTED AND PROPERLY WIRED IN ACCORDANCE WITH THE NEC. COORDINATE LOCATIONS AND ELECTRICAL DATA WITH THE OWNER.
15. FLEXIBLE METAL RACEWAYS 6 FEET OR LESS IN LENGTH SHALL BE PROVIDED TO ALL ELECTRICAL EQUIPMENT SUBJECT TO VIBRATION OF MOVEMENT AND FOR ALL MOTORS. LIQUID TIGHT RACEWAYS SHALL BE USED IN WET LOCATIONS.
16. REUSE EXISTING ELECTRICAL SERVICE AND PANELS AS SHOWN.
17. ALL EXISTING CONDUIT AND CONDUCTORS THAT ARE NOT TO BE USED IN THE REMODEL MUST BE REMOVED, OBSOLETE AND DILAPIDATED WIRING AND EQUIPMENT SHALL NOT BE REUSED.

PROVIDE FULL SIZED CABLE TO WATER PIPING AT SIZE REQ. BY TABLE 250.66. IF WATER SERVICE TO STRUCTURE IS METALLIC, CONNECTION TO BE MADE WITHIN 5' OF WATER ENTRANCE IN ACCORD. WITH 250.50(a). IF WATER SERVICE IS NON-METALLIC, MAKE CONNECTION TO METALLIC WATER PIPING (IF PRESENT) IN ACCORD. WITH 250.104(a).

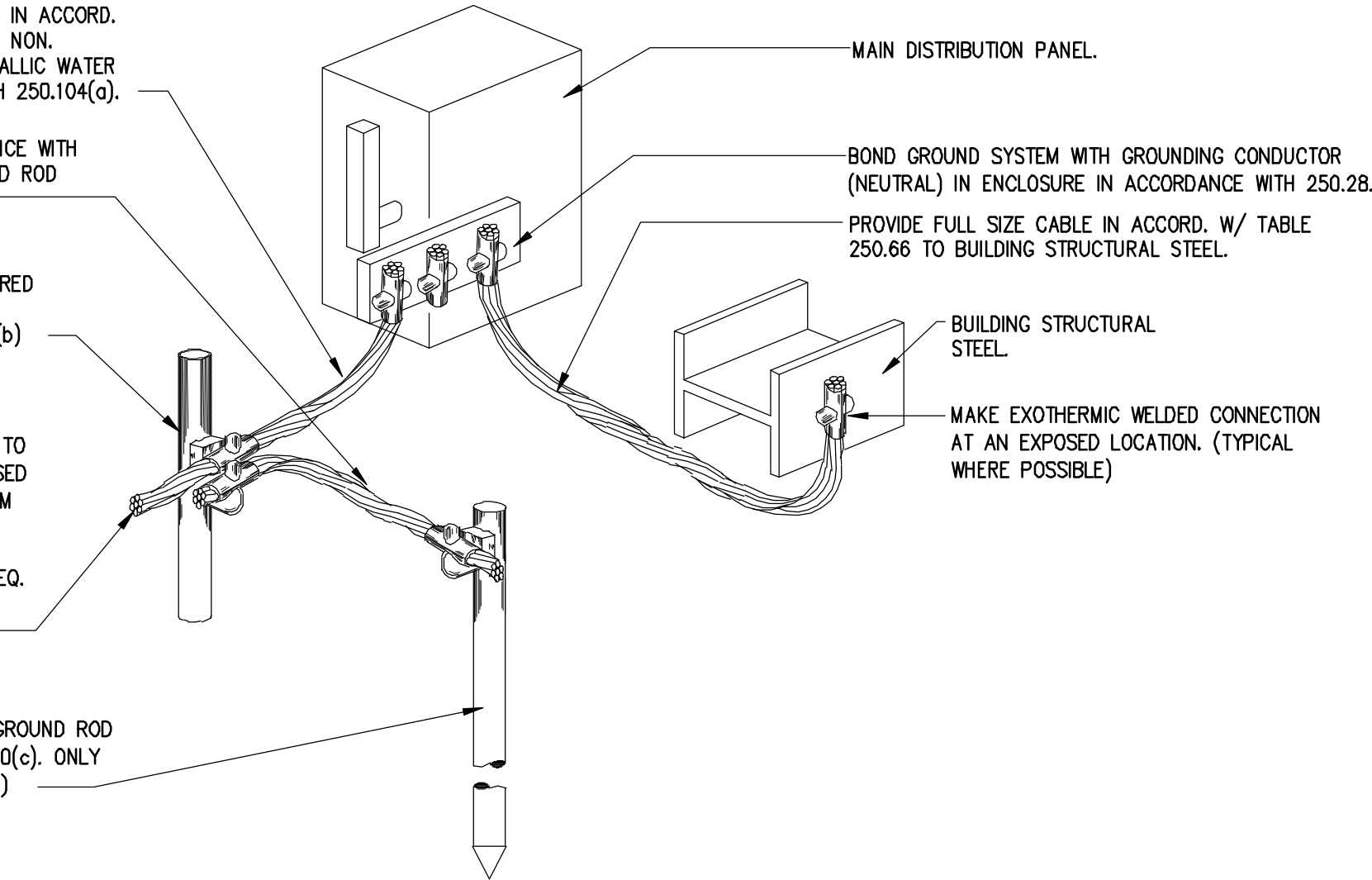
IF CONNECTION IS MADE IN ACCORDANCE WITH 250.50(a), PROVIDE #2 CU TO GROUND ROD IN ACCORDANCE W/ 250.50(a)(2)

BOND TO WATER PIPING IN BUILDING. PROVIDE BONDING JUMPERS AS REQUIRED IF ANY POSSIBLE PIPING ISOLATION IS PRESENT IN ACCORDANCE W/ 250.68(b)

CONTINUE BOND WIRE AT FULL SIZE TO ANY GAS PIPING (IF PRESENT), EXPOSED STRUCTURAL STEEL (IF ISOLATED FROM OTHER STRUCTURE), AND ALL SEPARATELY DERIVED ELECTRICAL SYSTEMS, OR OTHER SYSTEMS AS REQ. BY NEC 250.104, INCLUDING FIRE SPRINKLER SYSTEM.

5/8" ϕ x 10'-0" LONG COPPER CLAD GROUND ROD INSTALLED IN ACCORDANCE W/ 250.50(c). ONLY PROVIDE IF REQ. AS PER 250.50(a)(2)

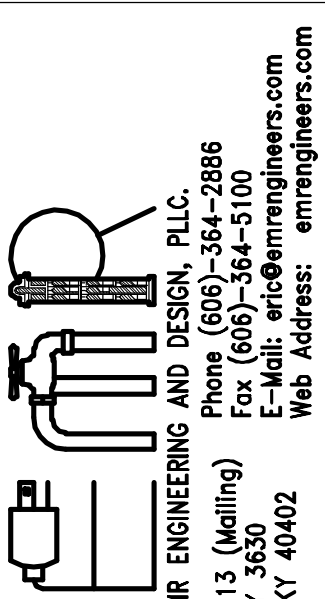
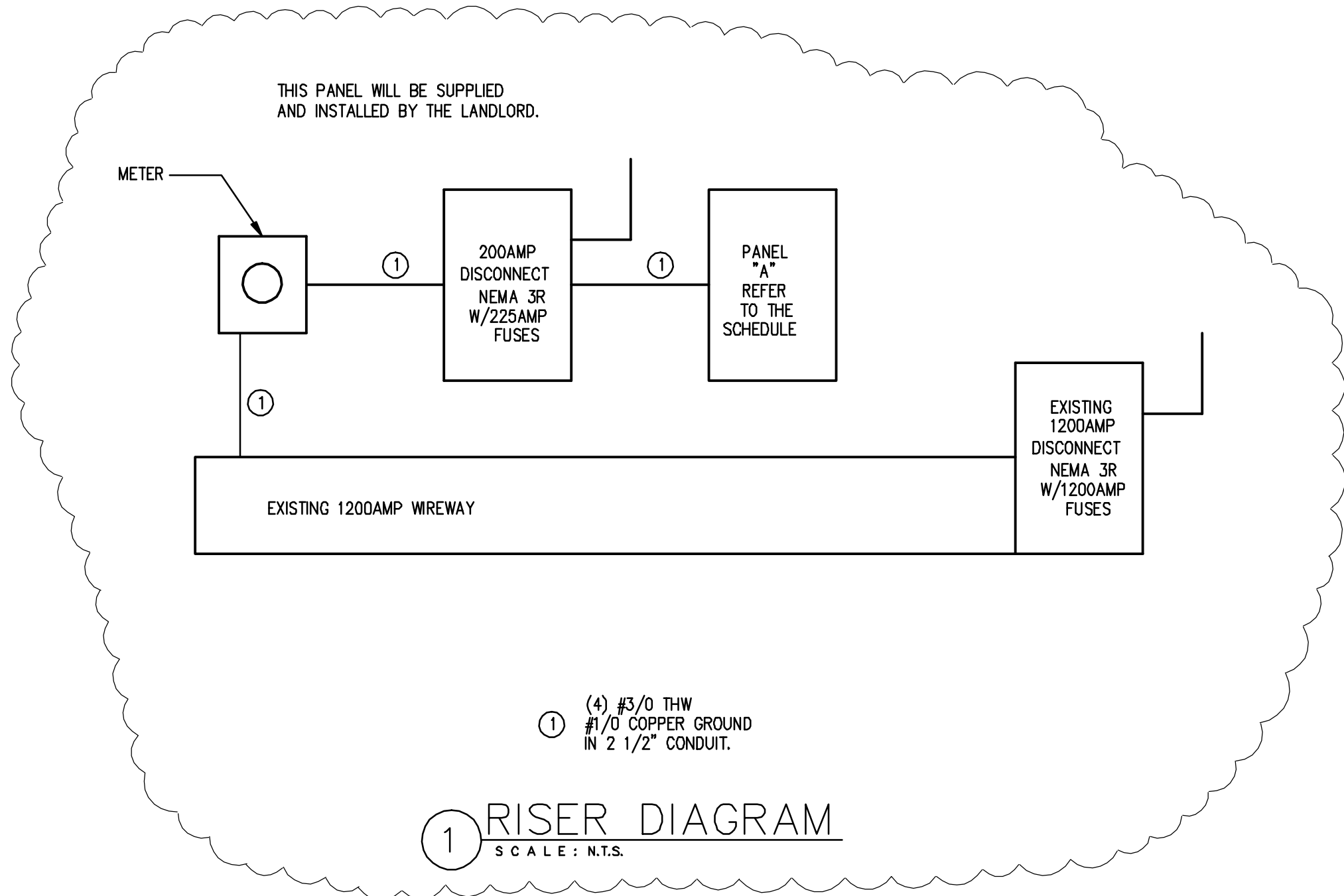
2 TYPICAL GROUNDING DETAIL
SCALE: N.T.S.



ELECTRICAL PANEL SCHEDULE

FEED POSITION			MOUNTING			PANEL NO. <u>A</u>		ENCLOSURE <u>200A M.L.O.</u>		
SERVICE VOLTAGE <u>120/208V/3PH/4W</u>			PANEL DESCRIPTION <u>200AMP PANEL</u>							
CB	WIRE & CONDUIT	LOAD SERVED	CKT#	LOAD WATTS			CKT#	LOAD SERVED	WIRE & CONDUIT	CB
				øA	øB	øC				
20A	2-#12 THW & 1 #12 G, 3/4" C.	WASHER	1	500			2	MAKERY QUADS	2-#12 THW & 1 #12 G, 3/4" C.	20A
20A-1B	2-#12 THW & 1 #12 G, 3/4" C.	DRYER BOOSTER FAN	3	720	100		4	FRONT AREA GEN. RECEPTS.	2-#12 THW & 1 #12 G, 3/4" C.	20A-1B
20A-1B	2-#12 THW & 1 #12 G, 3/4" C.	BACK AREA GEN. RECEPT.	5	720	180		6	POS QUADS	2-#12 THW & 1 #12 G, 3/4" C.	20A-1B
20A-1B	2-#12 THW & 1 #12 G, 3/4" C.	DISHWASHER	7	1400	1080		8	EW	2-#12 THW & 1 #12 G, 3/4" C.	20A-1B
20A-1B	2-#12 THW & 1 #12 G, 3/4" C.	MANAGER QUAD	9	540	360		10	STORAGE QUAD	2-#12 THW & 1 #12 G, 3/4" C.	20A-1B
20A-1B	2-#12 THW & 1 #12 G, 3/4" C.	HAND DRYER	11		360	1200	12	STORE FRONT SIGN	2-#12 THW & 1 #12 G, 3/4" C.	20A-1B
20A-1B	2-#12 THW & 1 #12 G, 3/4" C.	MAKERY MICROWAVE	13	1200	1200		14	I.T. RECEPTACLE	2-#12 THW & 1 #12 G, 3/4" C.	20A-1B
20A-1B	2-#12 THW & 1 #12 G, 3/4" C.	MAKERY MIXERS	15	180	975		16	CCTV, AMP & STEREO	2-#12 THW & 1 #12 G, 3/4" C.	20A-1B
20A-1B	2-#12 THW & 1 #12 G, 3/4" C.	WH & RECIRC RECEPT.	17	360	360	180	18	WINDOW RECEPTS.	2-#12 THW & 1 #12 G, 3/4" C.	20A-1B
20A-1B	2-#12 THW & 1 #12 G, 3/4" C.	DRUM HEATER	19	1752	180		20	RESTROOM RECEPT.	2-#12 THW & 1 #12 G, 3/4" C.	20A-1B
20A-1B	2-#12 THW & 1 #12 G, 3/4" C.	DRUM HEATER	21	180	1752		22	PANEL BOARD RECEPT.	2-#12 THW & 1 #12 G, 3/4" C.	20A-1B
20A-1B	2-#12 THW & 1 #12 G, 3/4" C.	MICROWAVE	23	180	1200		24	BACK COUNTER & TV'S	2-#12 THW & 1 #12 G, 3/4" C.	20A-1B
20A-1B	2-#12 THW & 1 #12 G, 3/4" C.	FRIDGE	25	500	540		26	MAKERY MICROWAVE	2-#12 THW & 1 #12 G, 3/4" C.	20A-1B
20A-1B	2-#12 THW & 1 #12 G, 3/4" C.	RTU RECEPTACLE	27	1200	360		28	LYE HEATER	2-#12 THW & 1 #12 G, 3/4" C.	20A-1B
20A-1B	2-#12 THW & 1 #12 G, 3/4" C.	BUBBLE RECEPTACLE	29		1752	180	30	DRYER	3-#10 THW & 1 #10 G, 3/4" C.	20A-2B
20A-1B	2-#12 THW & 1 #12 G, 3/4" C.	LINEAR LIGHTS	31	480	2250		32			20A-2B
20A-1B	2-#12 THW & 1 #12 G, 3/4" C.	TRACK LIGHTS	33	2250	1230		34	TRACK LIGHTS	2-#12 THW & 1 #12 G, 3/4" C.	20A-1E
20A-1B	2-#12 THW & 1 #12 G, 3/4" C.	BACK AREA LIGHTS	35	600	279		36	NIGHT LIGHT	2-#12 THW & 1 #12 G, 3/4" C.	20A-1E
20A-1B	2-#12 THW & 1 #12 G, 3/4" C.	EXISTING RTU-1	37	2436	50		38			20A-1E
20A-1B	2-#12 THW & 1 #12 G, 3/4" C.	EXISTING RTU-2	39	2436	2436		40	EXISTING RTU-2	4-#8 THW & 1 #10 G, 3/4" C.	20A-1E
20A-1B	2-#12 THW & 1 #12 G, 3/4" C.	EXISTING RTU-3	41	2436	2436		42			20A-1E
			TOTALS	15774	13621	13571				
PC	PHOTO CELL									
H	HACR BREAKER									
*	LOCK-ON BREAKER									
				TOTAL LOAD WATTS <u>42,966</u>						
TOTAL LOAD KVA/AMPS <u>43.0/119.4</u>				DEMAND <u>42,966</u>		PROTECTED LOAD-AMPS <u>149.3/200AT</u>				

E.C. TO VERIFY THE BREAKER AND WIRE CONNECTION REQUIREMENT FOR ALL ELECTRICAL EQUIPMENT PRIOR TO ANY INSTALLATION.



CONTRACTOR SHALL BE RESPONSIBLE FOR ALL DIMENSIONS AT THE JOB SITE. ANY DISCREPANCIES SHALL BE BROUGHT TO THE ATTENTION OF THE PROJECT COORDINATOR LISTED ON THE DRAWINGS.

THESE DRAWINGS AND SPECIFICATIONS ARE THE PROPERTY OF BUFF CITY SOAP LLC, AND MAY NOT BE USED, COPIED OR DUPLICATED WITHOUT WRITTEN CONSENT. ANY UNAUTHORIZED USE OR DISCLOSURE OF PROPRIETARY INFORMATION CONTAINED HEREIN MAY SUBJECT SUCH PERSON(S) TO CRIMINAL AND/OR CIVIL PENALTIES.

REMODEL TENANT FINISH FOR:

BUFF CITY SOAP
STREETS OF WEST PRIORITY
2050 NW LOWENSTEIN DR.
LEE'S SUMMIT, MO 64081



Date 05/05/21
Project No. 21170
Checked ROM

Sheet
ELECTRICAL PANEL
SCHEDULE, RISER
DETAILS AND NOTES

REVISIONS

E3