

Landscape Schedule

Symbol	Qty.	Botanical Name	Common Name	Min.Root	Min.Size	Caliper	Remarks
OVERSTORY TREES							
	55	Gleditsia triacanthos "Skyline"	Shademaster Honeylocust		3"	6" min. clear., ground to canopy	
	104	Platanus x acerifolia	London Plane Tree		3"	6" min. clear., ground to canopy	
	121	Acer x truncatum "Warrenred"	Pacific Sunset Maple		3"	6" min. clear., ground to canopy	
	53	Quercus bicolor	Swamp White Oak		3"	6" min. clear., ground to canopy	
	68	Acer griseum	Paperbark Maple		3"	6" min. clear., ground to canopy	
	36	Ulmus parvifolia	Lacebark Elm		3"	6" min. clear., ground to canopy	
EVERGREEN TREES							
	107	Juniperus chinensis "Keteleeri"	Keteleeri Juniper		8" ht.	symmetrical pyramidal form	
	78	Picea abies	Norway Spruce		8" ht.	symmetrical pyramidal form	
	101	Picea pungens	Colorado Blue Spruce		6" ht.	symmetrical pyramidal form	
ORNAMENTAL TREES							
	82	Cercis canadensis	Eastern Redbud		3"		
	20	Cornus florida "Cloud Nine"	Cloud 9 Dogwood		3"		
DECIDUOUS SHRUBS/GRASSES							
	101	Liriodie spicata "Silver Dragon"	Silver Dragon Liriodie	1 gal.		Plant @ 18" O.C.	
	80	Festuca ovina glauca	Dwarf Blue Fescue	1 gal.		Plant @ 18" O.C.	
	13	Abelia x grandiflora Kaleidoscope	Kaleidoscope Abelia	3 gal. 18" ht. min.		Plant @ 4' O.C.	
	138	Equisetum hyemale	Horsetail Reed	1 gal.		Plant @ 18" O.C.	
EVERGREEN SHRUBS							
	51	Juniperus chinensis "Spartan"	Spartan Juniper		5' ht.	Symmetrical pyramidal form	

Landscape Calculations/Requirements

Street Frontage: (For all Districts) One (1) tree shall be planted for each thirty (30) feet of street frontage, within 20' setback. REQUIREMENTS MET

Amenity Parking: (For all Districts) One parking stall per every 16 units. 160 total units.
10 Stalls required.
10 stalls provided.
REQUIREMENTS MET

Buffer Landscape: Medium Density Buffer (type B) provided on all West and South sides of development. Also, provided on north side of Amenity area as shown. REQUIREMENTS MET

Planting Notes

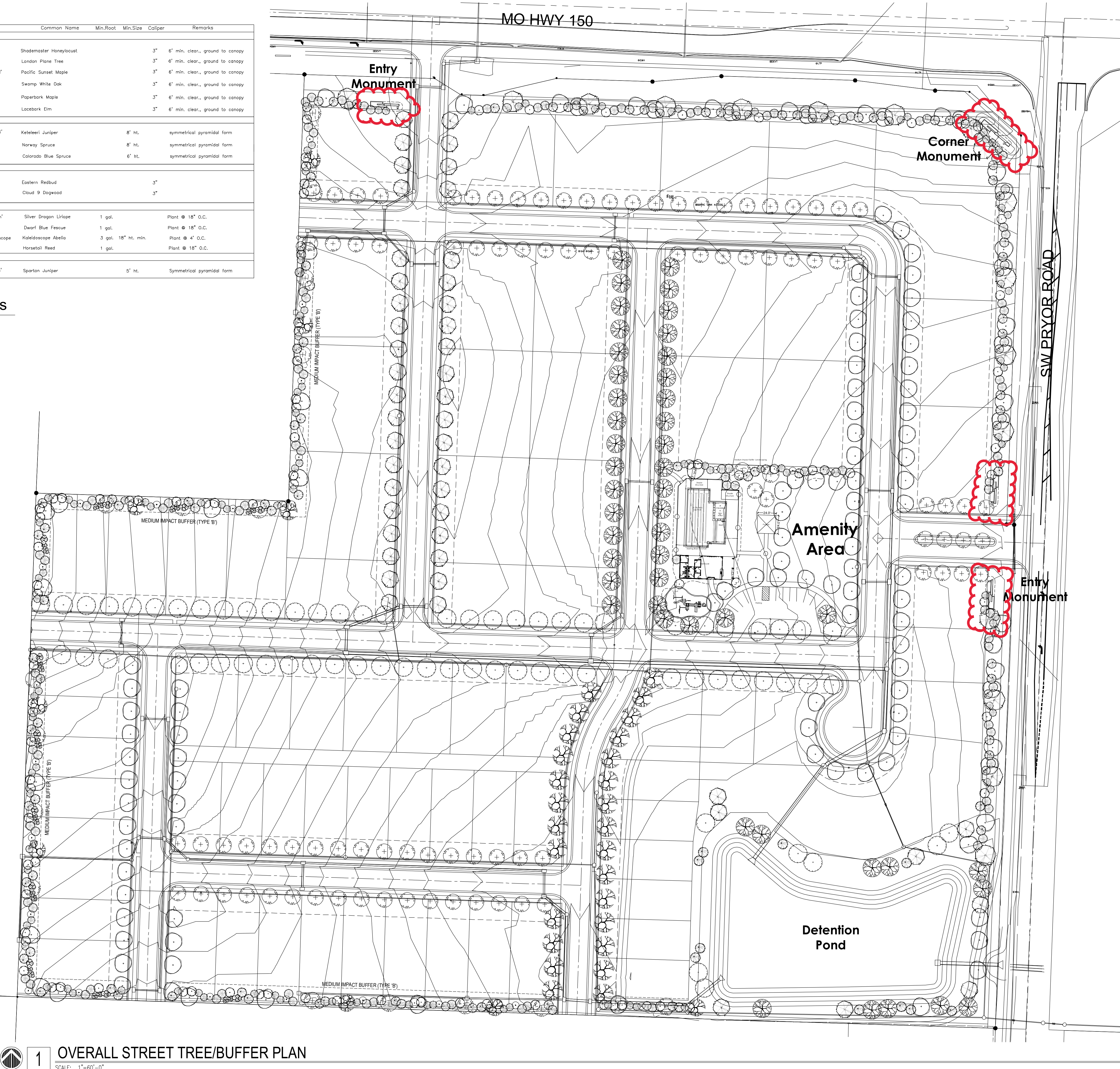
1. Location of all existing utilities needs to done before commencing work.
2. The planting plan graphically illustrates overall plant massings. Each plant species massing shall be placed in the field to utilize the greatest coverage of ground plane. The following applies for individual plantings:
 - a. Creeping groundcover shall be a minimum of 6" from paving edge.
 - b. All trees shall be a minimum of 3' from paving edge.
 - c. All plants of the same species shall be equally spaced apart and placed for best aesthetic viewing.
 - d. All shrubs shall be a minimum of 2' from paved edge.
3. Mulch all planting bed areas to a minimum depth of 3". Mulch individual trees to a minimum depth of 4".
4. Note: If plants are not labeled - they are existing and shall remain.
5. All landscaped areas in ROW shall be sodded and irrigated unless otherwise specified.

Materials:

1. Plant material shall be healthy, vigorous, and free of disease and insects as per AAN standards.
2. Shredded bark mulch installed at trees shall be finely chipped and shredded hardwood chips, consisting of pure wood products and free of all other foreign substances. Pine bark compost mulch installed at planting bed areas shall be free of all other foreign substances.

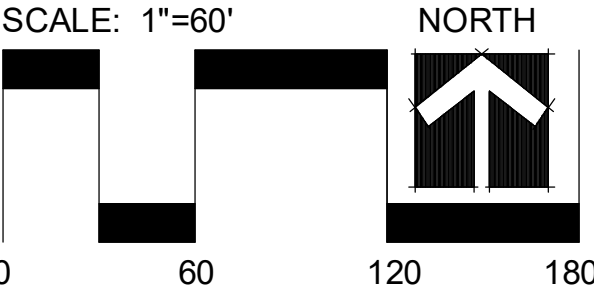
Installation:

1. All planting beds shall be amended with 1 cubic yard of peat moss per 1,000 square feet. Till peat moss into soil to a 6" depth. A 10-10-10 fertilizer shall be spread over all planting areas prior to planting, at a rate of 50 pounds per 2,000 square feet.
2. After plants have been installed, all planting beds shall be treated with Dacthal pre-emergent herbicide prior to mulch application.
3. Plant pit backfill for trees and shrubs shall be 50% peat or well composted manure and 50% topsoil.
4. Plant material shall be maintained and guaranteed for a period of one year after Owner's acceptance of finished job. All dead or damaged plant material shall be replaced at Landscape Contractor's expense.
6. Landscape contractor shall maintain all plant material until final acceptance, at which point the one year guarantee begins.

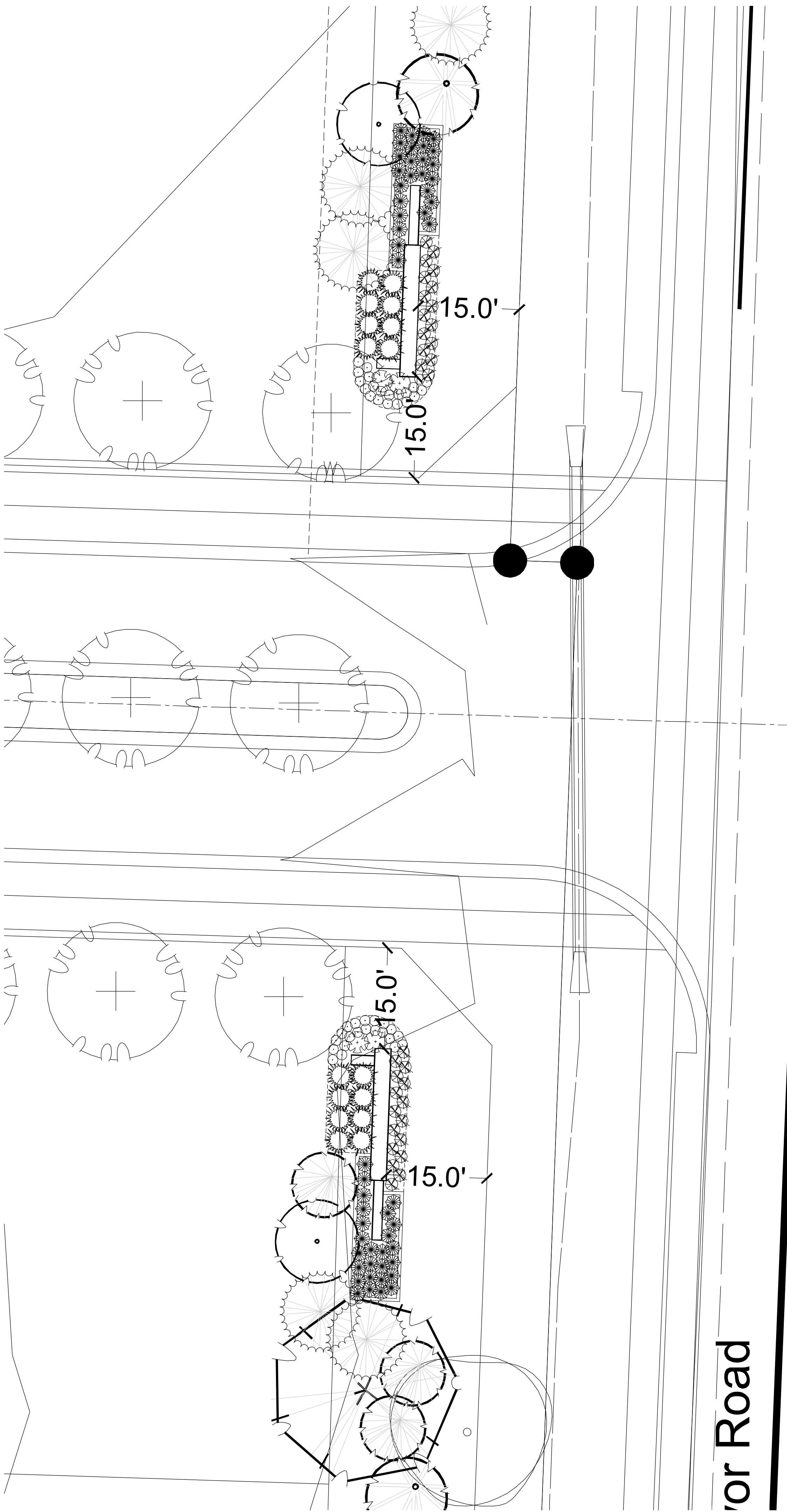


CLIENT
Summit Homes
120 SE 30th St
Lee's Summit, MO 64082

PROJECT
Osage
Highway 150 and
Pryor Road
Lee's Summit, MO

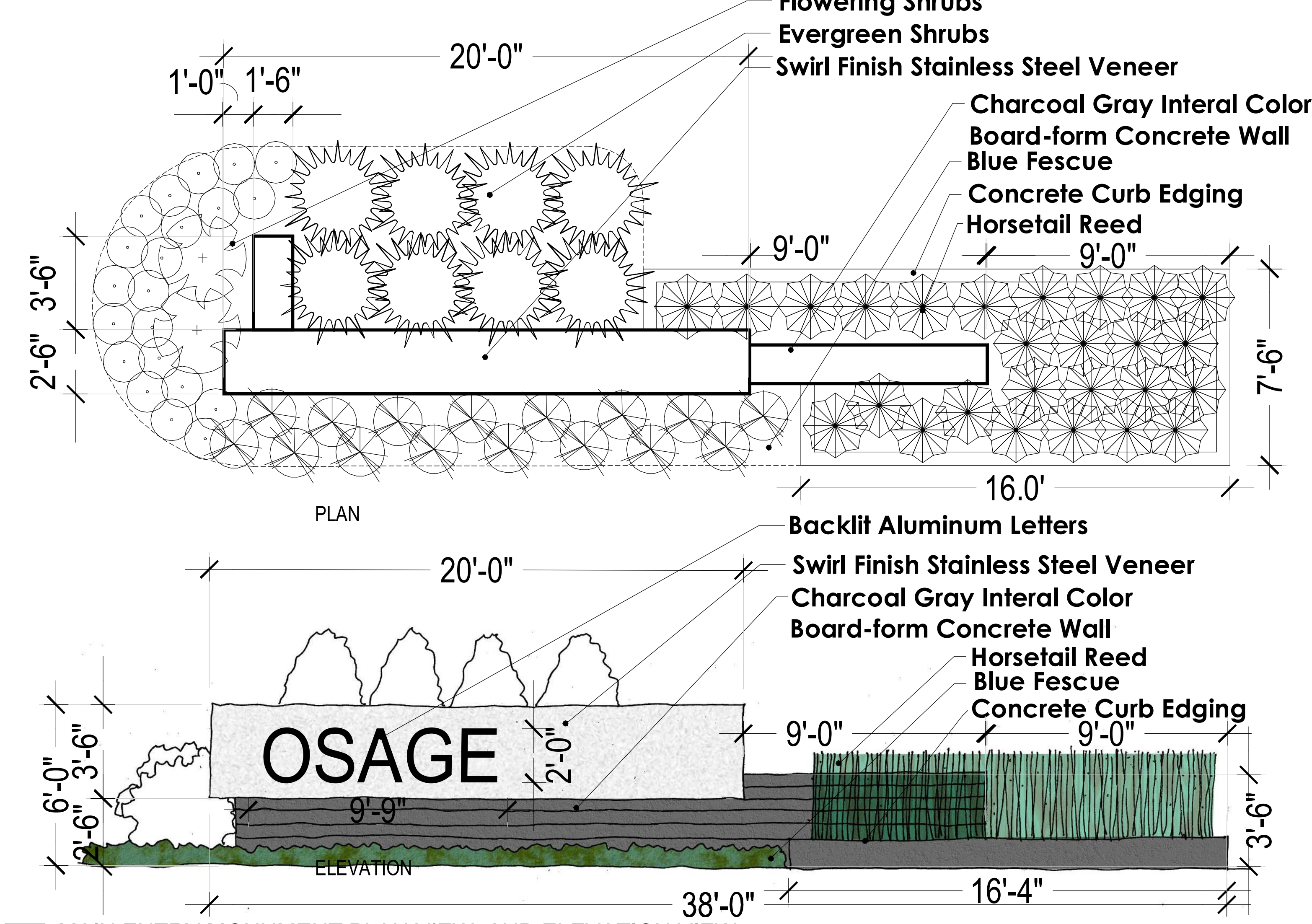


Date: 10.3.19
Project #: 482
Overall Plan



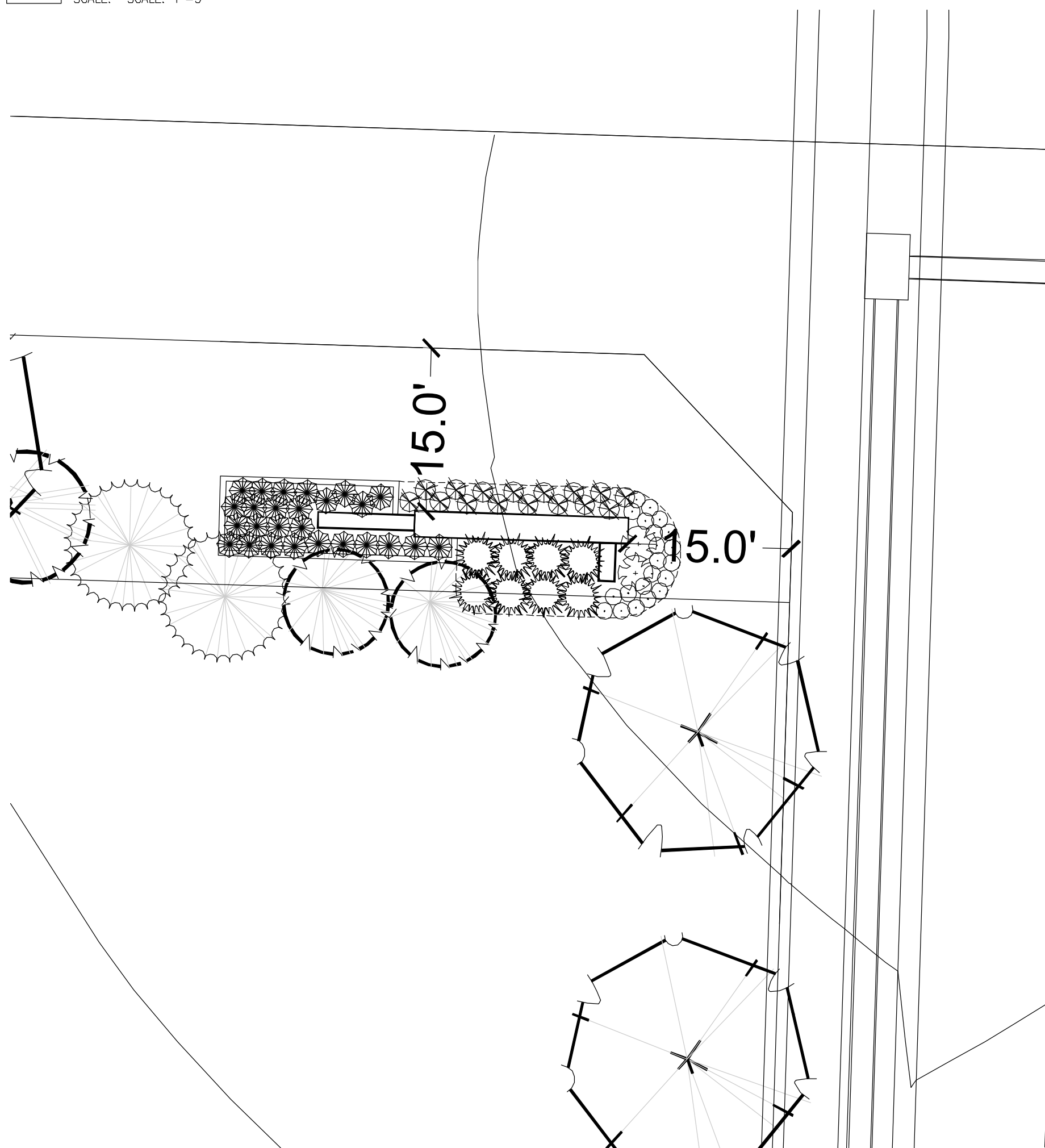
1 PRYOR ROAD ENTRY MONUMENT LANDSCAPE PLAN

SCALE: 1"=10'-0"



2 MAIN ENTRY MONUMENT PLAN VIEW, AND ELEVATION VIEW

SCALE: 1"=3'



3 CLAYTON PLACE ENTRY MONUMENT LANDSCAPE PLAN

SCALE: 1"=20'-0"

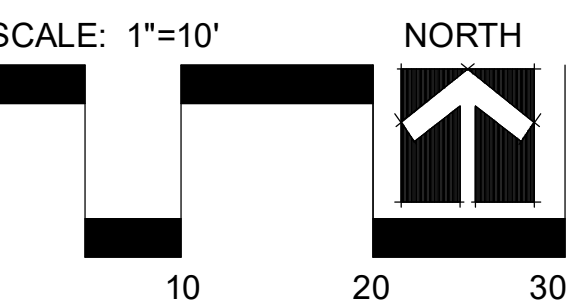
Landscape Schedule

Symbol	Qty.	Botanical Name	Common Name	Min.Root	Min.Size	Caliper	Remarks
OVERSTORY TREES							
	55	Gleditsia triacanthos "Skyline"	Shademaster Honeylocust			3"	6' min. clear., ground to canopy
	104	Platanus x acerifolia	London Plane Tree			3"	6' min. clear., ground to canopy
	121	Acer x truncatum "Warrenred"	Pacific Sunset Maple			3"	6' min. clear., ground to canopy
	53	Quercus bicolor	Swamp White Oak			3"	6' min. clear., ground to canopy
	68	Acer griseum	Paperbark Maple			3"	6' min. clear., ground to canopy
	36	Ulmus parvifolia	Lacebark Elm			3"	6' min. clear., ground to canopy
EVERGREEN TREES							
	107	Juniperus chinensis "Keteleeri"	Keteleeri Juniper		8' ht.		symmetrical pyramidal form
	78	Picea abies	Norway Spruce		8' ht.		symmetrical pyramidal form
	101	Picea pungens	Colorado Blue Spruce		6' ht.		symmetrical pyramidal form
ORNAMENTAL TREES							
	82	Cercis canadensis	Eastern Redbud			3"	
	20	Cornus florida "Cloud Nine"	Cloud 9 Dogwood			3"	
DECIDUOUS SHRUBS/GRASSES							
	101	Liriope spicata "Silver Dragon"	Silver Dragon Liriope	1 gal.			Plant @ 18" O.C.
	80	Festuca ovina glauca	Dwarf Blue Fescue	1 gal.			Plant @ 18" O.C.
	13	Abelia x grandiflora Kaleidoscope	Kaleidoscope Abelia	3 gal.	18" ht. min.		Plant @ 4' O.C.
	138	Equisetum hyemale	Horsetail Reed	1 gal.			Plant @ 18" O.C.
EVERGREEN SHRUBS							
	51	Juniperus chinensis "Spartan"	Spartan Juniper		5' ht.		Symmetrical pyramidal form

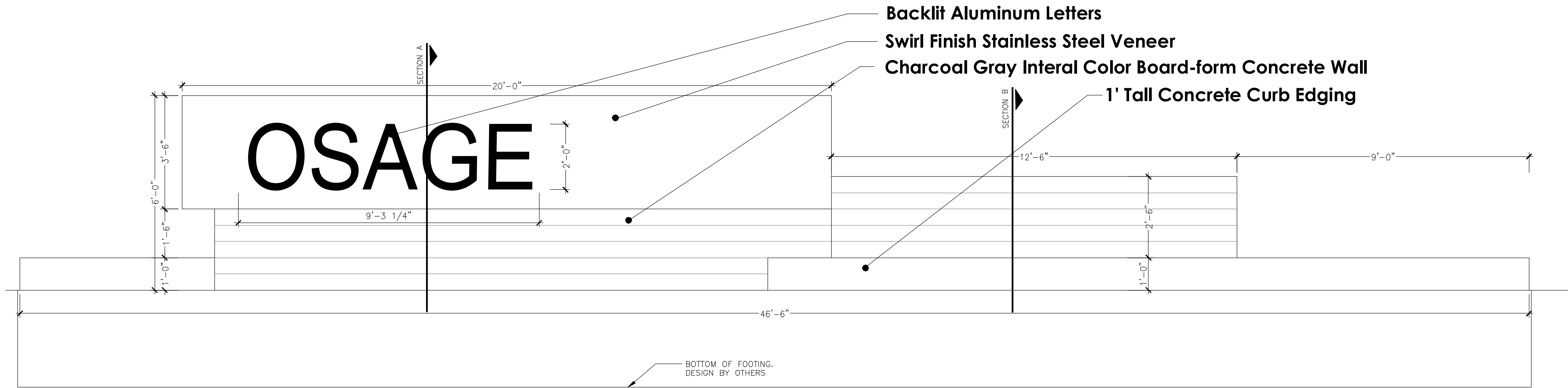


CLIENT
Summit Homes
120 SE 30th St
Lee's Summit, MO 64082

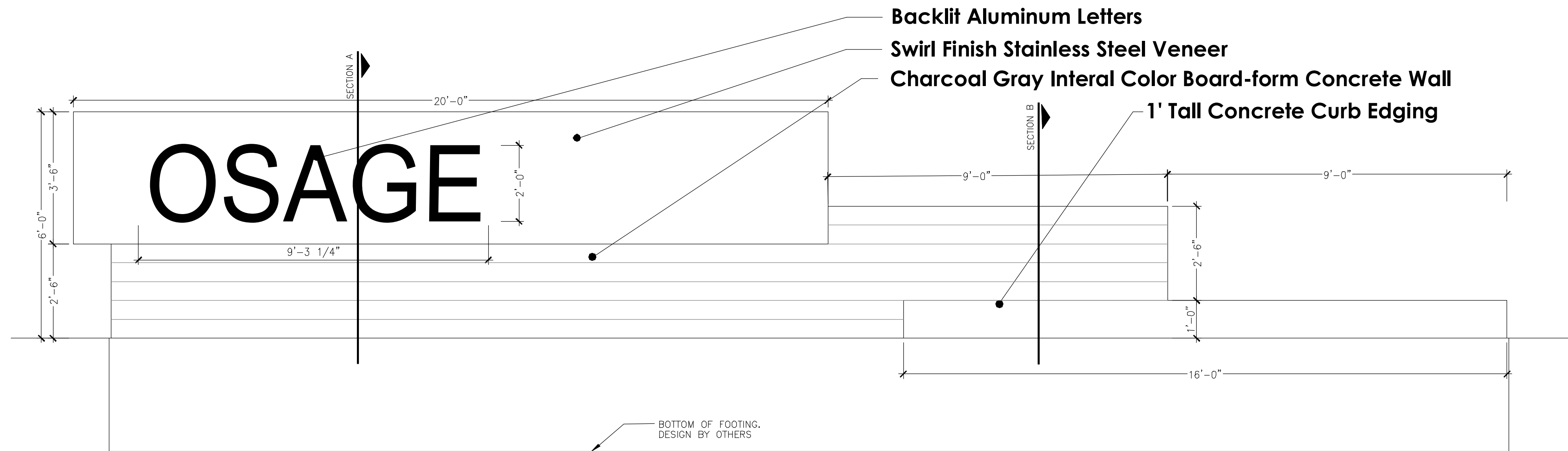
PROJECT
Osage
Highway 150 and
Pryor Road
Lee's Summit, MO



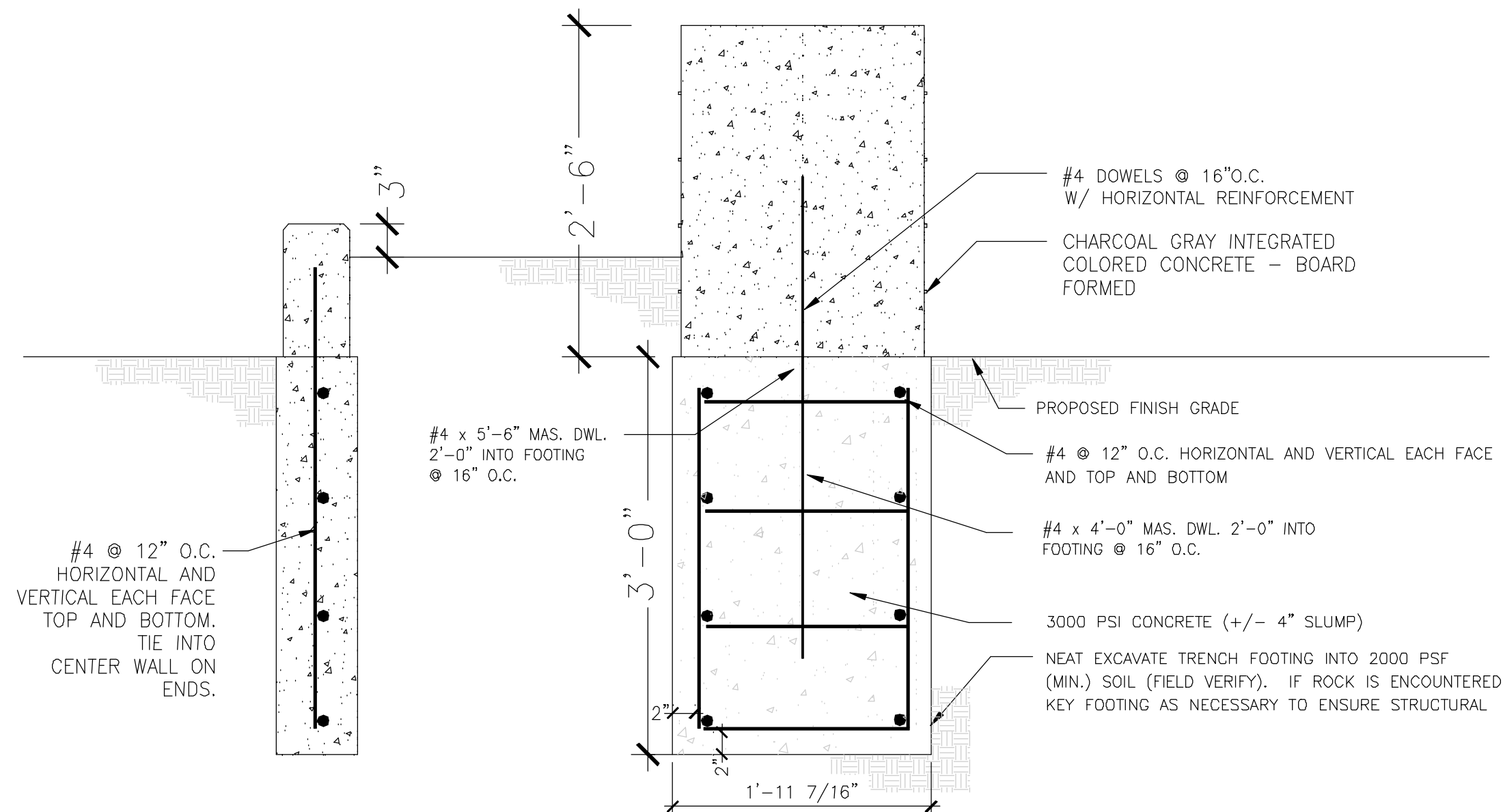
Date: 10.3.19
Project #: 482
Entry Monuments



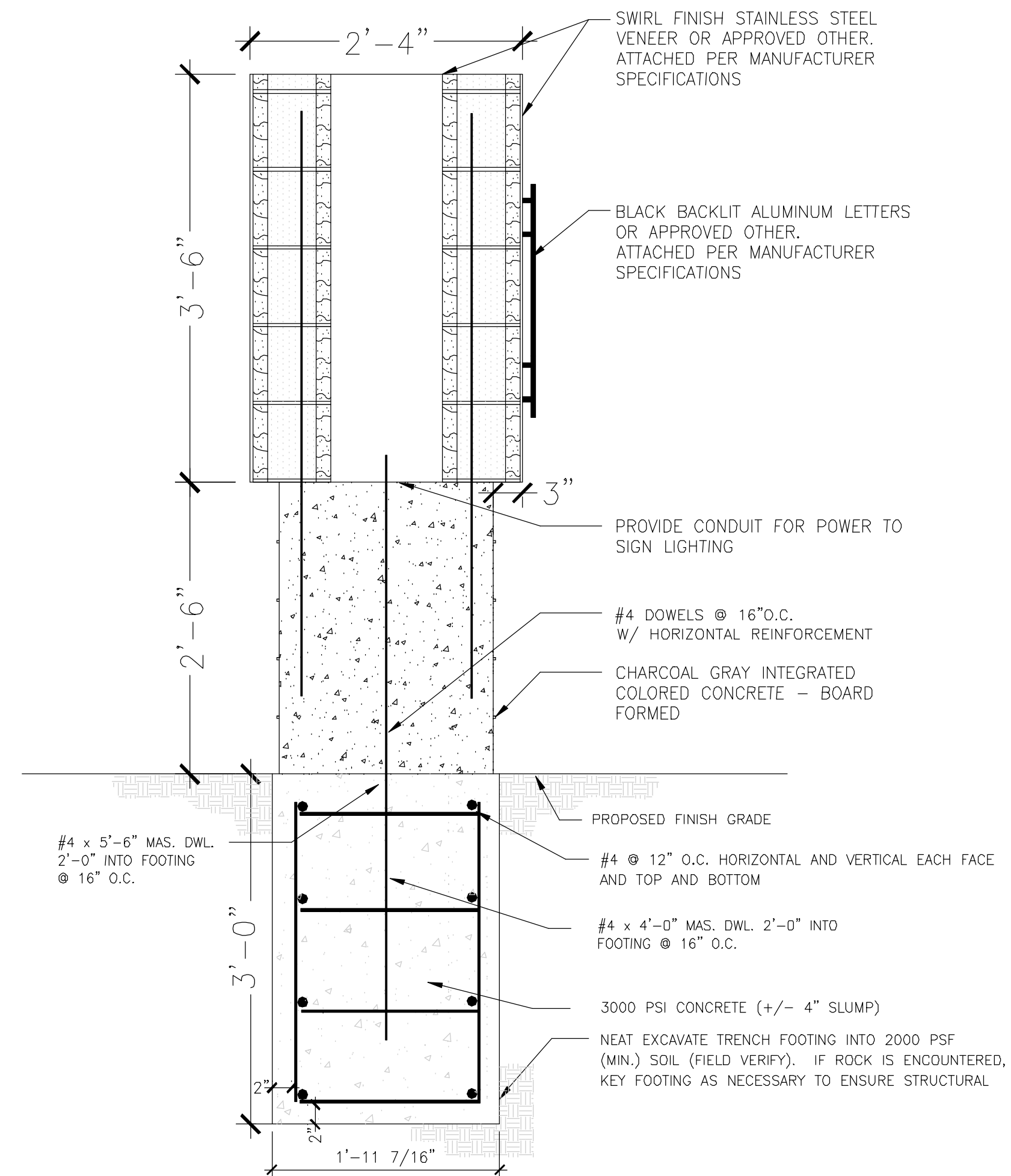
2 BOARD FORMED WALL IMAGE
SCALE: NTS



3 CORNER ENTRY MONUMENT ELEVATION DETAIL
SCALE: NTS



4 SECTION DETAILS FOR ENTRY MONUMENTS
SCALE: NTS

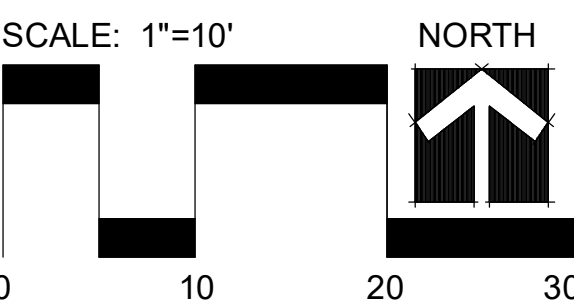


5 SECTION DETAILS FOR ENTRY MONUMENTS
SCALE: NTS



CLIENT
Summit Homes
120 SE 30th St
Lee's Summit, MO 64082

PROJECT
Osage
Highway 150 and
Pryor Road
Lee's Summit, MO



Date: 10.3.19
Project #: 482
Entry Monuments