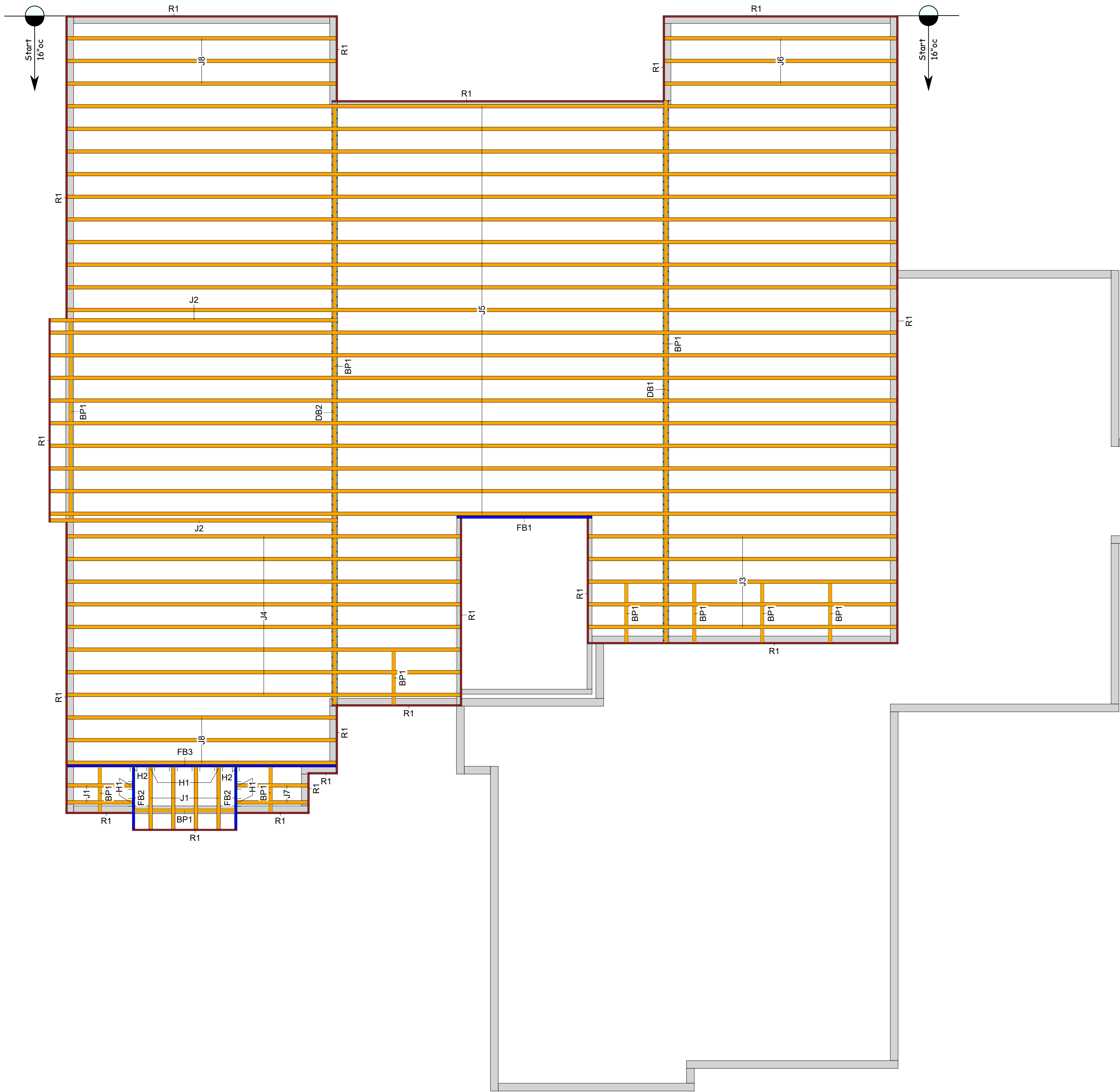


Layout Name
21-05495 McEntire Blueprint

Ground Floor



RELEASE FOR CONSTRUCTION
AS NOTED ON PLANS REVIEW
CODES ADMINISTRATION
LEE'S SUMMIT, MISSOURI

BY _____
DATE _____

- ☒ Conforms to Design Concept
☐ Conforms to Design Concept with Revisions Noted
☐ Non-Conforming; Revise and Resubmit

THIS SHOP DRAWING HAS BEEN REVIEWED FOR GENERAL CONFORMANCE WITH DESIGN CONCEPT ONLY AND DOES NOT RELIEVE THE FABRICATOR, VENDOR, OR ORIGINAL DESIGN ENGINEER OF RESPONSIBILITY FOR CONFORMANCE WITH DESIGN DRAWINGS, SPECIFICATIONS, AND APPLICABLE CODES, ALL OF WHICH HAVE PRIORITY OVER THIS SHOP DRAWING.

By: Date: 5/6/21
R.E.O. ENGINEERING, P.C.

2203 KILLARNEY LN
LEE'S SUMMIT, MO

- GENERAL NOTES:**
- 1.) See Attached Installation Guide
 - 2.) Care should be taken when setting i-joists to avoid plumbing drops and mechanical chases. (DO NOT CUT OR DRILL THROUGH I-JOISTS FLANGES)
 - 3.) All walls, headers and beams are to be adequately designed and supplied by others to support all loads applied to them
 - 4.) (Dealer) recommends gluing and nailing floor sheathing to i-joists
 - 5.) I-joist spacing is not to exceed spacing shown on placement plan.
 - 6.) All headers are assumed dropped below i-joist framing unless noted otherwise.
 - 7.) Solid blocking down to foundation is to be provided by others at all headers, beams and girder bearing points.
 - 8.) Provisions must be made by others to avoid excessive moisture content in lumber. Engineered wood products shall not be placed in any environment that will cause the moisture content of the wood to exceed 19%.
 - 9.) Construction loads such as stacking of drywall, plywood, shingles, masonry materials, mechanical equipment, etc. in any one concentrated area on i-joists is strictly prohibited. I-joists are not designed for these types of conditions.

Additional Notes

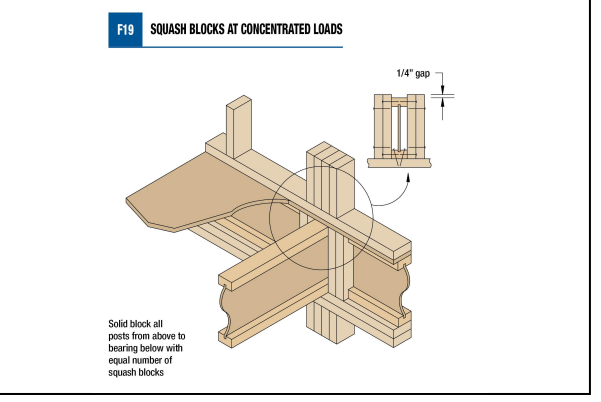
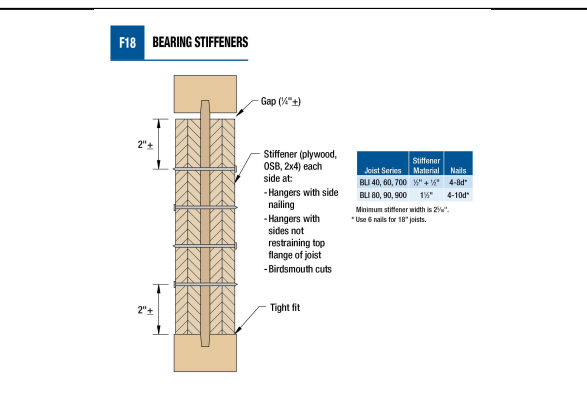
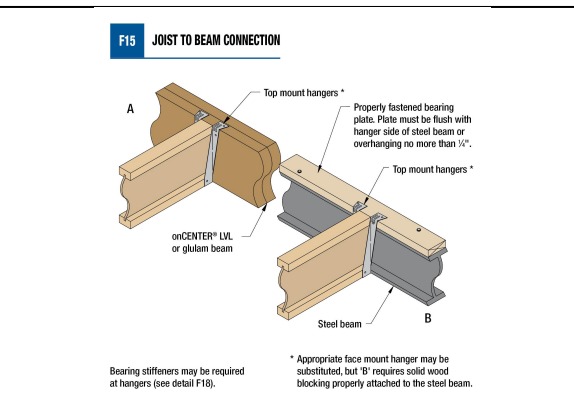
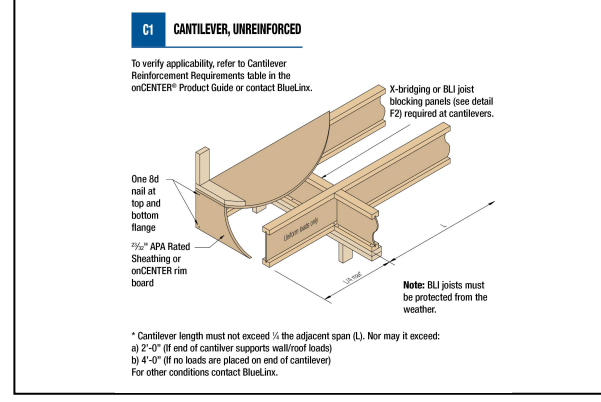
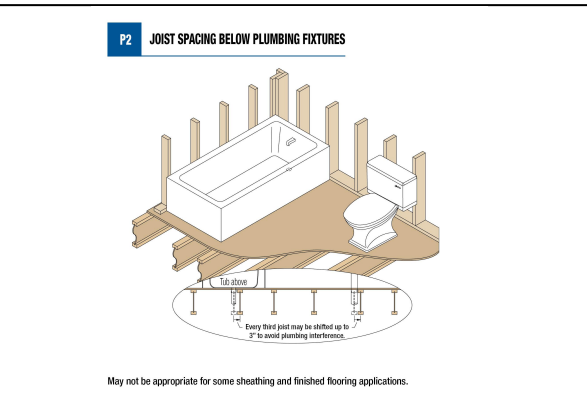
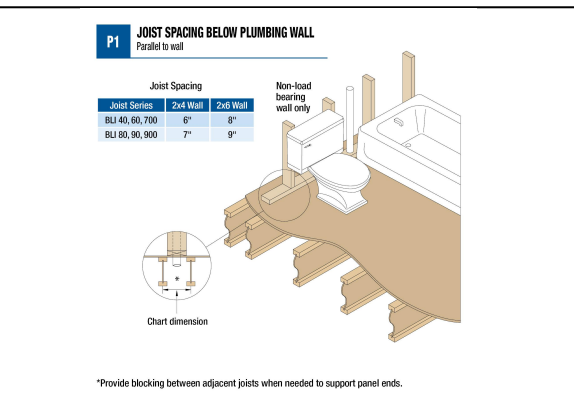
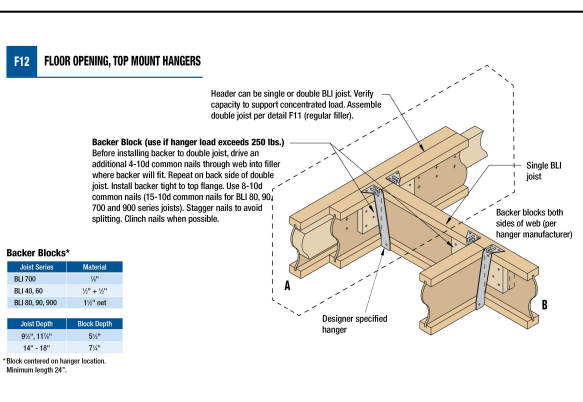
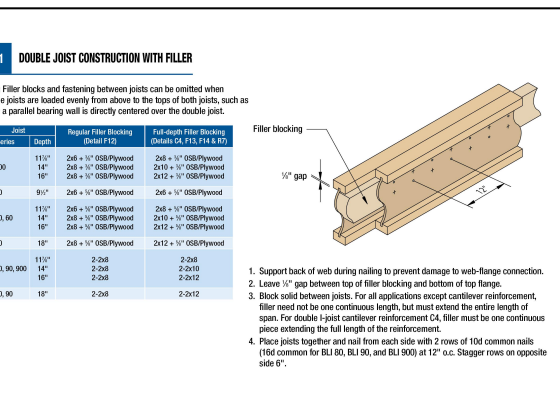
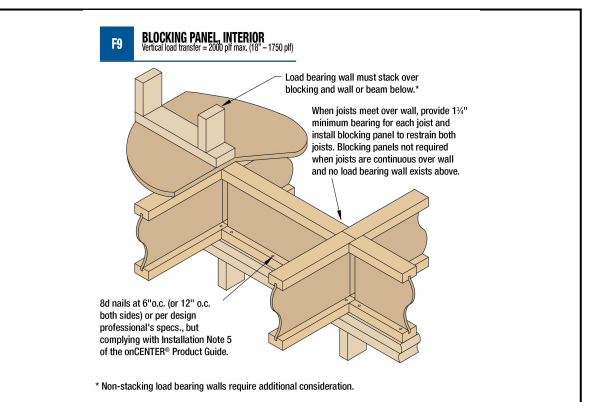
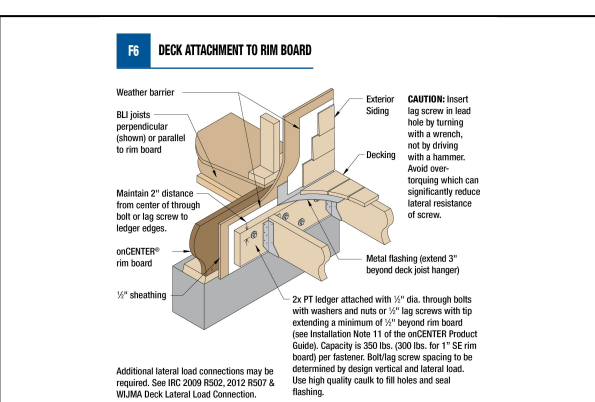
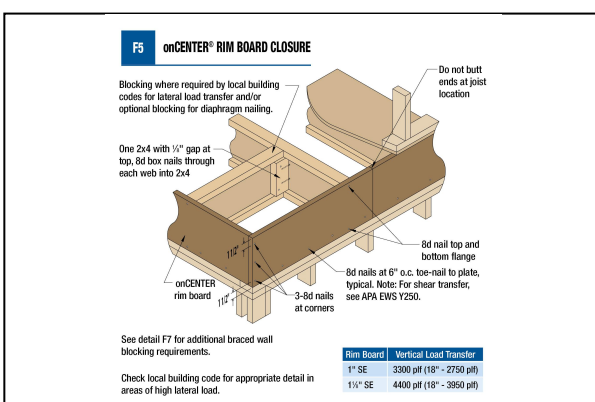
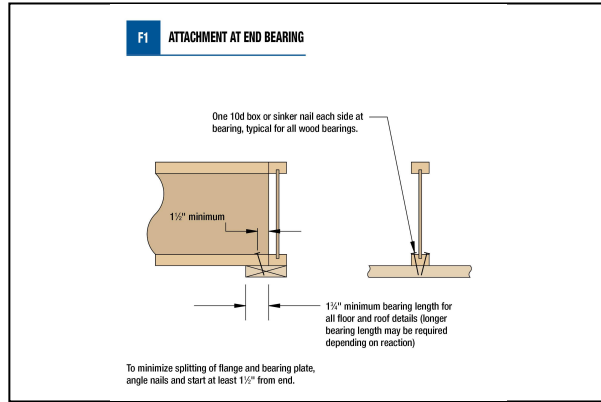
1. THIS PLACEMENT PLAN IS TO BE REVIEWED AND APPROVED BY THE ARCHITECT/ENGINEER OF RECORD PRIOR TO INSTALLATION OF EWP PRODUCTS
2. BLUELINK CAN'T BE LIABLE FOR CHANGES MADE TO THIS PLAN WITHOUT WRITTEN APPROVAL

Layout Scale 1/4" = 1'

Legend

- Wall onCENTER Rim Board SE 1.125 X 11.875
- BLI 40 11.875
- onCENTER 2.0E LVL 1.75 X 11.875
- 4 X 4 (Dropped)

| Ground Floor | | | | | | | |
|----------------|---|---------------------|--------|-------|-------|--------|--------|
| Joist | | | | | | | |
| Label | Description | Width | Depth | Qty | Plies | Pcs | Length |
| J5 | BLI 40 | 2.5 | 11.875 | | | 19 | 50-0-0 |
| J4 | BLI 40 | 2.5 | 11.875 | | | 8 | 24-0-0 |
| J3 | BLI 40 | 2.5 | 11.875 | | | 5 | 20-0-0 |
| J2 | BLI 40 | 2.5 | 11.875 | | | 2 | 18-0-0 |
| J8 | BLI 40 | 2.5 | 11.875 | | | 6 | 16-0-0 |
| J6 | BLI 40 | 2.5 | 11.875 | | | 3 | 14-0-0 |
| J7 | BLI 40 | 2.5 | 11.875 | | | 2 | 6-0-0 |
| J1 | BLI 40 | 2.5 | 11.875 | | | 6 | 4-0-0 |
| Blocking | | | | | | | |
| Label | Description | Width | Depth | Qty | Plies | Pcs | Length |
| BP1 | BLI 40 | 2.5 | 11.875 | LinFt | | Varies | 91-0-0 |
| LVL/LSL | | | | | | | |
| Label | Description | Width | Depth | Qty | Plies | Pcs | Length |
| FB3 | onCENTER 2.0E LVL | 1.75 | 11.875 | | | 1 | 16-0-0 |
| FB1 | onCENTER 2.0E LVL | 1.75 | 11.875 | | | 1 | 8-0-0 |
| FB2 | onCENTER 2.0E LVL | 1.75 | 11.875 | | | 2 | 4-0-0 |
| Rim Board | | | | | | | |
| Label | Description | Width | Depth | Qty | Plies | Pcs | Length |
| R1 | onCENTER Rim Board SE 1.125 X 11.875 | 1.125 | 11.875 | | | 18 | 12-0-0 |
| Hanger | | | | | | | |
| Label | Pcs | Description | Skew | Slope | | | |
| H1 | 8 | IUS2.56/11.88 (Min) | | | | | |
| H2 | 2 | IUS11 (Min) | | | | | |
| Beam By Others | | | | | | | |
| Label | Description | Width | Depth | Qty | Plies | Pcs | Length |
| DB2 | [Beam per Blueprint] | | | | | 1 | 36-0-0 |
| DB1 | [Beam per Blueprint] | | | | | 1 | 32-0-0 |



BlueLink Corporation

1727 Warren St.
North Kansas City, MO. 64116
Phone: (816) 842-3367

VISIT US ON THE WEB AT: <https://bluelinkco.com>

Builder
OWEN LUMBER

Layout Name
21-05495 McEntire Blueprint

Shipping
Plan # SF-7020

Created
May 12, 2021

Revised
May 12, 2021

Designer
Scott Van Cleave

Ground Floor

Design Method ASD (USA)
Building Code IRC 2018

Floor

| | |
|---------------------------|-----|
| Loads | 40 |
| Live | 10 |
| Dead | |
| Deflection Joist | |
| LL Span L/ | 480 |
| TL Span L/ | 240 |
| Deflection Flush Girder | |
| LL Span L/ | 480 |
| TL Span L/ | 240 |
| Deflection Dropped Girder | |
| LL Span L/ | 480 |
| TL Span L/ | 240 |
| Deflection Header | |
| LL Span L/ | 480 |
| TL Span L/ | 240 |
| Decking | |
| Decking | |

OSB
23/32 APA Rated Studs-
Floor
Nailed & Glued
Fasterer
Vibration
Ceiling: Gypsum 1/2"

SHEET
1 OF 1