

TENANT FINISH

840 Blue Parkway
Lee's Summit, Missouri

ISSUED FOR:

Permit: 18 May, 2021

Steve E. Berry, PE

Consulting Engineer
Mechanical • Electrical • Plumbing

10463 S. Ellen
Mulvane, Kansas 67110
316.347.1248

EAL



/21

FLOOR PLANS
PLUMBING & ELECTRICAL

PE-1

Project No.: 21108

copyright 2021

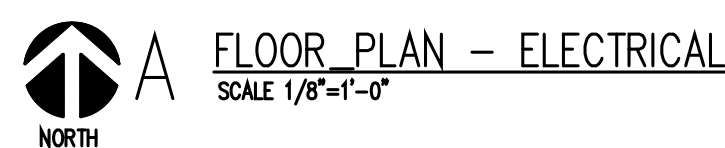
1. THE ENTIRE ELECTRIC INSTALLATION SHALL BE IN ACCORDANCE WITH THE 2017 NATIONAL ELECTRIC CODE.
2. ALL CONDUITS SHALL CARRY COPPER AND SHALL NOT BE SMALLER THAN #12 A.W.G. ALL CONDUCTORS #10 A.W.G. AND SMALLER SHALL BE SOID.
3. ALL CONDUIT SHALL BE SIZED IN ACCORDANCE WITH THE LATEST NATIONAL ELECTRIC CODE TABLES. MINIMUM CONDUIT SIZES SHALL BE 1/2", EXCEPT LOW VOLTAGE CONTROL WIRING.
4. CONDUCTORS FOR POWER CIRCUITS SHALL BE IN EMT CONDUIT IN ALL AREAS UNLESS NOTED OTHERWISE. METAL CLAD CABLE MAY BE USED IN AREAS WHERE CONDUITS ARE NOT EXPOSED.
5. ALL CONDUIT, JUNCTION BOXES, ETC. ABOVE CEILING SHALL BE SUPPORTED FROM STRUCTURE.

INTERIOR DOMESTIC WATER: TYPE "L" RIGID COPPER WITH SOLDER TYPE WROUGHT COPPER FITTINGS. PROVIDE NO LEAD SOLDER.

INTERIOR SANITARY WASTE AND VENT: PVC WASTE/VENT WITH PVC FITTINGS, ABS
OPTIONAL. INSTALLED IN ACCORDANCE WITH LOCAL CODES.

DOMESTIC WATER PIPE INSULATION: FLEXIBLE ELASTOMERIC THERMAL INSULATION, EXPANDED CLOSED CELL OR MOLDED SECTIONAL FIBEROUS GLASS WITH FACTORY APPLIED, UL LISTED VAPOR BARRIER JACKET, BOTH WITH A FLAME SPREAD OR 25 OR LESS AND A THERMAL RESISTANCE VALUE OF 3.6 - 4.5 (HR) (SQFT) (F° IN.) PER BTU.

1. THE ENTIRE PLUMBING INSTALLATION SHALL BE IN ACCORDANCE WITH THE 2018 INTERNATIONAL PLUMBING CODE.
2. PROVIDE ACCESS DOORS WHERE INDICATED ON DRAWINGS AND/OR AS REQUIRED TO PROPERLY OPERATE, ADJUST AND MAINTAIN ALL VALVES AND EQUIPMENT. VERIFY EXACT LOCATION AND TYPE WITH ARCHITECT PRIOR TO INSTALLATION. COORDINATE INSTALLATION WITH OTHER TRADES.
3. PROVIDE SHUTOFF VALVES AT EACH PIECE OF EQUIPMENT AND AS INDICATED ON DRAWINGS.
4. SLOPE ALL WATER PIPING SO ENTIRE SYSTEM CAN BE DRAINED.
5. ALL SANITARY PIPING SHALL BE SLOPED A MINIMUM OF 1/4" PER FOOT.
6. EACH PLUMBING FIXTURE SHALL BE PROVIDED WITH CW AND HW SUPPLIES AND SHUTOFF VALVES AS APPROPRIATE. PROVIDE P-TAP OF SIZE AND LENGTH AS REQUIRED BY CODE OR AS INDICATED ON THESE DRAWINGS. VENT EACH FIXTURE AS REQUIRED.



* CONNECTION SIZES THE SAME WHETHER STANDARD OR HANDICAP FIXTURE.

