

LENGTH DIAGRAM

Total Line Lengths:

Ridges = 103 ft

Hips = 64 ft

Valleys = 84 ft

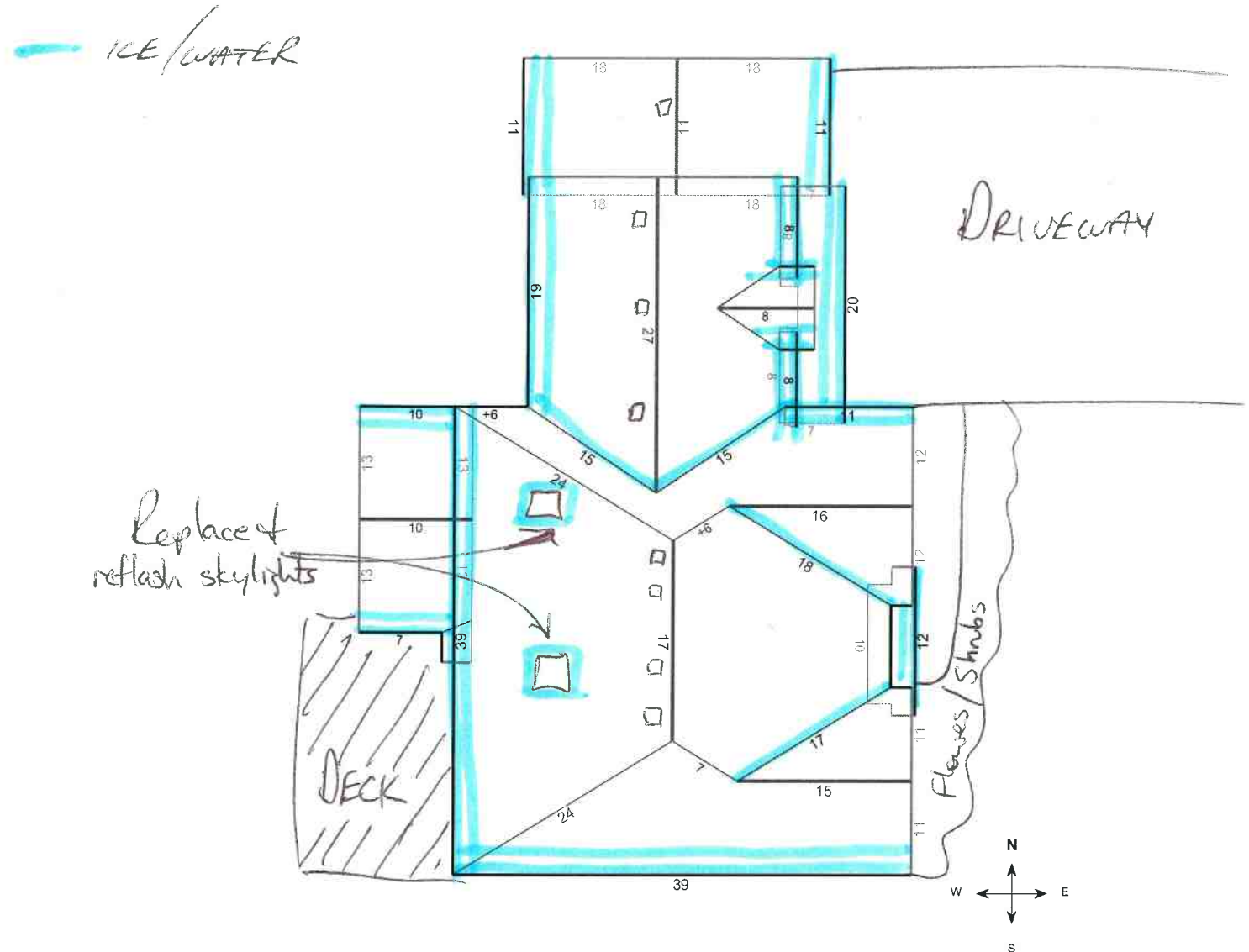
Rakes = 161 ft

Eaves = 222 ft

Flashing = 40 ft

Step flashing = 82 ft

Parapets = 0 ft



Note: This diagram contains segment lengths (rounded to the nearest whole number) over 5.0 Feet. In some cases, segment labels have been removed for readability. Plus signs preface some numbers to avoid confusion when rotated (e.g. +6 and +9).