

1120 N 18th Street • Omaha 68102  
 402.341.6077 • 402.341.7654 fax  
 This design and all material appearing hereon constitute the original unpublished work of Omaha Neon Sign Co., Inc. and may not be duplicated, used or disclosed without written consent.

**DRAWING # : SitePlan**  
**PROJECT ID: 25441**

**SALES PERSON: andye nelson**  
**DRAWN BY: wes stephens**

**DATE: 03.31.21**  
*Revised:*  
**DATE: 000000**


**INSPECTED BY:**

**SCOOTER'S**  
**COFFEE DRIVE-THRU**  
 707 NE Rice Rd  
 LEE'S Summit, MO

**NOTICE:**  
 ALL GRAPHIC REPRODUCTIONS ARE SUBJECT TO APPROVAL BY THE AUTHORIZED CLIENT, AS OF APPROVAL BY THE UNDERSIGNED AND DATED PRIOR TO ANY FABRICATION OF PRODUCT. OMAHA NEON SIGN COMPANY, INC. HOLDS ALL AGREEMENTS FINAL AND TO CLIENT APPROVAL.

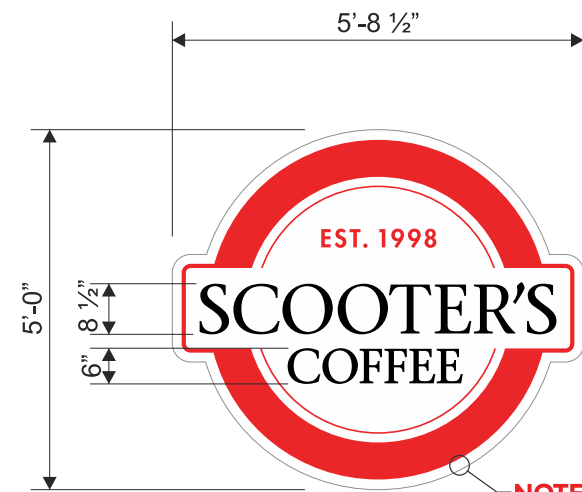
Signed \_\_\_\_\_ Date \_\_\_\_\_  
 Sales Rep. \_\_\_\_\_ Date \_\_\_\_\_

This sign is intended to be installed in accordance with the requirements of Article 600 of the National Electric Code and/or other applicable local codes. This includes proper grounding and bonding of the sign.



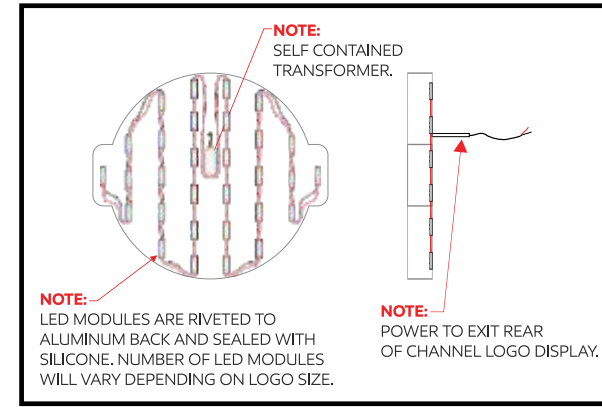
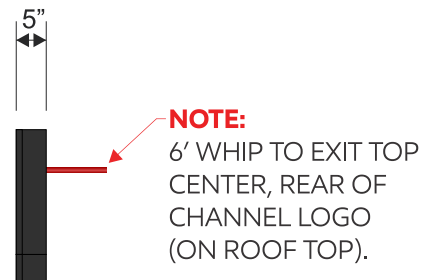


**ILLUMINATED CHANNEL LOGO**  
SCALE: 3/8" = 1'-0"



**28.6 Sq. Ft.**

**NOTE:** ALUM. RETAINERS. FACE OF RETAINERS ARE TO BE PAINTED WHITE AND RETURNS ARE TO BE PAINTED BLACK.



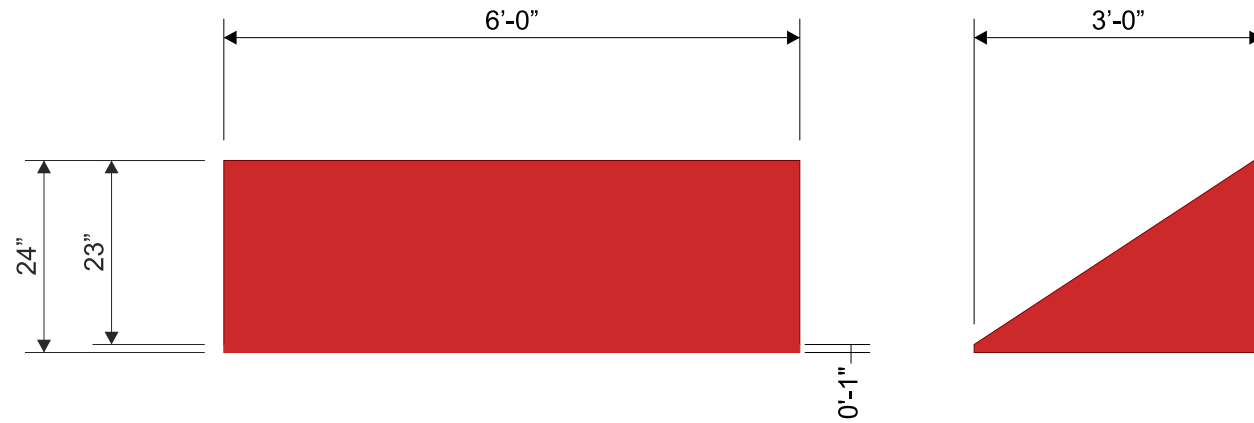
**2 EXTERIOR ELEVATIONS**  
scale: 1/4" = 1'-0"

<b>SCOOTER'S COFFEE DRIVE-THRU</b>	
<b>Illuminated Channel Logo</b>	
<b>RETURNS:</b>	5 Inch Deep .050 Blk. Pre-Finished Aluminum
<b>BACKS:</b>	.063 White Pre-Finished Aluminum
<b>FACES:</b>	3/16 Inch White Acrylic
<b>VINYL:</b>	(as noted)
<b>RETAINERS:</b>	Alum. Ptd Two Tone: White Face - Black Return
<b>ILLUMINATION:</b>	White Hanley LED's

**3M Series 230**  
TRANSLUCENT FILM

LT. TOMATO RED  
230-43

BLACK  
230-22



**2 EXTERIOR ELEVATIONS**  
 scale: 1/4" = 1'-0"

**SCOOTER'S COFFEE DRIVE-THRU**  
**Awning Display**

**FRAME:** 1"x 1" ALUM. Sq. TUBE FRAME (Painted Black)  
**SKIN:** LOGO RED SUNBRELLA MATERIAL #6066-0000  
**GRAPHICS:** (As Noted)

**INSTALLATION:**  
 PANEL IS TO BE MOUNTED TO FASCIA USING PROPER HARDWARE AND FASTENERS (NON-CORROSIVE).  
 14GA. Z-CLIPS - #12 SELF TAPPING TEKS - 3/16" 0 x 1 1/2" TAP CONS TO EXISTING FASCIA.

**Omaha Neon Sign Co., Inc.**  
 1120 N 18th Street • Omaha 68102  
 402.341.8077 • 402.341.7654 fax  
 This design and all material appearing hereon constitute the original unpublished work of Omaha Neon Sign Co., Inc. and may not be duplicated, used or disclosed without written consent.

**DRAWING # : 127141**  
**PROJECT ID: 25441**

**SALES PERSON: andye nelson**  
**DRAWN BY: wes stephens**

**DATE: 03.31.21**  
**Revised:**  
**DATE: 000000**

INSPECTED BY:

**SCOOTER'S COFFEE DRIVE-THRU**  
 707 NE Rice Rd  
 LEE's Summit, MO

**NOTICE:**

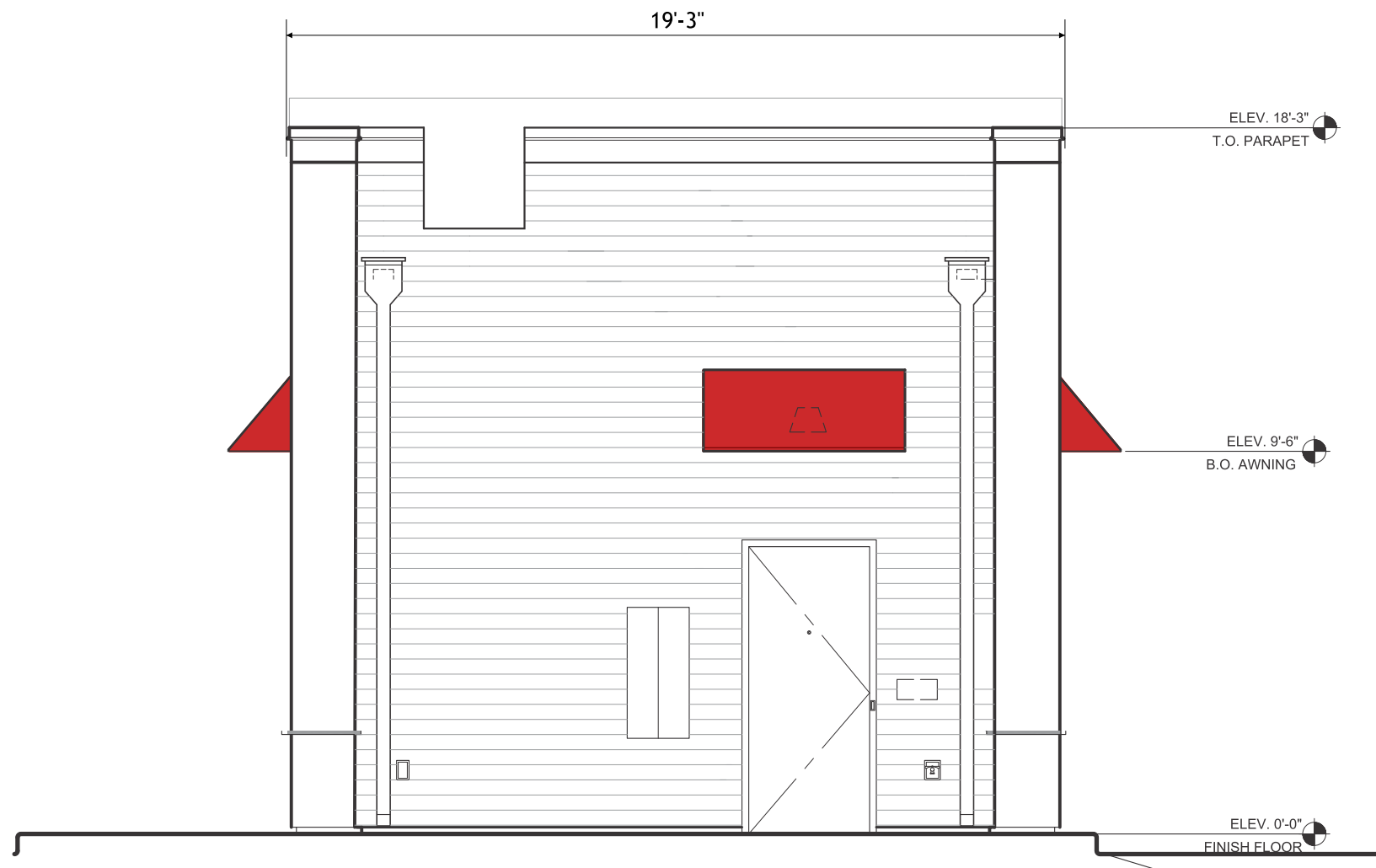
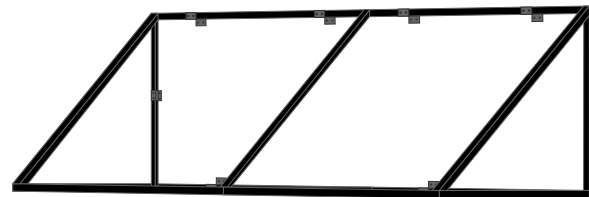
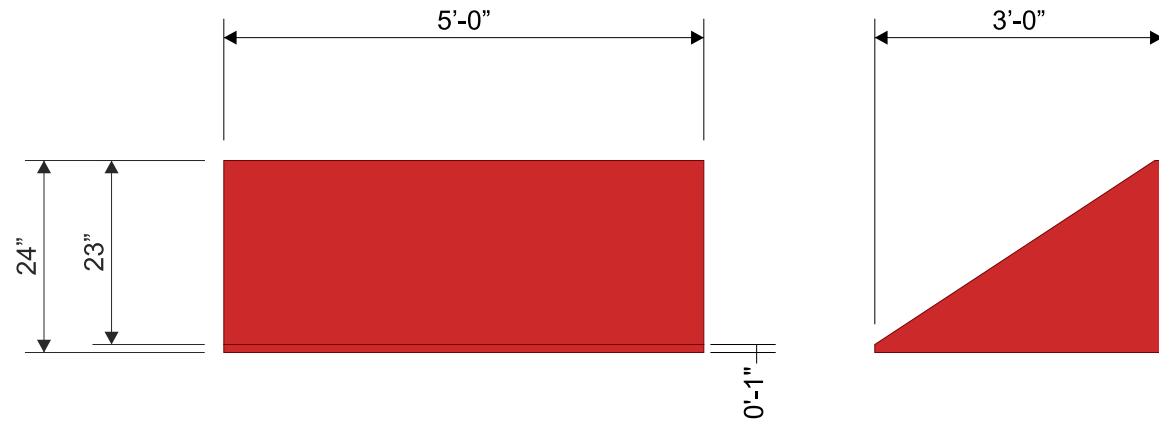
ALL GRAPHIC REPRODUCTIONS ARE SUBJECT TO APPROVAL BY AUTHORIZED CLIENT, AS OF APPROVAL BY THE UNDERSIGNED AND DATED PRIOR TO ANY FABRICATION OF PRODUCT. OMAHA NEON SIGN COMPANY, INC. HOLDS ALL AGREEMENTS FINAL AND TO CLIENT APPROVAL.

Signed \_\_\_\_\_ Date \_\_\_\_\_  
 Sales Rep. \_\_\_\_\_ Date \_\_\_\_\_

This sign is intended to be installed in accordance with the requirements of Article 600 of the National Electric Code and/or other applicable local codes. This includes proper grounding and bonding of the sign.



**NON-ILLUMINATED AWNING DISPLAY:**  
**SCALE: 1/2" = 1'-0"**



**1** EXTERIOR ELEVATIONS  
 scale: 1/4" = 1'-0"

**SCOOTER'S**  
**COFFEE DRIVE-THRU**

**Awning Display**

**FRAME:** 1"x 1" ALUM. Sq. TUBE FRAME (Painted Black)  
**SKIN:** LOGO RED SUNBRELLA MATERIAL #6066-0000  
**GRAPHICS:** (As Noted)

**INSTALLATION:**  
 PANEL IS TO BE MOUNTED TO FASCIA USING PROPER HARDWARE AND FASTENERS (NON-CORROSIVE).  
 14GA. Z-CLIPS - #12 SELF TAPPING TEKS - 3/16" 0 x 1 1/2" TAP CONS TO EXISTING FASCIA.

**Omaha Neon Sign Co., Inc.**  
 1120 N 18th Street • Omaha 68102  
 402.341.6077 • 402.341.7654 fax  
 This design and all material appearing hereon constitute the original unpublished work of Omaha Neon Sign Co., Inc. and may not be duplicated, used or disclosed without written consent.

**DRAWING # : 127143**  
**PROJECT ID: 25441**

**SALES PERSON: andye nelson**  
**DRAWN BY: wes stephens**

**DATE: 03.31.21**  
**Revised:**  
**DATE: 04.02.21**

INSPECTED BY:

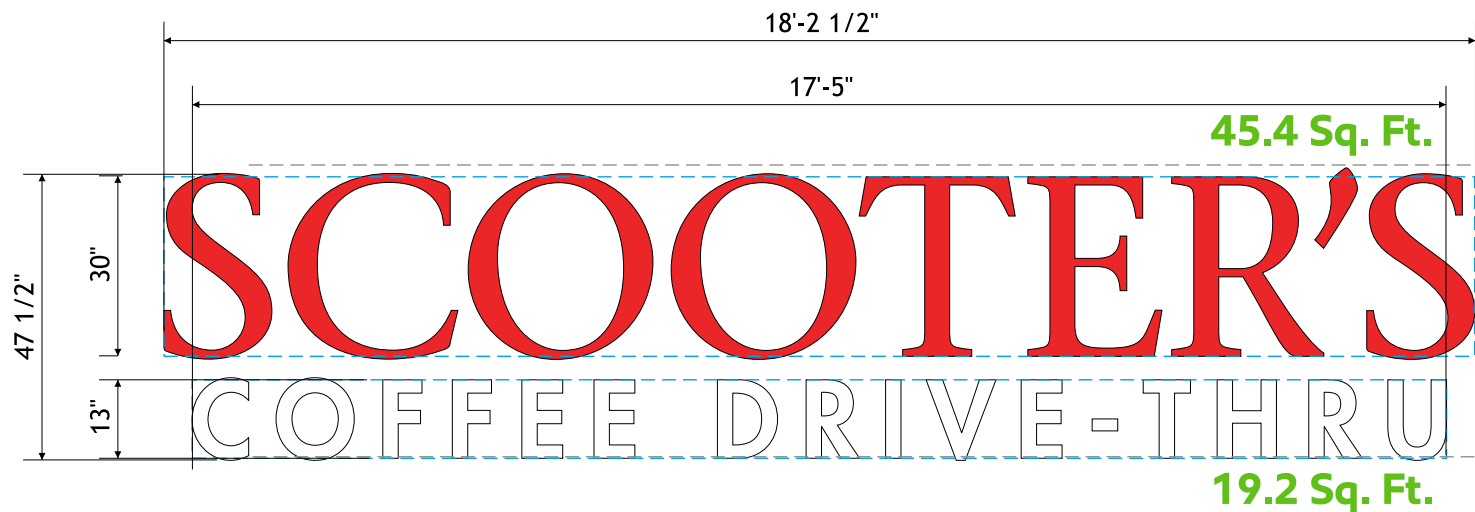
**SCOOTER'S**  
**COFFEE DRIVE-THRU**  
 707 NE Rice Rd  
 LEE's Summit, MO

**NOTICE:**  
 ALL GRAPHIC REPRODUCTIONS ARE SUBJECT TO APPROVAL BY AUTHORIZED CLIENT, AS OF APPROVAL BY THE UNDERSIGNED AND DATED PRIOR TO ANY FABRICATION OF PRODUCT. OMAHA NEON SIGN COMPANY, INC. HOLDS ALL AGREEMENTS FINAL AND TO CLIENT APPROVAL.

Signed \_\_\_\_\_ Date \_\_\_\_\_  
 Sales Rep. \_\_\_\_\_ Date \_\_\_\_\_

This sign is intended to be installed in accordance with the requirements of Article 600 of the National Electric Code and/or other applicable local codes. This includes proper grounding and bonding of the sign.

**UL LISTED**



**NOTE:**  
ALUMINUM REVERSE RACEWAY  
LOCATED ON ROOF BEHIND  
PARAPET WALL.

**NOTE:**  
POWER TO EXIT AT TOP AREA OF  
"SCOOTER'S"

**NOTE:**  
POWER TO EXIT AT LOWEST POINT  
OF "COFFEE DRIVE-THRU"



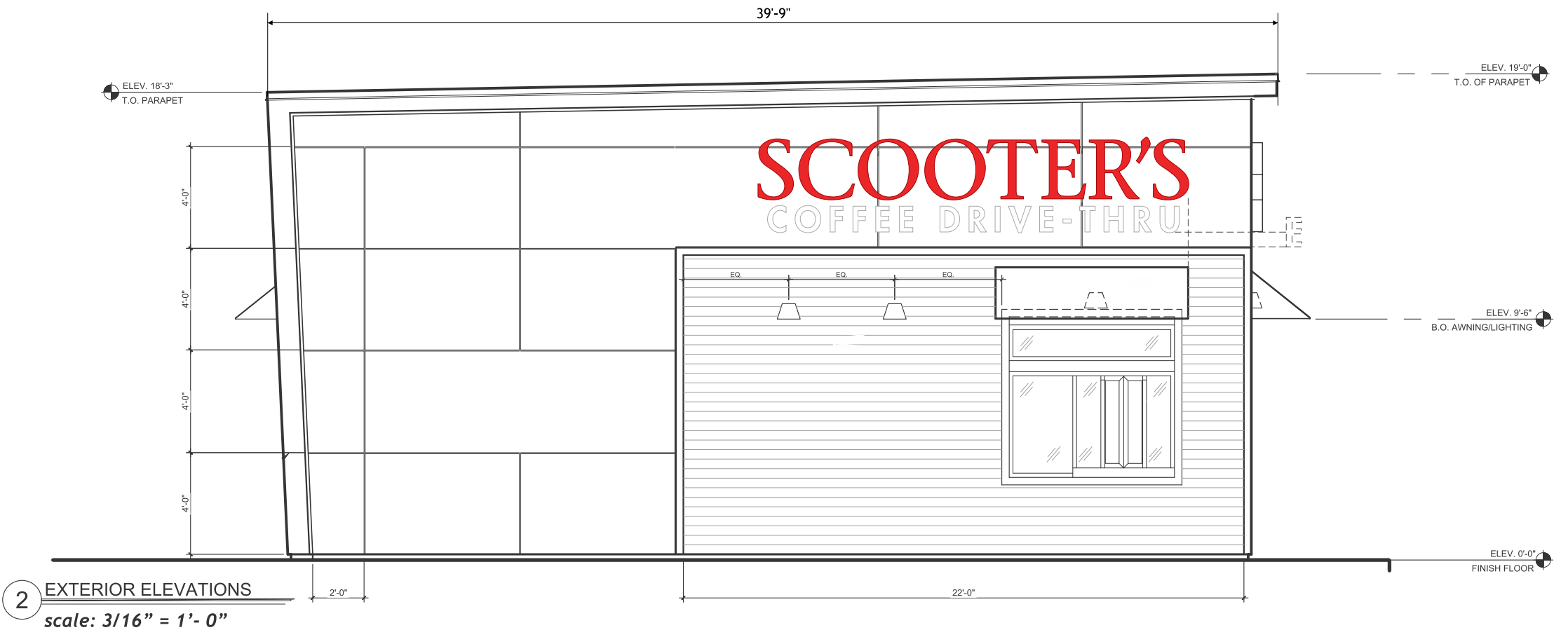
**NOTE:**  
POWER TO EXIT LOWER  
LETTERS AND ENTER STORE.

**FLUSH MOUNTED CHANNEL LETTERS**  
SCALE: 3/8" = 1'-0"

SCOOTER'S	
<b>RETURNS:</b>	3 Inch Deep .040 Blk. Pre-Finished Aluminum
<b>BACKS:</b>	.063 White Pre-Finished Aluminum
<b>FACES:</b>	.1875 White Acrylic
<b>VINYL:</b>	230-43 Tomato Red - Translucent
<b>TRIM-CAP:</b>	1 Inch Black
<b>ILLUMINATION:</b>	Red Hanley LED's
COFFEE DRIVE-THRU	
<b>RETURNS:</b>	3 Inch Deep .040 Blk. Pre-Finished Aluminum
<b>BACKS:</b>	.063 White Pre-Finished Aluminum
<b>FACES:</b>	.1875 White Acrylic
<b>TRIM-CAP:</b>	1 Inch Black
<b>ILLUMINATION:</b>	White Hanley LED's



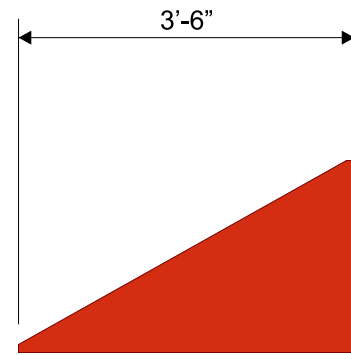
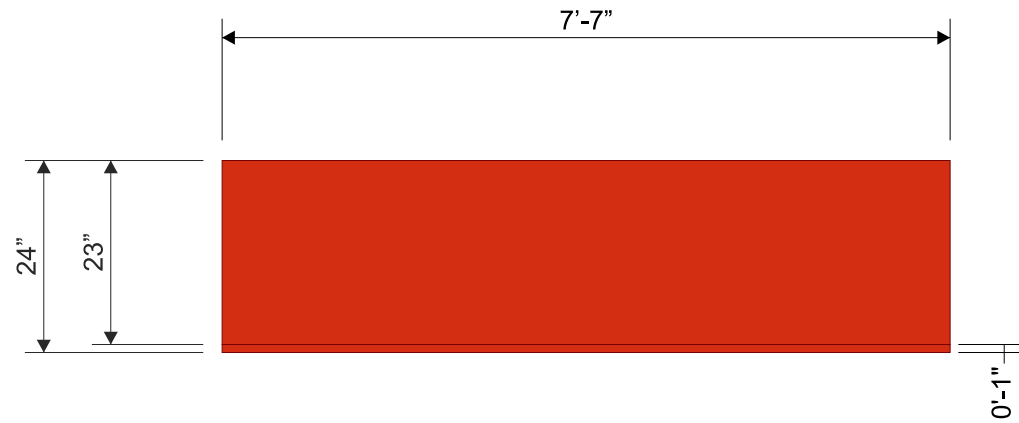
**Total: 64.6 Sq. Ft.**



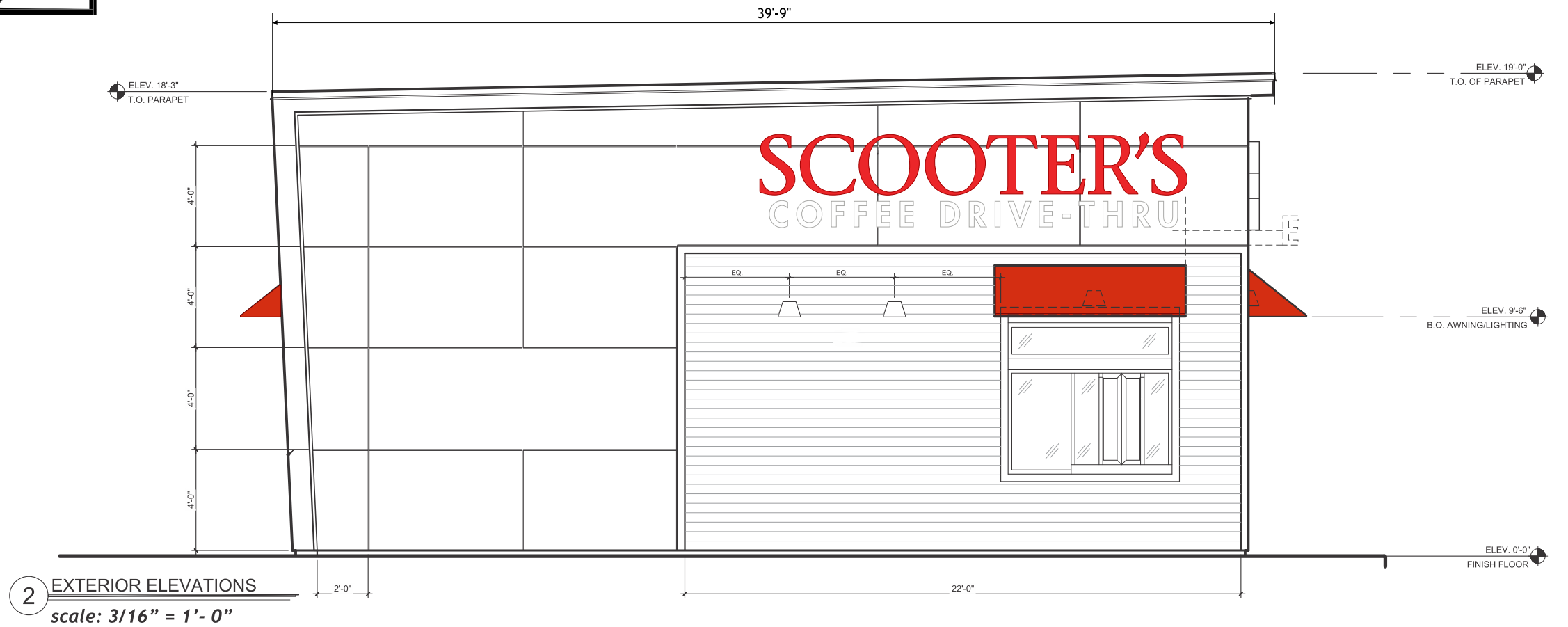
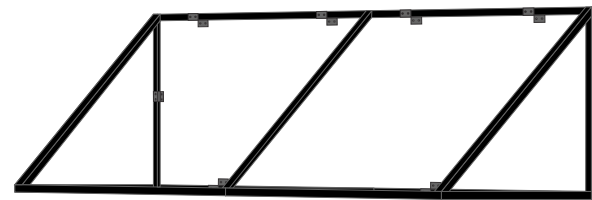
**2 EXTERIOR ELEVATIONS**  
scale: 3/16" = 1' - 0"

<p>1120 N 18th Street • Omaha 68102 402.341.6077 • 402.341.7654 fax This design and all material appearing hereon constitute the original unpublished work of Omaha Neon Sign Co., Inc. and may not be duplicated, used or disclosed without written consent.</p>	<b>DRAWING # : 127144</b> <b>PROJECT ID: 25441</b>	<b>SALES PERSON: andye nelson</b> <b>DRAWN BY: wes stephens</b>	<b>DATE: 03.31.21</b> <b>Revised: 04.02.21</b>	<b>INSPECTED BY:</b> <b>SCOOTER'S COFFEE DRIVE-THRU</b> 707 NE Rice Rd LEE's Summit, MO	<b>NOTICE:</b> ALL GRAPHIC REPRODUCTIONS ARE SUBJECT TO APPROVAL BY THE UNDERSIGNED CLIENT, AS OF APPROVAL BY THE UNDERSIGNED AND DATED PRIOR TO ANY FABRICATION OF PRODUCT. OMAHA NEON SIGN COMPANY, INC. HOLDS ALL AGREEMENTS FINAL AND TO CLIENT APPROVAL.	Signed _____ Date _____ Sales Rep. _____ Date _____	This sign is intended to be installed in accordance with the requirements of Article 600 of the National Electric Code and/or other applicable local codes. This includes proper grounding and bonding of the sign.

**NON-ILLUMINATED AWNING DISPLAY:  
SCALE: 1/2" = 1'-0"**



<b>SCOOTER'S COFFEE DRIVE-THRU</b>	
<b>Awning Display</b>	
<b>FRAME:</b>	1"x 1" ALUM. Sq. TUBE FRAME (Painted Black)
<b>SKIN:</b>	LOGO RED SUNBRELLA MATERIAL #6066-0000
<b>GRAPHICS:</b>	(As Noted)
<b>INSTALLATION:</b>	
PANEL IS TO BE MOUNTED TO FASCIA USING PROPER HARDWARE AND FASTENERS (NON-CORROSIVE). 14GA. Z-CLIPS - #12 SELF TAPPING TEKS - 3/16" 0 x 1 1/2" TAP CONS TO EXISTING FASCIA.	



**2 EXTERIOR ELEVATIONS**  
scale: 3/16" = 1' - 0"

**Omaha Neon Sign Co., Inc.**  
1120 N 18th Street • Omaha 68102  
402.341.6077 • 402.341.7654 fax  
This design and all material appearing hereon constitute the original unpublished work of Omaha Neon Sign Co., Inc. and may not be duplicated, used or disclosed without written consent.

**DRAWING # : 127145**  
**PROJECT ID: 25441**

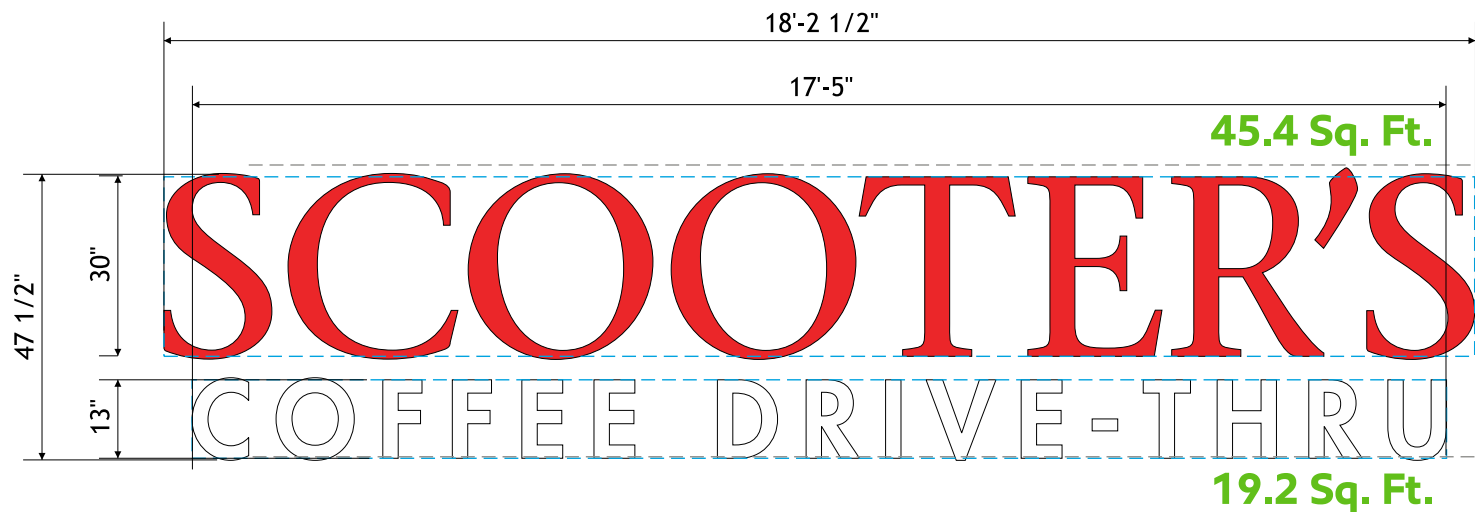
**SALES PERSON: andye nelson**  
**DRAWN BY: wes stephens**

**DATE: 03.31.21**  
**Revised: 04.02.21**

**INSPECTED BY:**  
**SCOOTER'S COFFEE DRIVE-THRU**  
707 NE Rice Rd  
LEE's Summit, MO

**NOTICE:**  
ALL GRAPHIC REPRODUCTIONS ARE SUBJECT TO APPROVAL BY AUTHORIZED CLIENT, AS OF APPROVAL BY THE UNDERSIGNED AND DATED PRIOR TO ANY FABRICATION OF PRODUCT. OMAHA NEON SIGN COMPANY, INC. HOLDS ALL AGREEMENTS FINAL AND TO CLIENT APPROVAL.  
Signed \_\_\_\_\_ Date \_\_\_\_\_  
Sales Rep. \_\_\_\_\_ Date \_\_\_\_\_

This sign is intended to be installed in accordance with the requirements of Article 600 of the National Electric Code and/or other applicable local codes. This includes proper grounding and bonding of the sign.  
**UL LISTED**



**NOTE:**  
ALUMINUM REVERSE RACEWAY  
LOCATED ON ROOF BEHIND  
PARAPET WALL.

**NOTE:**  
POWER TO EXIT AT TOP AREA OF  
"SCOOTER'S"

**NOTE:**  
POWER TO EXIT AT LOWEST POINT  
OF "COFFEE DRIVE-THRU"



**NOTE:**  
POWER TO EXIT LOWER  
LETTERS AND ENTER STORE.

**FLUSH MOUNTED CHANNEL LETTERS**  
SCALE: 3/8" = 1'-0"

SCOOTER'S	
<b>RETURNS:</b>	3 Inch Deep .040 Blk. Pre-Finished Aluminum
<b>BACKS:</b>	.063 White Pre-Finished Aluminum
<b>FACES:</b>	.1875 White Acrylic
<b>VINYL:</b>	230-43 Tomato Red - Translucent
<b>TRIM-CAP:</b>	1 Inch Black
<b>ILLUMINATION:</b>	Red Hanley LED's
COFFEE DRIVE-THRU	
<b>RETURNS:</b>	3 Inch Deep .040 Blk. Pre-Finished Aluminum
<b>BACKS:</b>	.063 White Pre-Finished Aluminum
<b>FACES:</b>	.1875 White Acrylic
<b>TRIM-CAP:</b>	1 Inch Black
<b>ILLUMINATION:</b>	White Hanley LED's

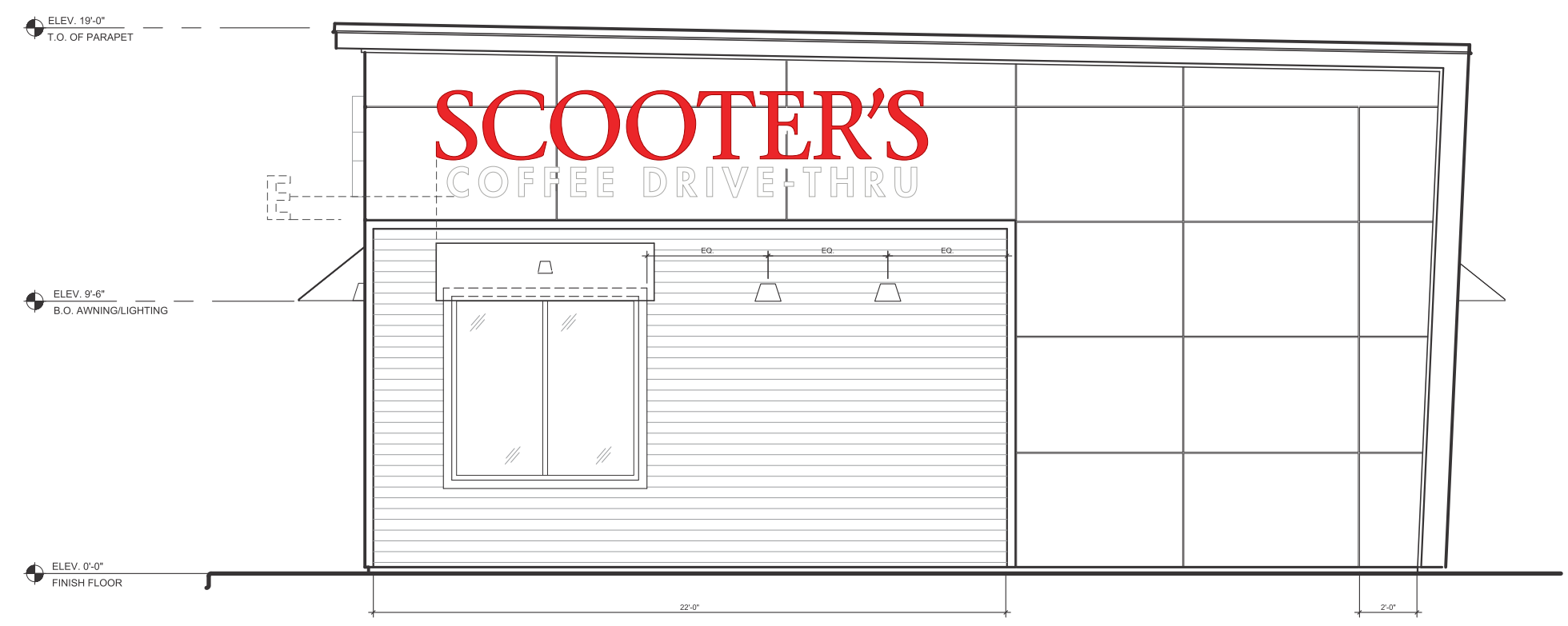


**NOTE:**  
LED MODULES ARE RIVETED TO  
ALUMINUM BACK AND SEALED WITH  
SILICONE. NUMBER OF LED MODULES  
WILL VARY DEPENDING ON LOGO SIZE.

**NOTE:**  
POWER TO EXIT REAR  
OF CHANNEL LETTERS.

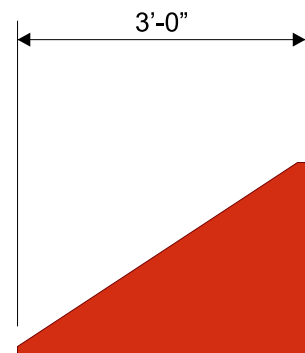
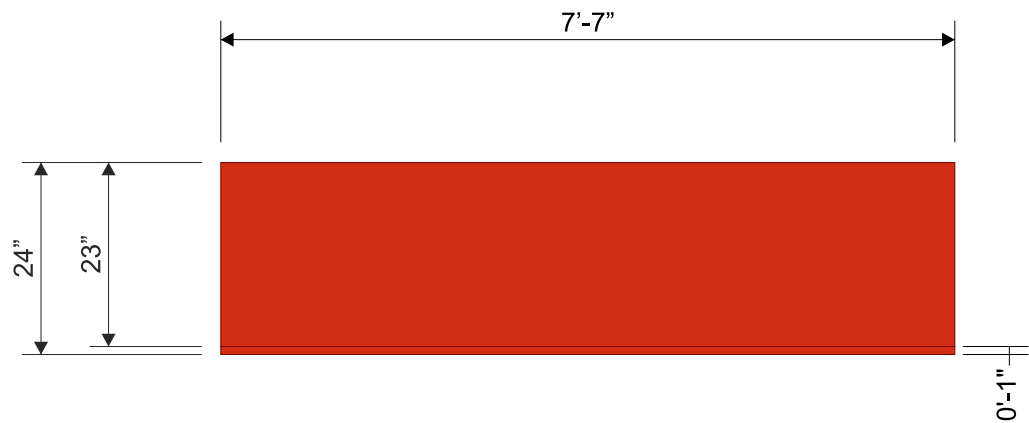
**NOTE:**  
TRANSFORMER CONTAINED  
WITHIN INVERTED WIREWAY.

**Total: 64.6 Sq. Ft.**



**1 EXTERIOR ELEVATIONS**  
scale: 3/16" = 1'-0"

<p>Omaha Neon Sign Co., Inc. 1120 N 18th Street • Omaha 68102 402.341.6077 • 402.341.7654 fax This design and all material appearing hereon constitute the original unpublished work of Omaha Neon Sign Co., Inc. and may not be duplicated, used or disclosed without written consent.</p>	<p><b>DRAWING # : 127146</b></p> <p><b>PROJECT ID: 25441</b></p>	<p><b>SALES PERSON: andye nelson</b></p> <p><b>DRAWN BY: wes stephens</b></p>	<p><b>DATE: 03.31.21</b></p> <p><b>Revised: 04.02.21</b></p>	<p><b>INSPECTED BY:</b></p> <p><b>SCOOTER'S COFFEE DRIVE-THRU</b> 707 NE Rice Rd LEE's Summit, MO</p>	<p><b>NOTICE:</b> ALL GRAPHIC REPRODUCTIONS ARE SUBJECT TO APPROVAL BY THE AUTHORIZED CLIENT, AS OF APPROVAL BY THE UNDERSIGNED AND DATED PRIOR TO ANY FABRICATION OF PRODUCT. OMAHA NEON SIGN COMPANY, INC. HOLDS ALL AGREEMENTS FINAL AND TO CLIENT APPROVAL.</p> <p>Signed _____ Date _____ Sales Rep. _____ Date _____</p>	<p>This sign is intended to be installed in accordance with the requirements of Article 600 of the National Electric Code and/or other applicable local codes. This includes proper grounding and bonding of the sign.</p> <p></p>
---	--	---	--	---	--	--

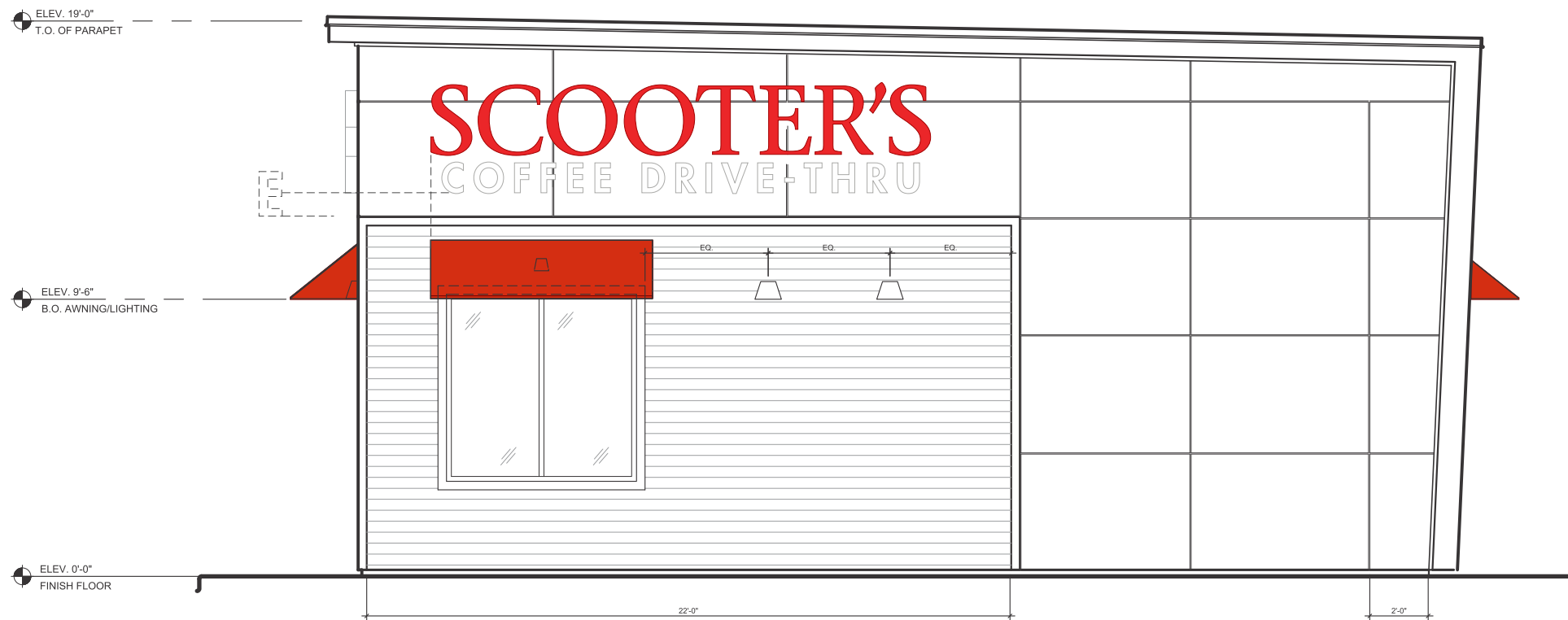


**SCOOTER'S**  
COFFEE DRIVE-THRU

**Awning Display**

<b>FRAME:</b>	1"x 1" ALUM. Sq. TUBE FRAME (Painted Black)
<b>SKIN:</b>	LOGO RED SUNBRELLA MATERIAL #6066-0000
<b>GRAPHICS:</b>	(As Noted)

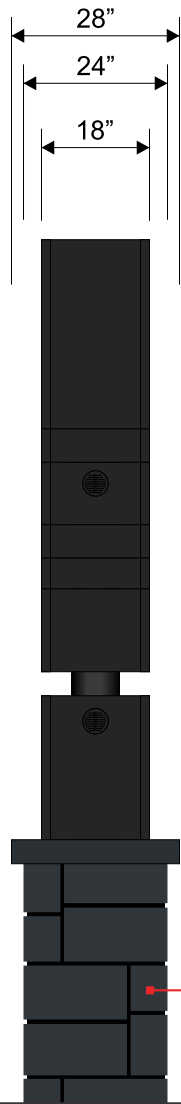
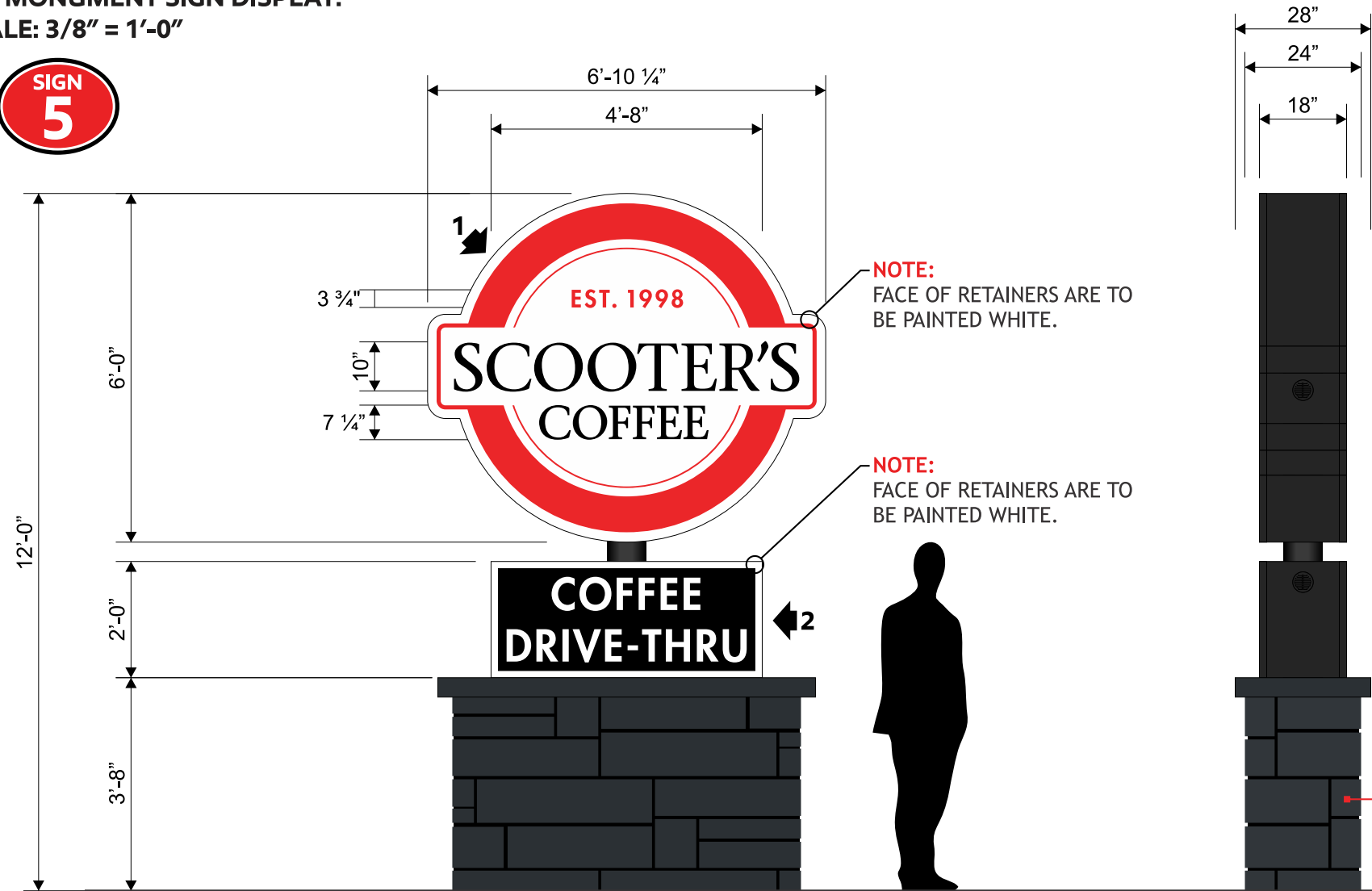
**INSTALLATION:**  
 PANEL IS TO BE MOUNTED TO FASCIA USING PROPER HARDWARE AND FASTENERS (NON-CORROSIVE).  
 14GA. Z-CLIPS - #12 SELF TAPPING TEKS - 3/16" 0 x 1 1/2"  
 TAP CONS TO EXISTING FASCIA.



**1 EXTERIOR ELEVATIONS**  
 scale: 3/16" = 1'- 0"

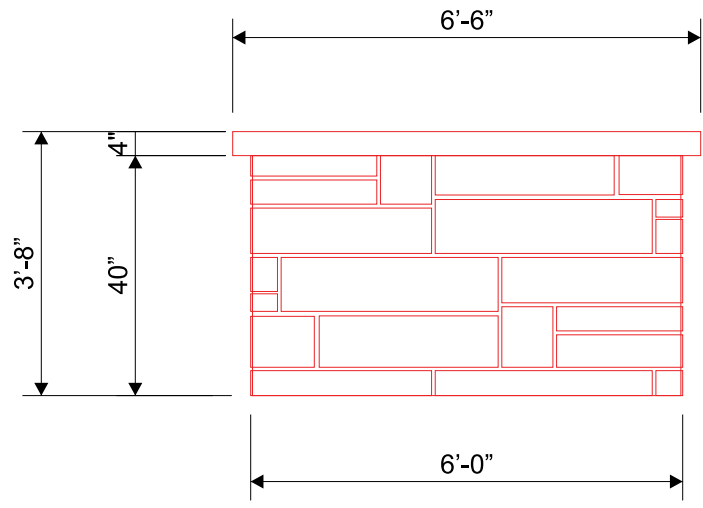
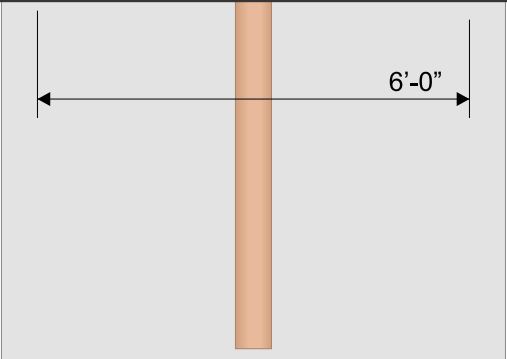
**D/F MONUMENT SIGN DISPLAY:**  
**SCALE: 3/8" = 1'-0"**

**SIGN 5**

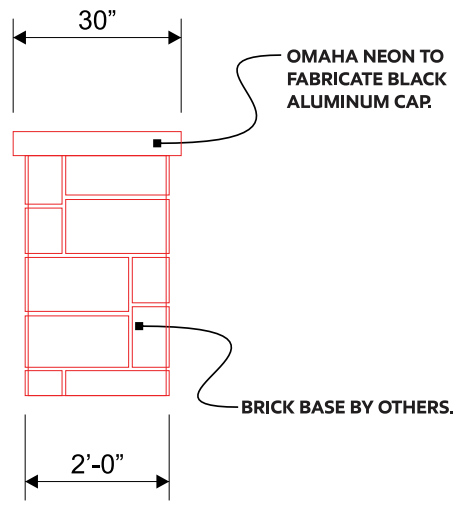


**Stone Color:**  
**Sherwin Williams**  
**Inkwell 6992**

**SPREAD FOOTING DETAIL**  
 DEPTH: 5'-0"  
 FACE WIDTH: 7'-0"  
 END WIDTH: 3'-0"  
 TYPE: SPREAD  
 STEEL SIZE: 6 INCH STD.  
**TO BE VERIFIED**



**BASE DETAIL: FACE**



**BASE DETAIL: END**

**1 SCOOTER'S COFFEE DRIVE-THRU**  
**Monument Sign Display (Primary)**

FABRICATED FROM .050 ALUMINUM PAINTED WHITE OVER AN INTERNAL ANGLE FRAME WITH WHITE PRE-FINISHED ALUMINUM SKIN. RETAINERS ARE TO BE ALUMINUM PAINTED WHITE. FACES ARE TO BE WHITE LEXAN WITH 3M VINYL GRAPHICS APPLIED TO THE FIRST SURFACE (AS NOTED). INTERNAL ILLUMINATION WITH ONE (1) ROW OF WT HANLEY PHEONIX LED LIGHTING. CABINET IS TO BE MOUNTED TO SINGLE POLE STRUCTURE (AS NOTED).

**2 SCOOTER'S COFFEE DRIVE-THRU**  
**Monument Sign Display (Secondary)**

FABRICATED FROM EC-FRAME (EXTRUDED ALUMINUM AND WILL HAVE ALUMINUM SKIN PAINTED. CABINET AND RETAINERS ARE TO BE PAINTED WHITE. FACE(S) IS TO BE 3/16" WHITE PLEXIGLAS #2793 WITH 3M VINYL GRAPHICS APPLIED TO THE FIRST SURFACE. INTERNAL ILLUMINATION WITH WHITE HANLEY PHOENIX S/S LED'S. CABINET IS TO BE MOUNTED TO POLE STRUCTURE USING PROPER HARDWARE AND FASTENERS (NON-CORROSIVE).

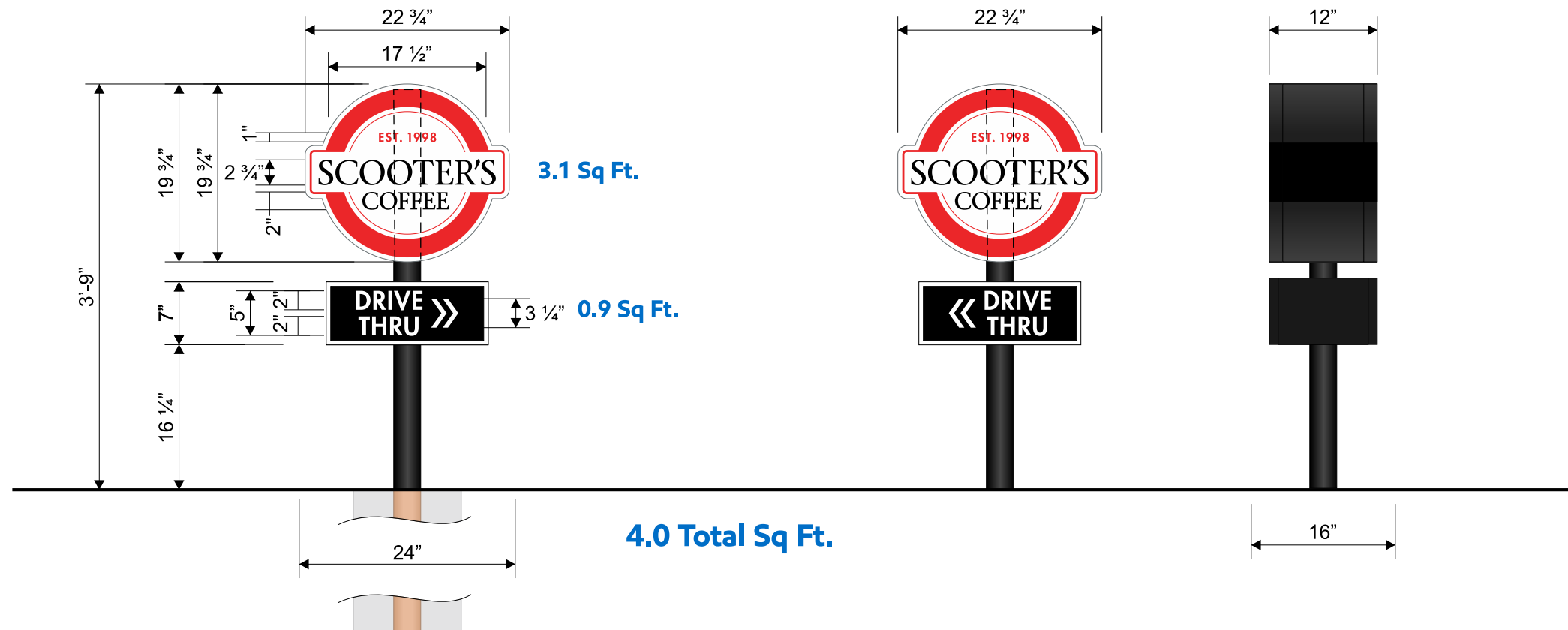
**3M Series 230**  
**TRANSLUCENT FILM**

**LT. TOMATO RED**  
 230-43

**BLACK**  
 230-22

OMAHA NEON TO FABRICATE BLACK ALUMINUM CAP.

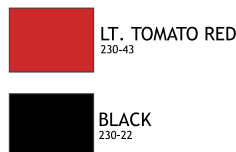
BRICK BASE BY OTHERS.



FOOTING DETAIL	
DEPTH:	42 Inches
WIDTH:	12 Inches
TYPE:	AUGURED.
STEEL SIZE:	3 Inch Std.

**NOTE:** TO BE VERIFIED.

3M Series 230  
TRANSLUCENT FILM



SCOOTER'S COFFEE DRIVE-THRU Directional Sign Display	
INTERIOR FRAME:	1 Inch Angle Iron
CABINET COLOR:	.063 Aluminum Painted Black.
TRIM-CAP:	1 Inch Black.
FACE MATERIAL:	3/16" White Plexiglas
GRAPHICS:	Applied Vinyl Graphics (as noted).
ILLUMINATION:	White Hanley LED's

CABINET IS TO BE MOUNTED IN CUSTOMER SPECIFIED LOCATION USING PROPER HARDWARE AND FASTENERS (NON-CORROSIVE).



1120 N 18th Street • Omaha 68102  
402.341.6077 • 402.341.7654 fax  
This design and all material appearing hereon constitute the original unpublished work of Omaha Neon Sign Co., Inc. and may not be duplicated, used or disclosed without written consent.

DRAWING # : 127149  
PROJECT ID: 25441

SALES PERSON: andye nelson  
DRAWN BY: wes stephens

DATE: 03.31.21  
Revised:  
DATE: 000000

INSPECTED BY:

SCOOTER'S  
COFFEE DRIVE-THRU  
707 NE Rice Rd  
LEE's Summit, MO

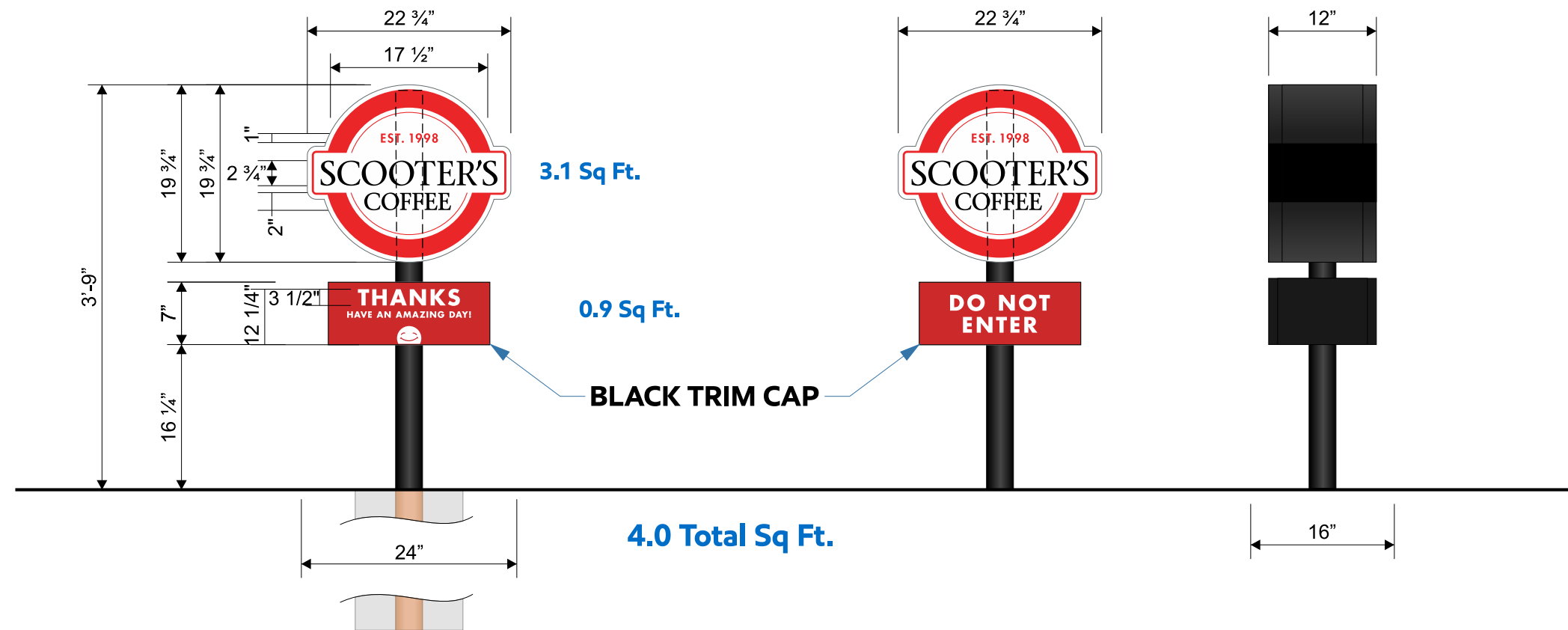
**NOTICE:**

ALL GRAPHIC REPRODUCTIONS ARE SUBJECTED BY APPROVAL OF AUTHORIZED CLIENT, AS OF APPROVAL BY THE UNDERSIGNED AND DATED PRIOR TO ANY FABRICATION OF PRODUCT. OMAHA NEON SIGN COMPANY, INC. HOLDS ALL AGREEMENTS FINAL AND TO CLIENT APPROVAL.

Signed \_\_\_\_\_ Date \_\_\_\_\_  
Sales Rep. \_\_\_\_\_ Date \_\_\_\_\_

This sign is intended to be installed in accordance with the requirements of Article 600 of the National Electric Code and/or other applicable local codes. This includes proper grounding and bonding of the sign.





FOOTING DETAIL	
DEPTH:	42 Inches
WIDTH:	12 Inches
TYPE:	AUGURED.
STEEL SIZE:	3 Inch Std.

NOTE: TO BE VERIFIED.

SCOOTER'S COFFEE DRIVE-THRU	
Directional Sign Display	
INTERIOR FRAME:	1 Inch Angle Iron
CABINET COLOR:	.063 Aluminum Painted Black.
TRIM-CAP:	1 Inch Black.
FACE MATERIAL:	3/16" White Plexiglas
GRAPHICS:	Applied Vinyl Graphics (as noted).
ILLUMINATION:	White Hanley LED's
CABINET IS TO BE MOUNTED IN CUSTOMER SPECIFIED LOCATION USING PROPER HARDWARE AND FASTENERS (NON-CORROSIVE).	

3M Series 230  
TRANSLUCENT FILM



1120 N 18th Street • Omaha 68102  
402.341.6077 • 402.341.7654 fax  
This design and all material appearing hereon constitute the original unpublished work of Omaha Neon Sign Co., Inc. and may not be duplicated, used or disclosed without written consent.

DRAWING #: 127150  
PROJECT ID: 25441

SALES PERSON: andye nelson  
DRAWN BY: wes stephens

DATE: 03.31.21  
Revised:  
DATE: 000000

INSPECTED BY:

SCOOTER'S COFFEE DRIVE-THRU  
707 NE Rice Rd  
LEE's Summit, MO

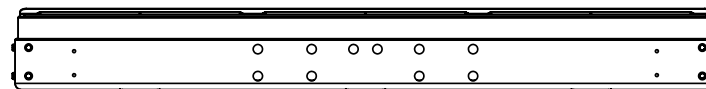
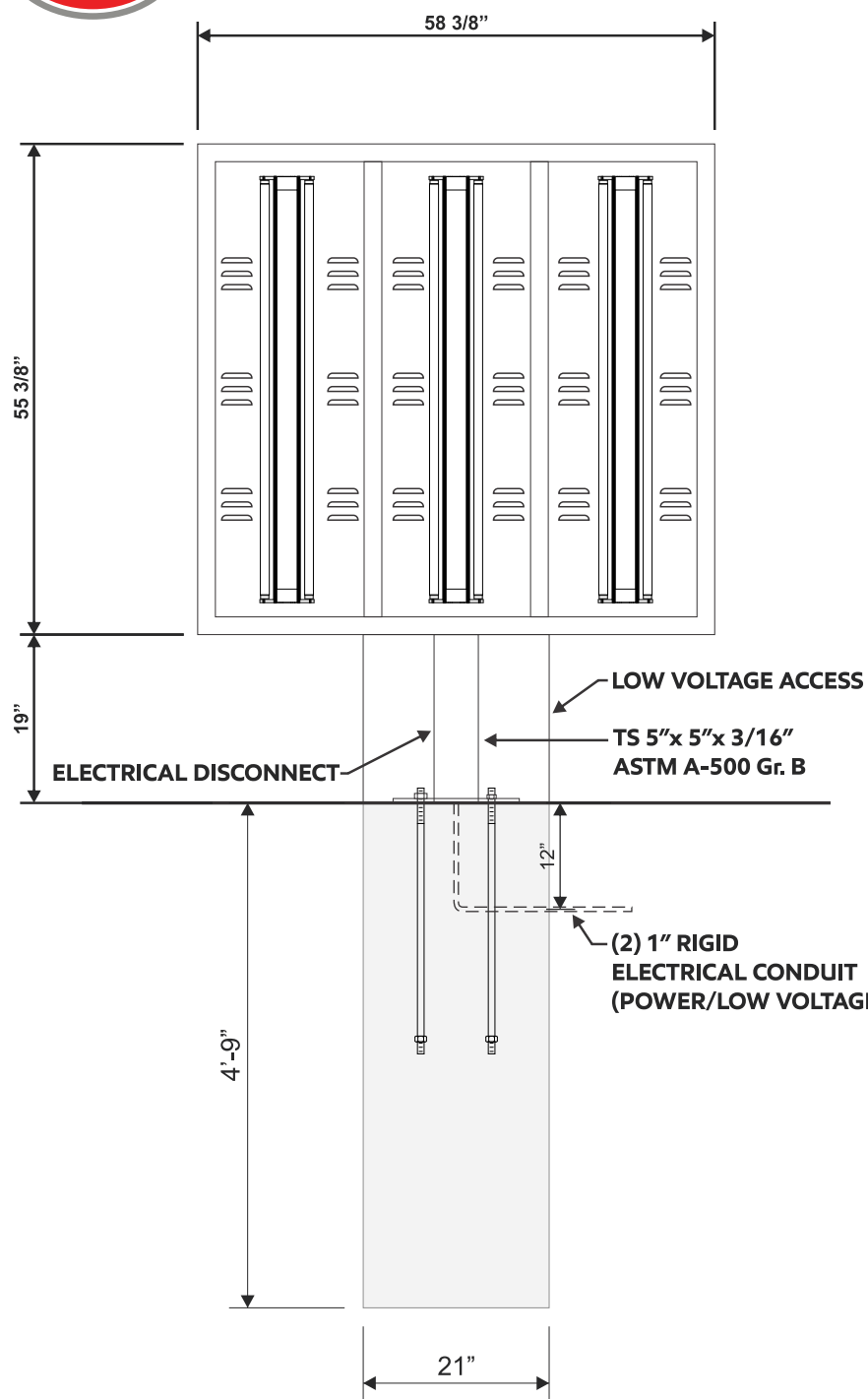
NOTICE:

ALL GRAPHIC REPRODUCTIONS ARE SUBJECT TO APPROVAL BY AUTHORIZED CLIENT, AS OF APPROVAL BY THE UNDERSIGNED AND DATED PRIOR TO ANY FABRICATION OF PRODUCT. OMAHA NEON SIGN COMPANY, INC. HOLDS ALL AGREEMENTS FINAL AND TO CLIENT APPROVAL.

Signed \_\_\_\_\_ Date \_\_\_\_\_  
Sales Rep. \_\_\_\_\_ Date \_\_\_\_\_

This sign is intended to be installed in accordance with the requirements of Article 600 of the National Electric Code and/or other applicable local codes. This includes proper grounding and bonding of the sign.





MENU BOARD DISPLAY

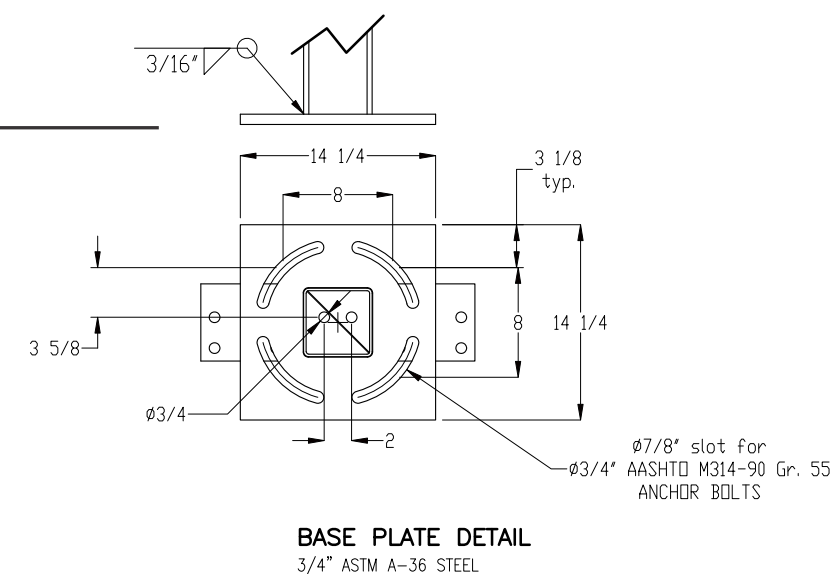
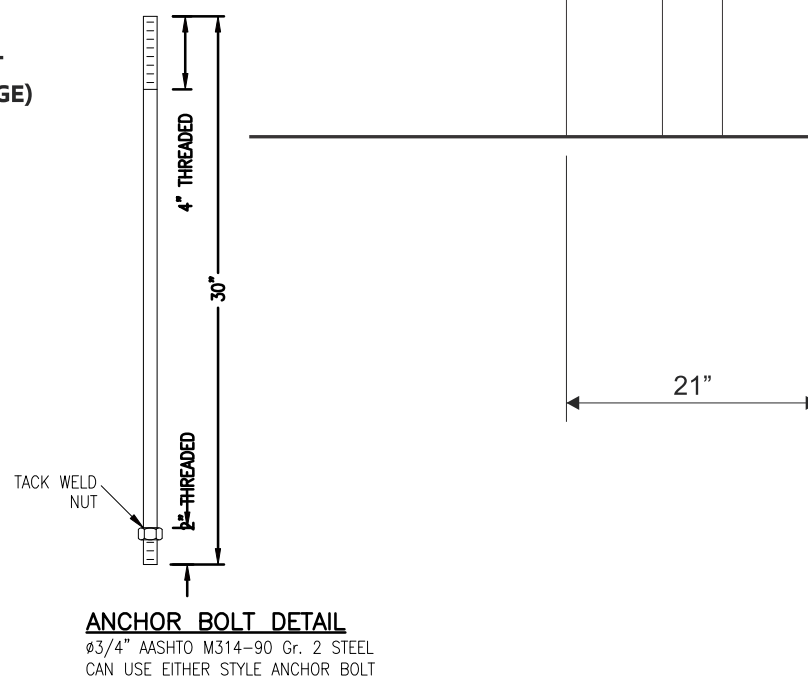
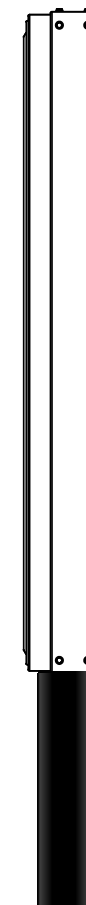


Scooter's Coffee  
Project U19

Ref#GK-18-536r3 • Aug. 21, 2018

ILLUMINATED DRIVE-THRU SYSTEM:

- ☐ LED LIGHTING
- ☐ MOUNTED TO EXISTING PIPE AND FOOTING AS SHOWN
- ☐ GRAPHICS ARE CHANGEABLE



**NOTICE:**

ALL GRAPHIC REPRODUCTIONS ARE SUBJECT TO APPROVAL OF AUTHORIZED CLIENT, AS OF APPROVAL BY THE UNDERSIGNED AND DATED PRIOR TO ANY FABRICATION OF PRODUCT. OMAHA NEON SIGN COMPANY, INC. HOLDS ALL AGREEMENTS FINAL AND TO CLIENT APPROVAL.

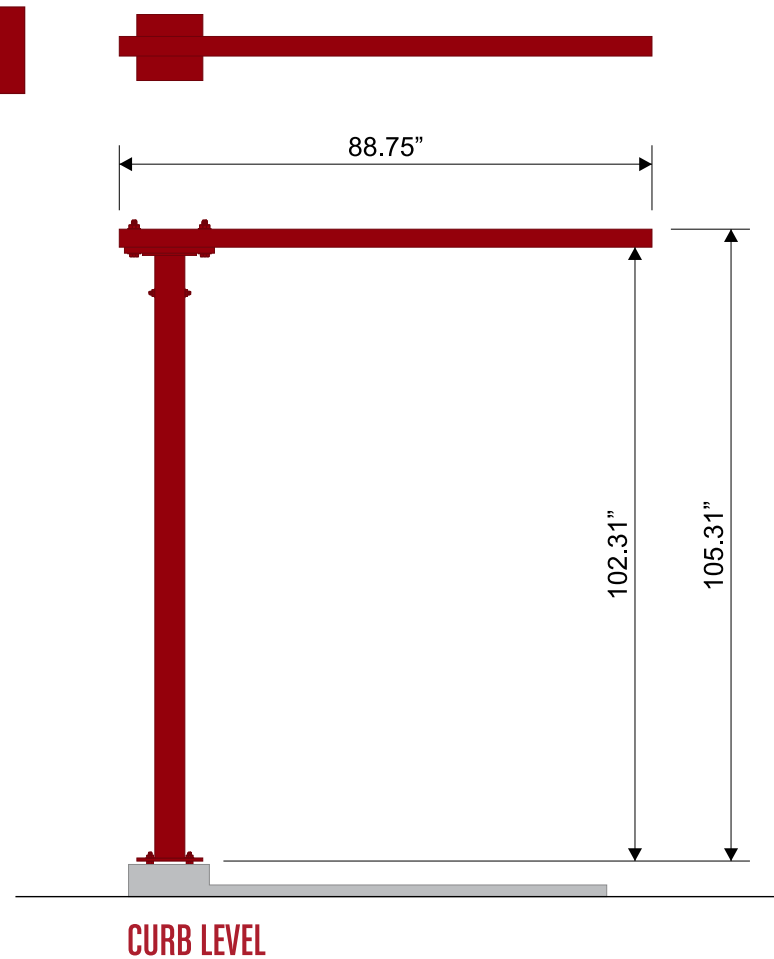
Signed \_\_\_\_\_ Date \_\_\_\_\_  
 Sales Rep. \_\_\_\_\_ Date \_\_\_\_\_

This sign is intended to be installed in accordance with the requirements of Article 600 of the National Electric Code and/or other applicable local codes. This includes proper grounding and bonding of the sign.

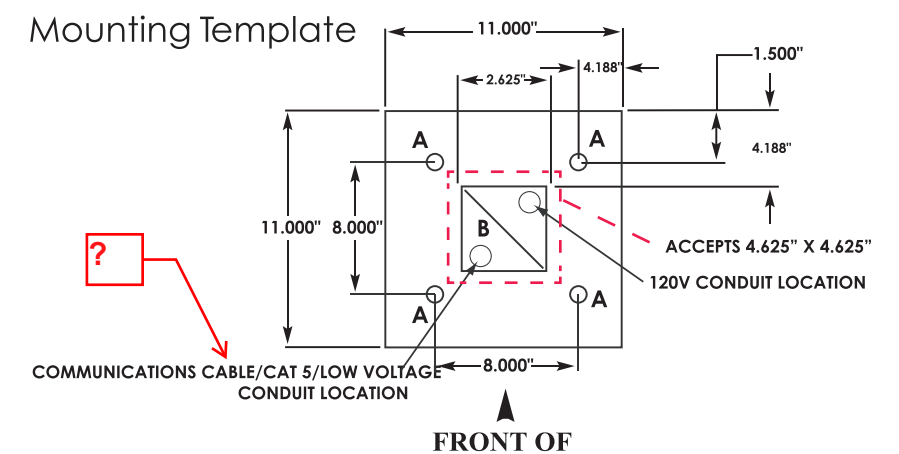
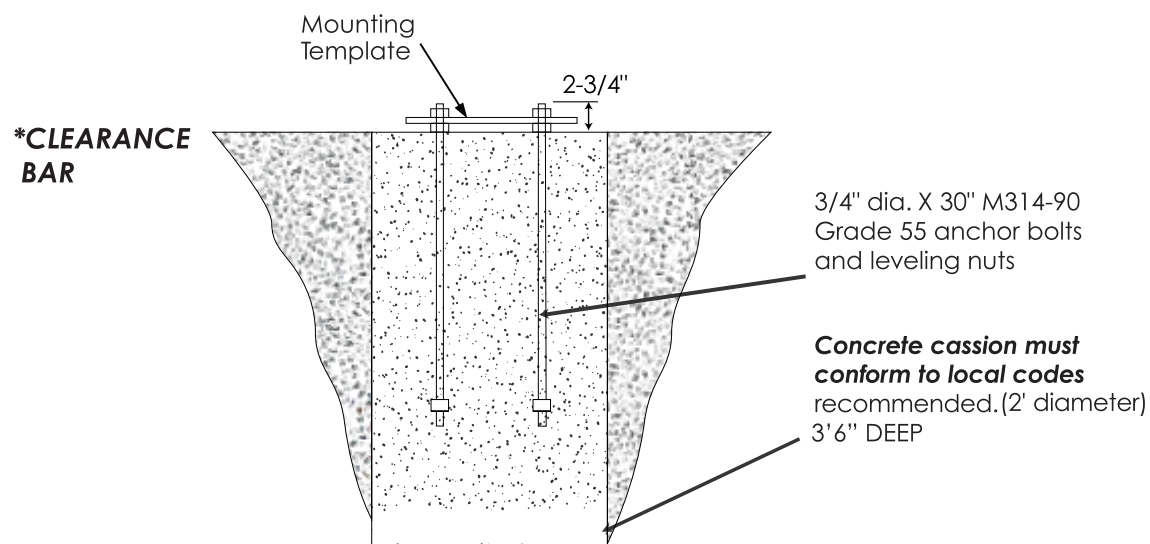


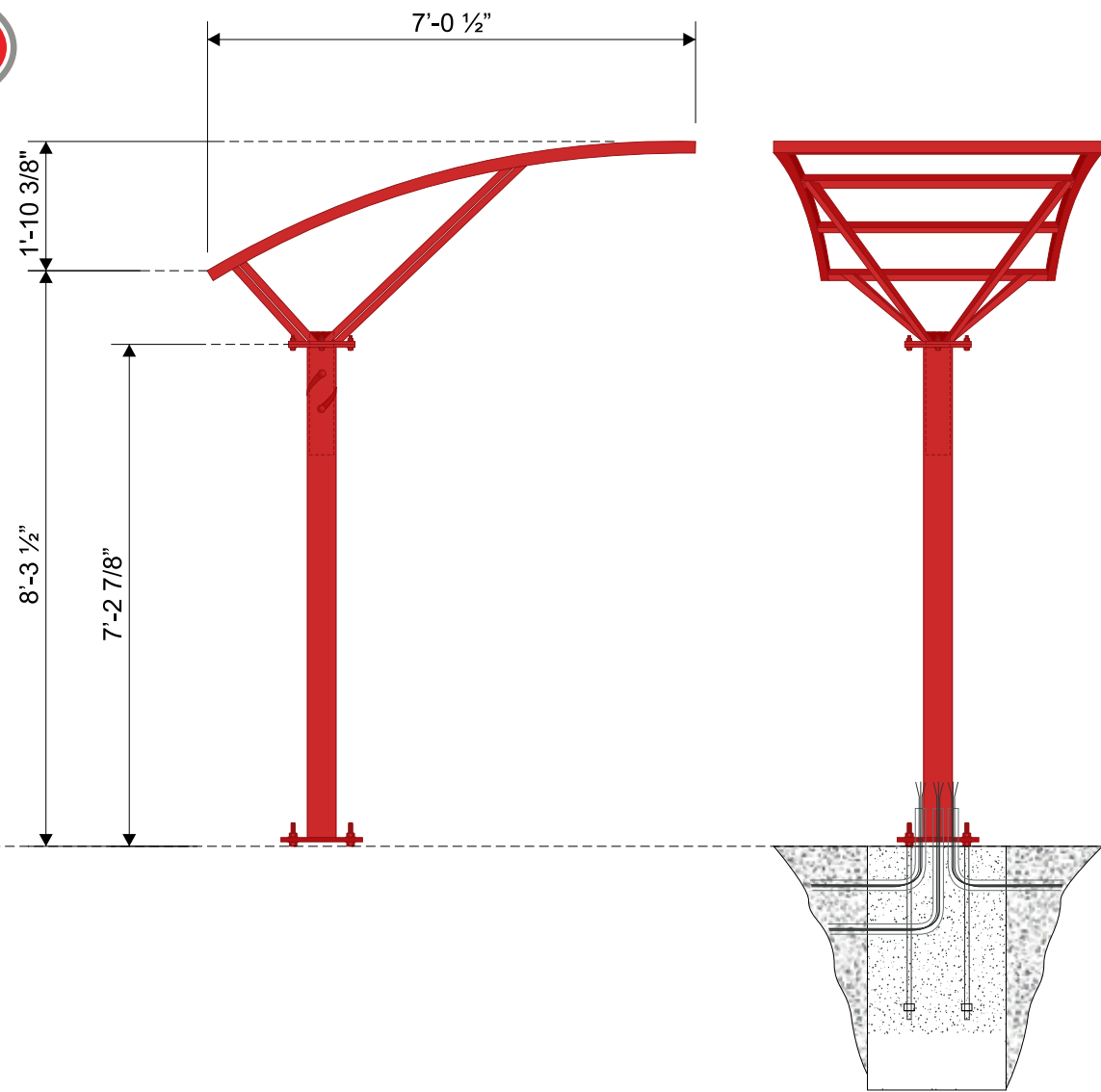


**RED**



**DRIVE-THRU CLEARANCE BAR**  
SCALE: 3/8" = 1'-0"





### Mounting to Foundation

After the concrete has set, remove template and discard. **NOTE: Do not discard the four (4) or, (8) nuts that were just removed.**

The pedestal base plate is now ready to be mounted. Remove any concrete residue from the threads of the anchor bolts. Thread one (1) nut onto each bolt until it stops; then put a flat washer over each bolt. Feed the 120VAC power lines and ground lead into the inside back hole of the bottom of the pedestal base (see **Diagram G, H and J**). Set pedestal base onto anchor bolts place a flat and lock washer over each bolt, and thread on nut. The top surface of the pedestal base should be rough leveled at this time. Adjust the upper and lower hex nuts until the pedestal base is level and tighten. **NOTE: Final leveling can be done after the product is in place (if required).** Use the same procedure as above.

Locate the power leads. These will be hanging from the opening in the bottom of the menu board.

The product is factory wired and needs only to be energized on the job site. This should be done by a qualified electrician only. No disassembly is required.

Connect unit power leads and grounding conductor (green lead) to the power source. Power source must be 120VAC, 60 Hz. Energize the circuit to check the operation. Connect the speaker/microphone (if provided) to the internal communication system

**\*WARNING: DO NOT CONNECT THE SPEAKER/MIC/DATA/CAT 5/LOOP WIRE TO 120VAC (POWER SOURCE).\***

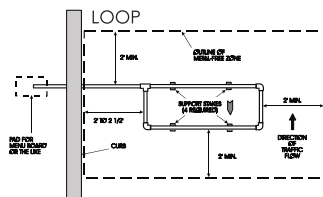
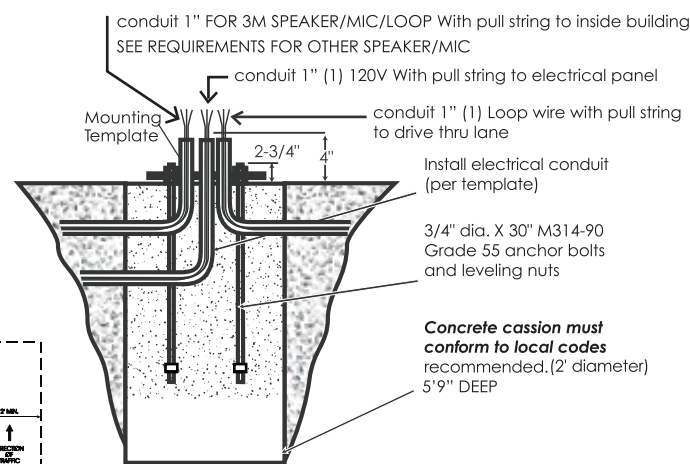
**AMPS REQUIRED 120V**

CURVED TOP CANOPY LED LIGHTING - .2amps  
FLAT TOP CANOPY LED LIGHTING - .3amps



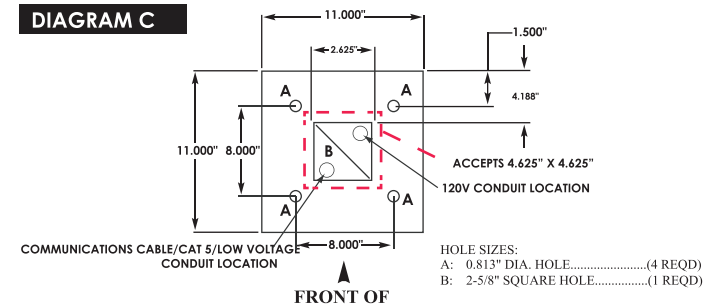
### DIAGRAM J

**\*CANOPY WITH SPEAKER/MIC AND LIGHTING (LOOP REQUIRED)**



### Mounting Template

#### DIAGRAM C

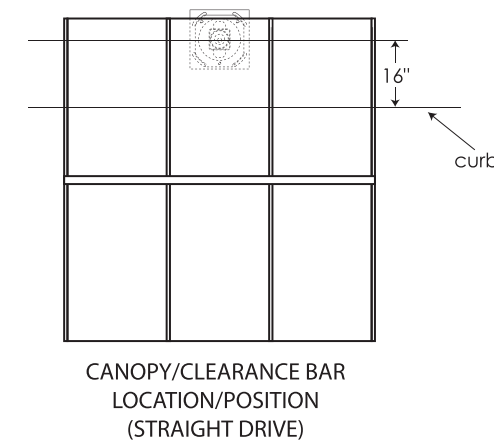


### Foundation

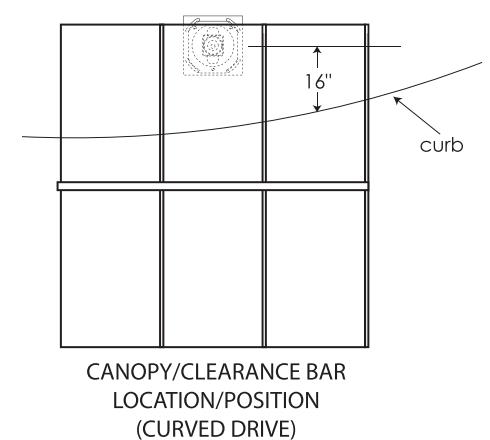
The high voltage conduit must be installed in place by a qualified contractor. It runs from the power source to the menu board location. A conduit stub should protrude 4" above the concrete slab (see **Diagram I, J, K and L**). Use the template supplied for the correct relation between the mounting bolts and the conduit location. Power and ground leads should be pulled through the conduit approximately 12" beyond the conduit stub, and be accessible at the time of final wiring. **Note: The 120VAC power lines run up the inside back of the pedestal base (see Diagram C, Mounting Template)**

### ② Foundation Placement

#### DIAGRAM G



#### DIAGRAM H



**Omaha Neon Sign Co., Inc.**  
1120 N 18th Street • Omaha 68102  
402.341.8077 • 402.341.7654 fax  
This design and all material appearing hereon constitute the original unpublished work of Omaha Neon Sign Co., Inc. and may not be duplicated, used or disclosed without written consent.

**DRAWING # : 127153**  
**PROJECT ID: 25441**

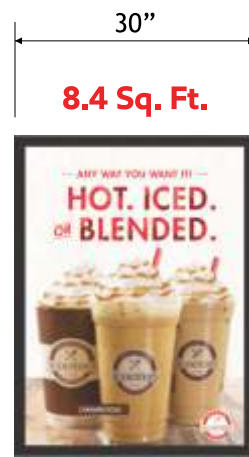
**SALES PERSON: andye nelson**  
**DRAWN BY: wes stephens**

**DATE: 04.01.21**  
**Revised: DATE: 000000**

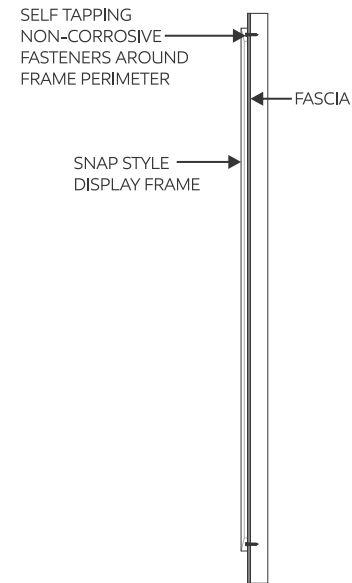
**INSPECTED BY:**  
**SCOOTER'S COFFEE DRIVE-THRU**  
707 NE Rice Rd  
LEE's Summit, MO

**NOTICE:**  
ALL GRAPHIC REPRODUCTIONS ARE SUBJECT TO APPROVAL BY THE AUTHORIZED CLIENT, AS OF APPROVAL BY THE UNDERSIGNED AND DATED PRIOR TO ANY FABRICATION OF PRODUCT. OMAHA NEON SIGN COMPANY, INC. HOLDS ALL AGREEMENTS FINAL AND TO CLIENT APPROVAL.  
Signed \_\_\_\_\_ Date \_\_\_\_\_  
Sales Rep. \_\_\_\_\_ Date \_\_\_\_\_

This sign is intended to be installed in accordance with the requirements of Article 600 of the National Electric Code and/or other applicable local codes. This includes proper grounding and bonding of the sign.  
**UL LISTED**



**25.2 Total Sq. Ft.**



**INSTALL CUSTOMER PROVIDED SIGN PANELS**  
SCALE: 1/2" = 1'-0"

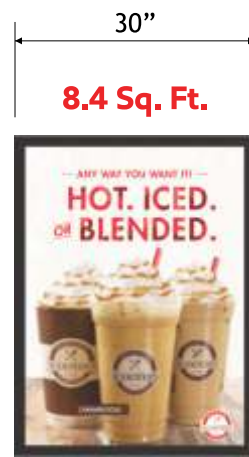
## SCOOTER'S COFFEE DRIVE-THRU

### Snap Frame Panels

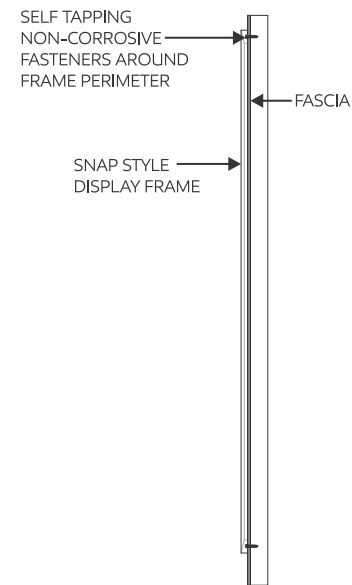
**SCOPE OF WORK:**  
INSTALL CUSTOMER PROVIDED SIGN PANELS. PANELS ARE TO BE MOUNTED TO FASCIA IN CUSTOMER SPECIFIED LOCATION USING PROPER HARDWARE AND FASTENERS (NON-CORROSIVE).

**NOTE: SNAP FRAMES ARE TO BE INSTALLED BY ON SITE G.C.**





**25.2 Total Sq. Ft.**



**INSTALL CUSTOMER PROVIDED SIGN PANELS**  
SCALE: 1/2" = 1'-0"

**SCOOTER'S**

**COFFEE DRIVE-THRU**

**Snap Frame Panels**

**SCOPE OF WORK:**  
INSTALL CUSTOMER PROVIDED SIGN PANELS. PANELS ARE TO BE MOUNTED TO FASCIA IN CUSTOMER SPECIFIED LOCATION USING PROPER HARDWARE AND FASTENERS (NON-CORROSIVE).

**NOTE: SNAP FRAMES ARE TO BE INSTALLED BY ON SITE G.C.**



**1 EXTERIOR ELEVATIONS**  
scale: 3/16" = 1'-0"