

MAIN FLOOR PLAN
NORTH SCALE 3/16"=1'-0"

RELEASE FOR CONSTRUCTION
SHAW HOFSTRA + ASSOCIATES
LEE'S SUMMIT, MISSOURI
5/5/21

Signature Builders
BUILDERS
KC, LLC

Signature Builders KC, LLC
2751 NE Douglas St. - Suite R
Lee's Summit, Missouri 64064
Phone: (816) 215-0891
Website:
www.sb-kc.net

New Airplane Hangar
at Lees Summit Airport
2751 NE DOUGLAS ST., UNIT V
LEES SUMMIT, MO 64064

SH

ASSOCIATES

SHAW HOFSTRA + ASSOCIATES
1800 CENTRAL STREET, SUITE 203
KANSAS CITY, MISSOURI 64108
P: 816.421.0505
ARCHITECTURAL CORPORATION
Certificate of Authority No. 00111130
This document, and all plans, specifications and other information contained therein, are the exclusive property of SHAW HOFSTRA + ASSOCIATES. These documents are delivered and accepted by you in trust and on the expressed condition that neither these documents or the information contained therein will be copied, reproduced, or delivered to others, except copies stamped "CONFIDENTIAL". NOT FOR CONSTRUCTION. PROPERTY OF SHAW HOFSTRA + ASSOCIATES. No reproducible copies shall be distributed without the express written consent of SHAW HOFSTRA + ASSOCIATES. The design represented by these documents and plans is the exclusive property, design, and concepts of SHAW HOFSTRA + ASSOCIATES and may not be used or copied without the express written consent of SHAW HOFSTRA + ASSOCIATES.

SHAW HOFSTRA + ASSOCIATES
© 2020

CAD Corporation Documents
Voice / Text: 913.638.3241
hofs@sb-kc.com
Residential AutoCAD Drafting
and Design Services

No.	Description	Date
	2nd City Comments	6/24/2020
	3rd City Comments	7/8/2020
	Inspection Comments	5/6/2021

CONSTRUCTION DOCUMENTS
Project Number
Date
2020 JUNE 19
Drawn By
CCD
Checked By
SBKC

A 101
SHEET SIZE: 24" x 36"



Website:
www.sb-kc.net

New Airplane Hangar
at Lees Summit Airport
2751 NE DOUGLAS ST., UNIT V
LEES SUMMIT, MO 64064



A S S O C I A T E S

SHAW HOFSTRA + ASSOCIATES
1800 CENTRAL STREET, SUITE 203
KANSAS CITY, MISSOURI 64108
P: 816.421.0505

ARCHITECTURAL CORPORATION
Certificate of Authority No. 00111130

This document, and all plans, specifications, and other information contained therein, are the exclusive property of SHAW HOFSTRA + ASSOCIATES. These documents are delivered and accepted by you in trust and on the expressed understanding that you will not copy, reproduce, or disseminate the information contained therein will be copied, reproduced, or delivered to others, except copies stamped "CONFIDENTIAL - NOT FOR CONSTRUCTION/PROPERTY OF SHAW HOFSTRA + ASSOCIATES." No reproducible copies shall be distributed without the express written consent of SHAW HOFSTRA + ASSOCIATES. The design and construction of the project shall be the exclusive property, design, and concepts of SHAW HOFSTRA + ASSOCIATES and may not be used or copied without the express written consent of SHAW HOFSTRA + ASSOCIATES.

SHAW HOFSTRA + ASSOCIATES
© 2020

CAD Construction Documents
Voice / Text : 913.638.3241
mgspencer@sbcglobal.net
Residential AutoCAD Drafting
and Design Services

No.	Description	Date
	2nd City Comments	6/24/2021
	3rd City Comments	7/8/2020
4	Inspection Comments	5/6/202

CONSTRUCTION
DOCUMENTS

Project Number	LS V
----------------	------

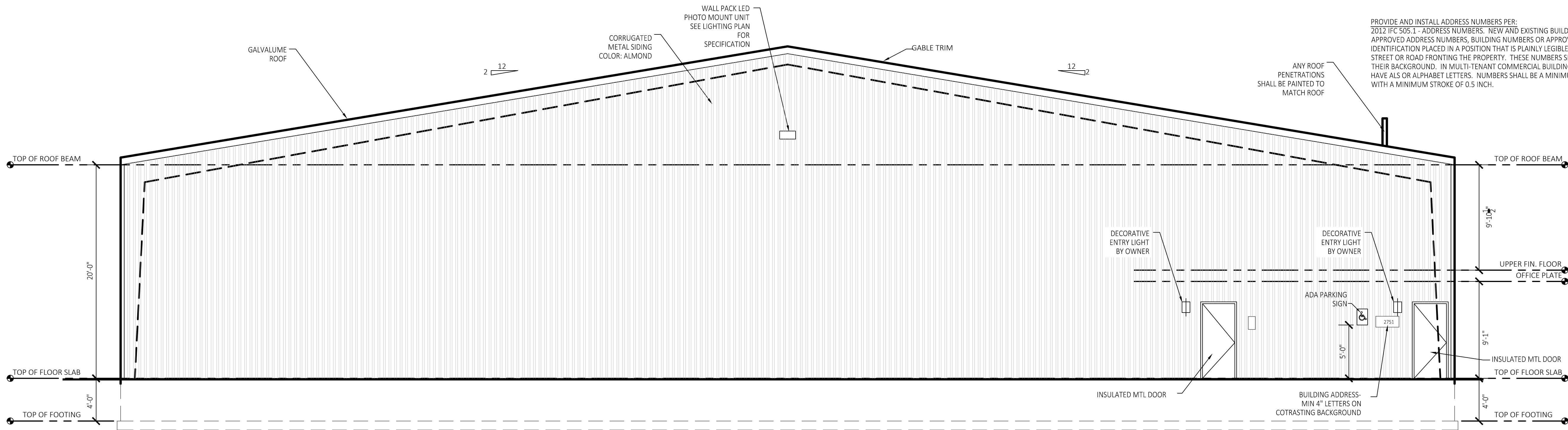
Date 2020 JUNE 19

Drawn By	CCD
----------	-----

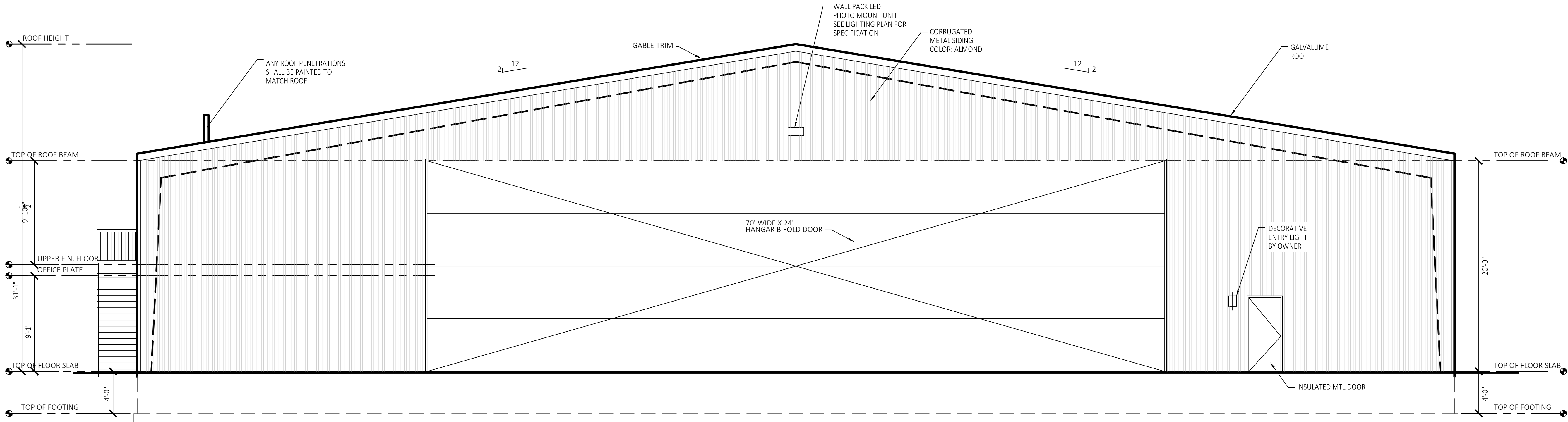
Checked By	SBKC
------------	------

A 102

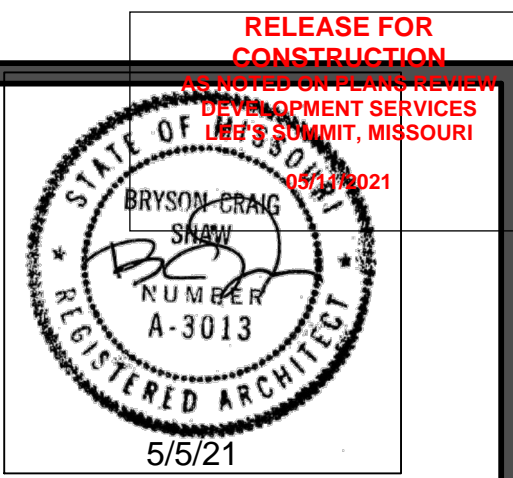
SHEET SIZE: 24" x 36"



SOUTH ELEVATION
SCALE 3/16"=1'-0"



NORTH ELEVATION
SCALE 3/16"=1'-0"



Signature Builders KC, LLC
2751 NE Douglas St. - Suite R
Lee's Summit, Missouri 64064
Phone: (816) 215-0891

Website:
www.sb-kc.net

New Airplane Hangar
at Lees Summit Airport
2751 NE DOUGLAS ST., UNIT V
LEES SUMMIT, MO 64064



SHAW HOFSTRA + ASSOCIATES
1800 CENTRAL STREET, SUITE 203
KANSAS CITY, MISSOURI 64108
P: 816.421.0505

ARCHITECTURAL CORPORATION
Certificate of Authority No. 00111130
This document, and all plans, specifications, and other information contained therein, are the exclusive property of SHAW HOFSTRA + ASSOCIATES. These documents are delivered and accepted by you in trust and on the expressed condition that neither these documents or the information contained therein will be copied, reproduced, or delivered to others, except copies stamped "CONFIDENTIAL - NOT FOR CONSTRUCTION". PROPERTY OF SHAW HOFSTRA + ASSOCIATES. No reproducible copies shall be distributed without the express written consent of SHAW HOFSTRA + ASSOCIATES. The design represented by these documents and plans is the exclusive property, design, and concepts of SHAW HOFSTRA + ASSOCIATES and may not be used or copied without the express written consent of SHAW HOFSTRA + ASSOCIATES.

SHAW HOFSTRA + ASSOCIATES
© 2020

CAD Corporation Documents
Voice / Text: 913.638.3241
hgs@sh-ha.com
Residential AutoCAD Drafting
and Design Services

No.	Description	Date
	2nd City Comments	6/24/2020
	3rd City Comments	7/8/2020
	Inspection Comments	5/6/2021

CONSTRUCTION DOCUMENTS

Project Number **LS V**

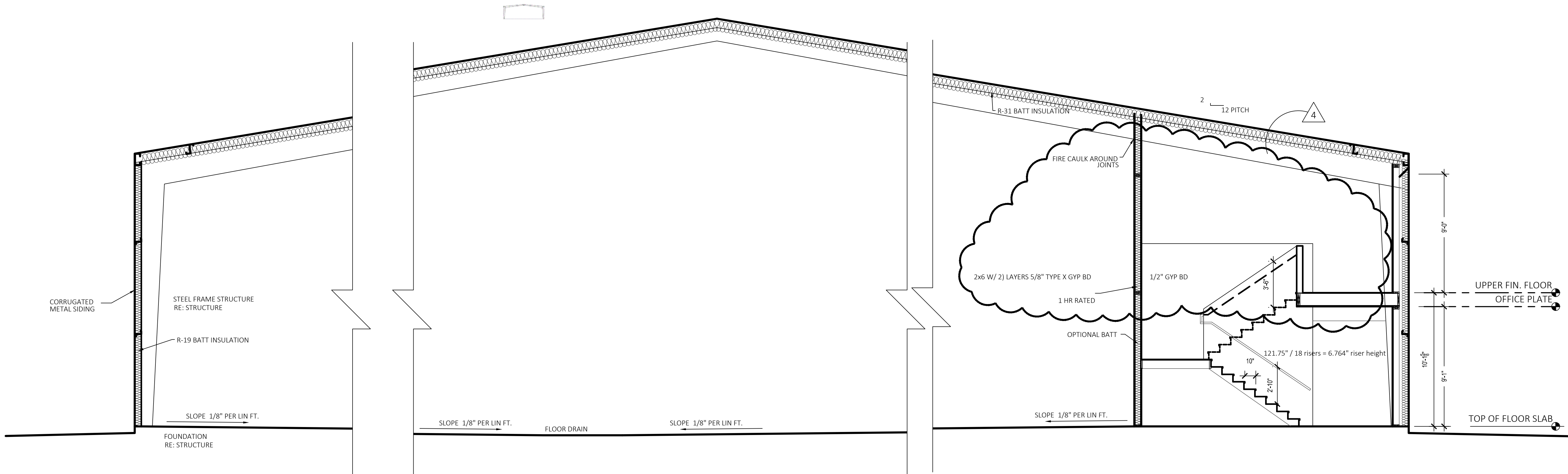
Date **2020 JUNE 19**

Drawn By **CCD**

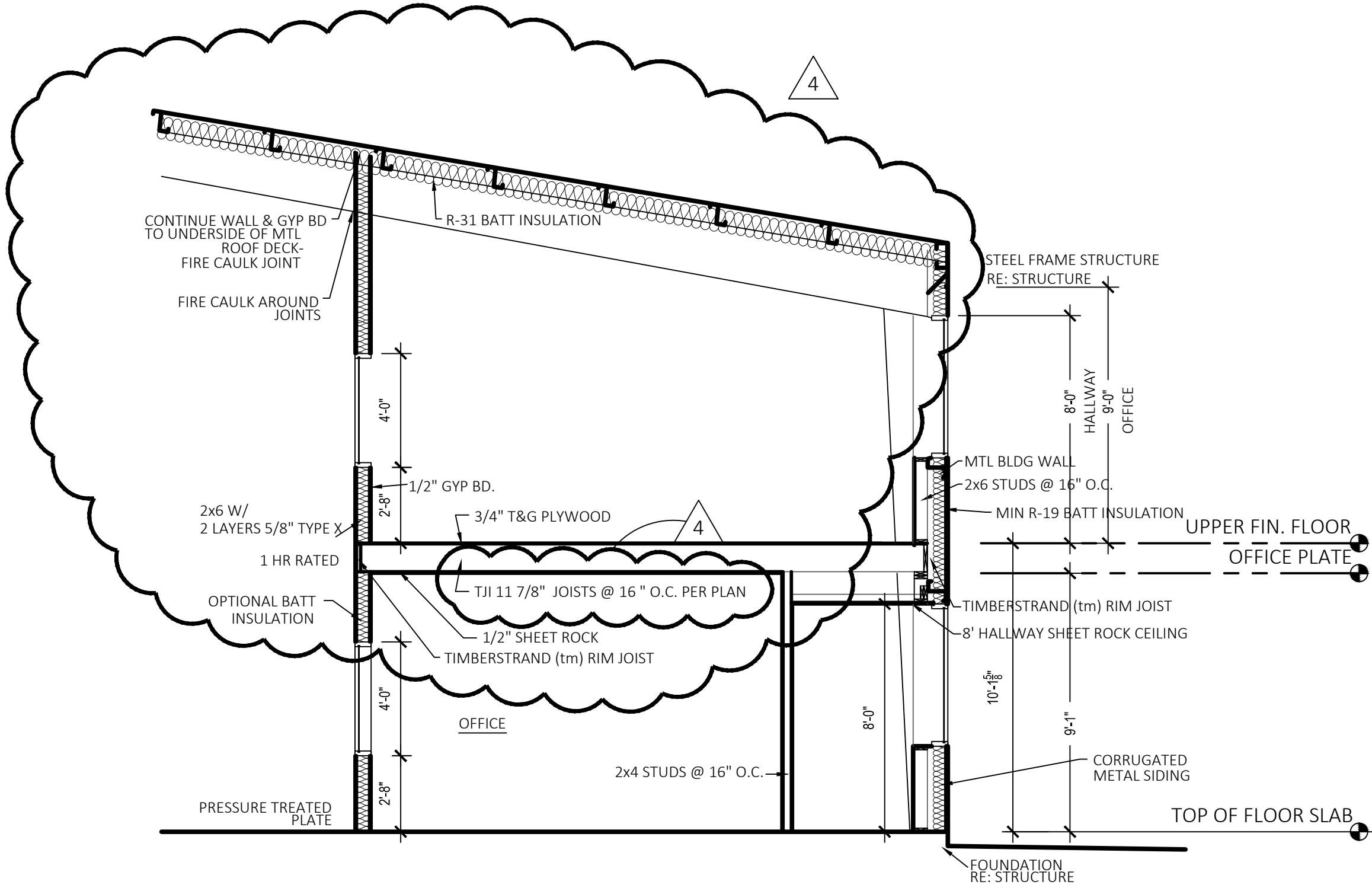
Checked By **SBKC**

A 103

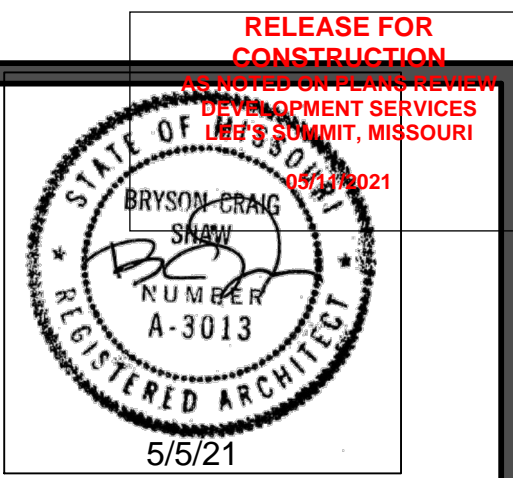
SHEET SIZE: 24" x 36"



BLDG SECTION
SCALE 1/4"=1'-0"



BLDG SECTION @ MEZZANINE
SCALE 1/4"=1'-0"



Signature Builders KC, LLC
2751 NE Douglas St. - Suite R
Lee's Summit, Missouri 64064
Phone: (816) 215-0891

Website:
www.sb-kc.net

New Airplane Hangar
at Lees Summit Airport
2751 NE DOUGLAS ST, UNIT V
LEES SUMMIT, MO 64064



SH ASSOCIATES
SHAW HOFSTRA + ASSOCIATES
1800 CENTRAL STREET, SUITE 203
KANSAS CITY, MISSOURI 64108
P: 816.421.0505

ARCHITECTURAL CORPORATION
Certificate of Authority No. 00111130
This document, and all plans, specifications, and other information contained therein, are the exclusive property of SHAW HOFSTRA + ASSOCIATES. These documents are delivered and accepted by you in trust and on the expressed condition that neither these documents or the information contained therein will be copied, reproduced, or delivered to others, except copies stamped "CONFIDENTIAL - NOT FOR CONSTRUCTION". No reproducible copies shall be distributed without the express written consent of SHAW HOFSTRA + ASSOCIATES. The design represented by these documents and plans is the exclusive property, design, and concepts of SHAW HOFSTRA + ASSOCIATES and may not be used or copied without the express written consent of SHAW HOFSTRA + ASSOCIATES.

SHAW HOFSTRA + ASSOCIATES
© 2020

CAD Construction Documents
Voice / Text: 913.638.3241
mshaw@sb-kc.com
Residential AutoCAD Drafting
and Design Services

No.	Description	Date
	2nd City Comments	6/24/2020
	3rd City Comments	7/8/2020
2	Inspection Comments	4/5/2021

CONSTRUCTION DOCUMENTS

Project Number LS V

Date 2020 JUNE 19

Drawn By CCD

Checked By SBKC

A 104

SHEET SIZE: 24" x 36"

