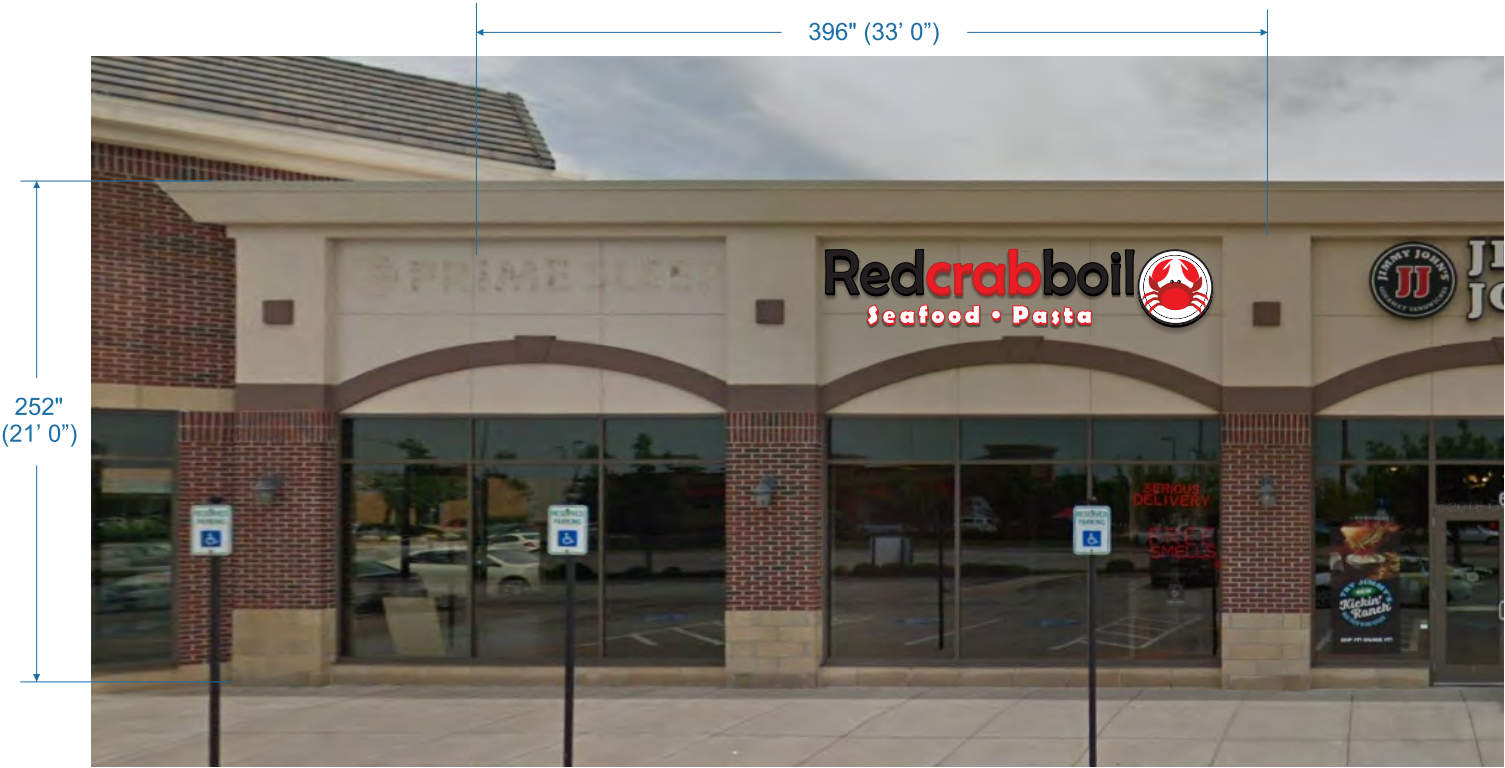


ELECTRICAL POWER (BY OTHERS) TO BE RUN WITHIN 3 FT. OF SIGN INSTALL LOCATION BEFORE INSTALL CAN BEGIN.



WEST ELEVATION

SCALE" 1/8"=1'



LOGO COLORS:  
TRANSLUCENT TOMATO RED,  
TRANSLUCENT CARDINAL RED,  
BLACK

QTY:(1) ONE SET INTERNALLY ILLUMINATED CHANNEL LETTERS  
ALUMINUM/ACRYLIC CONSTRUCTION  
WHITE ACRYLIC FACES: BLACK/WHITE PERF VINYL AND RED TRANSLUCENT VINYL  
BLACK & RED 3" DEEP RETURNS, BLACK & RED 1" TRIM CAP  
CHANNELS AND LOGO WILL BE FLUSH MOUNTED TO BUILDING  
ALL PENETRATION INTO BUILDING SEALED WITH CLEAR WATERPROOF SILICONE

ELEVATION SQ. FT.:693  
SG. FT. ALLOWED:10  
SIGN SQ. FT.:51.2

Drawing Prepared by:



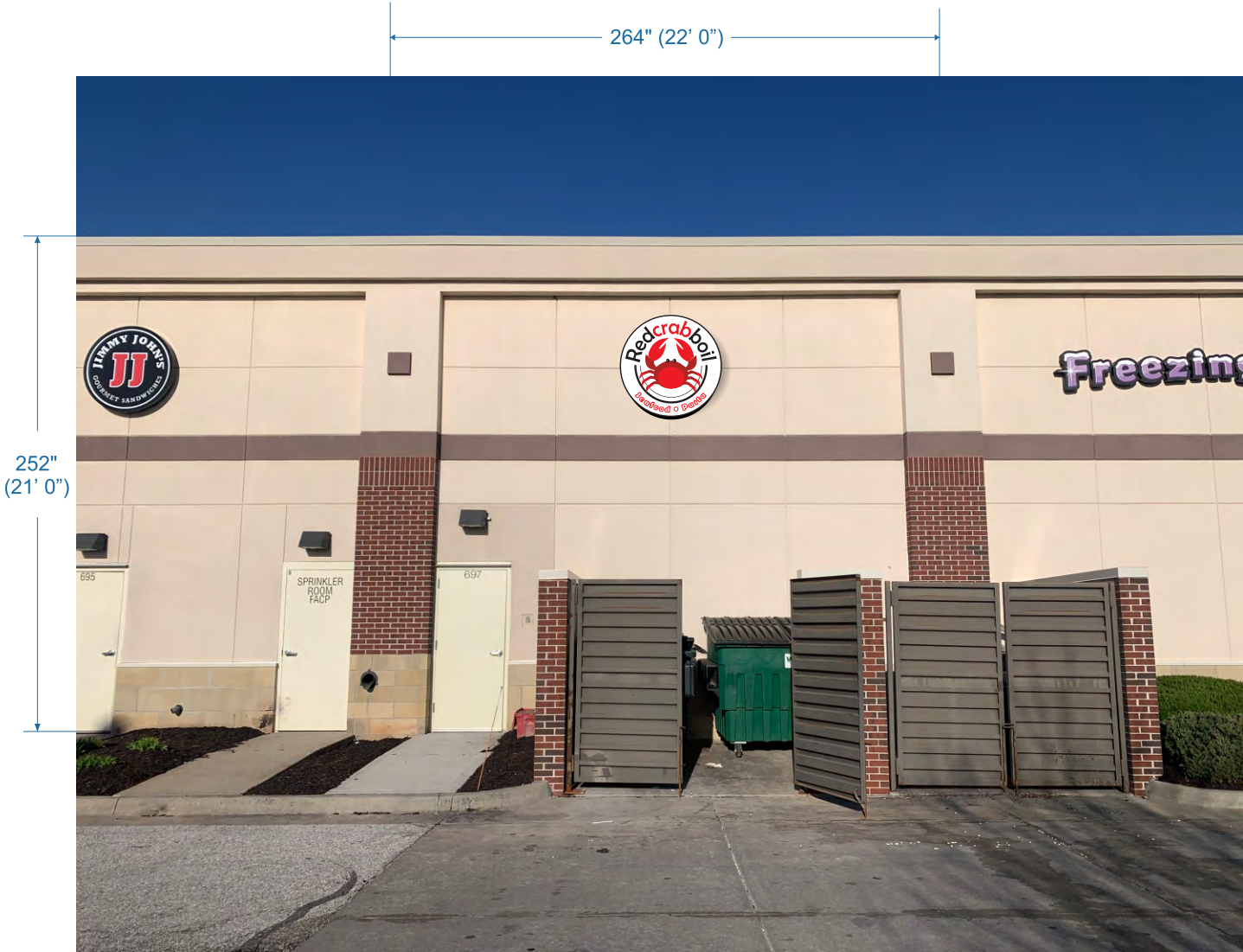
Location: 697 NW Blue Parkway,  
Lee's Summit, MO 64086  
Project #: Loc #  
Filename:  
RED CRAB BOIL SEAFOOD + PASTA REV04

Drawing Prepared for:



Rev #:	Req #:	Date	Req by:	Drawn by:	Revision Description:	Drawings are the exclusive property of Midwest Sign Company
Original		04/05/21	AB	MG		
02		04/07/21	AB	MG	Drop SEAFOOD + PASTA tagline on all signs	
					Change Lower case "redcrab" to "U/C "REDCRAB"	
03		04/20/21	AB	MG	Add tagline SEAFOOD BOIL PASTA to West Elev. +	Approved By: Date:
					Circular Logo on East Elev. + Monument panels.	
					Add REDCRAB to Circular logo on East Elev.	
04		4/30/21	AB	RH		

ELECTRICAL POWER (BY OTHERS) TO BE RUN WITHIN 3 FT. OF SIGN INSTALL LOCATION BEFORE INSTALL CAN BEGIN.



LOGO COLORS: TRANSLUCENT TOMATO RED,  
TRANSLUCENT CARDINAL RED, BLACK



QTY:(1) ONE INTERNALLY ILLUMINATED CHANNEL LOGO  
ALUMINUM/ ACRYLIC CONSTRUCTION  
WHITE ACRYLIC FACES: BLACK/ RED TRANSLUCENT VINYL  
BLACK 3" DEEP RETURNS, BLACK 1" TRIM CAP  
LOGO WILL BE FLUSH MOUNTED TO BUILDING  
ALL PENETRATION INTO BUILDING SEALED WITH CLEAR WATERPROOF SILICONE

ELEVATION SQ. FT.:462  
SQ. FT. ALLOWED: 10  
SIGN SQ. FT.: 24.2

Drawing Prepared by:



Location: 697 NW Blue Parkway,  
Lee's Summit, MO 64086  
Project #: \_\_\_\_\_  
Loc # \_\_\_\_\_  
Filename: \_\_\_\_\_  
RED CRAB BOIL SEAFOOD + PASTA REV04

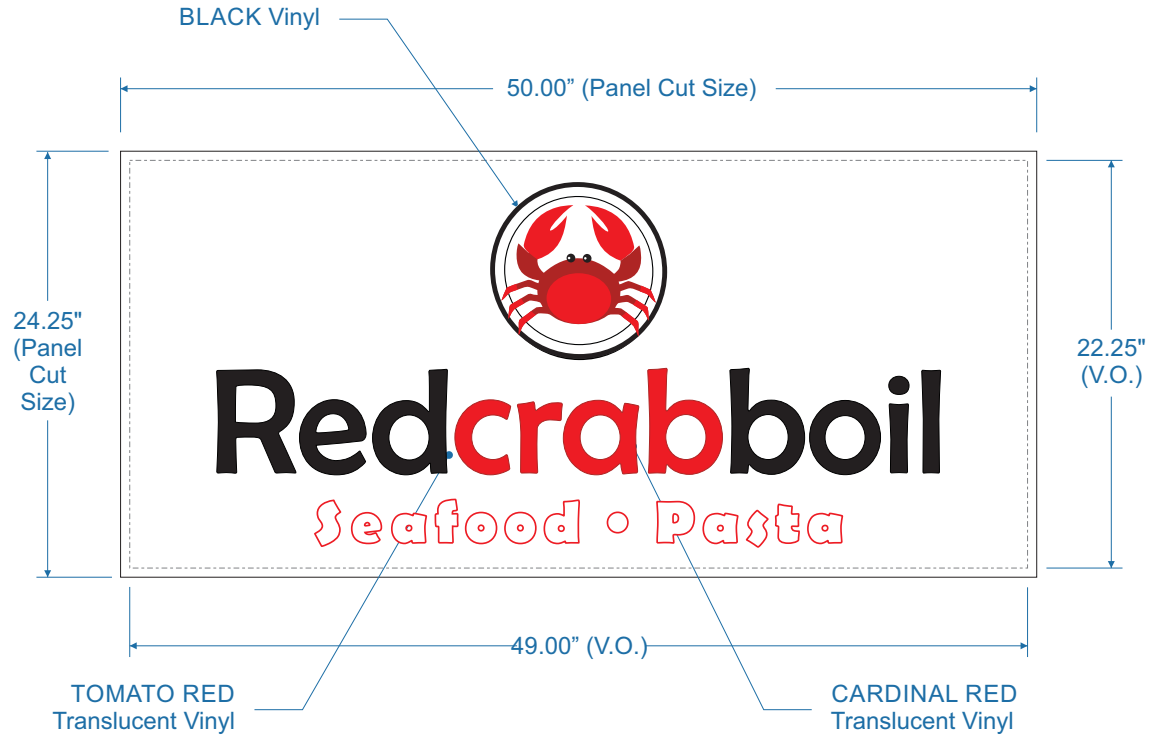
Drawing Prepared for:



Rev #:	Req #:	Date	Req by:	Drawn by:	Revision Description:	Drawings are the exclusive property of Midwest Sign Company
Original		04/05/21	AB	MG		
02		04/07/21	AB	MG	Drop SEAFOOD + PASTA tagline on all signs Change Lower case "redcrab" to "U/C "REDCRAB"	
03		04/20/21	AB	MG	Add tagline SEAFOOD BOIL PASTA to West Elev. + Circular Logo on East Elev., + Monument panels.	Approved By: _____ Date: _____
					Add REDCRAB to Circular logo on East Elev.	
04		4/30/21	AB	RH		



**CONCEPTUAL VIEW  
OF INSTALLED PANELS**



**ACRYLIC/ VINYL FACE(S) F/ EXISTING D/S MONUMENT (EXTERIOR)**

- Qty: (2) Two Total Acrylic/ Vinyl Face(s). (BOTH FACE(S) IDENTICAL
- .177" (3/16") Thick WHITE Sign Grade Acrylic, cut to Size/ Shape.
- Plotter-cut TRANSLUCENT Colored Vinyl applied.

Drawing Prepared by:



**Location:**

697 NW Blue Parkway,  
Lee's Summit, MO 64086

**Project #:**

**Loc #**

**Filename:**

Red Crab Seafood+Pasta\_Sign Pkg\_Rev04

Drawing Prepared for:



**REDCRAB**

Rev #:	Req #:	Date	Req by:	Drawn by:	Revision Description:	Drawings are the exclusive property of Midwest Sign Company	
Original		04/05/21	AB	MG			
02		04/07/21	AB	MG	Drop SEAFOOD + PASTA tagline on all signs Change Lower case "redcrab" to "U/C "REDCRAB"		
03		04/20/21	AB	MG	Add tagline SEAFOOD BOIL PASTA to West Elev. + Circular Logo on East Elev., + Monument panels.	Approved By:	Date:
04		05/03/21	AB	RH	Add REDCRAB to Circular logo on East Elev.		