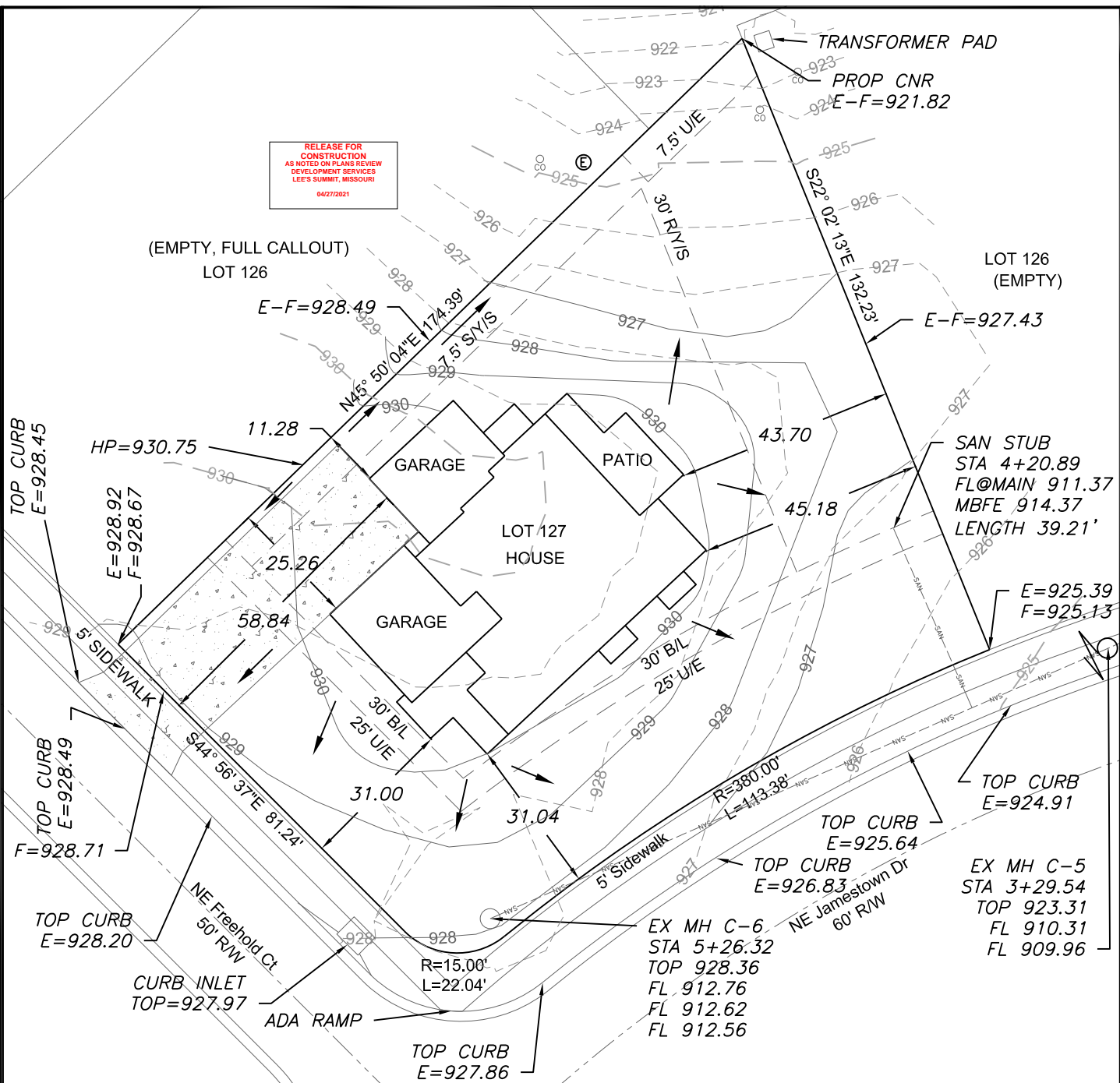


RELEASE FOR  
CONSTRUCTION  
AS NOTED ON PLANS REVIEW  
DEVELOPMENT SERVICES  
LEE'S SUMMIT, MISSOURI  
04/27/2021



#### LEGEND

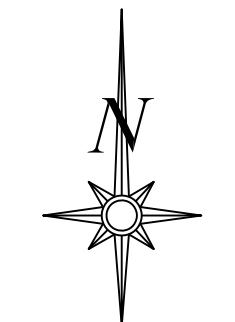
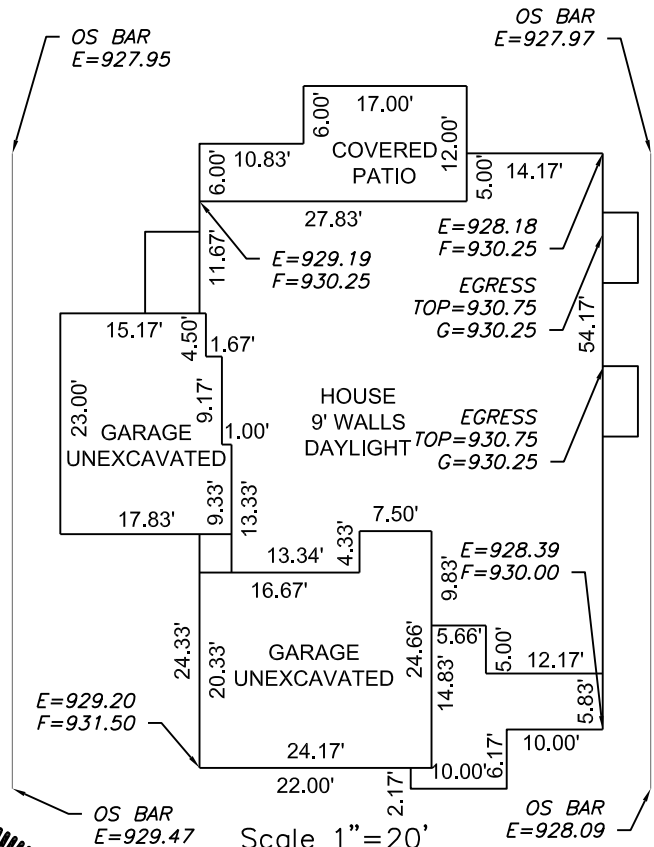
- Gas Meter
- Telephone or Fiber-Optic Pedestal
- Cable TV Pedestal
- Electric Pedestal
- Light Pole
- Mailbox
- Fire Hydrant
- Water Valve

#### PROPOSED HOUSE

TOP FOUNDATION = 931.00  
GARAGE FLOOR = 930.50  
TOP FOOTING = 922.00  
BASEMENT FLOOR = 922.33  
DRIVEWAY SLOPE = 4.7%  
E = EXISTING ELEVATION  
F = PROPOSED FINAL ELEVATION  
G = ADJACENT GRADE AT EGRESS  
U/E = UTILITY EASEMENT  
B/L = BUILDING LINE  
S/Y/S = SIDE YARD SETBACK  
R/Y/S = REAR YARD SETBACK

#### NOTES

- BUILDER TO VERIFY ALL BUILDING ELEVATIONS AND DIMENSIONS.
- THIS PLOT PLAN DOES NOT CONSTITUTE A BOUNDARY SURVEY.
- THE EASEMENTS SHOWN ON THIS PLOT PLAN ARE TAKEN FROM THE FINAL PLAT. OTHER EASEMENTS MAY EXIST.



Scale 1"=30'

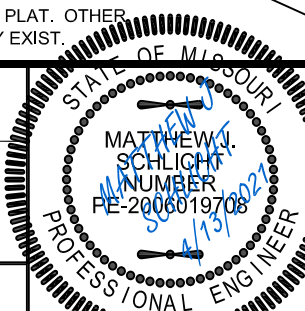
#### LOT INFORMATION

16,036.42 SQ. FT.  
MBOE(RIGHT)=923.49  
MBOE(LEFT)=926.07  
MBFE =914.37  
ADDRESS  
4801 NE FREEHOLD COURT

#### LEGAL DESCRIPTION

LOT 127, MONTICELLO 4TH PLAT,  
A SUBDIVISION AS RECORDED IN  
LEE'S SUMMIT, JACKSON  
COUNTY, MISSOURI.

**ENGINEERING SOLUTIONS**  
ENGINEERING & SURVEYING  
50 SE 30TH STREET  
LEE'S SUMMIT, MO 64082  
P:(816) 623-9888 F:(816) 623-9849  
WWW.ENGINEERINGSOLUTIONSKC.COM



#### PLOT PLAN - LOT 127

MONTICELLO - 4TH PLAT  
LEE'S SUMMIT, JACKSON COUNTY, MISSOURI

SAB HOMES  
200 NW COMMERCE COURT  
LEE'S SUMMIT, MO 64086

PROJECT NO.	FILE NAME	DATE	SHEET	OF
1	LOT 127, MONTICELLO	1/14/21	1	1
Rev:				

THIS DRAWING IS NOT VALID UNLESS THE SIGNATURE, DATE AND SEAL OF THE ENGINEER WHO SUPERVISED THE PREPARATION OF THIS DRAWING HAS BEEN AFFIXED HERETO.