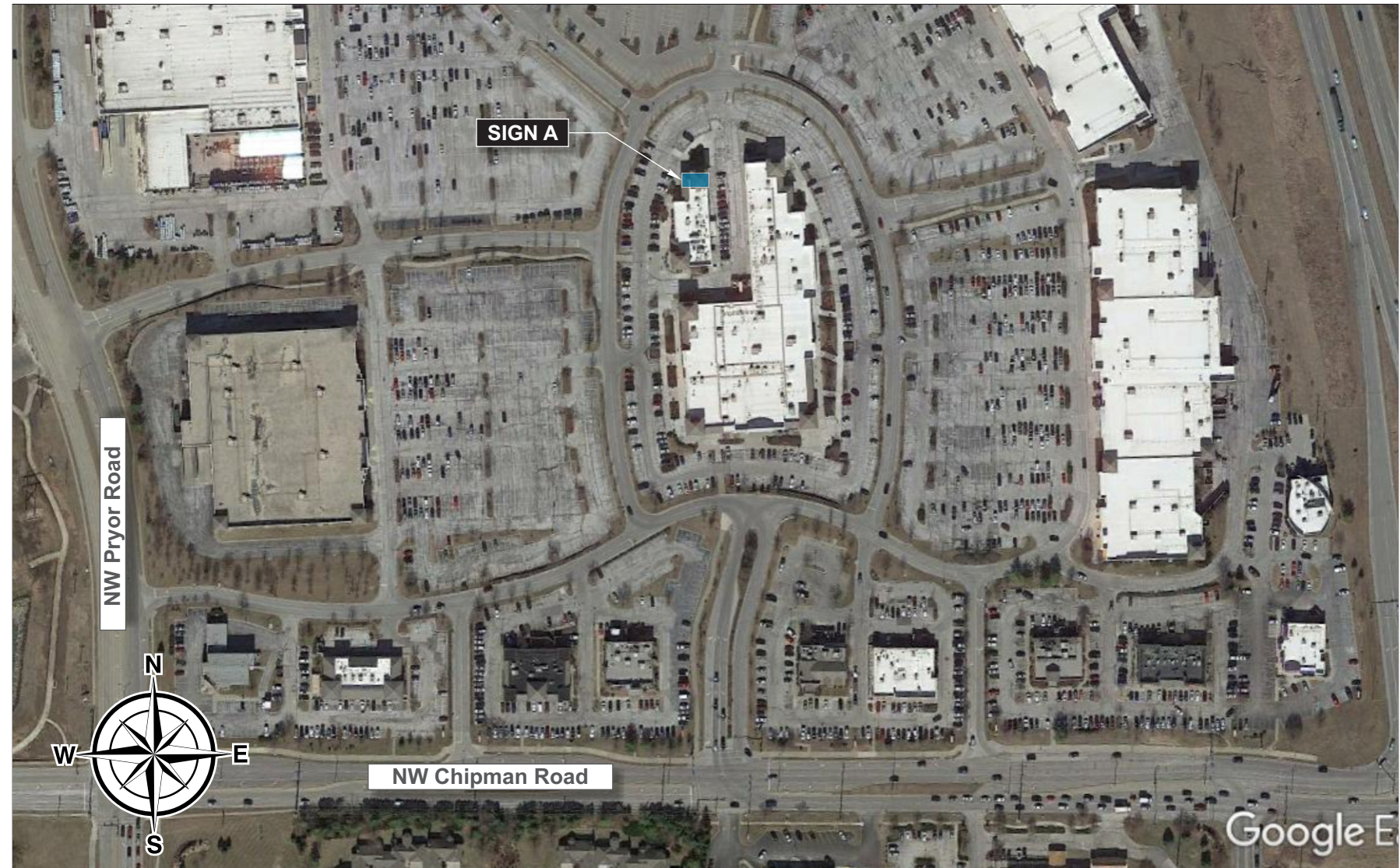


MILAN Laser Hair Removal

1728 Nw Chipman Rd Lees Summit, MO 64081-3936

SIGN A	24" MILAN/ Tagline
Sign Type:	Individual Channel Letters w/ tagline Channel Letters on Backer
Illumination:	Internally Illuminated w/ LED's
Square Footage:	51.67



This rendering is the property of Southwest Signs, Inc. It is for the exclusive use of Southwest Signs, Inc. and the party for which it was intended; the requestor. It is an unpublished original drawing not to be distributed, reproduced or exhibited without the explicit consent of Southwest Signs, Inc. Please contact your Account Manager for questions regarding this statement.

Milan Laser Hair Removal
1728 Nw Chipman Rd
Lees Summit, MO 64081-3936

Project ID#: **127033**
Project Mgr: Rob Sciarra
Designer: Mike DeMarco
Created on: 03/27/2021

REVISION

R1 03/29/21 MD Updated sign A to 24" linear

SIGN A	24" MILAN/ Tagline
Sign Type:	Individual Channel Letters w/ tagline Channel Letters on Backer
Illumination:	Internally Illuminated w/ LED's
Square Footage:	51.67



Front Elevation (West)

Scale: 1/8" = 1'-0"

Allowable Square Footage this Elevation:	76.50
Formula: 17' x 45'-0" = 76.50	
Actual Square Footage this Elevation:	51.67



This rendering is the property of Southwest Signs, Inc. It is for the exclusive use of Southwest Signs, Inc. and the party for which it was intended; the requestor. It is an unpublished original drawing not to be distributed, reproduced or exhibited without the explicit consent of Southwest Signs, Inc. Please contact your Account Manager for questions regarding this statement.

Milan Laser Hair Removal
1728 Nw Chipman Rd
Lees Summit, MO 64081-3936

Project ID#: **127033**
Project Mgr: Rob Sciarra
Designer: Mike DeMarco
Created on: 03/27/2021

REVISION	R1 03/29/21 MD Updated sign A to 24" linear

