 THIS SIGN IS INTENDED TO BE INSTALLED IN ACCORDANCE WITH ARTICLE 600 OF THE NATIONAL ELECTRICAL CODE AND/OR OTHER APPLICABLE LOCAL CODES. THIS INCLUDES PROPER GROUNDING & BONDING OF THE SIGN. SIGN WILL BEAR UL LABEL(S).





Design #

0626447AR7

Sheet 2 of 9

Client

#

Address

SWC Douglas St - St Lukes Blvd,  
Lee's Summit, MO

Acct. Rep. DEBBIE MOLTZ  
Coordinator LAUREN STACKHOUSE

Designer IH

Date 8/6/20

Approval / Date

Client

Sales

Estimating

Art

Engineering

Landlord

Revision/Date

R1(8-7-20)H: Delete raceways from channel letters.  
(not allowed by City)

R2(11-11-21)H: Change orange LEDs to white. Update  
package.

R3(1-13-21)H: Update site plan & elevations per latest  
set of plans. Ensure plan for placement of menuboards  
is shown accurately.

R4(02-12-21)TQ: Moved monument sign back behind  
the 20' building setback line.

R5(3-4-21)H: The directions (N, E, S, W) on elevations  
didn't match site plan. Customer provided corrected  
elevations. Please update the directions on the  
elevations in our sign package so that they now match  
the site plan.

R6(3-19-21)H: Delete int MB

R7(4-14-21)H: Change sign E to a routed cabinet. The  
white stripes in the logo can be acrylic but the main  
white background cannot light. Show night view



chandler signs.com

National Headquarters 14201 Sovereign Road #101  
Fort Worth, TX 76155  
(214) 902-2000 Fax (214) 902-2044

San Antonio 17319 San Pedro Ave  
Ste 200  
San Antonio, TX 78232  
(210) 349-3804 Fax (210) 349-8724

West Coast 3220 Executive Ridge Dr  
Ste 250  
Vista, CA 92081  
(760) 734-1708 Fax (760) 734-3752

Northeast US 2301 River Road  
Suite 201  
Louisville, KY 40206  
(502) 897-9800 Cell (502) 554-2575

Florida 2584 Sand Hill Point Circle  
Davenport, FL 33837  
(863) 426-1100 Fax (863) 424-1160

Georgia 111 Woodstone Place  
Dawsonville, GA 30534  
(678) 725-8852 Fax (210) 349-8724

South Texas PO BOX 125 206 Doral Drive  
Portland, TX 78374  
(961) 563-5599 Fax (361) 643-6533

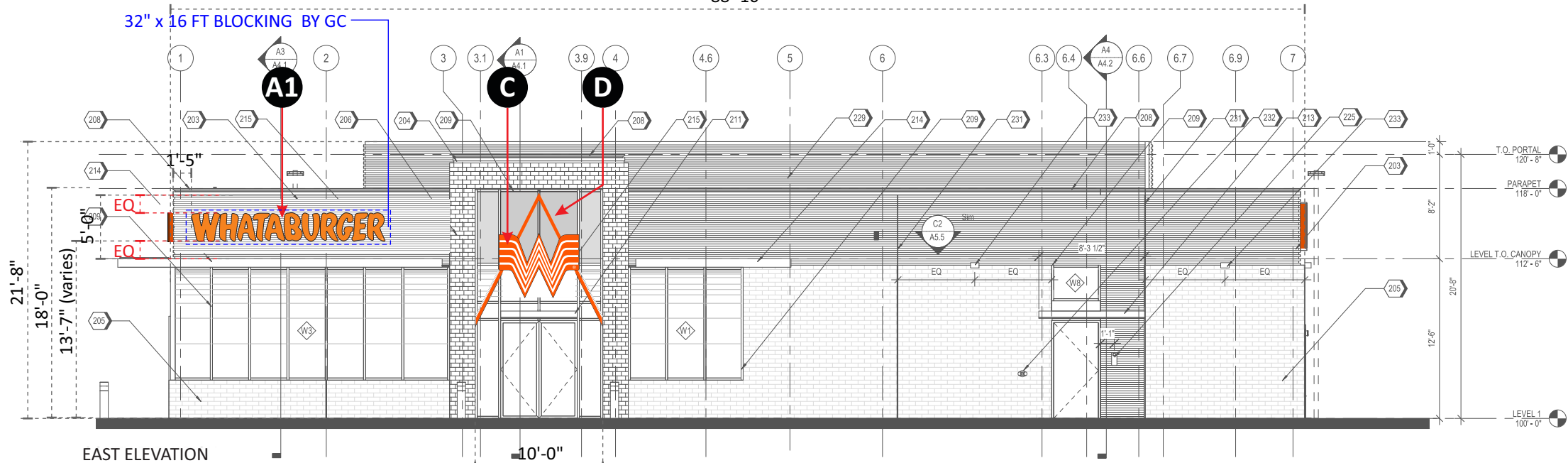
This drawing is the property of  
Chandler Signs, LLC.  
All rights to its use for reproduction  
are reserved by Chandler Signs, LLC

FINAL ELECTRICAL  
CONNECTION BY  
CUSTOMER

THIS SIGN IS INTENDED TO BE INSTALLED  
IN ACCORDANCE WITH ARTICLE 600 OF THE  
NATIONAL ELECTRICAL CODE AND/OR OTHER  
APPLICABLE LOCAL CODES. THIS INCLUDES  
PROPER GROUNDING & BONDING OF THE SIGN.  
SIGN WILL BEAR UL LABEL(S).

88'-10"

32" x 16 FT BLOCKING BY GC



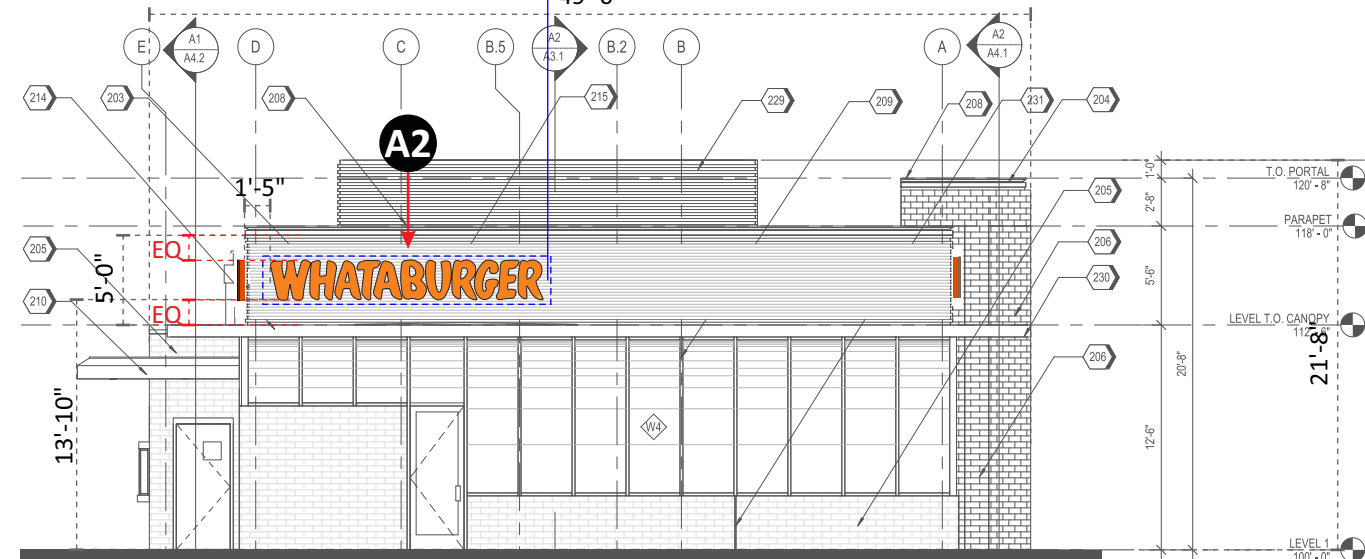
KEYNOTES	
KEYNOTE LEGEND	
1	BRICK
2	BRICK
3	BRICK
4	BRICK
5	BRICK
6	BRICK
7	BRICK
8	BRICK
9	BRICK
10	BRICK
11	BRICK
12	BRICK
13	BRICK
14	BRICK
15	BRICK
16	BRICK
17	BRICK
18	BRICK
19	BRICK
20	BRICK
21	BRICK
22	BRICK
23	BRICK
24	BRICK
25	BRICK
26	BRICK
27	BRICK
28	BRICK
29	BRICK
30	BRICK
31	BRICK
32	BRICK
33	BRICK
34	BRICK
35	BRICK
36	BRICK
37	BRICK
38	BRICK
39	BRICK
40	BRICK
41	BRICK
42	BRICK
43	BRICK
44	BRICK
45	BRICK
46	BRICK
47	BRICK
48	BRICK
49	BRICK
50	BRICK
51	BRICK
52	BRICK
53	BRICK
54	BRICK
55	BRICK
56	BRICK
57	BRICK
58	BRICK
59	BRICK
60	BRICK
61	BRICK
62	BRICK
63	BRICK
64	BRICK
65	BRICK
66	BRICK
67	BRICK
68	BRICK
69	BRICK
70	BRICK
71	BRICK
72	BRICK
73	BRICK
74	BRICK
75	BRICK
76	BRICK
77	BRICK
78	BRICK
79	BRICK
80	BRICK
81	BRICK
82	BRICK
83	BRICK
84	BRICK
85	BRICK
86	BRICK
87	BRICK
88	BRICK
89	BRICK
90	BRICK
91	BRICK
92	BRICK
93	BRICK
94	BRICK
95	BRICK
96	BRICK
97	BRICK
98	BRICK
99	BRICK
100	BRICK

CODE TO EXTERIOR MATERIALS

EQ-1	BRICK
EQ-2	BRICK
EQ-3	BRICK
EQ-4	BRICK
EQ-5	BRICK
EQ-6	BRICK
EQ-7	BRICK
EQ-8	BRICK
EQ-9	BRICK
EQ-10	BRICK
EQ-11	BRICK
EQ-12	BRICK
EQ-13	BRICK
EQ-14	BRICK
EQ-15	BRICK
EQ-16	BRICK
EQ-17	BRICK
EQ-18	BRICK
EQ-19	BRICK
EQ-20	BRICK
EQ-21	BRICK
EQ-22	BRICK
EQ-23	BRICK
EQ-24	BRICK
EQ-25	BRICK
EQ-26	BRICK
EQ-27	BRICK
EQ-28	BRICK
EQ-29	BRICK
EQ-30	BRICK
EQ-31	BRICK
EQ-32	BRICK
EQ-33	BRICK
EQ-34	BRICK
EQ-35	BRICK
EQ-36	BRICK
EQ-37	BRICK
EQ-38	BRICK
EQ-39	BRICK
EQ-40	BRICK
EQ-41	BRICK
EQ-42	BRICK
EQ-43	BRICK
EQ-44	BRICK
EQ-45	BRICK
EQ-46	BRICK
EQ-47	BRICK
EQ-48	BRICK
EQ-49	BRICK
EQ-50	BRICK
EQ-51	BRICK
EQ-52	BRICK
EQ-53	BRICK
EQ-54	BRICK
EQ-55	BRICK
EQ-56	BRICK
EQ-57	BRICK
EQ-58	BRICK
EQ-59	BRICK
EQ-60	BRICK
EQ-61	BRICK
EQ-62	BRICK
EQ-63	BRICK
EQ-64	BRICK
EQ-65	BRICK
EQ-66	BRICK
EQ-67	BRICK
EQ-68	BRICK
EQ-69	BRICK
EQ-70	BRICK
EQ-71	BRICK
EQ-72	BRICK
EQ-73	BRICK
EQ-74	BRICK
EQ-75	BRICK
EQ-76	BRICK
EQ-77	BRICK
EQ-78	BRICK
EQ-79	BRICK
EQ-80	BRICK
EQ-81	BRICK
EQ-82	BRICK
EQ-83	BRICK
EQ-84	BRICK
EQ-85	BRICK
EQ-86	BRICK
EQ-87	BRICK
EQ-88	BRICK
EQ-89	BRICK
EQ-90	BRICK
EQ-91	BRICK
EQ-92	BRICK
EQ-93	BRICK
EQ-94	BRICK
EQ-95	BRICK
EQ-96	BRICK
EQ-97	BRICK
EQ-98	BRICK
EQ-99	BRICK
EQ-100	BRICK

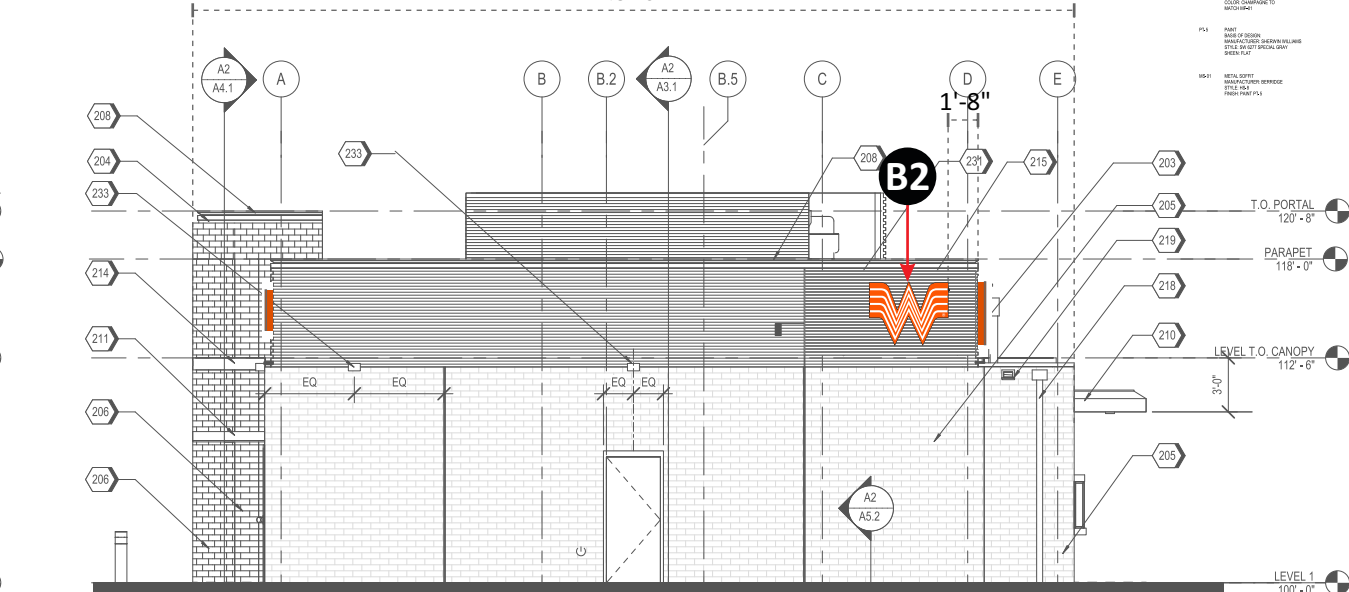
EAST ELEVATION

32" x 16 FT BLOCKING BY GC



NORTH ELEVATION

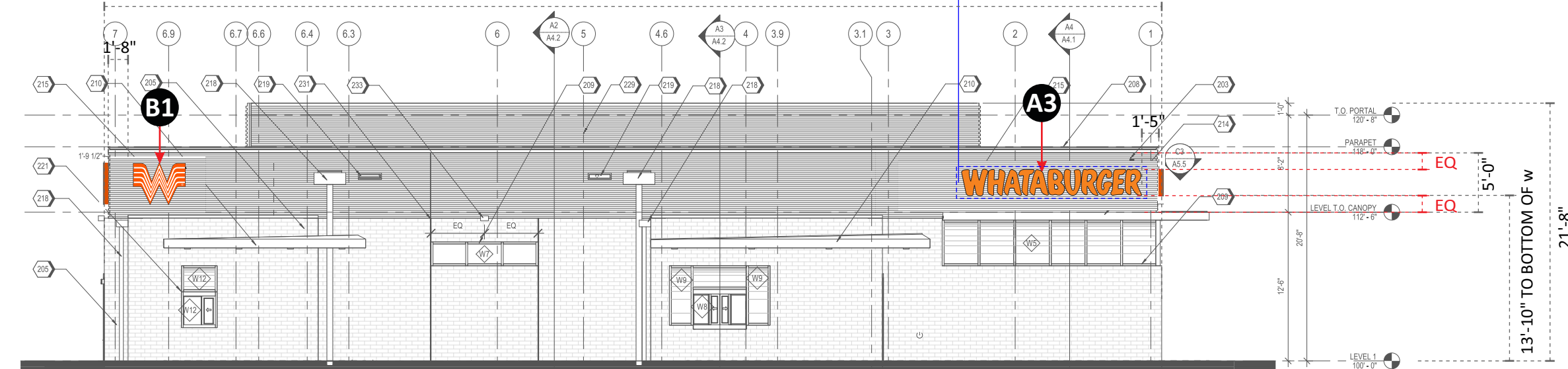
49'-0"



SOUTH ELEVATION

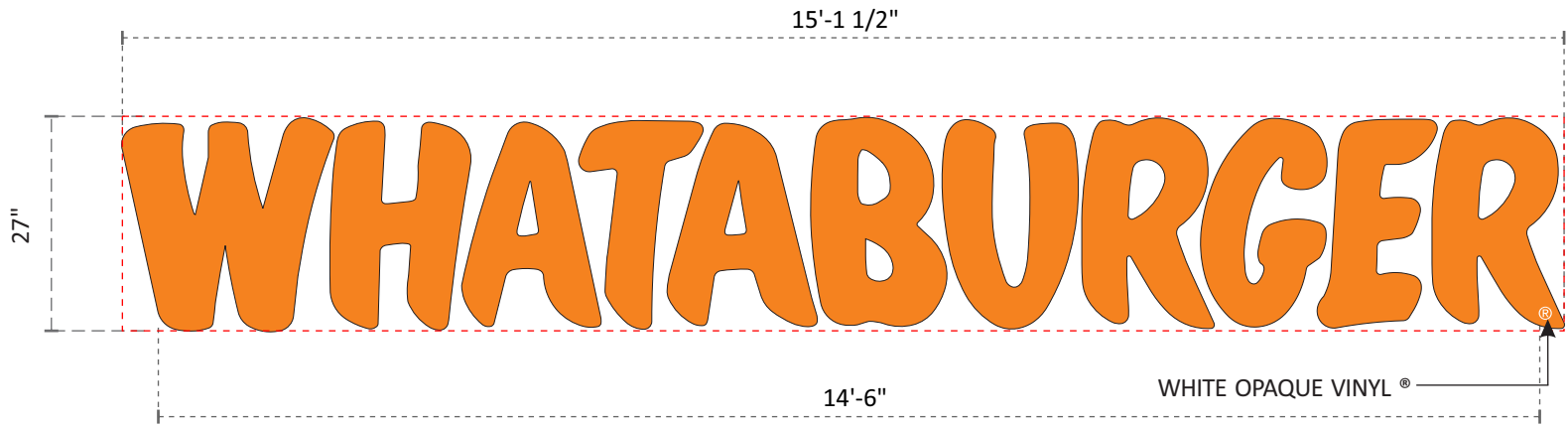
88'-11"

32" x 16 FT BLOCKING BY GC



WEST ELEVATION

SCALE 3/32" = 1'-0"



A1 A2 A3

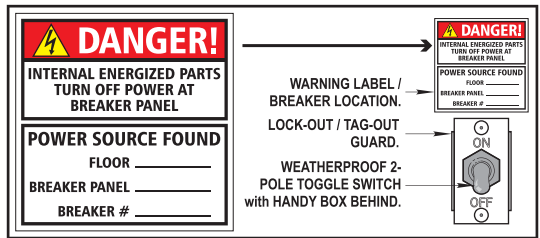
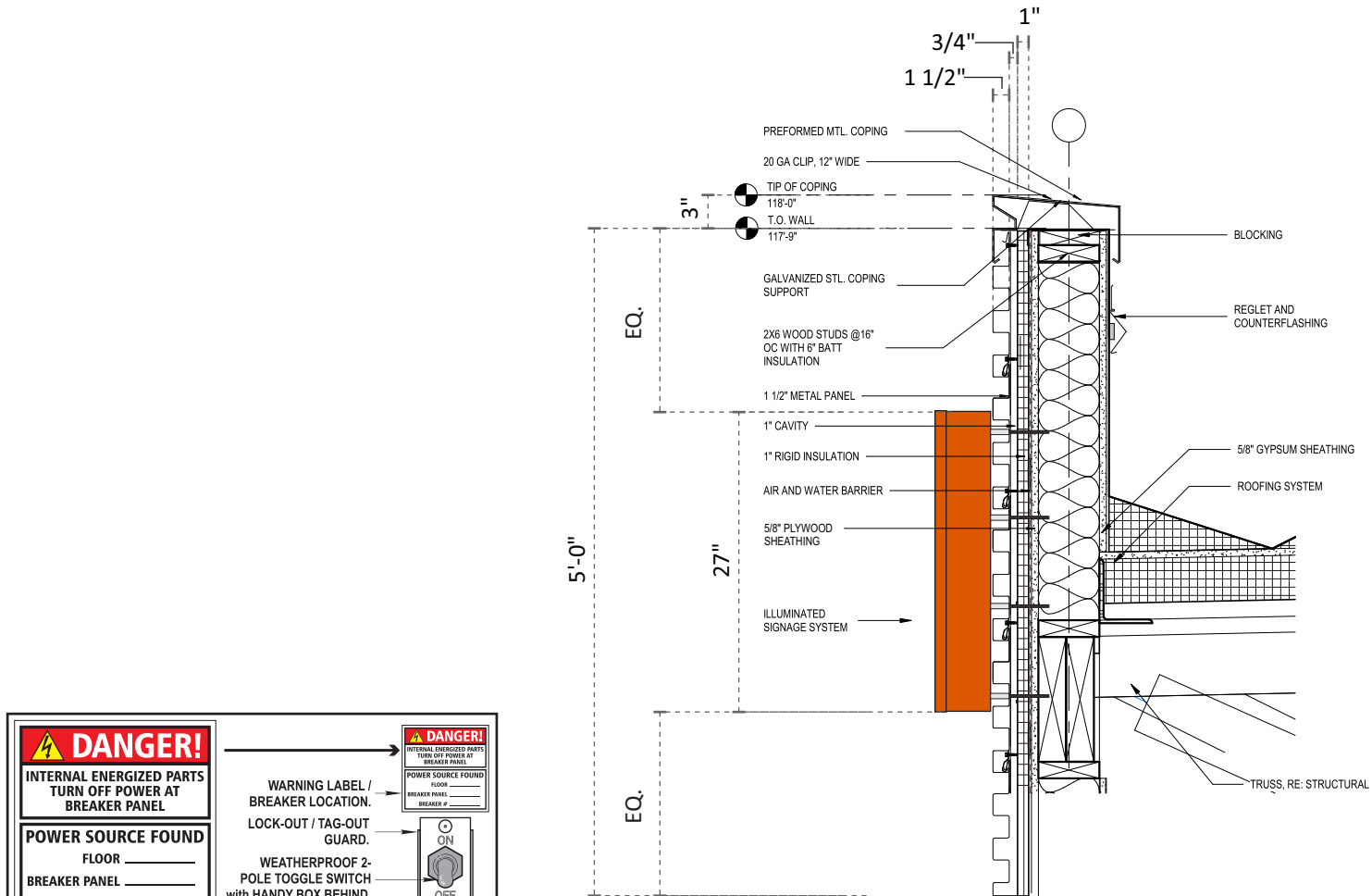
27" PCL

THREE ( 3 ) SETS REQUIRED - MANUFACTURE AND INSTALL

SCALE 1/2"=1'-0"

34 SQ. FT.

**NOTE:** PRIMARY ELECTRICAL PROVIDED BY G.C. WILL BE BELOW ROOFLINE. GC WILL PROVIDE 5/8" PLYWOOD BLOCKING BEHIND THE CORRUGATED PANELS.

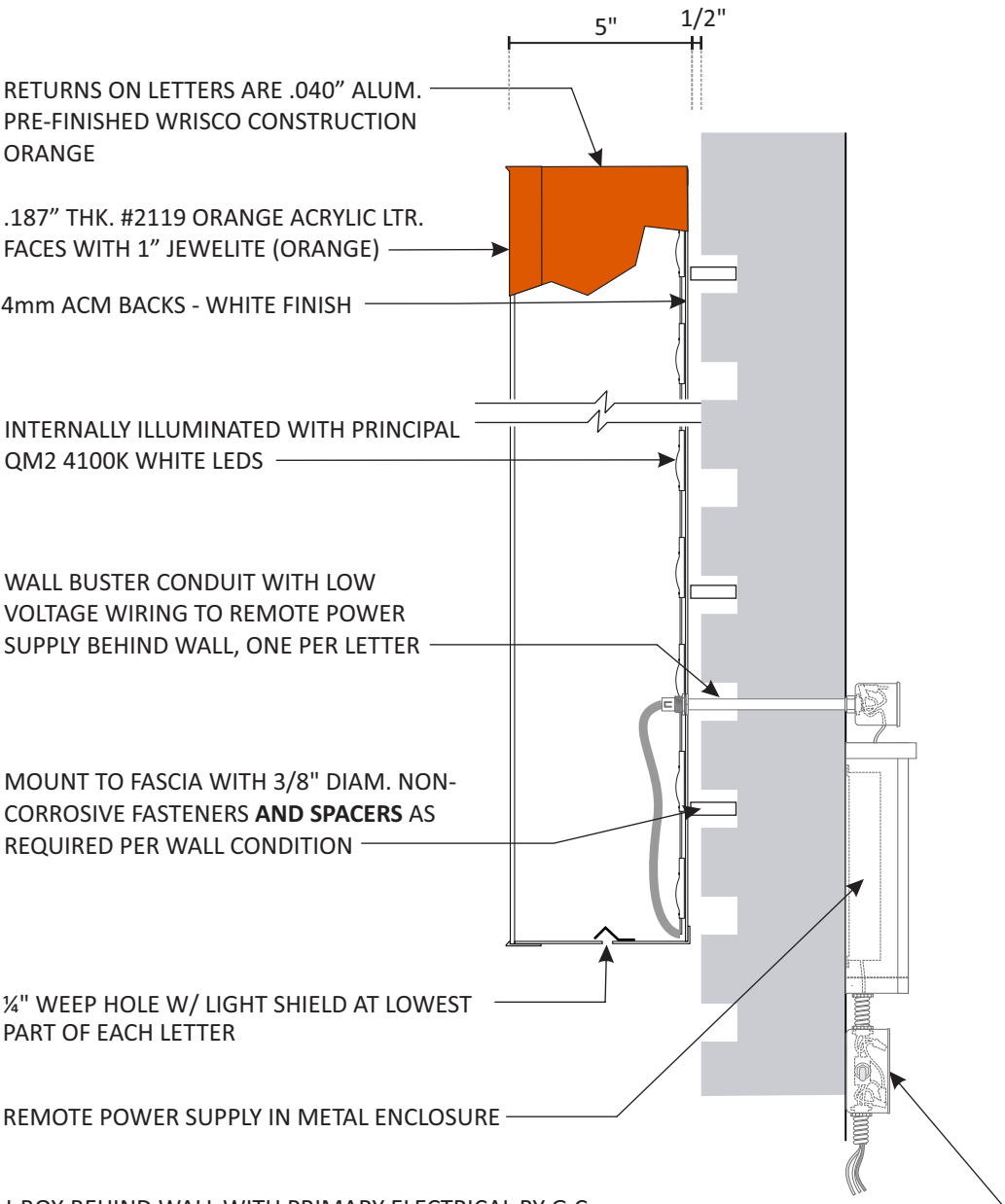


2014 / 2017 NEC COMPLIANT SWITCH / LABEL

METAL PANEL WALL PARAPET

SCALE: 3/4" = 1'-0"

RACEWAYS ARE NOT PERMITTED PER CITY CODE.



J-BOX BEHIND WALL WITH PRIMARY ELECTRICAL BY G.C.

LETTER SECTION

N.T.S.

**INSTALLATION NOTE:** VERIFY ACCESS BEHIND WALL FOR LOCATION OF REMOTE POWER SUPPLY FOR INSTALL AND FUTURE SERVICE.



Design #

0626447AR7

Sheet 3 of 9

Client

#

Address

SWC Douglas St - St Lukes Blvd,  
Lee's Summit, MO

Acct. Rep. DEBBIE MOLTZ  
Coordinator LAUREN STACKHOUSE

Designer IH

Date 8/6/20

Approval / Date

Client

Sales

Estimating

Art

Engineering

Landlord

Revision/Date

R1(8-7-20)IH: Delete raceways from channel letters. (not allowed by City)  
R2(1-11-21)IH: Change orange LEDs to white. Update package.  
R3(1-13-21)IH: Update site plan & elevations per latest set of plans. Ensure plan for placement of menuboards is shown accurately.  
R4(02-12-21)TQ: Moved monument sign back behind the 20' building setback line.  
R5(3-4-21)IH: The directions (N, E, S, W) on elevations didn't match site plan. Customer provided corrected elevations. Please update the directions on the elevations in our sign package so that they now match the site plan.  
R6(3-19-21)IH: Delete int MB  
R7(4-14-21)IH: Change sign E to a routed cabinet. The white stripes in the logo can be acrylic but the main white background cannot light. Show night view



chandler signs.com

National Headquarters 14201 Sovereign Road #101  
Fort Worth, TX 76155  
(214) 902-2000 Fax (214) 902-2044

San Antonio 17319 San Pedro Ave  
Ste 200  
San Antonio, TX 78232  
(210) 349-3804 Fax (210) 349-8724

West Coast 3220 Executive Ridge Dr  
Ste 250  
Vista, CA 92081  
(760) 734-1708 Fax (760) 734-3752

Northeast US 2301 River Road  
Suite 201  
Louisville, KY 40206  
(502) 897-9800 Cell (502) 554-2575

Florida 2584 Sand Hill Point Circle  
Davenport, FL 33837  
(863) 426-1100 Fax (863) 424-1160

Georgia 111 Woodstone Place  
Dawsonville, GA 30534  
(678) 725-8852 Fax (210) 349-8724

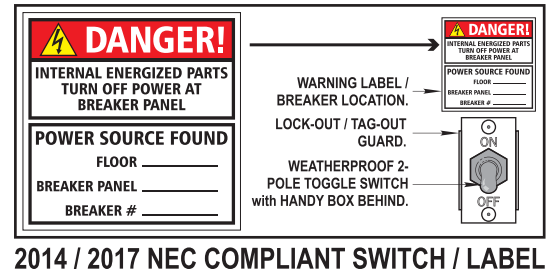
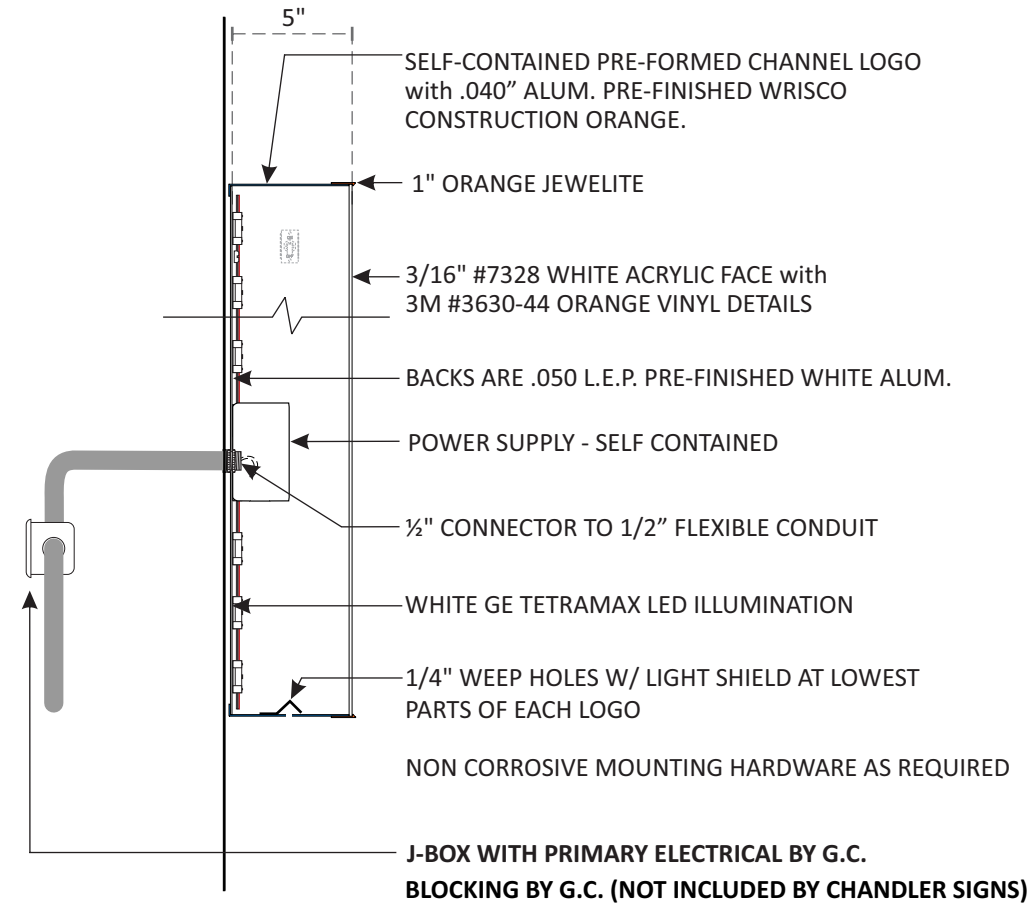
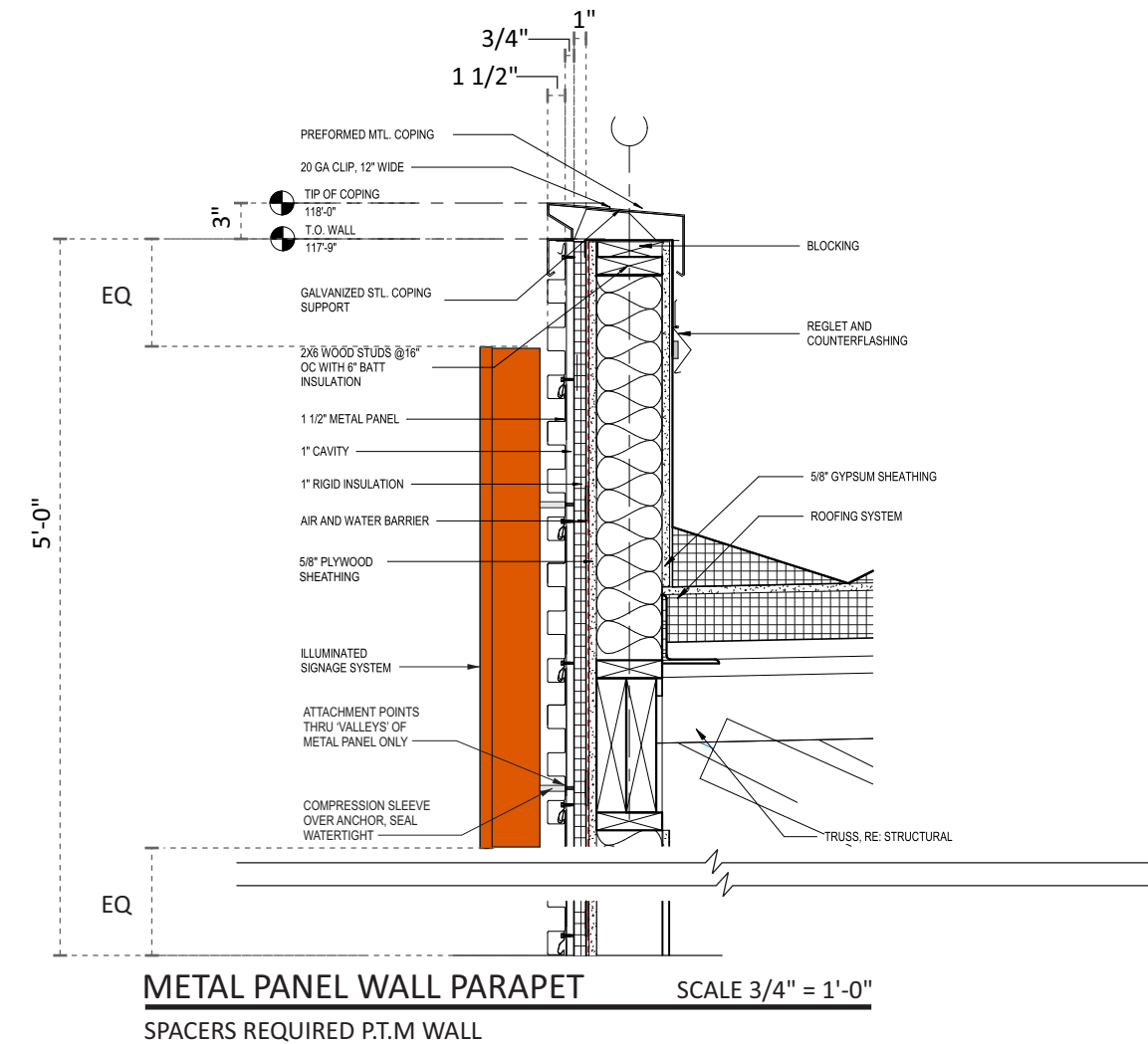
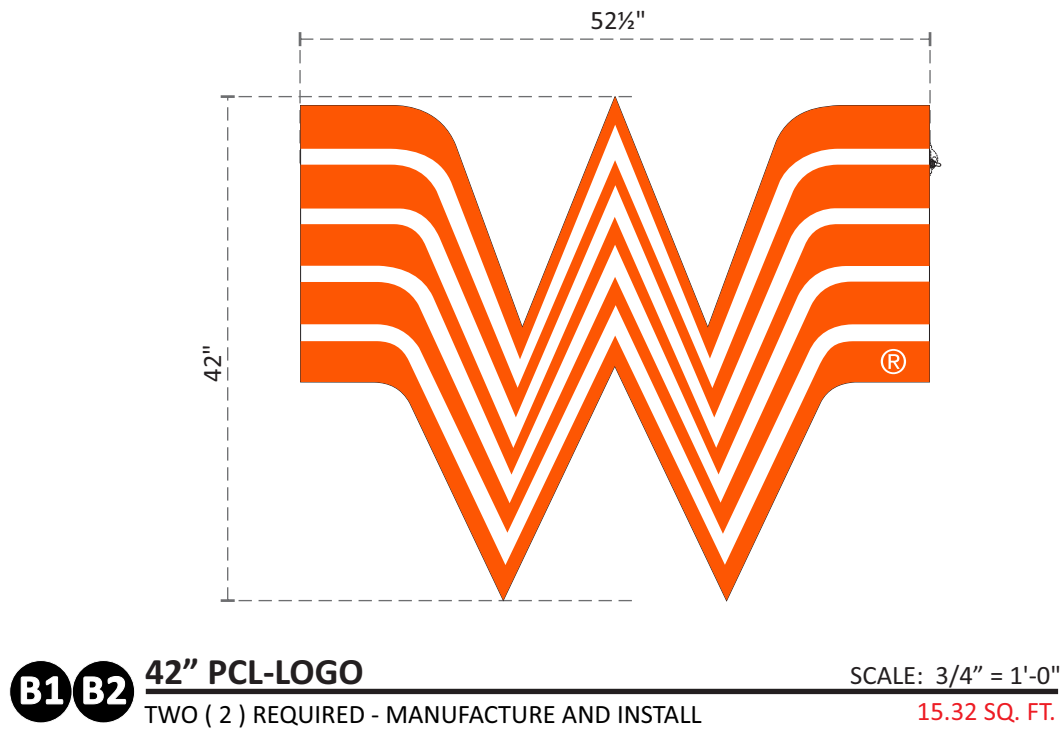
South Texas PO BOX 125 206 Doral Drive  
Portland, TX 78374  
(961) 563-5599 Fax (361) 643-6533


This drawing is the property of  
Chandler Signs, LLC  
All rights to its use for reproduction  
are reserved by Chandler Signs, LLC

**FINAL ELECTRICAL  
CONNECTION BY  
CUSTOMER**

THIS SIGN IS INTENDED TO BE INSTALLED  
IN ACCORDANCE WITH ARTICLE 600 OF THE  
NATIONAL ELECTRICAL CODE AND/OR OTHER  
APPLICABLE LOCAL CODES. THIS INCLUDES  
PROPER GROUNDING & BONDING OF THE SIGN.  
SIGN WILL BEAR UL LABEL(S).







Design #

0626447AR7

Sheet

4 of 9

Client

#

Address

SWC Douglas St - St Lukes Blvd,  
Lee 's Summit, MO

Acct. Rep.

DEBBIE MOLTZ

Coordinator

LAUREN STACKHOUSE

Designer

IH

Date

8/6/20

Approval / Date

Client

Sales

Estimating

Art

Engineering

Landlord

Revision/Date

R1(8-7-20)IH: Delete raceways from channel letters. (not allowed by City)

R2(1-11-21)IH: Change orange LEDs to white. Update package.


R3(1-13-21)IH: Update site plan & elevations per latest set of plans. Ensure plan for placement of menuboards is shown accurately.

R4(02-12-21)TQ: Moved monument sign back behind the 20' building setback line.

R5(3-4-21)IH: The directions (N, E, S, W) on elevations didn't match site plan. Customer provided corrected elevations. Please update the directions on the elevations in our sign package so that they now match the site plan

R6(3-19-21)IH: Delete int MB

R7(4-14-21)IH: Change sign E to a routed cabinet. The white stripes in the logo can be acrylic but the main white background cannot light. Show night view

CHANDLER  
SIGNS

chandlersigns.com

National Headquarters

14201 Sovereign Road #101  
Fort Worth, TX 76155  
(214) 902-2000 Fax (214) 902-2044

San Antonio

17319 San Pedro Ave  
Ste 200  
San Antonio, TX 78232  
(210) 349-3804 Fax (210) 349-8724

West Coast

3220 Executive Ridge Dr  
Ste 250  
Vista, CA 92081  
(760) 734-1708 Fax (760) 734-3752

Northeast US

2301 River Road  
Suite 201  
Louisville, KY 40206  
(502) 897-9800 Cell (502) 554-2575

Florida

2584 Sand Hill Point Circle  
Davenport, FL 33837  
(863) 426-1100 Fax (863) 424-1160

Georgia

111 Woodstone Place  
Dawsonville, GA 30534  
(678) 725-8852 Fax (210) 349-8724

South Texas

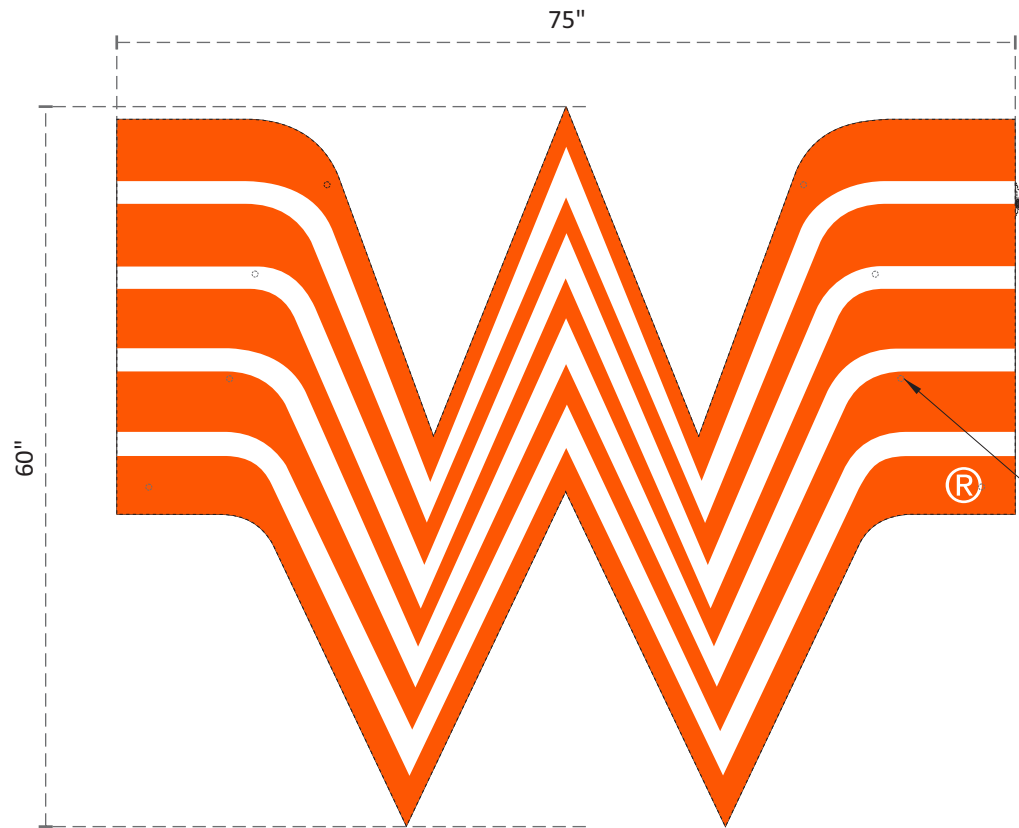
PO BOX 125 206 Doral Drive  
Portland, TX 78374  
(961) 563-5599 Fax (361) 643-6533

This drawing is the property of  
Chandler Signs, LLC  
All rights to its use for reproduction  
are reserved by Chandler Signs, LLC

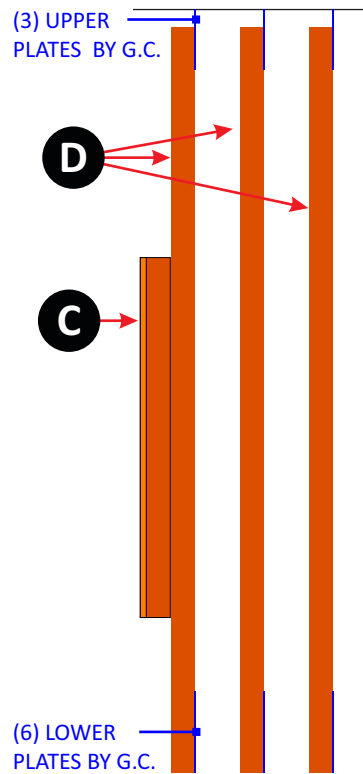
FINAL ELECTRICAL  
CONNECTION BY  
CUSTOMER

THIS SIGN IS INTENDED TO BE INSTALLED  
IN ACCORDANCE WITH ARTICLE 600 OF THE  
NATIONAL ELECTRICAL CODE AND/OR OTHER  
APPLICABLE LOCAL CODES. THIS INCLUDES  
PROPER GROUNDING & BONDING OF THE SIGN.  
SIGN WILL BEAR UL LABEL(S).

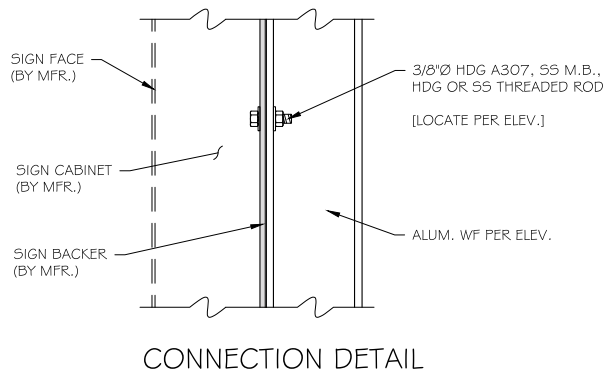




**C 60" PCL-LOGO** SCALE: 3/4" = 1'-0"  
ONE ( 1 ) REQUIRED - MANUFACTURE AND INSTALL 31.25 SQ. FT.



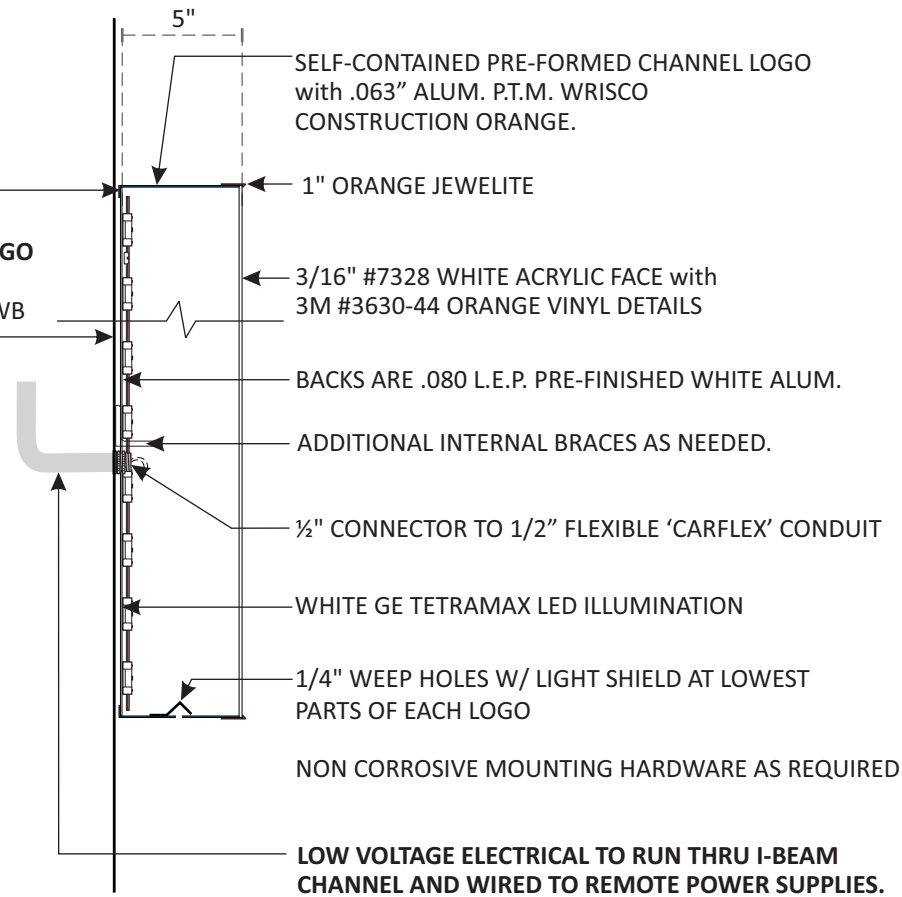
**C END VIEW** SCALE 3/8" = 1'-0"  
LOGO INSTALLED ABOVE ENTRY DOOR



**NO STAPLED BACKS.** VISIBLE BY WB PATRONS EXITING THE STORE.

**PAINT BACK OF CHANNEL LETTER/LOGO** TO MATCH WRISCO CONSTRUCTION ORANGE. BACK OF LOGO VISIBLE BY WB PATRONS EXITING THE STORE.

(8) MOUNTING HOLES. PAINT BOLTS TO MATCH ORANGE. MIN. QTY SHOWN, INSTALLER CAN ADD MORE.



## LETTER SECTION

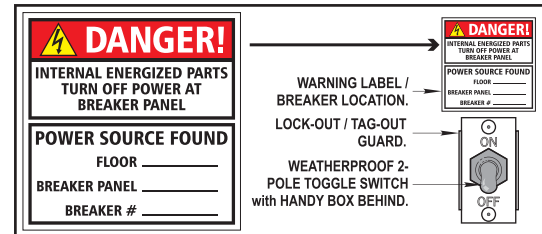
REMOTE POWER SUPPLY

### PRIMARY ELECTRICAL BY G.C. (NOT INCLUDED BY CHANDLER SIGNS)

**NOTE: REMOTE POWER SUPPLY.** LOW VOLTAGE LEAD GOING BACK TO DESIGNATED AREA BEHIND THE WALL WITHIN 40FT OF THE SIGN OR ABOVE THE ROOF LINE. THE DESIGNATED AREA TO BE ACCESSIBLE FOR FUTURE SERVICE AND TO BE IDENTIFIED BY THE ARCHITECT. PRIMARY ELECTRICAL BY THE GC SHOULD BE LOCATED IN THIS AREA. GEN. CONTRACTOR TO PROVIDE THREE (3) PROVIDE CONDUITS FROM DESIGNATED AREA TO AREA BEHIND UPPER ATTACHMENT PLATES.

**NOTE: SHIP TOUCH-UP PAINT** COLOR TO MATCH BACKGROUND WALL WITH SIGN. ALL BOLTS ON RACEWAY TO BE PAINTED TO MATCH AFTER SIGN IS INSTALLED.

**NOTE: LOCATION OF PRIMARY ELECTRICAL** WITHIN THE BUILDING (AND LOCATION OF REMOTE POWERS SUPPLIES) TO BE IDENTIFIED BY THE ARCHITECT.



2014 / 2017 NEC COMPLIANT SWITCH / LABEL



### Design #

0626447AR7

### Sheet

5 of 9

### Client

#

### Address

SWC Douglas St - St Lukes Blvd,  
Lee 's Summit, MO

Acct. Rep. DEBBIE MOLTZ  
Coordinator LAUREN STACKHOUSE

Designer IH

Date 8/6/20

### Approval / Date

Client	
Sales	
Estimating	
Art	
Engineering	
Landlord	

### Revision/Date

R1(8-7-20)IH: Delete raceways from channel letters. (not allowed by City)  
R2(1-11-21)H:Change orange LEDs to white. Update package.  
R3(1-13-21)H: Update site plan & elevations per latest set of plans. Ensure plan for placement of menuboards is shown accurately.  
R4(02-12-21)TQ: Moved monument sign back behind the 20' building setback line.  
R5(3-4-21)H: The directions (N, E, S, W) on elevations didn't match site plan. Customer provided corrected elevations. Please update the directions on the elevations in our sign package so that they now match the site plan  
R6(3-19-21)H: Delete int MB  
R7(4-14-21)H: Change sign E to a routed cabinet. The white stripes in the logo can be acrylic but the main white background cannot light. Show night view



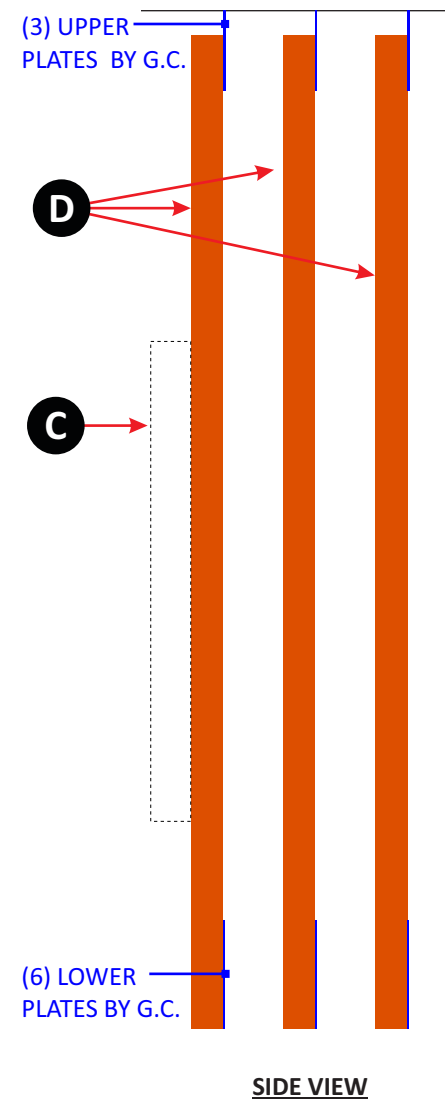
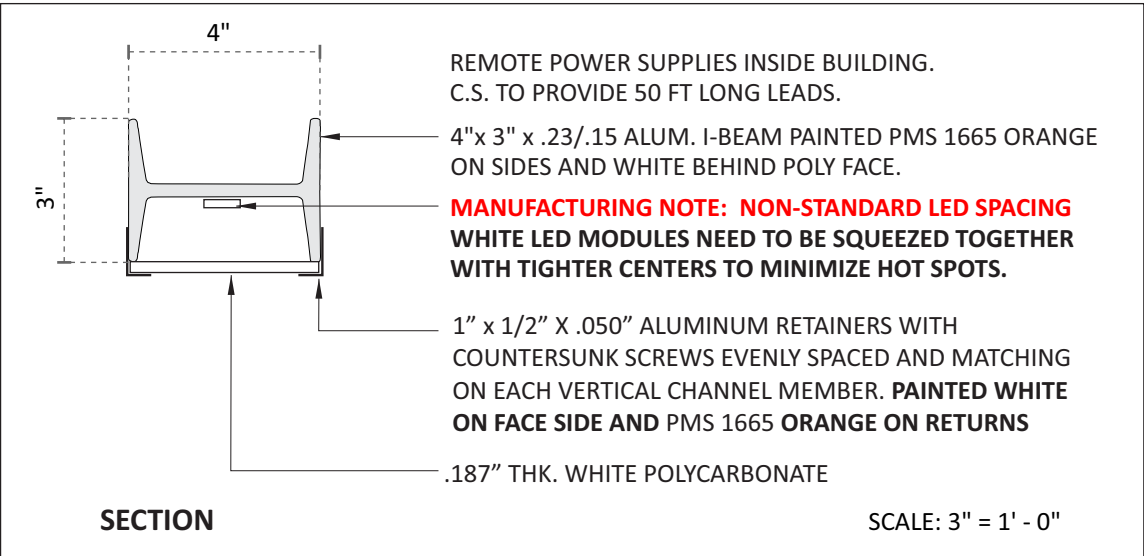
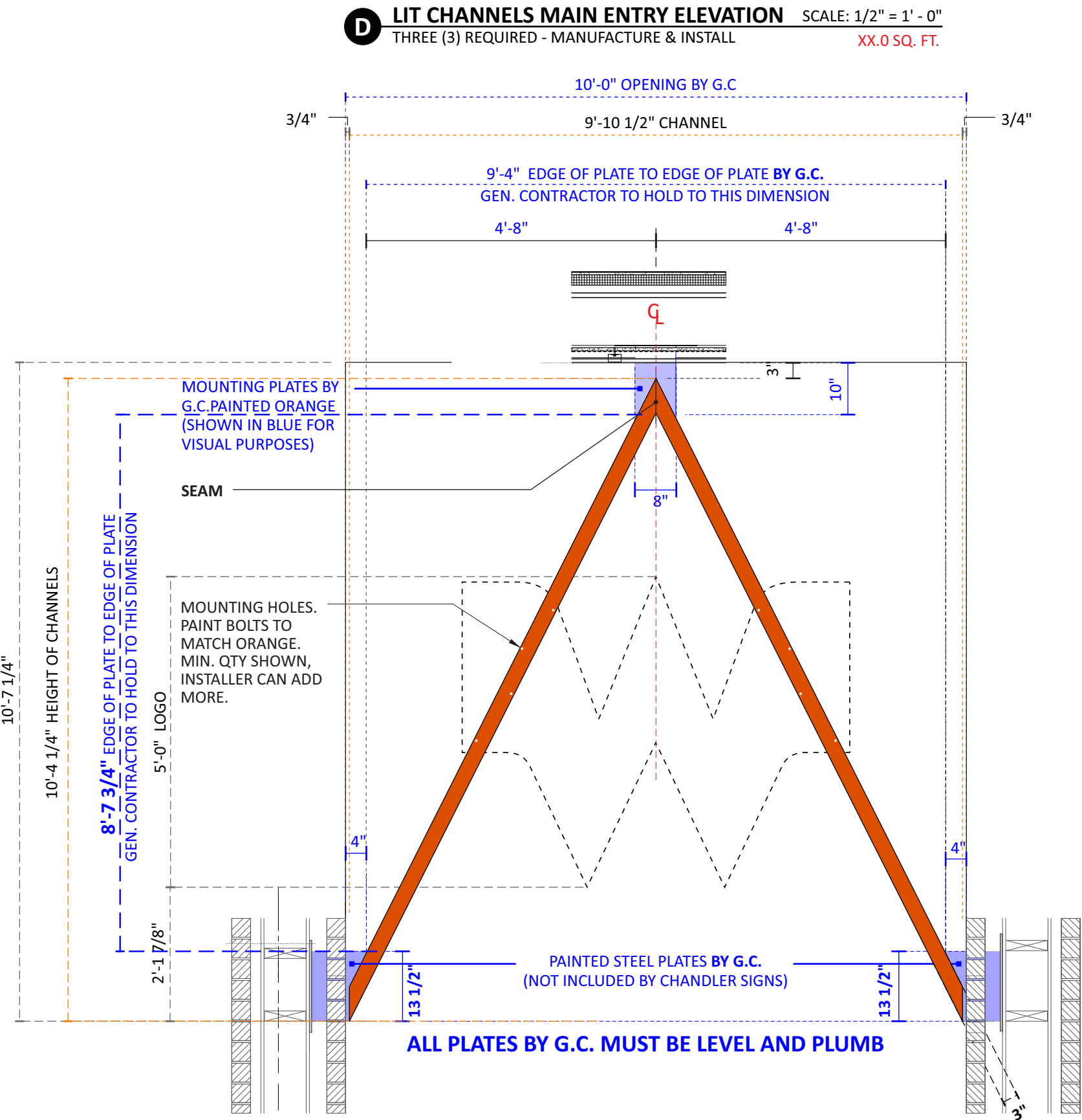
chandler signs.com

National Headquarters	14201 Sovereign Road #101 Fort Worth, TX 76155 (214) 902-2000 Fax (214) 902-2044
San Antonio	17319 San Pedro Ave Ste 200 San Antonio, TX 78232 (210) 349-3804 Fax (210) 349-8724
West Coast	3220 Executive Ridge Dr Ste 250 Vista, CA 92081 (760) 734-1708 Fax (760) 734-3752
Northeast US	2301 River Road Suite 201 Louisville, KY 40206 (502) 897-9800 Cell (502) 554-2575
Florida	2584 Sand Hill Point Circle Davenport, FL 33837 (863) 426-1100 Fax (863) 424-1160
Georgia	111 Woodstone Place Dawsonville, GA 30534 (678) 725-8852 Fax (210) 349-8724
South Texas	PO BOX 125 206 Doral Drive Portland, TX 78374 (961) 563-5999 Fax (361) 643-6533

This drawing is the property of  
Chandler Signs, LLC  
All rights to its use for reproduction  
are reserved by Chandler Signs, LLC

**FINAL ELECTRICAL  
CONNECTION BY  
CUSTOMER**

THIS SIGN IS INTENDED TO BE INSTALLED  
IN ACCORDANCE WITH ARTICLE 600 OF THE  
NATIONAL ELECTRICAL CODE AND/OR OTHER  
APPLICABLE LOCAL CODES. THIS INCLUDES  
PROPER GROUNDING & BONDING OF THE SIGN.  
SIGN WILL BEAR UL LABEL(S).



Design #	
0626447AR7	
Sheet	6 of 9
Client	
#	
Address	
SWC Douglas St - St Lukes Blvd, Lee's Summit, MO	
Acct. Rep. Coordinator	DEBBIE MOLTZ LAUREN STACKHOUSE
Designer	IH
Date	8/6/20
Approval / Date	
Client	
Sales	
Estimating	
Art	
Engineering	
Landlord	
Revision/Date	
R1(8-7-20)IH: Delete raceways from channel letters. (not allowed by City)	
R2(1-11-21)IH: Change orange LEDs to white. Update package.	
R3(1-13-21)IH: Update site plan & elevations per latest set of plans. Ensure plan for placement of menuboards is shown accurately.	
R4(02-12-21)TQ: Moved monument sign back behind the 20' building setback line.	
R5(3-4-21)IH: The directions (N, E, S, W) on elevations didn't match site plan. Customer provided corrected elevations. Please update the directions on the elevations in our sign package so that they now match the site plan	
R6(3-19-21)IH: Delete int MB	
R7(4-14-21)IH: Change sign E to a routed cabinet. The white stripes in the logo can be acrylic but the main white background cannot light. Show night view	

CHANDLER SIGNS	
chandler signs.com	
National Headquarters	14201 Sovereign Road #101 Fort Worth, TX 76155 (214) 902-2000 Fax (214) 902-2044
San Antonio	17319 San Pedro Ave Ste 200 San Antonio, TX 78232 (210) 349-3804 Fax (210) 349-8724
West Coast	3220 Executive Ridge Dr Ste 250 Vista, CA 92081 (760) 734-1708 Fax (760) 734-3752
Northeast US	2301 River Road Suite 201 Louisville, KY 40206 (502) 897-9800 Cell (502) 554-2575
Florida	2584 Sand Hill Point Circle Davenport, FL 33837 (863) 426-1100 Fax (863) 424-1160
Georgia	111 Woodstone Place Dawsonville, GA 30534 (678) 725-8852 Fax (210) 349-8724
South Texas	PO BOX 125 206 Doral Drive Portland, TX 78374 (961) 563-5999 Fax (361) 643-6533

This drawing is the property of Chandler Signs, LLC. All rights to its use for reproduction are reserved by Chandler Signs, LLC.

**FINAL ELECTRICAL CONNECTION BY CUSTOMER**

THIS SIGN IS INTENDED TO BE INSTALLED IN ACCORDANCE WITH ARTICLE 600 OF THE NATIONAL ELECTRICAL CODE AND/OR OTHER APPLICABLE LOCAL CODES. THIS INCLUDES PROPER GROUNDING & BONDING OF THE SIGN. SIGN WILL BEAR UL LABEL(S).





Design #

0626447AR7

Sheet 7 of 9

Client

#

Address

SWC Douglas St - St Lukes Blvd,  
Lee's Summit, MO

Acct. Rep. DEBBIE MOLTZ  
Coordinator LAUREN STACKHOUSE

Designer IH

Date 8/6/20

Approval / Date

Client

Sales

Estimating

Art

Engineering

Landlord

Revision/Date

R1(8-7-20)IH: Delete raceways from channel letters.  
(not allowed by City)

R2(1-11-21)IH: Change orange LEDs to white. Update  
package.

R3(1-13-21)IH: Update site plan & elevations per latest  
set of plans. Ensure plan for placement of menuboards  
is shown accurately.

R4(02-12-21)TQ: Moved monument sign back behind  
the 20' building setback line.

R5(3-4-21)IH: The directions (N, E, S, W) on elevations  
didn't match site plan. Customer provided corrected  
elevations. Please update the directions on the  
elevations in our sign package so that they now match  
the site plan

R6(3-19-21)IH: Delete int MB

R7(4-14-21)H: Change sign E to a routed cabinet. The  
white stripes in the logo can be acrylic but the main  
white background cannot light. Show night view



chandler signs.com

National Headquarters 14201 Sovereign Road #101  
Fort Worth, TX 76155  
(214) 902-2000 Fax (214) 902-2044

San Antonio 17319 San Pedro Ave  
Ste 200  
San Antonio, TX 78232  
(210) 349-3804 Fax (210) 349-8724

West Coast 3220 Executive Ridge Dr  
Ste 250  
Vista, CA 92081  
(760) 734-1708 Fax (760) 734-3752

Northeast US 2301 River Road  
Suite 201  
Louisville, KY 40206  
(502) 897-9800 Cell (502) 554-2575

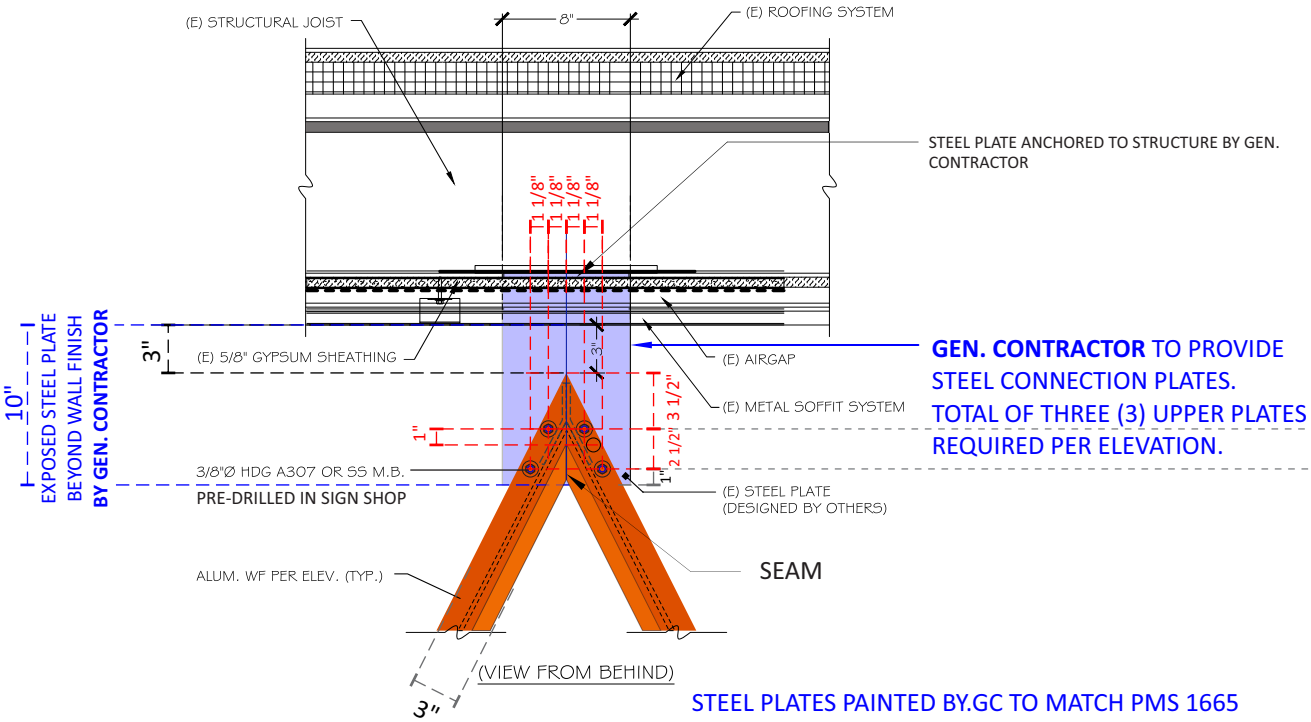
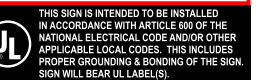
Florida 2584 Sand Hill Point Circle  
Davenport, FL 33837  
(863) 426-1100 Fax (863) 424-1160

Georgia 111 Woodstone Place  
Dawsonville, GA 30534  
(678) 725-8852 Fax (210) 349-8724

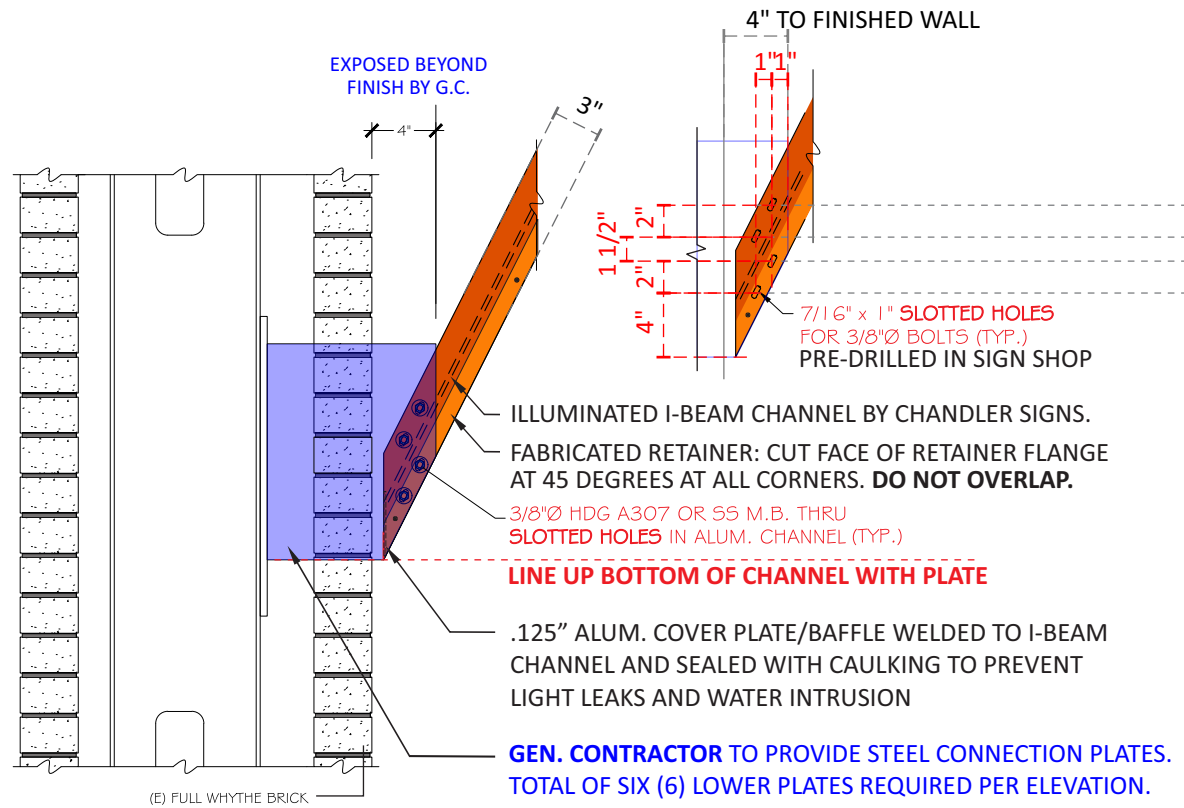
South Texas PO BOX 125 206 Doral Drive  
Portland, TX 78374  
(961) 563-5599 Fax (361) 643-6533

This drawing is the property of  
Chandler Signs, LLC  
All rights to its use for reproduction  
are reserved by Chandler Signs, LLC

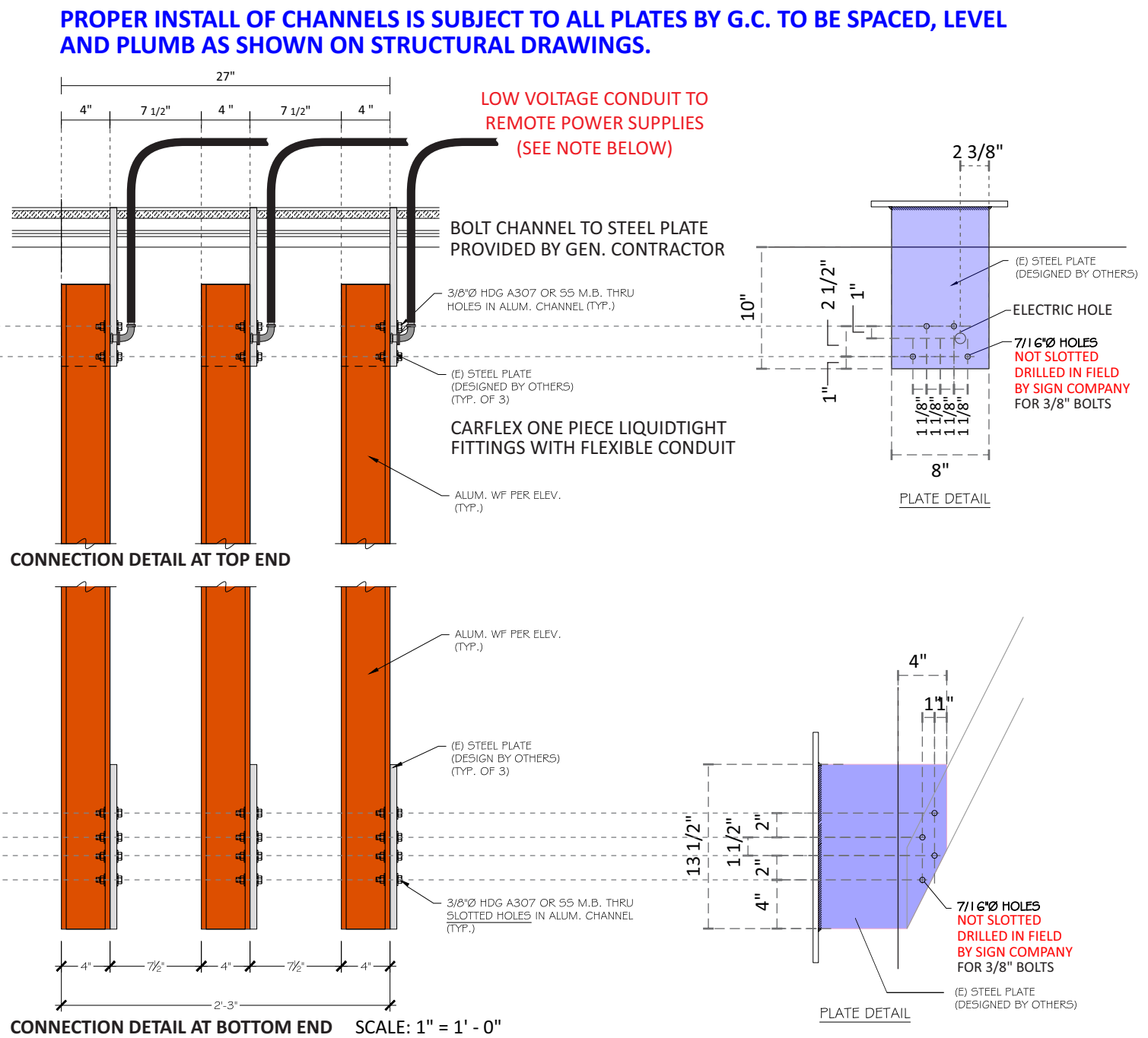
FINAL ELECTRICAL  
CONNECTION BY  
CUSTOMER



SCALE: 1" = 1' - 0"  
WALL SECTION DETAIL AT ENTRY - TOP



SCALE: 1" = 1' - 0"  
WALL SECTION DETAIL AT ENTRY - BOTTOM



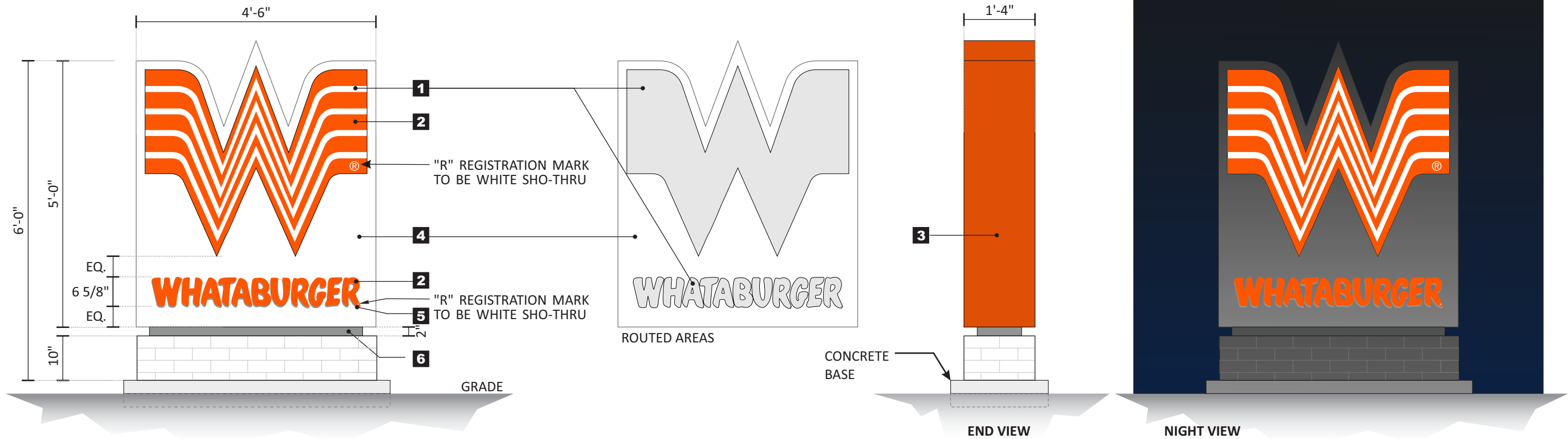
#### PRE-WIRING NOTE:

GEN. CONTRACTOR TO PROVIDE THREE (3) CARFLEX CONDUIT WHIPS FOR LOW VOLTAGE WIRING TO DESIGNATED AREA BEHIND THE WALL AND WITHIN 40FT OF THE SIGN OR TO AREA ABOVE THE ROOF LINE. ELECTRICAL CONTRACTOR TO PROVIDE PULL STRINGS THRU EACH CONDUIT TO UPPER PLATES. THE DESIGNATED AREA TO BE ACCESSIBLE FOR INSTALL OF POWER SUPPLIES AND FUTURE SERVICE, AND TO BE IDENTIFIED BY THE ARCHITECT. PRIMARY ELECTRICAL BY THE GC SHOULD BE LOCATED IN THIS AREA. CONDUIT WHIPS TO BE ATTACHED BEHIND UPPER ATTACHMENT PLATES.

#### IMPORTANT NOTE FOR WHATABURGER'S GENERAL CONTRACTOR:

THE 9 STEEL PLATES PROVIDED BY GENERAL CONTRACTOR DESIGNED TO SUPPORT THE LED CHANNELS SUPPLIED AND INSTALLED BY THE SIGN VENDOR MUST BE INSTALLED IN THE EXACT PLACEMENT SHOWN ON THE STRUCTURAL DRAWINGS. THE PLATES MUST BE EQUALLY SPACED, LEVEL, & PLUMB IN ORDER FOR THE FINAL APPEARANCE OF THE INSTALLED LED CHANNELS TO APPEAR PERFECTLY PARALLEL AND SYMMETRICAL AS PER THE DESIGN INTENT. THIS PLATE PLACEMENT WILL BE CRITICAL IN AVOIDING ANY REALIGNMENT CHALLENGES DURING INSTALLATION CAUSING ADDITIONAL LABOR AND/OR TRIPS TO THE JOBSITE FOR FINAL FIELD ADJUSTMENTS.





**E D/F ROUTED OUT MONUMENT** SCALE: 1/2"=1'-0"

ONE ( 1 ) REQUIRED - MANUFACTURE AND INSTALL 22.50 SQ. FT. CABINET ONLY

D/F PAINTED R.O.S.T. ALUM. CABINET  
BACKED WITH WHITE ACRYLIC FACES WITH APPLIED  
1ST SURFACE 3M VINYL GRAPHICS.

INTERNALLY ILLUMINATED WITH WHITE L.E.D.  
DISPLAY TO HAVE ON/OFF SERVICE SWITCHES

PAINTED 2" ALUM. REVEAL

ONE STEEL SUPPORT WITH CONCRETE PIER

CONCRETE PAD AND MASONRY INCLUDING CMU CORE BY G.C. – NO FRAME REQ'D  
STONE VENEER TO MATCH BUILDING STONE.

U.L. LABELS REQUIRED. LABELS TO BE ATTACHED IN VISIBLE  
AREA, DIRECTLY BELOW ON/OFF SWITCH  
2.5 TOTAL AMPS (1) 120v, 20a CIRCUIT REQ'D

NOTE: STEEL AND FOUNDATION FOR SIGN TO BE DETERMINED BASED ON SITE SPECIFIC BASIS, LOCAL SOIL CONDITIONS AND WIND LOAD REQUIREMENTS.

COLOR SCHEDULE	
1	3/16" WHITE SG ACRYLIC FACES
2	3M 3630-44 ORANGE VINYL
3	P.T.M. P.M.S. 1665C ORANGE.
4	SPRAYLAT MARK 1: SM-102S SATIN WHITE
5	3M 3630-51 SILVER GRAY VINYL
6	P.T.M. P.M.S. 430 GRAY



Design #

0626447AR7

Sheet

8 of 9

Client

#

Address

SWC Douglas St - St Lukes Blvd,  
Lee 's Summit, MO

Acct. Rep.  
Coordinator

DEBBIE MOLTZ  
LAUREN STACKHOUSE

Designer

IH

Date

8/6/20

Approval / Date

Client

Sales

Estimating

Art

Engineering

Landlord

Revision/Date

R1(8-7-20)IH: Delete raceways from channel letters.  
(not allowed by City)  
R2(1-11-21)IH: Change orange LEDs to white. Update  
package.  
R3(1-13-21)IH: Update site plan & elevations per latest  
set of plans. Ensure plan for placement of menuboards  
is shown accurately.  
R4(02-12-21)TO: Moved monument sign back behind  
the 20' building setback line.  
R5(3-4-21)IH: The directions (N, E, S, W) on elevations  
didn't match site plan. Customer provided corrected  
elevations. Please update the directions on the  
elevations in our sign package so that they now match  
the site plan  
R6(3-19-21)IH: Delete int MB  
R7(4-14-21)IH: Change sign E to a routed cabinet. The  
white stripes in the logo can be acrylic but the main  
white background cannot light. Show night view

chandler signs

chandler signs.com

National Headquarters

14201 Sovereign Road #101  
Fort Worth, TX 76155  
(214) 902-2000 Fax (214) 902-2044

San Antonio

17319 San Pedro Ave  
Ste 200  
San Antonio, TX 78232  
(210) 349-3804 Fax (210) 349-8724

West Coast

3220 Executive Ridge Dr  
Ste 250  
Vista, CA 92081  
(760) 794-1708 Fax (760) 734-3752

Northeast US

2301 River Road  
Suite 201  
Louisville, KY 40206  
(502) 897-9800 Cell (502) 554-2575

Florida

2584 Sand Hill Point Circle  
Davenport, FL 33837  
(863) 426-1100 Fax (863) 424-1160

Georgia

111 Woodstone Place  
Dawsonville, GA 30534  
(678) 725-8852 Fax (210) 349-8724

South Texas

PO BOX 125 206 Doral Drive  
Portland, TX 78374  
(961) 563-5999 Fax (361) 643-6533

This drawing is the property of  
Chandler Signs, LLC  
All rights to its use for reproduction  
are reserved by Chandler Signs, LLC

FINAL ELECTRICAL  
CONNECTION BY  
CUSTOMER

THIS SIGN IS INTENDED TO BE INSTALLED  
IN ACCORDANCE WITH ARTICLE 600 OF THE  
NATIONAL ELECTRICAL CODE AND/OR OTHER  
APPLICABLE LOCAL CODES. THIS INCLUDES  
PROPER GROUNDING & BONDING OF THE SIGN.  
SIGN WILL BEAR UL LABEL(S).



Design #

0626447AR7

Sheet 9 of 9

Client

#

Address

SWC Douglas St - St Lukes Blvd,  
Lee 's Summit, MO

Acct. Rep. DEBBIE MOLTZ  
Coordinator LAUREN STACKHOUSE

Designer IH

Date 8/6/20

Approval / Date

Client	
Sales	
Estimating	
Art	
Engineering	
Landlord	

Revision/Date

R1(8-7-20)IH: Delete raceways from channel letters. (not allowed by City)  
R2(1-11-21)IH: Change orange LEDs to white. Update package.  
R3(1-13-21)IH: Update site plan & elevations per latest set of plans. Ensure plan for placement of menuboards is shown accurately.  
R4(02-12-21)TQ: Moved monument sign back behind the 20' building setback line.  
R5(3-4-21)IH: The directions (N, E, S, W) on elevations didn't match site plan. Customer provided corrected elevations. Please update the directions on the elevations in our sign package so that they now match the site plan  
R6(3-19-21)IH: Delete int MB  
R7(4-14-21)H: Change sign E to a routed cabinet. The white stripes in the logo can be acrylic but the main white background cannot light. Show night view



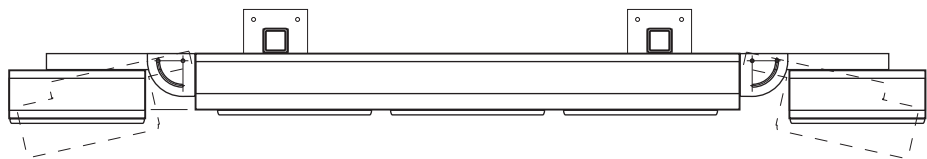
chandlersigns.com

National Headquarters	14201 Sovereign Road #101 Fort Worth, TX 76155 (214) 902-2000 Fax (214) 902-2044
San Antonio	17319 San Pedro Ave Ste 200 San Antonio, TX 78232 (210) 349-3804 Fax (210) 349-8724
West Coast	3220 Executive Ridge Dr Ste 250 Vista, CA 92081 (760) 734-1708 Fax (760) 734-3752
Northeast US	2301 River Road Suite 201 Louisville, KY 40206 (502) 897-9800 Cell (502) 554-2575
Florida	2584 Sand Hill Point Circle Davenport, FL 33837 (863) 426-1100 Fax (863) 424-1160
Georgia	111 Woodstone Place Dawsonville, GA 30534 (678) 725-8852 Fax (210) 349-8724
South Texas	PO BOX 125 206 Doral Drive Portland, TX 78374 (961) 563-5999 Fax (361) 643-6533

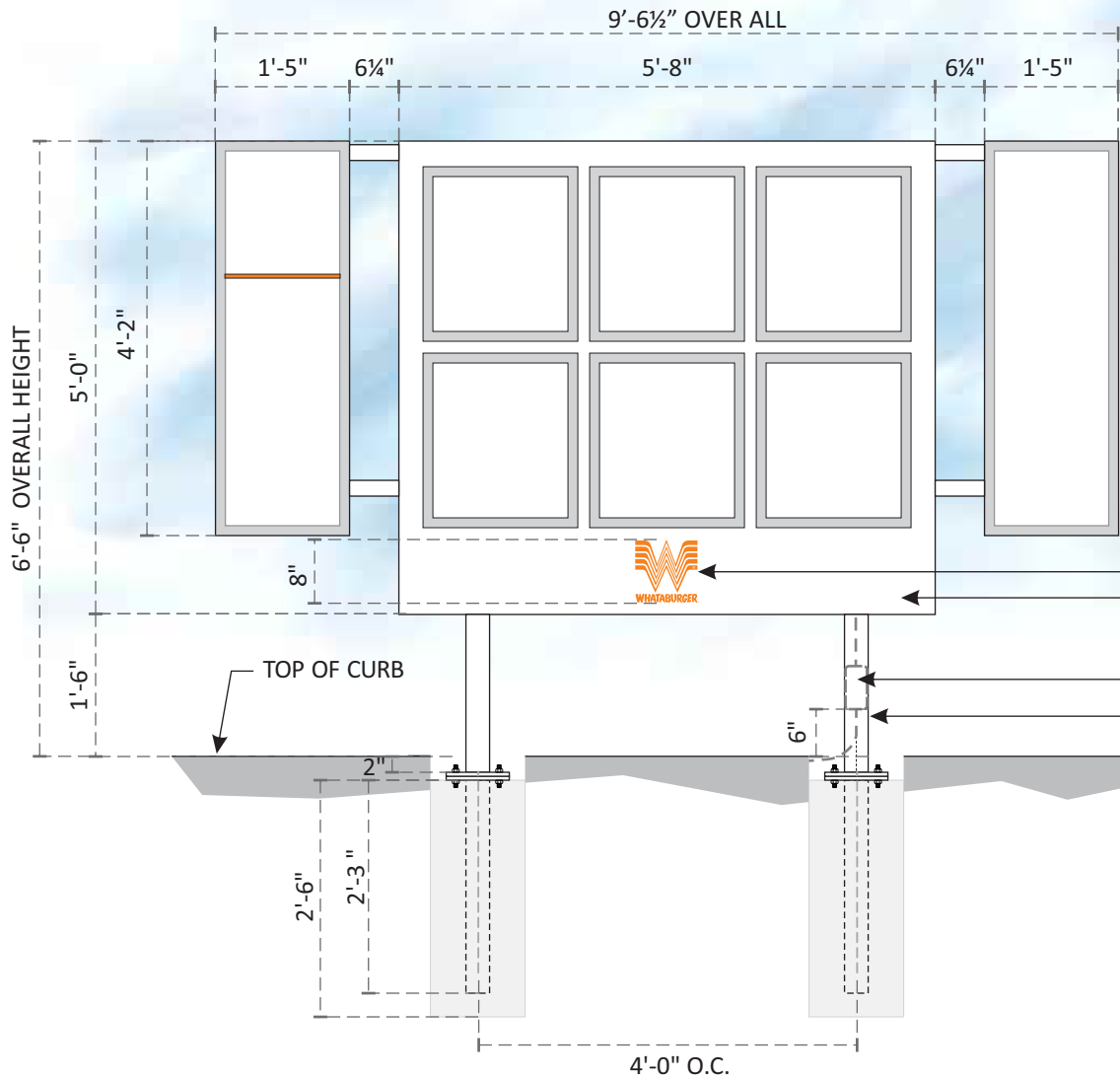
This drawing is the property of  
Chandler Signs, LLC  
All rights to its use for reproduction  
are reserved by Chandler Signs, LLC

FINAL ELECTRICAL  
CONNECTION BY  
CUSTOMER

THIS SIGN IS INTENDED TO BE INSTALLED  
IN ACCORDANCE WITH ARTICLE 600 OF THE  
NATIONAL ELECTRICAL CODE AND/OR OTHER  
APPLICABLE LOCAL CODES. THIS INCLUDES  
PROPER GROUNDING & BONDING OF THE SIGN.  
SIGN WILL BEAR UL LABEL(S).



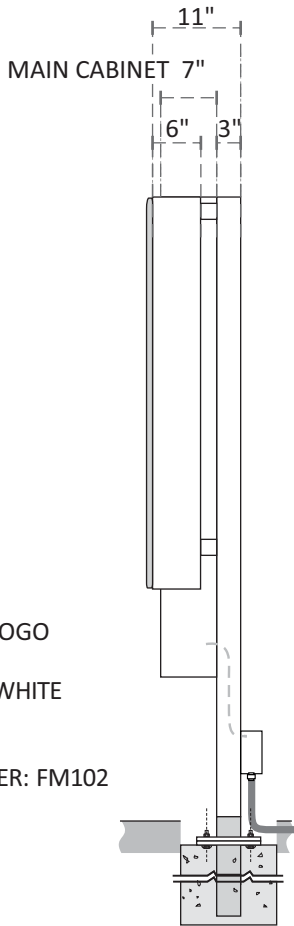
TOP VIEW



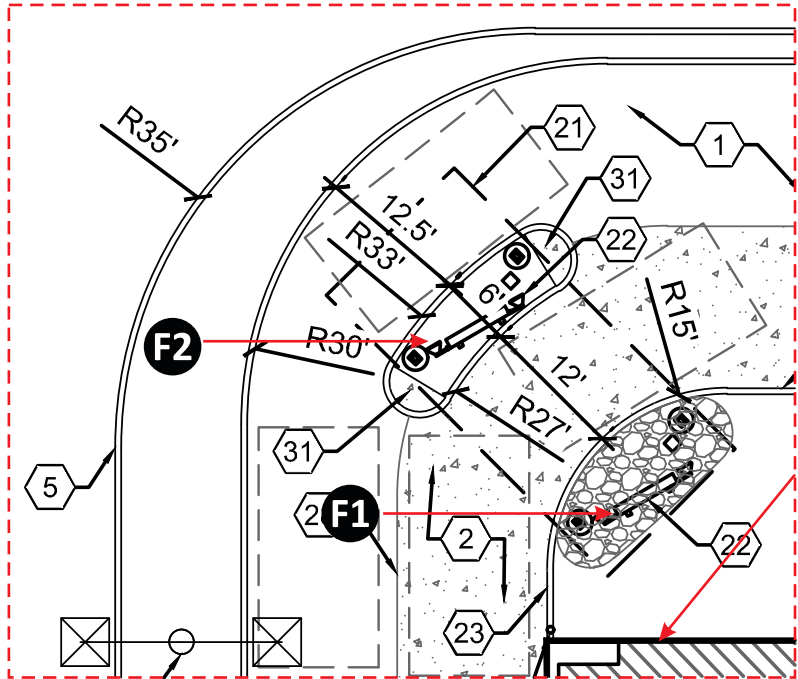
3M #3630-44 ORANGE VINYL COPY & LOGO  
ALUMINUM CABINET & FACE,  
P.T.M. SPRAYLAT MARK 1: SM-102S SATIN WHITE  
• INT. ILLUM. WHITE L.E.D.  
J- BOX BY G.C. ON BACK OF SUPPORT  
3"x3"x3/16" SUPPORTS P.T.M. FIELD MASTER: FM102  
WHITE SATIN

(2) 3"x 3"x 3/16" SQ. STL. TUBE SUPPORTS EACH  
IN TWO SECTIONS w/ MATCH PLATE @ GRADE

TWO (2) 12" DIA. x 2'-6" DEEP CONCRETE PIERS



END VIEW



**F1 F2** S/F EXTERIOR MENUBOARD  
TWO (2) REQUIRED - TAKE FROM STOCK & INSTALL

SCALE: 1/2" = 1' - 0"  
46.66 FT.