

C:\Backup\Revit\WB-Lees Summit\MO\_V18\_PLBG\_200921\_dulm.rvt

12/7/2021 4:23:09 PM

PRCOM20204900

RELEASE FOR  
CONSTRUCTION  
AS NOTED ON PLANS REVIEW  
DEVELOPMENT SERVICES  
LEE'S SUMMIT, MISSOURI  
12/13/2021



**ms consultants, inc.**  
engineers, architects, planners  
2221 Schrock Road  
Columbus, Ohio 43229  
p 614.898.7100  
f 614.898.7570  
www.msconsultants.com

**WHATABURGER 20-M  
LEE'S SUMMIT**

1460 NE DOUGLAS ST  
LEE'S SUMMIT, MO



NOTICE: THIS ARCHITECTURAL AND ENGINEERING  
DRAWING IS GIVEN IN CONFIDENCE AND SHALL BE USED  
ONLY PURSUANT TO THE AGREEMENT WITH THE  
ARCHITECT. NO OTHER USE, DISSEMINATION, OR  
DUPLICATION MAY BE MADE WITHOUT PRIOR WRITTEN  
CONSENT OF THE ARCHITECT. ALL COMMON LAW RIGHTS  
OF COPYRIGHT AND OTHERWISE ARE HEREBY  
SPECIFICALLY RESERVED.



12/22/20  
**PROFESSIONAL OF RECORD:**  
JASON E. CHRISTOFF No.20012002143  
EXP DATE: 12/31/20

REV	DESCRIPTION	DATE

Project No.: 62-40497-01

Client Project No.:

Drawing Title:

**PLUMBING SYMBOLS AND  
ABBREVIATIONS**

Date: 12/22/2020 Phase: BID SET

Designed: DCU

Drawn: DCU

Checked: KFF

**P0.1**

## PLUMBING SYMBOLS

(SOME SYMBOLS MAY NOT BE USED ON THE DRAWINGS)

### ABBREVIATIONS

ABV	ABOVE
ADJ	ADJUSTABLE
AFC	ABOVE FINISHED CEILING
AFF	ABOVE FINISHED FLOOR
AFG	ABOVE FINISHED GRADE
ARCH	ARCHITECT, ARCHITECTURAL
AV	ACID VENT
AVG	AVERAGE
AW	ACID WASTE
BFF	BELOW FINISHED FLOOR
BLDG	BUILDING
BOP	BOTTOM OF PIPE
BOS	BOTTOM OF STRUCTURE
BTU	BRITISH THERMAL UNIT
CAP	CAPACITY
CFH	CUBIC FEET PER HOUR
CFM	CUBIC FEET PER MINUTE
CI	CAST IRON
CIRC	CIRCULATING
CL	CENTERLINE
CLG	CEILING
CO	CLEANOUT
CPVC	CHLORINATED POLYVINYL CHLORIDE
CW	COLD WATER
DCW	DOMESTIC COLD WATER
DGCO	DOUBLE GRADE CLEANOUT
DEG	DEGREES
DIA	DIAMETER
DIM	DIMENSION
DN	DOWN
DS	DOWNSPOUT
DWG	DRAWING
EA	EACH
ELEC	ELECTRICAL
ELEV	ELEVATION
EQUIP	EQUIPMENT
EWB	ENTERING WET BULB
EWC	ELECTRICAL WATER COOLER
EXIST	EXISTING
FCO	FLOOR CLEANOUT
FD	FLOOR DRAIN
FL	FLOW LINE
FLR	FLOOR
FS	FLOOR SINK
F/A	FROM ABOVE
F/B	FROM BELOW
FT	FOOT, FEET
GND	GROUND
G	NATURAL GAS
GA	GAUGE
GAL	GALLON
GALV	GALVANIZED
GC	GENERAL CONTRACTOR
GCO	GRADE CLEANOUT
GPH	GALLONS PER HOUR
GPM	GALLONS PER MINUTE
GT	GREASE TRAP/INTERCEPTOR
GW	GREASE WASTE
HD	HUB DRAIN
HOR	HORIZONTAL
HP	HORSEPOWER
HTG	HEATING
IE	INVERT ELEVATION
IN	INCH
WC	WATER COLUMN
KW	KILOWATT
L	LENGTH
LAV	LAVATORY
LB	POUNDS
LF	LINEAR FEET
MAN	MANUAL
MAX	MAXIMUM
MECH	MECHANICAL
MFGR	MANUFACTURER
MIN	MINIMUM
MS	MOP SINK
N/A	NOT APPLICABLE
NC	NORMALLY CLOSED

NIC	NOT IN CONTRACT
NO	NORMALLY OPEN
NTS	NOT TO SCALE
OC	ON CENTER
OH	OVERHEAD
ORD	OVERFLOW ROOF DRAIN
PH	PHASE
PLBG	PLUMBING
PSI	POUNDS PER SQUARE INCH
PRV	PRESSURE RELIEF VALVE, PRESSURE REDUCING VALVE
PVC	POLYVINYL CHLORIDE
QTY	QUANTITY
RD	ROOF DRAIN
RE	REFERENCE, REFER
RECIRC	RECIRCULATE
REINF	REINFORCING
REQD	REQUIRED
REV	REVISION, REVISE
RM	ROOM
RPM	REVOLUTIONS PER MINUTE
SAN	SANITARY
SEC	SECONDS
SF	SQUARE FEET
SIM	SIMILAR
SQ	SQUARE
SS	STAINLESS STEEL
STD	STANDARD
STL	STEEL
SUSP	SUSPEND
TEMP	TEMPERATURE
THRU	THROUGH
TP	TRAP PRIMER
TYP	TYPICAL
UIF	UNDERFLOOR
UG	UNDERGROUND
UIS	UNDERSLAB
UON	UNLESS OTHERWISE NOTED
UR	URINAL
V	VENT
VAC	VACUUM
VERT	VERTICAL
VFD	VARIABLE FREQUENCY DRIVE
VTR	VENT THROUGH ROOF
W	WATT, WIDTH
W/	WITH
W/O	WITHOUT
WC	WATER CLOSET, WATER COLUMN
WH	WALL HYDRANT
WT	WEIGHT

### SHEET SYMBOLS

	TYPE OF SERVICE (I.E. HW = HOT WATER)	RISER BUBBLE
		EQUIPMENT TAG
		AIR FLOW INDICATOR
		NOTE BY SYMBOL (KEYNOTE)
		REVISION
		POINT OF CONNECTION (NEW TO EXISTING)
		POINT OF DISCONNECTION

### PLUMBING SYMBOLS

	FLOOR SINK DRAIN
	FLOOR DRAIN WITH P-TRAP
	P-TRAP
	ROOF DRAIN / OVERFLOW DRAIN
	HOSE BIBB/WALL HYDRANT
	AIR OUTLET
	WATER HAMMER ARRESTOR, SIZED PER PLUMBING AND DRAINAGE INSTITUTE (PDI) REQUIREMENTS
	CLEANOUT
	PLUMBING FIXTURES
	NEW EQUIPMENT (SIZE, SHAPE WILL VARY)
	RECIRCULATING PUMP
	COMPRESSED AIR DROP WITH FILTER REGULATOR AND QUICK DISCONNECT
	POST HYDRANT
	TRAP PRIMER VALVE

### PIPING SYMBOLS

	PIPE CONTINUATION
	PIPE UP (AND DN)
	ELBOW DOWN
	VALVE IN DROP
	VALVE IN CENTER DROP
	VALVE IN RISE
	DIRECTION OF FLOW
	DIRECTION OF SLOPE DOWN
	CONCENTRIC REDUCER
	ECCENTRIC REDUCER
	TEE OUTLET UP
	TEE OUTLET DOWN
	UNION
	PIPE ANCHOR
	EXPANSION JOINT
	STRAINER WITH BLOWDOWN VALVE
	GATE VALVE
	GLOBE VALVE
	BALL VALVE
	BALANCING VALVE W/

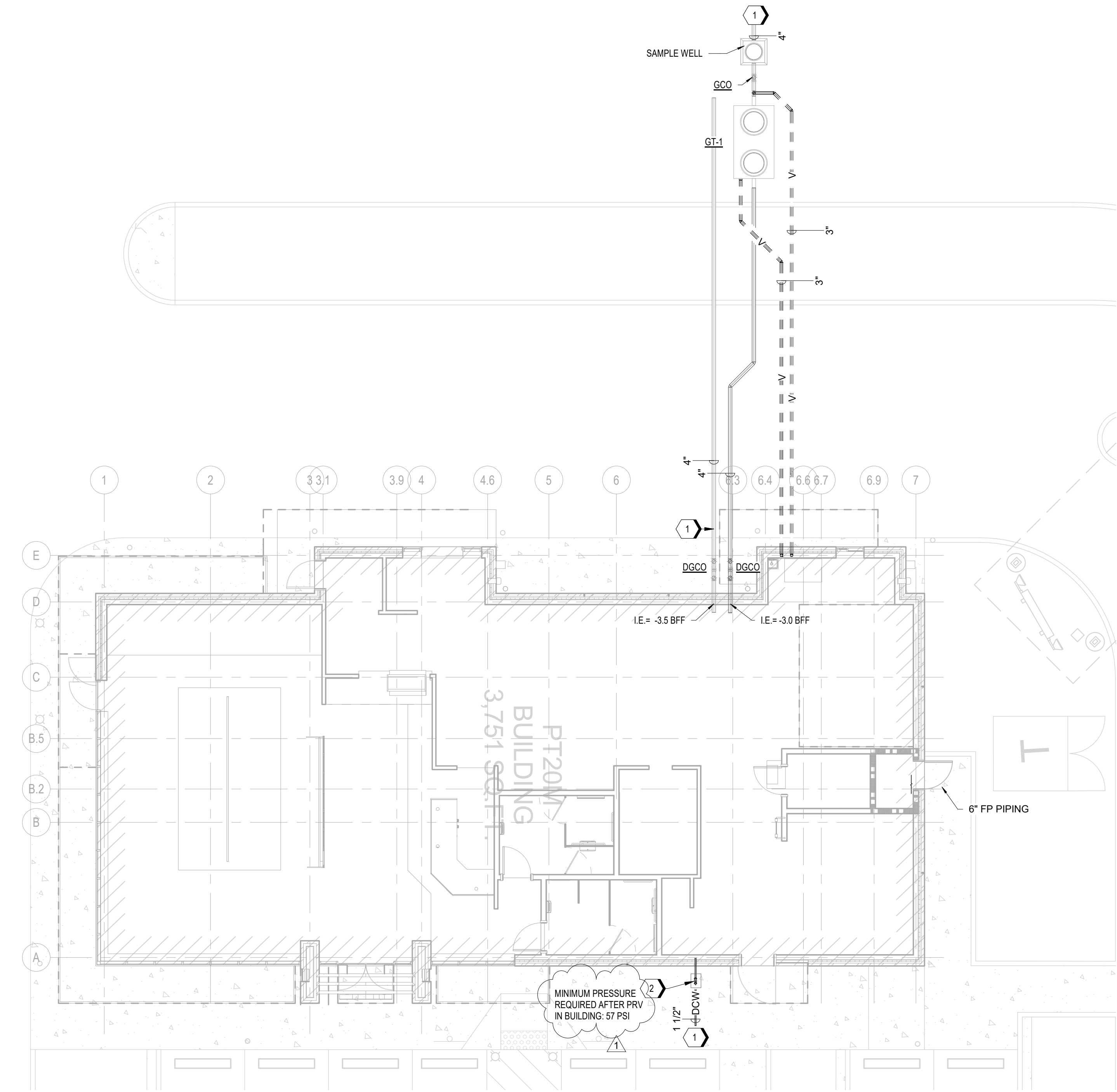
	DIFFERENTIAL PRESSURE TAPS OS&Y VALVE
	CHECK VALVE
	PRESSURE REDUCING VALVE
	PLUG VALVE
	BUTTERFLY VALVE
	PIPE SUPPORT
	2-WAY SELF- OPERATING VALVE
	3-WAY SELF- OPERATING VALVE
	MOTOR OPERATED VALVE
	SOLENOID VALVE
	PNEUMATIC OPERATING VALVE
	GAUGE COCK
	PIPE GUIDE
	PIPE CAP
	FLOW SWITCH
	PRESSURE SWITCH
	T&P RELIEF VALVE
	PRESSURE GAUGE WITH GAUGE COCK
	THERMOMETER
	WATER METER
	GAS REGULATOR
	FLEXIBLE CONNECTION
	PIPE FLANGE
	THERMOMETER WELL
	PRESSURE LIMITING VALVE
	PETE'S PLUG
	FIRE SPRINKLER HEAD
	PIPE CLEAN OUT
	WALL CLEANOUT
	REDUCED PRESSURE BACKFLOW PREVENTER
	THERMOSTATIC MIXING VALVE

### PIPING LABELS

	SANITARY WASTE
	SANITARY VENT
	GREASE WASTE
	CONDENSATE DRAIN
	ACID WASTE
	ACID VENT
	NON-POTABLE WATER
	DOMESTIC COLD WATER
	DOMESTIC HOT WATER
	DOMESTIC HOT WATER RECIRCULATION
	REVERSE OSMOSIS WATER
	SOFT WATER
	COMPRESSED AIR (PRESSURE NOTED)
	NATURAL GAS
	PROPANE GAS
	TRENCH DRAIN LINE
	ROOF DRAIN
	OVERFLOW DRAIN
	NON-POTABLE WATER
	TRAP PRIMER
	REVERSE OSMOSIS WATER
	VACUUM

### GENERAL NOTES

- REFER TO SPECIFICATIONS FOR MATERIALS AND METHODS FOR CONSTRUCTION.
- COORDINATE WORK WITH ALL OTHER TRADES.
- MAINTAIN A MINIMUM OF 8 INCHES ABOVE FINISHED CEILING TO PROVIDE CLEARANCE FOR LIGHTING FIXTURES.
- PLUMBING CONTRACTOR SHALL VERIFY ALL INVERT ELEVATIONS WITH THE CIVIL DRAWINGS PRIOR TO COMMENCING WORK.
- ROUTE PIPING CONCEALED THROUGHOUT EXCEPT WHERE INDICATED.
- SLOPE ALL SANITARY PIPING AT 1/4" PER FOOT MINIMUM UNLESS NOTED OTHERWISE.
- LOCATE CLEANOUTS WHERE INDICATED. EXACT PLACEMENT SHALL PROVIDE NECESSARY CLEARANCES AS PER THE LOCAL PLUMBING CODE. PROVIDE ADDITIONAL FLOOR CLEANOUTS AS NECESSARY TO COMPLY WITH CODES AND THE LOCAL AUTHORITY HAVING JURISDICTION.
- COORDINATE THE EXACT LOCATION OF SLEEVES, FLOOR DRAINS, FLOOR SINKS, AND FLOOR CLEANOUTS WITH THE ARCHITECTURAL AND STRUCTURAL DRAWINGS, AND MECHANICAL EQUIPMENT LOCATIONS PRIOR TO INSTALLATION OF DRAINS.
- COORDINATE WORK WITH ARCHITECTURAL FEATURES AND COORDINATE WORK SO THAT INTERFERENCES BETWEEN PIPING, EQUIPMENT, MECHANICAL WORK, ELECTRICAL WORK, AND BUILDING STRUCTURE WILL BE AVOIDED.
- FURNISH ACCESS DOORS IN WALLS AND CEILINGS TO ACCESS CONCEALED PLUMBING EQUIPMENT, VALVES, WATER HAMMER ARRESTORS, CONTROLS, AND OTHER DEVICES.
- VERIFY EXACT LOCATIONS OF CITY SANITARY SEWER AND WATER MAINS, AND ADJUST PIPING LOCATIONS AS REQUIRED BY CODE.
- FURNISH AND INSTALL GREASE INTERCEPTOR PER DETAIL IN THIS DRAWING SET OR AS REQUIRED BY CODE.
- FURNISH AND INSTALL CONDENSATE AND INDIRECT DRAINS FROM KITCHEN EQUIPMENT AS DIRECTED BY KITCHEN EQUIPMENT MANUFACTURER.
- POTABLE WATER SYSTEM DESIGN IS BASED UPON A PRESSURE OF 50.5 PSI AVAILABLE AT THE BUILDING. IF CONDITIONS ARE DIFFERENT, ADJUST PIPE SIZING ACCORDINGLY.
- COORDINATE PLUMBING FIXTURE PLACEMENT WITH WALL LOCATIONS AS DIMENSIONED ON ARCHITECTURAL DRAWINGS.
- WHATABURGER TO PROVIDE T & S BRASS FAUCETS FOR ALL FIXTURES REQUIRING FAUCETS INSTALLED BY THE GENERAL CONTRACTOR, EXCEPT EXTERIOR HOSE BIBBS WHICH SHALL BE BOTH FURNISHED AND INSTALLED BY THE GC.



B1 PLUMBING SITE PLAN  
1/8" = 1'-0"

GENERAL NOTES

- A. REFER TO P0.1 FOR GENERAL NOTES, SYMBOLS, AND ABBREVIATIONS.  
B. REFER TO CIVIL DRAWINGS FOR ADDITIONAL PLAN AND DETAIL INFORMATION.

KEYNOTES

1. REFERENCE CIVIL FOR CONTINUATION.  
2. MAIN SHUT-OFF VALVE IN CAST IRON BOX.

RELEASE FOR  
CONSTRUCTION  
AS NOTED ON PLANS REVIEW  
DEVELOPMENT SERVICES  
LEE'S SUMMIT, MISSOURI  
12/13/2021

ms

**ms consultants, inc.**  
engineers, architects, planners  
2221 Schrock Road  
Columbus, Ohio 43229  
p 614.898.7100  
f 614.898.7570  
www.msconsultants.com

WHATABURGER 20-M  
LEE'S SUMMIT

1480 NE DOUGLAS ST  
LEE'S SUMMIT, MO



NOTICE: THIS ARCHITECTURAL AND ENGINEERING  
DRAWING IS GIVEN IN CONFIDENCE AND SHALL BE USED  
ONLY PURSUANT TO THE AGREEMENT WITH THE  
ARCHITECT. NO OTHER USE, DISSEMINATION, OR  
DUPLICATION MAY BE MADE WITHOUT PRIOR WRITTEN  
CONSENT OF THE ARCHITECT. ALL COMMON LAW RIGHTS  
OF COPYRIGHT AND OTHERWISE ARE HEREBY  
SPECIFICALLY RESERVED.



12/22/20  
PROFESSIONAL OF RECORD:  
JASON E. CHRISTOFF No.20012002143  
EXP DATE: 12/31/20

REV	DESCRIPTION	DATE
1	REV-1 Plan Review	01/27/21

Project No.: 62-40497-01

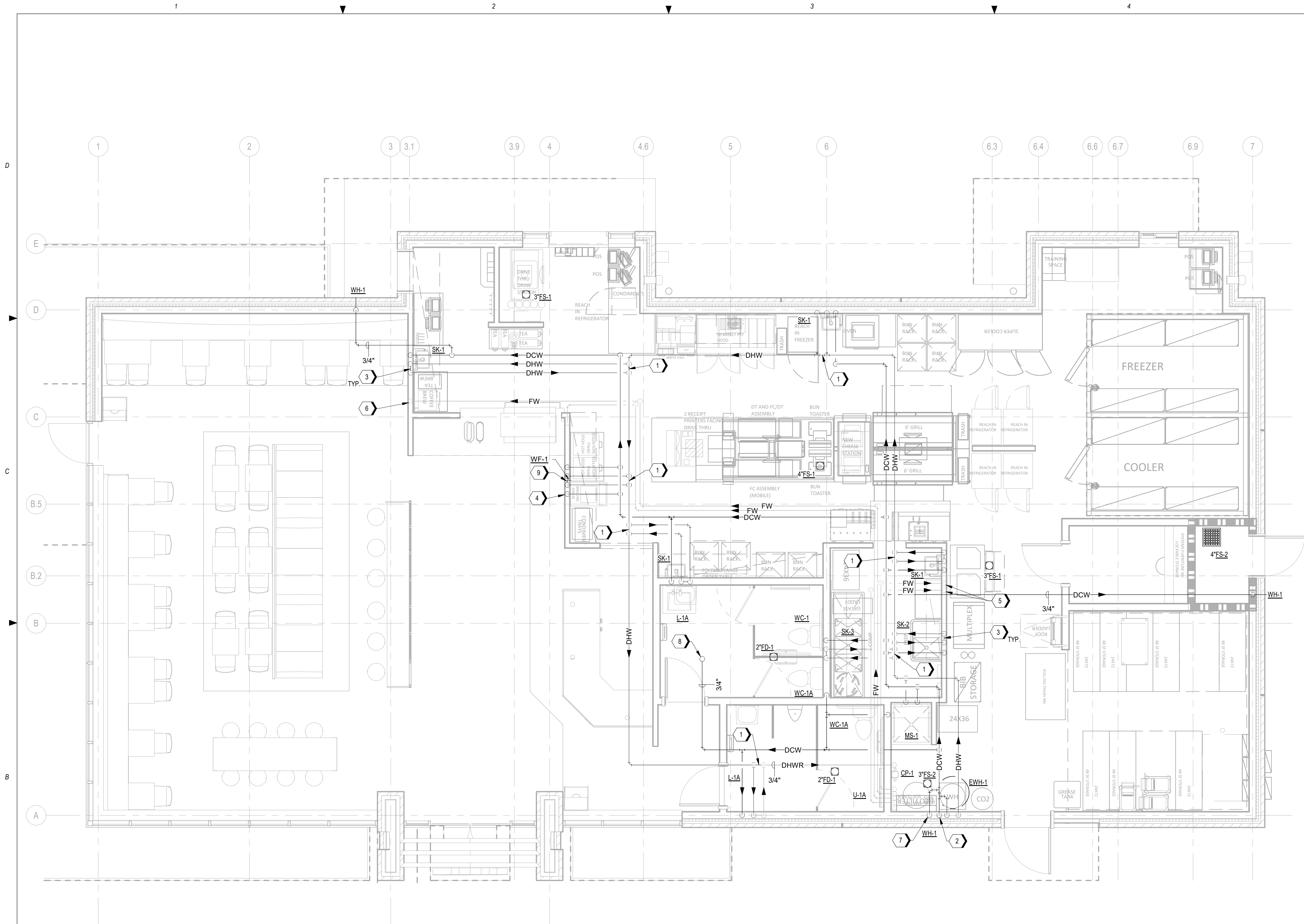
Client Project No.:

Drawing Title:

PLUMBING SITE PLAN

Date: 12/22/2020 Phase: BID SET  
Designed: DCU Drawing No.:  
Drawn: DCU  
Checked: KFF

P1.0



1 PLUMBING DOMESTIC WATER PLAN  
1/4" = 1'-0"

## GENERAL NOTES

- A. REFER TO P0.1 FOR GENERAL NOTES, SYMBOLS, AND ABBREVIATIONS.
- B. REFER TO PLUMBING RISER DIAGRAMS AND SCHEDULES FOR ADDITIONAL PIPE ROUTING AND SIZING.
- C. PROVIDE ASSE-1070 CERTIFIED THERMOSTATIC MIXING VALVES AT ALL LAVATORIES AND HANDSINKS. REFER TO PLUMBING SCHEDULES.

## KEYNOTES

1. NORMALLY CLOSED BALL VALVE.
2. 1-1/2" DOMESTIC WATER ENTRY REFER TO SHEETS P1.0 AND P3.1 FOR ADDITIONAL INFORMATION. PROVIDE PRESSURE REDUCING VALVE IN AN ACCESSIBLE LOCATION. SET TO VALVE TO PROVIDE A MINIMUM PRESSURE OF 55 PSI.
3. ROUTE DOMESTIC HOT WATER LOOP DOWN IN WALL TO BEHIND FIXTURE STOPS.
4. ROUTE 3/8" DCW DOWN IN WALL TO SHAKE MACHINE. PROVIDE STUB-OUT AT 24" AFF.
5. ROUTE 1/2" FW DOWN IN WALL AND PROVIDE STUB-OUT WITH SHUT-OFF VALVE AT ICE MACHINE CONNECTION(S), APPROXIMATELY 62" AFF.
6. ROUTE 1/2" FW DOWN IN WALL AND PROVIDE (2) 3/8" STUB-OUT CONNECTIONS WITH SHUT-OFF VALVES AT 48" AFF FOR COFFEE AND TEA BREWERS.
7. PROVIDE 3/4" DCW STUB-OUT CONNECTION WITH SHUT-OFF VALVE AT 84" AFF FOR FILTER SYSTEM.
8. 1" DCW UP TO ROOF HYDRANT. ROUTE DRAIN FULL-SIZED TO DISCHARGE INTO MOP SINK.
9. PROVIDE 1/2" CW & HW TO WF-1 WALL MTD FAUCET AT 60" A.F.F. (WITH SHUT-OFF VALVES).

RELEASE FOR  
CONSTRUCTION  
AS NOTED ON PLANS REVIEW  
DEVELOPMENT SERVICES  
LEE'S SUMMIT, MISSOURI  
12/13/2021

ms

ms consultants, inc.  
engineers, architects, planners  
2221 Schrock Road  
Columbus, Ohio 43229  
p 614.898.7100  
f 614.898.7570  
www.msconsultants.com

## WHATABURGER 20-M LEE'S SUMMIT

1460 NE DOUGLAS ST  
LEE'S SUMMIT, MO



NOTICE: THIS ARCHITECTURAL AND ENGINEERING  
DRAWING IS GIVEN IN CONFIDENCE AND SHALL BE USED  
ONLY PURSUANT TO THE AGREEMENT WITH THE  
ARCHITECT. NO OTHER USE, DISSEMINATION, OR  
DUPLICATION MAY BE MADE WITHOUT PRIOR WRITTEN  
CONSENT OF THE ARCHITECT. ALL COMMON LAW RIGHTS  
OF COPYRIGHT AND OTHERWISE ARE HEREBY  
SPECIFICALLY RESERVED.



12/22/20  
PROFESSIONAL OF RECORD:  
JASON E. CHRISTOFF No.20012002143  
EXP DATE: 12/31/20

REV	DESCRIPTION	DATE
1	REV-1 Plan Review	01/27/21

Project No.: 62-40497-01

Client Project No.:

Drawing Title:

PLUMBING DOMESTIC WATER  
PLAN

Date: 12/22/2020 Phase: BID SET

Designed: DCU

Drawn: DCU

Checked: KFF

Drawing No.:

P1.1

1460 NE DOUGLAS ST  
LEE'S SUMMIT, MO

# WHATABURGER 20-M LEE'S SUMMIT



NOTICE: THIS ARCHITECTURAL AND ENGINEERING  
DRAWING IS GIVEN IN CONFIDENCE AND SHALL BE USED  
ONLY PURSUANT TO THE AGREEMENT WITH THE  
ARCHITECT. NO OTHER USE, DISSEMINATION, OR  
DUPLICATION MAY BE MADE WITHOUT PRIOR WRITTEN  
CONSENT OF THE ARCHITECT. ALL COMMON LAW RIGHTS  
OF COPYRIGHT AND OTHERWISE ARE HEREBY  
SPECIFICALLY RESERVED.



12/22/20  
PROFESSIONAL OF RECORD:  
JASON E. CHRISTOFF No.20012002143  
EXP DATE: 12/31/20

REV	DESCRIPTION	DATE

Project No.: 62-40497-01

Client Project No.:

Drawing Title:

PLUMBING DWV PLAN

Date: 12/22/2020

Phase: BID SET

Designed: DCU

Drawing No.:

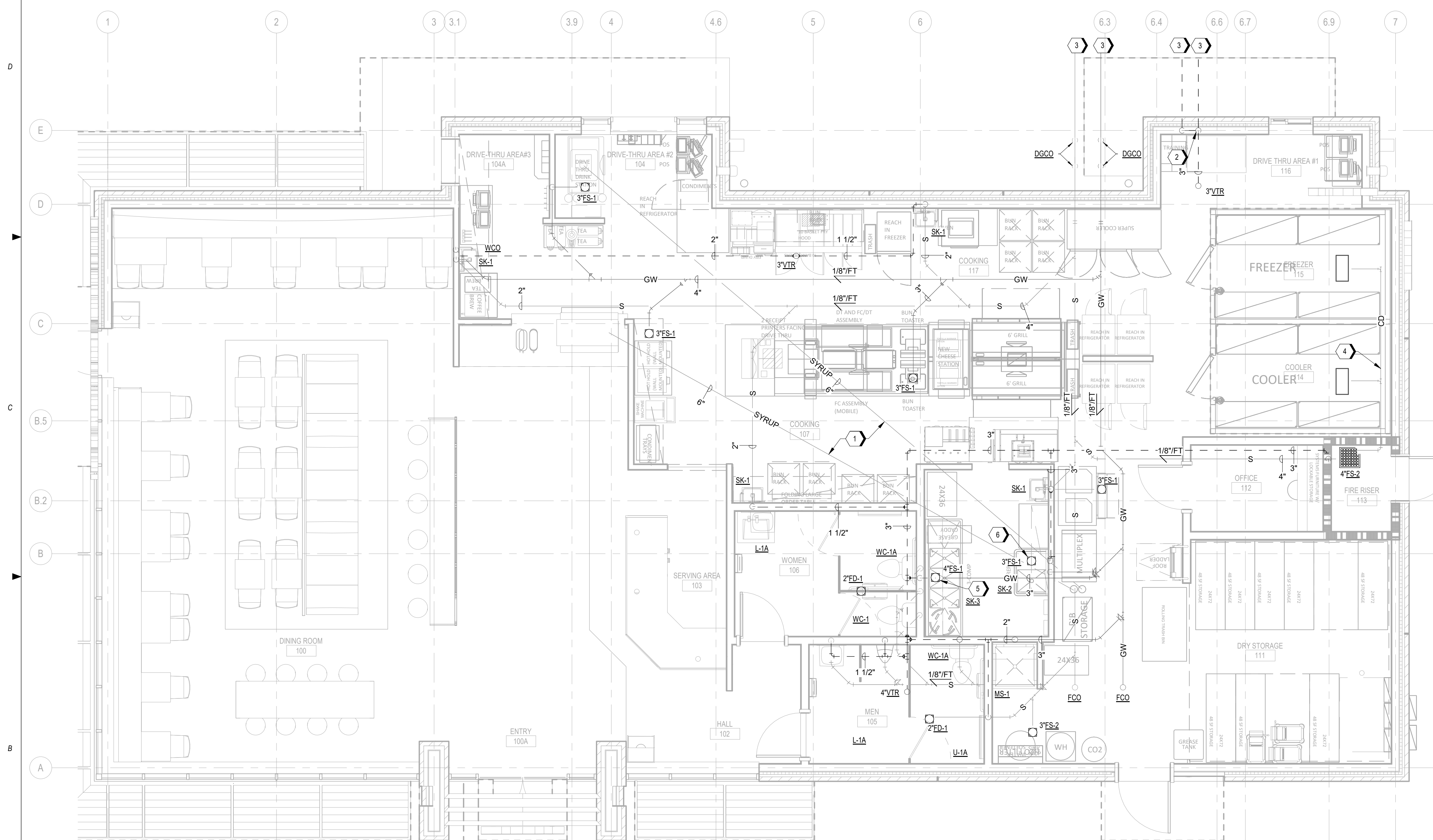
Drawn : DCU

Checked: KFF

P1.2

A.	REFER TO P.01 FOR GENERAL NOTES, SYMBOLS, AND ABBREVIATIONS.
B.	REFER TO PLUMBING RISER DIAGRAMS AND SCHEDULES FOR ADDITIONAL PIPE ROUTING AND SIZING.
C.	NO 90 DEGREE WASTE FITTINGS ARE TO BE USED IN THE HORIZONTAL POSITION BELOW THE SLAB. UTILIZE 45 DEGREE FITTINGS CREATING A MINIMUM 3' SWEEP.

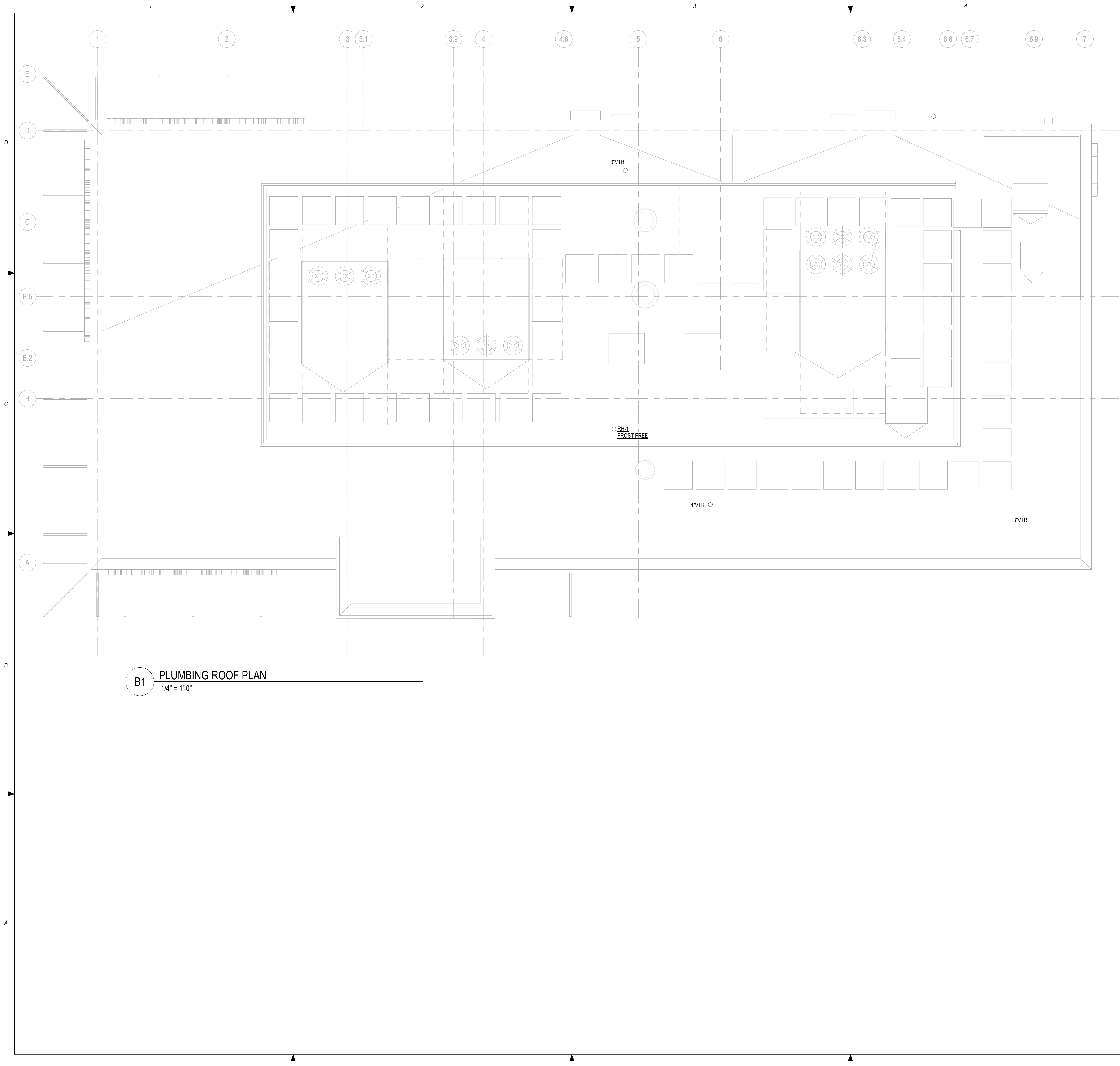
- 1 8" PVC FOR SYRUP CHASE ABOVE CEILING. REFER TO ARCHITECTURAL PLANS FOR DETAILS.
- 2 ROUTE RUNTS FROM GREASE INTERCEPTOR WITH WALL CLEANOUTS DIRECTLY TO ROOF. COMBINE
- 3 3" VENTS AT 3' AFF. (MIN.) IF PERMITTED BY AHJ.
- 4 REFERENCE CIVIL FOR CONTINUATION.
- 5 1" INSULATED COPPER CONDENSATE DRAIN FROM FREEZER & COOLER. PROVIDE CLEANOUTS AS
- 6 REQUIRED AND HEAT TRACE (AS SPECIFIED IN GENERAL NOTES). SEAL ALL WALL PENETRATIONS
- 7 AND DISCHARGE INTO FLOOR SINK WITH CODE APPROVED AIR GAP.
- 8 ROUTE INDIVIDUAL COPPER DRAIN LINES FROM EACH SINK BASIN AND DISCHARGE INDIRECTLY TO
- 9 FLOOR SINK WITH CODE APPROVED AIR GAP.
- 10 ROUTE COPPER DRAIN LINE FROM SINK BASIN AND DISCHARGE INDIRECTLY TO FLOOR SINK WITH
- 11 CODE APPROVED AIR GAP.



1/4" = 1'-0"

C:\Backup\Revit\WB-Lees Summit-MO\_V16\_PLBG\_200921\_dulm.rvt

12/7/2021 4:23:23 PM



**B1** PLUMBING ROOF PLAN  
1/4" = 1'-0"

GENERAL NOTES

- A. REFER TO P0.1 FOR GENERAL NOTES, SYMBOLS, AND ABBREVIATIONS.
- B. REFER TO PLUMBING RISER DIAGRAMS AND SCHEDULES FOR ADDITIONAL PIPE ROUTING AND SIZING.

RELEASE FOR  
CONSTRUCTION  
AS NOTED ON PLANS REVIEW  
DEVELOPMENT SERVICES  
LEE'S SUMMIT, MISSOURI  
12/13/2021

**ms consultants, inc.**  
engineers, architects, planners  
2221 Schrock Road  
Columbus, Ohio 43229  
p 614.898.7100  
f 614.898.7570  
www.msconsultants.com

**WHATABURGER 20-M  
LEE'S SUMMIT**  
1460 NE DOUGLAS ST  
LEE'S SUMMIT, MO



NOTICE: THIS ARCHITECTURAL AND ENGINEERING  
DRAWING IS GIVEN IN CONFIDENCE AND SHALL BE USED  
ONLY PURSUANT TO THE AGREEMENT WITH THE  
ARCHITECT. NO OTHER USE, DISSEMINATION, OR  
DUPLICATION MAY BE MADE WITHOUT PRIOR WRITTEN  
CONSENT OF THE ARCHITECT. ALL COMMON LAW RIGHTS  
OF COPYRIGHT AND OTHERWISE ARE HEREBY  
SPECIFICALLY RESERVED.



12/22/20  
PROFESSIONAL OF RECORD:  
JASON E. CHRISTOFF No.20012002143  
EXP DATE: 12/31/20

REV	DESCRIPTION	DATE

Project No.: 62-40497-01

Client Project No.:

Drawing Title:

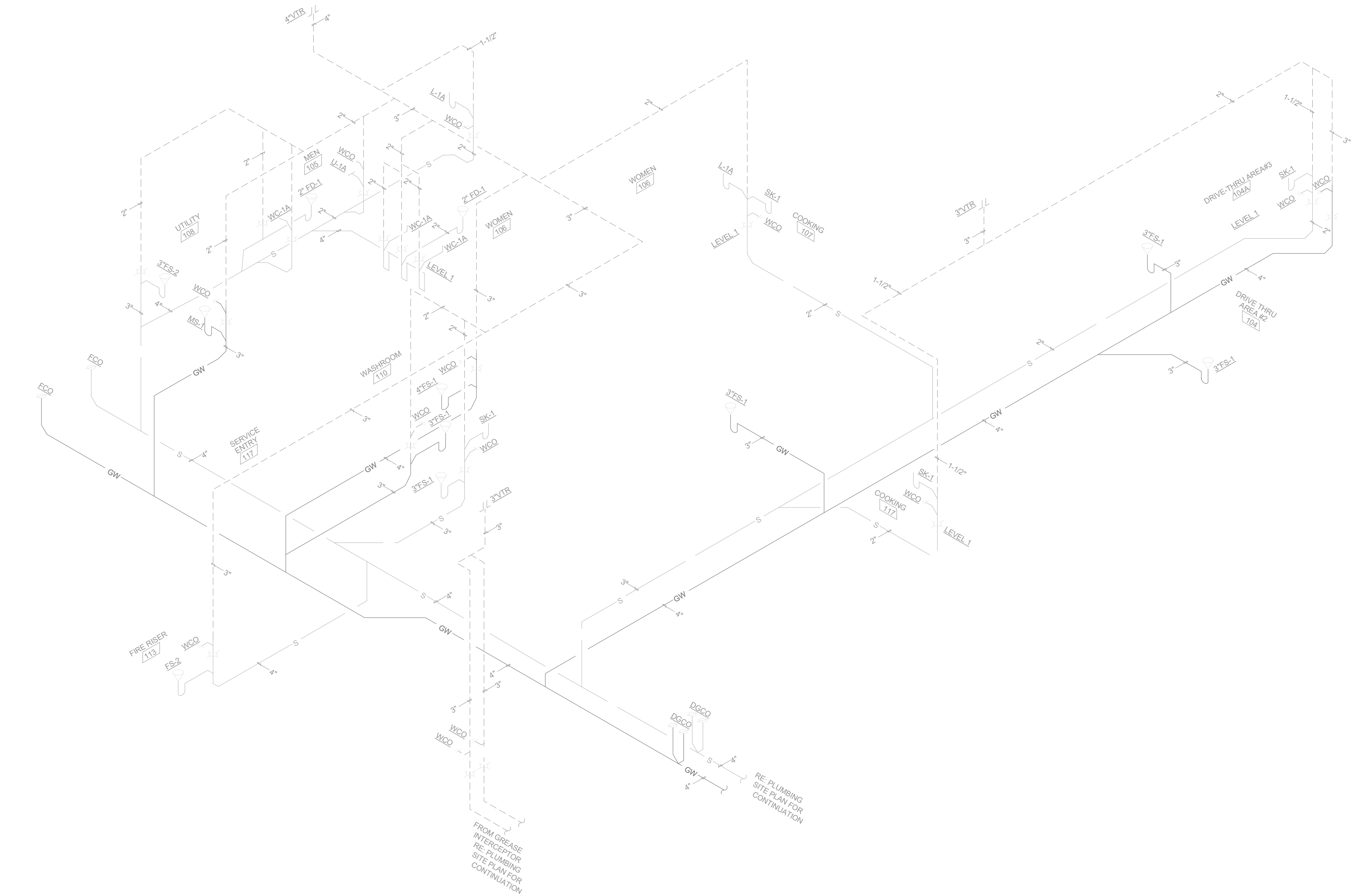
PLUMBING ROOF PLAN

Date: 12/22/2020 Phase: BID SET  
Designed: DCU Drawing No.:  
Drawn: DCU  
Checked: KFF

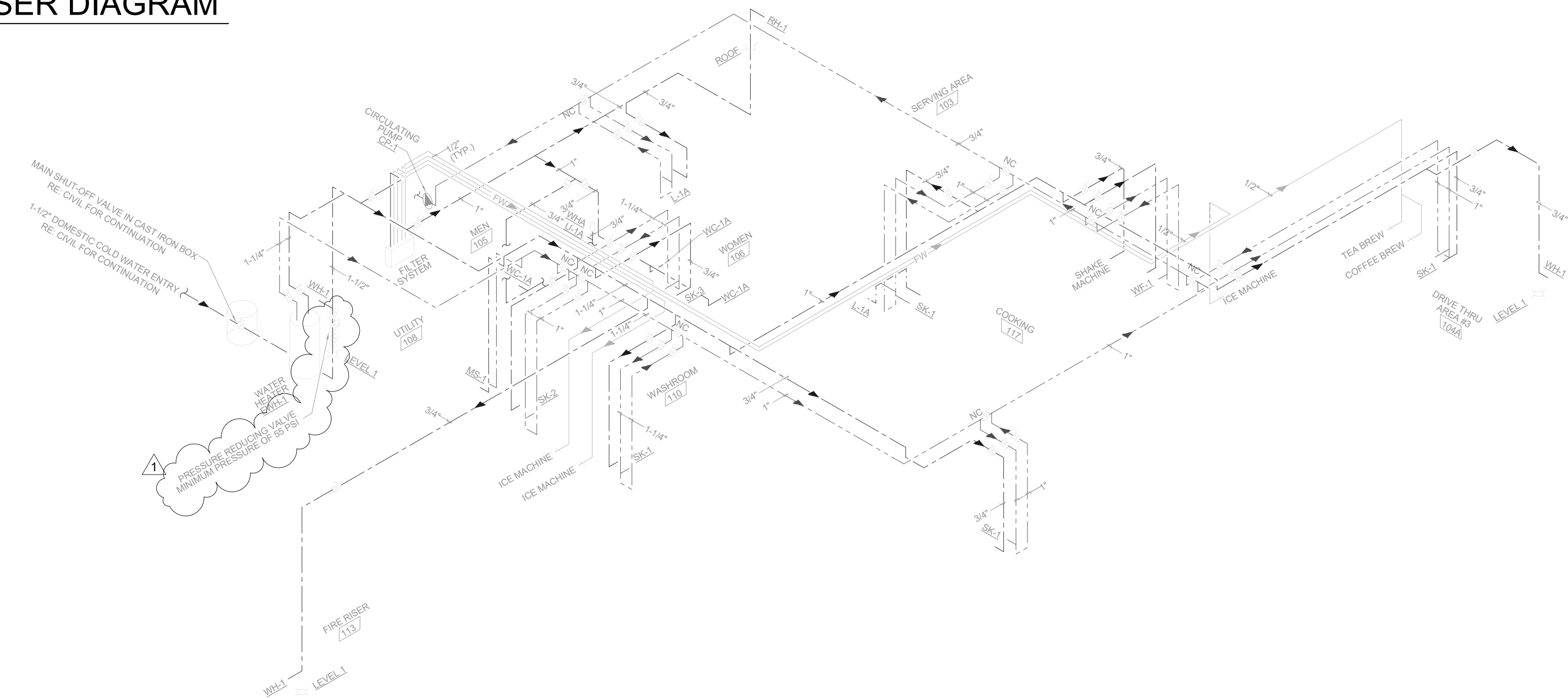
P2.1

C:\Backup\Revit\WB-Lees Summit-MO\_V18\_PLBG\_200921\_dlm.rvt

12/7/2021 4:23:24 PM



**B1** DRAIN, WASTE, AND VENT RISER DIAGRAM  
NOT TO SCALE



**A2** DRAIN, WATER RISER DIAGRAM  
NOT TO SCALE

RELEASE FOR  
CONSTRUCTION  
AS NOTED ON PLANS REVIEW  
DEVELOPMENT SERVICES  
LEE'S SUMMIT, MISSOURI  
12/13/2021

ms

**ms consultants, inc.**  
engineers, architects, planners  
2221 Schrock Road  
Columbus, Ohio 43229  
p 614.898.7100  
f 614.898.7570  
www.msconsultants.com

# WHATABURGER 20-M LEE'S SUMMIT

1460 NE DOUGLAS ST  
LEE'S SUMMIT, MO



NOTICE: THIS ARCHITECTURAL AND ENGINEERING  
DRAWING IS GIVEN IN CONFIDENCE AND SHALL BE USED  
ONLY PURSUANT TO THE AGREEMENT WITH THE  
ARCHITECT. NO OTHER USE, DISSEMINATION, OR  
DUPLICATION MAY BE MADE WITHOUT PRIOR WRITTEN  
CONSENT OF THE ARCHITECT. ALL COMMON LAW RIGHTS  
OF COPYRIGHT AND OTHERWISE ARE HEREBY  
SPECIFICALLY RESERVED.



12/22/20  
PROFESSIONAL OF RECORD:  
JASON E. CHRISTOFF No.20012002143  
EXP DATE: 12/31/20

REV	DESCRIPTION	DATE
1	REV-1 Plan Review	01/27/21

Project No.: 62-40497-01

Client Project No.:

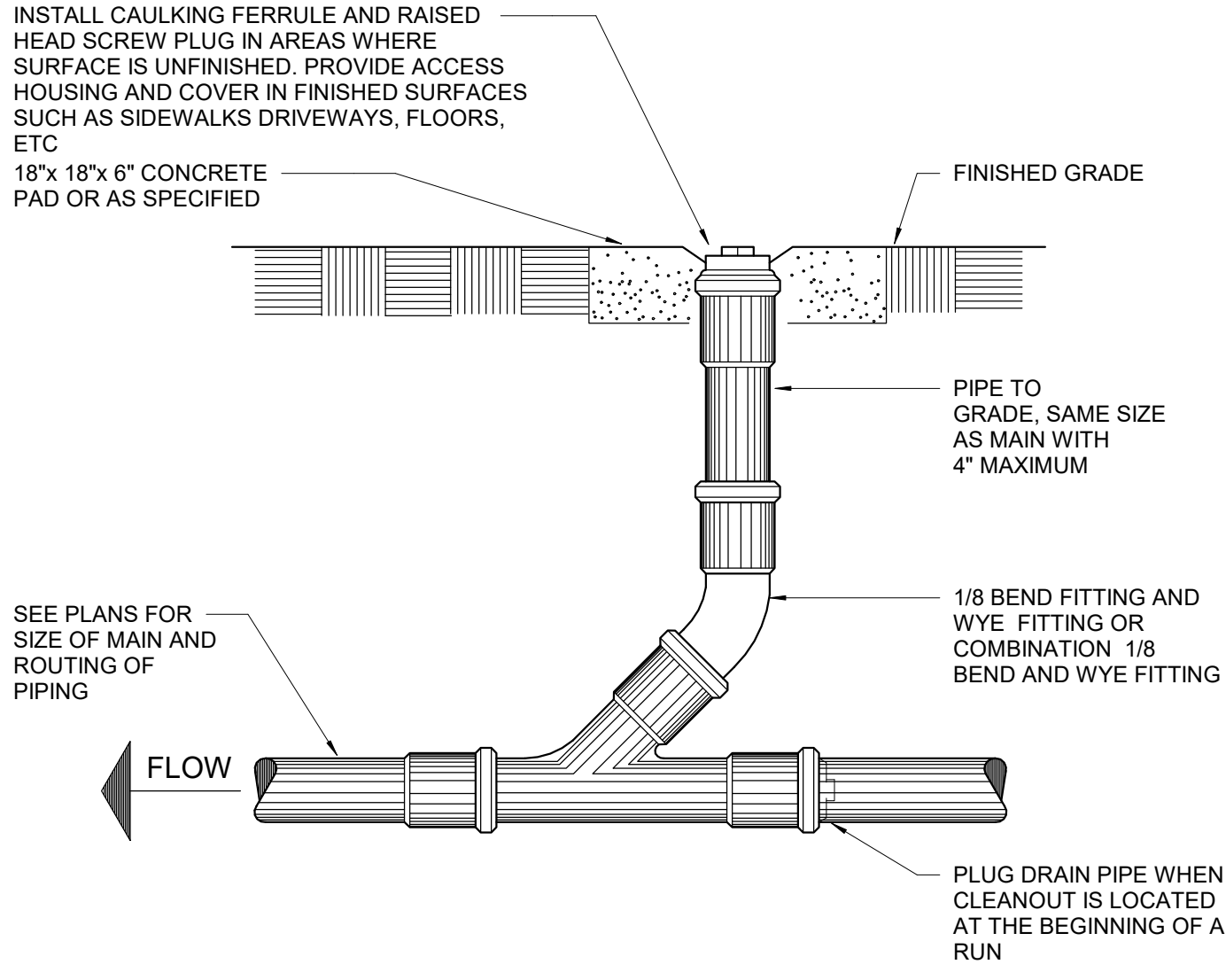
Drawing Title:

PLUMBING RISER DIAGRAMS

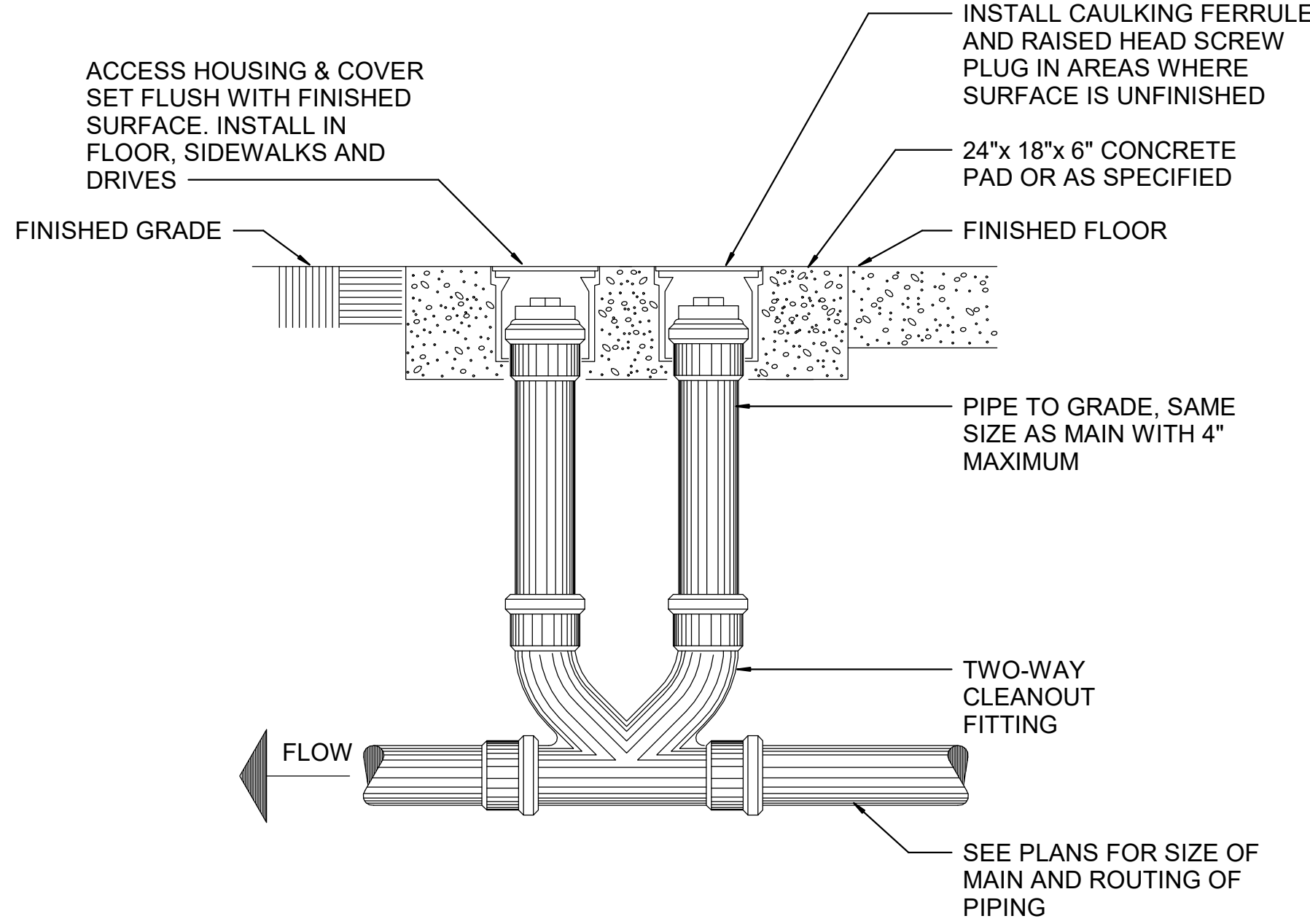
Date: 12/22/2020 Phase: BID SET  
Designed: DCU Drawing No.:  
Drawn: DCU  
Checked: KFF

P3.1

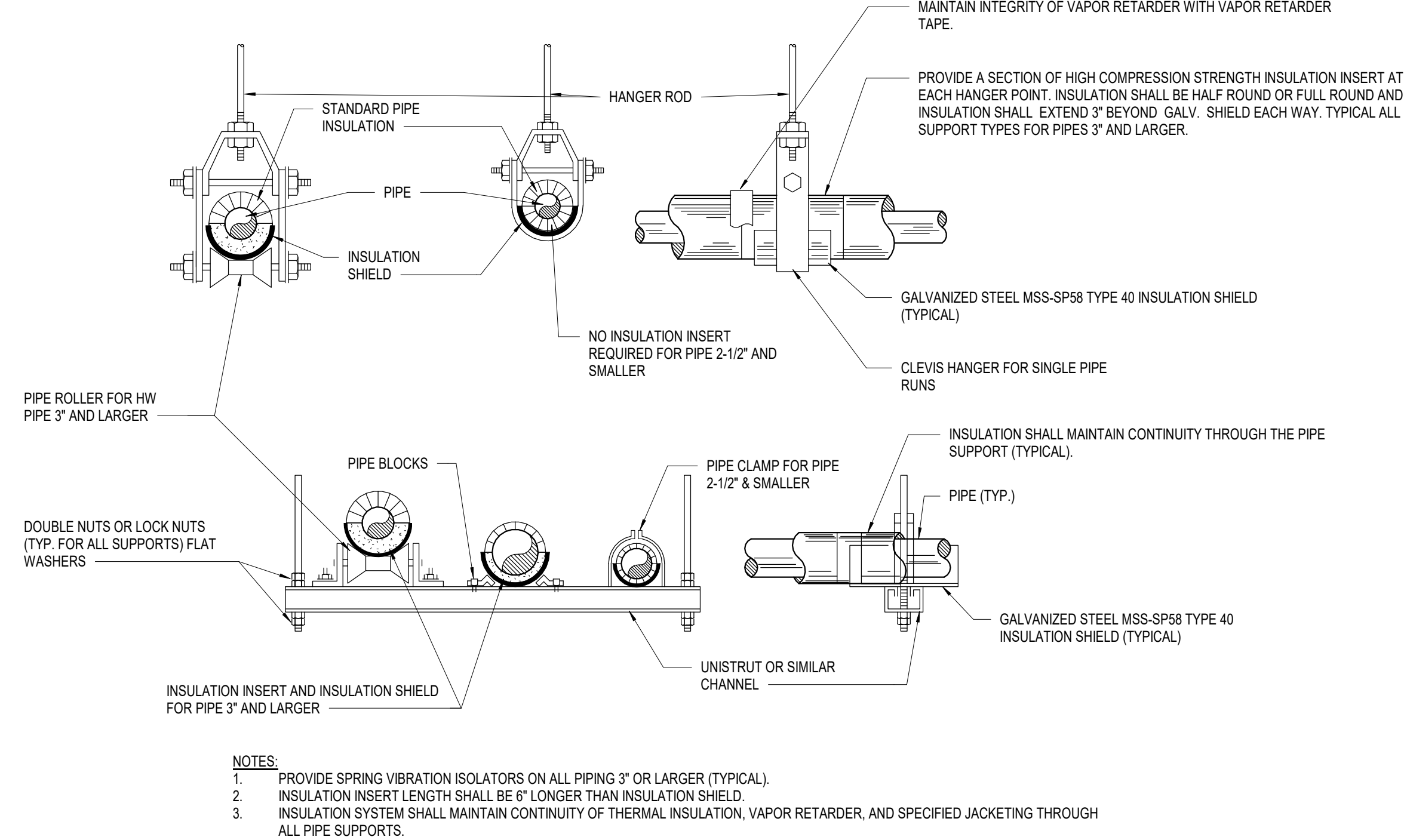
C:\Backup\Revit\WB-Lees Summit-MO\_V18\_PLBG\_200921\_dum.rvt 12/7/2021 4:23:25 PM



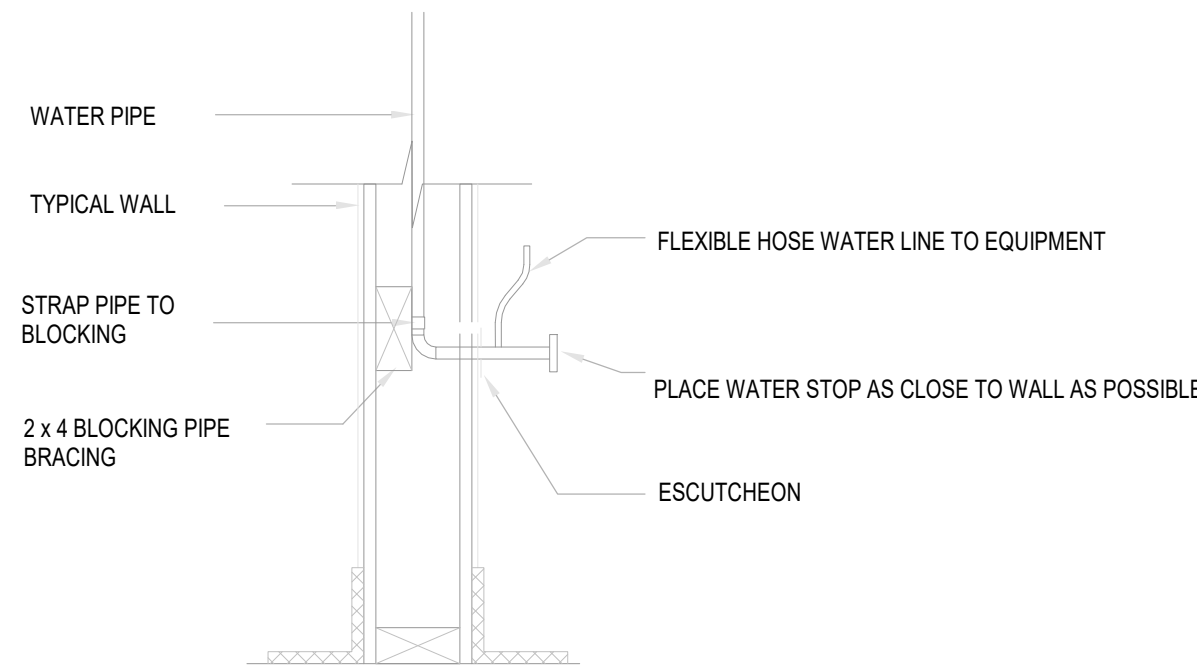
C1 GRADE CLEANOUT  
12" = 1'-0"



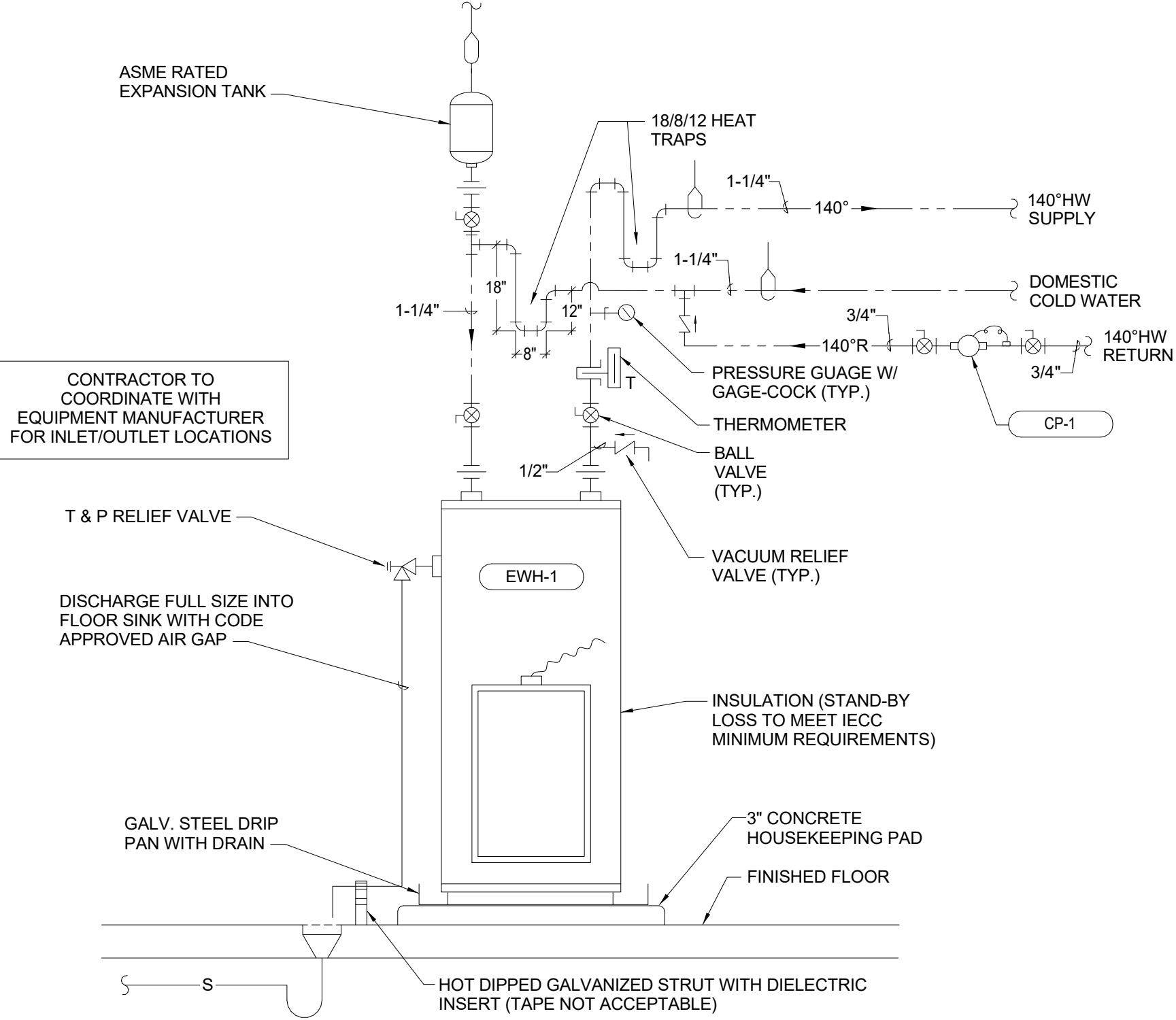
C2 DOUBLE GRADE CLEANOUT  
12" = 1'-0"



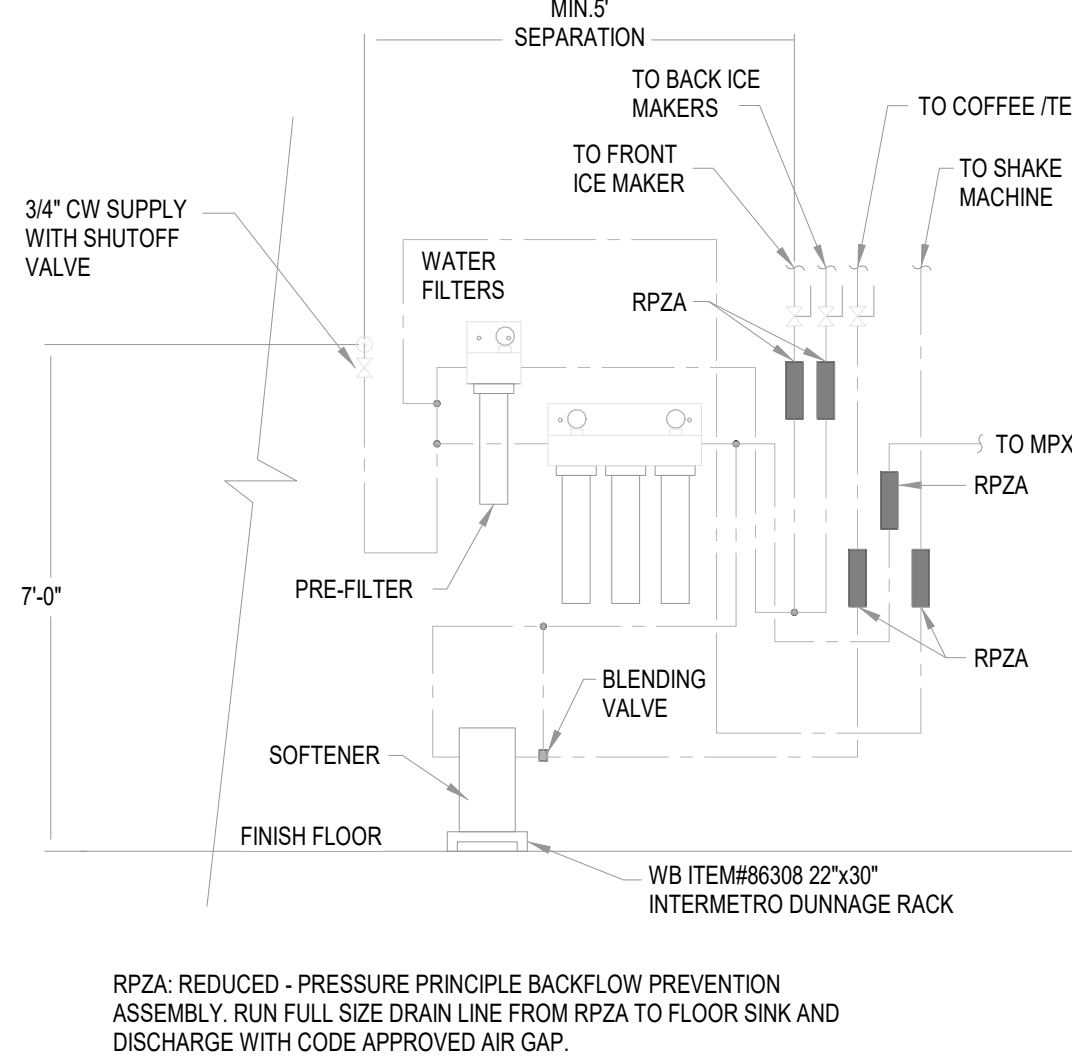
C4 PIPE SUPPORT DETAIL  
12" = 1'-0"



B1 WATER CONNECTION DETAIL  
NOT TO SCALE



B2 WATER HEATER DETAIL  
12" = 1'-0"

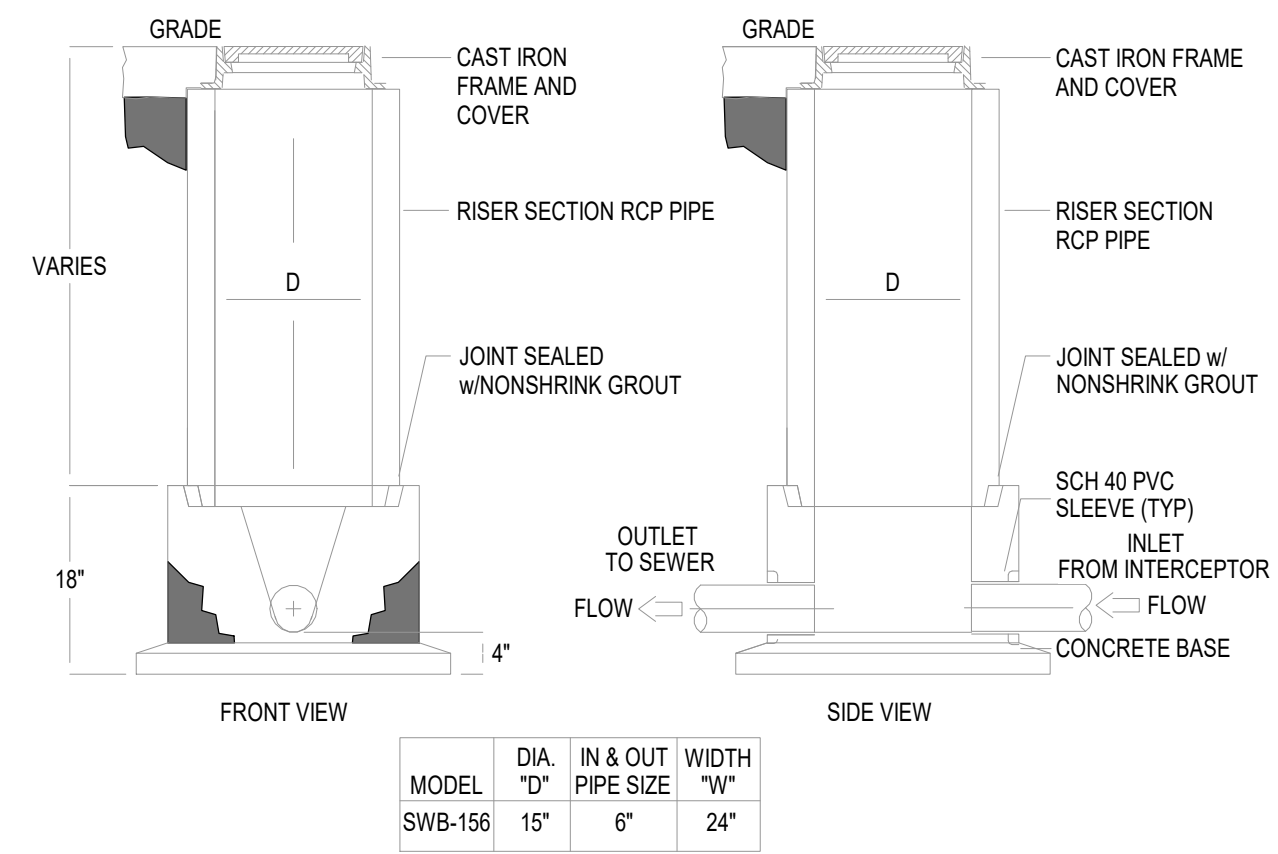


A1 DRINK FILTER ELEVATION  
NOT TO SCALE

GREASE INTERCEPTOR CALCULATION:

MEALS PER HOUR	X	WASTE FLOW RATE	X	RETENTION TIME	X	STORAGE FACTOR
84	X	2	X	1.5	X	1.5 = 378GPH (1,500 GALLON SUBMITTED)

A2 GREASE INTERCEPTOR CALCULATION  
NOT TO SCALE



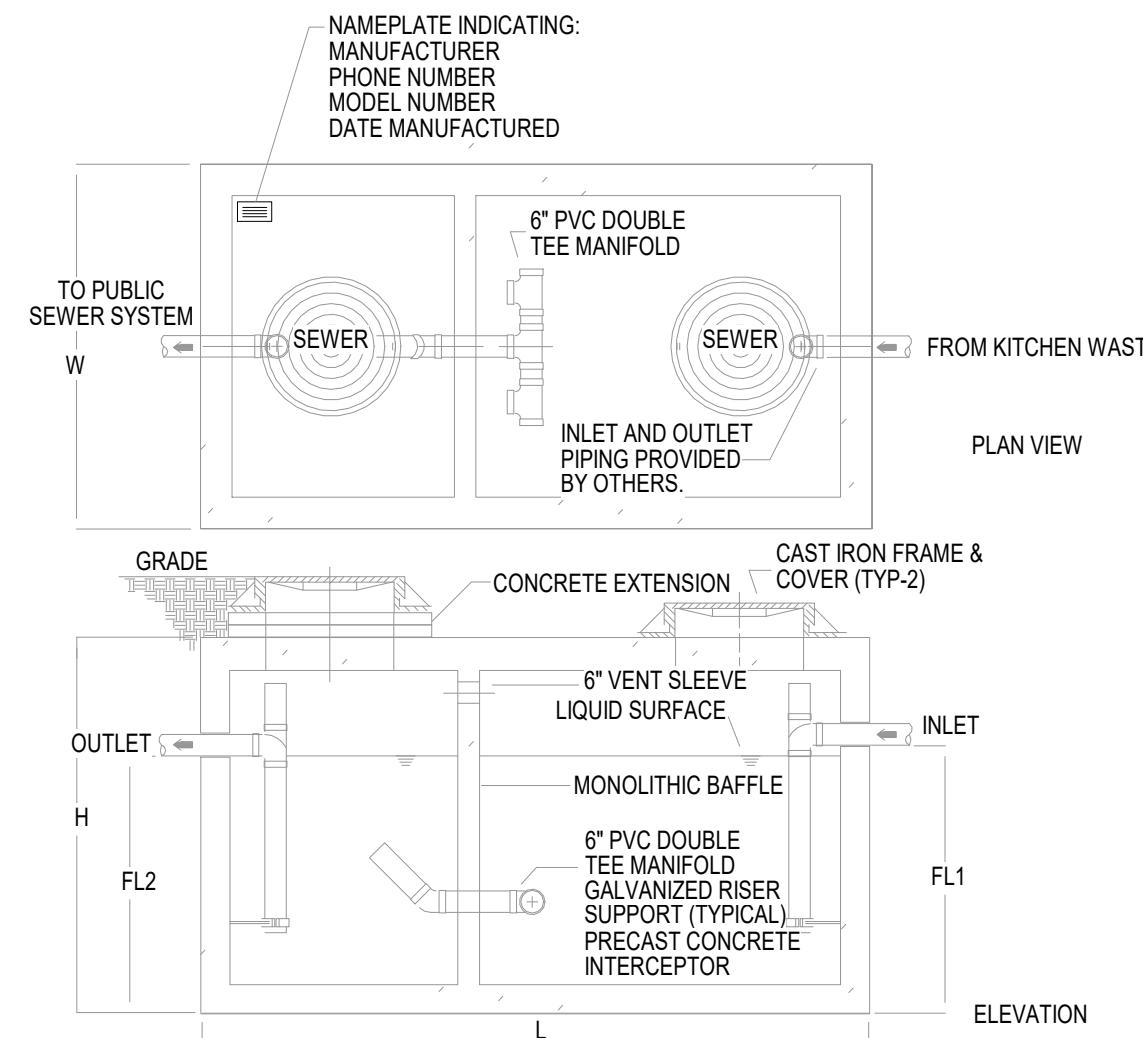
- NOTES
- SAMPLING WELL MUST BE INSTALLED UNDER A SEPARATE PLUMBING PERMIT.
  - USE 15" T&G R.C.P. FOR INSTALLATION FOR INSTALLATION 6'-0" DEEP AND LESS.
  - USE 24" T&G R.C.P. FOR INSTALLATION GREATER THAN 6'-0" DEEP. (STD RING AND M.H. COVER REQUIRED).
  - SAMPLING WELL MUST BE SET IN A CIRCULAR OR SQUARE CONCRETE PAD (1'-0" GREATER THAN OUTSIDE DIAMETER OF PIPE). INSTALLATION NOT PERMITTED, WHERE OUTSIDE INSTALLATION IS POSSIBLE.
  - LAWN INSTALLATION MUST BE 4" ABOVE FINISHED GRADE.
  - DRIVE & SIDEWALK INSTALLATION MUST BE BROUGHT TO FINISHED GRADE.
  - TO BE INSTALLED ON PRIVATE PROPERTY, IN AN ACCESSIBLE LOCATION TO CITY PERSONNEL.

SPECIFICATIONS

CONCRETE : Class 1 concrete with of design strength of 4500 PSI at 28 days. Unit is of monolithic construction at floor and first stage of wall with sectional riser to required depth.

C.I. CASTINGS: Cast iron frames and grates are manufactured of grey cast iron conforming to ASTM A48-76 Class 30, Heavy-Duty AASHTO H-20

A4 GREASE INTERCEPTOR AND SAMPLE WELL DETAIL  
NOT TO SCALE



GREASE INTERCEPTOR SCHEDULE

MODEL NO.	CAPACITY USGal	GREASE CAP. (LBS)	EMPTY WT (LBS)	LENGTH L	WIDTH W	HEIGHT H	INLET FL1	OUTLET FL2
GT-1500	1,500	3,500	16,050	9'-2"	5'-8"	7'-0"	5'-9"	5'-8"

\*REFER TO DETAIL #A2 THIS SHEET FOR SIZE SELECTION

Specifications

CONCRETE : Class 1 concrete with design strength of 4500 PSI at 28 days. Unit is of monolithic construction at floor, first stage of wall and baffle with sectional riser to required depth. (Monolithic baffle required, slide-in type is not acceptable)

REINFORCEMENT: Grade 60 reinforced with steel rebar conforming to ASTM A615 on required centers or equal.

C.I. CASTINGS: Manhole frames, covers or grates are manufactured of grey cast iron conforming to ASTM A48-76 Class 30. Manhole shall be nominal 24 inch diameter and be traffic duty.

Engineering Data

The grease interceptor shall be structurally & hydraulically engineered to conform to regional plumbing codes recommended in most cities. Consult with local authorities for specific application requirements.

Shop drawings shall include complete structural & buoyancy calculations certified by a licensed professional engineer.

Consult with manufacturer for exact excavation dimensions & shipping information.

RELEASE FOR CONSTRUCTION AS NOTED ON PLANS REVIEW DEVELOPMENT SERVICES LEE'S SUMMIT, MISSOURI 12/13/2021

ms

ms consultants, inc.  
engineers, architects, planners  
2221 Schrock Road  
Columbus, Ohio 43229  
p 614.898.7100  
f 614.898.7570  
www.msconsultants.com

WHATABURGER 20-M  
LEE'S SUMMIT

1460 NE DOUGLAS ST  
LEE'S SUMMIT, MO



NOTICE: THIS ARCHITECTURAL AND ENGINEERING DRAWING IS GIVEN IN CONFIDENCE AND SHALL BE USED ONLY PURSUANT TO THE AGREEMENT WITH THE ARCHITECT. NO OTHER USE, DISSEMINATION, OR DUPLICATION MAY BE MADE WITHOUT PRIOR WRITTEN CONSENT OF THE ARCHITECT. ALL COMMON LAW RIGHTS OF COPYRIGHT AND OTHERWISE ARE HEREBY SPECIFICALLY RESERVED.



12/22/20  
PROFESSIONAL OF RECORD:  
JASON E. CHRISTOFF No.20012002143  
EXP DATE: 12/31/20

REV	DESCRIPTION	DATE

Project No.: 62-40497-01  
Client Project No.:

Drawing Title:

PLUMBING DETAILS

Date: 12/22/2020 Phase: BID SET  
Designed: DCU Drawing No.:  
Drawn: DCU  
Checked: KFF

P4.1

## PUMP SCHEDULE

MARK	SERVICE	LOCATION	TYPE	CAPACITY (GPM)	BOOST PRESSURE, PSI (FT HD)	MOTOR, VOLTAGE/PHASE/HP	MOTOR SPEED (RPM)	MANUFACTURER, MODEL
CP-1	DOMESTIC HW	UTILITY ROOM	IN-LINE	1	2	230/1/0.75	VARIABLE	GRUNDFOS ALPHA 2

## WATER HEATER SCHEDULE

MARK	LOCATION	SERVICE	STORAGE (GAL)	RECOVERY RATE @ 80° F RISE (GPH)	OPERATING TEMPERATURE, °F	INPUT (BTU / KW)	POWER VOLTAGE/PHASE	FUEL	MANUFACTURER, MODEL
EWH-1	UTILITY ROOM	DOMESTIC HOT WATER	120	51	140°	10 KW	208 / 3	ELEC	A.O. SMITH DEN 120

## EXPANSION TANK SCHEDULE

MARK	SERVICE	LOCATION	TOTAL TANK VOLUME (GALLONS)	ACCEPTANCE VOLUME (GALLONS)	MAX. PRESSURE (PSIG)	MANUFACTURER, MODEL
ET-1	WATER HEATER	PLUMBING ROOM	8	.	150	ELBI #DTS-30

## MIXING VALVE SCHEDULE

MARK	FLOW (GPM)	LOCATION	DWH TEMP. IN	TEMP OUT (BLEND)	MANUFACTURER, MODEL
TMV-1	0.5-2.2	LAV/SINK	140° F	RE: PLBG FIX SCHED	WATTS #LFMMV-US-M1

## PIPE MATERIALS LEGEND

PIPE SYSTEM	PIPE MATERIAL
DOMESTIC COLD WATER	ASTM B88 COPPER: EXTERIOR (TYPE "K") AND INTERIOR (TYPE "M")
DOMESTIC HOT WATER	ASTM B88 COPPER: EXTERIOR (TYPE "K") AND INTERIOR (TYPE "M")
DOMESTIC HOT WATER RETURN	ASTM B88 COPPER: EXTERIOR (TYPE "K") AND INTERIOR (TYPE "M")
FILTERED WATER	ASTM B88 COPPER: EXTERIOR (TYPE "K") AND INTERIOR (TYPE "M")
SYRUP CHASE	SCHEDULE 40 PVC
SANITARY	SCHEDULE 40 PVC
GREASE	SCHEDULE 40 PVC
VENT	SCHEDULE 40 PVC

## PLUMBING FIXTURE SCHEDULE

MARK	DESCRIPTION	QUANTITY	CONNECTIONS					MANUFACTURER, MODEL
			WASTE	VENT	TRAP	DCW	DHW	
WC-1A	WATER CLOSET (ADA); 1.1 GPF, FLOOR-MOUNT, VITREOUS CHINA WITH EVERCLEAN (ANTI-MICROBIAL) SURFACE, FULLY-GLAZED TRAPWAY, PRESSURE-ASSISTED FLUSH TANK WITH LOCKING COVER.	3	4"	2"	INTEGRAL	3/4"	-	AMERICAN STANDARD "CADET" #3483.001 UNIVERSAL BOWL, #4142.601 LOCKING TANK, #4142.901 FOR RIGHT HAND TRIP
U-1A	URINAL (ADA); 1.25 GPF, WALL-MOUNT, VITREOUS CHINA WITH EVERCLEAN (ANTI-MICROBIAL) SURFACE, FULLY-GLAZED TRAPWAY, EXPOSED HARD-WIRED ELECTRONIC SENSOR/DIAPHRAGM FLUSH VALVE	1	2"	1-1/2"	INTEGRAL	3/4"	-	AMERICAN STANDARD "PINTBROOK" #6002.001, 6063.013.002
L-1A	LAVATORY (ADA); WALL-MOUNTED, CORIAN, METERED, 1.5 GPM @ 15 SEC. CYCLE = 0.25 GAL/CYCLE, HARD-WIRED ELECTRONIC SENSOR FAUCET, PROVIDE WITH TMV-1 SET TO 105°F, AND FIELD INSTALLED SENSOR WITH 15 SEC T/O (P/T #3335116).	2	2"	1-1/2"	1-1/4"	3/4"	3/4"	SLOAN #SDSW-81000 SINK, EAF-900 FAUCET
MS-1	MOP SINK, FLOOR-MOUNTED, 35.13 GPM @ 12" TERRAZO MOP SINK WITH FRONT DROP AND RIM GUARD, WALL SHIELDS, SPRING-LOADED MOP HANGER AND HOSE WALL HOOK	1	3"	2"	3"	3/4"	3/4"	STERN WILLIAMS "HELLOW" #2000, T-10-VB, T-35, T-40-BP
IMB-1	ICE MAKER BOX; WHITE POWDER COATED GALVANIZED STEEL WITH QUARTER TURN VALVE AND MINI ARRESTER.	-	-	-	-	3/4"	-	GUY GREY #MIB1HAAB
IMB-2	ICE MAKER BOX; WHITE POWDER COATED GALVANIZED STEEL WITH QUARTER TURN VALVE AND MINI ARRESTER. COORDINATE FINAL LOCATION WITH ARCHITECT. PROVIDE DUAL CHECK VALVE (BFP-2) IN-LINE FOR CONNECTION TO COFFEE MAKER.	-	-	-	-	3/4"	-	GUY GREY #MIB1HAAB, WATTS #SD2
SK-1	HAND SINK; STAINLESS STEEL, PROVIDE WITH TMV-1 SET TO 105°F	4	2"	1-1/2"	1-1/4"	3/4"	3/4"	SINK SUPPLIED BY KITCHEN EQUIPMENT MANUFACTURER, T&S BRASS #B-1115 FAUCET SUPPLIED BY CONTRACTOR
SK-2	1 COMPARTMENT SINK; STAINLESS STEEL, PROVIDE WITH TMV-1 SET TO 110°F	1	3"	2"	-	3/4"	3/4"	SINK SUPPLIED BY KITCHEN EQUIPMENT MANUFACTURER, T&S BRASS #B-023-OR FAUCET SUPPLIED BY WHATABURGER
SK-3	3 COMPARTMENT SINK; STAINLESS STEEL, PROVIDE WITH TMV-1 SET TO 110°F	1	3"	2"	-	3/4"	3/4"	SINK SUPPLIED BY KITCHEN EQUIPMENT MANUFACTURER, T&S BRASS #B-0156-OR FAUCET SUPPLIED BY WHATABURGER
WF-1	WALL FAUCET;	1	-	-	-	3/4"	3/4"	FOR SHAKE MACHINE BY CONTRACTOR, T&S BRASS #B-0231-CR WITH #000J STOPS

GENERAL NOTES (PLUMBING FIXTURE SCHEDULE):

1. PLUMBER IS REQUIRED TO REGISTER ATTACHED WARRANTY REGISTRATION CARD FOLLOWING INSTALLATION CHECKOUT.
2. PLUMBER IS REQUIRED TO ROUTE INDIVIDUAL COPPER DRAIN LINES FROM EACH SINK BASIN AND DISCHARGE INDIRECTLY TO FLOOR SINK WITH CODE APPROVED AIR GAP.
3. FURNISH AND INSTALL WATTS SERIES 8 VACUUM BREAKER ON ALL THREADED FAUCETS AND HOSE BIBBS SERVING CLEANING AND UTILITY USES.

## FLOOR DRAIN/SINK SCHEDULE

MARK	DESCRIPTION	SERVICE	GRATE DIMENSION	OUTLET DIAMETER	MANUFACTURER, MODEL
FD-1	FLOOR DRAIN; COATED CAST-IRON BODY WITH BOTTOM OUTLET, CLAMPING COLLAR, ADJUSTABLE COLLAR WITH SEEPAGE SLOTS, AND POLISHED NICKEL-BRONZE. HEAVY-DUTY SQUARE HEEL-PROOF GRATE WITH VANDAL-RESISTANT SCREWS.	RESTROOMS, GEN. SERVICE	8x6"	*	ZURN ZN415-6S-HD
FS-1	FLOOR SINK; 6" DEEP CAST-IRON BODY, MEDIUM-DUTY SLOTTED 1/2 GRATE, ANCHOR FLANGE, SEEPAGE HOLES, CLAMPING COLLAR, ANTI-SPLASH DOME STRAINER, WHITE ACID RESISTING PORCELAIN ENAMEL FINISH ON INTERIOR, GRATE, AND STRAINER.	KITCHEN, EQUIPMENT	8x6"	*	ZURN Z-1910-KC-233
FS-2	FLOOR SINK; ACID-RESISTANT EPOXY COATED CAST-IRON BODY WITH BOTTOM OUTLET, ANCHOR FLANGE, SECONDARY DOME STRAINER, TRAP SEAL PRIMER TAPPING, AND 1/2 TRACTOR GRATE.	FIRE RISER, CONDENSATE	12x12"	*	MIFAB F1480-7-11-20-FL-150

GENERAL NOTES (FLOOR DRAIN/SINK SCHEDULE):

1. REFER TO SPECIFICATIONS FOR ADDITIONAL REQUIREMENTS.
  2. ALL FLOOR DRAINS SHALL INCLUDE AN ANCHORING FLANGE.
  3. INSULATE BODY, TAILPIECE AND P-TRAP OF ALL FLOOR DRAINS SERVING HVAC EQUIPMENT.
  4. PROVIDE BARRIER TYPE TRAP SEAL PROTECTION EQUAL TO RECTORSEAL "SURESEAL" ON ALL FLOOR DRAINS/SINKS
- \* REFER TO FLOOR PLAN FOR PIPE SIZE.

## HYDRANT / HOSE BIBB SCHEDULE

MARK	DESCRIPTION	MANUFACTURER, MODEL
WH-1	WALL HYDRANT, NON-FREEZE ENCLOSED TYPE WITH FACEPLATE, AUTOMATIC DRAINING, ANTI-SIPHON VACUUM BREAKER, 3/4" THREADED INLETS, AND LOOSE TEE OPERATING KEY.	WOODFORD B65-CH
RH-1	ROOF HYDRANT, NON-FREEZE PEDESTAL TYPE, AUTOMATIC DRAINING, ANTI-SIPHON VACUUM BREAKER, 3/4" THREADED INLETS, AND LOOSE TEE OPERATING KEY.	WOODFORD RH24MS

## BACKFLOW PREVENTER SCHEDULE

MARK	DESCRIPTION	SIZE	LOCATION/SERVICE	MANUFACTURER, MODEL
BFP-1	DUAL CHECK VALVE BACKFLOW PREVENTER WITH VACUUM BREAKER, RELIEF VENT, AND Y-STRAINER	1/2"	ICE MAKERS	WATTS #007
BFP-2	DUAL CHECK VALVE BACKFLOW PREVENTER	1/2"	COFFEE MAKERS	WATTS #SD2

**RELEASE FOR  
CONSTRUCTION  
AS NOTED ON PLANS REVIEW  
DEVELOPMENT SERVICES  
LEE'S SUMMIT, MISSOURI**

**04/13/2021**



**ms consultants, inc.**  
engineers, architects, planners  
2221 Schrock Road  
Columbus, Ohio 43229  
p 614.898.7100  
f 614.898.7570  
[www.msconsultants.com](http://www.msconsultants.com)

# WHAT A BURGER 20-M LEE'S SUMMIT

1460 NE DOUGLAS ST  
LEE'S SUMMIT, MO



NOTICE: THIS ARCHITECTURAL AND ENGINEERING  
DRAWING IS GIVEN IN CONFIDENCE AND SHALL BE USED  
ONLY PURSUANT TO THE AGREEMENT WITH THE  
ARCHITECT. NO OTHER USE, DISSEMINATION, OR  
DUPLICATION MAY BE MADE WITHOUT PRIOR WRITTEN  
CONSENT OF THE ARCHITECT. ALL COMMON LAW RIGHTS  
OF COPYRIGHT AND OTHERWISE ARE HEREBY  
SPECIFICALLY RESERVED.



12/22/20  
PROFESSIONAL OF RECORD:  
JASON E. CHRISTOFF No.20012002143  
EXP DATE: 12/31/20

REV	DESCRIPTION	DATE
1	REV-1 Plan Review	01/27/21

Project No.: 62-40497-01

Client Project No.:

Drawing Title:

## PLUMBING SCHEDULES

Date: 12/22/2020

Phase: BID SET

Designed: DCU

Drawing No.:

Drawn : DCU

Checked: KFF

## P5.1