

The map displays the project area in Lee's Summit, MO. The project is bounded by a red line that starts at the intersection of NE Tudor Rd and NW Missouri Rd (labeled 'PROJECT BEGIN') and ends at the intersection of NE Tudor Rd and NE Mulberry St (labeled 'PROJECT END'). The map includes various landmarks such as Saint Luke's East Hospital, B&B Theatres Lee's Summit 16, Panera Bread, Ginger Sue's, Plato's Closet - Lee's Summit, MO, Starbucks, Schlotzsky's, Walmart Supercenter, and Lee's Summit North High School. The map is divided into sheets numbered 3 through 16.

## CONTACT INFO

JESSICA LYNN  
CONSTRUCTION TECHNICIAN - MO  
816-490-1535  
JESSICA.LYNN@UPNFIBER.COM

<u>WORK PLAN INDEX</u>	
SHEET	DESCRIPTION
1	COVER SHEET
2	GENERAL NOTES/LEGEND
3-15	DESIGN PLAN SHEETS
16	DETAIL SHEET
17	TYPICAL DETAILS
18	PROJECT PHOTOS
19	FINAL QUANTITIES



PE Stamp &amp; Approval

[illegible]

COVER SHEET	
NE ST LUKE'S BLVD	
LEE'S SUMMIT, MO	2021

Drawn by: JAW  
Checked by: DAH  
Approved by: CRG  
Project no.: 27642  
Drawing no.: UPN-16  
Date: 4/5/2021

SHEET  
OF 19



Know what's below.  
Call before you dig.



NOT TO SCALE

### LEGEND—KEY

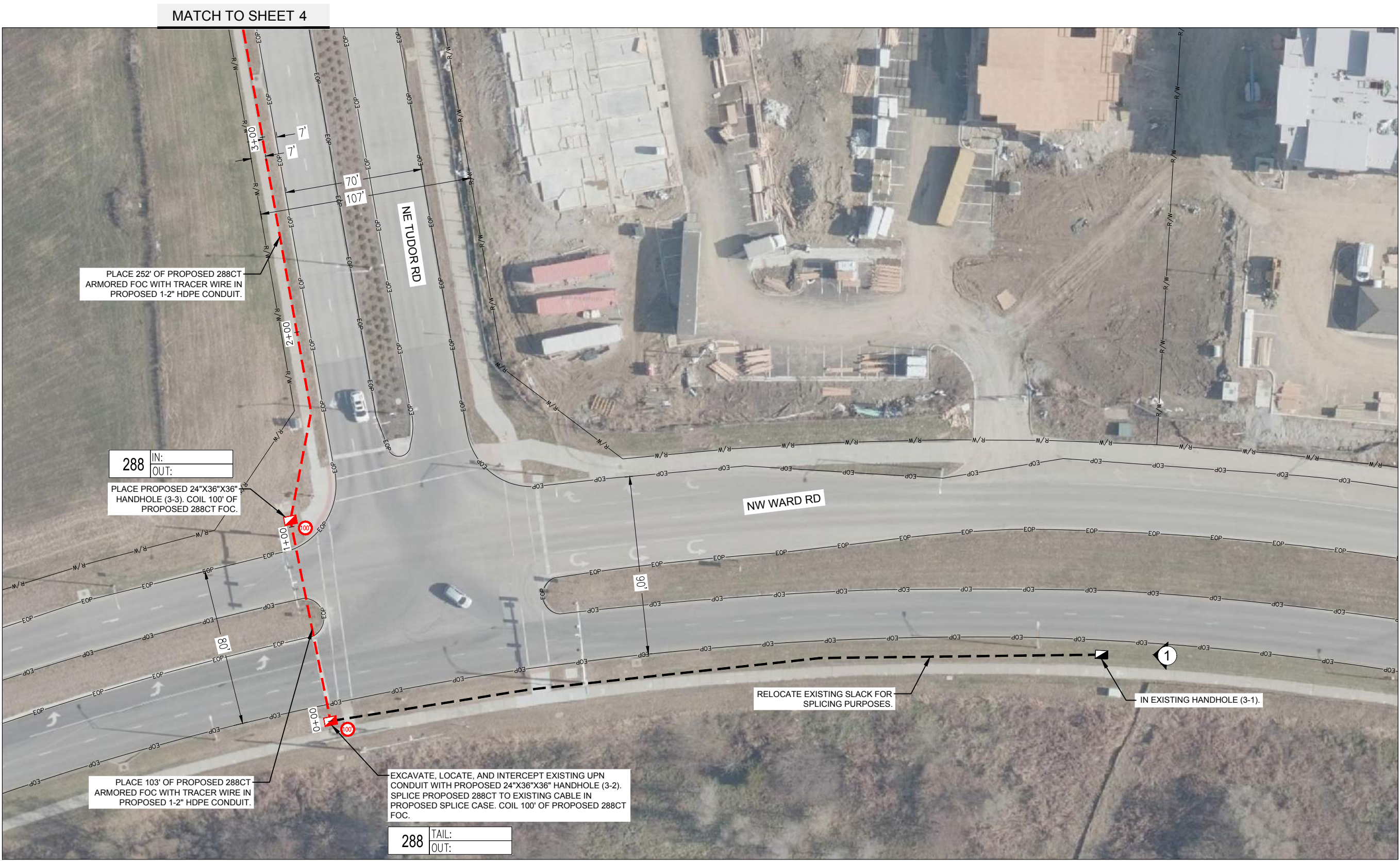
	UTILITY POLE		GAS
	UTILITY MANHOLE		WATER
	UTILITY HANDHOLE		TELEPHONE
	TELEPHONE PED – CROSS BOX		ELECTRIC
	EXISTING MANHOLE		SANITARY SEWER (SEW)
	EXISTING HANDHOLE		STORM SEWER
	EXISTING COIL		FENCE
	EXISTING AERIAL COIL		CABLE TV
	EXISTING DOWN GUY		STEAM
	EXISTING SPLICE POINT		OIL
	TREE		UNKNOWN UTILITY
	PROPOSED MANHOLE		RIGHT OF WAY
	PROPOSED HANDHOLE		EDGE OF PAVEMENT
	PROPOSED COIL		EXISTING CONDUIT
	PROPOSED AERIAL COIL		EXISTING AERIAL FIBER
	PROPOSED DOWN GUY		EXISTING STRAND
	PROPOSED SPLICE POINT		PROPOSED CONDUIT
	PROPOSED FIBER DISTRIBUTION PANEL		PROPOSED AERIAL FIBER
	PROPOSED BORE PIT		PROPOSED STRAND
	PROPOSED PULL BOX		
R/L	PROPOSED RUNNING LINE		
F/L	FLOW LINE		
FOC	FIBER OPTIC CABLE		
EOP	EDGE OF PAVEMENT		
	CUT & RESTORE CONC./ASPH.		
	INLET		
	INLET GRATE		

1. CONTRACTOR MUST OBTAIN LOCATES PRIOR TO ANY TYPE OF EXCAVATION.
2. CONTRACTOR IS RESPONSIBLE FOR OBTAINING THE NECESSARY REQUIRED PERMITS PERTAINING TO ALL ASPECTS OF THE PROJECT AND MUST HAVE THE APPROPRIATE PERMITS AT THE JOB SITE.
3. ALL CABLE WILL BE PLACED AT STANDARD MINIMUM DEPTH OF 36" IN UNPAVED AREAS AND 48" MINIMUM BELOW STREETS AT ALL TIMES, UNLESS OTHERWISE NOTED IN THE PLANS.
4. ANY LANDSCAPING WILL BE REPLACED TO EQUAL OR BETTER THAN THAT WHICH EXISTED PRIOR TO WORK.
5. PROJECT SITE WILL BE PROPERLY SECURED PRIOR TO THE END OF EACH DAY.
6. ALL WORK IS TO BE IN ACCORDANCE WITH AUTHORITIES HAVING JURISDICTION IN THE WORK ZONE.
7. CONTRACTORS ARE ADVISED TO CONTACT UPN FOR ANY ADDITIONAL INFORMATION OR CLARIFICATION CONCERNING SCOPE OF WORK OR THE REQUIREMENTS NECESSARY FOR PROJECT COMPLETION.
8. ANY FIELD ADJUSTMENTS TO THE PROPOSED PLAN MUST BE APPROVED BY AN APPROPRIATE UPN REPRESENTATIVE.
9. BEFORE CONSTRUCTION BEGINS, CONTRACTOR SHALL TAKE THE APPROPRIATE PRECAUTIONS TO AVOID ANY POTENTIAL OBSTRUCTIONS PRIOR TO PROCEEDING WITH WORK.
10. OLSSON ASSUMES NO RESPONSIBILITY FOR EXISTING UTILITY LOCATIONS (HORIZONTAL OR VERTICAL) OR RIGHT-OF-WAY LOCATION. THE EXISTING UTILITIES AND RIGHT-OF-WAY SHOWN ON THESE PLANS HAVE BEEN PLOTTED FROM THE BEST INFORMATION AVAILABLE. IT IS HOWEVER , THE RESPONSIBILITY OF THE CONTRACTOR TO FIELD VERIFY THE LOCATION OF ALL UTILITIES AND RIGHT-OF-WAY PRIOR TO COMMENCEMENT OF ANY CONSTRUCTION.





DWG: F:\PROJECTS\013-23920-B\40-Design\AutoCAD\Final Plans\Sheets\TLCM\UNITE-16 Digestive Health\Final Plans\16 NE St Lukes Blvd\UPN-16 NE St Lukes Blvd\_FINAL.dwg  
DATE: Apr 05, 2021 12:29pm XREFS: UPN-16 NE St Lukes Blvd\_BASE USER: jware



PLACE 252' OF PROPOSED 288CT ARMORED FOC WITH TRACER WIRE IN PROPOSED 1-2" HDPE CONDUIT.

288 IN: OUT: PLACE PROPOSED 24"X36"X36" HANDHOLE (3-3). COIL 100' OF PROPOSED 288CT FOC.

PLACE 103' OF PROPOSED 288CT ARMORED FOC WITH TRACER WIRE IN PROPOSED 1-2" HDPE CONDUIT.

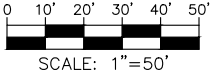
EXCAVATE, LOCATE, AND INTERCEPT EXISTING UPN CONDUIT WITH PROPOSED 24"X36"X36" HANDHOLE (3-2). SPLICE PROPOSED 288CT TO EXISTING CABLE IN PROPOSED SPLICE CASE. COIL 100' OF PROPOSED 288CT FOC.

RELOCATE EXISTING SLACK FOR SPLICING PURPOSES.

IN EXISTING HANDHOLE (3-1).



SYMBOL CORRESPONDS TO PHOTO LOCATIONS AND ORIENTATION. SEE SHEET 18 FOR SITE PHOTOGRAPHS.



7301 West 133rd Street, Suite 200  
Overland Park, KS 66213-4750  
TEL 913.381.1170  
FAX 913.381.1174  
www.olson.com

PROJECT SHEET	16 NE ST LUKE'S BLVD	LEE'S SUMMIT, MO	2021	REVISIONS	
				REV. NO.	DATE
				REVISIONS DESCRIPTION	
PE Stamp & Approval					

drawn by: JAW  
checked by: DAH  
approved by: CRG  
project no.: 27642  
drawing no.: UPN-16  
date: 4/5/2021

SHEET  
3 OF 19







DWG: F:\PROJECTS\

MATCH TO SHEET 4



**MATCH TO SHEET 6**

PE Stamp & Approval

[illegible]

PROJECT SHEET

16 NE ST LUKE'S BLVD

LEE'S SUMMIT, MO

2021

drawn by: JAL  
checked by: DA  
approved by: CR  
project no.: 2764  
drawing no.: UPN-1  
date: 4/5/202

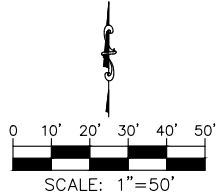
SHEET  
5 OF 19



SYMBOL CORRESPONDS TO PHOTO LOCATIONS AND ORIENTATION. SEE SHEET 18 FOR SITE PHOTOGRAPHS.



Know what's below.  
Call before you dig.



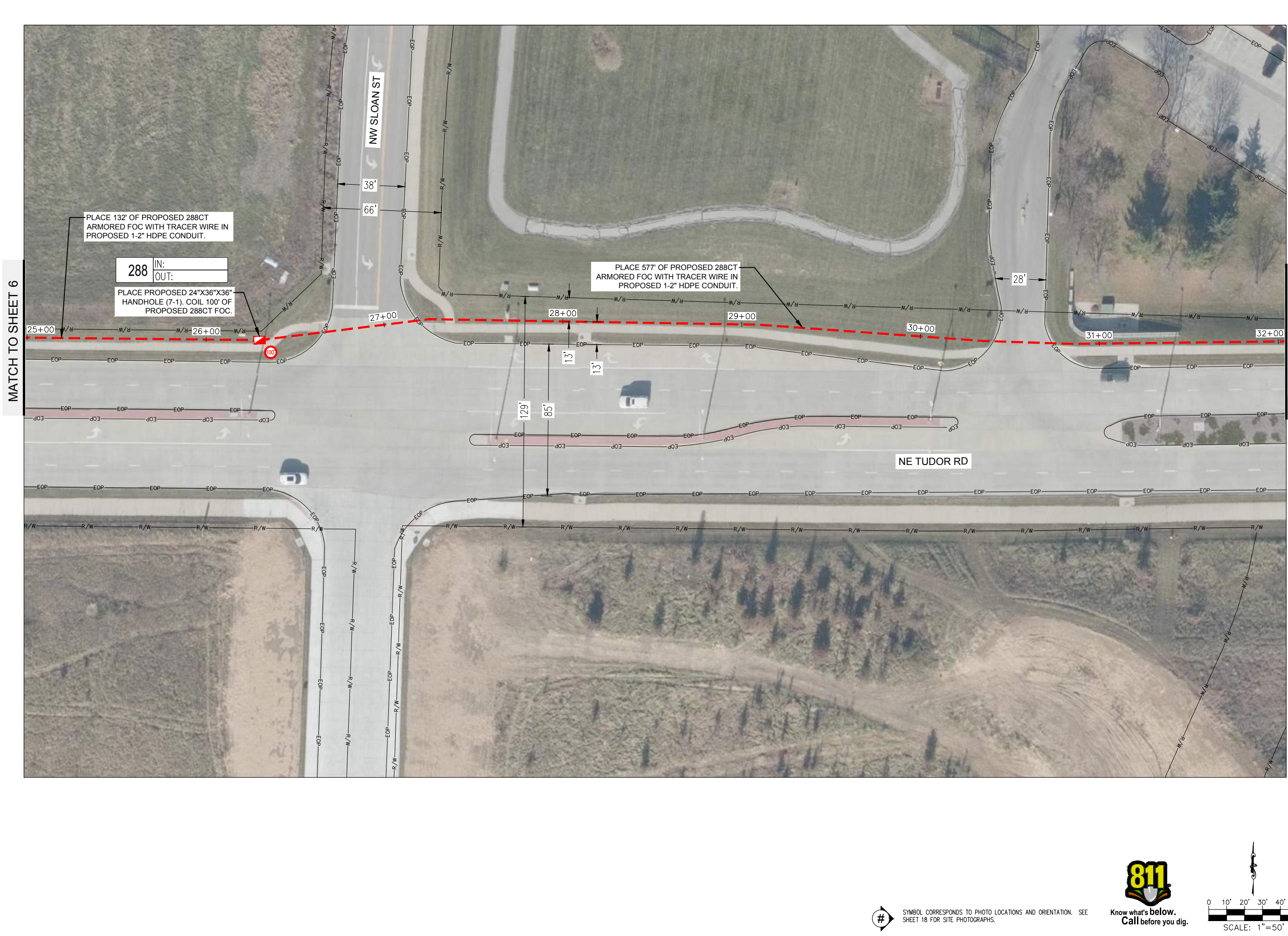
also

7301 West 133rd Street, Suite 200  
Overland Park, KS 66213-4750  
TEL 913.381.1170  
FAX 913.381.1174  
[www.olsson.com](http://www.olsson.com)







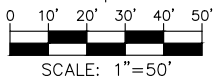


MATCH TO SHEET 6

MATCH TO SHEET 8



SYMBOL CORRESPONDS TO PHOTO LOCATIONS AND ORIENTATION. SEE SHEET 18 FOR SITE PHOTOGRAPHS.



PROJECT SHEET

16 NE ST LUKE'S BLVD

LEE'S SUMMIT, MO

2021

drawn by: JAW  
checked by: DAH  
approved by: CRG  
project no.: 27642  
drawing no.: UPN-16  
date: 4/5/2021

SHEET

7 OF 19

PE Stamp & Approval

REVISIONS

REV. NO.	DATE	REVISIONS DESCRIPTION

olsson

7301 West 133rd Street, Suite 200  
Overland Park, KS 66214-4750  
TEL 913.381.1170  
FAX 913.381.1174  
www.olsson.com

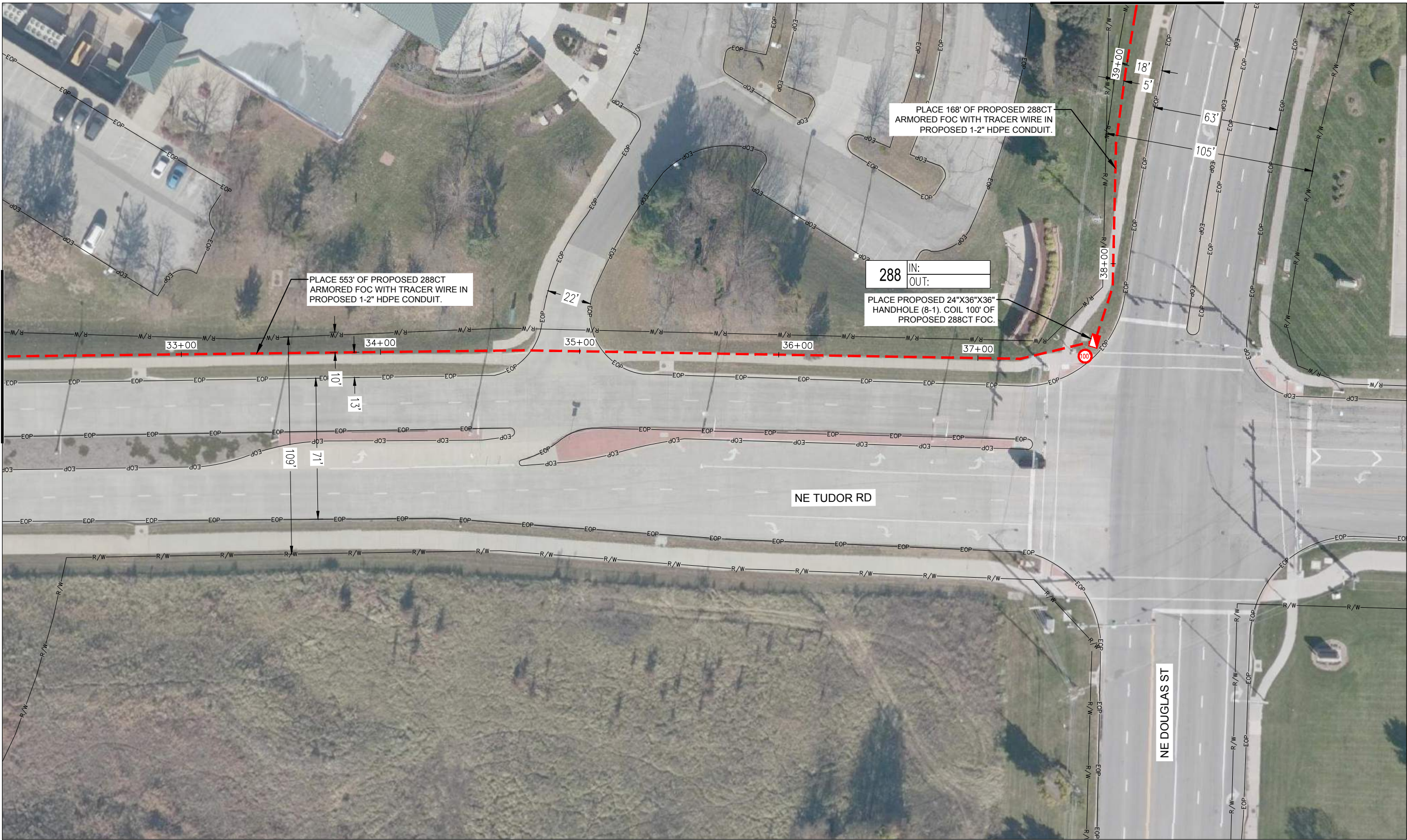
Unite

PRIVATE NETWORKS



DWG: F:\PROJECTS\013-23920-B\40-Design\AutoCAD\Final Plans\Sheets\TLCM

MATCH TO SHEET 7



MATCH TO SHEET 9

PLACE 168' OF PROPOSED 288CT  
ARMORED FOC WITH TRACER WIRE IN  
PROPOSED 1-2" HDPE CONDUIT.

288	IN:
	OUT:

PLACE PROPOSED 24"X36"X36"  
HANDHOLE (8-1). COIL 100' OF  
PROPOSED 288CT FLOW

NE TUDOR RD

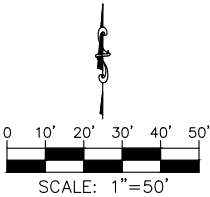
NE DOUGLAS ST



SYMBOL CORRESPONDS TO PHOTO LOCATIONS AND ORIENTATION. SEE SHEET 18 FOR SITE PHOTOGRAPHS.



Know what's below.  
**Call** before you dig.



PROJECT SHEET

16 NE ST LUKE'S BLVD

LEE'S SUMMIT, MO

2021

REVISIONS DESCRIPTION

DATE \_\_\_\_\_

REV.

REVISIONS DESCRIPTION

DATE \_\_\_\_\_

REV.

## REVISIONS

PE Stamp &amp; Approval



oslo

7301 West 133rd Street, Suite 200  
Overland Park KS 66213-4750  
TEL 913.381.1170  
FAX 913.381.1174  
www.olsen.com

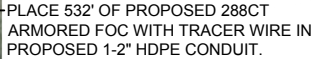
drawn by: JAW  
checked by: DAH  
approved by: CRG  
project no.: 27642  
drawing no.: UPN-16  
date: 4/5/2021

SHEET  
8 OF 19



DWG: F:\PROJECTS\013-23920-B\40-Design\AutoCAD\Final Plans\Sheets\TLCM

MATCH TO SHEET 8



MATCH TO SHEET 10

PROJECT SHEET

16 NE ST LUKE'S BLVD

LEE'S SUMMIT, MO

2021

## DEVISIONS

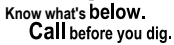
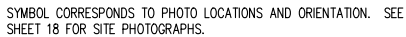
[illegible]

PE Stamp &amp; Approval



also

7301 West 133rd Street, Suite 200  
Overland Park KS 66213-4750  
TEL 913.381.1170  
FAX 913.381.1174  
[www.ollson.com](http://www.ollson.com)

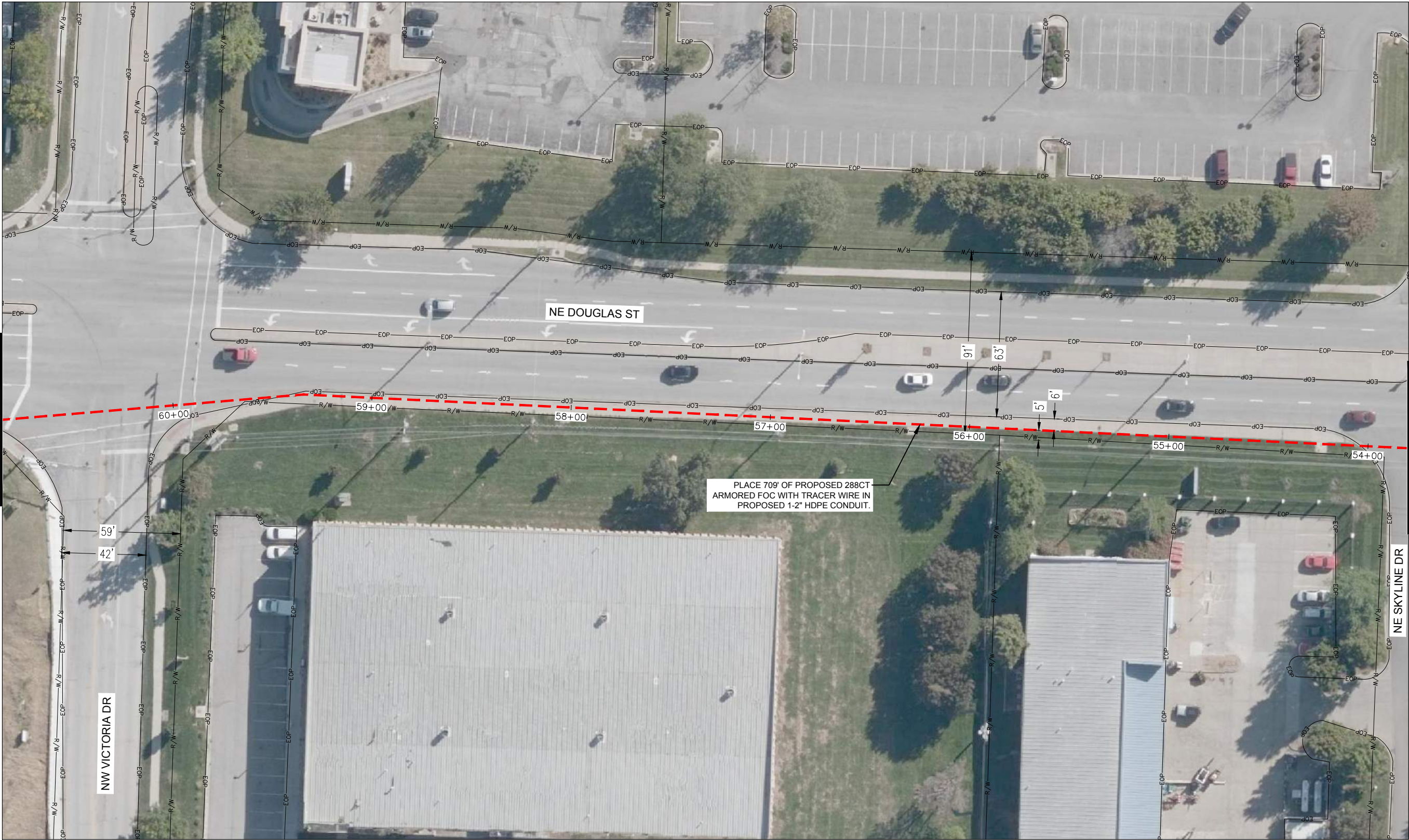








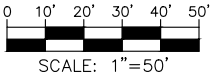
MATCH TO SHEET 12



MATCH TO SHEET 10



SYMBOL CORRESPONDS TO PHOTO LOCATIONS AND ORIENTATION. SEE SHEET 18 FOR SITE PHOTOGRAPHS.



PROJECT SHEET		REV.	NO.	DATE	REVISIONS DESCRIPTION
16 NE ST LUKE'S BLVD					
LEE'S SUMMIT, MO		2021		REVISIONS	

drawn by: JAW  
checked by: DAH  
approved by: CRG  
project no.: 27642  
drawing no.: UPN-16  
date: 4/5/2021



olsson



DWG: F:\PROC

ET 13



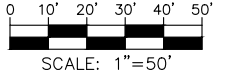
NOTE: COUNTY GIS APPEARS INACCURATE IN THIS AREA. CONTRACTOR TO VERIFY RIGHT OF WAY PRIOR TO CONSTRUCTION.



SYMBOL CORRESPONDS TO PHOTO LOCATIONS AND ORIENTATION. SEE SHEET 18 FOR SITE PHOTOGRAPHS.



Know what's below.  
Call before you dig.



olson



E Stamp &amp; Approval

[illegible]

PROJECT TITLE

16 NE ST LUKE'S BLVD

LEE'S SUMMIT, MO

Drawn by: JAW  
 Checked by: DAH  
 Approved by: CRG  
 Project no.: 27642  
 Drawing no.: UPN-16  
 Date: 4/5/2021

SHEET  
2 OF 19





MATCH TO SHEET 14

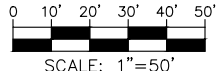
**MATCH TO SHEET 12**



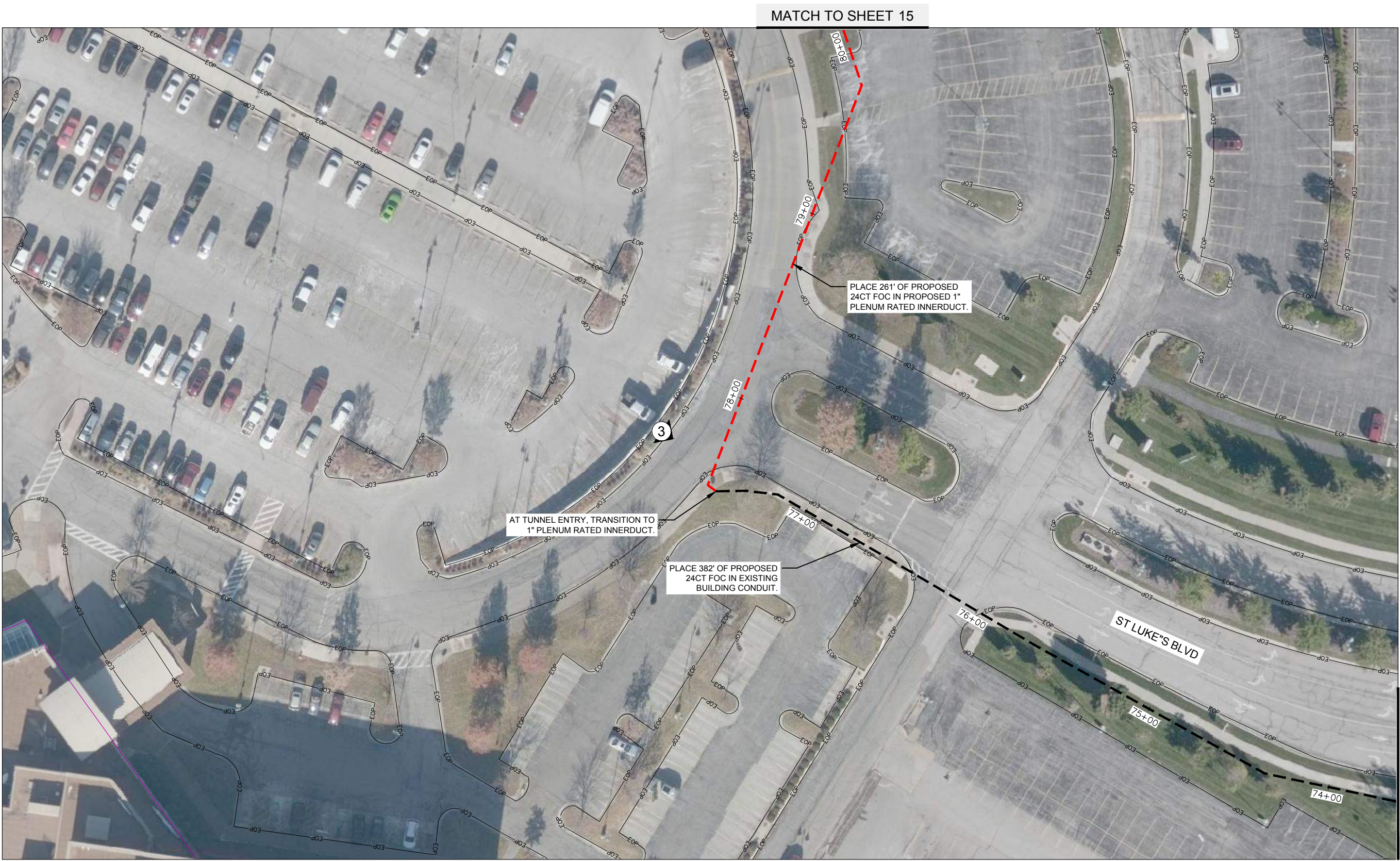
SYMBOL CORRESPONDS TO PHOTO LOCATIONS AND ORIENTATION. SEE SHEET 18 FOR SITE PHOTOGRAPHS.



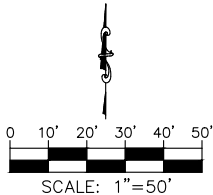
Know what's **below**.  
**Call** before you dig.







SYMBOL CORRESPONDS TO PHOTO LOCATIONS AND ORIENTATION. SEE SHEET 18 FOR SITE PHOTOGRAPHS.



drawn by: JAW  
checked by: DAH  
approved by: CRG  
project no.: 27642  
drawing no.: UPN-16  
date: 4/5/2021



PE Stamp & Approval

REV. NO.	DATE	REVISIONS DESCRIPTION

REVISIONS

PROJECT SHEET

16 NE ST LUKE'S BLVD

LEE'S SUMMIT, MO

2021

olsson

7301 West 133rd Street, Suite 200  
Overland Park, KS 66213-4750  
TEL 913.381.1170  
FAX 913.381.1174  
www.olsson.com

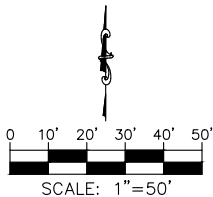




MATCH TO SHEET 14



SYMBOL CORRESPONDS TO PHOTO LOCATIONS AND ORIENTATION. SEE SHEET 18 FOR SITE PHOTOGRAPHS.



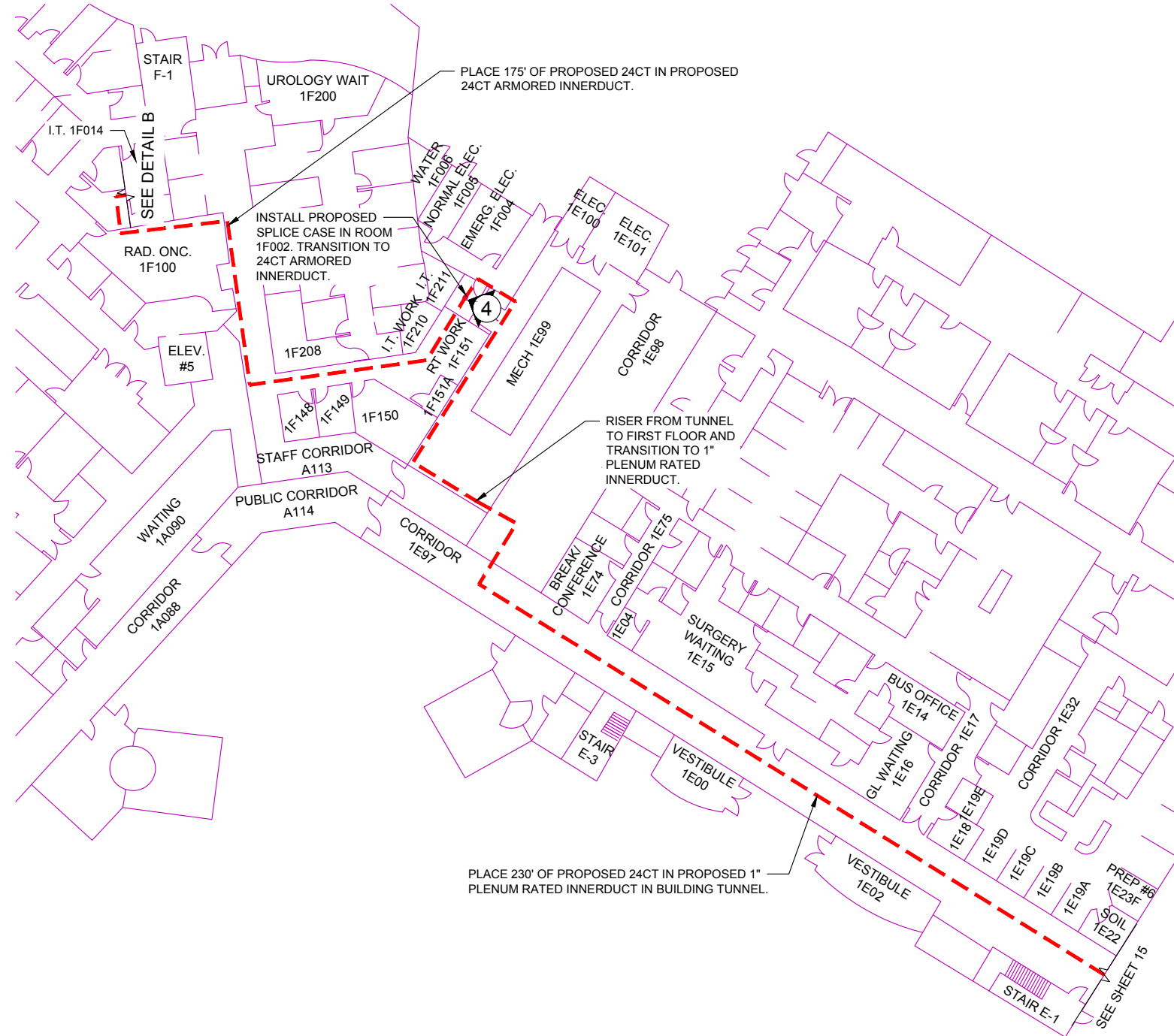
drawn by: JAW  
checked by: DAH  
approved by: CRG  
project no.: 27642  
drawing no.: UPN-16  
date: 4/5/2021

REV. NO.	DATE	REVISIONS DESCRIPTION

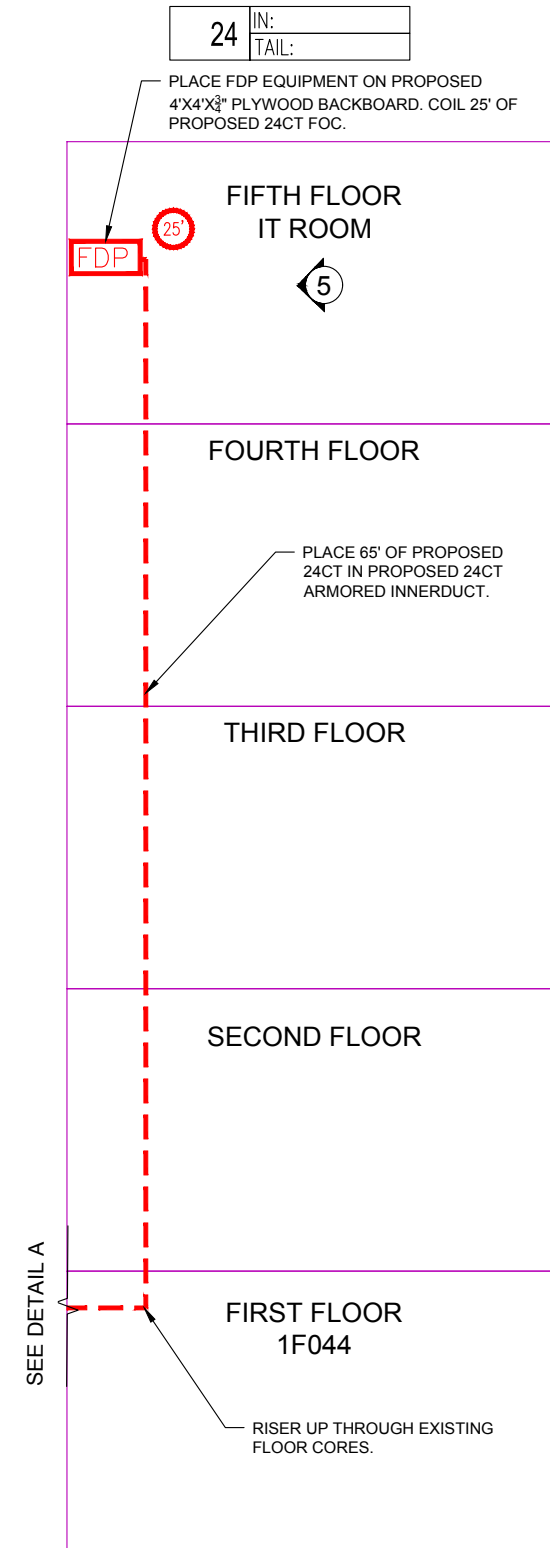




## DETAILS



DETAIL A (ISP PLAN)  
FIRST FLOOR  
NTS



DETAIL B (ISP PLAN)  
SIDE VIEW  
NTS

24	IN:
	TAIL:

— PLACE FDP EQUIPMENT ON PROPOSED 4'X4'X $\frac{3}{4}$ " PLYWOOD BACKBOARD. COIL 25' OF PROPOSED 24CT FOC.

FIFTH FLOOR  
IT ROOM

FOURTH FLOOR

— PLACE 65' OF PROPOSED  
24CT IN PROPOSED 24CT  
ARMORED INNERDUCT.

THIRD FLOOR

## SECOND FLOOR

FIRST FLOOR  
1F044

- RISER UP THROUGH EXISTING FLOOR CORES.



SYMBOL CORRESPONDS TO PHOTO LOCATIONS AND ORIENTATION. SEE SHEET 18 FOR SITE PHOTOGRAPHS.



Know what's **below**.  
**Call** before you dig.

olson



PE Stamp &amp; Approval

[illegible]

DETAIL SHEET

16 NE ST LUKE'S BLVD

LEE'S SUMMIT, MO

REVISIONS

2021

drawn by:	JAW
checked by:	DAH
approved by:	CRG
project no.:	27642
drawing no.:	UPN-16
date:	4/5/2021

SHEET  
16 OF 19

7301 West 133rd Street, Suite 200  
Overland Park, KS 66213-4750  
TEL 913.381.1170  
FAX 913.381.1174  
[www.olsson.com](http://www.olsson.com)



# TYPICALS

# PCA243636-00006

## PCX POLYMER CONCRETE ASSEMBLY

24" x 36" x 36"  
(For actual dimensions see drawing)

Polymer Concrete Assembly, Straight Sides, No Floor, WUC 3.6, ANSI/SCTE 77 - "T15/20K" 3/8" Hex Bolts, Standard Nameplate (Specify at time of order) Installed

### LOAD RATINGS

Incidental Traffic - Parking Lot, Sidewalk  
Conforms to:

- WUC 3.6
- ASTM C 857
- ANSI/SCTE 77

### FEATURES:

- Drop-in nameplate
- Shipped assembled
- Skid resistant cover
- Stainless steel bolts
- Cast-in floating nut box
- Integral drain holes

**Additional product information  
continued on the reverse**

**newbasis**  
Composites for Infrastructure

2626 Kansas Avenue  
Riverside, California 92507

951.787.0600

951.787.0632 (fax)



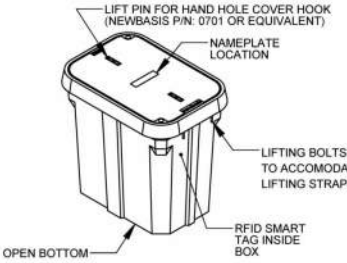
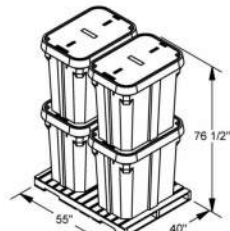
info@newbasis.com

newbasis.com

### Inside Dimensions

Length	Width	Depth
33 9/16"	21 15/16"	33"
27 1/8"	15 1/2"	

Rev: C.0

<h1>PCA243636-00006</h1>	<h1>PCX POLYMER CONCRETE ASSEMBLY</h1>	<div>   </div>
<p>Polymer Concrete Assembly, Straight Sides, No Floor, WUC 3.6, ANSI/SCTE 77 - "T15/20K," 3/8" Hex Bolts, Standard Nameplate (Specify at time of order) Installed</p>		<p><b>24" x 36" x 36"</b> For actual dimensions, see drawing on front side.</p>
<p><b>AVAILABLE OPTIONS</b></p> <ul style="list-style-type: none"> <li><input type="checkbox"/> Tier 22 Load Rating</li> <li><input type="checkbox"/> Penta Bolts</li> <li><input type="checkbox"/> Telephone EMS</li> <li><input type="checkbox"/> Power EMS</li> <li><input type="checkbox"/> Custom Nameplate Installed</li> <li><input type="checkbox"/> Custom Nameplate Shipped Separately</li> <li><input type="checkbox"/> Standard Nameplate Installed</li> <li><input type="checkbox"/> Standard Nameplate Shipped Separately</li> </ul>	<p><b>NAMEPLATES</b></p> <p>One standard nameplate included with each assembly, installed at the factory or easily installed in the field. Custom nameplates are available. Contact customer service.</p> <p><b>Standard Nameplates</b></p> <ul style="list-style-type: none"> <li>• Electric</li> <li>• Telephone</li> <li>• Fiber Optic</li> <li>• Water</li> <li>• Street Lighting</li> <li>• Broadband</li> <li>• Traffic</li> <li>• CATV</li> <li>• Traffic Signal</li> <li>• Communications</li> </ul>	 <p>LIFT PIN FOR HAND HOLE COVER HOOK (NEWBASIS P/N: 0701 OR EQUIVALENT)</p> <p>NAMEPLATE LOCATION</p> <p>LIFTING BOLTS TO ACCOMMODATE LIFTING STRAPS</p> <p>RFID SMART TAG INSIDE BOX</p> <p>OPEN BOTTOM</p>
<p>☒ - Indicates a selected option</p>		
<p><b>MATERIAL PROPERTIES AND ATTRIBUTES</b></p> <p><b>Compressive Strength</b> Polymer Concrete - 11500 PSI Per ASTM D695</p> <p><b>Flexural Strength</b> Polymer Concrete - 4000 PSI Per ASTM D790</p> <p><b>Coefficient of Friction (Dry)</b> 1.085 Per ASTM C1028</p> <p>Polymer Concrete</p> <ul style="list-style-type: none"> <li>- Advanced composite: Very high strength to weight ratio</li> <li>- Non-metallic</li> <li>- Non-conductive</li> <li>- UV Resistant</li> <li>- High impact resistant</li> <li>- Impervious to chemicals and moisture</li> </ul> <p>Materials tested in accordance with ASTM D-543 and ASTM D-570</p>	<p><b>WEIGHTS AND SHIPPING</b></p> <p>COVER WEIGHT: 98.0 lbs.</p> <p>BOX WEIGHT: 239.9 lbs.</p> <p>ASSEMBLY WEIGHT: 337.9 lbs.</p> <p>LOADED PALLET WEIGHT: 1394 lbs.</p> <p>Standard shipping includes van delivery of pallet quantities to the lower 48 states. Partial pallet quantities and flat bed shipping available at an additional cost.</p>	<p><b>PACKAGING</b> (Steel Banding, Edge Protection)</p> <p>PALLET QUANTITY: 4</p>  <p>76 1/2"</p> <p>55"</p> <p>40"</p>
		<p>Rev. C.0</p>



# SITE PHOTOGRAPHS



EXISTING HANDHOLE 



PROPOSED HANDHOLE 



PROPOSED PATH 



PROPOSED PATH 



FDP LOCATION  5  
16



PE Stamp &amp; Approval

[illegible]

## PROJECT PHOTOS

16 NE ST LUKE'S BLVD

LEE'S SUMMIT, MO

## REVISIONS

2021

by:	JAW
ed by:	DAH
oved by:	CRG
ct no.:	27642
ing no.:	UPN-16
	4/5/2021

SHEET  
OF 19

**olsson**

7301 West 133rd Street, Suite 200  
Overland Park, KS 66213-4750

TEL 913.381.1170  
FAX 913.381.1174 [www.olsson.com](http://www.olsson.com)



Know what's **below**.  
**Call** before you dig.



DWG: F:\PROJECTS\013-23920-B\40-Design\AutoCAD\Final Plans\Sheets\TLCM\UNITE-16 Digestive Health\Final Plans\16 NE St Lukes Blvd\UPN-16\_16 NE St Lukes Blvd\_FINAL.dwg  
DATE: Apr 05, 2021 12:29pm XREFS: UPN-16\_16 NE St Lukes Blvd\_BASE  
USER: jware

TOTAL QUANTITIES			
ITEM	ITEM DESCRIPTION	UNITS	QUANTITY
1.	ROD & PROOF EXISTING DUCT	LF	1610
2.	SUPPLY & INSTALL 1-2" HDPE DUCT	LF	6134
3.	SUPPLY & INSTALL 2-2" HDPE DUCT	LF	
4.	SUPPLY & INSTALL 1-1.25" HDPE DUCT	LF	
5.	SUPPLY & INSTALL 2" PVC DUCT	LF	
6.	SUPPLY & INSTALL 4" PVC DUCT	LF	
7.	SUPPLY & INSTALL 2" RIGID STEEL ON A STRUCTURE	LF	
8.	SUPPLY & INSTALL 3-CELL MAXCELL	LF	
9.	SUPPLY & INSTALL TRACER WIRE	LF	6134
10.	SUPPLY & INSTALL 24"X36"X36" HANDHOLE	EACH	11
11.	SUPPLY & INSTALL UNDERGROUND SPLICE ENCLOSURE	EACH	2
12.	INSTALL 432CT ARMORED FIBER OPTIC CABLE - UNDERGROUND	LF	
13.	INSTALL 288CT ARMORED FIBER OPTIC CABLE - UNDERGROUND	LF	8403
14.	INSTALL 96CT ARMORED FIBER OPTIC CABLE - UNDERGROUND	LF	
15.	LASH 432CT ARMORED FIBER OPTIC CABLE - AERIAL	LF	
16.	LASH 288CT ARMORED FIBER OPTIC CABLE - AERIAL	LF	
17.	LASH 96CT ARMORED FIBER OPTIC CABLE - AERIAL	LF	
18.	SUPPLY & INSTALL 6.6M STRAND	LF	
19.	SUPPLY & INSTALL FIBER SNOWSHOE	EACH	
20.	SUPPLY & INSTALL 2" PVC STAND OFF RISER	EACH	
21.	SUPPLY & INSTALL 4" PVC STAND OFF RISER	EACH	
22.	SUPPLY & INSTALL DOWN GUY AND ANCHOR	EACH	
23.	SUPPLY & INSTALL AERIAL SPLICE ENCLOSURE	EACH	
24.	SUPPLY & INSTALL 1" EMT CONDUIT	LF	
25.	SUPPLY & INSTALL 2" EMT CONDUIT	LF	
26.	SUPPLY & INSTALL 1" PLENUM RATED INNERDUCT	LF	701
27.	SUPPLY & INSTALL WYE CAST CONNECTOR	EACH	
28.	SUPPLY & INSTALL LB	EACH	
29.	PROPOSED WALL CORE	EACH	
30.	INSTALL 24CT INDOOR/OUTDOOR RATED FIBER OPTIC CABLE - UNDERGROUND	LF	1482
31.	INSTALL 24CT INDOOR/OUTDOOR RATED FIBER OPTIC CABLE - AERIAL	LF	
32.	REMOVE & REPLACE SIDEWALK	SQ FT	
33.	REMOVE & REPLACE ASPHALT	SQ FT	
34.	24CT ARMORED INNERDUCT	LF	240
*	35. TRAFFIC PERMIT	AGENCIES	1
*	36. RIGHT OF WAY PERMIT	AGENCIES	1

\* CITY, COUNTY, AND STATE.

**olsson**

7301 West 133rd Street, Suite 200 TEL 913.381.1170  
Overland Park, KS 66213-4750 FAX 913.381.1174 [www.olsson.com](http://www.olsson.com)



Know what's below.  
**Call** before you dig.

[illegible]