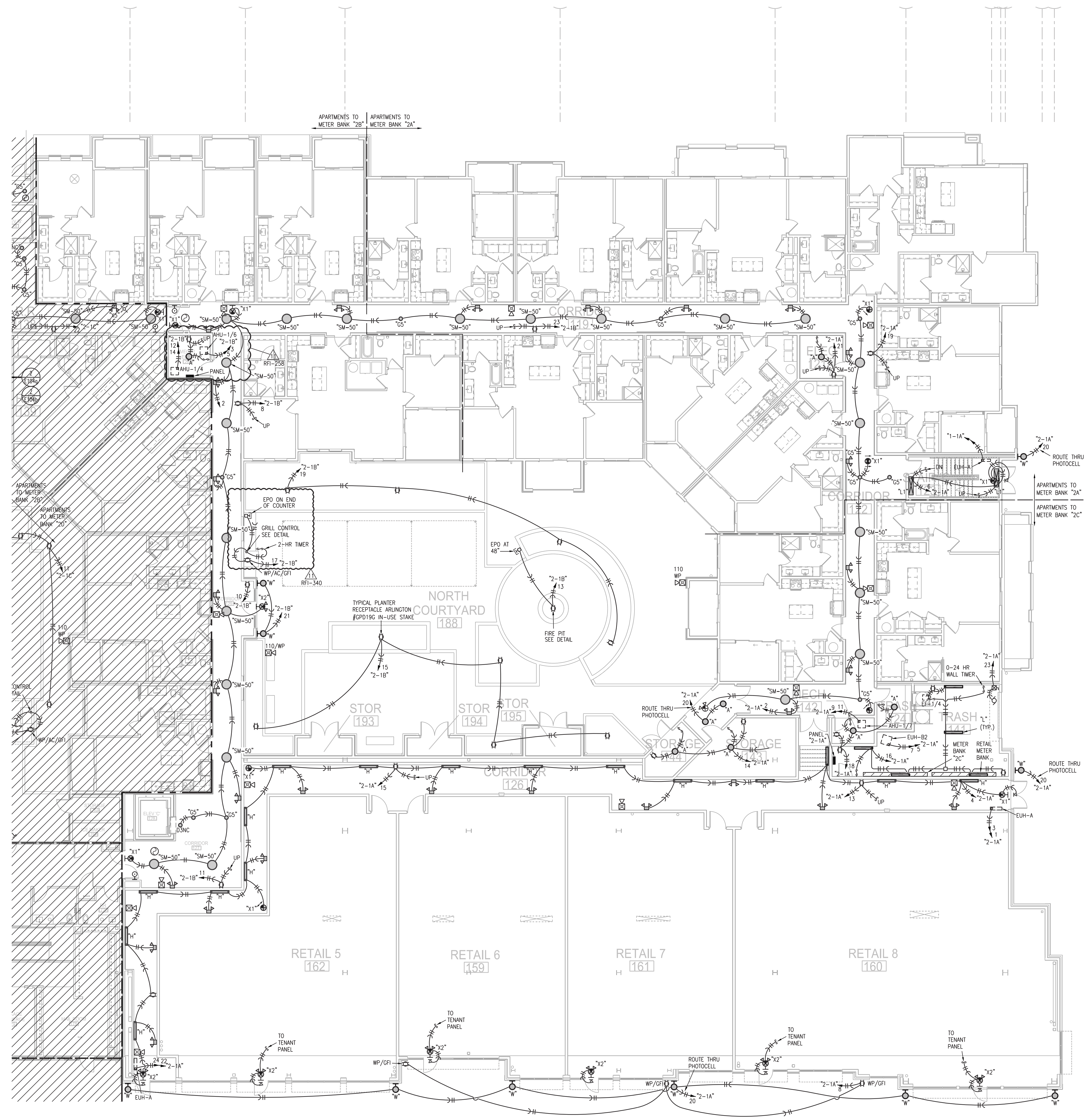


Summit at West Pryor



- NOTES:
1. ALL ARE TYPE "A" UNLESS NOTED OTHERWISE.

2. ALL STAR LIGHTS ARE TYPE "L1" UNLESS NOTED OTHERWISE.

3. ALL ARE TYPE "X1" UNLESS NOTED OTHERWISE.

4. ALL ARE TYPE "X2" UNLESS NOTED OTHERWISE.

5. ALL ARE TYPE "XS" UNLESS NOTED OTHERWISE.

6. CONNECT FIRE/SMOKE DAMPERS SHOWN ON MECHANICAL PLANS TO 120V, AND FIRE ALARM RELAY TO SHUT UPON SMOKE DETECTION IN CORRIDORS.

7. SEE UNIT PLANS FOR FURTHER WORK.

8. LIGHTS AT APT. ENTRY DOORS CONNECT TO APT. HOT CIRCUIT.

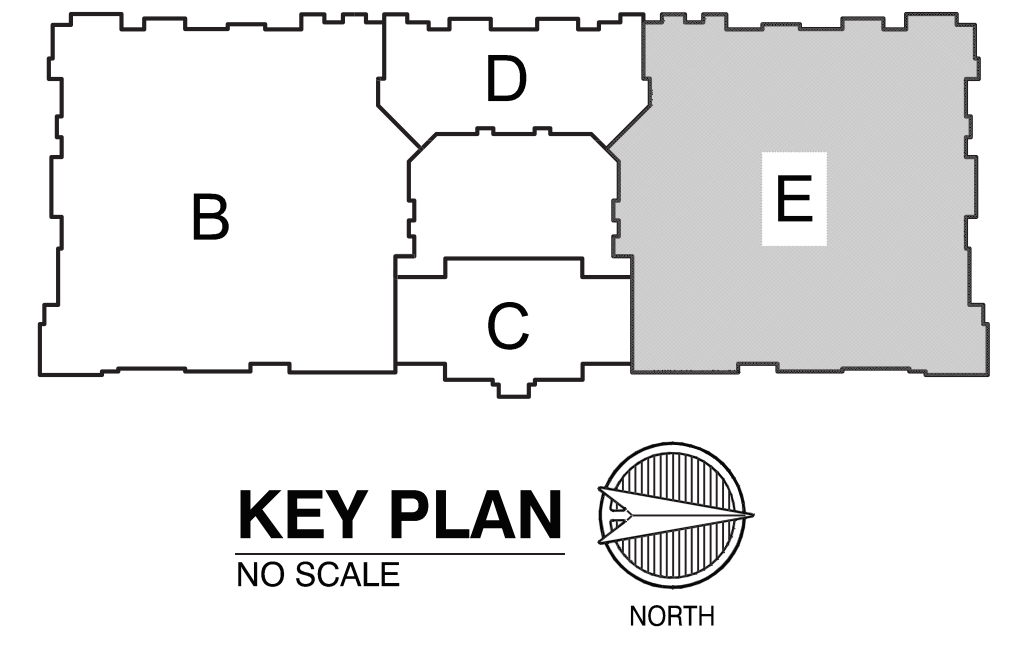
9. ALL AHU'S HAVE AUTO DAMPER/THERMOSTAT SYSTEM TO WIRE. SEE HVAC PLANS.

10. EXIT SIGNS SHALL BE READILY VISIBLE TO OCCUPANTS.

11. EXTERIOR LIGHTING TO BE ROUTED THRU PHOTOCELL.

12. DENOTES DISTRIBUTION PANEL.
- LEGEND:

TO LIGHTING CONTROL PANEL.



1 FIRST FLOOR PLAN - AREA E
3/32"=1'-0" ELECTRICAL

LS&A
Lester Sommers & Associates, P.A.
CONSULTING ENGINEERS
3639 SW Summitfield Drive, Suite A
Topeka, Kansas 66614-3974
Telephone: (785) 233-0232
FAX: (785) 233-0447
Email: lsapi@lsapa.com
LSA PROJECT NO. 1594023

TRi
ARCHITECTS

TRi Architects
9112 Manchester Road
St. Louis, Missouri 63119
© Copyright 2018

T: 314-395-0750
F: 314-395-0751
www.triarchitects.com

DATE: 09.12.19

REVISIONS

PERMIT COMMENTS 09.06.19

REVISION 1 12.20.19

REVISION 3 04.03.20

REVISION 4 04.24.20

REVISION 5 07.02.20

REVISION 6 10-30-20

DWG BY RRB

TRi PROJECT NO. 18-046

SHEET NO. E105

FIRST FLOOR PLAN - AREA E
-ELECTRICAL