

RESIDENTIAL ENGINEERING SERVICES, LLC.  
SHOP DRAWINGS/SUBMITTAL REVIEW

SUBMITTAL WAS REVIEWED FOR DESIGN CONFORMITY  
AND GENERAL CONFORMANCE TO CONTRACT  
DOCUMENTS ONLY. THE CONTRACTOR IS RESPONSIBLE  
FOR CONFIRMING AND CORRELATING DIMENSIONS AT  
JOBSITE FOR TOLERANCE, CLEARANCE, QUANTITIES,  
FABRICATION, COORDINATION OF HIS OR HER WORK  
WITH OTHER TRADES, AND FULL COMPLIANCE WITH  
CONTRACT DOCUMENTS.

STATUS:

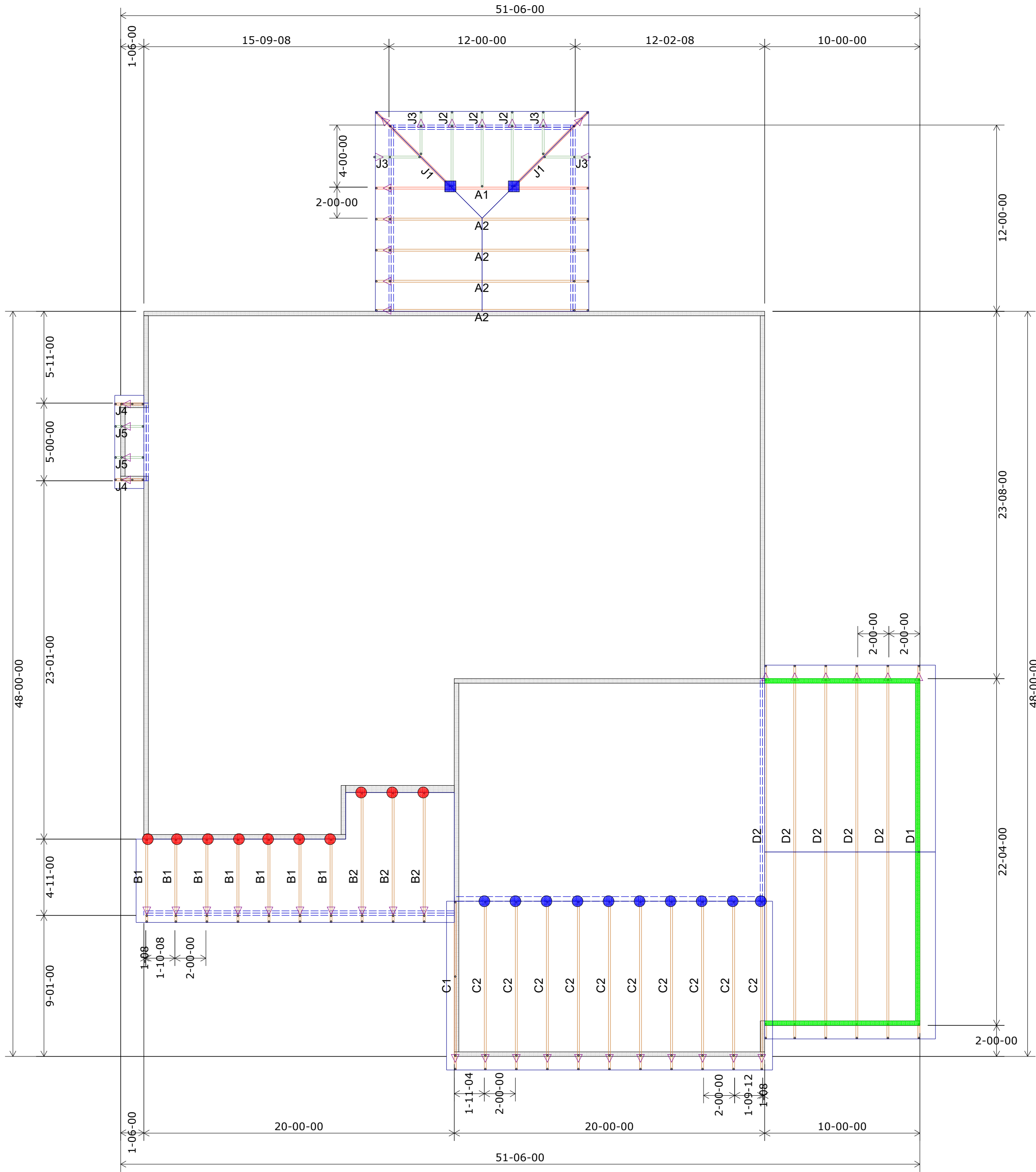
APPROVED

03.04.2021

REVIEWED BY:

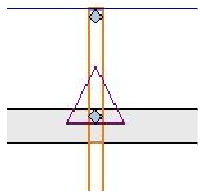
BH

ENGINEER, RESIDENTIAL ENGINEERING SERVICES, LLC



HANGER SCHEDULE	Quantity
LUS24	10
LUS26	14
HUS26	9
HHUS26-2	0
HGUS26-2	1
HGUS28-3	0
LTHJA26	0
TJC37	2
TJC57	0
HTS20	0

Triangle denotes the left end of the Truss as it appears on the Engineered Drawings provided.



Unless otherwise specified by Engineer Of Record, Wheeler Lumber, LLC recommends an uplift connection at each bearing point per the following:

# of Uplift	Connector
0 - 495:	(1) H2.5A
495 - 990:	(2) H2.5A
990 - 1245:	(1) HTS20

Installation per Simpson Strong-Tie guidelines.

For Reactions greater than 1245#, refer to EOR.

Wall Heights 9-01-02 U.N.O.
8-01-02

RELEASE FOR  
CONSTRUCTION  
AS NOTED ON PLANS REVIEW  
DEVELOPMENT SERVICES  
LEE'S SUMMIT, MISSOURI

03/09/2021

Customer	Job Name	Job Site Address	City, State	Designer	2/23/2021
Summit Homes	Lot 102 The Manor at Stoney Creek	4421 SW Tanzanite Circle	Lee's Summit, MO	Chance Lickteig	Job # 210303

THIS IS A TRUSS LAYOUT. THESE TRUSSES ARE DESIGNED AS INDIVIDUAL BUILDING COMPONENTS TO BE INCORPORATED INTO THE BUILDING DESIGN AT THE SPECIFICATION OF THE BUILDING DESIGNER. SEE INDIVIDUAL DESIGN SHEETS FOR EACH TRUSS DESIGN IDENTIFIED ON THE PLACEMENT DRAWING. THE BUILDING DESIGNER IS RESPONSIBLE FOR TEMPORARY AND PERMANENT BRACING OF THE TRUSSES TO BE BUILT. THE BUILDING DESIGNER IS RESPONSIBLE FOR THE GENERAL LAYOUT OF THE TRUSSES, INCLUDING THE LOCATION OF THE TRUSSES, WALLS, AND COLUMNS. THE RESPONSIBILITY OF THE BUILDING DESIGNER FOR GENERAL LAYOUT OF THE TRUSSES, INCLUDING THE LOCATION OF THE TRUSSES, WALLS, AND COLUMNS, IS NOT TRANSFERRED TO THE TRUSS MANUFACTURER. THE TRUSS MANUFACTURER'S RESPONSIBILITY IS LIMITED TO THE FABRICATION OF THE TRUSSES, INCLUDING THE LOCATION OF THE TRUSSES, WALLS, AND COLUMNS, AS SHOWN ON THE TRUSS LAYOUT. THE TRUSS MANUFACTURER'S RESPONSIBILITY IS LIMITED TO THE FABRICATION OF THE TRUSSES, INCLUDING THE LOCATION OF THE TRUSSES, WALLS, AND COLUMNS, AS SHOWN ON THE TRUSS LAYOUT. THE TRUSS MANUFACTURER'S RESPONSIBILITY IS LIMITED TO THE FABRICATION OF THE TRUSSES, INCLUDING THE LOCATION OF THE TRUSSES, WALLS, AND COLUMNS, AS SHOWN ON THE TRUSS LAYOUT.	Shop Drawing Approval	THIS LAYOUT IS THE SOLE SOURCE FOR FABRICATION OF TRUSSES AND VOIDS ALL PREVIOUS ARCHITECTURAL OR OTHER TRUSS LAYOUTS. REVIEW AND APPROVAL OF THIS LAYOUT MUST BE RECEIVED BEFORE ANY TRUSSES WILL BE BUILT. VERIFY ALL CONDITIONS TO INSURE AGAINST CHANGES THAT WILL RESULT IN EXTRA CHARGES TO YOU.
--	-----------------------	--

Wheeler Lumber  
1959 Old Hwy 50 NE  
Waverly, KS 66871



1st Floor Truss Layout  
Scale: 3/16" = 1'

RESIDENTIAL ENGINEERING SERVICES, LLC.  
SHOP DRAWINGS/SUBMITTAL REVIEW

SUBMITTAL WAS REVIEWED FOR DESIGN CONFORMITY  
AND GENERAL CONFORMANCE TO CONTRACT  
DOCUMENTS ONLY. THE CONTRACTOR IS RESPONSIBLE  
FOR CONFIRMING AND CORRELATING DIMENSIONS AT  
JOBSITE FOR TOLERANCE, CLEARANCE, QUANTITIES,  
FABRICATION, COORDINATION OF HIS OR HER WORK  
WITH OTHER TRADES, AND FULL COMPLIANCE WITH  
CONTRACT DOCUMENTS.

STATUS:

APPROVED

03.04.2021

REVIEWED BY:

BH

ENGINEER, RESIDENTIAL ENGINEERING SERVICES, LLC

